

TheMackinac

PUBLICATION OF THE SIERRA CLUB'S MICHIGAN CHAPTER • AUTUMN/WINTER 2014-15

The Power of One

by Gail Philbin, Michigan
Chapter Assistant Director

“When we try to pick out anything by itself, we find it hitched to everything else in the Universe.”

Sierra Club founder John Muir penned that famous line to express the idea that people and everything else on the planet are part of a larger, interrelated, natural whole. Yet, Muir’s visionary statement written in 1911 – long before the term “ecosystem” was coined and sustainability became a science – also applies to the human whole of Sierra Club.

When we try to pick out any one volunteer or staff person by themselves, we find they play a vital role in the grander effort to protect the environment, but they aren’t doing it alone. They’re working within a network of concerned citizens in a mighty grassroots organization built in Michigan nearly five decades through the volunteerism, financial support, expertise and long-term commitment of thousands.

This issue of *The Mackinac* underscores how each and every one of us, working together within Sierra Club and our state, makes a difference. Included is a special election offering information about Club-endorsed candidates in state and local elections vetted through a painstaking, volunteer-led Chapter process to help you cast a vote for the environment. And on p.12 you can vote for Sierra Club members who seek to fill the oft-overlooked but key role of managing



Chapter affairs as part of our volunteer Executive Committee.

Through our coverage of the annual Chapter awards on p.14, we spotlight extraordinary individuals who make outstanding contributions to the environment like volunteer Robert Gordon, who received the Theodore Roosevelt Political Leadership Award for his work as our primary legislative lobbyist at the Capitol. And then there’s Anne Woiwode, who steps down in December on the eve of her 30th anniversary as Chapter director to become conservation director. It’s impossible to convey all she has done for Michigan, but Chapter Chair David Holtz (another person making a real difference) makes a good start on p.3.

As conservation director, Anne will focus on environmental policy and strat-

egy, unfettered by the mundane aspects of running the Chapter. Those tasks will fall to me, the new Michigan Chapter director as of January 2015. I’m just the latest in a long line of folks who Anne has mentored over the years. If I can put to work just a fraction of what she taught me about harnessing the power of the individual for the greater good, then we have reason to hope for a better future in Michigan.

IN THIS ISSUE

VOTE! It’s the most important thing you’ll do this year. This issue of *The Mackinac* has an **election guide insert** with info on national, state and local elections. See p.12 for **Michigan Chapter election** details.



SIERRA
CLUB
FOUNDED 1892

Explore, enjoy and protect the planet.

TheMackinac

AUTUMN /
WINTER 2014-15

In the Spotlight

PAGE 1: The Power of One **PAGE 3:**
An Individual Who Makes a Difference

Group Info

PAGE 4

Get Involved

PAGE 5

Clean Energy Solutions

PAGE 6: 500 Miles to talk to DTE

PAGE 7: Goodbye Tiffany!

Democracy In Action

PAGE 8: Now's Your Chance to Make a
Real Difference: Vote on Nov. 4!

Focus On Michigan

PAGE 9: 2014: A Watershed Year
for Michigan / Lake Erie Needs
Our Help... Again!

Great Forests Wild Places

PAGE 10: Michigan Beyond Natural
Gas Organizer Update / Sierra Club
Challenges Grayling Fish Hatchery

7 Ways To Support Our Work

PAGE 11

Chapter Elections

PAGE 12

Chapter Award Winners

PAGE 14

Supporting Your Chapter

PAGE 15: Michigan Chapter's EVERGREEN
Program / You, too, Can Preserve the Future
/ Thank You, EarthShare Donors! **PAGE 16:**
Sierra Club's Michigan Legacy Council



THE MACKINAC

Sierra Club Michigan Chapter
109 E Grand River Avenue
Lansing MI 48906
Phone: 517-484-2372
Email: michigan.chapter@sierraclub.org
michigan.sierraclub.org

EDITORS

Leslie March
lesliemarch@hotmail.com
Gail Philbin
gail.philbin@sierraclub.org
DESIGN
Davina Pallone
davina@designwrench.com

The Mackinac, Volume 48 Issue 2, (ISSN 0744-5288) is published two times every year by Sierra Club Michigan Chapter, 109 E Grand River Ave, Lansing MI 48906. Annual dues for the Sierra Club are \$39, of which \$1 is for a subscription to *The Mackinac*.

Bylined articles represent the research and opinions of the author and are not necessarily those of the Sierra Club or the Michigan Chapter.

Sign up for our twice monthly, online update at
www.tiny.cc/SCMCUpdate.



PRINTED ON RECYCLED PAPER WITH SOY INKS

MICHIGAN CHAPTER STAFF

109 E Grand River Avenue, Lansing, MI 48906
Phone: 517-484-2372

Website: www.michigan.sierraclub.org

State Director

Anne Woiwode anne.woiwode@sierraclub.org

Assistant State Director

Gail Philbin 616-805-3063, gail.philbin@sierraclub.org

Legislative and Political Director

Mike Berkowitz mike.berkowitz@sierraclub.org

Development Director and Energy Issues Organizer

Jan O'Connell 616-956-6646, jan.oconnell@sierraclub.org

Forest Ecologist

Marvin Roberson 906-360-0288, marvin.roberson@sierraclub.org

Michigan Beyond Natural Gas Program Coordinator

Rita Chapman rita.chapman@sierraclub.org

Administrative Assistant

Cecilia J. Garcia cecilia.garcia@sierraclub.org

NATIONAL SIERRA CLUB STAFF

2727 Second Avenue Suite 112, Detroit, MI 48201

Senior Organizing Representative, Beyond Coal Campaign and Environmental Justice Program

Rhonda Anderson 313-965-0052, rhonda.anderson@sierraclub.org

Beyond Coal Campaign Organizing Representatives

Brad van Guilder, Ph.D. 313-205-6386, brad.vanguilder@sierraclub.org

Andrew Sarpolis 248-924-4857, andrew.sarpolis@sierraclub.org

Great Lakes Program Director

Melissa Damaschke 313-965-0055, melissa.damaschke@sierraclub.org

SIERRA CLUB NATIONAL HEADQUARTERS

85 Second Street, Second Floor, San Francisco, CA 94105
Phone: 415-977-5500

Member Change of Address address.changes@sierraclub.org

MICHIGAN CHAPTER EXECUTIVE COMMITTEE

Steering Committee Members

CHAIR David Holtz david@davidholtz.org

VICE CHAIR Jean Gramlich jean.gramlich@michigan.sierraclub.org

TREASURER Helen LeBlanc helen.leblanc@michigan.sierraclub.org

SECRETARY Nancy Shiffler nshiffler@comcast.net

5TH OFFICER Pat Egan pegan@up.net

At-Large Representatives

Nancy Shiffler nshiffler@comcast.net

Jean Gramlich jean.gramlich@michigan.sierraclub.org

Pat Egan pegan@up.net

Craig Brainard boomerbob1@gmail.com

Richard Morley Barron rmorleybarron@charter.net

Carol Graham cmgt2010@gmail.com

Dave Holtz david@davidholtz.org

Deitra Covington-Porter dlcporter09@gmail.com

Local Group Representatives

CG Mary Andersson mandersson@charter.net

CMG Helen LeBlanc helen.leblanc@michigan.sierraclub.org

CUPG John Rebers jrebers@gmail.com

HVG Ed Steinman lighthawk.pilot@gmail.com

NG Laurie Tata greenem@yahoo.com

SEMG Nancy Davis nancyolk@yahoo.com

SWMG Kim Gabriele kcgabriele@comcast.net

TLG Carol Ward saltpt@lighthouse.net

DH: IN 2015 YOU WILL BE MOVING INTO A NEW POSITION AS CONSERVATION DIRECTOR. WHAT ARE YOUR GOALS LOOKING AHEAD?

AW: We are heading toward a time when we can be more proactive on issues. We've been proactive in some areas in the past where we have tackled issues and really gone after them aggressively. We've seen that on CAFOs (concentrated animal feeding operations) and coal plants.

These were issues we needed to push hard because there was no one but Sierra Club to push these issues. The opportunity is there for us to be more proactive with other top issues. Our work on forest issues has always been extremely important and our work on natural resource issues is extremely important.

We also know that protection of the Great Lakes is a top priority of virtually everyone in Michigan and particularly Sierra Club members.

DH: ASSISTANT DIRECTOR GAIL PHILBIN IS TRANSITIONING INTO THE STATE DIRECTOR POSITION. WHAT ASSETS DOES SHE BRING TO HER NEW JOB?

AW: Gail brings terrific skills. Among them is a tremendous focus on making sure we are accomplishing our goals. One of the reasons Gail was hired is because we had already seen her terrific skills in organizing and building coalitions and her diverse work on fundraising and helping to move these things forward. Those are some of the things she brings to Sierra Club.

An Individual Who Makes a Difference

by David Holtz, Chapter Executive Committee Chair

Beginning in January Anne Woiwode will transition from Sierra Club Michigan Chapter director to a newly created position within the Chapter of conservation director.

Anne began as Michigan director nearly 30 years ago after starting with Sierra Club as a volunteer when she moved to Michigan with her husband, Tom, in 1980. This year Anne was honored by Sierra Club in San Francisco with the Virginia Ferguson Award, recognizing more than three decades of leadership and accomplishments that included the establishment of 90,000 acres of wilderness under the Michigan Wilderness Act in 1987.

Chapter Chair David Holtz talked with Anne about her career and what's on the horizon for Sierra Club in Michigan. The full interview is at www.goo.gl/HeVXCC.

DH: WHAT HAS WORKING FOR SIERRA CLUB ALL THESE YEARS MEANT TO YOU AND HOW DO YOU VIEW MOVING INTO YOUR NEW POSITION AS CONSERVATION DIRECTOR?

AW: Working for Sierra Club and having been a volunteer before that has led, unexpectedly, to my ending up in a career that has been constantly changing

and constantly evolving and has had tremendous purpose.

My heart is in the issues and my skills are more in the policy and strategic arena. For me it's a very comfortable transition. It means I'll be able to focus my work on some of the areas where I can contribute the most to the organization. This change means the chapter will have a greater capacity in certain areas on policy.

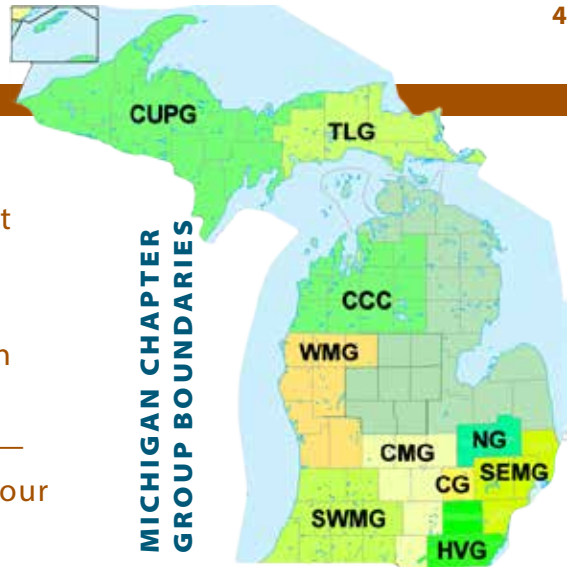
DH: WHAT ARE YOU MOST PROUD OF DURING THE YEARS THAT YOU HAVE LED THE ORGANIZATION IN MICHIGAN?

AW: The Michigan Wilderness Act of 1987 was something that we did, the Sierra Club did, in Michigan. We were absolutely vital in passage of the right to know provisions of the Superfund Act around 1987 by working closely with Members of Congress and encouraging them to take the right vote on that and succeeding in getting that provision passed by one vote in Congress.

One of things I am most excited and proud about is seeing the growth of the organization. We still have a long way to go but we are actively engaged in pretty much every corner of the state and on issues across the spectrum.

Below, at left: A lobby trip on wilderness to Washington, DC in 1986. At right: Anne Woiwode and Michael Brune at 2014 Staff Awards Event.





THINK GLOBALLY, AND GET ACTIVE WITH YOUR LOCAL SIERRA CLUB GROUP! Sierra Club is the largest grassroots environmental organization in the country, and the Michigan Chapter's nine regional Groups and one Committee host outings, political and conservation activities, and informational programs. Members and supporters are invited to attend outings and meetings—everyone is welcome! For inquiries about activities in your area, you can also contact gail.philbin@sierraclub.org.

Clearwater Conservation Committee/CCC

COUNTIES: Antrim, Benzie, Crawford, Grand Traverse, Kalkaska, Leelanau, Manistee, Missaukee, Otsego, Roscommon and Wexford
FACEBOOK: Clearwater Conservation Committee
TWITTER: @NCMIClearwater
CHAIR: Becca Skeels, sierraclubclearwatergroup@gmail.com

Central Michigan Group / CMG

COUNTIES: Ingham, Hillsdale, Jackson, Eaton, Ionia, Clinton and Shiawassee
MEETS: in Lansing area and Jackson
WEBSITE: michigan.sierraclub.org/cmj
FACEBOOK: Sierra Club Central Michigan Group
CHAIR: Dave Errickson, 517-648-9115 or dcenur@yahoo.com
VICE CHAIR: Paul Kindel, 517-332-3091 or kindel@msu.edu

Central Upper Peninsula Group / CUPG

COUNTIES: Alger, Delta, Menominee, Marquette, Dickinson, Baraga, Iron, Keweenaw, Iron, Gogebic and Ontonagon
MEETS: in Marquette
FACEBOOK: Central Upper Peninsula Club
GROUP & OUTINGS CHAIR: John Rebers, 906-228-3617 or jrebers@gmail.com

Crossroads Group / CG

COUNTIES: Livingston County and western Oakland
MEETS: at group leader homes in Livingston County
WEBSITE: michigan.sierraclub.org/crossroads
FACEBOOK: Crossroads Group Sierra Club
CHAIR: Lee Burton, 810-231-9045 or lee.burton@michigan.sierraclub.org

Huron Valley Group / HVG

COUNTIES: Washtenaw, Lenawee and Monroe Counties
MEETS: in Ann Arbor
WEBSITE: michigan.sierraclub.org/huron
FACEBOOK: Sierra Club Huron Valley Group
EMAIL: HVGSierraClub@gmail.com
CHAIR: Nancy Shiffler, 734-971-1157 or nshiffler@comcast.net
VICE CHAIR: James D'Amour, hvg.political@michigan.sierraclub.org

Nepessing Group / NG

COUNTIES: Genesee, Lapeer and northwestern Oakland
MEETS: in Flint
WEBSITE: michigan.sierraclub.org/nepessing
FACEBOOK: Sierra Club Nepessing
CHAIR: Dennis Crispell, 989-624-5038 or thaley01@att.net

Southeast Michigan Group / SEMG

COUNTIES: St. Clair, Macomb, Oakland, and Wayne
MEETS: at Birmingham Unitarian Church
WEBSITE: michigan.sierraclub.org/semg
FACEBOOK: Sierra Club South East Michigan Group
CHAIR: Jean Gramlich, jeangramlich@msn.com

Southwest Michigan Group / SWMG

COUNTIES: Berrien, Cass, St. Joseph, Calhoun, Kalamazoo, Van Buren, Allegan and Barry
MEETS: in Kalamazoo
WEBSITE: www.sierraclubswmg.org
SWG CONTACTS: Kim Gabriele, kcgabriele@comcast.net and Joe Ziolkowski, zzjoes@aol.com

Three Lakes Group / TLG

COUNTIES: Chippewa, Mackinac, Luce and Schoolcraft
MEETS: in Sault Ste. Marie
WEBSITE: <http://tlgsierraclub.org/>
FACEBOOK: Three Lakes Group or Sierra Club
CHAIR: Annemarie Askwith, askwitha@lighthouse.net

West Michigan Group / WMG

COUNTIES: Kent, Ottawa, Muskegon, Oceana, Newaygo, Mason, Lake, and Osceola
MEETS: in Grand Rapids
WEBSITE: michigan.sierraclub.org/westmichigan
FACEBOOK: Sierra Club West MI Group
ACTING CHAIR: Craig Brainard, 269.954.8871, boomerbob1@gmail.com



VISIT ONLINE AT MICHIGAN.SIERRACLUB.ORG/GROUPS

GetInvolved!

5

AT THE CORE OF SIERRA CLUB IS OUR MISSION TO EXPLORE, ENJOY AND PROTECT THE WILD PLACES OF THE EARTH. Here's how we do it and how you can join in the fun!

Explore and Enjoy

- **GO ON A NATURE OUTING OR ATTEND AN EDUCATIONAL PROGRAM!** Find out about activities in your area at michigan.sierraclub.org/calendar.
- **JOIN ONE OF OUR MANY VOLUNTEER GROUPS AND COMMITTEES AROUND THE STATE.** See p. 4 for a listing of locations and contact information or visit michigan.sierraclub.org/groups.

Protect

- **EDUCATE VOTERS ON ECO-ISSUES AND LEGISLATION!** In this election year, our Political and Legislative Committees are working hard to get out the word about enviro-friendly candidates and legislative efforts. For more info, see p. 8.
- **SIGN UP FOR EMAIL UPDATES** to stay informed on the issues affecting our Great Lakes State and actions you can take. Visit action.sierraclub.org/MI-newsletter.
- **SUPPORT THE IMPORTANT WORK WE DO.** See p. 11 for details or visit tiny.cc/MISierraClubSupport to make an online donation.
- **JOIN SIERRA CLUB!** Become a member by filling out the form at right or join at michigan.sierraclub.org/joingive.



Explore, enjoy and protect the planet

All Creatures Great & Small



"Every good thing, great and small, needs defense"
- John Muir

Join Sierra Club and help protect all creatures, great & small

Name _____

Address _____

City _____ State _____ Zip _____

Phone _____

Email _____

Join today and receive a **FREE Sierra Club Weekender Bag!**



Check enclosed. Please make payable to Sierra Club

Please charge my: Visa Mastercard AMEX

Cardholder Name _____

Card Number _____ Exp. Date ____ / ____

Signature _____

Membership Categories	Individual	Joint
Special Offer	<input type="checkbox"/> \$ 15	N/A
Standard	<input type="checkbox"/> \$ 39	<input type="checkbox"/> \$ 49
Supporting	<input type="checkbox"/> \$ 75	<input type="checkbox"/> \$ 100
Contributing	<input type="checkbox"/> \$ 150	<input type="checkbox"/> \$ 175
Life	<input type="checkbox"/> \$ 1000	<input type="checkbox"/> \$ 1250
Senior	<input type="checkbox"/> \$ 25	<input type="checkbox"/> \$ 35
Student	<input type="checkbox"/> \$ 25	<input type="checkbox"/> \$ 35
Limited Income	<input type="checkbox"/> \$ 25	<input type="checkbox"/> \$ 35

Contributions, gifts & dues to Sierra Club are tax deductible; they support our effective, citizen based advocacy & lobbying efforts. Your dues include \$ 7.50 for a subscription to SIERRA magazine & \$ 1.00 for your Chapter newsletter.

Enclose a check and mail to:

Sierra Club, PO Box 421041
Palm Coast, FL 32142-1041

F94Q W 1
2100

or visit our website: www.sierraclub.org

500 Miles to talk to DTE

by Tiffany Hartung, Beyond Coal Campaign Representative

One by one, people across Michigan are making a difference by standing up against coal plant pollution. Recent Sierra Club polling shows more than three in five Detroit Edison (DTE) customers and Michigan voters say they support replacing the state's coal-burning power plants with renewable energy.

Alisha Winters and Ebony Elmore understand the power of showing up. The River Rouge residents traveled 500 miles to DTE Energy's Annual Meeting to tell them to make the switch to clean energy. Ebony, Alisha and the thousands who have shown up are having an impact. This summer DTE announced plans to shut two units at the Trenton Channel coal plant in 2016.

"After many meetings and discussions on air quality and pollution, we are elated to hear of the changes DTE has finally decided to make," said Vicki Dobbins, a River Rouge resident. "This will help protect the health, welfare and safety of our children, pregnant mothers and the citizens of the downriver area."

However, DTE has a lot left to do. "Retiring these units at Trenton Channel is a good first step, but further retirements at River Rouge, Trenton Channel, and St. Clair would be in the best interest of public health and ratepayers," said Sierra Club organizer Brad van Guilder.

ONE SIGNATURE AT A TIME

Ken Orlich is determined to see his hometown utility clean up its act. The Lansing resident is organizing volunteers to petition the Board of Water and Light (LBWL) to move Michigan's largest municipal electric utility off coal to clean energy. LBWL had over 3,000 air quality violations at their coal plants and the highest incidences of asthma hospitalizations are in zip codes next to the Eckert plant near downtown. As of press time, Sierra Club had filed a notice of intent to sue LBWL over their air quality violations but is working to reach

a resolution. Contact Brad van Guilder for more information at brad.vanguilder@sierraclub.org.

MORE SOLAR FOR MICHIGAN!

Michigan's two largest utilities can expand their customer-based solar energy programs without increasing costs for customers. Those findings are from a report by the Michigan Public Service Commission (PSC) staff summarizing

the outcome of a Solar Working Group made up of solar businesses, utilities, and advocacy groups. DTE's SolarCurrents and Consumers Energy's EARP programs expire next year if not renewed. Sierra Club is urging the three-member MPSC to act so Michigan's solar industry keeps growing.

Michigan utilities are on track to meet renewable energy and energy efficiency goals for 2015, but new updated clean energy standards are needed. Join volunteers around the state working for a sound energy future by going to michigan.sierraclub.org/democracy.

All the way to talk to DTE.



PHOTO: PETR KRATOCHVIL

IN MEMORY OF HAROLD STOKES

Harold was a longtime Sierra Club member and activist who worked on countless social and environmental justice issues fighting for clean air and water in southeast Michigan. He campaigned against the proposed Detroit incinerator and became a staunch ally in this fight. Harold was also an official intervenor in the Nuclear Regulatory Commission permitting process for Detroit Edison's third nuclear plant as well as a fixture at a myriad of public meetings, hearings and campaign rallies in his over 40 years of grassroots activism.

Harold Stokes passed away this past July. Besides his work with the Sierra Club, he leaves a legacy of advocacy and leadership roles with Citizens for Alternatives to Chemical Contamination, Peace Action, Michigan Environmental Council, Evergreen Alliance, Gray Panthers, Detroit Audubon and the Ecology Center. His vigorous activism was an inspiration for all of us.



Harold Stokes with fellow Gray Panthers Granny D & Ethel Schwartz.



After several years of delays, many observers think that the last few months of the 2014 Michigan Legislative session may see action to update and expand Michigan's renewable energy and energy efficiency standards. A broad coalition of clean energy supporters, from the Christian Coalition and the Michigan Conservative Energy Forum to health advocacy organizations like MIAirMIHealth and solar and wind providers, have come to the same conclusion: Michigan needs more clean energy and less coal fired power plants. Keep tabs on the upcoming legislative debate by signing up for the Michigan Chapter Updates at tinyurl.com/qxlo9vb.

FAREWELL TIFFANY!

Just as Michigan's utilities were rolling out plans for up to eight new coal-fired power plants, Sierra Club was fortunate to lure Michigan native **Tiffany Hartung** back to the state. Her goals were to help organize our members and supporters to demand Michigan move beyond coal to clean energy. Almost seven years later Tiffany, now serving as the Sierra Club's lead on Michigan's Beyond Coal Campaign, helped turn the tide.

Moving Michigan forward toward a clean energy future and beyond coal-fired power plants is a daunting task, but Tiffany has been particularly effective in her role as an organizer, coalition builder and advocate. Tiffany was working on keeping coal in the ground

in Tennessee before heading back to Michigan for the Sierra Club's position. This was a great background to have for the work needed in Michigan.

Once she arrived in Michigan, Tiffany worked on successful efforts to block all of the proposed new or expanded coal plants in Michigan and moved seamlessly into work to close down dirty coal plants and promote wind, solar and energy efficiency.

Two years ago, Tiffany was tapped to serve as Sierra Club's state lead in Michigan on the coal to clean energy campaign. In that role, she has worked with more than a dozen state, national and local organizations, as well as Sierra Club volunteers and staff across the country to assure our work is coordinated and well targeted. Her knowledge and skill have been instru-



mental in Michigan's progress in the long-term fight to curb greenhouse gases and create a sustainable future for our state.

Tiffany will be missed, as will the occasional sound of her dog Blue in the background of conference calls. Please join us to wish Tiffany and husband, Bill, well, as they head south to escape from the Polar Vortex!

Democracy In Action

Now's Your Chance to Make a Real Difference: Vote on Nov. 4!

by Mike Berkowitz, Chapter Political Director

Voting is the most important thing you can do for the environment in 2014. Over the past four years, the Michigan Legislature passed 25 different bills that directly attack the environment, threaten our water and air quality, endanger our forests and wildlife. Who gets elected (or defeated) will determine how well our legislature safeguards the state's natural resources and environmental health moving forward.

I sat down recently with Political Committee Chair Richard Morley Barron to ask a few questions about Michigan politics and the environment as we near November.

MB: HOW ARE THE 2014 ELECTIONS LOOKING IN GENERAL?

RMB: In Michigan, we have a very regressive government when it comes to environmental issues, but we are fighting to change that. We have a ton of competitive races in Michigan pitting environmentalists against candidates who support corporate polluters. The Political Committee is working as hard as it can to elect strong environmentalists. I predict that we'll have more environmental leaders in state and federal government

after this election is over.

MB: HOW IS THE MICHIGAN CHAPTER POLITICAL PROGRAM DOING THIS YEAR?

RMB: We are stronger than ever! We raised more money to use in the election this year than in any previous year, more than doubling our 2012 fundraising. We tripled the size of our Political Internship program, training more than 40 environmentally-minded students from all over the state and deploying them to help our endorsed candidates win their races. We've also generated more press coverage for our endorsed candidates than in any previous election year. It is clear that we are politically stronger in 2014 than ever before and will continue to progress.

MB: HOW DO YOU FEEL ABOUT THE GROUP OF CANDIDATES SIERRA CLUB ENDORSED?

RMB: We're excited. They are hard working, smart, and reasonable people who care about the environment. Our volunteers will be knocking on doors and calling people on behalf of these candidates because they know it's important. For the candidates who are

in a tight race, if Sierra Club gives them volunteers, they don't forget that. If they win, they know we had something to do with it. (See our Election Guide insert for our endorsements or visit michigan.sierraclub.org/democracy/michiganpolitics.html.)

MB: WHAT ARE THE BIGGEST ENVIRONMENTAL ISSUES CANDIDATES ARE TALKING ABOUT?

RMB: Thoughtful environmental candidates are concerned about the serious challenges of climate change. They understand the urgent need to develop renewable energy sources, which will have the additional benefit of creating new, good-paying jobs here in Michigan. Environmental leaders also grasp the vital importance of protecting our water from corporate polluters and "frackers."

MB: WHERE CAN PEOPLE FIND MORE INFORMATION ABOUT THEIR VOTING DISTRICT?

RMB: Check out our Election Guide insert or visit michigan.sierraclub.org/democracy/michiganpolitics.html.

MB: WHAT CAN WE DO TO MAKE A DIFFERENCE?

RMB: Everyone can do something! The most effective things you can do are donate money to the Michigan Sierra Political Action Committee (see below) and/or volunteer for one of our endorsed candidates. Every dollar donated helps us contact more voters and elect environmental champions. For details or to get involved, email mike.berkowitz@sierraclub.org or call 517-484-2372, ext. 13.

HOW TO DONATE TO THE MICHIGAN SIERRA CLUB'S PAC

- 1) Write a check for the amount of your choosing.
- 2) Make it out to "Michigan Sierra PAC."
- 3) Fill out this form (required by the Secretary of State).
- 4) Mail your check and this form to the following address: Michigan Sierra PAC, 109 E. Grand River Avenue, Lansing, MI 48906



Or donate online at sc.org/MichiganVoteEnvironment!

Corporate checks are not permitted. Contributions to Michigan Sierra PAC are not tax-deductible. Paid for Michigan Sierra PAC, 517-484-2372, ext 13.

Name: _____

Address: _____

City/State/ZIP: _____

Phone: (____) _____

Email: _____

Employer: _____

Occupation: _____

2014: A Watershed Year for Michigan

by Gail Philbin, Assistant State Director

This year is a watershed year for Michigan's food system. It began with the signing of an \$8.9 billion Federal Farm Bill that increased support for organic, locally grown foods. Other events fell into place that impact our food, agriculture and the environment.

The 2014 highlights:

LAKE ERIE AND MICHIGAN FACTORY FARMS

Toledo banned water use for a weekend in August after microcystin, a toxin that can cause vomiting, diarrhea and liver issues, was found at unacceptable levels. The Detroit News ran our Op Ed that linked the Lake Erie algal bloom that caused the toxin to factory farms in the watershed and called out for state agencies to act on this information.

www.tinyurl.com/DetNewsOpEd

BACKYARD FARMER RIGHT

Less=More member Wendy Banka led public opposition to oppose changes

made by the Michigan Commission of Agriculture to the Generally Accepted Agricultural Management Practices in April. They removed Right to Farm Act nuisance lawsuit protection for urban and suburban farmers who raise a few animals for food. This issue, must be watched because it affects your right to grow your own safe, healthy food.

SUBSIDY REFORM

Four Less=More members were appointed to the Michigan Technical Committee that advises the Natural Resource Conservation Service's State Conservationist on what farming practices to support with Farm Bill subsidies. We will work to increase funds for sustainable livestock farmers and end support for polluting factory farms.

VOLUNTEER AG COMMITTEE

Michigan Sierra Club is forming an Agriculture Committee for folks interested in working on food and farming issues. Email gail.philbin@sierraclub.org.



Less=More is a coalition of farmers, consumers and advocacy organizations that seeks to level the playing field for sustainable farmers by changing the way subsidies are distributed in Michigan. Less support for polluting factory farms means a more sustainable Michigan.

www.MoreforMichigan.org

Check out our series of video testimonials by Michigan consumers and farmers at tinyurl.com/lessmorevideos.

Lake Erie Needs Our Help... Again!

by Melissa Damaschke, Great Lakes Program Director

Over five inches of rain fell in the Detroit area within 24 hours on Aug. 11, flooding roads, delaying travel, damaging property, leaving sewage and rainwater in basements and polluting local rivers. The state reported that about 4.5 billion gallons of diluted and partially treated sewage polluted the Detroit and Rouge rivers, equivalent to 6,700 Olympic-sized pools full of sewage.

Unfortunately, it gets worse. The nutrients in the sewage, in addition to manure and runoff from agricultural lands in southeast Michigan and northwest Ohio, feed cyanobacteria (blue-green algae) in Lake Erie producing the toxin microcys-

tin. Unsafe levels were found in the city of Toledo's drinking water supply and a water advisory was issued for a few days resulting in hundreds of thousands of people unable to drink water or bathe.

Furthermore, in the Great Lakes region climate-change induced extreme weather events cause large volumes of rain in a short period of time to overburden sewer systems. The high cost of upgrading and expanding the aging sewage system has forced the Detroit Water and Sewerage Department to raise its water rates numerous times over the last decade. As a result, water has become unaffordable to many residents, thousands of whom had

their water shut off earlier this year because of a failure to pay their bills.

Bottom line – we need solutions to these challenges; solutions that protect the Great Lakes and build climate strong communities. The good news is we have some of the solutions – provided as recommendations by the International Joint Commission in the report, “A Balanced Diet for Lake Erie: Reducing Phosphorus Loading from Harmful Algal Blooms” (available for download on their website, www.ijc.org). Now it's time to get to work to use the recommendations to create policies that protect Lake Erie now and for future generations.

Beyond Natural Gas Update: Kudus to Michigan Volunteers

by Rita Chapman, Michigan Beyond Natural Gas Coordinator

Shirley Kallio has been instrumental in Sierra Club's strong focus on the effects of fracking in hastening climate change. Shirley is strongly motivated, because she's very worried about the world we are leaving for her grandchildren. She is one of several volunteers who tackle the complex of issues around fracking from different angles, including Nancy Shiffler, Craig Brainard, Charlie Weaver and Chapter Chair David Holtz. The Michigan Beyond Natural Gas and Oil Committee made significant progress this year because of their work.

This summer, when the Michigan Department of Environmental Quality took public comments on their proposed new rules for fracking. Committee chair Nancy Shiffler made sure the chapter's comments were strong. Nancy analyzed the complex language, and wrote our excellent response.

In addition, Nancy worked with staff Rita Chapman and consultant Chris Grobbel, Ph.D., on a workshop to teach attendees how to comment on gas and oil drilling permits. We've presented the workshop three times, and plan to continue into 2015. This is leading to new ways to weigh in earlier on additional issues as well. The success of the workshops led to thirteen Sierra Club members testifying at the public hearings!

Our public education work was strengthened when Craig Brainard and Nancy collaborated to update our fracking presentation, which we've given many times. Craig's warm and friendly and a little sarcastic wit has become popular among fracking activists via his e-newsletter, *The Linkletter*®, that he sends by email and that is published online at www.TheMichiganVoice.com.



Shirley Kallio

Thank you to everyone for your efforts! To join our work, please contact rita.chapman@sierraclub.org.

Sierra Club Challenges Grayling Fish Hatchery

by Marvin Roberson, Chapter Forest Ecologist

If you were going to pick the worst place in the state to site an industrial fish farm, it would be hard to beat the Au Sable River system. And within this system, you'd be hard pressed to pick a worse place than just upstream from the "Holy Waters" stretch of the river, an eight-mile stretch beginning just downstream from Grayling.

But that's just what a private firm is proposing to do. Harrietta Hills, a private fish farming company, has applied for a permit to revamp the old Grayling Fish Hatchery into an industrial fish farm, smack dab in the river system. Fish farms are sources of pathogens, parasites, and whole fish, all of which regularly escape these facilities. I'll just say it – the Au Sable River is simply a stupid place to put a fish farm. Really stupid.

Sierra Club will contest the water discharge permit the facility needs to operate. Bizarrely, the permit does not require the facility to monitor for, much less prevent, escape of disease, parasites,

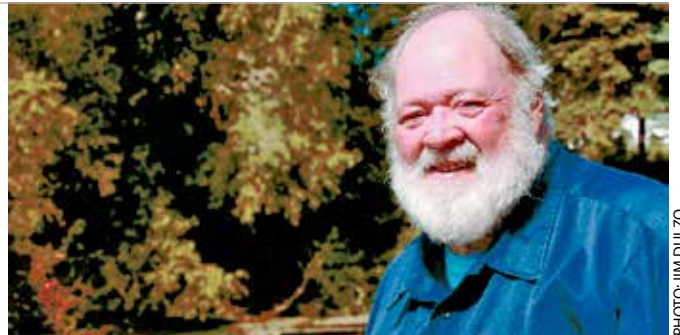


PHOTO: JIM DULZO

Charlie Weaver is a leader of the Michigan Chapter's Clearwater Committee and a professional river guide on the Au Sable. As someone who spends most of every day on the river, Charlie has grave concerns over the proposed fish hatchery expansion.

or even fish. There have been reports already of escaping fish.

Sierra Club has a strong history with the Au Sable. We litigated to keep oil and gas drilling out of the Mason Tract. Charlie Weaver, a leader in our new Clearwater Committee, has been a professional river guide on the Au Sable and strong advocate for it for decades. Lorne Beatty has overseen our participation in the "Cedars for the Au Sable" tree planting efforts for years.

The Michigan Chapter of the Sierra Club is committed to keeping the Au Sable fish-factory free.

7 Ways To Support Our Work

SIERRA CLUB HAS LONG BEEN ONE OF THE MOST VERSATILE DEFENDERS OF THE ENVIRONMENT. This versatility gives you many options for supporting our work, from educational programs to citizen lobbying to electoral engagement. Here's how!



1 BECOME A SIERRA CLUB MEMBER or give a gift membership. Use the form on p. 5 or go to www.michigan.sierraclub.org.

2 MAKE A FINANCIAL CONTRIBUTION to Sierra Club Michigan's effective, citizen-based advocacy efforts. Donations to support our citizen engagement work, including twice-yearly citizen Lobby Days and in-district legislative work are not tax-deductible but vital to our success. Just send a check with the form below or visit michigan.sierraclub.org/joingive for monthly, quarterly or other gift options.

3 SUPPORT US WITH A TAX-DEDUCTIBLE GIFT to The Sierra Club Foundation. This supports our educational and administrative policy work at the state and federal level, including litigation, forest biodiversity,

supporting clean sustainable agriculture, protecting Michigan against the dangers of fracking and moving towards a future of clean energy. Checks payable to The Sierra Club Foundation should be mailed to the Michigan Chapter Office.

4 GIVE AT THE OFFICE! Donate through your workplace via EarthShare of Michigan's Workplace Giving program. For questions or to create a giving program at your workplace contact Jan O'Connell at jan.oconnell@sierraclub.org or 616-956-6646. To learn more visit www.earthsharemichigan.org.

5 PLANNED GIVING. With Sierra Club's Gift Planning Program, you can designate funds to support the Chapter in a variety of ways, from bequests to charitable gift annuities. Call Jan O'Connell, 616-956-6646 to learn more.

6 CONSIDER COMMEMORATIVE AND MEMORIAL GIFTS. Celebrate important events or remember a loved one with a donation that supports protection of Michigan's environment. Contact jan.oconnell@sierraclub.org.

7 DONATE TO THE MICHIGAN SIERRA PAC. Giving to our state-registered political action committee is an excellent way to help our Chapter elect environmentally-minded candidates to state and local public office. To donate, fill in the form on p. 8 or visit tinyurl.com/supportSCMC.

SUPPORT THE WORK OF THE SIERRA CLUB MICHIGAN CHAPTER

Enclosed is my/our gift to the Sierra Club Michigan Chapter:
_____ \$250 _____ \$100 _____ \$50 \$_____ Other

Give online at www.tiny.cc/MISierraClubSupport

Your donation helps provide the flexible funding Sierra Club needs to successfully advocate for Michigan's Great Lakes, wild heritage, and clean energy future.

Your contribution to Sierra Club is not tax-deductible; it supports our effective, citizen-based advocacy and lobbying efforts. If you prefer to make a tax-deductible gift to support our work, call Development Director Jan O'Connell at 616-956-6646 to learn how.

**Please send your gift to Sierra Club Michigan Chapter,
109 E. Grand River Avenue, Lansing, MI 48906**

Instead of a check, please charge my credit card
(VISA or MC) \$_____.

Card # : _____ Exp. Date: _____

Name: _____

Address: _____

Phone: () _____

Email: _____

VOTE FOR MICHIGAN CHAPTER EXECUTIVE COMMITTEE MEMBERS

The six Michigan Chapter Sierra Club members listed on these two pages are running for four at-large spots on the Michigan Chapter Executive Committee. ExCom members set Chapter priorities and policies, ensure financial stability and solvency, and monitor and evaluate Chapter and Club activities. Their willingness to serve illustrates the strong commitment to grassroots activism that makes Sierra Club the most effective environmental group in the country. Please note that due to space constraints, we asked the candidates to limit their statements to 100 words or less. (If a statement runs longer than 100 words, the full statement can be found on the election web page at tinyurl.com/MIExComVote). Two lines on the ballot are provided for write-in candidates as well.

Vote for no more than four candidates. You can cast your vote in one of two ways: Go online to our election web page and ballot at tinyurl.com/MIExComVote or mail in the ballot in this newsletter on p. 13. If you're voting by snail mail, you must write your Sierra Club membership number on the outside of the envelope in which you return your ballot or your vote will be disqualified (your membership number is above your address on the back cover of this newsletter). This information will also be required for online voting. **Paper ballots must be returned to the Michigan Chapter office by Nov. 1, 2014 (online voting deadline is the same).**

Jean Gramlich

I have served as Chapter Chair seven years and on the Strategic Planning, Political, and Legislative Committees, and as SEMG chair. I am particularly interested in preservation of our soil and wildlife as a state certified Master Gardener and Conservation Steward, and I am active in a local land conservancy. I want to use my experience to educate others to value the environment and to protect the earth from those who would exploit and pollute with no thought for the health of our communities or the legacy we leave for future generations.



David Holtz

As your current Michigan Chapter Chair I've worked with other Sierra Club volunteers and staff toward building a stronger state chapter through focused strategies, improved communications, increased volunteer support and by recruiting strong volunteer chapter leaders who reflect Michigan's diversity. If elected I would continue working with other Sierra Club members to grow our citizen-powered advocacy for climate solutions and to protect our Great Lakes, our forests and other lands, our air and to revitalize democracy in Michigan. My Sierra Club involvement dates to 2001. I am Clean Water Action's former Michigan Director and former Executive Director of Progress Michigan.



Vincent M. Martin

I am a community activist who rallies to save what many people take for granted, our environment. I currently serve on the Board of Directors for the following community based organizations: Southwest Detroit Environmental Vision and Congress of Communities. I also serve on environmental advisory panels in and around my community: I have given Southwest Detroit 48217 a voice at the national level during meetings with the EPA and the U.S. State Department. I would like to serve on Executive Committee to assist in the environmental protection efforts of the Sierra Club in the state of Michigan... (for Vincent's complete statement, go to: tinyurl.com/MIExComVote).



Tom Turner

I've always had the profound sense that the environment is all around us and in us; that we fail to protect our environment at our own peril. I've been a Sierra Club member since 1996 and became more involved after graduating college. Currently, I'm the Co-Chair of the SEMG Political Committee and am active on the Chapter's legislative, political and legal committees. I am an attorney in Detroit. I'd like to serve on the ExCom because I'm thrilled to be associated with Sierra Club's proud tradition and would like to add my talents, whatever they may be, to its mission.



Gary A. Vetter

My work background has been in finance and marketing. I am presently on the board of directors of the Au Sable River Properties Association (ARPOA), and member of the Anglers of the Au Sable, Huron Pines, Michigan Trout Unlimited and the Michigan Sierra Club. We have a home in Roscommon on the south branch of the Au Sable. Being on the Executive Committee of the Sierra Club will help me to be more involved in conservation in Michigan. The only way to make change is with active and concerned citizens.



Alisha Winters

I started with the Sierra Club in 2008 as a volunteer representing the community of River Rouge where I live. I was involved with the Beyond Coal campaign for my family and my community while educating myself and the community on the environmental impact on the TRI area. I have marched in DC against the Keystone XL pipeline, against the pet coke being stored near River Rouge, and attended the Good Jobs Green Jobs conference to learn to help my community. I'm a part of the Michigan Environmental Justice Coalition and sit on the board for the Early Childhood Learning River Rouge site... (for Alisha's complete statement, go to: tinyurl.com/MIExComVote).



SIERRA CLUB MICHIGAN CHAPTER 2014 EXECUTIVE COMMITTEE BALLOT

Vote for no more than four (4) candidates. The second column of boxes is for the second member of a joint membership only.

JEAN GRAMLICH	<input type="checkbox"/>	<input type="checkbox"/>
DAVID HOLTZ	<input type="checkbox"/>	<input type="checkbox"/>
VINCENT M. MARTIN	<input type="checkbox"/>	<input type="checkbox"/>
TOM TURNER	<input type="checkbox"/>	<input type="checkbox"/>
GARY A. VETTER	<input type="checkbox"/>	<input type="checkbox"/>
ALISHA WINTERS	<input type="checkbox"/>	<input type="checkbox"/>
_____ WRITE-IN CANDIDATE	<input type="checkbox"/>	<input type="checkbox"/>
_____ WRITE-IN CANDIDATE	<input type="checkbox"/>	<input type="checkbox"/>

Clip out and mail your ballot to:
 Michigan Chapter Sierra Club
 attn: Chapter Elections
 109 East Grand River Avenue
 Lansing, MI 48906

Write your Sierra Club membership number on the outside of your envelope to validate your ballot (membership number is above address on the back cover of newsletter).

Your ballot must be received on or before November 1, 2014.

ONLINE VOTING OPTION FOR CHAPTER EXCOM ELECTIONS

tinyurl.com/MIExComVote

KEEP UP WITH SIERRA CLUB ONLINE



WEBSITE: michigan.sierraclub.org



TWITTER: @michigansierra



FACEBOOK: facebook.com/SierraClubMichigan

Chapter Award Winners

Chapter Award Winners Announced at 2014 Annual Retreat

Sierra Club is pleased to recognize some of Michigan's greatest environmental champions:

Mayor **George Heartwell** of Grand Rapids is the recipient of the *Environmentalist of the Year Award* for his extraordinary leadership that has made Michigan's second largest city one of the most sustainable cities in America.

The **Sault Tribe of Chippewa Indians**, under Chairman Aaron Payment, is awarded the *Virginia Prentice Award* for their leadership in many Michigan Chapter priority issues, particularly protection of natural resources and wildlife.

The **Great Lakes Environmental Law Center**, led by Nick Schroeck, earned the *White Pine Award* for furthering environmental protection in many areas through their legal expertise.

Ahmina Maxey, a wonderful leader currently heading ZeroWaste Detroit, is awarded the *Bunyan Bryant Environmental Justice Award*.

Arn Boezart, director of the Michigan Alternative Energy & Renewable Energy Center (MAREC) in Muskegon, is a passionate and effective advocate for clean energy, and receives the *Burton V. Barnes Award* for academic leadership.

Liz Starke, as a leader of the Michigan Student Sustainability Coalition, engaged over 800 students in environmental work, leading to her recognition with the *Cougar Award* this year.

Douglas DeVoid of the Michigan Voice (www.themichiganvoice.com) is recognized the *Cyberpunk Award* for his online blog, website and social media sites devoted to environmental and social justice issues.

Mark Muhich, a leader of the Central Michigan Group, is bringing environmental information and insights to thousands through his regular column in the Jackson Citizen Patriot, earning him the *Environmental Journalism in Print Award* in 2014.

Several of Sierra Club's finest leaders are being recognized as well:

Jean Gramlich served seven years



L to R - David Holtz, Chapter Chair; Marty MacCleery, Retreat Committee Chair and Award winner; and Cecilia Garcia, Administrative Assistant and Retreat Committee member.

as Michigan Chapter Chair, and her exceptional leadership within the Southeast Michigan Group, the Chapter and national Sierra Club led current Chair David Holtz to award her the 2014 *Chair's Award*.

Nancy Shiffler's tireless leadership at the Huron Valley Group, on the national Beyond Natural Gas campaign, and as both past Chapter chair and current Chapter secretary, are just some of the reasons she is receiving the *Marlene Fluharty Award* this year.

Phil Crookshank has been Outings Chair for the Southeast Michigan Group for many years, engaging countless people in "exploring and enjoying" Michigan, earning him the *Vince Smith Award*.

The *Sylvania Award* recognizes **Rebecca Estelle-Skeels'** leadership of the Clearwater Conservation Committee and work with the Beyond Natural Gas Committee.

The newly established *Theodore Roo-*

sevelt Political Leadership Award is given to **Robert Gordon**, whose work with the Political and Legislative Committees since 2011 dramatically raised Sierra Club's visibility and effectiveness.

Martha MacCleery's effective role as chair of Michigan Chapter's Annual Retreat earns her the *Life of the Party Award*.

Service Awards are awarded by Sierra Club's Regional Groups as follows:

- Central Michigan Group recognizes **Mark Meadows**
- Crossroads Group honors **Mary Novrocki**
- Huron Valley Group awards **Ginny Maturen**
- Southeast Michigan Group recognizes **Jerry Hasspacher** and Henry (Hal) Newnan

A complete details of each award and a list of past winners is found at www.michigan.sierraclub.org.

Supporting Your Chapter

Our EVERGREEN Program

Small donations that make a very big impact is the core of our EVERGREEN program.

If economic challenges have placed a strain on your ability to donate, or you just want to set up a hassle-free way to give regularly, our EVERGREEN Program may be for you. It allows you to spread donations over a year with monthly or quarterly gifts, instead of giving a larger lump sum.

A gift of just \$10 a month adds up to significant annual support to the Michigan Chapter. The program is flexible – givers can increase, decrease, postpone or

stop donations at any time. It's convenient too, you can avoid the hassle of sending a check. This is an easy way to ensure our programs remain supported and EVERGREEN even in challenging economic times. Make a bigger difference for a cause you care about, supporting Michigan's environment. Be that one person who cares.

To make an EVERGREEN gift today, go to michigan.sierraclub.org and click on the green donate button, or mail your check or credit card information to Sierra Club Michigan Chapter, 109 E. Grand River Ave., Lansing, MI 48906. You can also use the donation form on page p.11.

You, Too, Can Preserve the Future

“The lasting pleasures of contact with the natural world are not reserved for scientists but are available to anyone who will place himself under the influence of earth, sea, and sky, and their amazing life.” – *Rachel Carson*

When Rachel Carson died in 1964 from breast cancer — at only 56 years of age — she left a large bequest to Sierra Club that included royalties from her renowned book *Silent Spring*. It was her legacy that led Sierra Club to create the Rachel Carson Society, recognizing and honoring those who make a commitment to the environment by including Sierra Club or the Sierra Club Foundation in their estate plans.

If you've placed the Michigan Sierra Club in your will or would like information

about how to do this, please let us know. Commemorative and memorial gifts also help you celebrate important events and occasions or remember a loved one by supporting protection of Michigan's environment. To discuss any of these legacy gifts, contact Michigan Chapter Development Director Jan O'Connell at 616-956-6646 or jan.oconnell@sierraclub.org.



THANK YOU, EARTH SHARE DONORS!

We want to thank all the individuals and businesses who support our work each year through payroll deduction via Earth Share of Michigan.

If you have just completed your annual payroll deduction campaign at work, and EarthShare of Michigan was not listed as an option, please call 616-956-6646 to discuss how you and your fellow employees can support The Sierra Club Foundation – Michigan Chapter and other earth-friendly organizations at work. For more information visit www.earthsharemichigan.org.

Explore, enjoy and protect the planet

Preserve the Future

Not everyone can make a large gift to protect the environment during their lifetime, but you can preserve the environment for generations to come by remembering Sierra Club in your will. There are many gift options available. We can even help you plan a gift for your local Chapter.

For more information and confidential assistance, contact:

Sierra Club

Gift Planning Program

85 Second St, Second Floor

San Francisco, CA 94105

gift.planning@sierraclub.org • (800) 932-4270



POSTMASTER: SEND ADDRESS CHANGES TO SIERRA CLUB, 109 EAST GRAND RIVER AVE, LANSING, MI 48906.



The Sierra Club's members and supporters are 2.1 million of your friends and neighbors. Inspired by nature, we work together

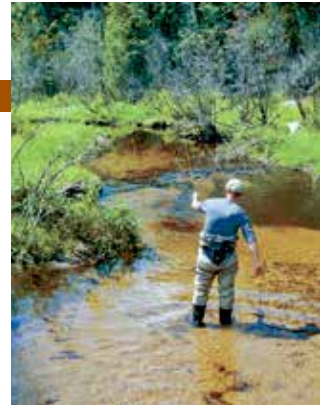
to protect our communities and the planet. The Club is America's oldest, largest and most influential grassroots environmental organization.

STANDARD
NON-PROFIT
U.S. POSTAGE PAID
Lansing, MI
PERMIT NO. 154

Supporting Your Chapter

Sierra Club's Michigan Legacy Council

Sierra Club established its Michigan Legacy Council to honor individuals, groups and organizations making significant gifts to the Michigan Chapter. Their partnership and commitment to our work leaves a lasting legacy. Please join us in thanking the current Michigan Legacy Council members:



FENS & SAPLINGS

\$500-\$999

- Jonathan Cohn
- Estate of Esther M. Dean
- David Diephuis
- Ms. Kristin Dunn
- John H. Edlund
- James & Rhonda Fackert
- Lydia Fischer
- Lannie Fisher
- John Ford
- Barb Griffin & Clay Stauffer
- Thomas (Mike) Haley
- Chris & Tamela Hamilton
- Lynn Hartung
- Nan & Peter Holmes
- Mary Z. Johnson
- Edward Keane
- Albert & Barbara Koegel
- Nancy Lambert
- Lawrence & Mary Lockhart
- Max McKee
- Thomas McQuade
- Matt Moog
- Carla W. Morse
- Thomas & Jill Newhouse
- Nancy Newman
- Rolland O'Hare
- Gilbert Omenn
- Robert F. Rudd
- Jon & Christine Saari

- Loretta Sheehan
- Marilyn Smith
- Kathy Sneden
- Barbara Stowell
- Kay Stremler & Ron Sell
- Donna & Stuart Snyder
- Julie Ann & Steven Wang
- Linda Woodworth
- Anonymous Donors (2)

STREAMS & WHITE PINES

\$1,000-\$2,499

- Richard Barron
- James D. & Cynthia L. Berkey
- Kenneth & Judy Betz
- Margaret Flynn

- Denise Harris
- Douglas Jester & Colleen Barry
- Samuel & Patricia Lacina
- Murray & Jeanie Kilgour
- Paul Maracle
- Rita Mitchell & Ed Steinman
- Sarah Winans Newman
- Henry (Hal) Newnan III
- Jan O'Connell
- Margaret M. Phillips
- Stanley & Connie Rajnak
- Carol E. Ward
- Todd S. Wilkinson
- Anonymous Donor

RIVERS & GROVES

\$2,500-\$4,999

- Lorne & Kathi Beatty
- Helen & Al LeBlanc
- Gwen & John Nystuen
- John & Janice Rebers

DUNES & SHORELINES

\$5,000-\$7,499

- Jill Baker
- Carol Graham
- Nancy Shiffler

MARSHES & PRAIRIES

\$7,500-\$14,999

- Ceci Bauer & Tim Flynn
- Jean Gramlich
- Mr. John R. Hunting
- Pierce Family Foundation
- Anne & Tom Woiwode

GREAT LAKES & GREAT FORESTS

\$15,000+

- Thomas Buhr
- Patrick Egan
- Irwin Andrew Porter Foundation
- Wege Foundation



Generous Gifts from Michigan Chapter Groups

\$1,000-\$2,499
» Crossroads Group

\$2,500-\$4,999
» Southeast Michigan Group
» Nepessing Group
» Three Lakes Group

\$7,500-\$14,999
» Huron Valley Group

Explore, enjoy and protect the planet.