

Crossroads Sierra Club



Fall 2014

New ET Rover Pipeline Possibly Through Our Area – Your Help Needed!

Early this summer many landowners in Michigan were hit by the bad news that yet another pipeline is proposed to run through our state, possibly following the same route that Enbridge had recently dug to ‘replace’ their oil pipeline 6B. The new proposal is for Energy Transfer to build the Rover gas pipeline carrying fracked gas from Pennsylvania and West Virginia, through Michigan, into Ontario, where it could be used by Canadians or exported anywhere in the world. Since there must be public necessity in order to use eminent domain powers, Energy Transfer claims that this gas is also needed in Michigan. Yet only last year the same company removed another gas line (called the Trunkline) from Michigan’s supply, saying it was not needed, and reversed the line to carry crude oil to the south!

This is a terrible burden on the affected landowners, some of whom have several pipelines crossing their land, restricting their land use, disrupting their property with long and frequent construction, cutting trees, causing safety concerns and potentially decreasing property value and increasing insurance cost. Certainly better routes could be found which are more rural and follow roadways rather than cutting through private land. However, the larger vision affects non-landowners too. By exporting fracked gas worldwide our price will rise significantly. US manufacturers will lose their current advantage of low gas prices. The producers will find it profitable to drill and operate more wells which are not sufficiently productive in the current market. The environment and surrounding communities will be sacrificed for corporate profits.

New pipelines must be approved by an agency called Federal Energy Regulatory Commission (FERC). This project will probably be officially submitted early in the new year, so we need to show now that there is a great deal of concern while it is still considered ‘pre-filing’. This is where you come in! You can register on their website, submit comments (more than once if you feel like it), and see the comments from others on the same project. Here is what you do:

- Go to www.ferc.gov .
- Click the Documents and Filings tab.
- First time, go to eRegister to create an account. Chose the more detailed information option, which involves a couple more screens but allows you to do more things. The screens ask for some information which doesn’t seem relevant for individuals, but just write ‘private citizen’ or ‘same’ in the extra fields.
- When everything is accepted the system sends you an email. You have to click on a link in the email to confirm your account.
- The docket # is PF14-14. You can enter your comments. Feel free to use the information from this article.
- To look at comments that have already been posted, from the home page, click on Documents and Filings tab. Scroll down to eLibrary and click on General Search. Under Document number type PF14-14. Click on submit.

When I created my account, I found the system was very slow. I had to click RETRY several times throughout the process. Maybe they never had people showing an interest in these pipelines before? Let’s make that change! Their HELP hotline at (866) 208-3676 is reported to be good.

If you don’t want to use the computer system, you can mail your comments. Send an original and 2 copies. Make sure all copies contain Docket # PF14-14-000 and label one copy to the attention of the Gas Branch 3, PJ-11.3.

Send to: Kimberly D. Bose, Secretary
Federal Energy Regulatory Commission
888 First St. NE Room 1A
Washington, DC 20426

If you want to become more active in this issue please email cg@michigan.sierraclub.org and we’ll be right in touch! Thanks for your help!

Executive Committee, Committee Chairs

Chairperson: Lee Burton Lee.Burton@michigan.sierraclub.org

Vice Chairperson: Sue Kelly
cg.vicechair@michigan.sierraclub.org

Treasurer: Julie Griess jgriess@chartermi.net

Secretary: Laurie Mercure,
cg.secretary@michigan.sierraclub.org

Conservation: Sue Kelly (acting)
cg.conservation@michigan.sierraclub.org

Chapter Group Rep.: Mary Andersson,
cg.grouprep@michigan.sierraclub.org

Fundraising: Paul Thielking, Paul.
Thielking@michigan.sierraclub.org

Media: Lorne Beatty, Lorne.Beatty@michigan.sierraclub.org

Membership: Pam Medelis
cg.membership@michigansierraclub.org

Newsletter: Terry Gannon
cg.pubs@michigan.sierraclub.org

Outings: John Wilson, Mary Andersson,
cg.outings@michigan.sierraclub.org

Political: Julie Greiss, cg.politic
michigansierraclub.org

Programs: Andrea McKenzie,
Mary Novrocki cg.programs@michigan.sierraclub.org

Webmaster: Laurie Mercure,
cg.webmaster@michigan.sierraclub.org

Visit us on the Web at
*Michigan.SierraClub.org/
Crossroads*

Your Crossroads Political Committee is in full gear as elections approach!

The committee has been busy reviewing vote charts and questionnaires for potential endorsements since late spring. State-wide we have endorsed **Gary Peters** for US Senate and **Mark Schauer** for governor. They both have been long-term environmental champions, with extensive records on the state level and also in Washington DC. We also endorsed **Mark Totten** for Attorney General. His responses showed him to be well-informed and supportive on environmental issues. Within our group's area we are excited to have endorsed **Shari Pollesch** for State Senate District 22 (all of Livingston, and Western Washtenaw). We reviewed her credentials and questionnaire, and also had a lengthy in-person interview with several members participating. Shari has not only stated her positions and experience on environmental issues, but also testified at the DEQ hearing on fracking and attended numerous local meetings on hot issues. Following the primary election we expect to be proposing additional endorsements, particularly for congressional races. You can see all endorsements to-date statewide by going to **Michigan.sierraclub.org** and clicking the Michigan Politics link on the left. The vote charts can be viewed by clicking the Democracy in Action link also on the left.

Now that we have endorsed candidates we need to work for them! If you want to join others in working for a campaign, or would like to participate in future political committee work, email me at cg.political@michigan.sierraclub.org, and we'll hook you up! Also feel free to contact me with any political questions.

Our September 17th program at the Brighton Library is **Politics of the Environment**. We have Mike Berkowitz and Richard Barron coming from the Michigan Chapter of the Sierra Club to give us the latest forecasts and critical issues for this election. They did the same thing two years ago and it was a great presentation. Remember that we don't want to only preach to the converted! Bring your friends and neighbors to learn why November's election is important and why we need real information, not just TV sound-bites funded by outside interests, to make our voting decisions.

Finally, I want to forewarn everyone that we will be calling our members before the election. I know everyone hates to get all those political calls, but this will be from your friendly local Sierra Club group, and we have done a ton of research just so that we can answer our members' questions! Believe it or not, in the past we have found members who were uncertain about candidates and proposals. We will have all the details about each endorsement. So give us a welcoming greeting when we call!

- Julie Griess, Crossroads Political Chair

Join Us for a Day of Games, Free Picnic Lunch

Join us for a fun-filled day of games, free picnic lunch, & conversations with friendly Sierra Club folks!

Have you been receiving this newsletter for years and never attended a Sierra Club event? Now is your chance to change that! Attend our Sierra Club Crossroads Group Open House and Family Picnic on **Sunday, October 5th, 12PM at Island Lake Recreation Area**. We will have games and activities for kids and adults, including volleyball, a scavenger hunt, a disc golf challenge, and more. Hotdogs, pop, and tableware provided. Bring a dish to pass if desired. See more details under the Events listings in this newsletter or on our website.

Corn & Monarchs

What possible connection could corn and the monarch butterfly have? I learned of the connection this past May when the Crossroads Group hosted a presentation at the Brighton District Library on monarch butterflies by Diane Pruden of Monarch Watch. The program was very well attended - by Crossroads members, members of the general community, and MANY children. The high attendance was a testament to the popularity of the monarch butterfly as one of the most beautiful and familiar insects in North America. Unfortunately, the eastern monarch butterfly population is in a huge state of decline. This past winter, eastern monarch butterflies were found in only 1.7 acres of its Mexican sanctuaries - compared to 45 acres in 1996. Believe it or not, our grandchildren may have to travel to Texas or Mexico to see a live monarch butterfly.

Why is this happening? The answer comes from research conducted by the University of Minnesota and Iowa State University and points to the increased use of crops in the Upper Midwest engineered to withstand herbicides, the increased use of herbicides to kill competing plants, and the loss of grasslands to large corn and soybean farms.¹

Monarch butterflies lay their eggs on only one kind of plant - the milkweed. Plants from the milkweed family are the only plants that the monarch larvae will eat. The monarch butterfly's migration is amazingly synchronized to the seasonal growth of milkweed. You would think that feeding on a weed would guarantee the survival of any insect. However, milkweed is called a weed because it often grows where farmers don't want it to grow - in and along the edges of cornfields. Since the beginning of this century, a million or more acres of grassland have been turned into corn and soybean fields. Moreover, between 80% and 90% of the corn and soybean plants grown are genetically engineered to withstand herbicides. This allows the farmers to broadly apply herbicides to kill plants such as the milkweed without worry of killing the corn and soybean plants. Consequently, the milkweed's habitat has been significantly reduced and the presence of surviving milkweed in corn and soybean fields has been almost eliminated by herbicides. All this coincides with the rapid decline of the monarch butterfly.

But this is about more than just the decline of the monarch butterfly. "It's also about the unintended consequences of subjecting millions of acres of our best farmland to a single chemical-dependent technology, one literally designed to wipe out plant biodiversity in farm fields."² What can we do to help? The answer is simple. Get your produce from local farmers who grow a variety of crops and use healthy and sustainable gardening practices – without the use of GMO crops. Buy your produce from markets that sell non-GMO produce. Ask before you buy! Besides supporting the local economy, you will be eating healthier and your environmental footprint will be that much smaller.

Mary Novrocki

-
- 1 *Researchers: GM Crops are Killing Monarch Butterflies, After All*, Mother Jones, , <http://www.motherjones.com/tom-philpott/2012/03/researchers-gm-crops-are-killing-monarch-butterflies-after-all>, Wed Mar. 21, 2012 1:00 PM EDT
 - 2 *Researchers: GM Crops are Killing Monarch Butterflies, After All*, Mother Jones, , <http://www.motherjones.com/tom-philpott/2012/03/researchers-gm-crops-are-killing-monarch-butterflies-after-all>, Wed Mar. 21, 2012 1:00 PM EDT

Newsletter E-Delivery: Help us reduce costs and save some trees!

If you would like to sign up for electronic delivery of our quarterly newsletters, please contact our webmaster at cg.webmaster@michigan.sierraclub.org. If you sign up for e-delivery, you will be notified via email when a new newsletter is available to view on our website and we will stop sending you the paper copies of the newsletters unless you specifically request to receive both. See our website Michigan.SierraClub.org/Crossroads (click "Newsletters" tab) for more information.

Crossroads Fall Outings, Part One

General Outing Notice

All Sierra Club outings start at the trail head, and some include fees to cover expenses. Sierra Club outing participants are required to sign the standard liability waiver found on our website. **Outings are subject to conditions. Always check the Crossroads group website for latest information, or check with trip leader for cancellations or changes.**

Volunteer opportunity, North Country Trail

Chief Baw Bees Chapter, North Country Trail Association
Hillsdale County
Second Saturday of every month, 9:30 AM

Join other Sierra Club members (and non members) doing rewarding trail work on the North Country Trail, in and around the Lost Nation State Game area in Hillsdale County. Contact Kevin Bell at kfb@provide.net or call for information at 734-913-4764

Highland Recreation Area, Oakland County, Volunteer Work Day

Highland State Recreation Area
Saturday Sept. 13, 10 AM
Skill level: Novice to expert, Difficulty: Easy to Moderate

Join the Crossroads Group of the Sierra Club for a volunteer work day with the Friends of Highland Recreation Area. This is a great opportunity to see the work and restorations the Friends Group has accomplished! This was the former country retreat of Edsel and Eleanor Ford in the 1920/30s. The artificial Haven Hill Lake and grounds surrounding the nature center were designed by noted Landscape Architect, Jens Jensen. The park entrance is 1 mile east of Duck Lake Rd on M59. We will meet at the Gate House right inside the park entrance for an interesting orientation to the area. The outing is free but requires an annual or daily Michigan State Parks pass (or passport pass) for entry. Open to members and nonmembers, families, and beginners. See the Crossroads Group website or Facebook page for outing confirmation and details. John Wilson at 734-355-3822 or john.wilson@michigan.sierraclub.org

Tree and Wildflower Hike Kensington Metropark

Kensington Metropark Nature Center
Saturday, September 27, 1 PM
Skill Level: easy, no experience necessary

Join the Crossroads Group of the Sierra Club for a leisurely hike at Kensington Metropark. Park Entrance is Exit 151 on I-96. Meet at the Nature Center Saturday, Sept. 27, at 1 PM for a leisurely hike on the nearby trails. Identify trees and wildflowers with knowledgeable outing leaders. Slower pace hike, as the emphasis will be on trees and wildflowers. Outing is free of charge, but requires a Metropark vehicle entry permit. Open to members and nonmembers, families, and beginners. See the Crossroads Group website or Facebook page for outing confirmation and details. John Wilson at 734-355-3822 or john.wilson@michigan.sierraclub.org

Sierra Club Crossroads Group Open House and Family Picnic

Island Lake Recreation Area, Dodge Picnic Shelter
Sunday, October 5, 12PM to 4PM
Open house, all are welcome, member or nonmember, **FREE Picnic lunch**

Join the Crossroads Group of the Sierra Club for a picnic lunch at Island Lake Recreation Area. Games and activities for kids and adults. Volleyball. Opportunity to meet Chapter and Crossroads Group leaders. Mingle with local political candidates, and with like-minded people who are knowledgeable about current environmental challenges. Invited guests will include Friends of Highland Recreation area, Friends of Island Lake Recreation, and Livingston County Land Conservancy.

Crossroads Fall Outings, Part Two

Get information on solar energy for the home. Hotdogs, pop, and tableware provided. Bring a dish to pass if desired. Event is free of charge, but requires a State park passport or day pass sticker for vehicle entry. Location is at the Dodge Picnic shelter. Island Lake Recreation is at exit 151 on I-96. Open to members and nonmembers. See the Crossroads Group website or Facebook page for further details. John Wilson at 734-355-3822 or john.wilson@michigan.sierraclub.org

Fall Color “Paddle to Hell For Lunch”

Halfmoon Lake, Pinckney Recreation Area
Canoes, kayaks, and SUPs (standup paddle boards)
Saturday, Oct. 11, 10:30 AM
Skill level: beginner, Difficulty: Easy to Moderate
Hazards: Deep water, possible motorized boat traffic.

Join the Crossroads Group on a fall paddle with a relaxing alternative to the usual river trip.

The summer crowds and motorized boat traffic will have dissipated. A reasonable Paddle through Halfmoon lake, Portage Creek, and Hiland Lake to the Dam Site Inn in Hell for lunch. Then paddle back. Meet at the Pinckney Recreation Area Halfmoon Lake boat launch and day-use area. North Territorial Road to Hankerd Road (about 2 miles north). This outing is free, but requires a State park passport or day pass sticker for Halfmoon Lake. Lunch not provided. Members, nonmembers, families, beginners and experienced welcome. See the Crossroads Group website or Facebook page for outing confirmation and details. John Wilson at 734-355-3822 or john.wilson@michigan.sierraclub.org

Kayaking for Cranes at Deerfield Hills

Deerfield Hills Nature Area
Sunday, Nov. 2, 4 PM
Skill level: beginner, Difficulty: Easy

A kayak/canoe outing from the Deerfield Hills Nature Area boat launch to view close-up migration of Sandhill cranes. Join the Crossroads Group for an evening of viewing these birds as they gather to their migration staging area on an island in Bennett lake, in preparation for their 1,000 mile southward journey. Bring binoculars and a picnic if you like. This outing is free and fun for all ages, members, nonmembers, families, and beginners. Meet at the Deerfield Hills Nature Area boat launch at 4PM. The Greater Sandhill Crane, often recognized as the oldest living bird species, has a wingspan eclipsing six feet. Deerfield Hills Township Park is located in northeast Livingston County on the south end of Bennett Lake, at the east end of Cohoctah Road and the north end of Green Road. See the Crossroads Group website or Facebook page for outing confirmation and details. John Wilson at 734-355-3822 or john.wilson@michigan.sierraclub.org

Annual Winter Ducks Outing at Kensington Metro Park

Kensington Metro Park Nature Center
Sunday Nov 23, 1PM.
Skill level: beginner, Difficulty: Easy

Join the Crossroads Group to witness one of nature’s amazing shows--the migration of ducks, geese and other wildfowl heading south for the winter-- at this 4,481 acre park featuring wooded, hilly terrain surrounding beautiful Kent Lake. This popular outing is free (but requires a Metro Park pass for entrance) and fun for all ages, members, nonmembers, families, beginners and experienced birders. Bring binoculars or viewing scope, and meet at the Kensington Metro Park Nature Center parking lot. The outing will be led by experienced Audubon leader, Dan Minock. See the Crossroads Group website or Facebook page for outing confirmation and details. John Wilson at 734-355-3822 or john.wilson@michigan.sierraclub.org

Crossroads Fall Outings, Part Three

First Day of Winter Hike, Winter plants and trees

Highland State Recreation Area

Sunday, Dec 21, 1PM

Skill Level: beginner Difficulty: easy

Join the Crossroads Group of the Sierra Club for an afternoon hike at Highland Recreation Area, Sunday, Dec.21, 1PM. We will hike around the Haven Hill Natural Area, which has all of southern Michigan's principal forest types within one small area, including swamp forest of tamarack, cedar, beech-maple forest, oak-hickory forest, and mixed hardwood forest. The area has remained largely undisturbed for the past 75 years and has retained its natural character as well as some unusual flora and fauna. It is an excellent educational facility which is used by universities and international organizations. The park entrance is 1 mile east of Duck Lake Rd on M59. We will meet at the Gate House right inside the park entrance at 1 PM. The outing is free but requires an annual or daily Michigan State Parks pass (or passport pass) for entry. Open to members and nonmembers, families, and beginners. Hiking boots and appropriate warm clothing are recommended, trails may be muddy. A great hike near our own back yard! See the Crossroads Group website or Facebook page for outing confirmation and details. John Wilson at 734-355-3822 or john.wilson@michigan.sierraclub.org

Huron Meadows Metropark Ski Outing

Meet at the Ski Center in Huron Meadows Metropark

Sunday, December 28, 1PM

Skill level: novices to advanced, Difficulty: Easy to Moderate

Join the Crossroads Group of the Sierra Club for an afternoon cross country ski outing at Huron Meadows Metropark. Meet at the Ski Center in Huron Meadows Metropark at 1PM. Enjoy miles of groomed trails both on the golf course and through the woods. Groomed skate ski trails also. Heated warming shelter and indoor bathrooms available. Members, nonmembers, novices and expert Nordic skiers are welcome to enjoy this outing. Outing is free except a Metropark annual sticker or daily pass required for entry. Celebrate the New Year early! Outing dependent on snow. See the Crossroads Group website or Facebook page for outing confirmation and details. John Wilson at 734-355-3822 or john.wilson@michigan.sierraclub.org

Winter Paddle Outing

Huron River below the Kent Lake Dam

Skill Level: Intermediate, Difficulty: Moderate

Sunday, February 15th, Noon

Join the Crossroads Group of the Sierra Club on Sunday, February 15th for their Annual Winter Paddle on the Huron River. This popular outing starts at noon below the Kent Lake Dam in the Island Lake State Recreation Area and takes out at the Placeway Bridge Site picnic area where a warm fire and warm refreshments will be served. This outing is free except for the State Park entry fee. Members and nonmembers are welcome. This is a cold weather paddle and P.F.D.'s are required for all paddlers. Dress appropriately (no cotton allowed), clothing and outerwear must be adequate and will be subject to inspection. Bring a full change of clothes in a dry bag (required). No children or pets are allowed on this outing. Come for the refreshments, or be a shuttle bunny if you are not paddling. See the Crossroads Group website or Facebook page for outing confirmation and details. John Wilson at 734-355-3822 or john.wilson@michigan.sierraclub.org

Future Winter Outings:

Annual Owl Walk Outing

Overnight Cross Country Ski Outing at Ellis Lake

Winter Camping! Try it, you will like it!

Crossroads and the Sierra Club Present

Politics of the Environment,

A program by Richard Barron & Mike Berkowitz of Sierra Club's Michigan Chapter.

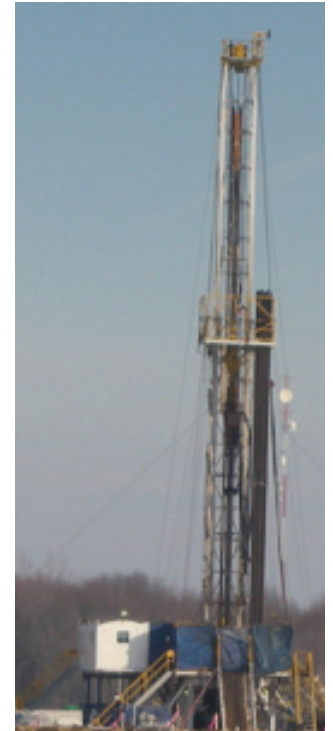
Wednesday, September 17

7:00 pm,

Brighton District Library, 100 Library Drive, Brighton, MI 48116.

Free Admission.

Find out what the Michigan legislature has been up to in regard to our environmental issues, what the 2014 election is going to look like, how the political races in your area are shaping up, and how it will impact us.



Fracking tower coming to a field near you?

The Living Building Challenge,

presented by Corinne Bodeman.

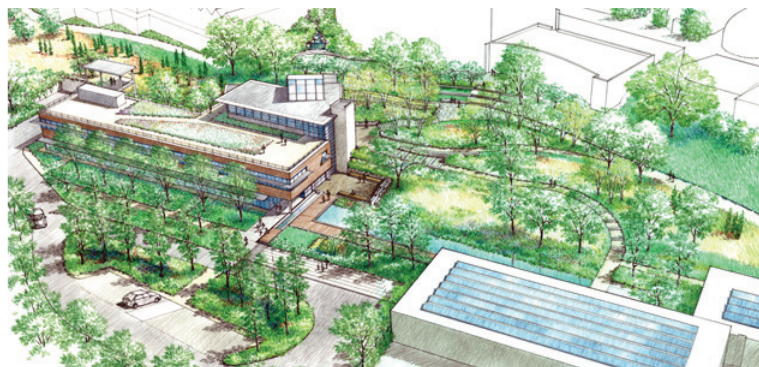
Wednesday, November 19

7:00 pm,

Brighton District Library, 100 Library Drive, Brighton, MI 48116.

Free Admission.

The Living Building Challenge defines the most advanced measure of sustainability in the built environment possible today and acts to diminish the gap between current limits and ideal solutions, focusing more on net energy rather than off-the-grid buildings. The Living Building Challenge Collaborative: Great Lakes is a community-based, in-person group of Living Building Challenge Ambassadors that provides an opportunity for informal learning experiences and advances community transformation. Collaborative members create the local conditions that allow for development of Living Buildings, Sites and Neighborhoods.



STATE DEPARTMENT ENABLES ILLEGAL ENBRIDGE SCHEME TO EXPAND TAR SANDS

Thursday, August 21, 2014

Contact: Gabby Brown, gabby@newpartners.com, 202-261-2382. Mark Westlund, 415-977-5719; mark.westlund@sierraclub.org

This week, the State Department released documents revealing a scheme by Canadian tar sands giant Enbridge to bypass the Presidential Permit process for expansion of its Alberta Clipper tar sands pipeline. Enbridge has applied to double the capacity of the pipeline, also known as Line 67, to put it on par with the tar sands carrying capacity of the controversial Keystone XL pipeline. The State Department has previously made clear that any such expansion requires approval and comprehensive environmental review, and is currently undertaking that review.

Not content to wait for the legally required federal permitting process and environmental review, Enbridge has devised a scheme to transfer the dirty tar sands crude from Alberta Clipper to another pipeline, Line 3, just north of the border, then re-transfer it back to Alberta Clipper once it's crossed into the United States. This blatant scheme to move up to twice the amount allotted in Enbridge's permit seems to assert that the pipeline would only impact the few miles around the border crossing, a clear misinterpretation of both the letter and the spirit of the law.

Shockingly, in a two page letter, a mid-level State Department official indicated Enbridge could move forward with this plan despite the fact that it clearly violates the capacity limit imposed by the permit the State Department issued.

"With no public notice, the State Department has shockingly backtracked on its commitment to require environmental review and approval before more dirty tar sands oil enters the United States through Minnesota," said Marc Fink, a Minnesota-based attorney with the Center for Biological Diversity.

"The State Department has violated the public's right to transparency and participation in approval of projects that impact the health and safety of our communities, land, water and climate," added Kate Jacobson, of MN350. "Allowing significantly more tar sand oil to flow before a full environmental impact analysis is complete is unacceptable and irresponsible."

"The State Department doesn't get to make up the law as it goes. This is particularly troubling in light of allegations of an inappropriately cozy relationship between the State Department and the oil industry surrounding the Keystone XL environmental impact statement," said Jim Murphy, Senior Counsel for National Wildlife Federation. "The State Department cannot in effect approve a doubling of the amount of climate-disrupting tar sands being carried into the Great Lakes region without conducting a proper public review and permitting process. That is a clear violation of the law and the State Department must immediately reverse course and put the best interests of America first."

"When will Canada have enough risky pipelines cutting thru our land and water? When is enough?" asked Jane Kleeb, of Bold Nebraska. "For the promise of jobs and energy independence, landowners and tribes are being sold out so foreign corporations can get tar sands on the export market. Canada is engaged in a scam circumventing federal, state and local laws all in the name of exporting their tar sands while we take on all the risk of spills."

"Expanding the Alberta Clipper pipeline is entirely inconsistent with the administration's commitment to taking aggressive action on climate change, and it's also illegal," said Sierra Club attorney Doug Hayes. "The President's promise to decide Keystone XL based on its climate impacts is completely meaningless if the State Department is simultaneously permitting other tar sands pipelines behind closed doors."

"Enbridge can't show how this project is in the nation's interest, so instead they are trying to hoodwink its regulators," said Anthony Swift, attorney for the Natural Resources Defense Council. "Blindly approving Enbridge's tar sands pipeline expansion would make a mockery of our permitting process and undermine our efforts to address climate change."

"Allowing more tar sands oil into the United States without conducting impact analyses is unconscionable and illegal. A State Department spokesman said just this week that the Department is committed to 'a rigorous, objective, and transparent review process' with regards to pipeline approval. That is not possible if they eschew a review process altogether," said Luísa Abbott Galvão of Friends of the Earth.

Jason Kowalski, Policy Director of 350.org, said "When we blocked Keystone XL, the fossil fuel industry learned that they have a much stronger hand to play in back rooms than on the streets. They will break the law and wreck our climate if that's what it takes for them to make a buck -- and we will be ready to stand up to them, from Nebraska, to Minnesota, to the streets of New York City."

"Apparently John Kerry's Department of State doesn't think the President's Climate Test should apply to an additional 350,000 barrels per day of dirty tar sands oil. They're trying to approve almost half the volume of the KXL pipeline, but it won't work. If this stands, this will be a disaster for the climate and for the President's credibility," said Stephen Kretzmann, Executive Director of Oil Change International. "It's terrible timing, as the President prepares to join other world leaders in New York next month. You can't approve more tar sands into the U.S. and then turn around and talk about a commitment to combating climate change with a straight face. That's simply climate denial."

Secretary Kerry and President Obama have both committed to making meaningful progress on climate, and with the international Climate Summit around the corner, the eyes of the world are watching to see how seriously the United States is taking climate action. Allowing this decision to stand would prioritize Enbridge's desire to expand development of the dirtiest fuel source on the planet over the interests of the American people, and would undermine any credibility President Obama has to encourage other countries to commit to combat climate change.

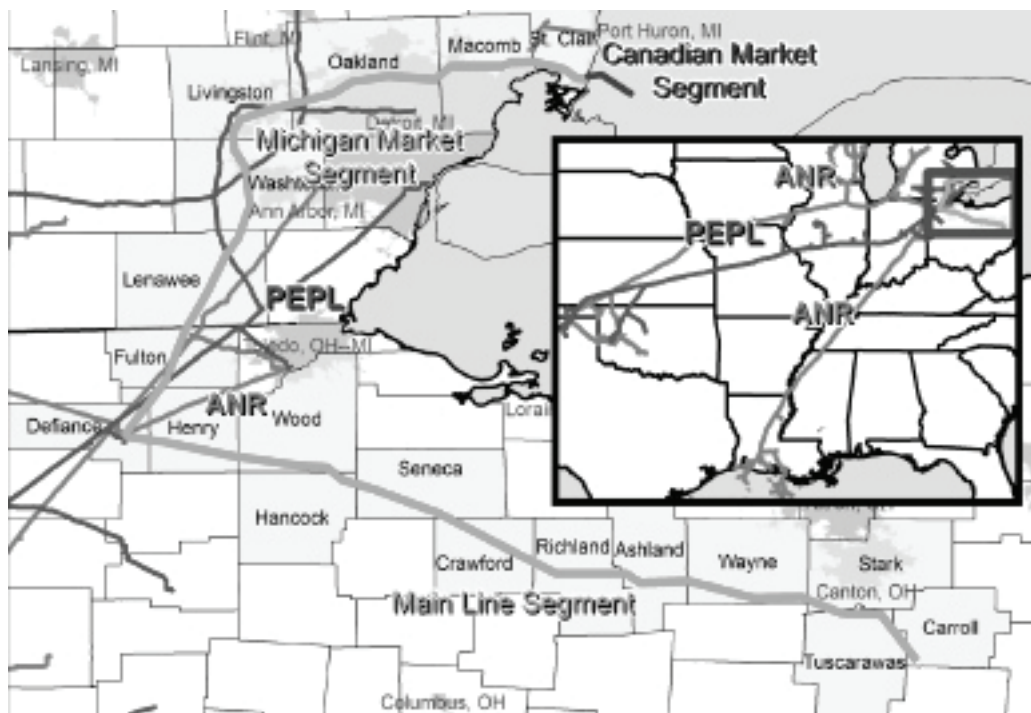
In the event that the Obama Administration does not recognize the dire consequences of allowing this decision to go through, groups opposed to tar sands expansion are currently evaluating their legal options to force an injunction on construction.--

Anne Woiwode, State Director, Sierra Club Michigan Chapter
109 E. Grand River Ave, Lansing, MI 48906



Sierra Club—Crossroads Group
P.O. Box 306
Brighton, MI 48116

Thanks to our friends at Big PDQ printing for their support. [810-229-2989 http://www.bigpdq.com/](http://www.bigpdq.com/)



Energy Transfer Rover Pipeline