

WE SHALL OVERCOME BECAUSE THE ARC OF THE MORAL UNIVERSE
IS LONG BUT IT BENDS TOWARD JUSTICE.

DISTRICT OF COLUMBIA, 1968





What's the Problem?

We're sicker than we used to be

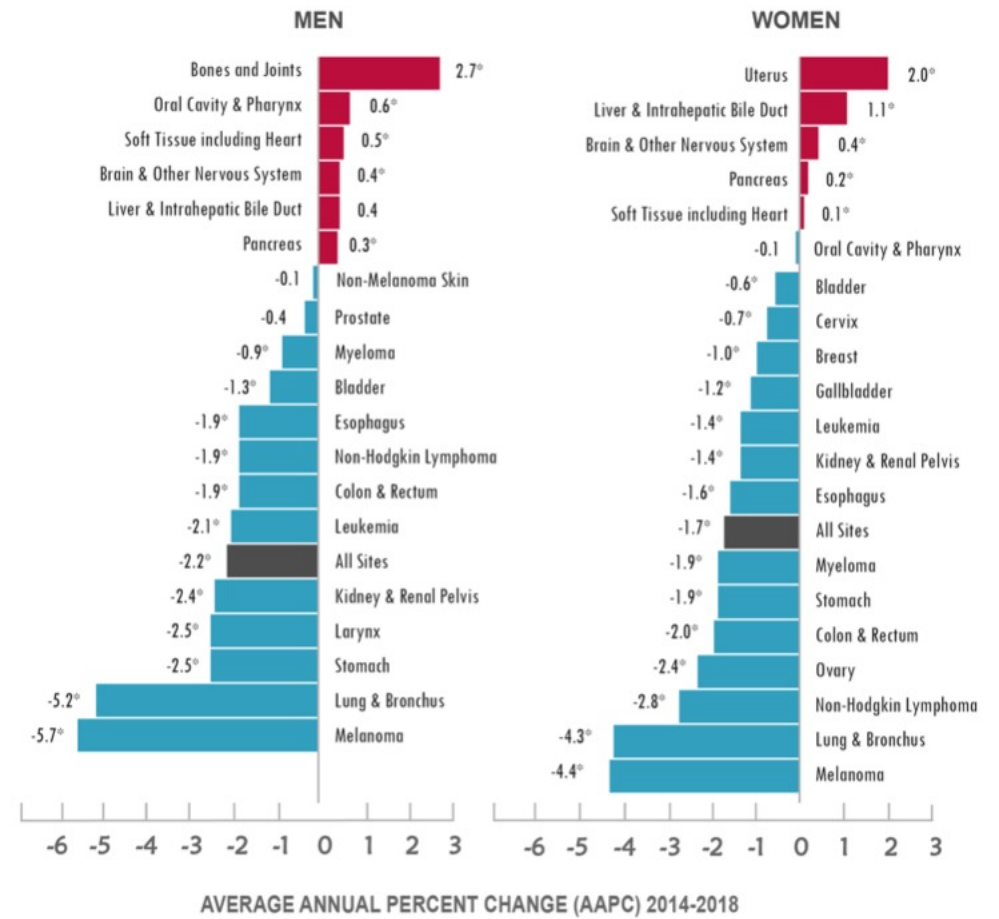


Risk of Dying from Cancer Continues to Drop at an Accelerated Pace

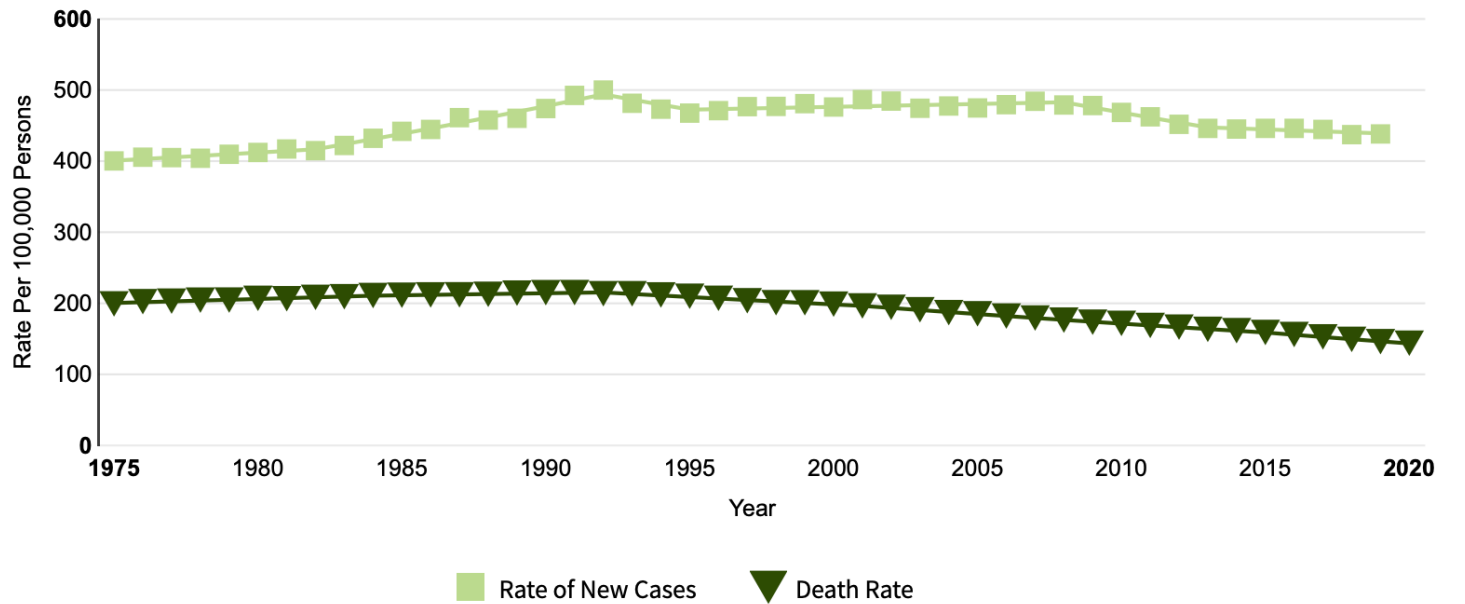
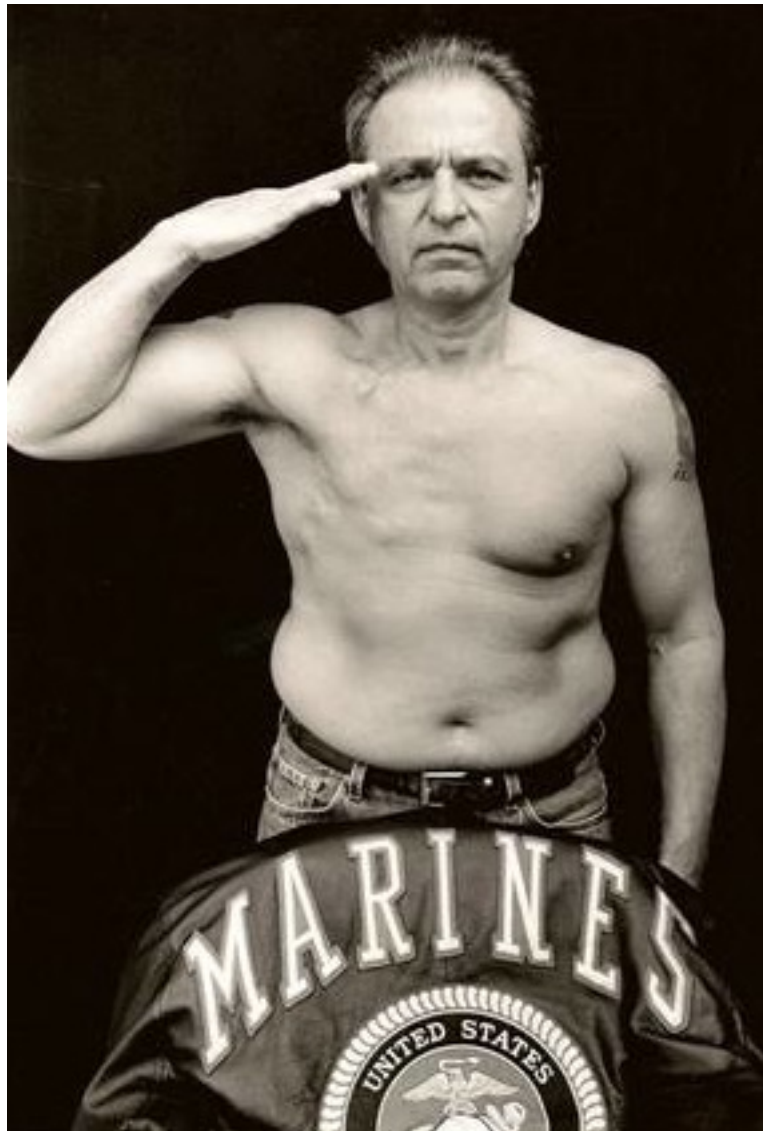
January 12, 2022



NATIONAL TRENDS IN CANCER DEATH RATES



*AAPC is significantly different from zero (p < .05).



New cases come from SEER 8. Deaths come from U.S. Mortality.
All Races, Both Sexes. Rates are Age-Adjusted.
Modeled trend lines were calculated from the underlying rates using the [Joinpoint Trend Analysis Software](#).

The cancer incidence rate has gone up from 400 to 438 per 100,000 people.

• **Black women have a 41% higher breast cancer death rate** than White women even though their incidence of breast cancer is 4% lower.

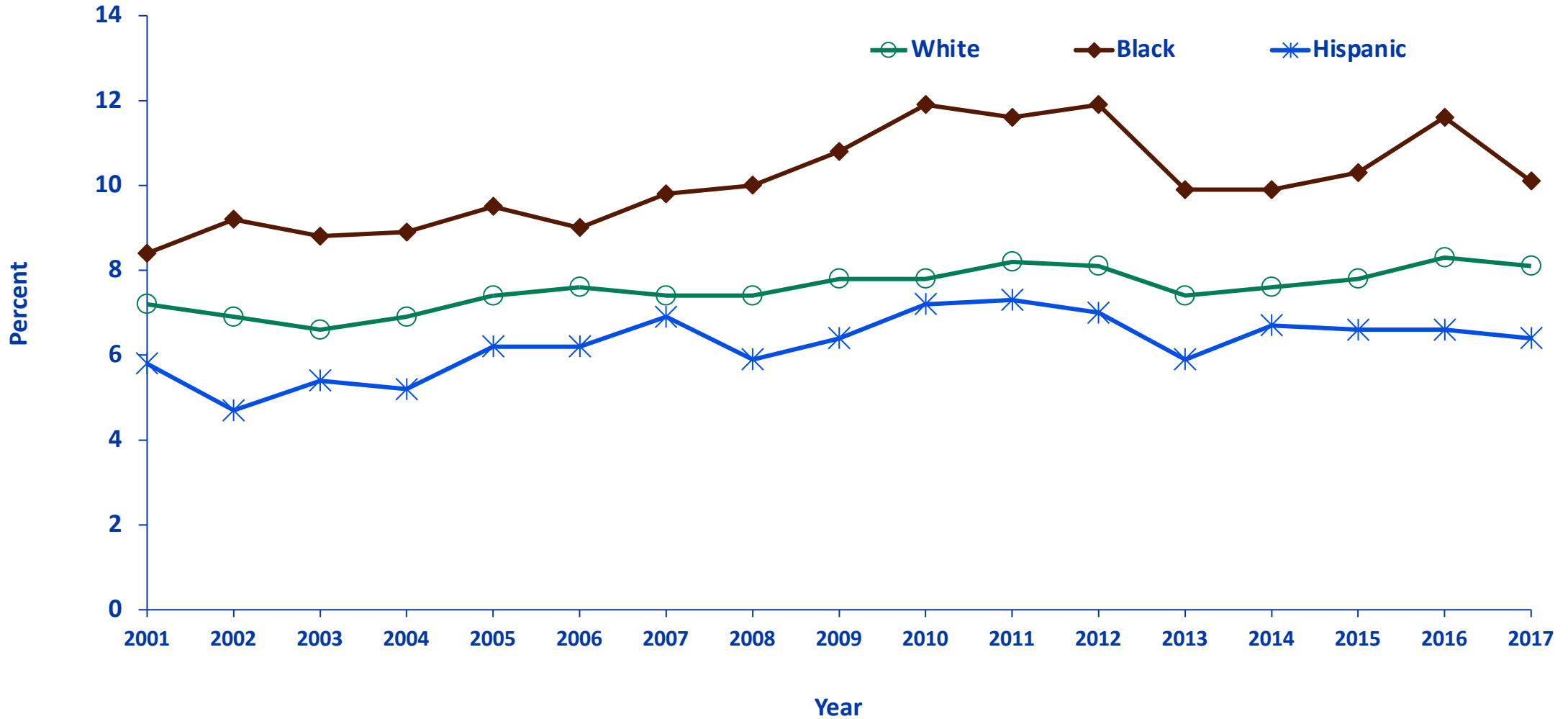
• **Cancer survival rates are lower for Black people than for White people for almost every cancer type.**

• Although the cancer incidence rate among children has been increasing some since the mid-1970s, **cancer death rates in children have declined by 71%** since 1970, largely due to improvements in treatment and more children taking part in clinical trials.

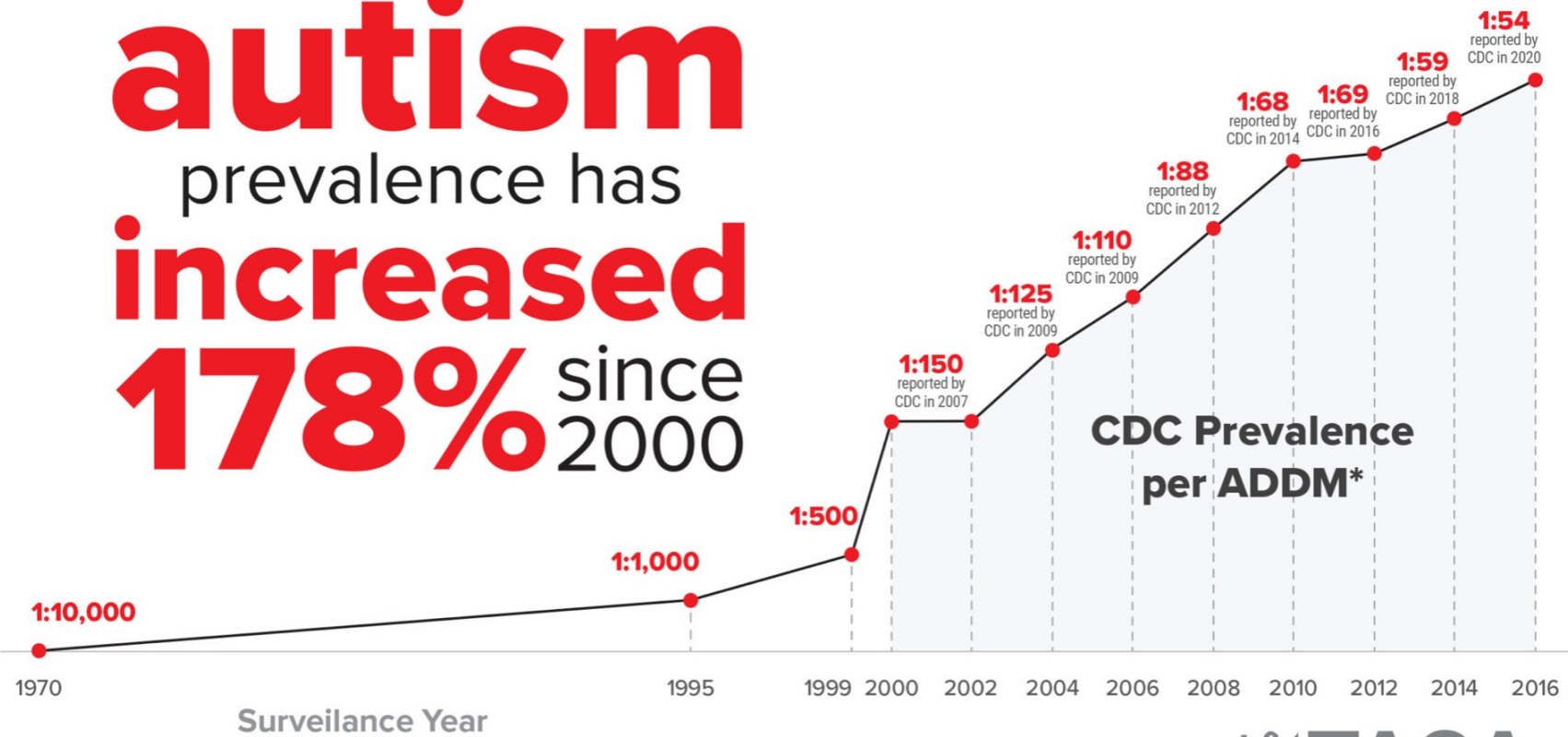
• **Leukemia remains the most common childhood cancer**, accounting for 28% of all cancers in children. **Death rates for leukemia went down by 84%** from 1970 through 2019.



CDC Current Asthma Prevalence by Race and Ethnicity: United States, 2001-2017



autism
prevalence has
increased
178% since
2000



*ADDM (Autism and Development Disabilities Monitoring Network)





**So we're sicker than
we used to be.**

**But what does that
have to do with
chemicals?**

What we know from wildlife tragedies: Rachel Carson and the birds



Biologist and author Rachel Carson in 1963.
RACHELCARSON.ORG

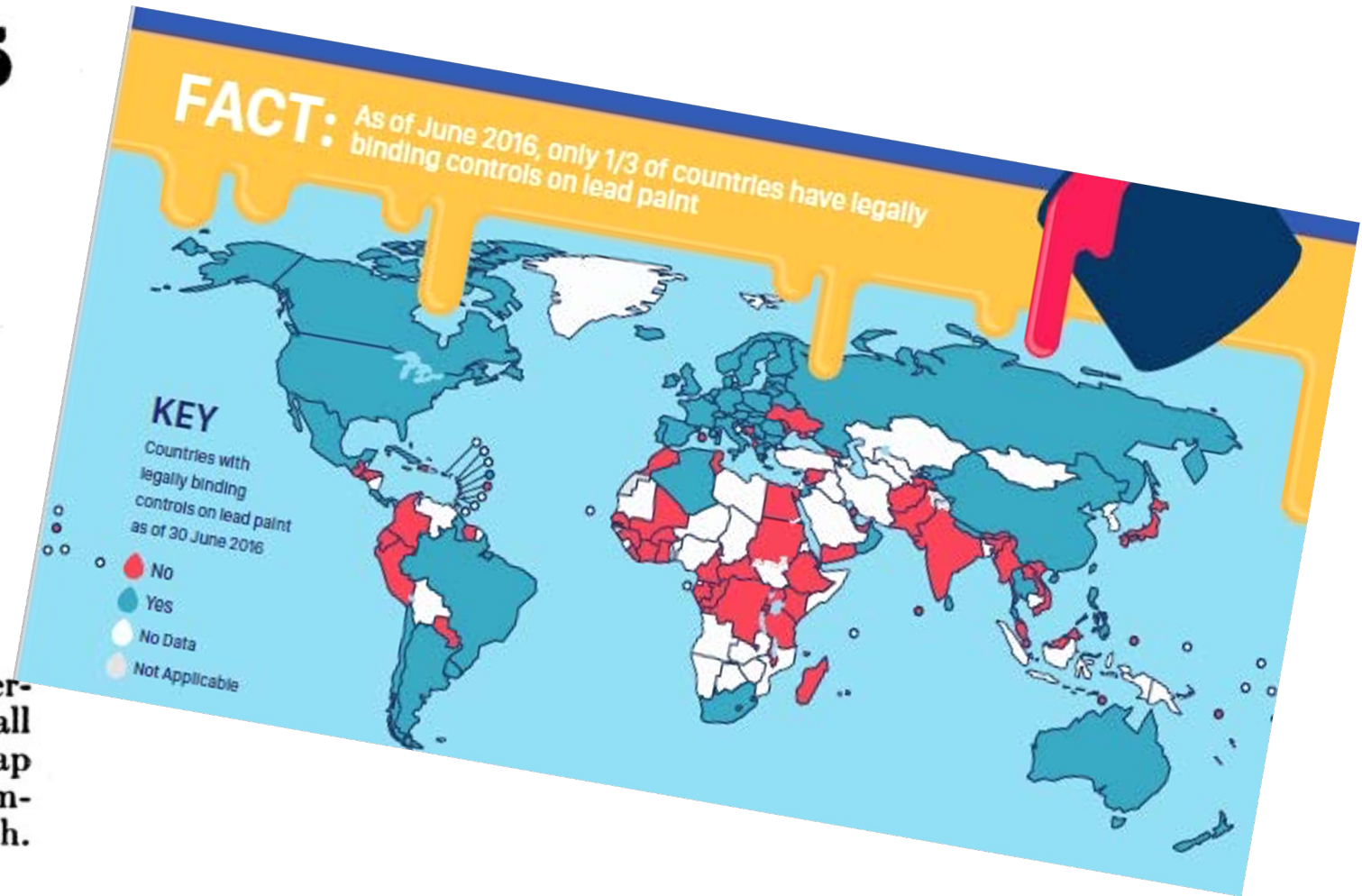
We Know From Children Poisoned by Lead

Finger Prints



THERE is no cause for worry when fingerprint smudges or dirt spots appear on a wall painted with Dutch Boy white-lead. A little soap and water will remove them easily without harming the paint or marring the beauty of the finish. Painted walls are sanitary, cheerful and bright.

We carry a complete line of painting supplies including Dutch Boy white-lead, linseed oil, flattening oil, brushes and all other accessories.



What We Know From Biomonitoring

Mother's Lips

Father's Color Hair



Chemical
Industry's
lead,
mercury,
PFCs, PBDE,
PCBs,
dioxin, BPA
and
perchlorates

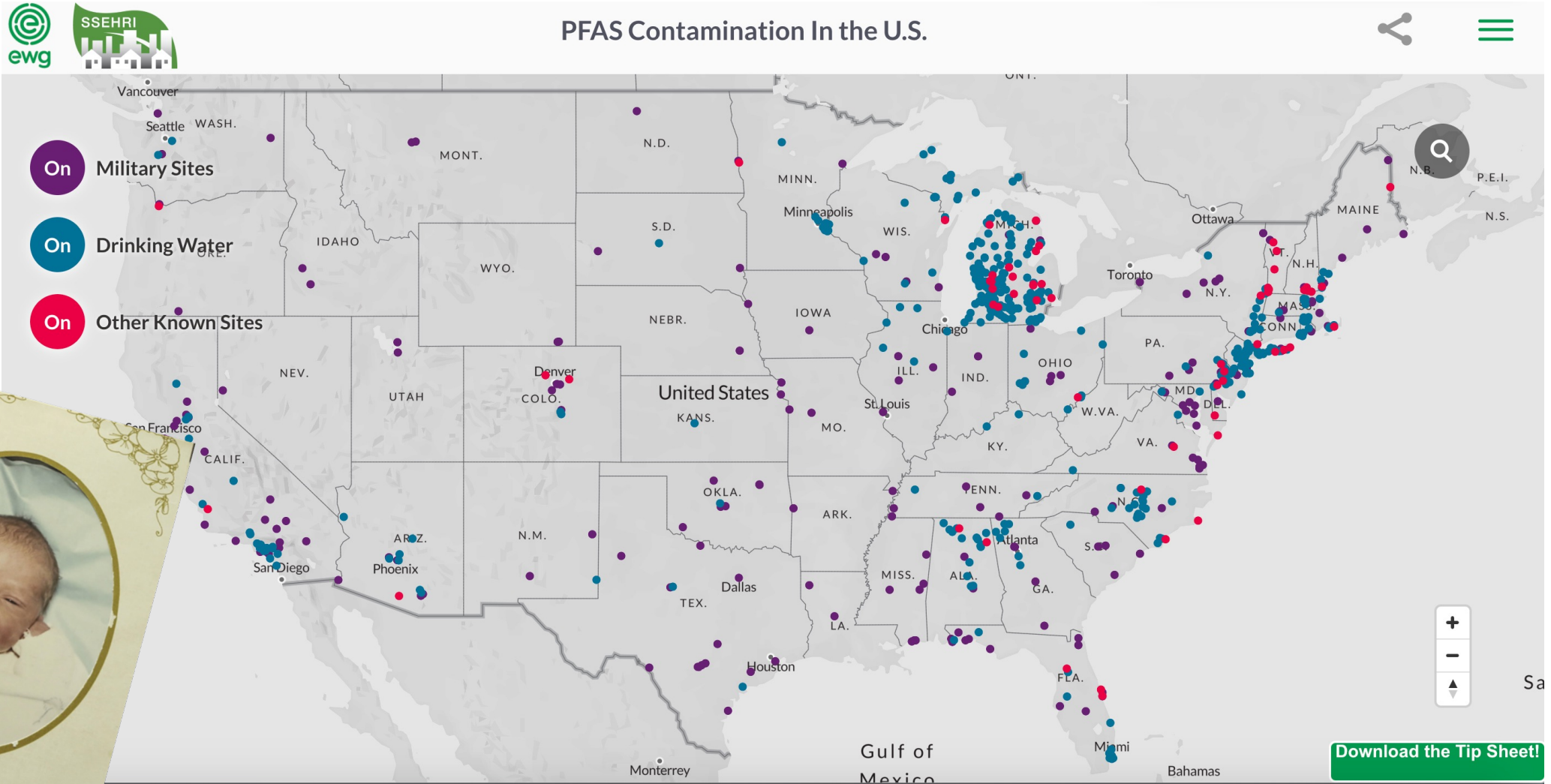


**We Know
From the
Research
That
Matches
Chemical
Exposures
to
Disease
Incidence**

We Know From the Death and Diseases of Animals: Wilbur Tennant's Cows and PFAS



We Know From Workers Exposed to PFAS



We Know from Workers With Leukemia After Exposure to Benzene



**We Know
From
Communities
Exposed to
Formaldehyde**

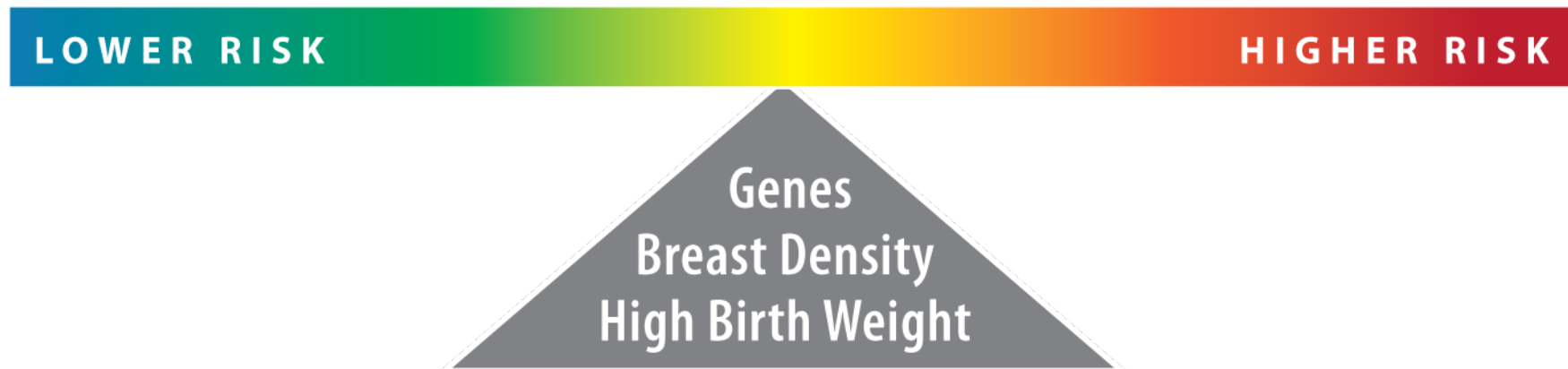


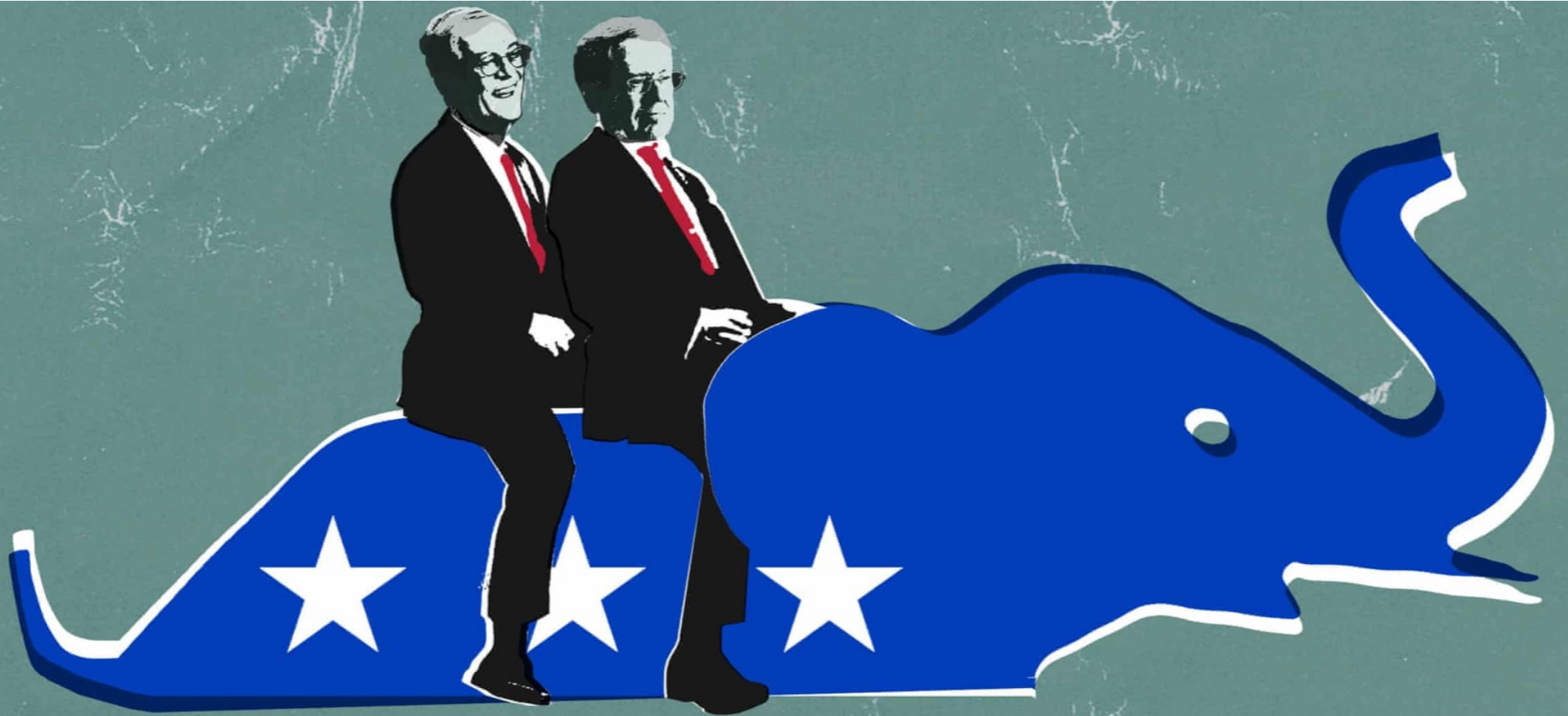
- Dead birds and cows
- Workers and soccer goalies with leukemia
- PFAS workers' children with birth defects
- Katrina survivors sick from formaldehyde fumes
- Children with lead poisoning and IQ loss
- Babies born pre-polluted
- Women with breast cancer who were exposed to DDT



But we still don't have a government that protects us

One big reason is that chemicals most often contribute rather than cause and the rules are about cause





Big Money

How the Koch brothers

Still sometimes we win. And we can win more when we organize for solutions.



ELSEVIER

Environment International

Volume 125, April 2019, Pages 300-319



Review article

An overview of worldwide and regional time trends in total mercury levels in human blood and breast milk from 1966 to 2015 and their associations with health effects

Brij Mohan Sharma ^a, Ondřej Sáňka ^a, Jiří Kalina ^a, Martin Scheringer ^{a, b}

^a Research Centre for Toxic Compounds in the Environment (RECETOX), Masaryk University, 62500 Brno, Czech Republic

^b Institute of Biogeochemistry and Pollutant Dynamics, ETH Zürich, 8092 Zürich, Switzerland

Highlights

- Mercury (Hg) exposure overview prior to the Minamata Convention is provided.
- Total Hg levels in blood and breast milk have significantly declined since 1960s.



NEAR TOTAL DDT BAN ANNOUNCED

Formulators Ask Order
Be Set Aside

By STAN BENJAMIN
WASHINGTON (AP) — The
Environmental Protection
Agency announced Wednesday



ACT NOW • DONATE • SIGN UP

New Law Protects Drinking Water and Firefighters from Perfluorinated Chemicals

Health Advocates, Firefighters Cheer Groundbreaking Restrictions on Firefighting Foams



LATEST NEWS

[Next Steps in Tackling PFAS Chemicals in Washington State](#)

August 7, 2019



[House Passes NDAA Amendments to Tackle PFAS Contamination Crisis](#)

July 12, 2019

[Opportunity Before Congress to Stop Military Use of Toxic Firefighting Foam](#)

June 24, 2019



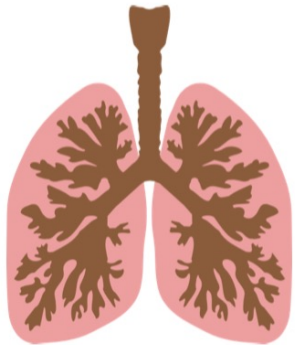
[New Study Finds Toxic PFAS Chemicals in Compost](#)



Artificial turf poses a health risk to children through chemical exposures.

Chemicals known to be carcinogenic such as heavy metals, volatile organic compounds (e.g. benzene), polycyclic aromatic hydrocarbons, and 1,3-butadiene have been detected in turf infill made from recycled tires. Further study is needed to characterize the complete chemical composition of infill made from materials other than tires.

Exposure can happen through:



Inhalation of chemicals and particles



Dermal contact and absorption through the skin or open wounds



Ingestion of turf infill particles





SOY-BASED
E.P.A. AWARD-WINNING
FORMALDEHYDE-FREE TECHNOLOGY

More phthalates banned in children's toys by US government



By **Jen Christensen**, CNN

🕒 Updated 7:22 PM ET, Fri October 20, 2017

