

Chesapeake

Maryland Chapter of the Sierra Club

Maryland General Election Guide 2010

Environment Wins in Maryland Primary

By Betsy Johnson and Alana Wase—Thank you for taking the time and voting for the environment in September's primary!

We're happy to report that 80% of the Sierra Club endorsed state and local candidates in contested races **won** their primaries. For most of them, winning the primary also means winning the election due to the partisan makeup of most districts in Maryland. Here's a partial rundown:

- ♦ In **CHARLES COUNTY** environmental activists made saving Mattawoman Creek a major issue in the successful campaigns of two local candidates, **Candice Quinn Kelly** for commissioner president and **Ken Robinson** for commissioner. Their election in November will strengthen our campaign to have a majority of the commissioners supporting protection for this pristine but threatened creek.
- ♦ In **ANNE ARUNDEL COUNTY**, where water quality is a concern, local Sierra Clubbers enthusiastically went door to door and waved signs in support of **Chris Trumbauer's** successful campaign. We know that Trumbauer, the West and Rhode Riverkeeper, will advocate for the environment on the county council.
- ♦ In **FREDERICK COUNTY**, Sierrans have been working hard for years in the fight against a waste incinerator coming to their county. Sierrans motivated their neighbors to get county commissioner candidates opposed to the incinerator, **Kai Hagen**, **Eliss Buruss**, and **Janice Wiles**, elected in the primary.
- ♦ In **BALTIMORE COUNTY**, where we have been working to "green" the county, primary victories for **Kevin**

Kamenetz, **Vicki Almond**, and **Mike Ertel** give hope for a much friendlier reception from the county executive and council. We also celebrate primary victories for state delegate nominees **Lori Albin** (District 42) and **Mary Washington** (District 43) in Baltimore city.

- ♦ In **MONTGOMERY COUNTY**, **Delegate Karen Montgomery** ousted long-time environmental nemesis Senator Rona Kramer in a huge gain for our side! In addition, we won all three delegate seats, picking up two new environmental supporters in **Eric Luedtke** and **Craig Zucker**. The Sierra Club partnered with the Maryland League of Conservation Voters, (MD-LCV), Progressive MD and the Service Employees International Union (SEIU) on this campaign to make the environment a pivotal issue that won the day.
- ♦ In District 46 (**BALTIMORE CITY**), **Bill Ferguson**—political newcomer and strong environmental supporter—ousted Senator George Della, whose lifetime LCV score was only 56%.

These last two victories will make it easier to get good environmental legislation through the Maryland Senate, which has been called "the place where good bills go to die."

We were sad to lose District 47 **Senator David Harrington**, who was immensely helpful with our legislative agenda, and **Delegate Saqib Ali** who lost his bid for the Senate in District 39. Other losses hurt as well but on the whole, we did very well.

To see a list of our endorsed primary candidates and the results of their campaigns go to our web site:
(continued on page 6)

O'Malley Is a Clear Choice for Governor



Maryland Governor Martin O'Malley

By Betsy Johnson—In November we have a clear choice between two very well known gubernatorial candidates: our current Governor, Martin O'Malley, and the former Governor Bob Ehrlich. The Maryland Chapter of the Sierra Club urges you to vote for Governor O'Malley and work to elect him for a second term.

For those of you who are angry at Governor
(continued on page 5)



Explore, enjoy and protect the planet



2010 General Election Voters Guide

- 2 Letter from the Chair
- 3 Explore, Enjoy, and Protect—Right Here in Maryland
- 3 A Vote for Frank Kratovil Is a Vote for the Environment
- 4 For the US Senate It's Barbara Mikulski
- 6 Club Endorses Win in Anne Arundel
- 6 Victory in Carroll County; A Challenge in Frederick
- 7 Smarter Growth Takes a Big Step Forward in Charles County Primary
- 7 The Montgomery County Group Says Thanks
- 8 What You Can Do NOW to Elect Candidates Who Share Your Concern for the Environment in Maryland
- 9 Who Gets Our Endorsement?
- 10 Candidates Endorsed by the Maryland Chapter
- 12 How to Write a Letter to the Editor
- 13 Call for Nominations for Chapter and Group Excoms
- 14 Maryland Chapter Leaders
- 15 Outings Information and Schedule

The opinions expressed in this newsletter are in general aligned with those of the environmental community in Maryland, but are strictly those of the authors and not necessarily official policy of local, state or national Sierra Club entities. The Sierra Club prides itself on being a grassroots volunteer organization. The concerns and opinions of all its members are welcome in these pages.

Letter from the Chair



Ron Henry, Chapter Chair

Hello, All!

The 2010 primary elections are over and the campaigns are well underway in preparation for the general election on November 2, 2010. Many thanks to our members who participated in the primary candidate endorsement and election process. Special thanks

to Betsy Johnson, our chapter political chair, and all the group political chairs and committee members for their determination and persistence in seeing the process through—you all deserve the kudos!

Now, it is on to the general election! I urge each of you to provide *active* support to our environmental candidates. Volunteer for a phone bank. Assist at candidates' campaign offices or campaign appearances. Pass out campaign literature door-to-door or at campaign events. Make a financial contribution to help our candidates get their message out.

I cannot overemphasize how important it is for each of us Maryland Chapter Sierrans to become active in the 2010 election. We are at the tipping point for extreme, negative environmental effects resulting from air, water and land pollution. By electing leaders who understand what is at stake here, we can insist that strin-

napolis and Washington, DC, we must get our candidates elected.

Our current political situation can seem overwhelming. We have a down economy; extreme rightists, backed by well-funded sources such as the oil-billionaire Koch brothers, are pushing hard to prevent changes in their lifestyles or level of consumption; and the public is fed up with what is perceived as either inaction or unacceptably slow progress for change that they had voted for in 2008.

This provides an unwanted challenge for environmental advocacy. With an emphasis on the economy, elected leaders default to promoting "business, as usual," assuming that what is good for business is good for the economy, and thus for all of us. Of course, that is why we have the severe and cumulative air, land, and water pollution issues that created the "tipping point" we are currently facing.

The supposition appears to be that getting back onto the same wrong pathway will rectify all economic problems. To be kind, that epitomizes specious reasoning. Yes, remaining ignorant is a choice, but playing "ostrich" and burying one's head in the sand so as to not see anything one cares to not see is not a solution, ever. And, of course, what remains exposed is highly vulnerable.

Unfortunately, many will choose to remain ignorant of the issues because acknowledgement would ne-

I urge each of you to provide active support to our environmental candidates. Volunteer for a phone bank. Assist at candidates' campaign offices or campaign appearances. Pass out campaign literature door-to-door or at campaign events. Make a financial contribution to help our candidates get their message out.

gent, near-term (five years or less for many issues) measures be taken to correct or mitigate those effects to the greatest extent achievable.

This can only be accomplished if we, each of us, believe it can and must be done! Then, we Sierrans must get our message out to our families, friends, neighbors, and co-workers. Talk to them, over the fence or over the phone, and help them understand why we are so passionate about electing officials who will vote to protect our health and our homes from environmental degradation. When we make our passion contagious, we can turn out the votes to get our endorsed candidates elected. Remember, if we want to ensure that the political commitment to environmental success is in place in An-

cessitate making conscientious choices about our unsustainable American lifestyle and reining in the habits of overconsumption that have created our environmental predicament. But if we are serious about passing onto future generations a habitable and sustainable planet Earth that they deserve, and that we borrowed from them during our lifetime, then our choice is clear.

If you haven't already done so, then make the clear choice that will make the difference for our future generations—your progeny and mine. And we can do it! Get engaged in our candidates' campaigns and get others involved, too. I'm counting on us to do whatever is needed!

Until next time. ■

Campaigns: Conservation and Political

Explore, Enjoy, and Protect —Right Here in Maryland!

By David O'Leary—A few days ago, I received a card and note from the realtor with whom we worked when we moved to Maryland, reminding me that it was the fifth anniversary of the day we purchased our house. I spent some time reflecting on these years, focusing on our Sierra Club conservation campaigns, and the diversity of the natural places I've visited.

I've had the good fortune to visit many parts of the state, and of course, there is always more to explore. From the "frost pocket" Cranesville Swamp, just outside the West Virginia-Maryland border, to the Bald Cypress Swamp in Calvert County, and from Lostland Run in Potomac State Forest to Rocks State Park in Harford County, we are blessed with a wealth of interesting and beautiful sites. I've hiked most of the C&O Canal Towpath, and paths along urban and suburban rivers and streams, including the Patapsco River, Herring Run and the Anacostia River and its tributaries. I've paddled in Tuckahoe Creek and the Pocomoke River on the eastern shore, and of course Mattawoman Creek in Charles County. All of these are great places to visit, and I hope to see you on a chapter hike or out walking through the woods sometime soon as I continue to travel around our state.

As chapter conservation chair, I tend to see all natural places, from my backyard to the parks and forests around our state, through a lens of preservation and protection. The scope of what we must do to protect these places, including threatened streams like Mattawoman Creek (which you have probably read about in previous issues of *Chesapeake* and on the chapter's website), continues to broaden. There is plenty of work to do in our local communities and watersheds. But air and water pollution are not just local challenges. We all contribute, di-

rectly or indirectly, in more or less substantial ways, to problems such as climate change, accumulation of substantial amounts of plastic and other debris in the oceans, and resource depletion.

Fortunately, working to protect local watersheds from stormwater runoff and pollutants, reducing our use of energy and seeking out cleaner energy sources, and increasing programs for material reuse and recycling in our communities make a difference locally, and also contribute to addressing global problems. We should all strive to think globally and act locally, recognizing that our local actions do have global impacts—both positive and negative.

The Maryland Chapter and the local groups have active campaigns* underway working for clean energy, clean water, waste reduction, habitat protection, and other concerns. Check the chapter website —maryland.sierraclub.org—to find out how you can get involved. Just as our Maryland ecosystems require diversity to remain healthy, a wide range of skills and backgrounds are needed for successful campaigns. Please take a few minutes to consider how you can play a part, and contact me, the chapter staff, or one of the other campaign leaders to discuss helping out. Thanks for all that you do! ■

David O'Leary is the Conservation Chair of the Maryland Chapter.

* For more information, please contact us:

Watersheds Team:

Carol Nau, nau.carol@gmail.com

Energy Team:

Alana Wase,
alana.wase@mdsierra.org

Save the Mattawoman Team:

Baird Straughan, 301-657-8121

Legislative Committee:

D. O'Leary, dave.oleary@mdsierra.org

See page 14 for the contact information for other conservation issues.

A Vote for Frank Kratovil Is a Vote for the Environment

By Matt Dernoga—I'm managing a County Council campaign in Prince George's County. My friends and fellow activists asked me how long a vacation I would be taking from political activism after the primary on September 14th (there are no general election opponents). The answer is that after about one week, I'm going to go over to the Eastern Shore and knock on some doors for Congressman Frank Kratovil.

Kratovil is facing off against Andy Harris in the briefly anticipated rematch from 2008 (Harris announced his 2010 candidacy a few milliseconds after he lost), where Kratovil came from behind to upset Andy Harris by a mere thousand votes. If you actively supported



Congressman Frank Kratovil, Maryland 4th District

swept up by the fossil-fuel interests and political expediency in Washington, and fall short of your potential. Two years later, Kratovil is a proven commodity, and

Andy Harris is still the same environmentally destructive state senator from Annapolis who thinks the solution to our energy problems is drilling more at home, like in the Arctic National Wildlife Refuge.

Kratovil in 2008, you should be equally enthusiastic about doing so again. Why? Because Andy Harris is still the same environmentally destructive state senator from Annapolis who doesn't mention the word "environment" on his campaign website, and who thinks the solution to our energy problems is drilling more at home, like in the Arctic National Wildlife Refuge (ANWR)! Sadly, he didn't mean geothermal. Someone should ask him what his stance is on drilling off the coast of Maryland.

There's another reason why you should be energized about supporting Kratovil. Two years ago, he was a candidate with potential to represent his district on environmental issues crucial to its well-being, and to be a partner with the environmental community in restoring the Chesapeake Bay. It's easy to get

his pro-environment and pro-Bay votes are a validation for the work I and fellow Sierrans put into his campaign in 2008.

As someone who has eyed Kratovil's environmental votes carefully, I have been impressed. He voted for the final version of the stimulus package, which meant record amounts of investment into clean energy. Kratovil supported legislation called Homestar, which offers incentives for Americans to renovate their homes to become more energy-efficient. He also voted for legislation called the 21st Century Green High Performing Public School Facilities Act, which authorized billions of dollars for renovating our 25,000 public schools so they are cleaner, greener, and provide a better learning environment for students. Kratovil held big oil accountable by voting for the

(continued on page 4)

Election 2010: U.S. Congress, U.S. Senate

Kratovil Deserves Our Support in District 4

(continued from page 3)

CLEAR (Carbon Limits and Energy for America's Renewal) Act, which is in response to the oil disaster in the Gulf of Mexico. The legislation increases the strictness of the safety measures oil companies face when drilling, and holds oil companies accountable for their spills by eliminating the \$75 million liability cap on spill damages.

However, it is Kratovil's "yes" vote for the American Clean Energy and Security Act, otherwise known as federal climate legislation, that stands above the rest. Unfortunately, counterpart legislation didn't pass the Senate, for this was the most important piece of environmental legislation in several decades. It authorized over \$100 billion in public investment for jobs creating clean energy over 10 years, and by putting a price on carbon, it would have driven far more in private dollars. It would have put the U.S. on a trajectory of decreasing greenhouse gas emissions, therefore improving the likelihood of a global deal in Copenhagen. The bill also would have decreased U.S. dependence on foreign oil by millions of barrels a day. The EPA estimated that this would cost the average American less than the cost of a postage stamp a day.

With strong industry opposition to the bill, and detractors mislabeling it as an energy tax, this was a politically charged piece of legislation. I heard that in the days leading up to the vote, the phone calls that came in were overwhelmingly against the bill. The opponents were noisy, and many congressmen who were narrowly elected in 2008 were reluctant to vote "yes." Certainly the safe vote for Kratovil would have been "no." The Congressman voted "yes." Regardless of what happened in the Senate, this decision by Kratovil to place the wellbeing of the country and planet ahead of his political career is one that all of us should thank him for. The legislation narrowly passed in the House.

Comparing Andy Harris's environmental record next to Representative Kratovil's makes the stakes clear. Harris has been one of the greatest villains in our state legislature for the Chesapeake Bay and the health of all Marylanders. During his term, Harris has voted against a renewable energy standard, against energy conservation standards for Maryland, for a delay in the expansion of oyster sanctuaries in the Bay, against incentives for next-generation biofuels, and against an increase in Maryland's auto emissions standards. In 2010, Harris even voted against a recycling option for residents of apartment buildings! He has a lifetime score of 13% by the League of Conservation Voters (LCV); Kratovil's score is 79%. It is instructive to note that after Harris defeated incumbent Wayne Gilchrest in the 2008 Republican primary, Gilchrest supported Kratovil in the general election because of Harris's reactionary record on environmental and other issues.

Andy Harris's proposed "solutions" to our energy challenges would mean billions of dollars in profits for the oil industry at the expense of Maryland's beaches, our public lands, and our vibrant ecosystems. Frank Kratovil's actions on addressing our energy challenges will mean a healthier Chesapeake Bay, opportunities for farmers to profit from sustainable farming techniques, more green jobs from clean energy, less pollution from fossil fuels, and a tourism industry whose head is above the water, literally.

The choice couldn't be starker. Vote for Frank Kratovil, give him a few spare hours of your time making phone calls on his behalf, or knock on doors in his name. He's earned it. ■

Matt Dernoga worked as the Sierra Club's political intern on the election of Congressman Frank Kratovil in 2008. Congressman Kratovil's campaign website is www.kratovil.com.

For the U.S. Senate, It's Barbara Mikulski



Senator Barbara Mikulski

By Chris Yoder—The Sierra Club endorses Senator Barbara Mikulski for reelection to the United States Senate. Our endorsement is not based on the hope that she might turn out to be a champion for the planet; she already is. Since Mikulski was first elected to the Senate in 1986 she has been creating a rich legacy of protecting Maryland's environment. If re-elected, she will continue as a senior member of the Appropriations Subcommittee on Commerce, Justice and Science, a position that will allow her to build on her record.

Senator Mikulski's commitment to the Bay is unquestioned, and supported by solid legislative achievements.

No environmental issue is more associated with Maryland than the condition of Chesapeake Bay. Senator Mikulski's fingerprints are all over the \$438 million dedicated to funding Bay cleanup under the 2008 Farm Bill. From her Appropriations Subcommittee chair, she shepherded funding for the Environmental Protection Agency and National Oceanic and Atmospheric Administration programs targeted at the Bay. Senator Mikulski's commitment to the Bay is unquestioned and, more importantly, is

documented by solid legislation.

Climate change is an environmental issue crucial to Maryland's future generations. Senator Mikulski's Appropriations Subcommittee funded 85% of federally funded climate-related science. Also, she is a co-sponsor of the Global Warming Pollution Reduction Act, and she supported requiring automobiles' average fuel economy to be increased to 35 miles per gallon.

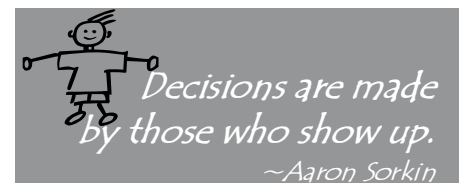
For impact on Marylanders' daily lives, few environmental issues are more significant than improving and expanding public transportation. Maryland users of some public transportation (MARC, the D.C. area METRO, the Baltimore area MTA bus system, and the Southern Maryland Commuter Bus system) see the impact of Senator Mikulski's advocacy. If she is re-elected, future users of Baltimore's proposed Red and Green Lines and Prince Georges/Montgomery Counties' proposed Purple Line will find a friendly ear when they call for the federal funds to transform those projects from dreams to reality.

Oh, did I mention that her League of Conservation Voters' score for 2009 is 100%?

For anyone who cares about the en-

vironment, deciding for whom to vote in 2010 for U.S. Senator is an easy call: Barbara Mikulski. ■

Chris Yoder is the conservation co-chair for the Maryland Chapter.



Election 2010: Maryland Governor

O'Malley for Governor

(continued from page 1)

O'Malley for his decision to build the Inter-County Connector (ICC)—I sympathize. I, too, am angry. I worked for many years against that road, and it makes me ill to see the destruction that is taking place in Montgomery County as they build this monument to a 1950's transportation plan. But, I urge you to look at both candidates side by side and make the choice of who would better serve our environment.

This list on this page is not an exhaustive list, but I think it demonstrates that, while both governors have done good things and not-so-good things, on balance the environmental ethic in the O'Malley administration is far stronger. The Ehrlich administration often tilted toward the interests of industry and development and against environmental protection. The Sierra Club sees the choice as a clear one: O'Malley for Governor in 2010.

Another reason why your vote is especially important in this election is that redistricting will occur in 2011. This means that all federal, state and local districts will be redrawn to reflect population shifts identified in the 2010 census. The governor will have a lot of say about what those districts will look like. So vote as if your districts depend on it—because they do.

Betsy Johnson is the Political Chair of the Sierra Club Maryland Chapter.



Help O'Malley win!

Sign up to volunteer at www.martinomalley.com, or call Betsy Johnson at 301-656-4948.

Issue	Governor O'Malley	Former Governor Ehrlich
TRANSPORTATION	<ul style="list-style-type: none">Is building the ICCSupports a robust transit network including light rail for the Purple Line and the Baltimore Red Line	<ul style="list-style-type: none">Enabled the building of the ICC by partnering with the Bush Administration to fast-track funds and environmental approvalSupports substituting buses for light rail along the Purple Line corridor and for the Baltimore Red Line
LAND PRESERVATION	<ul style="list-style-type: none">Preserved 28,000 acres of land using Program Open Space (POS) fundsFully funded POS for the last two yearsCreated "Greenprint Maryland," the first-in-the nation, web-enabled map showing the relative ecological importance of every parcel of land in the state	<ul style="list-style-type: none">Kept a secret list of state-owned properties to sell for development. Included on the list: Chapman Forest, a treasure that the Sierra Club worked for 10 years to saveRaided millions from Program Open Space to balance the budget, with no action or promise to pay it back
CHESAPEAKE BAY	<ul style="list-style-type: none">Instituted BayStat to track progress on key Bay indicatorsCreated the Chesapeake and Atlantic Coastal Bays Trust Fund to finance a variety of practices to help reduce nutrients and sediment in the Bay and its tributaries	<ul style="list-style-type: none">Actively supported a fee (called the "flush tax") to create funding for upgrading failing waste water treatment plants that were emitting pollutants into the Bay
WATER QUALITY	<ul style="list-style-type: none">Supported strong stormwater regulations in 2007, but then worked to weaken them in 2010Proposed stronger standards to prevent pollution from major poultry operations	<ul style="list-style-type: none">Proposed writing off some waterways as "too polluted" to clean upIncreased pollution limits for Baltimore HarborAbandoned rules for poultry runoff that had been established by Governor Glendening's administration
STAFF	<ul style="list-style-type: none">Appointed people with environmental backgrounds to key environmental posts	<ul style="list-style-type: none">Appointed industry insiders to key environmental posts
ENERGY AND CLIMATE CHANGE	<ul style="list-style-type: none">Created EmPOWER Maryland to promote investment in energy efficiencySigned into law a bill to get 20% of our energy from renewables by 2022Created and funded the solar grant programIncluded MD in the Regional Greenhouse Gas Initiative (RGGI)Actively supported the Global Warming Solutions ActActively supported the Clean Cars ActWorked to require all new government buildings in MD be high performance	<ul style="list-style-type: none">Opposed a bill to create a grant program to promote renewables and energy efficiencyOpposed the Healthy Air Act for two years and only signed it when it was passed with a veto proof majorityOpposed passage of the Clean Cars Act in 2005Under Ehrlich, the Maryland State Police spied on the Chesapeake Climate Action Network, with no evidence of criminal activity.

Environment Wins in Maryland Primary

(continued from page 1)

<http://maryland.sierraclub.org> and click on “politics and elections,” then click on “primary results” under “2010 endorsements.” To highlight our endorsements on your very own ballot, go to <http://maryland.evoter.com>. Simply enter your address, and select “Sierra Club Maryland Chapter” from the drop-down list in the “show endorsements by” box.

The general election on November

2 is still ahead, and the outcome of that election will have a profound impact on the environment. We need your help! Even if you can only work for two hours, please call Betsy Johnson at 301-656-4948 or send an email to betsy_johnson@comcast.net. ■

Betsy Johnson is the political chair of the Maryland Chapter; Alana Wase is the chapter's conservation coordinator.

Club Endorses Win in Anne Arundel; Two More Candidates Get Club Nod

By David Prosten—Every Anne Arundel Sierra Club endorsee emerged a winner in primary election voting September 14, and the razor-thin margin of victory in a key race—for the county council District 6 seat, which includes the Annapolis area—made clear the power of Sierra Club campaigning and votes.

Chris Trumbauer, the West/Rhode Riverkeeper, won the Democratic nomination for the council seat by 46 votes out of more than 6,000 cast. Sierra Club members went door to door for him, made phone calls, waved signs at intersections, and contributed money to his campaign. The Club has 1,400 members in the county.

The Club made two more endorsements after the primary results determined the final contests in the November 2 election. The executive committee voted unanimously to endorse Democrat **Torrey Jacobsen**, longtime Crofton community activist and advocate for sensible land use, for the District 7 seat.

In a state delegate contest, the Club endorsed newcomer **Jeremiah Chiappelli**, a Democrat, in legislative District 31. During the summer's interview process Chiappelli had impressed the Anne Arundel Group's political committee with his commitment to the environment.

The Club had earlier endorsed Re-

publican Steve Schuh for another of the three District 31 seats.

With these two new endorsements, this is the lineup of endorsed candidates in the county:

For Anne Arundel County Council

District 4: **Jamie Benoit**

District 6: **Chris Trumbauer**

District 7: **Torrey Jacobsen**

For Maryland State Legislature

District 21: **Ben Barnes, Barbara Frush and Joseline Pena-Melnyk**, delegates; **Jim Rosapepe**, senate.

District 30: **Mike Busch, Virginia Clagett and Judd Legum**, delegates

District 31: **Jeremiah Chiappelli and Steve Schuh**, delegates

District 32: **Pam Beidle and Ted Sophocleus**, delegates

The group does not automatically endorse in every race. To win an endorsement a candidate must garner the votes of at least two-thirds of the group's political committee and then at last two-thirds of the executive committee. The endorsement must then win the approval of the Maryland Chapter's executive committee. ■

David Prosten chairs the Anne Arundel Group.

Victory in Carroll County; A Challenge in Frederick

By Gregor Becker—What makes me claim victory in Carroll County when two of our candidates lost, leaving two endorsed Democrats in tough fights with Republicans? All but one primary winner oppose the incinerator! This suggests that four of five of the new commissioners will be opposed to the incinerator. We won the moral high ground: fiscal conservatism, taking responsibility, and family values—conserve, recycle, and breathe clean air. When Carroll pulls out, will Frederick County build alone?

We endorsed a conservative Republican CPA in District 1 (Manchester-Taneytown), and an incumbent incinerator opponent in District 2 (Hampstead-Finksburg), both of whom lost badly. We had responses from three hard-right Republican winners, two of whom sought our endorsement. This produced good dialog but resulted in no endorsement as neither believe in global warming. Both won their contests. This primary election had low voter turnout that gave conservative Republicans the edge. Of the 31% of registered voters casting primary ballots, winners needed only about 40% to win.

In Carroll County two of our endorsees survive, Democrats **Hugh McLaurin**, District 5, (Eldersburg-Sykesville), and **Michele Johnson**, District 4 (Mt Airy-New Windsor). While they'll have a difficult time against Republican opposition, the debate on incineration is largely over in this county.

But don't be too giddy with the results. A former Lehigh manager at the cement kiln in Union Bridge won big in District 3 (Westminster), while the tea party Republican who opposed the incinerator lost. Will he be the new board president, and set the agenda? We need to reinforce incinerator opposition. The three largest air pollution sources of the neu-

rotoxin mercury are coal-fired electrical plants, cement kilns and incinerators. Do we need an incinerator for our complete set? Isn't health a family value?

A new \$600 million incinerator built with a capacity beyond the two counties' needs will be a regional trash magnet. Does this mean we'll need more residential growth to feed a hungry incinerator?

Frederick County Commission

In Frederick County, all Republican winners supported the oversized incinerator, signaling a clear divide between pro-growth incinerator candidates and slow-growth advocates. That leaves our endorsed candidates, Democrats **Kai Hagen, Ellis Burruss, Janice Wiles**, and **Linda Norris**, lining up to advocate for sensible growth against go-growth, and for fiscal responsibility against throwing money at the problem to try to make it go away. Republican challenger Elaine Kessinger did not prevail in the primary but will mount a write-in campaign. That will be a difficult challenge, but at least one Republican will speak for sensible growth and help shape the debate.

The battle over the incinerator is not just local to Carroll and Frederick Counties. The pro-incinerator front group, the Northeast Maryland Waste Disposal Authority, is an independent state agency. They suggested only one option for solid waste disposal, incineration.

There are only 89 incinerators in this country (down from 122), so obviously other communities have other solutions. Why do we want to build the first new US incinerator in 15 years? An incinerator option, while expensive, is rather like a 30-year second mortgage for every homeowner with potential trigger clauses.

Maryland General Assembly

For MD delegate in District 3B we

(continued on page 7)

Election 2010: Group Political News



Explore, enjoy and protect the planet

All Creatures Great and Small



“Every good thing, great and small, needs defense”

- John Muir

Join Sierra Club and help protect all creatures, great and small.

Name _____
Address _____
City _____ State _____
Zip _____ Phone (____) _____
Email _____

Join today and receive
a FREE Sierra Club
Weekender Bag!



☐ Check enclosed. Please make payable to Sierra Club.
Please charge my: ☐ Visa ☐ Mastercard ☐ AMEX
Cardholder Name _____
Card Number _____
Exp. Date ____/____/____
Signature _____

Membership Categories	Individual	Joint
Special Offer	<input type="checkbox"/> \$15	
Standard	<input type="checkbox"/> \$39	<input type="checkbox"/> \$49
Supporting	<input type="checkbox"/> \$75	<input type="checkbox"/> \$100
Contributing	<input type="checkbox"/> \$150	<input type="checkbox"/> \$175
Life	<input type="checkbox"/> \$1000	<input type="checkbox"/> \$1250
Senior	<input type="checkbox"/> \$25	<input type="checkbox"/> \$35
Student/Limited Income	<input type="checkbox"/> \$25	<input type="checkbox"/> \$35

Contributions, gifts and dues to Sierra Club are not tax deductible; they support our effective, citizen-based advocacy and lobbying efforts. Your dues include \$7.50 for a subscription to *Sierra* magazine and \$1 for your Chapter newsletters.

Enclose a check and mail to Sierra Club,
P.O. Box 421041, Palm Coast, FL 32142-1041

or visit our website www.sierraclub.org

F94Q W 1

Victory in Carroll County; A Challenge in Frederick

(continued from page 6)

proudly endorse Democrat **Paul Gilligan**, who opposes the incinerator. His opponent, Michael Hough, defeated incinerator proponent, former commissioner Charles Jenkins. In District 3A we have endorsed 3A incumbent **Galen Clagett**, an incinerator proponent but a proven friend on other environmental issues. Former commissioner Lenny Thompson, another incinerator proponent lost in the district 4A primary. ■

Gregor Becker is the political chair for the Catoctin Group.

Smarter Growth Takes a BIG Step Forward in Charles County Primary

By **Bonnie Bick**—Charles County voters sent a message that they are tired of the “business as usual” development policies of the county commissioner incumbents. All but one of the incumbent commissioner candidates were voted out of office in the September primary.

The Southern MD Group sent out eight thousand mailers heralding the importance of smart growth and supporting our endorsed candidates. We also handed out thousands of flyers, keeping our message clear in support of a new direction for Charles County. We promoted the best of both worlds through true smart growth, by protecting our valuable wetlands, streams, forests, and farms while revitalizing our existing urban areas to make them more desirable places to live and work.

In the primary, four of the five candidates we endorsed won: **Candice Kelly**, District 1 commissioner; **Ken Robinson**, District 1 commissioner; **Peter Murphy**, (incumbent) state delegate; and **C.T. Wilson**, state delegate.

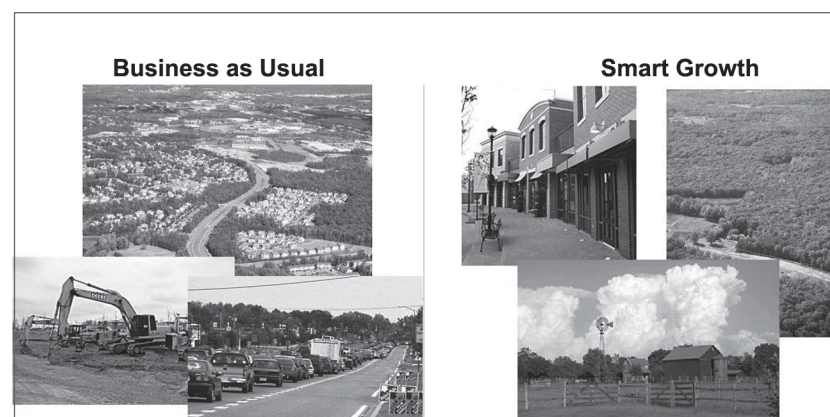
The Montgomery County Group Says Thanks!

By **Susan Eisendrath**—A big THANK YOU to all who volunteered and worked on the election in support of the candidates the Sierra Club endorsed! And a big THANK YOU to all of you who voted for our endorsed candidates! In preparation for this election the Montgomery County Group and its political committee put a lot of time and effort into interviewing candidates, making endorsements, and promoting endorsed candidates, and the work paid off. We’re proud that the majority of the candidates whom we endorsed won. We’re particularly pleased that during this election we worked with a variety of mailing and telephone efforts on behalf of our candidates, and we know that it helped in races like Karen Montgomery’s and Bonnie

Cullison’s.

We also greatly appreciate the candidates who earned our endorsement, but were not successful in the primary. We encourage people to step up and take on the challenge of fighting for our key environmental issues by running for office. And we encourage all of our members to keep up the good work and make sure you make your voice heard by voting for all of the Sierra Club endorsed general election candidates! Please check out our website (<http://maryland.sierraclub.org/montgomery/>) for updates and additional information on elections and our other activities. ■

Susan Eisendrath serves on the Montgomery County Group’s excom.



A New Direction for Charles County?

Charles County is losing forest to development at a rate faster than most counties in Maryland. The loss is concentrated in the Mattawoman watershed, which is smothered by a “development district” larger than Washington, D.C. This antithesis of smart growth was embraced by the incumbent board of commissioners, and has brought Mattawoman Creek from being Maryland’s most productive fish nursery in the Chesapeake Bay system to the brink of serious decline, according to data from the state fisheries service. And yet the in-

cumbent commissioners weren’t satisfied. They enthusiastically pushed to open more areas to development by proposing to extend their Cross County Connector across the Mattawoman watershed, ignoring attractive alternatives. The Maryland Sierra Club has adopted Mattawoman as a priority campaign, and the success in the primary election has helped make a first important step in changing the political climate. (Please see report “Trouble Ahead” at the Mattawoman section of the

(continued on page 8)

Election 2010 : Group Political News & How to Help Elect Your Candidates

Smarter Growth Takes a BIG Step Forward in Charles County Primary



Egrets at home at Mattawoman Creek. Photo by Jim Long.

(continued from page 7)

MD Chapter web site, <http://maryland.sierraclub.org/action/p0052.asp>)

However, our work is not done. In the general election on November 2, there are candidates who continue to promote policies that favor the development industry over our environment and quality of life. Fortunately, the election presents a remarkable opportunity because of the unusual number of thoughtful candidates

who are running.

This chance comes just in time for Mattawoman Creek, and the Chesapeake Bay. We are counting on our electoral effort to tip the balance at the local level in order to tip the balance for Mattawoman, suffering from the loss of forest and urbanization and now teetering on brink of serious decline. ■

Bonnie Bick chairs the Mattawoman campaign for the Maryland Chapter.

What You Can Do NOW to Elect Candidates Who Share Your Environmental Concerns

The quick answer to "What can I do?" is simple. You, as a citizen, are free to support your candidate as you see fit. To comply with election law, be sure to use your own resources, such as telephone, desk, e-mail, or computer, not those of your employer or the Sierra Club.

1. Make sure you are registered to vote.

Is your registration up-to-date and accurate, reflecting your current address? Make sure it is correct.

Tuesday, October 12, is the last day to register for the 2010 general election. Contact your county voter registration office if you have any questions about your registration. (For information on voter registration, see www.elections.state.md.us/voter_registration/index.html)

2. Help others register to vote.

Encourage and urge your friends, family members, neighbors and co-workers to register to vote. Call your local elections office and find out exactly who can register voters or what the process is, and share that information. The easier you make the process, the more likely it is that others will register.

3. Urge others to vote for the candidates endorsed by the Maryland Chapter.

Encourage friends, family members, neighbors and co-workers to vote for candidates who care about the environment in Maryland. Tell them about the candidates the Sierra Club has endorsed, and explain why. Keep it legal by using your own personal e-mail lists, computer, telephone, stamps, paper, envelopes, etc., not those belonging to your employer or

the Sierra Club.

4. Speak out publicly.

You can support candidates with good environmental records, and/or criticize those who don't by writing a letter to the editor of your local paper or calling a talk show.

5. Make a contribution to candidates' campaigns.

Your contributions will help the candidates get their message out to other voters.

6. Volunteer to work with a campaign.

Volunteers have the opportunity to do valuable work, such as working at the local campaign headquarters, organizing or participating in campaign events, contacting voters door-to-door, or helping with campaign phone banking.

7. Organize a group to work for the campaign.

Get a group of friends, neighbors and fellow activists together to work for the campaign. Again, use your own resources!

8. Post a campaign sign.

Post a sign in your yard or window, and affix a bumper sticker to your car. Encourage your friends to do the same.

9. Publicize campaign events

Talk about and spread the word on any campaign event. Remember to use personal resources to do so.

10. Speak in favor of your candidate at a campaign event.

Let listeners know why you are

(continued on page 9)



Explore, enjoy and protect the planet

SUPPORT YOUR LOCAL SIERRA CLUB

We send out an appeal in March to each of our members, asking for contributions directly to our Chapter. These contributions really do make a difference to us, and are an important part of our Chapter's budget.

When you make a donation to the Chapter, you support the Sierra Club's work in your own backyard. You allow us to continue our work to protect wilderness and wildlife, to improve the quality of life in our cities, and to promote the enjoyment of nature.

Please be as generous as you are able - and remember, these funds directly affect your way of life in your neighborhood.

Make your contribution to
Maryland Chapter, Sierra Club
7338 Baltimore Ave., Suite 111
College Park, MD 20740

Thanks so much!

Election 2010: Who Gets Our Endorsement

Elect Candidates Who Share Your Environmental Concerns

(continued from page 8)

supporting the candidate's campaign.

11. Walk and talk.

Call on your neighbors door-to-door to tell them why you are supporting your candidate. Again, you must use your personal resources, not those of your employer or the Sierra Club. Check with the campaign headquarters of your candidate for information.

12. Get out the vote.

Volunteer to assist with get-out-the-vote, absentee, or early ballot efforts.

13. Vote! Vote! Vote!

This is what all the other steps are about. Vote absentee or use an early ballot if you aren't sure you will be able to make it to the polls on election day. Every vote is important! Remind your family, friends, and neighbors to vote, too. ■

“**Never doubt that a small group of thoughtful, committed citizens can change the world. Indeed, it's the only thing that ever has.**”

—Margaret Mead

Who Gets Our Endorsement?

By Betsy Johnson—The Sierra Club has a well-defined political program with rules for making endorsements. Many of our members don't understand our endorsement policy, and I often get angry calls when we endorse a candidate they don't like. But the policy makes sense, and I would like to outline it for you briefly:

- ♦ We are a non-partisan organization. We can endorse viable candidates from any party if they support us on our issues.

- ♦ Incumbency matters. Incumbents who heed requests to vote for our agenda usually get our endorsement. They have proved that we can rely on them to help get our agenda through, and we reward those actions with an endorsement even if a challenger

has a better environmental platform. We do this in order to send a consistent message to elected officials that if they work for our issues, we will support them.

- ♦ Viability matters. Challengers need to prove that they have the campaign structure and enough money to mount a credible campaign. Such a candidate may not be the person who has the best talking points on the environment. Our goal is to get good people elected to office, not to fall on our swords in support of an idealistic message.

- ♦ Political landscape matters. We strive to get the best person elected that we can get in a particular district. That may mean we endorse someone who does not have stellar environmental credentials, but who is still the best of the bunch.

There are always exceptions, but for the most part we follow those rules very closely. Our endorsement process includes having the candidates fill out a questionnaire and submit to an interview

housekeeping seal of approval” for the environmental community when it comes to elections, and our endorsement is sought by many candidates in Maryland. But the endorsement is only the first step. Its effectiveness depends, in large part, on the actions of our members. We need you to be involved in the political process!

We also know that there are Sierra Club members who don't vote. Your vote is very important, and we have enough members to swing a close election. Many

racers are decided in the primary—so it's important to vote in both primary and general elections.

If you will not be here on election day, you can vote early, or request an absentee ballot. See “Away on Election Day?” on page 10 for more information. Don't let travel keep you from voting!

This election year is filled

with dangers and opportunities. Many who have stepped down from their elected positions have been good environmental supporters. We must not let those seats go to our opponents. We need the Sierra Club presence to be felt out there. If you would like to get involved, please call me at 301-656-4948. Rest assured that we will find something for you to do. ■

Much of the Sierra Club's influence with legislators at all levels of government is derived from its political program. Legislators listen to us because they know that our endorsements tend to swing lots of voters. We are considered the “good

Reprinted from Chesapeake, Summer 2006 Edition. Betsy Johnson is a member of the Maryland Chapter excom and chairs the chapter's political committee.



Election 2010: Maryland Chapter Endorsed Candidates

Federal Endorsements

Senate and House

US Senate	Barbara Mikulski
Congressional District 1	Frank Kratovil
Congressional District 2	Dutch Ruppersberger
Congressional District 3	John Sarbanes
Congressional District 4	Donna Edwards
Congressional District 5	Steny Hoyer
Congressional District 6	No Endorsement
Congressional District 7	Elijah Cummings
Congressional District 8	Chris Van Hollen

Away on Election Day? Vote Early, or Cast an Absentee Ballot!

Maryland voters can vote early for both primary and general elections. For the general election, early voting centers will be open starting Friday October 22, 2010 through Thursday, October 28, 2010, except for Sunday, October 24th when early voting centers are closed.

Early voting centers will be open from 10 am until 8 pm each day of early voting. Anyone in line at 8 pm will be allowed to vote. The early voting sites are listed on the web at: www.elections.state.md.us/voting/early_voting.html

If you wish to vote via absentee ballot, the deadline for a request for an absentee ballot for the general election is Tuesday, October 26, 2010. Your request must be received by 8:00 pm if you mail or deliver the application or 11:59 pm if you fax or email it. For more information, check the state's website: www.elections.state.md.us/voting/absentee.html

State and Local Endorsements

State of Maryland

GOVERNOR	Martin O'Malley
ATTORNEY GENERAL	Doug Gansler
COMPTROLLER	Peter Franchot

Anne Arundel

Office	Dist	Candidate
DELEGATE	30	Mike Busch
DELEGATE	30	Virginia Claggett
DELEGATE	30	Judd Legum
DELEGATE	31	Steve Schuh
DELEGATE	31	Jeremiah Chiappelli
DELEGATE	32	Pam Beidle
DELEGATE	32	Ted Sophocleus

COUNTY CNCIL	4	Jamie Benoit
COUNTY CNCIL	6	Chris Trumbauer
COUNTY CNCIL	7	Torrey Jacobson

Baltimore County

Office	Dist	Candidate
DELEGATE	6	John Olszewski
DELEGATE	8	Eric Bromwell
DELEGATE	10	Emmett Burns
DELEGATE	10	Adrienne Jones
DELEGATE	10	Shirley Nathan-Pulliam
SENATOR	11	Bobby Zirkin
DELEGATE	11	Jon Cardin
DELEGATE	11	Dan Morhaim
DELEGATE	11	Dana Stein
DELEGATE	12A	Steven DeBoy
DELEGATE	12A	James Malone
SENATOR	42	Jim Brochin
DELEGATE	42	Lori Albin
DELEGATE	42	Steve Lafferty

COUNTY EXECUTIVE	Kevin Kamenetz
COUNTY CNCIL	2 Vicki Almond
COUNTY CNCIL	5 Mike Ertel

Baltimore City

Office	Dist	Candidate
SENATOR	40	Catherine Pugh
DELEGATE	40	Frank Conaway
DELEGATE	40	Barbara Robinson
DELEGATE	40	Shawn Tarrant
SENATOR	41	Lisa Gladden
DELEGATE	41	Jill Carter
DELEGATE	41	Sandy Rosenberg
SENATOR	43	Joan Carter Conway
DELEGATE	43	Curt Anderson
DELEGATE	43	Maggie McIntosh
DELEGATE	43	Mary Washington
SENATOR	44	Verna Jones
DELEGATE	44	Keith Haynes
DELEGATE	44	Melvin Stukes
DELEGATE	45	Cheryl Glenn
SENATOR	46	Bill Ferguson
DELEGATE	46	Peter Hammen
DELEGATE	46	Brian McHale
DELEGATE	46	Luke Clippinger

Carroll County

Office	Dist	Candidate
COUNTY COMM	4	Michele Johnson
COUNTY COMM	5	Hugh McLaurin

Charles County

Office	Dist	Candidate
DELEGATE	28	Peter Murphy
DELEGATE	28	C.T. Wilson

COMMISSIONER PRESIDENT

COUNTY COMM	1	Candice Quinn Kelly
COUNTY COMM	2	Ken Robinson
COUNTY COMM	3	Rick Campbell
COUNTY COMM	4	Eric Vrem
COUNTY COMM	4	Don Derencin

Frederick County

Office	Dist	Candidate
DELEGATE	3A	Galen Claggett
DELEGATE	3B	Paul Gilligan

COUNTY COMM	At-large	Ellis Burruss
COUNTY COMM	At-large	Kai Hagen
COUNTY COMM	At-large	Linda Norris
COUNTY COMM	At-large	Janice Wiles

Election 2010: Maryland Chapter Endorsed Candidates

Harford
Office **Dist** **Candidate**
DELEGATE 34A Mary Dulaney James

COUNTY CNCIL A Dion Guthrie
COUNTY CNCIL F Mary Ann Lisanti

Howard
Office **Dist** **Candidate**
DELEGATE 9A Maryann Maher
DELEGATE 9A Jonathan Weinstein
DELEGATE 12B Liz Bobo
SENATOR 13 James Robey
DELEGATE 13 Frank Turner
DELEGATE 13 Guy Guzzone
DELEGATE 13 Shane Pendergrass

COUNTY EXEC Ken Ulman
COUNTY CNCIL 1 Courtney Watson
COUNTY CNCIL 2 Calvin Ball
COUNTY CNCIL 3 Jennifer Terrasa
COUNTY CNCIL 4 Zee Beams
COUNTY CNCIL 5 No Endorsement

Montgomery
Office **Dist** **Candidate**
SENATOR 14 Karen Montgomery
DELEGATE 14 Anne Kaiser
DELEGATE 14 Eric Luedtke
DELEGATE 14 Craig Zucker
SENATOR 15 Rob Garagiola
DELEGATE 15 Brian Feldman
DELEGATE 15 Kathleen Dumais
DELEGATE 15 Aruna Miller
SENATOR 16 Brian Frosh
DELEGATE 16 Bill Frick
DELEGATE 16 Susan Lee
DELEGATE 16 Ariana Kelly
SENATOR 17 Jennie Forehand
DELEGATE 17 Kumar Barve
DELEGATE 17 Jim Gilchrist
DELEGATE 17 Luiz Simmons
DELEGATE 18 Al Carr
DELEGATE 18 Ana Sol Gutierrez
DELEGATE 18 Jeff Waldstreicher
SENATOR 19 Roger Manno
DELEGATE 19 Sam Arora
DELEGATE 19 Bonnie Cullison
SENATOR 20 Jamie Raskin

Montgomery (continued)
Office **Dist** **Candidate**
DELEGATE 20 Sheila Hixson
DELEGATE 20 Tom Hucker
DELEGATE 20 Heather Mizeur
DELEGATE 39 Charles Barkley
DELEGATE 39 Kirill Resnik
DELEGATE 39 Shane Robinson

COUNTY EXEC Ike Leggett
COUNTY CNCIL At-large Marc Elrich
COUNTY CNCIL At-large George Leventhal
COUNTY CNCIL At-large Hans Reimer
COUNTY CNCIL 1 Roger Berliner
COUNTY CNCIL 2 Craig Rice
COUNTY CNCIL 3 Phil Andrews
COUNTY CNCIL 4 Nancy Navarro
COUNTY CNCIL 5 Valerie Ervin

Prince George's
(Check website)
Office **Dist** **Candidate**
SENATOR 21 Jim Rosapepe
DELEGATE 21 Barbara Frush
DELEGATE 21 Ben Barnes
DELEGATE 21 Joseline Pena-Melnyk
SENATOR 22 Paul Pinsky
DELEGATE 22 Anne Healey
DELEGATE 23A Jim Hubbard
DELEGATE 47 Doyle Neimann

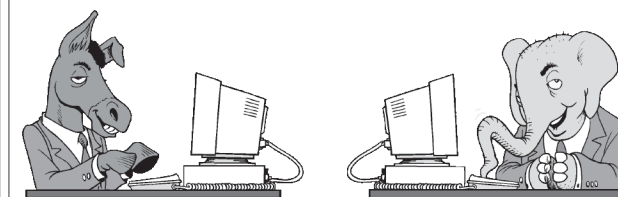
COUNTY CNCIL Dist 1 Mary Lehman
COUNTY CNCIL Dist 3 Eric Olson
COUNTY CNCIL Dist 8 Obie Patterson
COUNTY CNCIL Dist 9 Mel Franklin

There's More!

As this issue of *Chesapeake* goes to press in early October, the political committees for the chapter and the groups are still working to get to know candidates and identify those who merit endorsement.

So you'll find more political information and endorsements for state and local offices on the Maryland Chapter website: <http://maryland.sierraclub.org>
Click on the link for politics and elections

For endorsements for federal offices, see www.sierraclub.org/politics/endorsements



Check Chapter website for more endorsements:

<http://maryland.sierraclub.org>
click on "Politics and Elections"

If YOU don't vote for candidates who care about the environment, who do you think will?

Vote in the general election.
Tuesday, November 2.



Election 2010: How to Help Your Candidates



Select a current topic. Newspapers rarely publish letters about topics that are not being covered in the news. Referring to a previously published article or column will increase your letter's chances of being published.

Research the guide-

lines. Most papers limit the length of letters to the editor to 250 words. Stick to your newspaper's word limit so that an editor does not cut the important points of your letter. Some papers require that all letters be typed; others will only accept e-mail. Often newspapers want your address and phone number so they can verify that you wrote the letter. You can usually find a paper's guidelines on the "letters" page. If not, call the paper directly or visit its web site.

Assume nothing. Do not assume that your readers are informed on your topic. Give a concise but informative background before plunging into the main issue. Refer to any newspaper article or editorial by date and title. Also include any relevant credentials that prove you are informed about your topic.

Be brief. State your position succinctly without eliminating necessary detail. Keep your paragraphs short. Long rambling sentences and digressions will cause people to lose interest quickly. Stick to one subject.

Maintain composure. It is okay to ex-

press outrage, but it should be kept under control. Avoid personal attacks and focus instead on criticizing specific policies or ideas.

Find a local angle. Readers are more interested in an issue when they see how it affects their lives and communities. Find a way to show how environmental

policies will affect the paper's readers.

Avoid form letters. Do not send the same letter to two competing papers in the same circulation area. If you send the same letter to papers in different markets, each should look like an original and be signed individually. ■



Wondering who deserves your vote?

Check out **www.evoter.com**, a non-partisan election information website!

Enter your address and get your polling location and a sample ballot.

Select "Sierra Club Maryland Chapter" from the list of endorsing organizations to see which local candidates have been endorsed by our chapter!

Maryland Chapter Leadership Opportunities



Explore, enjoy and protect the planet



VOLUNTEER with US!

Sierra Club offers many different types of volunteer opportunities for anyone looking to become more involved in helping to protect the planet. By volunteering, you will be given the exciting opportunity to contribute to the betterment of our world and our future. So get active, meet new people, and have some fun!

Name _____

Address _____

City _____ State _____

Zip _____ Country _____

Home Phone (____) _____

Work Phone (____) _____

Fax (____) _____

Email _____

Please select the activities that interest you.

- ☐ Attend and/or Testify at a Hearing
- ☐ Door Hanger/Literature Delivery
- ☐ Fundraising
- ☐ Ground Truthing/Forest or Timber Sale Monitoring
- ☐ Host Club Leaders Visiting My Area
- ☐ Lead an Outdoor Activity or Inner City Outing
- ☐ Perform Legal Services
- ☐ Phone Calling
- ☐ Media Relations
- ☐ Signature Gathering
- ☐ Work at Club Booths at Fairs and Events
- ☐ Use My Vehicle to Transport People and Supplies
- ☐ Work in the Club office
- ☐ Work at a Mailing Party
- ☐ Trail Maintenance, Tree Planting or Other Outdoor Activity
- ☐ Volunteer Coordination
- ☐ Work on the Web Site
- ☐ Write Letters

Please list your top three conservation issues:

- 1) _____
- 2) _____
- 3) _____

Please send form to:

Sierra Club, Maryland Chapter
7338 Baltimore Avenue, #111
College Park, MD 20740

Call for Nominations for Chapter and Group Excoms

Since 1892, the Sierra Club has been working to protect communities, wild places, and the planet itself. We are the oldest, largest, and most influential grassroots environmental organization in the United States. You are a member because, like 1.3 million of your friends and fellow citizens, you want a safe and healthy community in which to live, smart energy solutions to combat global warming, and an enduring commitment to America's parks and wild places.

We are a democratic organization, which elects its leaders at the national and local level, giving our members many opportunities to serve and to lead others in the work, and the play, of exploring, enjoying, and protecting our planet.

We are looking for people with management skills, a commitment to the environment, and a willingness to invest their time and energy for the next two years to help manage the chapter or our local groups.

If you've been thinking that it is time for you to do more to express your commitment to the restoration and preservation of a healthy environment here in Maryland, here is an opportunity for you to do so.

Each year, the Maryland Chapter holds elections for "At Large" delegates to the chapter executive committee. This winter, the members of the chapter will elect three people to serve two-year terms on the committee. The chapter's nominating committee invites all interested members of the Maryland Chapter to enter the race for these positions. We are looking for at least six people who can bring management skills, a firm commitment to protecting the environment, and a willingness to invest their time and energy for the next two years to help manage the chapter.

While experience on a group's executive committee would be helpful, it is not necessary. Your work and life experience, and your common sense, are equally important ingredients. If you

would be willing to serve for a two-year term, please submit a brief biography, no longer than 400 words, which describes your qualifications, your experience, and what you believe you can contribute. You may also nominate another member in good standing.

Send your nomination to the Nominating Committee; by mail c/o Laurel Imlay, 7338 Baltimore Ave, Suite 111, College Park, MD 20740; by e-mail to laurel.imlay@sierraclub.org; or by fax to 301-277-6699.

Please respond by October 30, 2010. The nominating committee will review the qualifications described in the biographies, attempt to bring forward a slate of six candidates, and report the slate of

candidates to the executive committee. The candidates' statements and a ballot will be published in the winter issue of *Chesapeake*.

For additional information and a sample biography, please contact Laurel Imlay at the above address, or call 301-277-7111.

This year we are soliciting candidates for group executive committees as well. The Maryland Chapter is made up of nine groups that work at the local (county or regional) level. The requirements for a group executive committee member are the same as those described above for the chapter executive committee members. Serving on the executive committee of your local group is a rewarding and exciting experience. We need committed, responsible environmentally aware people to represent us at all levels of government and to make good decisions for our state and local entities.

If you would like to explore this opportunity, please contact your group's chair before October 30, 2010. Here are

the contact numbers and areas of jurisdiction for our nine groups:

Anne Arundel

David Prosten, 410-703-0847
dprosten@yahoo.com

Greater Baltimore (Baltimore City, Baltimore County, and Harford County)

Paul Schoen 410-667-4889
paul@peschoen.com

Catoctin (Carroll, Frederick, and Washington Counties)

Dan Andrews 410-857-4129
dooze@qis.net

Eastern Shore (all counties east of the Chesapeake Bay and Cecil County)

Don Grace 410-352-3722
don.grace@mdsierra.org

Howard

Ken Clark 301-725-3306
kenclark7@comcast.net

Montgomery

David Hauck 301-270-5826
hauck_d@msn.com

Prince George's

Chip Reilly 301-218-3920
chip.reilly@mdsierra.org

Southern Maryland (Calvert, Charles, and St. Mary's Counties)

Frank Fox 301-884-8027
ff725@yahoo.com

Western Maryland (Allegany, Garrett, and Washington Counties)

Sam White 301-264-4162
sam@cedarrockfarm.org

You may also contact Laurel Imlay at laurel.imlay@sierraclub.org or call 301-277-7111 if you have trouble reaching your group chair. ■

Maryland Chapter Leaders

Executive Committee

Ron Henry, Chapter Chair, At-Large Del. (2009)

443-474-7449
Ron.Henry@mdsierra.org

David O'Leary, Vice Chair, At-Large Del. (2010)
dave.oleary@mdsierra.org

Erin Barnes, At-Large Del. (2009)
202-236-0145
ebarnesjd@gmail.com

Brigitte Fortin, At-Large Del. (2010)
240-506-8976
brigitte.fortin@maryland.sierraclub.org

Betsy Johnson, At-Large Del. (2010)
301-656-4948
betsy.johnson@mdsierra.org

Baird Straughan, At-Large Del. (2009)
301-657-8121
baird.straughan@mdsierra.org

David Prosten, Anne Arundel Del.
dprosten@yahoo.com

Chris Yoder, Greater Baltimore Del.
410-466-2462
Chris.Yoder@mdsierra.org

Dan Andrews, Catocin Del.
410-857-4129
dooze@qjs.net

Don Grace, Eastern Shore Del.
don.grace@mdsierra.org

Kathleen Sheedy, Howard Del.
410-505-4528
Kathleen.Sheedy@Maryland.Sierraclub.org

Charles Reilly, Prince George's Del.
301-218-3920
Chip.reilly@mdsierra.org

David Hauck, Montgomery Del.
301-270-5826
David.hauck@Maryland.sierraclub.org

Marc Imlay, Southern MD Del.
301-283-0808
marc.imlay@maryland.sierraclub.org

Sam White, Western MD Del.
301-264-4162
sam.white@Maryland.Sierraclub.org

Issues Contacts

**David O'Leary
Conservation Chair**
dave.oleary@mdsierra.org

**Chris Yoder
Conservation Co-Chair,**
410-466-2462
Chris.Yoder@mdsierra.org

Sam White, Agriculture, CAFO, True Cost of Food (TCOF) Chair
301-264-4162,
sam.white@maryland.sierraclub.org

Charlie Garlow, Air Quality Chair
301-593-9823
charlie.garlow@juno.com

Marc Imlay, Biodiversity, ESA, Invasive Species, and Habitat Stewardship Chair
301-283-0808
marc.imlay@maryland.sierraclub.org

David O'Leary, Energy, Global Warming, Cool Cities Chair
dave.oleary@mdsierra.org

Bonnie Bick, Environmental Justice Chair, Mattawoman Campaign Chair
301-839-7403
bonnie.bick@maryland.sierraclub.org

Chris Yoder, National Wildmess/Refuges/ Mining Chair
410-466-2462
Chris.Yoder@mdsierra.org

Kim Birnbaum, Pesticides Chair
410-379-1075
Kim.Birnbaum@maryland.sierraclub.org

Cliff Terry, Population Chair
410-944-9477
cliff.terry@maryland.sierraclub.org

Sam B. Hopkins, Population Vice Chair
410-554-0006
sbh@hopkinsandassociates.com

Earl Bradley, Right Whale Chair
410-224-3236
earlbradley@verizon.net

Mark Diehl, State Forests Chair
mdiehl55@gmail.com
301-724-6238

Fred Tutman, Storm water Mgmt. Chair
301-249-8200 ext 7
fred@paxriverkeeper.org

Steve Caflisch, Transportation Chair
301-654-3288
steve.caflisch@maryland.sierraclub.org

Ed Merrifield, Water Quality Chair
202-222-0707
ed@potomacriverkeeper.org

Administrative Contacts

Cliff Terry, Campaign Finance Reform Chair
410-944-9477
cliff.terry@maryland.sierraclub.org

Baird Straughan, Fundraising Chair
301-657-8121
baird.straughan@mdsierra.org

David O'Leary, Legislative Chair
dave.oleary@mdsierra.org

Brigitte Fortin, Membership Chair
240-506-8976
brigitte.fortin@maryland.sierraclub.org

Jan Hoffmaster, Outings Committee Chair
Jan.Hoffmaster@mdsierra.org

Mike Pretl, PAC Treasurer
mikepretl@aol.com

Betsy Johnson, Political Chair, Council Del.
301-656-4948
betsy.johnson@mdsierra.org

Charlie Garlow, Political Compliance Officer,
charlie.garlow@juno.com

Clay Birkett and Steve Lonker, Postmasters
postmaster@maryland.sierraclub.org

Baird Straughan, Trainings Chair
301-657-8121
baird.straughan@mdsierra.org

Lauren Burgess, Treasurer
Chapter.Treasurer@Maryland.Sierraclub.org

Rick Andrews, Webmaster
andrews4art@yahoo.com

Activity Sections Contacts

Kathy Harget, Baltimore Young Sierrans
410-440-9896
youngsierrans@gmail.com

**Bob Burchard & Nicole Veltre
BICO Chairs**
baltimoreinnercityoutings@gmail.com

**Chapter Staff
Laurel Imlay, Chapter Coordinator**
laurel.imlay@sierraclub.org
301-277-7111

Alana Wase, Conservation Coordinator
Alana.Wase@sierraclub.org
301-277-7111

Office: 7338 Baltimore Avenue, #111
College Park, MD 20740
Tel: 301-277-7111, Fax: 301-277-6699
<http://maryland.sierraclub.org>

Voting is the
first duty
of
democracy.

—Lyndon B. Johnson

Outings (October)

Outings to Explore, Enjoy, and Protect the Planet

Sierra Club outings are open to everyone, members and non-members alike. Each outing is intended to be a wholesome, safe, and enjoyable experience in the outdoors. Participants must have proper clothing, equipment, and stamina suitable to the event, and are encouraged to select activities that match their individual abilities for outdoor adventures.

The Club offers a variety of outings from “easy” to “strenuous” that suit all activity levels. The difficulty of each outing is clearly designated in the announcement. Reservations are generally not required for a local outing unless noted, but the outing leader should be contacted in advance for questions about the terrain, the difficulty or duration of the trip, recommended clothing, footwear and equipment.

Activities are normally held “rain or shine,” but may be postponed at the leader’s discretion for safety reasons in the event of inclement weather. Potential participants are reminded that all outdoor activities carry a degree of risk, and some take place in locations where professional emergency medical aid may be two or more hours away. People with health concerns should consult a physician to determine the advisability of participating in these or similar activities. The Club outing leader is responsible for the safety of all participants, and has the final authority to decide whether or not an individual may participate on a specific outing. Sierra Club safety policy requires that helmets be worn on bicycling outings. Also, any participant must wear a personal flotation device (PFD) on outings using personal watercraft such as kayaks or canoes.

Unless noted in the announcement, Club outings are intended for adults. Children and dogs are not normally permitted, unless an outing is so designated. Even on outings that are designated as child/dog friendly, please contact the leader in advance before bringing minors

or pets. Minors (under 18 years of age) must be accompanied by a parent or a legal guardian, or they must have both 1) a signed permission slip, and 2) the leader’s prior consent to participate in the Club outing. Dogs must be non-aggressive, well-behaved, and on a leash.

Sierra Club outings officially begin and end at the trailhead, paddlecraft put-in/take-out point, or some other similar designated locality near the activity. Travel to the official starting point and back, even from an advertised meeting place, is the sole responsibility of each participant. While the Club encourages car-pooling, such arrangements are strictly between the riders and the drivers, and are not a part of the outing. Participants assume full responsibility and liability for all risks associated with such travel.

All participants on Sierra Club outings are required to sign a standard liability waiver, which can be viewed on the web at <http://www.sierraclub.org/outings/chapter/forms/index.asp>. Sierra Club local outings are free of charge, although payment of park entrance fees, a share of campsite rental costs, permit fees, equipment rental charges, etc. may be required from the participants. Such costs are specified in the announcement whenever possible. The Sierra Club practices “leave-no-trace” trail techniques, including hiking and camping on durable surfaces, minimizing campfire impacts, packing out all trash, respecting wildlife, being considerate of other visitors, and leaving the environment as it was found.

Take only pictures, leave only footprints, and have fun out there.

Abbreviations Used

Most outings in the Maryland Chapter are run at the group level, with a few chapter and inter-chapter events. The group originating the outing is identified in parentheses by the leader’s name. These and other abbreviations used are listed below:

- AA: Anne Arundel Group
- AMC: Appalachian Mountain Club
- AT: Appalachian Trail
- BLM: Bureau of Land Management
- CCA: Canoe Cruisers Association (Washington, D.C.)
- CG: Catocin Group
- C&O: Chesapeake and Ohio Canal
- FFA: Family Friendly Activity (kids/ dogs ok, but check with leader)
- FWS: (U.S.) Fish and Wildlife Svc.
- GB: Greater Baltimore Group
- GWNF: George Washington National Forest
- HC: Howard County Group
- JNF: Jefferson National Forest
- MNF: Monongahela National Forest
- MC: Montgomery County Group
- NPS: National Park Service
- NRA: National Recreation Area
- NWR: National Wildlife Refuge
- PFD: Personal Flotation Device (lifejacket)
- PRO: Sierra Club Potomac Region Outings (SCPRO)*
- SF: State Forest
- SM: Southern Maryland Group
- SP: State Park
- SNP: Shenandoah National Park

* For hike ratings of SCPRO, refer to their website at <http://www.sierrapotomac.org/rating.htm>

October

Sat.-Tue. Oct. 9 to 12 HC:Cooper’s Rock State Forest Car Camping, WV. The first hike will be an 8 mile circuit within the park to visit the Cheat River and a vista. The second hike is a 30 minute drive from camp. We will be hiking 12 miles in the beautiful Quebec Run Wild Area in PA. Campsite reservation is required. Pre-register with Mike Juskelis, 410-439-4964, mjuskelis@cablespeed.com.

Sun.Oct. 10 Mattawoman Creek Paddle Trip Experience a last best remnant of Maryland’s Chesapeake Bay, a tidal fresh water estuary teeming with eagles, herons, beaver, otters, bass and migratory fish, and American lotus. A new highway and development threaten this gem, a poster child for sprawl’s effects on the bay. 10 AM-1 PM Meet at dock at 108 Mattingly Ave, Indian Head, MD 20640. Bring own boat or rent on-site. Call to sign up 301-277-7111 check maryland.sierraclub.org

Sat. Oct. 16 Mattawoman Creek Paddle Trip Experience a last best remnant of Maryland’s Chesapeake Bay, a tidal fresh water estuary teeming with eagles, herons, beaver, otters, bass and migratory fish, and American lotus. A new highway and development threaten this gem, a poster child for sprawl’s effects on the bay. 2-5 PM Meet at dock at 108 Mattingly Ave, Indian Head, MD 20640. Bring own boat or rent on-site. Call to sign up 301-277-7111 check maryland.sierraclub.org

Sat. Oct. 16:Catocin Mountain Park, MD. Moderate 9 mile hike, visiting Cunningham Falls, Wolf Rock and Chimney Rock. Bring lunch and water. Meet at the Bagel Bin off Rt. 40 in the Enchanted Forest Shopping

Bad officials are elected by good citizens who do not vote.

~George Jean Nathan

continued➞

Outings (October)

←continued

Center, for an 9:00 departure. Or contact the leader to meet at the Catoctin Visitor Center. Call James Perschy, 410-964-1902, jameshike@verizon.net.

Sat. Oct. 16. Rated A (hike only). Waters of the American Chestnut Land Trust—and Flag Ponds Nature Park. Take a 4 mi. out-and-back, educational, and by-reservation-only canoe trip on Parkers Creek, the last remaining protected and undeveloped tributary on Chesapeake Bay's western shore. Then drive to Flag Ponds Nature Park, also in Calvert County, to take an easy 4 mi. hike to a lovely sandy beach on the bay. Call for boat reservations (\$10 donation requested; boat availability limited), and visit the SCPRO website (www.sierrapotomac.org) after Sep. 1 for details on when to be where to do either or both outings, plus driving options. Joint event with AMC/DC. Leader: Paul Elliott, 202/550-2841.

Sat. Oct. 16. Rated A/B. Virginia State Arboretum. (Conservation Hike) A 5-mile walk discovering trees from around the world, along with native trees, at the State Arboretum of Virginia. Wonderful meadows actually dominate, with their plant and bird life. etc. We carpool, as feasible, from our meeting place, 50 miles each way. Children and dogs bringing their parents are most welcome. Make sure to bring a picnic lunch. Meet at 9 am at Starbucks in Oakton Shopping Center, at 2930 Chain Bridge Rd., Oakton, VA. Leader: David Burd, dburd26@hotmail.com, or 703/998-9390.

Sat. Oct 16, Rated G. Catlett Mountain circuit. Moderate-to-fast paced 11 miles with 4700 elevation change. Spectacular fall foliage in the

Shenandoah. We will start at the lower Old Rag parking lot and do a circuit of Nicholson Hollow – Hannah Run – Catlett Mountain – Hazel Mountain – Hot-Short Mountain – Nicholson Hollow. There will be several stream crossings and we will see ruins along the way while ascending a steep climb. Meet at 8 am at the north side of Vienna Metro station. Beginners please contact the hike leaders. Leaders: Vicky Hsu, 301/275-6646 or hhueichi@gmail.com, and Mike Darzi, 301/580-9387 or michael.darzi@saic.

Sat. Oct. 16 GB – Moderate. Mingo Forks/Bunker Hill Circuit Hike 4 miles. This beautiful hike in Gunpowder Falls State Park should highlight the fall colors as it traverses the stream valleys and upland forests on the south side of the Big Gunpowder. Will discuss efforts to protect river quality. Meet at the Mt. Carmel Park & Ride just off of I-83 north of the Baltimore beltway at 1:00 PM. Cancelled for steady rain. For more details, call Alan at 443-212-5082 or email apenczek@stevenson.edu.

Sun. Oct. 17 GB – Moderate. Prettyboy Trail Hike (Dogs and older children are welcome) 6 miles along the shoreline and hillsides and through forests around Prettyboy Reservoir on the old Prettyboy Trail, walking a loop between George's Creek and the trail's start at Beckleysville Rd. The trail is maintained by neighbors, Boy Scouts, and the GB Sierra Club in collaboration with the Prettyboy Watershed Alliance and Mountain Club. Learn about this isolated trail and its wildlife and pristine drinking water for Baltimore. The trail is cleared to varying degrees and has some hills and minor stream crossings. Children under 18 must be able to hike this distance and be accompanied by a parent or other

responsible adult. Dogs must be friendly. Meet at 10:00 PM at the Mt. Carmel Rd. Park and Ride just west off I-83 north of the Baltimore Beltway and past the Shawan Rd. exit. For more information, contact Mary at 410-239-4590 (home), 443-386-0862 (cell), or email at XxDiTz4LyFxX@aol.com.

Sun. Oct. 17. Rated C. Northern Rock Creek Park. (Conservation Hike) Mid-day, primarily circuit hike of the north part of Rock Creek Park in Washington DC (but starting in Maryland) of about 7 mi. and 1600 ft. elevation change. We'll visit several landmarks, including Civil War fortifications and a poetic cabin, and surround ourselves with DC's best fall colors. We'll also discuss—and observe—the urban creek's environmental stresses in the more than 100-year history of the park. Meet at 10:30 am at the Meadowbrook/Rock Creek Local Park activity building (7901 Meadowbrook Lane, Chevy Chase, MD; for directions, see www.mc-mncppc.org/permits/facility/rec_bldgs/meadowbrook.shtm). Bring bag brunch. Leader: Mike Darzi, michael.darzi@saic.com, and Kris Unger, krisunger@gmail.com.

Sun. Oct 17. Not Rated. Fall General Meeting of Sierra Club Potomac Region Outings. This general business meeting of SCPRO will be held in the Meadowbrook/Rock Creek Local Park activity building from 2 to 6 pm. The meeting will feature discussions of issues and upcoming events, special presentations, and a pot-luck lunner (lunch/dinner). All SCPRO outings leaders, prospective leaders, participants of SCPRO outings, and other members of the public are invited. The activity building is along the Rock Creek Hiker/Biker Trail, and is about 2 miles each from Silver Spring and Bethesda Metro stations, and the



Explore, enjoy and protect the planet

Create an Environmental Legacy.



Bequests have played a key role in Sierra Club's environmental successes over the years.

Planning now may make your gift more meaningful and reduce taxes on your estate. We have many gift options available. We can even help you plan a gift for your local Chapter.

For more info and confidential assistance, contact:
Sierra Club
Gift Planning Program
85 Second Street, Second Floor
San Francisco, CA 94105
gift.planning@sierraclub.org • (800) 932-4270

Beltway; for directions, see www.mc-mncppc.org/permits/facility/rec_bldgs/meadowbrook.shtm. For Metro pick-up, or for other questions or details, contact Mike Darzi, Michael.Darzi@SAIC.com or 301/580-9387.

Tues. Oct 19. Rated F Old Ragged Mountain, Shenandoah National Park. Backpacker Magazine rated "Old Rag" as the 13th best day hike in the entire country. Problem-The crowds on autumn week-ends. Solution-Play hooky from work and join us for a scramble up the giant granite

continued →

Outings (October)

↩continued

boulders for breathtaking views of the valley in all of its spectacular fall colors. To carpool, meet at 8 am at the Vienna Metro station's north parking lot. Bring water, lunch and plenty of stamina. At 9 miles and 2200 vertical feet, it's not a hike for beginners. Leaders: Ray Evert, hikerdude22@msn.com or 703/408-7117 and, Janet Conley, jconley333@yahoo.com.

Sat.-Sun. Oct 23-24. Unrated. Backpack Duncan Knob Hollow, Luray VA. Moderate to easy backpack in this section of the George Washington National Forest west of Luray. We'll start Saturday with an easy hike along Passage Creek, and we'll have several good sites to choose from for our camp that night. The second day we'll go up Duncan Knob, which will give us the only difficult section, a steep incline, followed by a talus field near the summit and great views. Overall distance will be 13 miles. As weather conditions can vary a lot this time of year, participants will need to be prepared for colder temperatures with both their clothing and camping gear. Leaders: Jeff Tarbox and Liz Guertin. For reservations contact Jeff Tarbox, jhtarbox@gmail.com.

Sat. & Sun. Oct. 23 & 24 GB - Moderate. Car Camping at Caledonia State Park in PA
Camping and day hiking exploring lakes and streams in the Michaux State Forest in southern Pennsylvania. We will hike parts of the Appalachian Trail with some good views. Call Jack for details at 410-256-3963.

Saturday - Monday Oct. 23 to 25: Mid-State Trail Backpack, Iron Stone Loop, PA. 20 mile strenuous backpack. Daily mileage: 5/10/5. Rugged hike beginning at the Stone Valley

Recreation Area with lots of views from Tussey Mountain on the second day. Pre-register with Mike Juskelis, 410-439-4964, mjuskelis@cablespeed.com.

Sat. Oct. 23. Rated A. Fairfax Cross County Trail (CCT) VA. One-way 6.7-mile hike in Lorton/Springfield consists of Pohick Valley Stream Park, Laurel Hill and Giles Run Meadow loop trails. There are six fair-weather (concrete steps) and one stone stream crossings. Bring lunch and water. Meet at 9:30 am at Giles Run Meadow. Directions: I-495/I-95 (Capital Beltway south of DC) to I-95 S; 7 miles to exit 163, right on Lorton Rd. (Rte 642), 0.5 mile, right at 8400 Lorton Rd. into park. Parking lot on left past pond. Car shuttle required. Leaders: Henri Comeau hencom75@msn.com, and Frank Wodarczyk, fwhiker44@cox.net or 703/569-6737 (before 9:30 pm).

Sat. Oct. 23. Rated B. Trails in NW DC (Get-to-Know-DC Series). Moderately paced 6-7 mile loop hike using mostly wooded trails in the city as well as some streets in NW DC. Learn about how Sierra Club (and others) saved a park, where the UN was established and other interesting historical facts. The St. Sophia Greek Festival is not happening this fall, but we will walk the route past the Cathedral anyway. Meet at 10 am on Van Ness Street NW at the entrance to Glover Archbold trail, about a quarter block west of Wisconsin Avenue beside the McDonald's parking lot. The start is about a half mile south of the Red line's Tenleytown Metro station. Leader: Helen Epps, 202/363-1278 (leave message).

Sat. Oct. 23. Rated G. Halfmoon Mountain. This late-day circuit hike around Halfmoon Mountain (GWNF,

WV) features one of the most spectacular overlooks (Trout Run Valley, Big Schloss, Tibbet Knob, & Long Mountain) in the region. Expect rocky trails, stream crossings, mud, a rewarding view, and good company. We'll plan to finish just ahead of darkness, but with good weather, we may linger more. Ankle boots and a flashlight or headlamp are a must. Bring plenty of water (3 qt.) and shareable dinner. At 10 miles and 4,900' of elevation change, including a pretty strenuous stretch, this is a difficult hike. The hike is limited to 15 people; email leader to reserve a spot and get updates. Leader: Mike Darzi, michael.darzi@saic.com.

Sun. Oct. 24. Rated C. Raven Rocks Hike, An Appalachian Trail Gem. Trail-wise deceptively short, out and back it is but 6 miles total, yet a serious workout with many up/down pitches. It's like 10-12+ miles of average hiking. Fantastic views, especially at lunchtime at Raven Rocks Overlook with fall colors galore. Marvelous and magical quartz boulders and fragments make this a true AT gem. Be sure to bring good lunch and good humor. Also, good dogs bringing their owners are welcome, contact leader to verify. Meet at Vienna Metro, 9 am, north parking lot. Leader: David Burd, dburd26@hotmail.com or 703/998-9390.

Sun. Oct. 24. Rated E. Dickey Ridge Trail, Northern SNP. Fall colors should be glorious for this 10.8 mi. hike along the Dickey Ridge Trail from entrance on Skyline Drive to AT, with return to Lands Run Gap via Springhouse and Dickey Ridge Trails; short car shuttle required. Meet 8 am at Oakton Shopping Center (near MacDonald's). Leaders: Christine Ford, 703/425-6899 (before 9 pm) or

christine@clkford.com, and Marcia Wolf, 301/565-3165 (before 9 pm) or wolfmk@comcast.net.

Sat. Oct. 30. Rated C. Lands of Rolling Ridge Foundation. Take part in a moderately paced hike of up to 8 mi. in a secluded and private nature preserve on the forested western flanks of the Blue Ridge just inside West Virginia and south of Harpers Ferry. It is likely to include at least part of the new Perimeter Trail, as well as—as usual—an optional buffet lunch at the Niles Cabin. Visit the SCPRO website (www.sierrapotomac.org) after Oct. 1 for details on the hike, the lunch, and the driving options. Joint event with AMC/DC. Leader: Paul Elliott, 202/550-2841.

Sat. Oct. 30. Rated C. Raven Rocks Hike, An Appalachian Trail Gem. Trail-wise deceptively short, out and back it is but 6 miles total yet a serious workout with many up/down pitches. It's like 10-12+ miles of average hiking. Fantastic views, especially at lunchtime at Raven Rocks Overlook with fall colors galore. Marvelous and magical quartz boulders and fragments make this a true AT gem. Be sure to bring good lunch and good humor. Also, good dogs bringing their owners are welcome, contact leader to verify. Meet at Vienna Metro, 9 am, north parking lot. Leader: David Burd, dburd26@hotmail.com or 703/998-9390.

Sun. Oct 31. Rated A. Billy Goat A & Great Falls, Maryland. Moderately paced 4.5 mile hike on the rocky Billy Goat A trail and back on the C&O Canal towpath. We'll also hike out to the Great Falls Overlook. Don't let the hike rating fool you, be ready to climb over a lot of rocks and use some leg muscle on this one. Wear good closed-

continued ↩

Outings (October, November)

←continued

toe shoes, no sandals or flip-flops. We will try to hike back on the canal right around sunset to witness the great spectacle of dusk-time fauna. Last time I hiked this at sunset, I saw a great many herons, turtles, fish, birds, OWLS, lizards and deer. Not to mention the reflection of sunset on the Widewater portion of the C&O Canal. It's gorgeous. Meet at the C&O Canal Parking lot across the street from Old Angler's Inn, next to the portable bathrooms at 3:30pm. Leader: Liz Guertin, eguertin@yahoo.com or 202/415-4639 (until 9 pm).

Sun. Oct. 31 GB - Easy. "Last Sunday Easy Hike"

Meet at 2:00 PM at the Paper Mill Road parking lot for the NCRR trail. Hike at an easy pace on flat paved surface to the Phoenix Rd parking lot and back, which is about 3 miles roundtrip. Scenic rest stops and historical sites along the route. Dogs, children, and wheelchairs are welcome. Optional dinner afterwards. For details, contact Paul at 410-667-4889 or paul@peschoen.com.

Sun. Oct. 31 GB – Easy. Halloween Hike at Cromwell Valley Park (older children and dogs welcome) 4 miles. Cromwell Valley is a relatively small park adjacent to Loch Raven Reservoir. Yet it is surprisingly diverse, including a farm, gardens, pretty glens, and even a natural spring. The area is especially known for birding. Trails are mostly level, with one moderate climb up the ridge. See restoration efforts at removing invasive plants. Optional meal afterward at Sander's Corner Restaurant. From I-695 take Cromwell Bridge Rd. northeast. Meet at 1:00 PM at parking lot at end of Sherwood Farm entrance (first entrance coming from Beltway). Children under 18 must be accompanied by an adult.

Cancelled for storms or steady rain. For more details, call Alan at 443-212-5082 or email apenczek@stevenson.edu.



November

TUESDAY, NOVEMBER 2

Vote in the General Election on Nov. 2!



Support our Chapter's Endorsed Candidates!

Sat. Nov. 6 GB - Moderate. Kelly Run & Pinnacle Overlook Hike

8 miles exploring gorges with great overlook of the Susquehanna River. This hike also has a good chance of seeing migrating waterfowl and bald eagles. Meet at 10:00 AM at the K-Mart on Rt. 1 (Bel Air Rd.) just north of the Baltimore Beltway Exit 32. Call Jack for details at 410-256-3963.

Sat. Nov. 6 - Caving in Virginia

Join us for an exciting underground adventure. We will spend about four hours in Crossroads Cave near Lexington, Virginia. This is wild caving (spelunking), no steps and handrails. It is mostly walking and scrambling over rocks. There will also be some crawling,

moderately tight passages, and climbing (no ropes needed). The difficulty level is moderate. The cave is very interesting with lots of beautiful flow stone formations and passages. We will have a pre-trip meeting in Annapolis one evening before the trip to go over safety and what to expect. We will provide all the gear you need including helmets, lights, and gloves (some kneepads are available too). We will meet at 10:00 am in Staunton, VA (on I-81 about 3-1/2 hours from Annapolis) or organize a car pool. We'll eat lunch inside the cave. On the way home we will probably stop for dinner and be back to Annapolis by 9:00 pm. No experience necessary. **The trip is limited to eight people plus the two trip leaders.** Pre-registration is required. For more information contact Bill at 410-263-4102 or email at billshumanjr@gmail.com.

Sat. Nov. 6: Family Volunteer Day - Reptile & Amphibian Search. Search for wildlife in Western Regional Park in Glenwood, 9AM to noon. The Howard County Department of Recreation & Parks is recording amphibian and reptile sightings as part of a state-wide survey. Bring work gloves, water, and shoes with covered toes. For details contact Sue Muller, 410-313-4697, smuller@howardcountymd.gov.

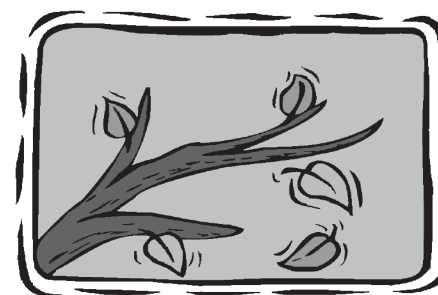
Sat. Nov. 6: Mattawoman Creek Paddle Trip Experience a last best remnant of Maryland's Chesapeake Bay, a tidal fresh water estuary teeming with eagles, herons, beaver, otters, bass and migratory fish, and American lotus. A new highway and development threaten this gem, a poster child for sprawl's effects on the bay. 10 AM - 1 PM Meet at dock at 108 Mattingly Ave, Indian Head, MD 20640. Bring own boat or rent on-site. Call to sign up 301-277-7111 check maryland.sierraclub.org

Sun. Nov. 14 GB - Moderate.

Jerusalem Mill Hike (Dogs and older children are welcome) 6 mile hike in the Jerusalem Mill section of Gunpowder Falls State Park. Hike through a covered bridge and along a wilder section of the Gunpowder River, with beautiful rapids over rocks and forests. Afterwards, visit living history interpreters, including a blacksmith, who re-create village life in the 1750-1790 era at the historic Jerusalem Village and its mill. Meet at 11 AM in the Jerusalem Mill parking lot beside the blacksmith shop. Reach the park from Belair Rd. north of the Baltimore Beltway, taking the right fork onto Jerusalem Rd. in Kingsville. For more information, contact Mary at 410-239-4590 (home), 443-386-0862 (cell), or email at XxDiTz4LyFXX@aol.com.

Sun. Nov. 28 GB - Easy. "Last Sunday Easy Hike"

Meet at 2:00 PM at the Paper Mill Road parking lot for the NCRR trail. Hike at an easy pace on flat paved surface to the Phoenix Rd parking lot and back, which is about 3 miles roundtrip. Walk off some of that Thanksgiving turkey! Scenic rest stops and historical sites along the route. Dogs, children, and wheelchairs are welcome. We will finish the hike in time to attend the Baltimore Green Forum at MD Presbyterian Church 4:30-6:30. Optional dinner afterwards. For details, contact Paul at 410-667-4889 or paul@peschoen.com.



continued →

Outings (December)

←continued

December

December Anytime – Cross Country Skiing

When snow conditions allow, local skiing or trip to Western Maryland or West Virginia may be planned. Call Jack for details at 410-256-3963.

Sun. Dec. 5 GB – Moderate. Gunpowder River Hike

8 miles along the Gunpowder River in the Hereford area. Meet at the Mt. Carmel Rd. park and ride off I-83 north of the Baltimore Beltway at 11:00 AM. For details, call Jack at 410-256-3963.

Sat. Dec. 11 GB - Easy/Moderate. Holiday Hike through Hampden and on Jones Falls Trail through Druid Hill Park (Older children are welcome)

4 miles on mostly flat paved trail and sidewalks beginning with a waterfall on the Jones Falls and a stroll around Druid Lake on a ridge overlooking the City. Visit the glass house of the Conservatory and Botanical Gardens, decorated with poinsettias for the holidays. Continue through the Druid Hill Park on the Jones Falls Trail into the yuppified Woodberry and Clipper Mill area. Walk through Hampden, past shops decorated for the holidays. Lunch stop at an area restaurant. Finish by walking down the Miracle on 34th Street, with its holiday decorations, then past the old mill houses in Stone Hill back to our cars. Children under 18 must be able to hike this distance and be accompanied by a parent or other responsible adult. Meet at 11 AM and park in the parking lot on the left of Wyman Park Drive beside the Boy Scouts headquarters with the Jones Falls Trail sign, opposite the ex-Stieff Silver building. From 28th or 29th Street just east of the Jones Falls Expressway, turn north onto Keswick

Rd./Sisson St. and then take the first left onto Wyman Park Drive. For more information, contact Mary at 410-239-4590 (home), 443-386-0862 (cell), or email at XxDiTz4LyFxX@aol.com.

Sun. Dec 26 GB - Easy."Last Sunday Easy Hike"

Meet at 2:00 PM at the Paper Mill Road parking lot for the NCRR trail. Hike at an easy pace on flat paved surface to the Phoenix Rd parking lot and back, which is about 3 miles roundtrip. Break in those new boots you got for Christmas! Scenic rest stops and historical sites along the route. Dogs and children OK. Wheelchairs are welcome - I'll hitch up Muttley and you can go for a wild ride! Optional dinner afterwards. For details, contact Paul at 410-667-4889 or paul@peschoen.com.



To make
democracy work, we
must be a nation
of **participants**, not
simply observers.
One who does not
vote has no right
to complain.

—Louis L'Amour

BICO Outings

BICO Outings

Sierra Club Inner City Outings is a community outreach program providing opportunities for urban youth and adults to explore, enjoy and protect the natural world. It was founded in 1999 with the goal of providing underserved Baltimore City youth with educational, enjoyable and safe outdoor experiences at no cost to them. Since start-up, BICO has conducted more than 350 outings serving over 3,000 youngsters.

BICO provides environmental education and promotes:

- * Respect for the outdoors
- * Teamwork and leadership skills
- * A community service ethic

BICO's outings in and around Baltimore include:

- * Nature hikes & orienteering
- * Camping, canoeing, cycling & caving
- * Initiative and Confidence coursework
- * Community service for Baltimore's Recreation & Parks Department

For more information, please send inquiries to baltimoreinnercityoutings@gmail.com, or visit our web site at <http://ico.sierraclub.org/baltimore>

October

- | | |
|-------|--|
| 9 | Chesapeake Bay Foundation Education Vessel Snowgoose |
| TBD | |
| 20 | Monthly Meeting |
| 22-24 | Camping @ Pocomoke DHH |
| 23-24 | Camping @ Pocomoke CGCC |
| TBD | TBD BT DHS |

November

- | | | |
|-----|-----------------------------------|----------------------------|
| 6-7 | Blackburn PATC Cabin | Cesar Chavez Middle School |
| 13 | 10,000 Step Hike @ Patterson Park | DHH |
| 17 | Monthly Meeting | |
| TBD | TBD | BT DHS |
| TBD | TBD | CGCC |

December

- | | | |
|-----|-----------------------------------|-----|
| TBD | Smithsonian Museums & Walter Reed | DHH |
|-----|-----------------------------------|-----|

Abbreviations:

- | | |
|--------|--|
| BT DHS | Baltimore Talent Development High School |
| CGCC: | College Gardens Community Center |
| DHH: | Digital Harbor High |

The Chesapeake is published quarterly by the Maryland Chapter of the Sierra Club. Annual Sierra Club membership dues pay for subscription to this publication. Non-members may subscribe for \$20.00 per year.

The opinions expressed in this newsletter are in general aligned with those of the environmental community in Maryland but are strictly those of the authors and not necessarily official policy of local, state or national Sierra Club entities. The Sierra Club prides itself on being a grassroots volunteer organization. The concerns and opinions of all its members are welcome in these pages.

Items for publication are best submitted by email to <maryland.chapter@sierraclub.org> or <laurel.imlay@sierraclub.org> with "For Chesapeake" and title in subject line. Items must include the author's address and telephone numbers. Material may be edited for length, content or clarity at the discretion of the editor. Photographs, illustrations and other works of art are welcome. Materials cannot be returned unless accompanied by a stamped, self addressed envelope.

Change of address: send address changes to the Sierra Club, 85 Second Street (2nd Floor), San Francisco, California 94705-3441. For fastest service, please include your old and new addresses along with your 8-digit membership number. For local membership information contact the Maryland Chapter Office 301-277-7111 or write: Maryland Chapter/Sierra Club, 7338 Baltimore Ave (Suite 101A), College Park, MD 20740.

Advertising: For display and classified advertising rates and information, contact:
Editor, *Chesapeake*
Sierra Club Maryland Chapter
7338 Baltimore Ave, Suite 111
College Park, MD 20740

Credits

The Maryland Chapter wishes to thank those who contributed to this issue of *Chesapeake*, with special thanks to Betsy Johnson, political chair.

Writers and Contributors: Betsy Johnson, Alana Wase, Ron Henry, Dave O'Leary, Matt Dernoga, Chris Yoder, David Prosten, Gregor Becker, Susan Eisendrath, Bonnie Bick, Jim Long

Editors: Betty Brody, Mary Corddry, Becky French, Laurel Imlay, Betsy Johnson, Dave O'Leary, Cindy Paré, Darla Tewell, Alana Wase

Outings Editor: Jan Hoffmaster

Publication Layout: Darla Tewell

VOTE on November 2

Voting is one of the most important actions you can take to protect and preserve the environment.



Inside, find out which candidates will represent your environmental interests. *The polluters will be voting; make sure you will, too.*



Ready. Set. Vote!

Look inside for

- ~Our endorsements!
- ~Local environmental issues
- ~How you can help your candidates
- ~Ways to enjoy autumn in Maryland's great outdoors

Vote on November 2

NON PROFIT
ORGANIZATION
U.S. POSTAGE
PAID
ELKTON, MD
PERMIT NO 85