



# Shawnee Trails



<http://illinois.sierraclub.org/Shawnee/>

**Sierra Club – Shawnee Group**

**December 2015 – February 2016 QUARTERLY**

## In This Issue:

Climate Change and Security Pg 1-2  
SI Alternative Gift Fair Pg 2  
Fall Programs Pg 3  
Hicks Dome Pg 3  
Fall Outings Pg 4  
ExCom Candidates Pg 5  
Shawnee Parkway Project Pg 6  
Clean Power Plan Repeal Bill Alert Pg 6  
State Park Alert Pg 7  
Volunteer, Execom Nominations Pg 8  
Calendar Sales Pg 8

## Shawnee Group Contact Information:

Shawnee Group Sierra Club  
PO Box 117, Carbondale, IL 62903-0117

### Website:

<http://www.illinois.sierraclub.org/shawnee>  
or <http://shawneegroup.blogspot.com>

### Chair, Chapter Delegate, Conservation

**Chair:** Barb McKasson 618-529-4824

[babitaji@aol.com](mailto:babitaji@aol.com)

### Vice Chair, Membership Co-Chair: Dorcy

Prosser 618-457-6535

[dorcyprosser2001@yahoo.com](mailto:dorcyprosser2001@yahoo.com)

### Secretary, Program and Publicity Chair:

Ruth Kelley 618-684-2196

[rth\\_kelley@yahoo.com](mailto:rth_kelley@yahoo.com)

### Treasurer: Patty Weyhrich

[pweyhrich711@hotmail.com](mailto:pweyhrich711@hotmail.com)

### Legislative/political/lobbying Chair: Jean

Sellar [biojean@peoplepc.com](mailto:biojean@peoplepc.com)

### Conservation Co-Chair/Alternate Chapter

**Delegate:** Anton Kvernes 618-457-5570

**Membership Co-Chair:** John Cox, 618-713-2840

### Hospitality: Open

**Outings:** Steve Eberhart,

[eberpsy@frontier.com](mailto:eberpsy@frontier.com)

**Newsletter Editor:** Sabrina Hardenbergh

[sabrina@midwest.net](mailto:sabrina@midwest.net)

**Webmaster:** Christina Cannova

[simoncini2@yahoo.com](mailto:simoncini2@yahoo.com)

## Climate Change, Food Security, Water, and National Security

*By Sabrina Hardenbergh*

Many Congressmen, legislators and other decision-makers display denial of climate change. However, other components of national and international government are on a somewhat similar page as environmentalists and researchers concerning the interconnections between climate change, food security, water and national security. Recognition of these interconnections has been known by certain sectors for a while. Yet such systemic analysis and its use may be obscured or repurposed by prevailing political orientations, media, popular research, education and program paradigms of the day, and importantly, business PR.

Energy sector CEOs, Congress and legislatures have been busy submitting court cases and bills to cancel recent Environmental Protection Agency Rules, such as the Clean Power Plan or the Clean Water Act Rule. Still, the [Department of Defense recently affirmed the national security risk of climate change](#) which these policies in part attempt to mitigate. Climate change aggravates existing problems, including poverty, social tensions, environmental degradation, ineffectual leadership, and weak political institutions that threaten domestic stability in a number of countries. The DOD links instability to drought in Syria, or floods in Pakistan. Melting Arctic ice exposes oil and gas fields and other minerals which Russia, Norway and other countries are claiming, prompting concern for geopolitical instability.

[Drought in Syria](#), ISIS, the November, Friday 13<sup>th</sup> Paris attacks and retaliation, just prior to the [21st Conference of the Parties \(COP-21\) of the United Nations Framework Convention on Climate Change](#), or Paris 2015 Climate Summit, is a recent poster child of the climate-security nexus for [civil war](#). However, the State Department and United Nations have sought to model and monitor climate change, food, and resource security for purposes of national security for some decades. Paris 2015 is the eleventh session following up the 1997 [Kyoto Protocol](#) linked to the United Nations Framework Convention on Climate Change. Its Parties committed to internationally binding emission reduction targets, emissions that result from more than 150 years of industrial activity. Although the U.S. signed the Kyoto Protocol in 1998 under President Clinton, subsequently it was never ratified by the Senate and the Bush administration, oriented around the fossil fuel industry. While the Intergovernmental Panel on Climate Change (IPCC) 5<sup>th</sup> [Assessment Report](#) on climate change finally

*(Continued on Page 2)*

(Climate Change and Security, Continued from Page 1)

caught much international attention leading up to the 2014 March on Wall Street and New York Climate Summit, the IPCC has produced a [sequence of climate change assessments and related analysis since 1990](#). [Research on energy industry emissions](#) over the last century and more indicate anthropogenic factors in climate change. Further, an exposé on [Exxon](#) and other [energy companies](#) clarifies that the industry has been aware of the climate change and emissions relationship for a few decades, but used [doubt](#) and deflection PR tactics to obscure the issue. Meanwhile, considerable conflict in the oil rich Middle East ensued during the Bush administrations.

Further consideration of food security, climate change, conflict and security would have to consider analysis and modeling of the droughts in Sahelian Africa and elsewhere, famine, refugee assistance, and conflict during the 1980's and early 1990's. I and countless others in international development helped collect the observations and review earlier reports on the [political ecology of food security](#), local people's coping strategies, and the breakdown of coping strategies when impeded by other parties' interests. While food shortage and famine leads to a spinning down of assets toward eventual exhaustion and social breakdown, recovery phases are noted as periods when [conflict](#) might ensue from people fed up with the situation but now a little stronger to act. Michael Watts illustrated this in intricate ecological and political detail in [Silent Violence](#), an historical account of food insecurity in Nigeria. Hence, analysis and modeling in this style led to [Famine Early Warning Systems](#), Food and Nutrition Technical Assistance ([FANTA](#)), [CCAPS \(Climate Change and African Political Stability\)](#), housed at the [Robert S. Strauss Center for International Security and Law](#) at UT-Austin), etc., which became tools to monitor and predict famine and conflict vulnerability. These monitoring systems were used for humanitarian aid delivery, as well as military actions. Unfortunately, many decision-makers that may be informed by the models seem more drawn by the military actions, wherein business interests are sometimes apparent, especially as pertains to the energy and military industry, or to Big-Agriculture and Pharmacy. Thus, U.S. national security interests, shaped in large part by corporate interests, run up against [United Nations agroecology](#) orientations wherein security includes more diversity to maintain local ecology and health. Many indigenous people and organic farmers oriented to local and regional markets are more aligned with the UN security interests than some in the State Department. Our national security interests are sometimes an oxymoron, creating climate, food and local-to-global insecurity, while perpetuating particular market sectors. Still, agencies like [NASA](#), [NOAA](#) and [USGS](#) have sophisticated multi-level systems modeling tools at their disposal to track climate change and related resources that could be better used by decision-makers.

**[Southern Illinois Alternative Gift Fair](#)**

**Sunday, December 6th, 2-5 pm**

**Carbondale Civic Center**

**Live Music. Silent Auction. Local art & gifts for sale.**

Come to support Shawnee Group Sierra Club and over 20 other local non-profit groups. Enjoy a mindful holiday, engage our community, help create a just economy and make a positive impact on the world with our consumer choices this season!

Fun and learning opportunities for the whole family while you shop! Sponsored by the Carbondale Unitarian Universalist Fellowship and friends. For more information, contact Jess at 534-1162 or Mary at [maryinbantry@yahoo.com](mailto:maryinbantry@yahoo.com).

The Illinois Chapter Sierra Club's Frack Fight Team is steered by Terri Treacy ([terri.treacy@sierraclub.org](mailto:terri.treacy@sierraclub.org)).

To receive periodic updates and communications from local and national Sierra Club, become a member of Illinois Chapter's Frack Fight Team: [http://action.sierraclub.org/site/Survey?ACTION\\_REQUIRED=URI\\_ACTION\\_USER\\_REQUEST\\_S&SURVEY\\_ID=138181](http://action.sierraclub.org/site/Survey?ACTION_REQUIRED=URI_ACTION_USER_REQUEST_S&SURVEY_ID=138181)

**FYI**, to receive more timely alerts from the Illinois Chapter of the Sierra Club, sign up online at their state website: [https://secure.sierraclub.org/site/SPageNavigator/Chapter/il\\_newsletter\\_signup.html;jsessionid=84420F4C49A5A8CD264E1E3C3F131E25.app205a](https://secure.sierraclub.org/site/SPageNavigator/Chapter/il_newsletter_signup.html;jsessionid=84420F4C49A5A8CD264E1E3C3F131E25.app205a)

**WINTER 2015/2016 PROGRAMS NOTE: Start time at 7 PM!**

**Location:** REAR entrance, through green door in alley, of the Carbondale Township Meeting Room at 217 East Main, across from Rock Hill Baptist Church (at Monroe and Marion Streets). The front door is locked! FREE and open to the public. Refreshments and socializing before and after meeting.

**Thursday, December 10, 2015 at 7 pm**

**Speaker:** Brett Denny (ISGS Economic Geologist), Hicks Dome – Almost a Volcano?

**Dinner at 5 pm:** Qin Guan, 1285 E. Main, Carbondale 618-351-1222

**Thursday, January 14, 2016 at 7 pm**

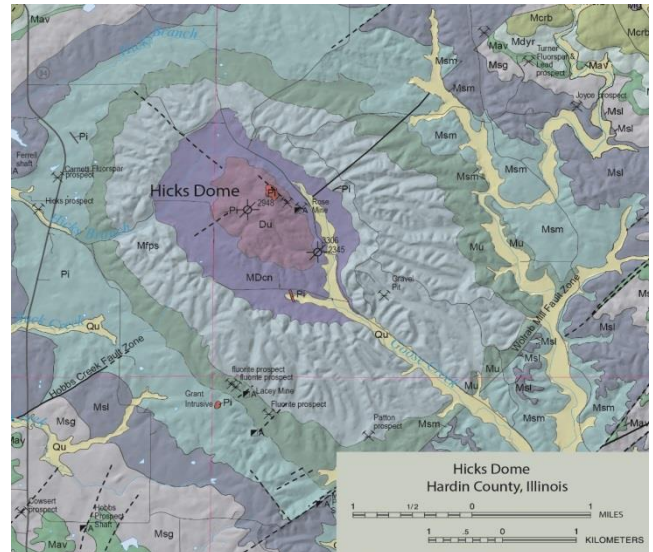
**Speaker:** John Schwegman, Kincaid Mounds, Center of an Ancient Chieftom

**Dinner at 5 pm:** Longbranch Café, 100 East Jackson, Carbondale 618-529-4488

**Thursday, February 11, 2016 at 7 pm**

**Speaker:** TBA

**Dinner at 5 pm:** TBA

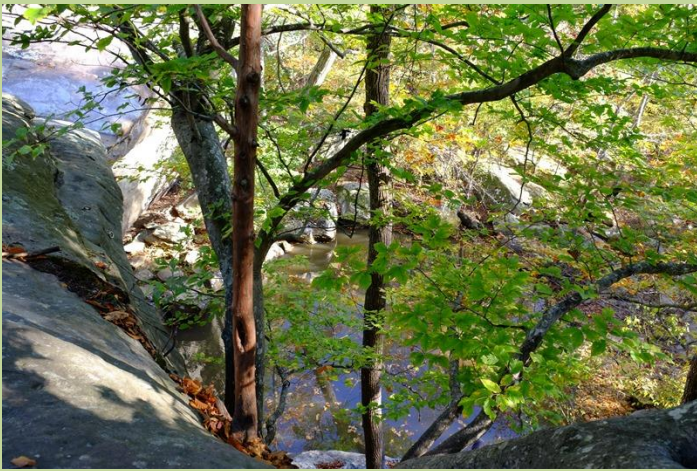


**Hicks Dome: A Volcano?** *By Ruth Kelley*

[Hicks Dome](#), located in Hardin County, Illinois, has been an enigma for many years. Geologic forces uplifted the rocks at the apex of Hicks Dome 1200 meters forming a circular feature that can be observed on aerial photographs and geologic maps (see figure). It has been suggested that the circular feature is a result of a meteorite impact, but there is no field evidence to support the meteorite impact theory. The features you would expect to observe at meteorite impacts sites such as shatter cones, shocked quartz with planar deformation features, and tektites have never been found in the area. A cryptovolcanic or cryptoexplosion theory related to igneous activity is the most logical explanation for the uplift at Hicks Dome. The igneous rocks were sourced from the upper part of the earth's mantle and have been classified by various workers as kimberlite, alnöite, aillikite, and minette. The igneous rocks associated with Hicks Dome have been dated by radiometric methods to have been emplaced about 270 million years ago. Several geologists have speculated the igneous activity is related to the Illinois-Kentucky Fluorspar District. In fact there is fluorite about 2000 feet below the surface of Hicks Dome at which is associated with unusual rare earth minerals. The interaction of groundwater and ascending ultramafic rock may have produced a phreatomagmatic event that sharply uplifted the bedrock at Hicks Dome. The association of rare earth minerals and fluorite beneath Hicks Dome suggests a carbonatite phase may also be associated with the ultramafic activity. Because there are very few samples of the mineralized material at depth beneath Hicks Dome we can only speculate on the origin of the uplifting forces and the source of the mineralization beneath Hicks Dome.

**[Hick's Dome LLC Prospecting Permit](#)**

Geological prospecting was [proposed](#) for Hick's Dome in Hardin County in 2012, and the Forest Service received public comments during April and May 2015. Potential waste containment and health issues are of concern, whether during core drilling of [radioactive rare earth elements \(REEs\)](#), including [thorium](#), or later possible mining. Moreover, IDNR just approved an [oil drilling permit in Hicks Dome](#), which prompts similar concerns. REEs are used in electronics, hybrid vehicles, wind turbines, and cell phones. China supplies most REEs presently. Read the [Project Documents](#) and about [REEs and environmental issues](#).



Pool and trees below Jackson Falls. By Sabrina Hardenbergh

**WINTER 2015/2016 SIERRA CLUB OUTINGS**

**Sunday, December 6, 12:30 pm, Jackson Falls**

Very scenic hike on 4+ mile rugged loop. To carpool from Carbondale, meet at the Murdale Shopping Center sign BEFORE 11:15 am. OR be at Ozark General Store (Rt. 45 & Ozark Rd.) BEFORE 12:30 pm. Bring water & snack. Walking stick and sturdy shoes recommended. Call hike leader Bob Mulcahy at 618-942-6342 to reserve a spot by Saturday, Dec. 5th.

**Saturday, January 16, 1 pm, Service Outing, Fern Rocks Nature Preserve, Giant City State Park.**

Meet at the Giant City State Park visitor center. We will have training in identifying and pulling Japanese stilt grass and winter creeper. Then we will proceed to the Nature Preserve to do the pulling. Refreshments and socializing will be around 3 pm. Wear sturdy shoes and bring water. Work gloves will be provided. A rain/snow date will be Sunday, January 24 at 1 pm. Call Barb McKasson at 618-529-4824 to sign up.

**Sunday, February 7, 1-3:30 pm. Pine Hill cultural history tour with Kay Rippelmeyer-Tippey.**

Meet by the sign at Murdale shopping center before 12:15 to caravan to Trail of Tears State Park. The tour will begin at the white barn at the park. We will drive in our cars through the Trail of Tears park, Camp Hutchins CCC site, Pine Hills, Winter's pond and the Big Muddy levee road. Both the natural and cultural history of those areas will be discussed, including the history of the Native Americans, first settlers, the hermit of Pine Hills, the CCC camps, and environmentalist efforts. Kay is the author of *The Civilian Conservation Corps in Southern Illinois, 1933-1942* and has led many tours of this area. RSVP to Steve Eberhart at [eberpsy@frontier.com](mailto:eberpsy@frontier.com) or 687-2998 to reserve a spot for the outing.

**Piasa Palisades Group Outings Chair:**

Carol Klinger, 618-288-5506,

[ciklinger@yahoo.com](mailto:ciklinger@yahoo.com)

<http://illinois.sierraclub.org/PiasaPalisades>

**Eastern Missouri Group Outings Chair:**

Bob Gestel 636-296-8975, [rgestel@sbcglobal.net](mailto:rgestel@sbcglobal.net)

<http://missouri.sierraclub.org/emg/outings.aspx>

**Future Outings TBA:**

Updates listed on our website:

<http://illinois.sierraclub.org/Shawnee/>

Other short notice outings and events may be announced on our Facebook page:

<https://www.facebook.com/SierraClubShawnee>

**Call for articles and photographs for Shawnee Trails!**

The next issue will be published in May. Please send your Word, PDF or JPG files to [sabrina@midwest.net](mailto:sabrina@midwest.net) by **February 15th.**

**Volunteers Needed to Help Protect Shawnee National Forest**

Protecting Shawnee National Forest involves frequent communication with the Forest Service, research on issues, and educating others about those issues. We especially need help in keeping oil and gas wells out of the forest - including fracking wells. Please contact Barb at [babitaji@aol.com](mailto:babitaji@aol.com) if you are interested in helping in any way.

## **Shawnee Group Executive Committee Candidates for 2015 Election – Vote for 4**

**Joe Dobson:** I'm a retired housekeeper from Marion, IL Veterans Affairs Medical Center (VAMC). Prior to this I was the gardener at the Reno, NV VAMC for eight years. During that time, I received Master Gardener training from the University of Nevada cooperative extension. I would like to do something for the community and the Sierra Club provides a wonderful opportunity. As I'm sure most of us in the Sierra Club feel, there are few if any thing more important than the environment. I would like to help.

**John Magney:** Like many people my age, I became more aware of the environment in the 1970s. I discovered Joh Muir's delightful writings, began doing more hiking and camping, took up cross-country skiing, and began following the political fights going on over pollution, wilderness preservation and other issues. After I finally finished graduate school at Ann Arbor, I lived for a time in a small town (Menominee) in Michigan's upper peninsula where I was a co-manager of a natural foods co-op. While in Menominee, I helped organize a community recycling effort and wrote a column for the local newspaper on recycling and waste issues. In 1991, my wife Andrea and I moved to Carbondale, where I had landed a job teaching technical management at SIUC. I was pleased to find an active Sierra Club group here, and I joined after attending a meeting at the old Unitarian Fellowship. On campus, I was involved in the successful effort to organize the Faculty Association, IEA-NEA in 1996. I subsequently held a number of positions in the FA and also served for a time on the board at Neighborhood Co-op and the local chapter of the ACLU. I retired from SIUC in May 2014. I am currently finishing a book project that grew out of a course I developed on green technology in my final year of teaching.

**Jean Sellar:** As co-chair of the Conservation Committee and the Political Committee of the Group, I lobby state legislators, contribute to policy statements, and am actively involved in commenting on USFS projects in the Shawnee. My background is in restoration ecology, and in the past I oversaw the implementation of thousands of acres of restoration. Right now, I do it on my 64 acres near the Shawnee National Forest and Trail of Tears State Forest.

**Jane Cogie:** For the past 24 years, I have enjoyed living and working as a teacher in Carbondale – and learning about the great variety of the plants native to this area. Now retired, I want to go beyond my hobby of learning how to maximize water use through rain gardens and native plants and devote more time to preserving the impressive environment of southern Illinois. An Executive Committee position seems a productive way to do that, given the valuable projects the Shawnee Sierra Club regularly sponsors. I am particularly interested in working to stop fracking, one of our region's most pressing environmental issues, along with related issues like mining, transport, and use of carbon fuels. Integral to these issues is the urgency of promoting policies and practices that support clean jobs, especially in our region where so many jobs are tied into fossil fuel extraction. I'm also passionate about working to sustain (and, as relevant, restore) biodiversity, particularly endangered species. Industry tends to see both biodiversity and clean jobs as blocking profits. Our actions must counter industry's stance while raising awareness of our well-being as inseparable from nature's. Being on the Executive Committee would provide a strong position from which to collaborate with others in our community to protect and restore the natural world we are lucky enough to have on our doorstep.

### ***VOTING INSTRUCTIONS:***

***Must be a current member.***

***Include your name on your vote.***

***Deadline December 20<sup>th</sup>, 2015.***

***May vote for 4 candidates.***

***Please write candidate names on paper for which you are voting and mail to:  
Sierra Club Shawnee Group, PO Box 117, Carbondale, IL 62903-0117***

**OR** also watch for our **Sierra Club Election Ballot** in *The Prairie State Update* brochure, recently mailed by Illinois Chapter Sierra Club.



**VOTE!**

The previous Shawnee Trails newsletter indicated the July 2015 [cancellation](#) of the controversial [I66 Corridor Project](#) when [Kentucky withdrew](#), and new shorter Shawnee Parkway project, now exploring routes between I57 and Cape Girardeau, MO. Shawnee Parkway Project [completion is estimated for 2018](#). I66 was part of an [East-West Coast project](#). Interestingly, the Parkway could also potentially facilitate increased over-the-road hauling of the energy industry's products, supplies and waste from the Indiana oil, gas and coal fields, recently facilitated by newly constructed section of I69 between Indianapolis and Evansville, or our own fossil fuels, to the Mississippi or further south to the Gulf. The [Michigan-Texas](#) (e.g., [Canada to Mexico](#)) [I69 Project](#) was earlier [contested](#) for [environmental, NAFTA, trafficking and aesthetic reasons](#). Shawnee Parkway construction and use may negatively impact the Cache River Wetland region, the Shawnee National Forest, the historical Trail of Tears, Mississippi bottomlands, business in Anna-Jonesboro and Cairo, as well as residents' property and quality of life.

Initially listed Community Advisory Group (CAG) stakeholders seemed to be pro-Shawnee Parkway, a number from Cape Girardeau, while those opposed appeared relegated to simply sending in their comments. Minority and low-income people were not represented. Proper public notice of the meeting in the news did not occur. Federal I66 Corridor Project closed and IDOT's Shawnee Parkway Project is a new project, but no EIS was performed. Given these and other irregularities, the legality of the new project has been questioned. Shawnee Parkway Project argues that some of this [input was collected in the I66 Corridor Project](#) phase; however, according to an August 2015 notice in the Federal Register, the [I66 EIS was also canceled](#), wherein comments on this cancellation may also be submitted. Documents and comments for the earlier I66 Project may be reviewed [here](#). What happened with the [\\$661,151](#) transportation grant is unclear. After the first October 21<sup>st</sup> CAG meeting ([see minutes](#)), CAG [expanded somewhat](#) to include other attendees, including Sierra Club, and other environmental and community groups.

Future meeting schedules and/or [minutes](#) may appear on the website or newsletter. **Read** the Shawnee Parkway [website](#), **subscribe** to their [newsletter](#), and **submit** online [public comments](#).

### **A THANK YOU AND ALERT: Help Save Obama's Clean Power Plan!**

*By Barbara McKasson*

Senator Mark Kirk had stated that he would vote in favor of repealing the Obama Administration's Clean Power Plan. However, with pressure from people like you, Senator Kirk changed his mind and voted against repealing the Plan. We now need to thank Senator Kirk for his "No" vote on the bill to repeal – one of only three Republican Senators to vote "No." At the same time, we must urge him to continue to support the Plan on any future votes, including support of a veto by the President.

The proposed Clean Power Plan would slash carbon pollution from power plants, the single largest source of CO2 pollution, and would help shield communities from the health and economic impacts of climate change. Each state must develop its own plan to meet the goals in the federal plan.

The Illinois Clean Jobs Bill is being driven by the federal Clean Power Plan, so repealing the Clean Power Plan would help deflate the Illinois Clean Jobs Bill, which would mean two giant steps backwards on curbing global warming and climate change. Tell Senator Kirk that by supporting the Clean Power Plan and the Illinois Clean Jobs Bill, he is also helping to create over 480,000 jobs in Illinois within the next 15 years.

**Call Senator Kirk ASAP, 202-224-2854.** Tell him to protect Illinois' economy and environment from the dire effects of climate change by voting NO on any bills that would block the Clean Power Plan, and to vote to uphold a veto, if Obama does veto the Congressional bill that would repeal the Plan.

Do you enjoy hiking, picnicking, camping, wildlife watching or horseback riding in one of our Illinois State parks – Giant City, Ferne Clyffe, Horseshoe Lake, Mermet Lake or Trail of Tears? Do you value the water birds, frogs and other wildlife at the Cache River Natural Area and Barkhausen Wetlands Center? Do you want the Tunnel Hill Bike Trail to be maintained and improved? Is protecting our state high quality natural areas and wildlife important to you? If you answer “YES”, then it’s time to let your state legislators and Governor Rauner know that you care what happens to our state parks.

Because of the state budget impasse, the Illinois Department of Natural Resources (IDNR) has been left out in the cold, with bills unpaid for at least five months. Site Superintendents at Wayne Fitzgerrell State Park, Cave-in Rock, Pyramid State Park and all the other Southern Illinois state parks are putting on a brave face in spite of the fact that they are running on the good faith of electric companies and hoarded supplies of fuels to run their daily operations. What if water supplies are turned off because of unpaid bills? Will our parks start to close? Are you concerned about wildlife? The budget for the Endangered Species Protection Board budget has been zeroed out, with the Executive Director laid off. Contractors working on restoration projects already underway are not being paid by the State of Illinois. The Prairie Chicken Recovery Project and other wildlife projects are in jeopardy. Conservation and restoration projects that have been in the works for years may now wither away – years of funding and effort could go to waste. If we don’t speak up, who will?

**How to Help:** It’s time for all of us to pick up the phone and start making noise – call Governor Rauner, House Speaker Mike Madigan, Senate President John Cullerton YOUR LEGISLATORS - NOW!! Tell them you want the state funds for the Illinois Dept. of Natural Resources restored in order to protect our parks for wildlife and recreation. Tell them why that is important to you. Tell them to work harder on breaking the budget logjam that is putting the state deeper in the hole of debt.

**CALL OR EMAIL YOUR STATE SENATOR AND REPRESENTATIVE, GOVERNOR RAUNER AND LEGISLATIVE LEADERS - NOW!!!**

**Illinois Legislative Contacts: Call Your Legislators Today!**

State Dist. 109 Rep. David Reis: 618-392-0108 or 217-782-2087; [www.davidreis.org](http://www.davidreis.org)  
State Dist. 115 - Rep. Terri Bryant: 618-242-8115; 217-782-0387; [staterepterribryant@gmail.com](mailto:staterepterribryant@gmail.com)  
State Dist. 116 - Rep. Jerry Costello II - 618-282-7284; 217-782-1018 [Staterepcostello@gmail.com](mailto:Staterepcostello@gmail.com)  
State Dist. 117 - Rep. John Bradley - 618-997-9697; 217-782-1051; [repjohnbradley@mychoice.net](mailto:repjohnbradley@mychoice.net)  
State Rep. 118 - Rep. Brandon Phelps - 618-253-4189; 217-782-5131; [bpphelps118@gmail.com](mailto:bpphelps118@gmail.com)  
Senate Dist. 55 Senator Dale Righter: 217-235-6033 or 217-782-6674  
Senate Dist. 58 - Senator Dave Luechtefeld: 618-243-9014; 217-782-8137; [sendavel@midwest.net](mailto:sendavel@midwest.net)  
Senate Dist. 59 - Senator Gary Forby: 618-439-2504; 217-782-5509; [www.senatorforby.com](http://www.senatorforby.com)  
Governor Bruce Rauner: 217-782-0244, <http://www2.illinois.gov/gov/Pages/ContacttheGovernor.aspx>  
Speaker of the House Madigan: 217-782-5350; 773-581-8000; <http://www.housedem.state.il.us>  
Senate President Cullerton: 217- 782-2728; 773-883-0770; [jcullerton@senatedem.illinois.gov](mailto:jcullerton@senatedem.illinois.gov)

**Congressional Contacts**

Senator Dick Durbin: 618-351-1122; 202-224-2152; [durbin.senate.gov](http://durbin.senate.gov)  
Senator Mark Kirk: 202-224-2854; 312-886-3506; [kirk.senate.gov](http://kirk.senate.gov)  
Representative Mike Bost: 618-457-5787; 202-225-5661; [bost.house.gov](http://bost.house.gov)  
Representative John Shimkus: 618-252-8271; 202-225-5271; [shimkus.house.gov](http://shimkus.house.gov)

## Has Your Email Address Changed?

To continue to receive notification when the latest Shawnee Group newsletter is posted online, be sure to inform the Group when you change your email address. Send email address updates to:  
[dorecyprosser2001@yahoo.com](mailto:dorecyprosser2001@yahoo.com)

At any time you can read current and past newsletters on the Shawnee Group website:  
<http://illinois.sierraclub.org/Shawnee/> Visit the website also for information on upcoming local programs and outings as well as state and national Sierra Club issues.

### Leadership Opportunities

#### **Run for the Board!**

We need a few good women and men.

Join the board of directors (the executive committee, also known as the ExCom) in overseeing the Shawnee Group's strategic direction and economic health. Board members meet monthly for about 2 hours. Board terms are for two years. We are always interested in potential candidates.

#### **We also need:**

##### **\* Hospitality team members**

Provide refreshments for one monthly meeting each year (second Thursday). Be the Hospitality Chair to organize refreshment providers and greeters OR

Act as a greeter for a monthly meeting or welcome and assist our speaker OR

Select and make reservations at a local restaurant for our monthly "Dinner Before the Meeting."

Contact Program Chair Ruth Kelley at (618) 684-2196 or [rth\\_kelley@yahoo.com](mailto:rth_kelley@yahoo.com).



## **VOTE!**

Look for the Illinois Chapter mailing coming soon. Shawnee Group Sierra Club ExCom candidate bios and ballots will be listed in this brochure, *The Prairie State Update*. The voting DEADLINE is DECEMBER 20<sup>th</sup>. Several members are stepping down from board work.

**Please VOTE!**

## **2016 Sierra Club Calendars Available!**

**Buy** at our monthly meetings this fall. Or in the Carbondale area, contact Clara McClure, 618-457-2025. Or contact Barb McKasson ([babitaji@aol.com](mailto:babitaji@aol.com)).

We also seek volunteers to sell calendars.

