



The Rainier Review

Fall 2015

Volume 14, Issue 2

SERVING THE PIERCE COUNTY COMMUNITY AND BEYOND

“Explore, enjoy
and protect
the planet”

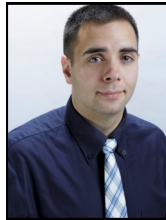
Inside this issue:

Endorsements	1
TPP Trade Agreement	2-3
Ivy League—Join Us	2
Outings Updates	3
Tatoosh Group Excom Elections	5
2016 Calendars are Here!	6

November 3, 2015—Sierra Club General Elections Endorsements and Commentary

Tacoma City Council:

Anders Ibsen, Position 1: Ibsen, is the previously endorsed incumbent and has generally been supportive of our environmental causes. **We again endorse him for this position.** He received nearly 47% of the Primary vote in a three-way race with John Hines and Tara Doyle-Enneking. Ibsen, a Tacoma native, was elected to the Tacoma City Council in 2011. He graduated in 2008 from the Evergreen State College with a Bachelor's Degree in Political Science and Sociology. He has been a solid vote for the environment on Tacoma's Infrastructure, Planning and Sustainability (IPS) Committee. He's voted for more urban density and expansion of Link – Light Rail to the Hilltop area of Tacoma. Recently, he has been promoting his idea to get Tacoma Power to include residential solar panel installation in the “zero interest loan program” available for other energy saving programs.



Ryan Mello, Position 8: Mello is unopposed. He has been a leader on the Council and a champion on the environment. He was co-chair of the Green Ribbon Task Force on Climate Change and primary author of the City's first Climate Action Plan back in 2007-2008. He currently is Executive Director of Conservation Futures of Pierce County and has a proven record on protecting the environment. With this stellar environmental record on the Council and having been previously endorsed by us, **Mello gets a strong endorsement from the Sierra Club.**



Port of Tacoma Commissioner:

Clare Petrich, Position 5: Petrich has been a Port Commissioner for 20 years now and the only commissioner to seriously recognize the importance of dealing with the numerous environmental issues that the port faces. The Club first endorsed incumbent Petrich some 12 years ago. Although all port commissioners put economic development at the top of their priority list, few give much attention to environmental sustainability. Petrich recognizes we must deal with these difficult environmental issues. She was the primary mover in establishing the Sea Port Alliance recently with the Port of Seattle. This agreement to share marine cargo moving will prevent delays in getting freight in and out in an efficient expeditious manner. She is also willing to promote more communication and cooperation with neighboring jurisdictions to facilitate environmental sustainability. **We believe Petrich again deserves our endorsement.** She received 57% of the Primary vote and should easily win this position.



The Ivy League & The Legion of Broom—The Invasive Species Initiative of Tatoosh Group



Clean-up at McKinley Park

For over fifteen years, Tatoosh Group members have removed invasive plants from parks in Tacoma. Under the original moniker of the Ivy League, the group has traditionally focused on removing English ivy from forested areas. Ivy is notorious for smothering the forest floor and preventing native plant communities from thriving. Plus, it eventually kills large trees by climbing and surrounding its limbs, causing them to become susceptible to blowdown. Ivy League has already removed large expanses of ivy from Point Defiance Park and Snake Lake Nature Preserve. Our group is now in the process of expanding our presence to other areas of Tacoma and Pierce County. In addition to conducting follow-up visits at previous infestation sites, Ivy League is now in the process of removing ivy in McKinley Park with stewardship provided by Jori Adkins. Prior to our involvement, Jori and others who have been familiar with the park over the years have witnessed an amazing renaissance in its condition. Tatoosh group members are taking the opportunity to help this rebirth come to full fruition by clearing ivy-infested areas for native plantings. We have also begun removing Scotch broom and invasive blackberry species at Parkland Prairie, with stewardship provided by Brett Johnson. Out on the prairie, we morph into the Legion of Broom! Parkland Prairie features a revitalized channel for Clover Creek with recently planted native species and mounds reminiscent of the Mima Mounds south of Olympia. Scotch broom has grown so thick in some places, it has overtaken both native prairie plants and riparian vegetation along the creek bed. We aim to gradually remove the Scotch broom using "weed wrenches" provided by Pierce County Parks to facilitate the restoration of the prairie. *(continued on page 4)*

Trans-Pacific Partnership Trade Agreement (TPP) – A Disaster for the Environment

The **Trans-Pacific Partnership** is an expansive free trade agreement encompassing 12 nations--Australia, Brunei, Canada, Chile, Japan, Malaysia, Mexico, New Zealand, Peru, Singapore, and Vietnam--representing nearly 40% of the world's economy, with other countries allowed to join over time. Negotiations and documents are being kept in extreme secrecy, with corporate input drowning out that of the public, which has yet to be allowed to see any drafts or texts of the treaty. **We do know that the TPP includes provisions that give a corporation the right to sue a government--in private, secret trade tribunals--over nearly any law or policy that it alleges will reduce its profits.** Using similar rules in other free trade agreements, corporations such as Exxon Mobil and Dow Chemical have launched nearly 600 cases against nearly 100 governments. Dozens of cases attack common-sense environmental laws and regulations, such as regulations to protect communities and the environment from harmful chemicals or mining practices. [Read more here](#) about how harmful investment rules included in other trade pacts have led to the attack of climate and environmental policies.

We also know that the TPP would require automatic approval on all natural gas exports to other countries in the partnership, inevitably leading to an increase in [hydraulic fracturing](#) ("fracking") in the US, the dirty and violent process that dislodges gas deposits from shale rock formations. As well, a joint [analysis](#) by Sierra Club, Natural Resources Defense Council (NRDC) and World Wildlife Fund (WWF) found the environment chapter of the TPP ([published](#) by WikiLeaks earlier this year) severely lacking in environmental protection policies and regulations; in fact, the TPP could lead to increased stress on natural resources and species including trees, fish, and wildlife.

The Republican-controlled Senate and House passed a [fast-track bill](#) back in late June, by the close call votes of **60-38** and **218 to 208**, respectively. This piece of legislation, also known as **Trade Promotion Authority**, has allowed **President Obama's administration to negotiate the Trans-Pacific Partnership (TPP) and present it as a finished, packaged deal to Congress, which will give a simple yes-or-no vote without being allowed to amend it.**

Although TPP proponents hoped that Fast Track would expedite the passage of TPP, things aren't looking that smooth. From July 28 through 31, the U.S. hosted a round of TPP negotiations in Hawaii, with the intent of wrapping up a complete deal. Instead, a host of new issues (including disagreements over dairy and auto trade, as well as issues of enforcement) resulted in gridlock and the [failure of the parties to reach an agreement.](#) *(continued on page 3)*

TPP, continued from page 2

Internationally, meanwhile, many other TPP countries are concerned about the deal's ability to be sealed in a timely manner, especially after negotiators failed to reach a deal in Hawaii with Canadian elections looming, and with countries still disagreeing on several big issues.

This time crunch has motivated American TPP negotiators all the more to get the agreement passed as soon as possible-- a senior White House official was recently quoted saying, "the negotiators have gotten very close to the end. We are committed to completing the negotiations. We expect that will happen in the next several weeks." With Congress' recent return and the possible conclusion of the agreement soon, it remains more important than ever to continue our efforts to convince members of Congress to oppose the TPP.

On Oct 5, the US and 11 Pacific Rim nations reached agreement on the TPP. **But this isn't a done deal!** Today's agreement sets up a likely showdown in Congress early next year. **This is a vote we can win -- but only if Congress starts hearing from us now.**

Consider contacting your members of Congress urging them to oppose the TPP or [writing a letter to the editor](#) of your local paper.

Outings – Yes you can get out in the weather!

Sigh, we are past our prime time for hiking. We had a great group of hikers and fun times this summer, but here are a few chances to get out in the dark season. All outings are subject to change depending on conditions so **be sure to sign up** with the hike leader to be in the loop. Contact dorothyw@centurylink.net or 253.265.6059 for more info and to sign up.

Although these outings are pretty urban, dress for the weather (Don't skimp; put that rain gear in your pack.). Wear boots or sturdy shoes, bring hat, gloves, water and lunch.

Fri, Nov 6, 2015 - Washington Pack Forest Hugo Peak – Round trip about 4.5 miles, elevation gain 880' Only 10 minutes from Eatonville, the trail is well maintained. Accessible year-round, this is an all-weather, year-round hike. Climb 800 feet in about two and a quarter miles, being aware of the low spots that can get muddy in the winter, despite the boardwalks through these areas. Most of the hike is through forest and a previously logged out area that offers a nice view. With several sections of step-ups, the trail is a good workout.

<http://www.wta.org/go-hiking/hikes/pack-forest-hugo-peak?searchterm=pack+forest>

Wed, Jan 13, 2015 Nisqually Wildlife Refuge – Round trip about 5 miles, flat. This is always fun with plenty of wildlife to see. If you haven't been you should go. The old dikes have been removed to restore the delta and a mile long boardwalk extends across the wetlands. Bring your binoculars.

Sat, Apr 2, 2015 – Tour Morse Wildlife Preserve and Maxine G. Morse Nature Conservancy – Loops totaling 4 miles. MWP has 100+ acres of prairie, oak woods and savanna, Muck Creek and wetlands, dry Douglas-fir forest and mixed coniferous forests. There are two miles of well-maintained trails including a 700 ft.-long boardwalk across wetlands, a birding tower that overlooks a palustrine wetland, and amenities like a porta-potty, a couple of picnic tables, and kiosks with educational information. The Maxine G. Morse Nature Conservancy is a few miles away with 50 acres of forest with about two miles of trails.

For the latest on outings check our web site. **Tatoosh Group Outings are listed here:** <http://sierraclub.org/washington/tatoosh-outings>

All Washington State Chapter Outings are available to you. Washington State Chapter Outings are listed here: <http://sierraclub.org/washington/club-outings>

The Ivy League and Legion of Broom News (continued from page 3)



This season, we visited our follow-up sites many times ~ Parkland Prairie twice, and McKinley Park three times. Each work party lasted about 3 hours on one Saturday morning per month. During each visit, we removed a lot of invasive plant material and we readily see the progress we've made. If we maintain this level of commitment over the next 10 or more years, we will accomplish our overall objectives. And, we are not in this fight alone-- other volunteers work in these areas, from caring, committed neighbors to students from nearby schools. We encourage our members to get involved in removing invasive species and restoring our native plant communities. There's lots of work to do, and who better to get the job done than Sierra Club? Our mission statement calls us "to educate and enlist humanity to protect and restore the

Clean-up at Point Defiance quality of the natural and human environment." Let's get out there and fulfill our mission! If you would like to become an active member of the Ivy League or the Legion of Broom, please contact Brett Johnson: bmjohnson75@hotmail.com, or call/text 253-448-5050.

Tentative Attack Plan 2016: Morse Wildlife Preserve (April 2nd) see Outings; Parkland Prairie (April 23rd & May 21st); McKinley Park Jun/Jul/Aug; Pt. Defiance in Oct.

Here's a link to comprehensive list of Pierce County stewardship events for the fall:
<http://www.tahomatreebeard.com/take-action-this-fall/>

Summer Outings Photos



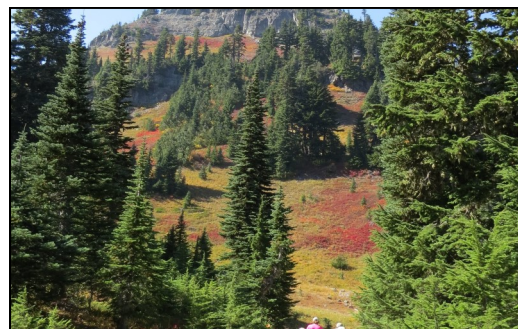
Mt Fremont Lookout 8/21, photo credit Dorothy Walker



Naches Loop 9/20, photo credit Lena Gibson



Sourdough gap hike 7/22, photo credit Dorothy Walker



Naches Loop 9/20, photo credit: Colleen Scovill

Meet the Candidates for Tatoosh Group Executive Committee

Ken Campbell

I am a 30-year Tacoma resident, husband, father, writer and educator. My primary outdoor pursuits are sea kayaking and standup paddleboarding, but I have also spent years here in the Washington backcountry, climbing, skiing, and canoeing. Following the Japanese tsunami in 2011, I became aware of the issue of marine debris and turned my efforts toward understanding the effects of plastic in our oceans and on the beaches here in the Pacific Northwest. I started the Ikkatsu Project in 2012 and have focused on marine plastics research and surveys, using film and writing to help raise awareness about the issue. I have previously served two terms on the board of the Washington Water Trails Association and have been on the executive council of the South Sound Chapter of the Surfrider Foundation for the past four years. I have also served one term on the Sustainable Tacoma Commission and have been on the Tatoosh group's Political Committee for the past two years. I live on Salmon Beach in the Tacoma Narrows – Tacoma's quietest neighborhood – with my wife and nine year-old son.

Laura Hendricks

I have worked with wild animals since childhood and always loved the outdoors. Over the last few years I have worked with Sierra Club on shoreline issues and the protection of our native aquatic species. It has been a pleasure to serve on the Tatoosh Group ExCom as we try to engage other activists in our area to work on issues that they are passionate about.

Dorothy Walker

I have been a member of the Tatoosh Group Executive Committee for five years and am the current chair. I serve on the political committee, do computer related tasks for the group and am an outings leader. I live in the Gig Harbor area of Pierce Co. I love spending time in the great outdoors, hiking or skiing whenever I get the chance. I believe very strongly that we need to be protecting and preserving our environment and choose to participate in the Sierra Club because of its track record of effective advocacy for the environment.

Voting Instructions

Three interested and qualified candidates have applied for the three open Executive Committee positions. According to our by-laws it is necessary to hold an election. Under "Member-Voter", please mark your ballot with an "X" for up to three candidates. If you have a dual membership (e.g., wife & husband), the second party of the dual membership should mark the ballot for up to three candidates under "2nd Member-Voter". Then, **cut off the ballot and mail it to Shirley Moore at 6116 N Park Ave, Tacoma, WA 98407 by December 15, 2015. If you receive an e-newsletter, you can vote by printing and mailing the ballot or by attaching it to an email. Please email shirleygmoore@yahoo.com.** Thank you for your participation.

✂

TATOOSH GROUP EXECUTIVE COMMITTEE ELECTION BALLOT

Vote for up to three candidates. If you have a dual membership (e.g., wife & husband), the second party of the dual membership should mark the ballot for three candidates under "2nd Member-Voter".

<p>Member-Voter</p> <p>Ken Campbell <input type="checkbox"/></p> <p>Laura Hendricks <input type="checkbox"/></p> <p>Dorothy Walker <input type="checkbox"/></p>	<p>2nd Member-Voter (dual membership households only)</p> <p>Ken Campbell <input type="checkbox"/></p> <p>Laura Hendricks <input type="checkbox"/></p> <p>Dorothy Walker <input type="checkbox"/></p>
--	--

When complete, cut off the ballot and mail it to: Shirley Moore at 6116 N Park Ave, Tacoma, WA 98407 by December 15, 2015. If you receive an e-newsletter, you can vote by printing and mailing the ballot or by attaching it to an email. Please email shirleygmoore@yahoo.com. Thank you for your participation.

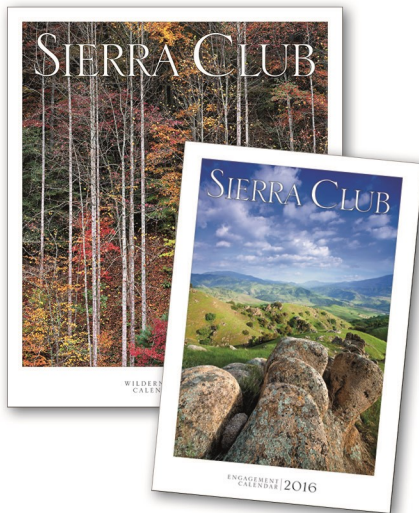


Sierra Club—Pacific NW
Chapter
180 Nickerson St, #202
Seattle, WA 98109-1631

Want to Join Us on one of our
upcoming outings? Contact
Dorothy Walker
at
dorothyw@centurylink.net
for more information.

NON PROFIT ORG
US POSTAGE
PAID
TACOMA, WA
PERMIT NO. 1347

2016 Sierra Club Calendars



Buy from us and support
local conservation work!

2016 Sierra Club Calendars Are Here!

These calendars with their inspiring color photographs have been among the most popular nature calendars sold for the past 30 years. The annual calendar sale is the Tatoosh Group's major fundraiser, with proceeds helping to pay for our environmental and conservation activities.

These spiral-bound calendars now come in recyclable shrink wrap and make great holiday gifts.

Wilderness (Wall) Calendars are \$14 each, measure 13 1/2" by 11 15/16", with a large North American wilderness photo for each month and boxes below for writing.

Engagement (Desk) Calendars are \$15 each, measure 9 1/4" X 6 5/16", feature 57 color photos of wild animals, plants or scenes and week-at-a-glance spaces for writing.

Combinations of 3 or more calendars are \$13 each

To purchase calendars and arrange for pick up or delivery, please contact:

Shirley Moore at 253-752-6472 or shirleygmoore@yahoo.com

Torun Parker at 253-759-7830 or TSPARKE@AOL.COM