



SIERRA CLUB



Lunz Letter

May 2026

Fighting Creatively Against the Edisto Gas Plant & Pipeline



Belvin Olasov

Charleston Climate Coalition

Thursday, May 7

7:00pm

Different location this month

In person:

Riley Center at College of Charleston WestEdge
176 Lockwood Drive, Room 206
(across from Brittlebank Park)

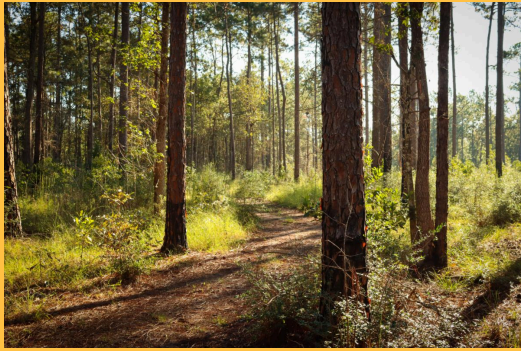
Online via Zoom: [Register Here](#)

A link to join the live meeting will be sent by email.

Belvin Olasov, Co-Founder and Director of the Charleston Climate Coalition, will talk about Dominion Energy's plans to build a large gas plant in Canadys along with a pipeline through the heart of the ACE Basin to fuel it. The presentation will provide background on the issue, the creative actions and storytelling being used to oppose it, and how Lowcountry residents can join in the fight to prevent the plant's construction.

Share this with friends on [Facebook](#) and [Meetup](#).

Join an Upcoming Outing!



Pitcher Plant Hike in the Francis Marion

Saturday, May 2

Event leader: Amanda Voges

This a 3-4 mile hike through the Palmetto Trail Swamp Fox Passage in the Francis Marion National Forest. We'll meet at the Halfway Creek Trailhead and hike through longleaf pine forests to some Carolina Bay wetlands full of yellow pitcher plants!

[Learn More](#)



Kayak Cleanup along Shem Creek

Saturday, June 13

Event leader: Amanda Voges

Join us to help clean up marsh areas along Shem Creek in Mount Pleasant. These clean up efforts reduce debris and microplastics from entering our waterways and ocean.

Cleanup supplies will be provided but people are responsible for bringing their own kayak.

[Learn More](#)

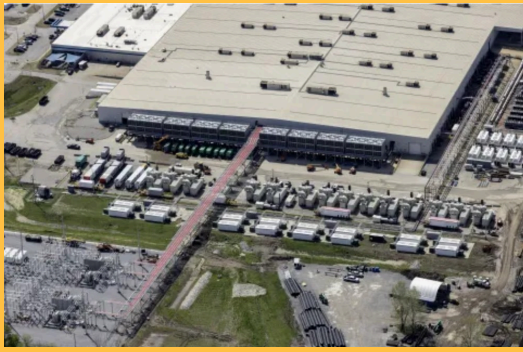
URGENT: Tell SC Senate to Reject \$400 Electric Car Tax

South Carolina lawmakers are scheduled to vote this week on legislation that would significantly increase costs for electric vehicle (EV) drivers. The proposal, [S. 831](#), would raise the state's biennial EV tax from \$120 to \$400. That tax increase is also included in [H. 5071](#), which further imposes a new 4.5-cent-per-kilowatt-hour tax on electricity sold at publicly accessible EV charging stations.



[Learn More](#)

[Give Feedback to Legislature](#)



Recent Program

Protecting South Carolina's Environment in the Digital Age

The April program featured Susie Carlson & Robby Maynor of the Southern Environmental Law Center speaking about the rising trend of data centers in South Carolina and across the Southeast.

[Watch Recording](#)



Save the Date

Film Screening:

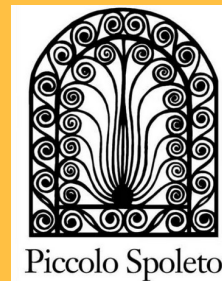
Leaning into the Wind

Thursday, June 4

Our June program will feature this documentary film about Scottish landscape artist Andy Goldsworthy's exploration of the ecology, design, and beauty of natural elements.

[Learn more](#)

This film is co-presented with the Piccolo Spoleto Festival.





CHS GREEN DRINKS SOCIAL



It's open mic night! EVERYONE is invited! Local organizations, businesses, community members - all are welcome to share stories, successes, upcoming events, etc.



MAY 14 , 2026

6:00 - 8:00 PM

Commonhouse Aleworks
4831 O'Hear Ave

[Learn More](#)



FRIENDS OF COASTAL SOUTH CAROLINA

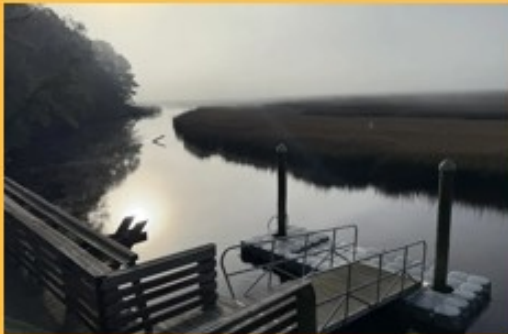
SUPPORTING OUR
NATIONAL FOREST AND WILDLIFE REFUGES
Founded in 1996 as SEWEE Association

Friends of Coastal South Carolina has an immediate opening for a full-time, experienced educator to oversee our science learning and environmental stewardship programs. Friends of Coastal South Carolina is a nonprofit organization dedicated to conserving the Lowcountry's natural landscapes, protecting wildlife habitat, and promoting sustainable land-use practices through advocacy and education. For more information about our programs, organization, and how to apply, please see our website at www.sccoastalfriends.org



Outings Highlight:

March Day Hike along the Awendaw Passage of Palmetto Trail



Pick up Your Lunz Group T-Shirt!

The new shirts are in, and now's your chance to sport a Lunz Group Pelican T-shirt. Make a fashion statement and show your support for conservation in the Lowcountry! Shirts are \$25 each, and a selection of sizes will be available at upcoming member meetings.



Thank You to our 2026 Oyster Roast Donors!

Alec Cooley
Amanda Voges
[Audubon Center at Francis Beidler Forest](#)
[Basic Kitchen](#)
[Bowen's Island Restaurant](#)
[Charleston Coffee Roasters](#)
[Charleston County Parks and Recreation](#)
Christine von Kolnitz

[Lime and the Coconuts](#)
[Lowcountry Street Grocery](#)
[Maike Handmade Pottery](#)
Maria Richardson
[Mary Edna Fraser](#)
[Native Plants to the People](#)
[Nature Adventures](#)
[Palmetto Pottery](#)
Pat Luck

[Coastal Expeditions](#)
[College of Charleston Sailing](#)

David Mikell

[Eugene Platt](#)

[Fast & French](#)

Georgia Roane

[GlassEco Surfaces](#)

[Halsey Institute of Contemporary Art](#)

[J. Henry Fair Photography](#)

[John Moore](#)

Laura Moses

[Laura Palermo, Sandpiper Gallery](#)

[PURE Theatre](#)

Robert Pougner

[Roots and Shoots Nursery](#)

[Ruth Miller](#)

[SC Dept. of Parks, Recreation & Tourism](#)

[SC Native Plant Society](#)

Teri Lynn Herbert

[Time Out Sports](#)

[Wake Refill](#)

[Warby Parker](#)

[Ye Ole Fashioned Ice Cream](#)

Stream recordings for all recent programs on
the [Lunz Group YouTube channel](#).

Follow the Robert Lunz Group on Social Media



Sierra Club Robert Lunz Group South Carolina Chapter | P.O. Box 31502 | Charleston, SC 29417 US

[Unsubscribe](#) | [Update Profile](#) | [Constant Contact Data Notice](#)



Try email marketing for free today!