



# PARKS PASS COVER INSTRUCTIONS

Print one of the following pages on normal printer paper and follow the instructions below or in the video found here:

<https://www.youtube.com/shorts/n6XITQP64Lg>



**CUT** along all blue dotted lines

**PRE FOLD & CREASE** all green solid lines - use your fingernail or a card to pre-crease a strong edge



**# 1-5** Fold back, be sure to crease the edges as you fold

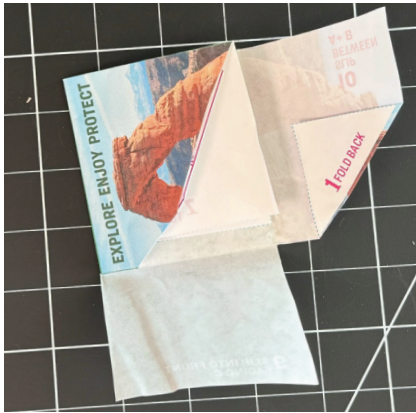


**# 6** Fold back C, making A+B face each other

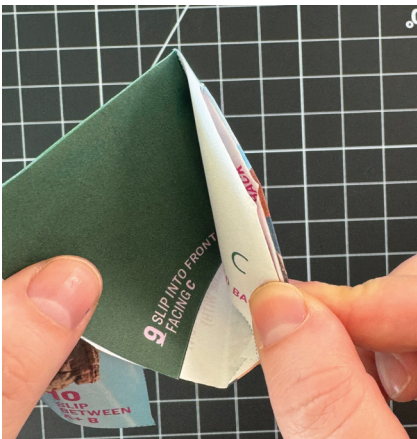
Instructions continued on next page



**# 7** Fold back D+E, covering C



**# 8** Fold D in to face E (bringing C and the front image in with it )






**#9** Fold down towards the front, slipping it in between D and C, green side should face C.

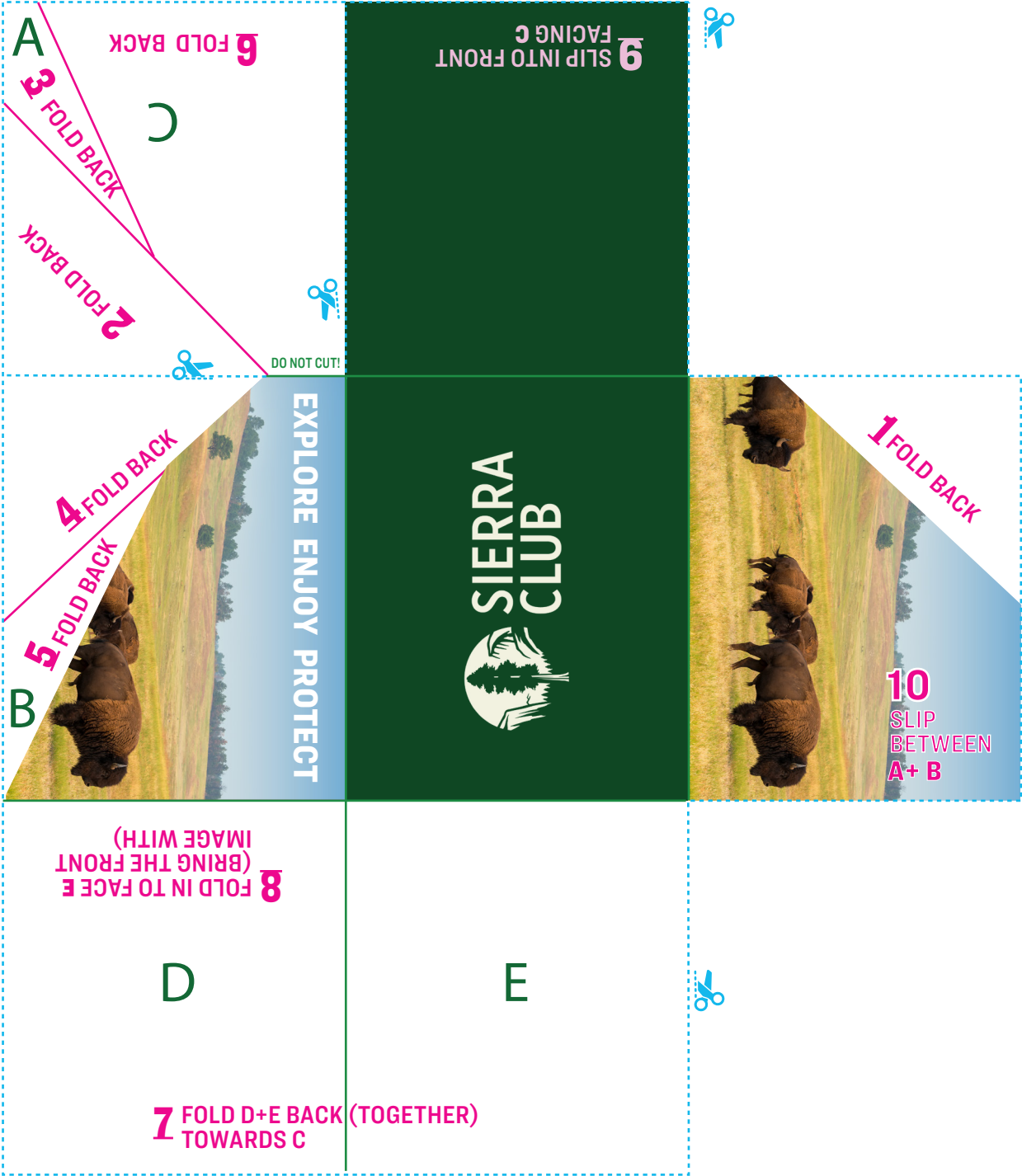


**#10** Fold in between A and B, lining up the front image.

**You did it! Those last two steps were tricky, good job! Now slip your parks pass on there and get out to the trails!**

# START HERE

-  CUT BLUE DOTTED LINES
-  PRE FOLD ALL GREEN SOLID LINES - USE YOUR FINGERNAIL OR A CARD TO PRE-CREASE THE EDGE
-  UNFOLD AND FOLLOW NUMBERED STEPS OUTLINED ON PRINT.

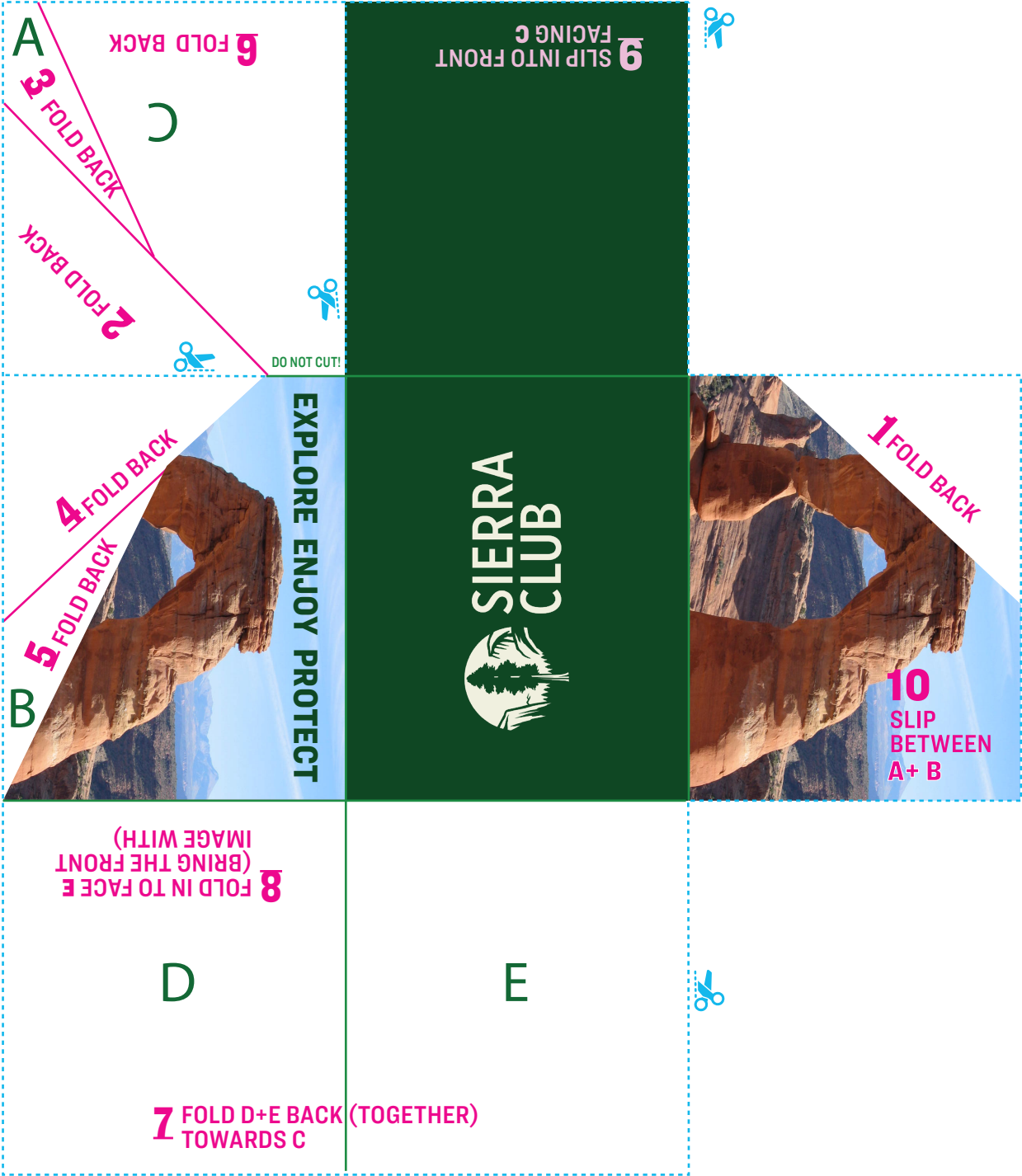


# START HERE

..... CUT BLUE DOTTED LINES

———— PRE FOLD ALL GREEN SOLID LINES - USE YOUR FINGERNAIL OR THE EDGE OF YOUR PARKS PASS TO PRE-CREASE THE EDGE

# UNFOLD AND FOLLOW NUMBERED STEPS OUTLINED ON PRINT.



# START HERE

..... CUT BLUE DOTTED LINES

———— PRE FOLD ALL GREEN SOLID LINES - USE YOUR FINGERNAIL OR THE EDGE OF YOUR PARKS PASS TO PRE-CREASE THE EDGE

# UNFOLD AND FOLLOW NUMBERED STEPS OUTLINED ON PRINT.

**A** 1 FOLD BACK  
2 FOLD BACK  
3 FOLD BACK

**9** SLIP INTO FRONT FACING C

DO NOT CUT!

**B** 4 FOLD BACK  
5 FOLD BACK

**SIERRA CLUB**

1 FOLD BACK

**10** SLIP BETWEEN A+ B

**D** 8 FOLD IN TO FACE E (BRING THE FRONT IMAGE WITH)

**E** 7 FOLD D+E BACK (TOGETHER) TOWARDS C