



# Remediation Consulting Contract

Jeffrey D. Wingfield  
Director of Environmental & Public Affairs





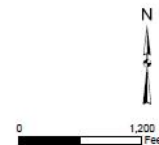
# Remediation Sites



**Legend**

- Restricted Monitoring Well
- ▨ Potentially Restricted Areas and/or Investigation Pending per DTSC request
- ▨ Remedial Sites
- Buildings
- ▨ Closed with LUCs pending/TBD
- ▨ Closed with no LUCs
- ▨ Navy Investigation Site
- Roads
- Parcel Boundaries<sup>1</sup>
- × Fence

Notes:  
 All locations are approximate.  
<sup>1</sup> Adapted from Finding of Suitability for Early Transfer, NAVFAC, 2009.  
 LUCs = Land Use Covenants  
 TBD = To be determined



**Restricted Areas  
Based on Environmental Conditions**

Port of Stockton, Rough & Ready Island  
Stockton, California

<b>PORT OF STOCKTON</b>	<b>Figure X</b>
Stockton	November 2020

# Background



## 52 Contamination Sites including:

Petroleum Hydrocarbons

Volatile Organic Compounds

Semi-Volatile Organic Compounds

Pesticides

Polychlorinated Biphenyls (PCBs)

Dioxins/Furans

Metals (arsenic, lead, zinc, cadmium)



# Remediation Sites

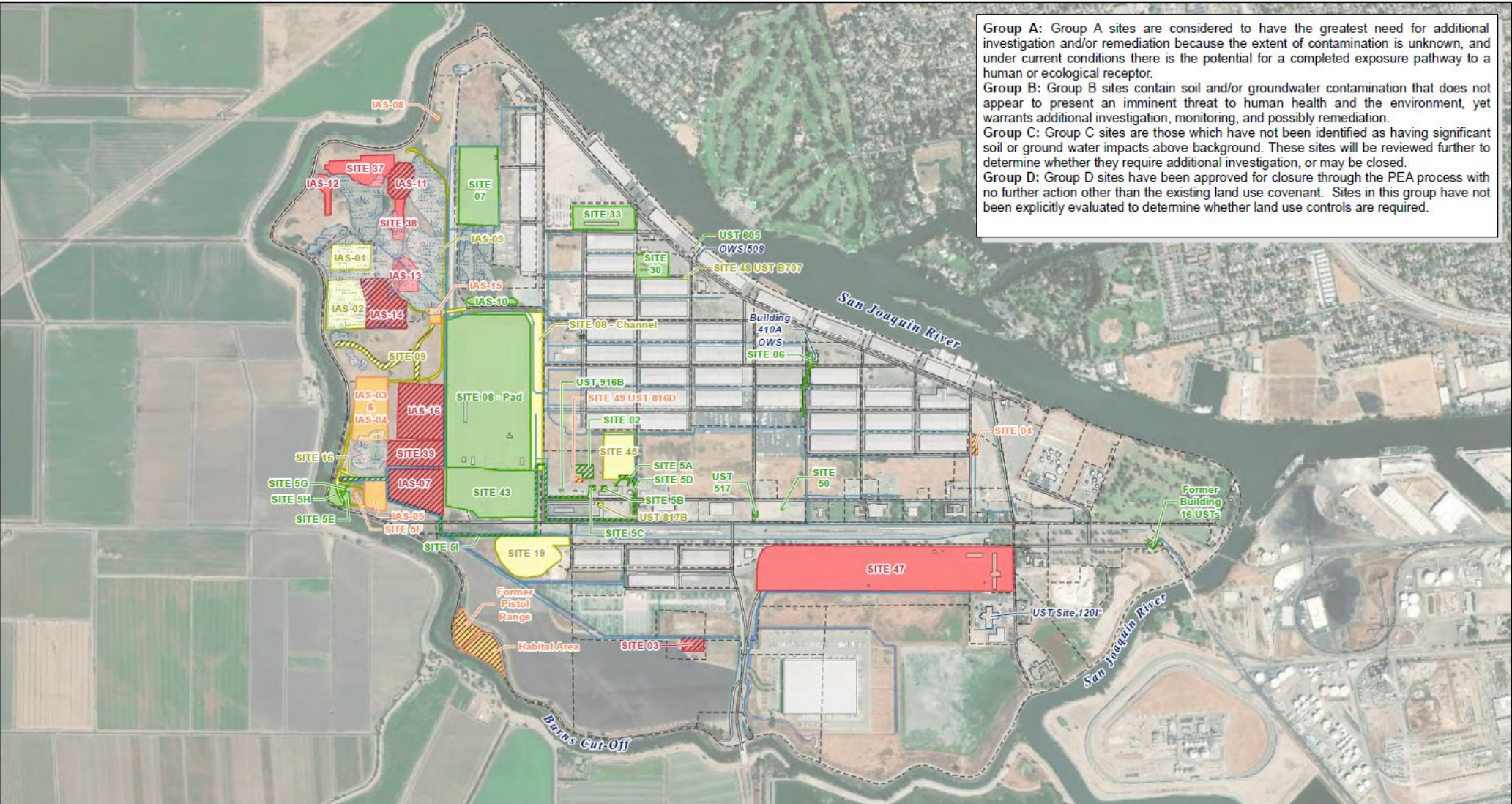


**Group A:** Group A sites are considered to have the greatest need for additional investigation and/or remediation because the extent of contamination is unknown, and under current conditions there is the potential for a completed exposure pathway to a human or ecological receptor.

**Group B:** Group B sites contain soil and/or groundwater contamination that does not appear to present an imminent threat to human health and the environment, yet warrants additional investigation, monitoring, and possibly remediation.

**Group C:** Group C sites are those which have not been identified as having significant soil or ground water impacts above background. These sites will be reviewed further to determine whether they require additional investigation, or may be closed.

**Group D:** Group D sites have been approved for closure through the PEA process with no further action other than the existing land use covenant. Sites in this group have not been explicitly evaluated to determine whether land use controls are required.



**Legend**

**Remedial Sites - Priority Groups**

- Group A
- Group B
- Group C
- Group D
- Navy Retained Conditions

**Groundwater Impacted Sites**

- Jurisdictional Wetlands/Waters
- Buildings
- Drainage Channel
- Roads
- Parcel Boundary

**Notes:**  
 All locations are approximate.  
 Sites bolded and italicized represent UST and/or OWS Sites.  
 UST = Underground Storage Tank  
 OWS = Oil Water Separator  
 \* = The Port has no information on UST1201. UST1201 is estimated to be located at building #120.



**Remediation Program Sites**

Port of Stockton, Rough & Ready Island  
Stockton, California

**Geosyntec**  
consultants

**Figure**  
1

# Staff Opinion and Recommendation



## RECOMMENDATION

Authorize the Port Director to execute a contract with Geosyntec Consultants for an amount not to exceed \$1,241,000.



# Questions

**Jeffrey D. Wingfield**

Director, Environmental & Public Affairs