



# State of the Port 2020

---



**01.** Year in Review

**02.** Situation Analysis

**03.** Maritime Operations

**04.** Real Estate

**05.** Environmental

**06.** Infrastructure



## Year in Review/ Key Priorities

---



- Innovation
- Green Fleet
- Green Marine Certification
- Habitat Restoration
- New Business



## Challenges & Opportunities

---

### **Challenges**

International Tariffs

Traffic

Infrastructure Needs

Climate Change

### **Opportunities**

Lessees

Environmental Restoration

Green Fleet

Strong Community Partnerships

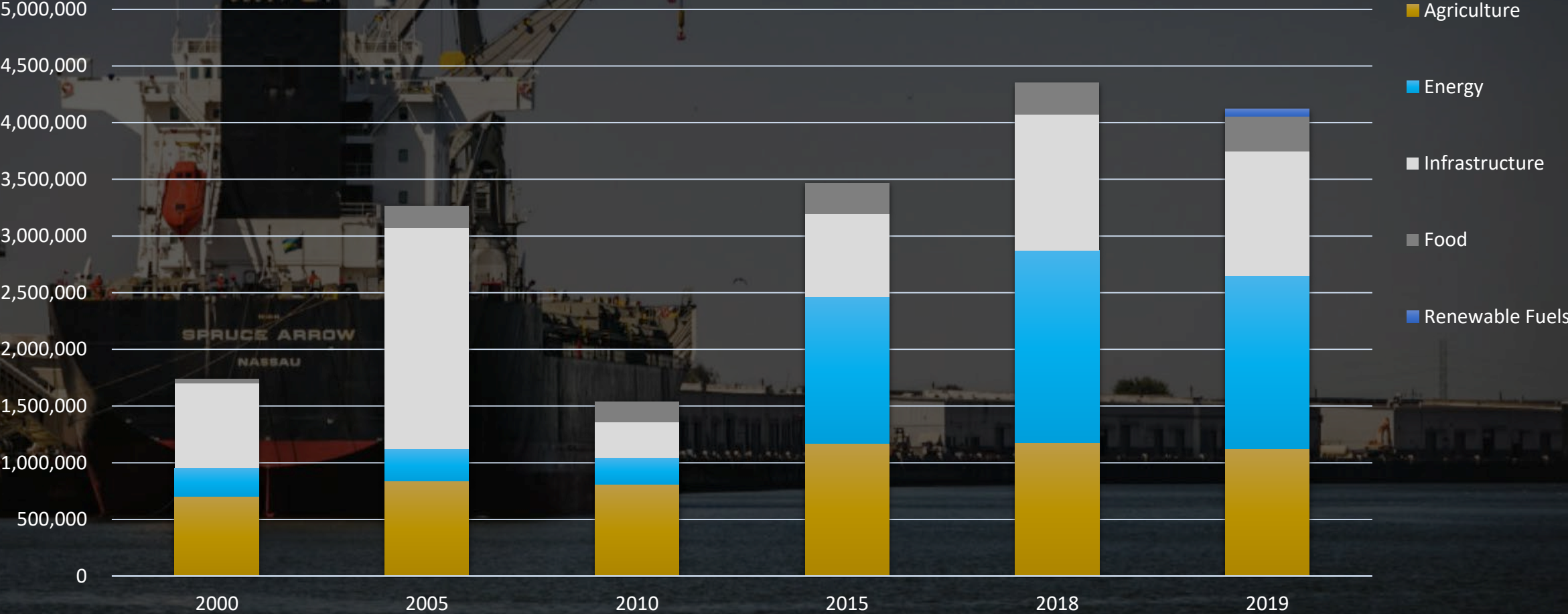
# Maritime

---



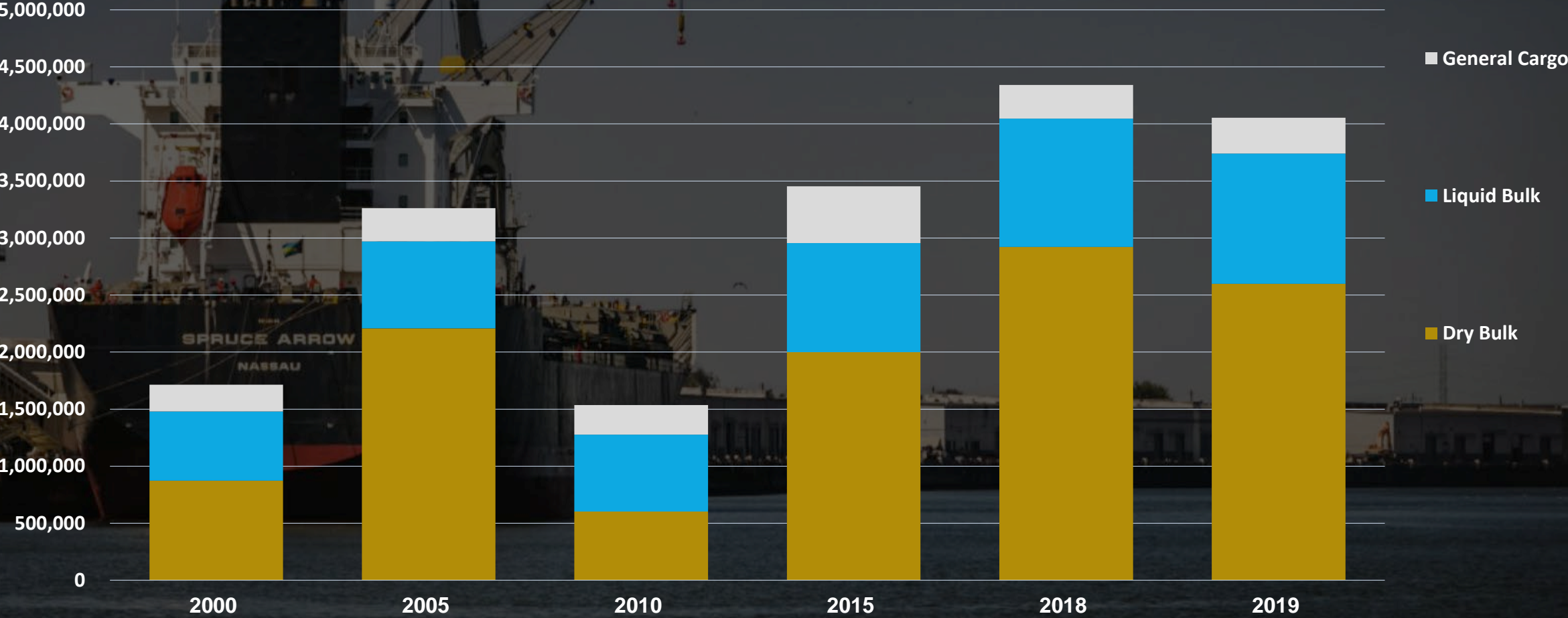
# Maritime Operations

Tonnage Performance  
Tonnage review by commodity sector, CY 2000 – 2019

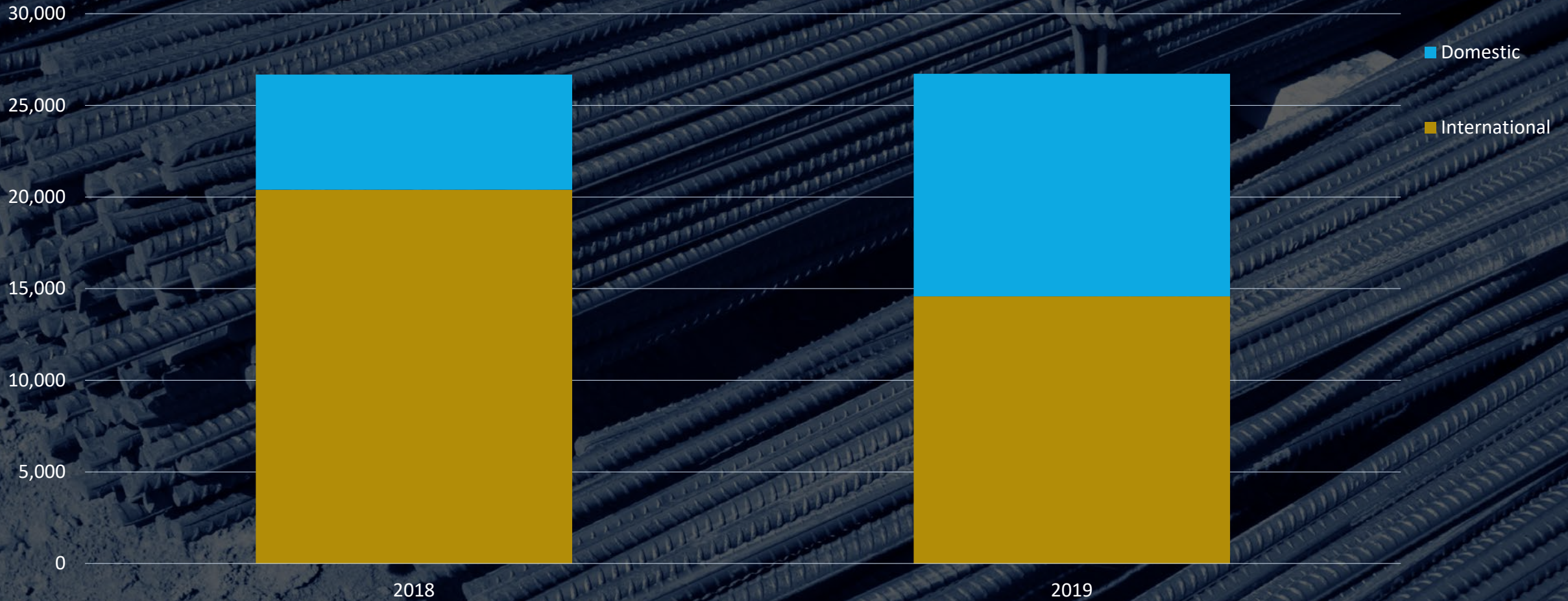


# Maritime Operations

Commodity Type



# Rebar Tonnage

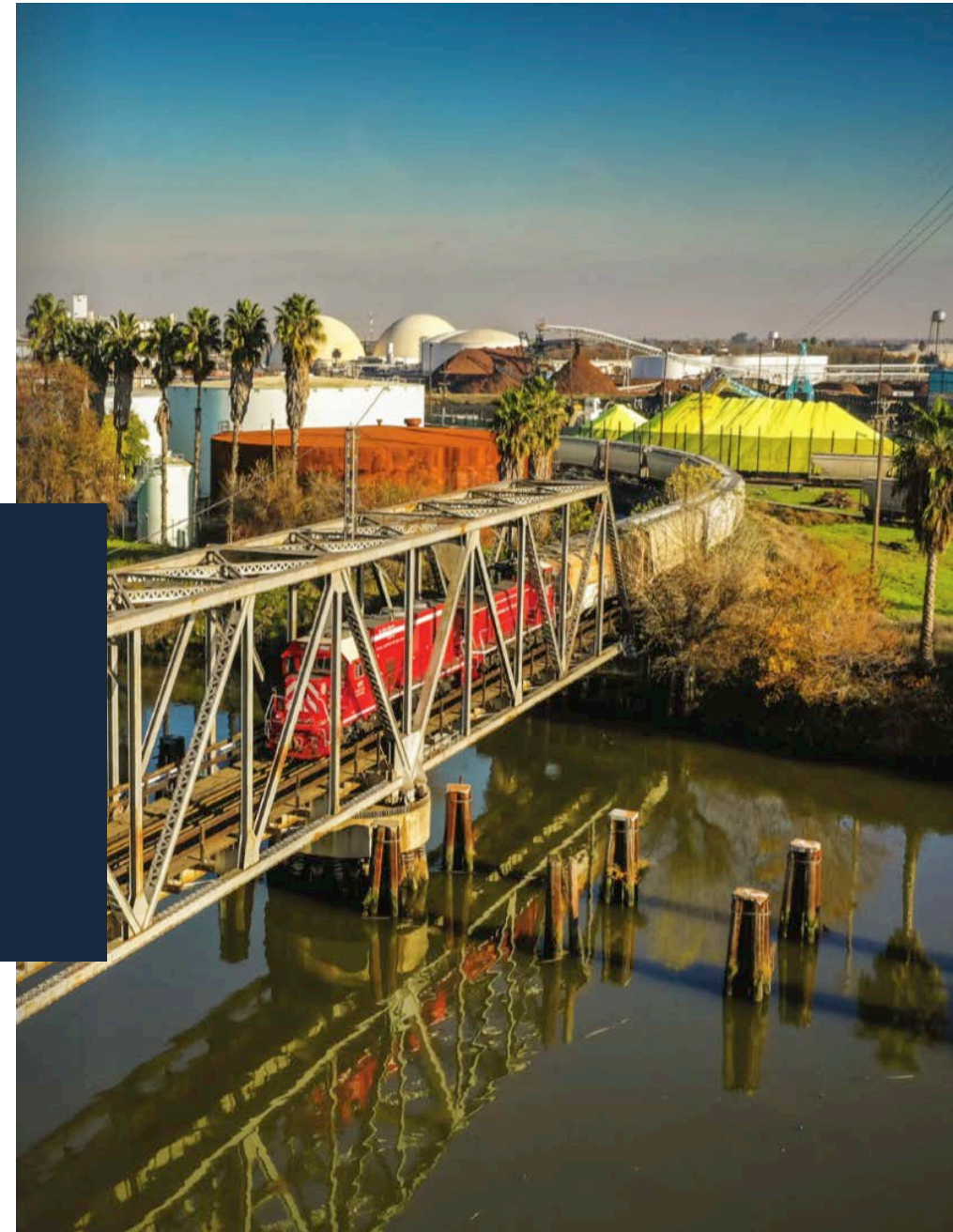




# Marketing & Operations Update

## Shifted marketing platform focus

- Decreased print ads
- Increased in-person outreach



# Marketing

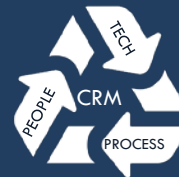
## Marketing Platform Focus

- Customer Contact – Trade Shows, Industry Conferences, Customer Visits

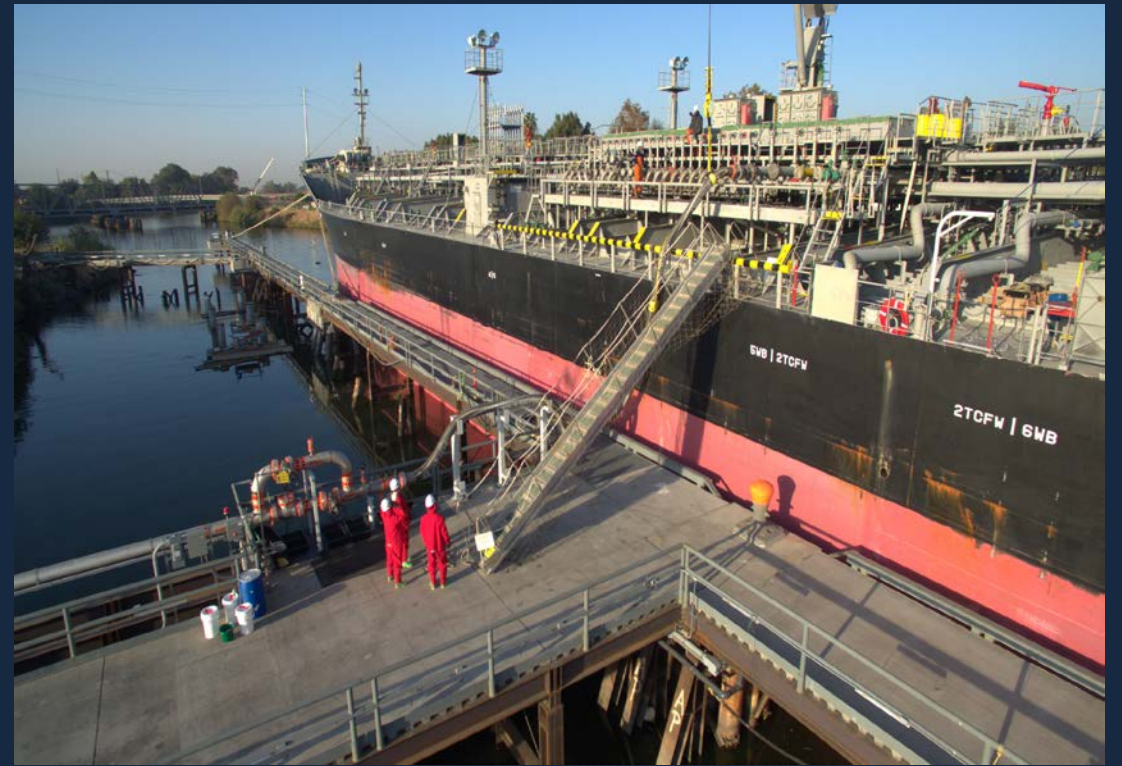
## Customer Engagement in Target Markets

- Renewable Fuels
- Minerals
- Cementitious Products

## Customer Relationship Management (CMT)



# New Business



# Real Estate

---

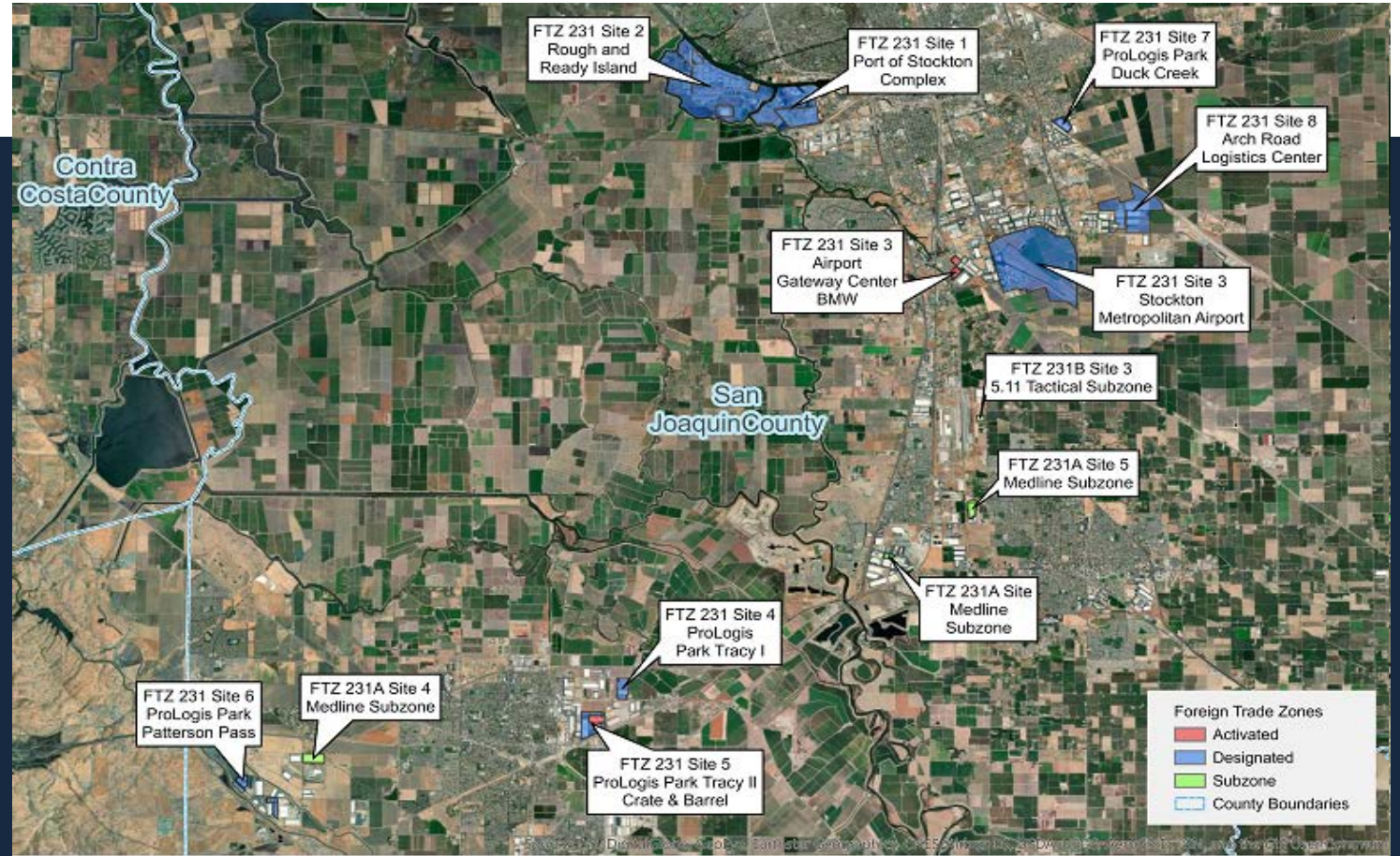


# Foreign Trade Zone #231 Sites

5.11 Inc. boundary modification for Manteca Subzone

- Lathrop & Modesto sites have been deactivated

9 sites designated, 4 locations activated



# 2019 Proposed New/Expansion Projects

Value of Projects \$360 million; 266 FT jobs



Warehouse  
Occupancy –  
100%



# 2019 Approved Projects\*

Projects Under Construction

Project Start-Ups

Value of Projects \$230 million; 116 FT jobs





# Utilities - Electric

PG&E infrastructure upgrades complete

# Utilities - Cal Water

Main waterline replacement along Washington St.

- Future hydrant connections installed



Environmental

---



# Environmental Planning

Zero-emission cargo handling equipment  
transition program

**DANNAR Zero-Emission Forklifts**

**ZANZEFF Project**

**Railcar Mover**



# Environmental Planning (cont.)

## Antioch Dunes Conservation Project



ANCHOR  
GEA

Figure 3  
Restoration Plan  
Eastern South Citch Stormwater Enhancement Project  
Port of Stockton



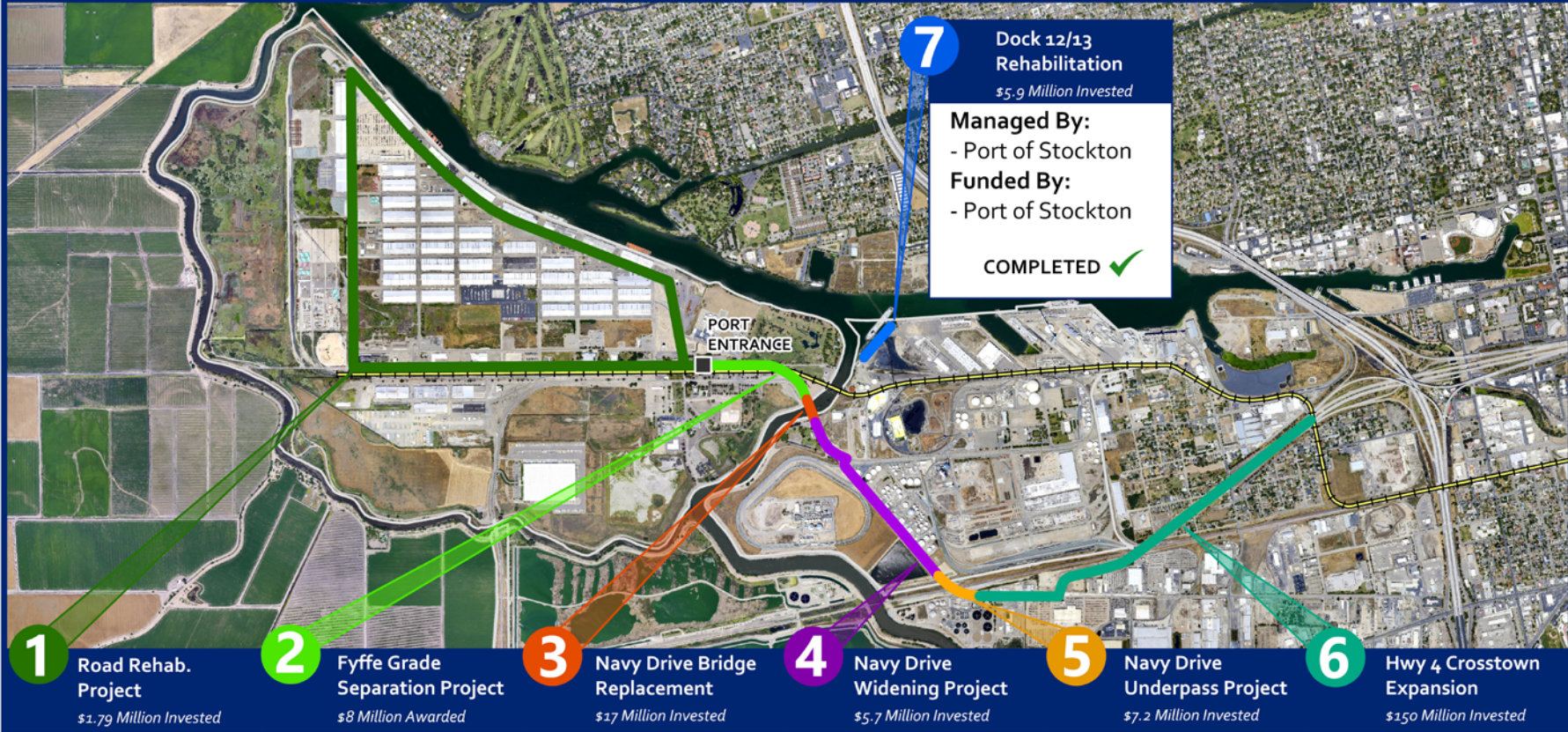
# Infrastructure

---



# PORT ACCESS IMPROVEMENTS

## Transportation Infrastructure Improvement Projects



<p><b>Managed By:</b> - Port of Stockton</p> <p><b>Funded By:</b> - Port of Stockton</p> <p>COMPLETED ✓</p>	<p><b>Managed By:</b> - Port of Stockton</p> <p><b>Funded By:</b> - Port of Stockton - Department of Transportation</p> <p>TO BEGIN JUNE 2020</p>	<p><b>Managed By:</b> - CalTRANS</p> <p><b>Funded By:</b> - CalTRANS</p> <p>COMPLETED ✓</p>	<p><b>Managed By:</b> - Port of Stockton</p> <p><b>Funded By:</b> - Port of Stockton - CA Trade Corridor Improvement Fund - EDA</p> <p>COMPLETED ✓</p>	<p><b>Managed By:</b> - Port of Stockton</p> <p><b>Funded By:</b> - San Joaquin County</p> <p>COMPLETED ✓</p>	<p><b>Managed By:</b> - CalTRANS</p> <p><b>Funded By:</b> - San Joaquin County - CA Trade Corridor Improvement Fund</p> <p>COMPLETED ✓</p>
---	---	---	--	---	--

# PORT OF STOCKTON In Progress Projects



# PORT OF STOCKTON Proposed Projects



- 1** Eastern Southditch Stormwater Enhancement  
*\$2 Million Invested*
- 2** Rail Bridge Replacement
- 3** Rapid Response Boat
- 4** Fire System Upgrades
- 5** Washington St Widening

<p><b>Funding:</b> - California Natural Resources Agency</p> <p>PLANNED JUNE 2020</p>	<p><b>Proposed Funding:</b> - INFRA; TCEP; EDA; RRIF</p> <p>PLANNED</p>	<p><b>Funding:</b> - PSGP 2019 (FEMA)</p> <p>PLANNED</p>	<p><b>Funding:</b> - PSGP 2019 (FEMA)</p> <p>PLANNED</p>	<p><b>Proposed Funding:</b> - INFRA; TCEP; EDA</p> <p>PLANNED</p>
---	---	--	--	---





# Budgeted Improvements

01. Port substation - 2nd 25MW transformer
02. Best warehouse roof rehab
03. Embarcadero rail rehab



# Questions

---