

Where can I drive?

Legally licensed vehicles must remain on designated park roads, county roads, and state highways when operating within the park. Park roads open to the public are posted with brown, NPS road number signs. Most off-road vehicles are not street legal and are prohibited from operating on any road inside the park boundary. All-terrain vehicles (ATVs) and utility vehicles (UTVs) are only permitted on unpaved county roads within the park. To operate ATVs and UTVs, you must abide by Missouri State motor vehicle laws, which can be found in Missouri State Criminal Code, Title XIX (chapters 300 - 307). Please remember, all motor vehicles are prohibited from operating in streams, springs or rivers; with the exception of authorized river crossings.



Legal ATV and operator

We all share the privilege to enjoy our public lands and water. We also share the responsibility to protect those resources. If abuse to our personal property would not be tolerated, then why would we accept it in our national parks? It is up to us to make the difference. Please join us as we continue to protect and preserve Ozark National Scenic Riverways for future generations.

National Park Service
Ozark National Scenic
Riverways
P.O. Box 490
Van Buren, Missouri 63965
Phone: 573- 323- 4236
<http://www.nps.gov/ozar/>



Ozark National Scenic Riverways

National Park Service

U.S. Department of the Interior

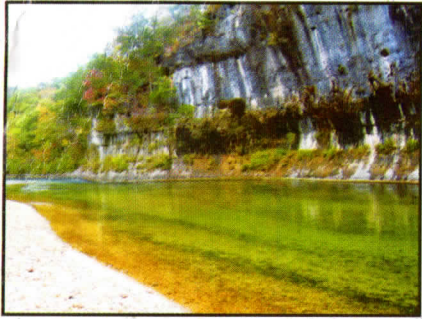


The Effects of Off-Road Vehicles

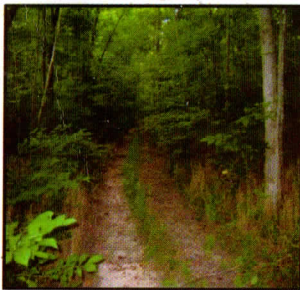


Off- Road Vehicle Use on Public Lands

How would you feel if all-terrain vehicles, trucks or jeeps destroyed your land and polluted your river through their use?



Ozark National Scenic Riverways (ONSR) needs your help protecting the natural and cultural resources in the park from illegal off-road travel. Illegal traces and trails are spread throughout the 80,000 acres of the park. Once an illegal trace is made, the footprint often encourages additional illegal traffic. Illegal off-road traffic can lead to a host of accumulating resource and financial costs for the next generation. Most operators may not be aware of the negative impacts that traveling off-road can create.



Negative effects of off- roading include:

- ◆ Destruction of significant archeological and historical sites.
- ◆ Damage to native vegetation.
- ◆ Increase in soil erosion.
- ◆ Addition of sediments and contaminants to waterways, which can negatively affect habitat for fish and other aquatic life.
- ◆ Spread of invasive weeds.



Invasive spotted knapweed

- ◆ Increase of motor vehicle accidents and visitor injuries.
- ◆ Damage to sensitive riparian areas and river banks.
- ◆ Creation of roads into undisturbed areas, which can promote the illegal taking, harassment and stress of wildlife.
- ◆ Depriving others of the serenity and enjoyment of nature and the great outdoors.
- ◆ Degradation of ONSR's scenic and unique natural areas.
- ◆ Trespass and damage to adjacent private lands.

How is the park combating this issue?

Park employees are currently closing illegal traces by installing carsonite posts, gates, cables and boulders at the entrances.



Closure will reduce further damage while allowing the impacted areas to rehabilitate. Park visitors can help by staying on designated routes and avoiding closed areas. Violators are subject to fines and/or seizure of property.

What is considered an off- road vehicle?

The definition of an off-road vehicle includes dirt bikes, all-terrain vehicles (ATV), utility vehicles (UTV), dune buggies, golf carts, tractors, lawn-mowers, four-wheel drive vehicles when used off-road, and any other vehicle designed for and/or capable of off-road travel.

