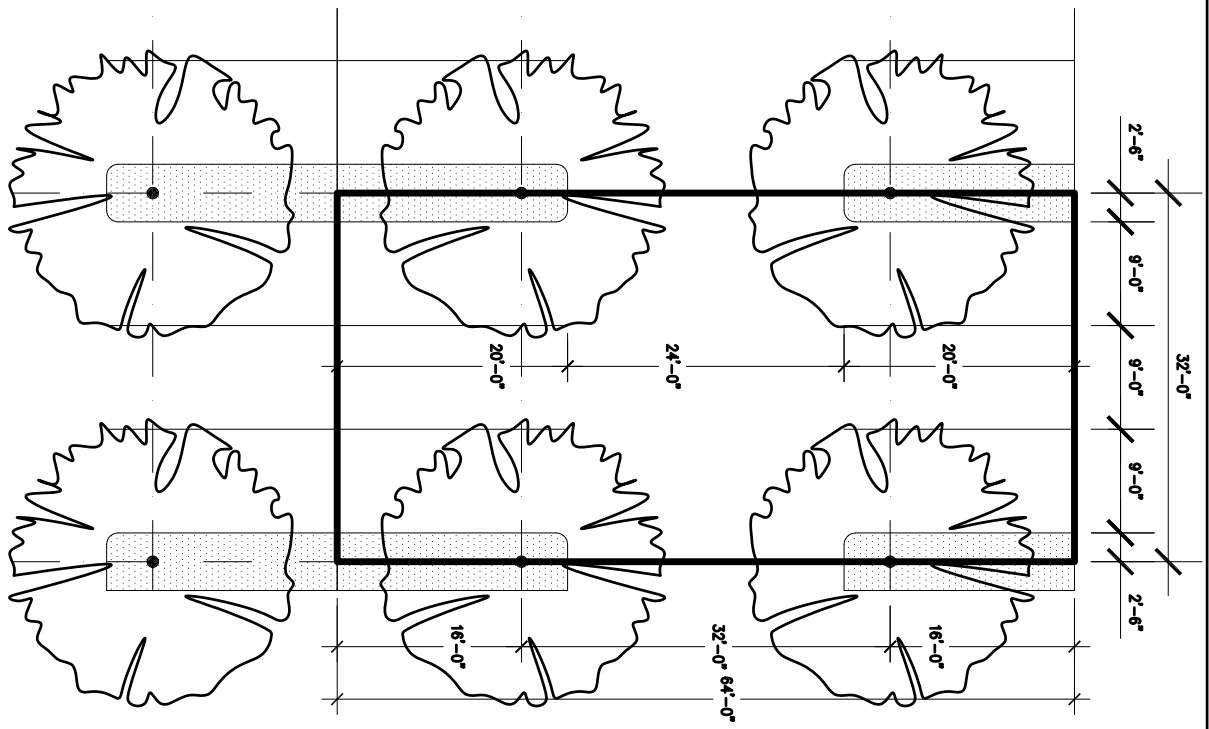


2. PARKING LOT WITH 32' X 32' GRID OF TREES  
 BIOSWALES AT TREE ISLANDS . 5' X 40' FOR DRAINAGE  
 PERMEABLE CONCRETE WOULD ALLOW ADDITIONAL DRAINAGE  
 32'X32' IS A MINIMUM GRID THAT WORKS - BIOSWALES CAN BE LARGER WITH A LARGER GRID



1. BASIC 32' X 64' PARKING LOT MODULE

**32' TREE GRID FOR URBAN CANOPY . AT ALL SURFACE PARKING LOTS**  
 SUSTAINABLE LAND USE COMMITTEE . SIERRA CLUB LOMA PRIETA