

**Georgia ForestWatch, Photographs of Brawley Mountain Project**

**Summer 2014**



"Temporary" Road up the East ridge of Brawley Mountain project area.



Chipper set up on East ridge.



Chipper. With the tractor trailers up and down the ridge, as well as the track hoe and the skidder, the ground has the texture of concrete.



The Skidder that drags the logs to a central loading point. Note the huge chains on the wheels. They provide traction but have heavy impacts on the land.



Logging on this scale requires a lot of big roads and this D-6 can build them.



Middle ridge of Brawley Mountain project area. A sea of stump sprouts. Cut two years ago. Difficult to see development of any of the desired open grassy woodland.



West ridge of the Brawley Mountain project area. Cut 4 years ago. Herbicided twice and burned this spring and still the stump sprouts come back. Difficult to convert to a grassy woodland

### Revegetation



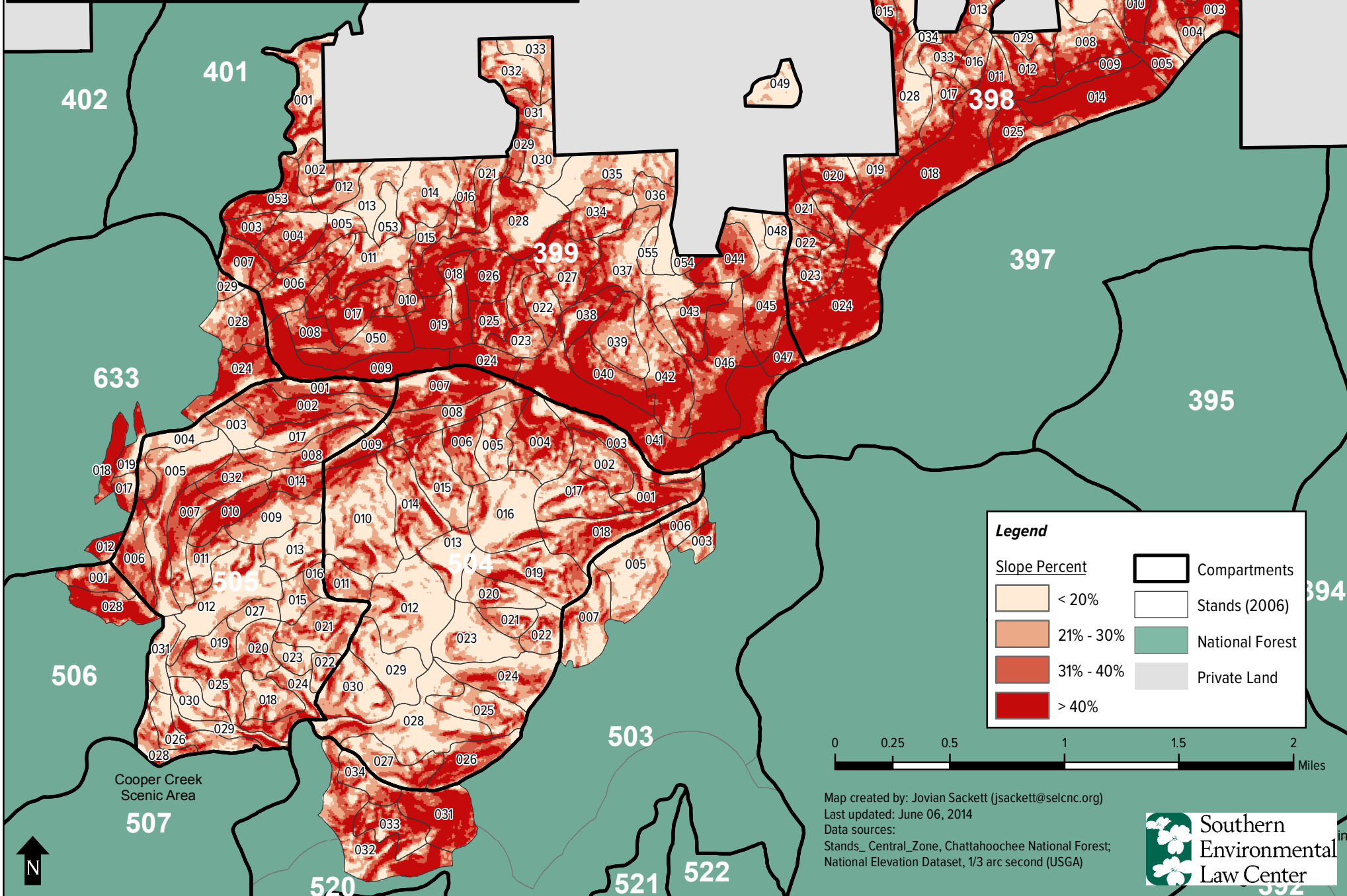
Lack of vegetation, West ridge, January 2014.



Continued lack of vegetation, West ridge or Middle ridge, May 2014

# Percent Slope

Cooper Creek Timber Sale Project Area  
Chattahoochee National Forest, Union County, GA



**Legend**

	< 20%		Compartments
	21% - 30%		Stands (2006)
	31% - 40%		National Forest
	> 40%		Private Land

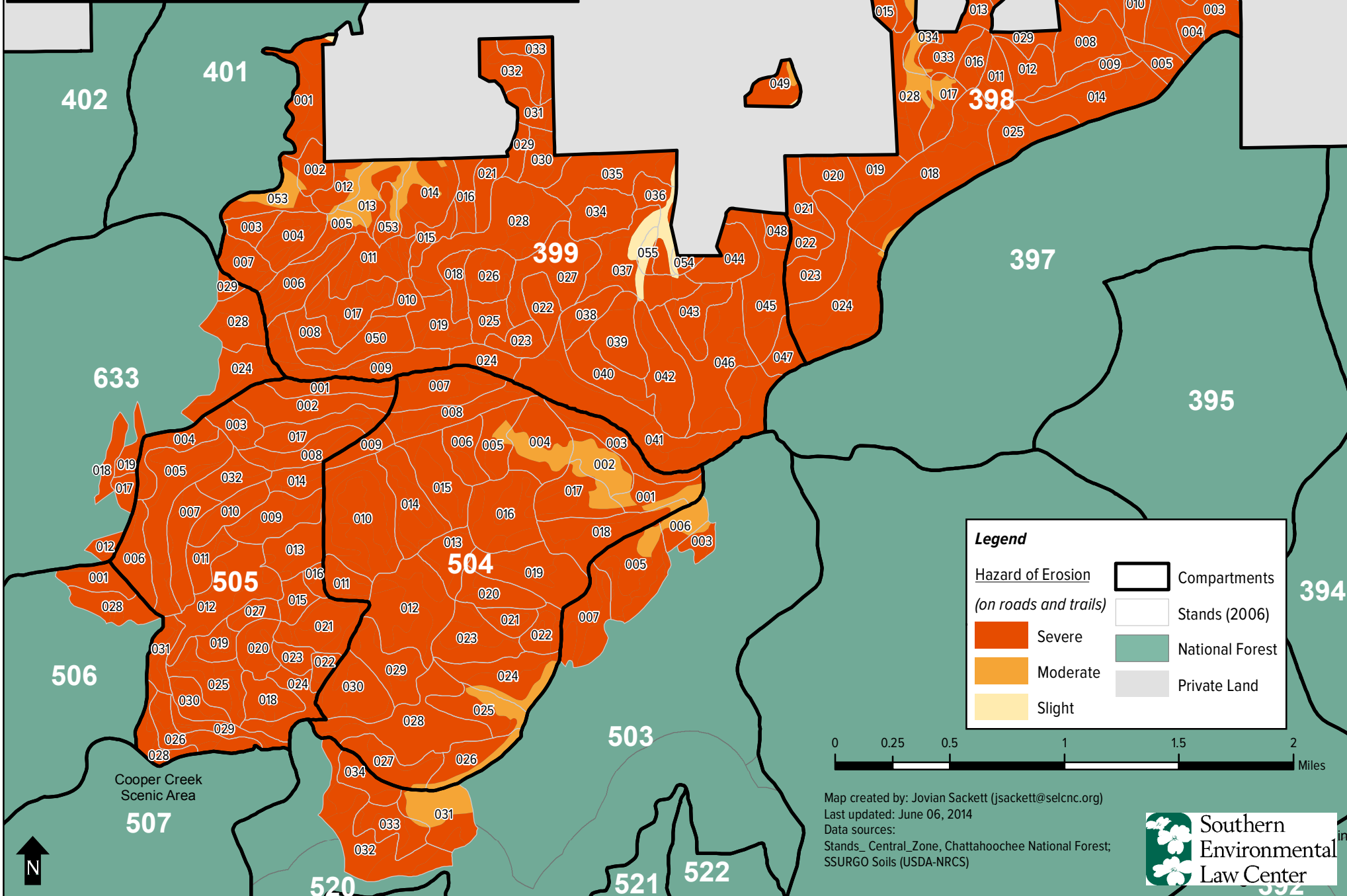


Map created by: Jovian Sackett (jsackett@selcnc.org)  
Last updated: June 06, 2014  
Data sources:  
Stands\_Central\_Zone, Chattahoochee National Forest;  
National Elevation Dataset, 1/3 arc second (USGA)



# Soil Erosion Hazard

Cooper Creek Timber Sale Project Area  
Chattahoochee National Forest, Union County, GA



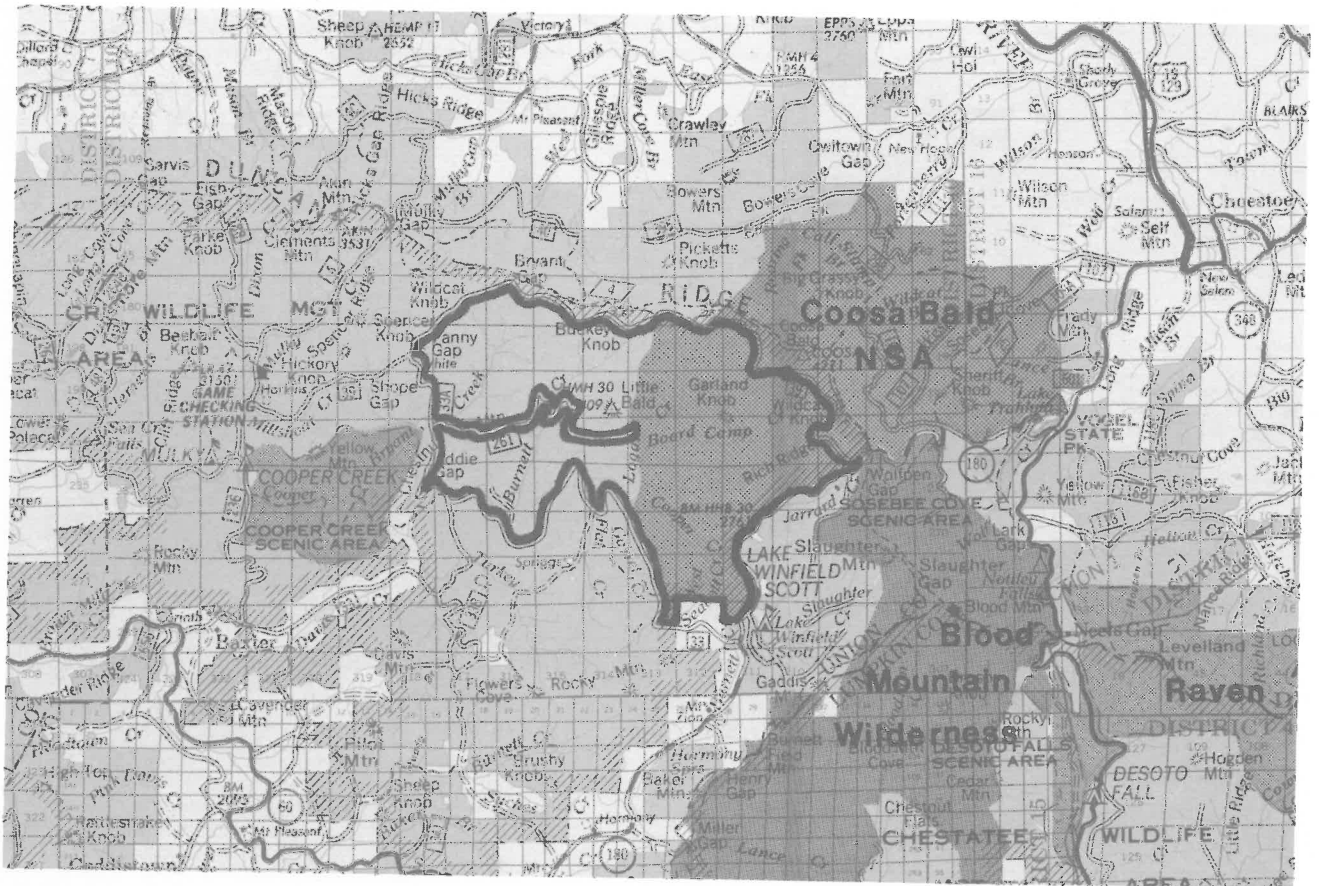
**Legend**

	Hazard of Erosion (on roads and trails) Severe		Compartments
	Moderate		Stands (2006)
	Slight		National Forest
			Private Land



Map created by: Jovian Sackett (jsackett@selcnc.org)  
Last updated: June 06, 2014  
Data sources:  
Stands\_Central\_Zone, Chattahoochee National Forest;  
SSURGO Soils (USDA-NRCS)





Scale: one-half inch to the mile (1:126,720)

## Board Camp

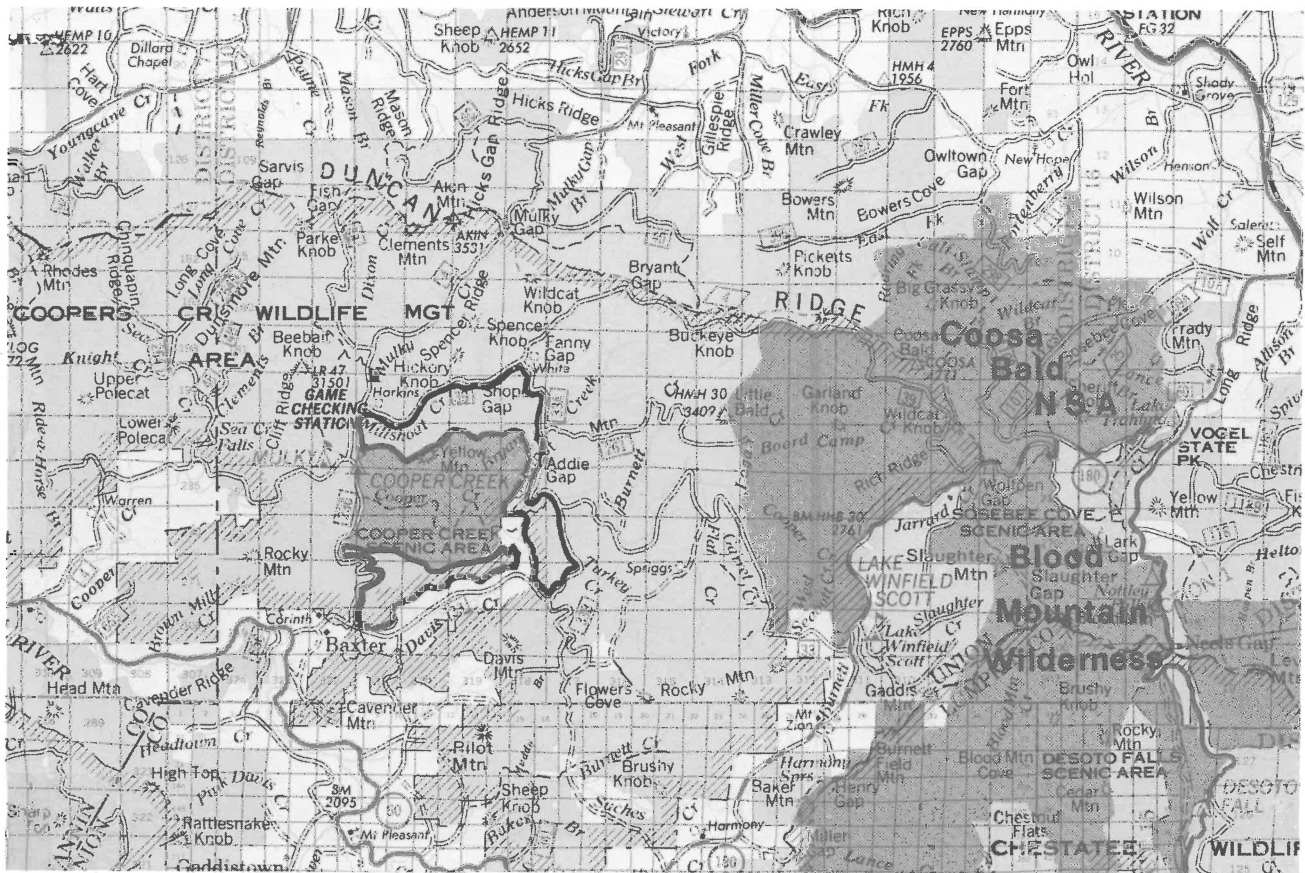
This area connects the very popular Cooper Creek Scenic Area and lovely Coosa Bald National Scenic Area. The Cooper Creek Scenic Area contains a sizable stand of old-growth, and Coosa Bald has outstanding vistas and is a rich botanical area. The area was part of RARE II.

The key features of the region are the many tributaries of Cooper Creek, an outstanding wild trout stream. These, together with the relatively gentle slopes, have combined to make this a highly popular recreation area for fishing, camp-

ing and hunting.

The portion of the Coosa Bald National Scenic Area included in the eastern half of this area is not fully protected from road building. However, the Chattahoochee Forest Protection Act of 1991, which established the Coosa Bald National Scenic Area, mandated the protection, enhancement, and promotion of opportunities for scenic primitive experiences. Full protection, therefore, is recommended for the entire area.

**Approximate Size:** 5,000 acres **Location:** Union County, 15 miles south of Blairsville, Brasstown Ranger District **Topos:** Mulky Gap, Coosa Bald, Neels Gap and Suches



Scale: one-half inch to the mile (1:126,720)

## Cooper Creek Scenic Area Extensions

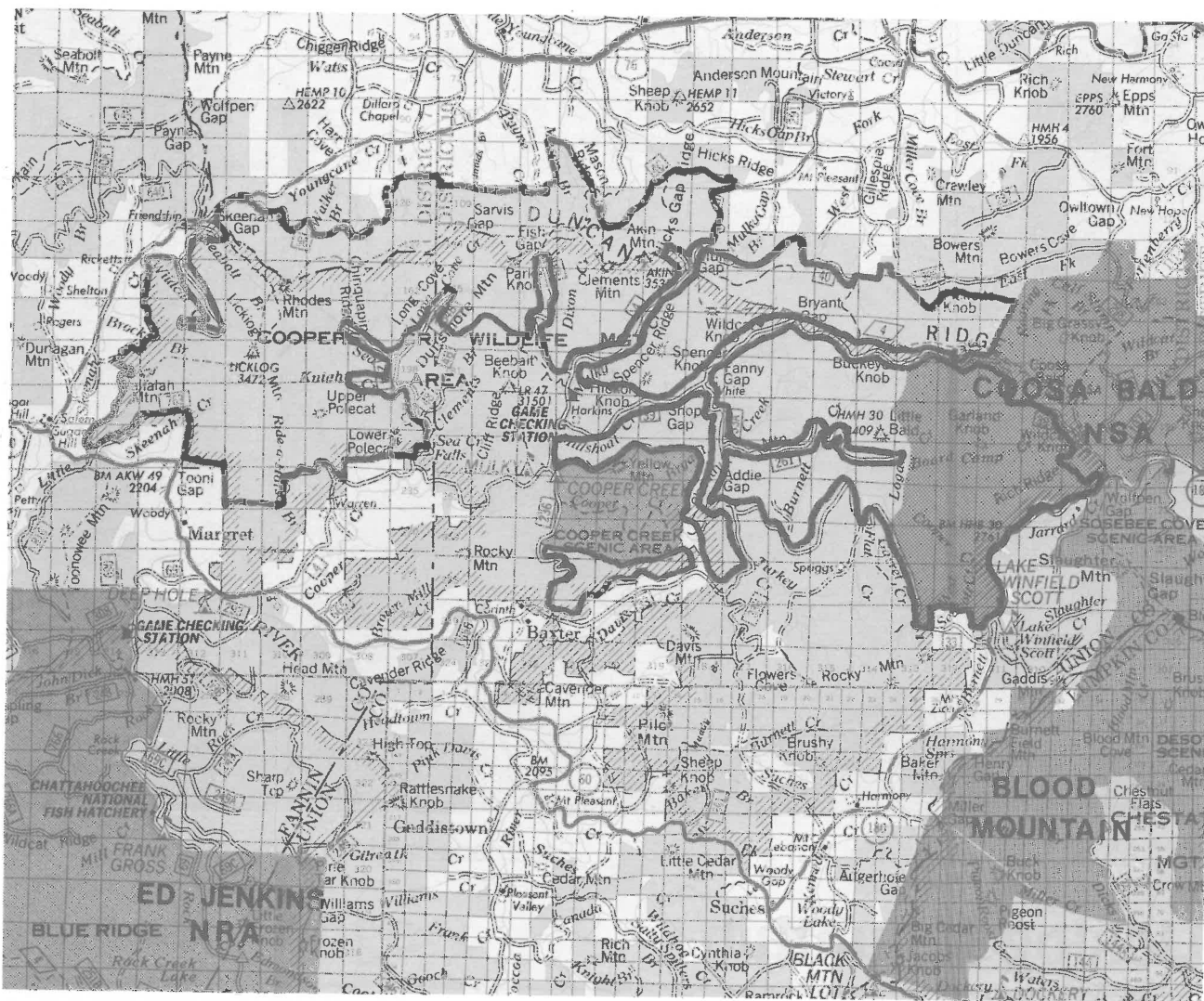
The Cooper Creek Scenic Area, despite its relatively small size (1,240 acres), contains a remarkable trove of biological and scenic treasures. Cooper Creek, a mountain trout stream, courses across its center. The majority of the area is probably largely old-growth forest. Large hemlock and white pine border the creek. In the southeast corner there are large white and northern red oak and black birch and exceptionally large tulip poplars, the "Valley of the Giants."

The latter area is perilously close to the southern border of the scenic area. There are at least four trails that explore this rich area; one borders Cooper Creek from the west and one enters the "Valley" from the southeast.

In order to preserve and to allow for expansion of the biological diversity inherent in this old growth forest, it is recommended that its borders be expanded to the surrounding roads.

**Approximate Size:** 1,000 acres **Location:** Union County, 15 miles southwest of Blairsville, Brasstown Ranger District **Topos:** Mulky Gap and Suches





Scale: one-half inch to the mile (1:126,720)

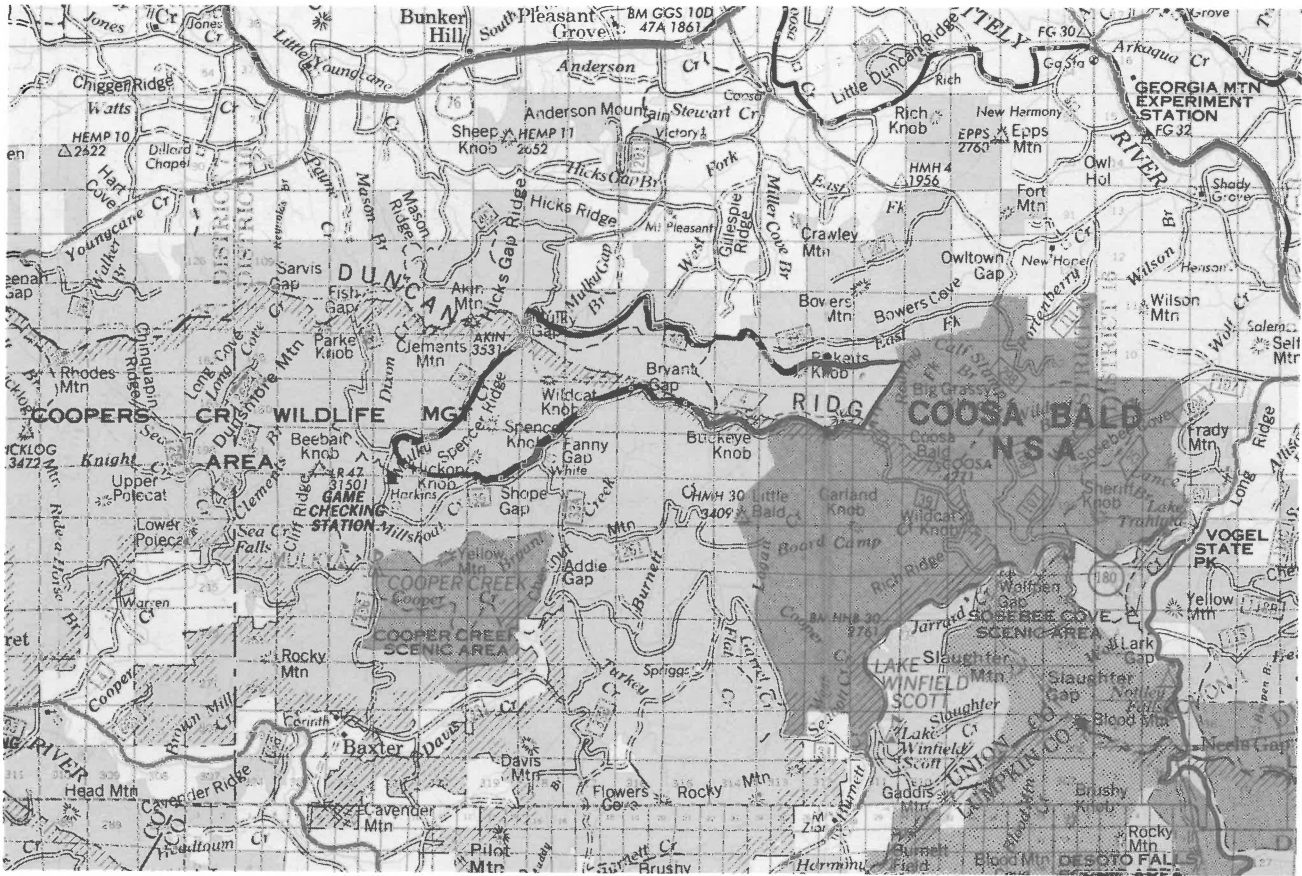
## Duncan Ridge Cluster

- Licklog Mountain
- Duncan Ridge
- Board Camp
- Cooper Creek Scenic Area Extensions

This cluster lies north of the Blue Ridge but is an area of moderately high elevation. The dominant topographical feature is Duncan Ridge, which is anchored on the west by Licklog Mountain and on the east by Coosa Bald National Scenic Area,

which gives rise to the popular and pristine Cooper Creek.

Thus the four members of this cluster form a logical unit for protection and enhancement of the important botanical and recreational features of the individual areas.



Scale: one-half inch to the mile (1:126,720)

## Duncan Ridge

This area is next to the Licklog Mountain area along FSR 4 and extends east along FSR 4 to abut the Coosa Bald National Scenic Area. Thus, inclusion of this section would complete the protection of Duncan Ridge and the steep ridges, deep coves and watersheds on its northern slope. The Duncan Ridge Trail also runs through this section. This trail together with the Benton MacKaye Trail connects the Appalachian

Trail (AT) at Slaughter Gap with the AT near Three Forks. An attractive three-to-four-day loop trail (almost fully protected) would be possible by inclusion of this area together with others in this proposal.

Potential old-growth clusters also exist south of the ridge.

At present the area is open to logging. It is recommended that it be fully protected.

**Approximate Size:** 2,500 acres **Location:** Union County, 10 miles southwest of Blairsville, Brasstown Ranger District **Topos:** Mulky Gap, Coosa Bald