

CANYON ECHO

VOLUME 18/ Number 8 October 1982



SIERRA CLUB • GRAND CANYON CHAPTER

GET OUT THE GREEN VOTE



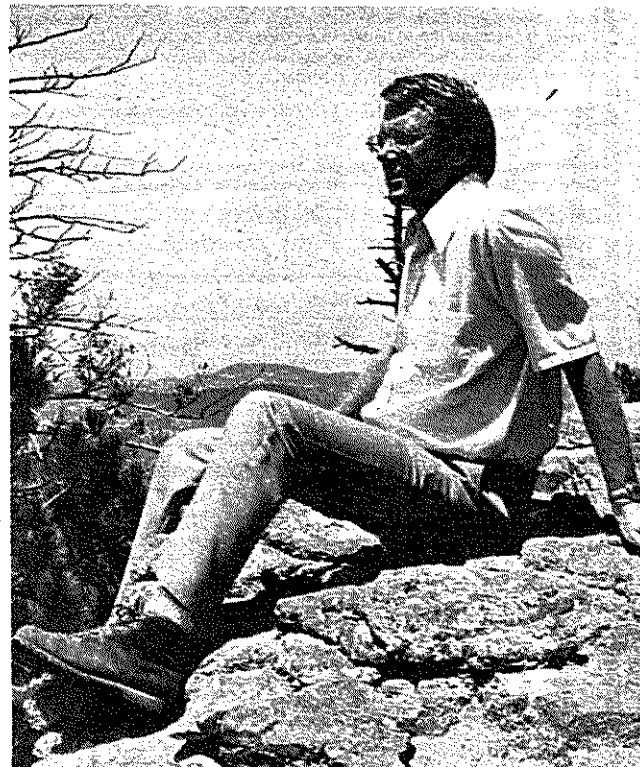
Morris K. Udall

Courtesy Arizona SCOPE

In materials released to the various media this week, the Grand Canyon Chapter announced its "first-ever" political endorsements by the Sierra Club in Arizona. Candidates endorsed are: incumbent Bruce Babbitt for Governor; Congressman Morris K. Udall for re-election to the 2nd. District seat; and Pat Bosch, challenger for the 3rd District Congressional seat currently held by Congressman Bob Stump. No endorsements were made in the U.S. Senate race, or in the Congressional contests in Districts 1, 4, or 5.

The endorsements were approved by a unanimous vote of the Chapter Ex-Comm at a meeting held in July in Phoenix. A fund appeal for the Club's political arm - Sierra Club Committee on Political Education (SCOPE) - included with the annual fund-raising appeal netted over \$500 for use in Arizona.

Mo Udall
Bruce Babbitt
Pat Bosch
Receive
Endorsements



Bruce Babbitt (photo courtesy *The Arizona Republic*)

Chapter SCOPE Chair Doug Shakel noted this is the first time the Sierra Club has engaged in direct political activism during an Arizona election. This activity reflects the new directions being taken by the Club on a nationwide basis. He explained that the financial reorganization undertaken by the Sierra Club during the last decade as a consequence of its long battle with the Internal Revenue Service had the unexpected benefit that we were in a position to form a political action committee, as an activity precluded for most major environmental organizations such as the Audubon Society and the National Wildlife Federation, for its new-found degree of political freedom.

The Club's movement into direct political activism has been very cautious, however, with activity

outside California being approved for the first time only this year. There has also been considerable debate among Club members and leaders at all levels, regarding the appropriateness of such activities. But more and more there has been a perception that conservation activities are usually political acts, and the most directly effective political act is to elect someone who will be sympathetic to our interests. Thus the debate as to whether political activities compete with conservation activities can be viewed in another light where political activities constitute the essential precursor of truly effective conservation efforts.

Another concern has been the apparent bias toward Democratic candidates. Some development-oriented Republican leaders have gone so far as
(continued on page 5)

ARIZONA BOTTLE BILL = GOOD ECONOMICS

As the Echo goes to press there are four weeks to convince the voters about the merits of the bottle bill. As expected the media blitz by the bottling industry has begun, and will probably get heavier. It will be important to remember the main argument about the bottle bill-- it does make good economic sense by conserving resources, energy, creating jobs and reducing litter.

Returnables Will Increase the Number of Jobs!

While some jobs will be affected by the bottle bill, there will be an overall increase in available work. Even

an industry-sponsored study showed that nation-wide bottle bill legislation would result in over 130,000 more jobs! Oregon enjoyed an increase of 200 jobs as a result of their deposit law; Vermont has added 350 jobs; Main employment increased by 272; and Michigan 4,648 new jobs were created!

The ABBC has received endorsements from the Retail Clerk's Union, Local #99 (Phoenix) and 727 (Tucson).

The Bottle Bill Will Reduce Taxes!

The reduction of solid waste means lower collection and disposal costs. Since a bottle bill went into effect

in Michigan in 1979, the taxpayers there have saved over \$15 million per year. And the need for additional solid waste landfills is reduced, resulting in further savings.

The bottle bill will conserve energy.

If there were a national can and bottle bill, 44% of all the energy used by the beverage industry could be saved. That's the estimate of the Federal Energy Administration now part of the Department of Energy. Alcoa Aluminum says that a recycled aluminum can saves 95% of the energy necessary to make a can from virgin materials.
(cont. on page 5)



GRAND CANYON CHAPTER DIRECTORY

Canyon Echo Office

3052 N. Fontana
Tucson, Az. 85705
(602) 624-7152

Editor:
Business Manager:
Echo Staff:

Arleen Kendrick
Justin Schmidt
Candy King
Robin Klacke

Canyon Echo (ISSN0164-7024) is the official publication of the Grand Canyon Chapter, Sierra Club. It is published ten times a year, monthly, with combined issues in June-July and December-January. Annual Dues to the Sierra Club are \$25, of which \$1 is for subscription to Canyon Echo. Subscription rate for non-members is \$5. Address changes for members should be sent to the Sierra Club, 530 Bush St. San Francisco, Ca. 94108. Non-member address changes should be sent to Canyon Echo Office. Second Class postage paid at Tucson, Arizona.

Postmeter: Send address changes to CANYON ECHO, 3052 N. Fontana, Tucson, Az. 85705.

Advertising: \$5 per column inch, (plus copy preparation). Send to editor. News, opinion, art and photographs are invited, submit to Editor, Canyon Echo Office.

CANYON ECHO SUBSCRIPTION BLANK

Name _____
Street _____
City _____ State _____
Zip Code _____ Phone _____
New _____

SOUTHWEST REGIONAL REPRESENTATIVE

Brant Calkin, 1709 Paseo de Peralta, Santa Fe, New Mexico, 87501

CHAPTER ADDRESS

14629 Verde Ave., Yuma, Az. 85365 (726-8135)

CHAPTER EXECUTIVE COMMITTEE

Chairperson Hal Hallett, 14629 Verde Ave., Yuma, Az. 85365 (726-8135)
Vice-Chair Judy Reynoso, 1513 W. Windsor, Tucson, Az. 85705 (687-9645)
Secretary John Guild, 7744 E. Roosevelt St., Scottsdale, Az. 85257 (945-3593)
Treasurer Clyde McGoldrick, Box 502, Pearce, Az. 85625 (826-3588)
Committee Members
Jay Peiser, 1108 Warren, Winslow, Az. 86047 (289-5081)
Lee Oler, 207 W. Dehil, Tucson, Az. 85705 (791-9246)
Brigitte Mueller, 4221 W. Golden Lane, Phoenix, Az. 85006 (931-2122)
Estelle Brown, Box 1433, Bisbee, Az. 85603 (432-3915)
Maureen Mageau, 1523 W. Earll Dr., Phoenix, Az. 85015 (274-1469)

CHAPTER APPOINTED POSITIONS

Conservation Sherman Cawley, 2331 E. Virginia, Phoenix, Az. 85006 (275-9643)
Membership Brigitte Mueller, 4221 W. Golden Lane, Phoenix, Az. 85021 (931-2122)
Outings Jim Vaaler, 4644 E. Montecito, Phoenix, Az. 85018 (840-3547)
Council Delegate Estelle Brown, Box 1433, Bisbee, Az. 85603 (432-3915)

GROUPS

Chiricahua (Cochise, Graham, Greenlee Counties)
Chairperson Clyde McGoldrick, Box 502, Pearce, Az. 85625 (826-3588)

Kofa (Yuma, Mohave, Counties)
Chairperson Elana Hallett, 14629 Verde Ave., Yuma, Az. (726-8135)

Mohave County Information
Joaquin Valdez, Box 1101, Bullhead City, Az. (758-7433)

La Sección del Rincon (Pima, Santa Cruz, southern Pinal Counties)
Co-Chairpersons Gayle Hartmann, 2224 E. 4th St. Tucson, Az. 85719 (325-6974)
Roy Berick, 2220 N. Norton Ave. Tucson, Az. 85719 (326-7883)

Palo Verde (Maricopa, Gila, northern Pinal Counties)
Chairperson Beth Medrano, 5121 N. 13th Ave. Phoenix, Az. 85006 (279-9427)
Information 267-1649 call forwarding.

Plateau (Coconino, Apache, Navajo, Yavapai Counties)
Chairperson Sharon Galbraith, Route 4, Box 886A, Flagstaff, Az. 86001 (774-1571)
Information Box 3189, Flagstaff, Az. 86003

LEGISLATIVE ADDRESSES

US Senators Senate Office Bldg, Washington, D.C. 20510 (202-224-3121)
US Representative House Office Bldg, Washington, D.C. 20515
Governor 1700 N. Washington, Phoenix, Az. 85007 (255-4331)
Az. State
Legislature 1700 N. Washington, Phoenix, Az. 85007 (255-4331)

GRAND CANYON CHAPTER

The Chapter By-laws were approved by the general membership. A total of 18 votes were received; all approved the revised bylaws. Although 18 out of 4,000 members is hardly an overwhelming mandate, atleast the vote was unanimous. Oct. 16 (SAT) Reserve this date and plan to attend the Phoenix area fund raiser for Mo Udall

Nov. 13 (SAT) 10:00 a.m. Chapter Conservation meeting; and 1:00p.m. Chapter Ex-Com meeting. Both meetings will be held in conjunction with the Chapter Outing at Organ Pipe National Minument. Submit Conservation agenda items to Sherm Cawley and all other agenda items to Hal Hallett by the Wednesday, Nov. 3 deadline. Addresses are listed in directory on this page.

Saturday evening from 6:30 to 8:30 p.m. there will be a media workshop that will be open to everyone.

CANYON ECHO

Oct. 16. Deadline for submission of articles, photos, advertisements, everything for the Echo.

Oct. 27. Mailing party at the home of Arleen Kendrick, 3052 N. Fontana 624-7152. Refreshments provided.

The Echo still needs an advertising manager for Tucson, as well as people to help with paste up, typing, proof reading! Call Arleen at 624-7152 for details.

CHIRICAHUA group news



There will be no October group meeting.

Nov. 13, 14. Ex-Com and Conservation meeting at Organ Pipe National Monument, during the annual Chapter Outing. For time see any ex-Com member.

KOFA group news



Oct. 7 (THURS) 7:00 p.m. Kofa Group Conservation and Ex-Com meeting at the home of Kethryn Michel, 119 George Street, Comerton. Please note the change of date from that announced in the September Echo. All members are invited to attend and ehlp plan outings, meetings, and conservation priorities. Refreshments will be served. Call Kathryn at 627-2410 (eve.) for directions, and call Elana Hallett at 726-8135 to submit agenda items or obtain information.

Oct. 19 (TUES) 7:30 p.m. General membership Meeting at Yuma City-County Library, 350 3rd. Avenue, Yuma. Glen Stewart, an avian ecologist with the Bureau of Land Management's Yuma Resources Area, will present a slide talk on his work with rare and endangered birds of prey (raptoss). He will be covering work on the Harris' Hawk and the Peregrine Falcon in such diverse localities as the Grand Teton National Park and the lower Colorado River Valley. The public is invited and refreshments will be served. Call Elana Hallett 726-8135 for more information.

Nov. 4 (THURS) 7:30 p.m. Ex-Com and Conservation meeting at the home of Pat Kenyon, 6519 Cattle Drive, Yuma (North Gila Valley).

Nov.16 (TUES) 7:30 p.m. General Membership Meeting. Details in the November Echo.

DESERT MOUNTAIN SPORTS
Specializing in
Backpacking,
Mountaineering
& Ski Touring
LARRY TREIBER
BILL SEWREY
265-4401
4506 N 16TH ST PHX

PALO VERDE group news



The Palo Verde Group is looking for volunteers to work on producing a series of up to six leadership training films. We need video cameras recorders, and editing equipment and Super 8 sound cameras and editing equipment. If you can help in any way, please contact Terry Hogan, 867-1217 or Beth Medrano, 279-9427

Oct. 12, 16 Tuesday at 7:30, Saturday at time to be announced. Map reading class and field session with Ed Helein, available to members only for fee of \$4. This will be a comprehensive class and participatants will be given a kit, including a topo map, that evening. You will need to bring your own compass to class, along with a pencil. Class meets at Pueblo Grande Museum, 4619 E. Washington, at 7:30.

Oct. 14 (THURS) 7:30 p.m. Ex-Com meeting at the home of Beth Medrano, 5121 N. 13th. Ave. Phoenix, 279-9427.

Oct. 21 (THURS) 7:30 p.m. General meeting. Pueblo Grande Museum, 4619 E. Washington, Phoenix, For information about the program, call Beth Medrano.

Oct. 28 (THURS) 7:30 p.m. Conservation meeting at Pueblo Grande Musuem, We will continue to discuss issues of clean air, toxic wastes, wild and scenic rivers and Adopt-A-Wilderness.

Nov. 4 (THURS) 7:30 p.m. Ex-Com meeting at the home of Beth Medrano.

The Palo Verde group will offer a prize to the group member who personally recruits the most new members during the October membership contest. Here 's your chance to win a free ticket to our Chapter Dinner in Tucson

PLATEAU group news



The Sierra Club Calendars for 1983 have arrived !! We can sell them to Sierra Club members for a reduced rate. If you're interested in buying some, call Sharon at 774-1571, or attend one of the monthly meetings. We are also looking for volunteers to help sell calendars.

I would like to thank all of the people who helped with the Plateau Group booth at the county fair over Labor Day weekend. It was a great success! Our Endangered Species cookies were a big hit again, and we sold lost of "I Know Watt's Wrong" bumper stickers. Having a booth at the fair gives us an opportunity to let people know that the Sierra Club is active in Northern Arizona. It's also a lot of fun to talk to the people that stop by. Thanks again.

by Sharon Galbraith,
Plateau Group Chairperson

Oct. 14 (THURS) 7:30 p.m. The General Meeting will be held in Room 135 of the Chemistry Building on the NAU Campus. It is entitled "The Green (continued on page 3)

PLATEAU GROUP NEWS

Vote in Arizona". The candidates and issues on the November ballot will be the subject of the meeting. A part of the meeting will be a slide show on the Bottle Bill. This is an excellent opportunity to become more familiar with the issues!

Oct. 21 (THURS) 7:30 p.m. The Conservation Meeting will be held at 5626 Jo Don Road, Space #15. The name on the mailbox in front is Gibson. For directions call Patti at 526-5358.

RINCON group news

Although this is not the beginning of our calendar year, it marks the beginning of the school year and the onset of Fall. In Tucson, after the lull of the summer months, both these events signify a renewed interest in organizational and outdoor activities. Therefore, this issue of the Echo is an appropriate place to outline our plans for the remainder of the year.

Thanks in part to James Watt, the Rincon Group (Pima, Santa Cruz, and southern Pinal counties) has grown dramatically from about 900 members in 1980 to about 1400 in 1982. But, please do not think as I once did, that this large number guarantees the success of our activities or ensures we will meet our environmental goals. As in most groups a very small nucleus of active members does much of the work. For example, due to the efforts of Arleen Kendrick, the Canyon Echo comes out on time and due to the efforts of John Leonard, an interesting program occurs each month.

There are many other activities requiring varying amounts of time and varying levels of effort. We hope many of you will find a contribution you can make among our Fall activities. New members, take a chance and come to a mailing party, a program meeting, or an Ex. Comm. meeting. We promise not to overburden you with some impossible task, but we would very much appreciate your participation.

by Gayle Hartmann
Co-chair, Rincon Group

Oct. 16 (SAT) SAGUARO NATIONAL MONUMENT, SERVICE PROJECT. We have been asked to participate in a trail maintenance project on the Douglas Springs Trail in the Rincon Mountains (Saguaro Nat'l. Monument East). We will be clipping brush and installing water bars for starters. We need about a dozen energetic souls willing to spend part of a Saturday. No previous experience is necessary; we have been assured that the Monument will supply us with technical advise.

We will begin about 9:00 a.m. and probably work till mid-afternoon, with a break for lunch, of course. This will be a good opportunity to learn what goes into building a trail as well as to meet people. Call Brian McCarthy, Outings Chairman, at 623-2250 home, or 624-6656 work.

THE GREENING OF CONGRESS



The Sierra Club is prepared to make the "green vote" a pivotal factor in the 1982 elections by endorsing Congressional candidates.

REFRESHMENTS-NO HOST BAR-TICKET REDEEMABLE FOR BEVERAGE

ON THE EVENING OF OCTOBER THE SIXTEENTH, THE SIERRA CLUB IS HOSTING A BI-PARTISAN PARTY-FUND RAISER FOR MO UDALL. AS A COMMUNITY MEMBER CONCERNED ABOUT ENVIRONMENTAL ISSUES, WON'T YOU JOIN US IN WELCOMING MO TO HIS NEW DISTRICT? TAKE THIS OPPORTUNITY TO MEET OR RENEW YOUR ACQUAINTANCE WITH THIS ARIZONAN WHO HAS CONTRIBUTED SO MUCH TO THE FIGHT TO PRESERVE OUR NATURAL HERITAGE. VISIT WITH THE UDALL STAFF AND COMMUNITY ENVIRONMENTAL LEADERS.

OCT. 16, 1982

8:00-10:00 PM

THE YACHT CLUB

3617 N. CENTRAL AVE.

PHOENIX

MAKE CHECKS PAYABLE TO THE UDALL FOR CONGRESS COM., 1982 \$10⁰⁰ DONATION
TICKETS AVAILABLE AT THE DOOR OR FROM SIERRA CLUB MEMBERS
PAID FOR BY THE UDALL FOR CONGRESS COMMITTEE 1982, HARRY KNACHNER, TREASURER

Udall: ARIZONA'S NATIONAL RESOURCE

FROM THE CHAPTER CHAIR

As you read this column there is about one month before the November general election. On November 2nd. the voters of Arizona will make choices that will have a major impact on the future direction of the environmental movement. One of these choices concerns whether or not Arizona will require a deposit on beverage containers. More commonly this is referred to as the Bottle Bill.

During the past few years the Grand Canyon Chapter has been a key supporter of the effort to secure Bottle Bill legislation. Among other actions, Chapter members have circulated petitions to get the initiative on the ballot and the Chapter has provided direct funding. These past efforts have worked and we now have a chance to enact this much needed law. Our opportunity appears as Proposition 200 on the November ballot.

The future of the Bottle Bill, however, is still very much in doubt. The Chapter Executive Committee recognized the problem and voted to commit additional Chapter funds to support a fund raising effort and publicity in support of the bill. The rest is up to you.

Undoubtedly, you have already been besieged with anti-Bottle Bill publicity. The full page newspaper ads are just one example of the amount of money the bottle bill opponents will commit to defeat this law. The advertising barrage will intensify as we get closer to the elections.

Don't be discouraged, however, We can obtain bottle bill legislation with your help. In particular, I strongly encourage you to directly contribute to the Arizona Bottle Bill Campaign by a positive response to the Chapter wide direct fund appeal. The money is needed to help combat the opposition's publicity.

In addition, I encourage you to get involved in a personal way and help publicize the positive aspects of the bill. In this area your Chapter leadership can offer some assistance. The people listed in the leadership directory on the second page of this issue can help you both locate information on the subject and suggest ways in which you may help the Bottle Bill Campaign.

November 2nd provides us with the opportunity to achieve a cleaner outdoor environment and energy savings. Your support of the Proposition 200 is appreciated.

Hal Hallett, Chairman
Grand Canyon Chapter

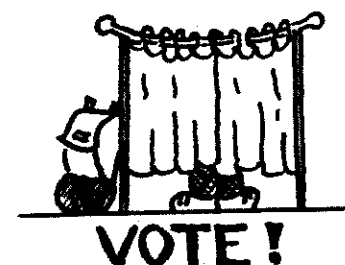
ADOPT-A-WILDERNESS PROJECT

On September 18, a successful Adopt-a-Wilderness Workshop was held and we now have people investigating a number of potential wilderness areas. If you are knowledgeable about or would like to learn more about the Santa Ritas Galiuros
Rincones Chiricahuas
Huachucas Santa Therasas
Dragoons Peloncillos
Call Gayle Hartmann at 325-6974.
Hikes to these areas will take place this Fall.

Oct. 23 Recycling Drive, Sierra Club will come to your home to pick up bottles and cans. Send a postcard by Oct. 15 To Sierra Club Recycling Drive, Box 3506, Tucson, 85722.

To volunteer to help, call John Leonard, 790-5588, or Brian McCarthy 623-2250.

Dec. 3-5. FOURTH AVENUE ST. FAIR
We will again sell date books, calendars, books, and perhaps Sierra Club T-shirts. Plan to volunteer a few hours at our booth.



ACTION ALERT!**NORTHERN ARIZONA
AND URANIUM MINING***Courtesy Robert Lippman*

A broad coalition of conservationists, sportsmen, recreationists, and businessmen has formed in the northern part of Arizona to arouse concern over mining of uranium ore and the effects this will have on the environment and public health.

Some of the highest grade uranium ore in the world is being located and mined on both the north and south rim areas of Grand Canyon. Several uranium mines, operated by Energy Fuels Nuclear, Inc., are presently operating on BLM lands within the Kanab Creek drainage, upstream of Grand Canyon National Park. Energy Fuels Nuclear, Inc., and Pathfinders, Inc., are foreign-owned; nuclear fuels will be shipped overseas by these corporations.

The Environmental Protection Agency, along with the Arizona Department of Health Services, has issued permits to Energy Fuels Nuclear, Inc., to discharge mine drainage water containing heavy metals and radioactive materials into tributaries of the Grand Canyon (Kanab Creek).

Mining and exploration activities are occurring illegally in the Kaibab National Forest (Game Preserve), and BLM Wilderness Study Areas in the Arizona Strip have been opened for development or deleted from wilderness consideration to favor uranium development. Road construction, destruction of wildlife habitat, drilling, and impairment of these areas is occurring at a rapid rate, with no royalty or lease payments to the government. Virtually every tributary of the Colorado River in Grand Canyon is slated for exploration or potential development, including Kanab Creek, Cataract (Havasupai) Creek, Parashant Canyon, North Canyon, Rider Canyon, etc. Nearly 100 Plans of Operations have been filed for the Arizona Strip, and thousands of claims have been recently staked and filed in Coconino and Mojave Counties

The managing agencies involved (BLM, USFS, EPA, Arizona Department of Health Services; NPS) have yet to address the present and potential impacts of regional development upon the environment, public health, the economy, social structure, etc, and are permitting piecemeal development on a site-by-site basis. Such agency inertia includes the permitting of toxic and carcinogenic mine water discharges into the waters of Arizona (Kanab Creek; authorized by EPA and ADHS), and the lack of enforcement of laws designed to protect our public health and lands (NEPA, FLPMA, Game Preserve Proclamation of 1906). Users of the Colorado River may be adversely affected by these developments. Public involvement, as required under NEPA, et al, has not been actively solicited.

BYLAWS? AGAIN?*by Clyde McGoldrick*

The revised by-laws of the Grand Canyon Chapter were printed in the August issue of the 'Canyon Echo'. However, in the rush to get the copy out, pending summer vacations, etc., one paragraph was omitted.

Paragraph 2.1 is printed below. Members desiring a complete copy of the Chapter by-laws should insert this between paragraphs 1.7 and 2.2 printed on page 12 of the August issue.

**ByLaw 2: Executive Committee
Section 1: Number and Powers
2.1 Numbers**

Subject to the powers of the members as provided by these ByLaws, the management of the affairs and activities of the Chapter shall be in the hands of an Executive Committee of elected and designated members. Nine members shall be elected by the members of the Chapter for terms of two years each, four to be elected in odd-numbered years and five in even-numbered years. Members elected to the Committee shall take office at the close of the calendar year, if after the election, or in any event as of January 1. They shall hold office until their successors have been elected and qualified. In addition each regional group may designate one member of the Chapter Executive Committee. The designated member from each group will have full voting powers on all matters brought before the Executive Committee. It will be assumed that a Group has designated its Chair as its representative unless the Chair is an elected member of the Executive Committee or the Group has specifically designated otherwise. A Group may designate an alternate for its delegate, who may vote in the absence of the delegate.

The coalition of concerned groups is requesting that a public hearing be held in Flagstaff. Those individuals and groups most affected from the impacts of this development must be accorded legal process under this regulatory framework, and an Environmental Impact Statement should be prepared.

Express your concerns to our representatives and regulatory agencies, and request that a comprehensive, interagency environmental impact statement be prepared, with full public participation, prior to any further development!

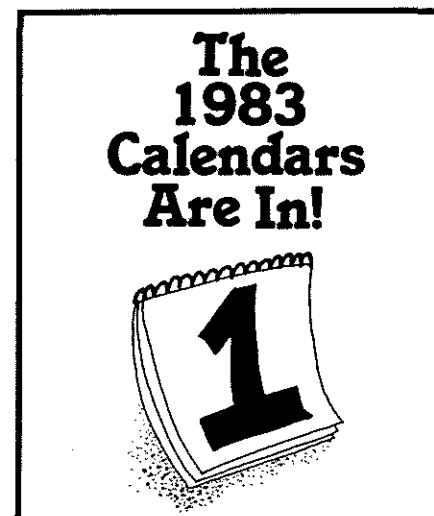
- *Hon. Bruce Babbitt, 1700 W. Washington Phoenix, Az. 85007
- *Rep. Morris Udall, U.S. House of Representatives, Washington, D.C. 20515
- *Sen. Dennis DeConcini, U.S. Senate, Washington, D.C. 20515.
- *Rep. John Seiberling (Subcommittee on Public Lands and National Parks) U.S. House of Representatives, Washington, D.C. 20515
- *Environmental Protection Agency, Region IX, 215 Fremont, San Francisco Cal. 94105.
- *Bureau of Land Management, Box 250 St. George, Utah, 84770 or
- *Bureau of Land Management, 2400 Valley Bank Center, Phoenix, Az. 85073.

For further information, contact Sierra Club, 774-7537, Friends of the River, 774-0130.

ARAVAIPA:**OFFICIAL WILDERNESS***BLM News Release September 16, 1982*

President Reagan has recommended to Congress that Aravaipa Canyon near Winkelman become part of the National Wilderness Preservation System. The President sent the recommendation on Sept. 13, and Interior Secretary Watt said he was "extremely pleased" The area will become the first major component of the system to be administered by the Interior Department's Bureau of Land Management.

The proposal covers 6,670 acres of public land, including the 4,044 acres previously designated Aravaipa Canyon Primitive Area, and 2,626 acres of contiguous public land with wilderness characteristics.

**WILDLIFE THREATENED BY BLM POLICIES.**

Public lands provide habitat for birds, mammals, reptiles and fish. Over 40 of these species are endangered or threatened with extinction. Even though federal law recognizes wildlife as a principal use of these lands, BLM is backing off from important protections.

Please write your Congressman and The Honorable Garrey E. Carruthers Assistant Secretary, Land & Water Department of the Interior 18th and C Streets Washington, D.C. 20240

**THE BEST SHOES IN TUCSON
COME FROM HIRSH'S**

HIRSH'S
HIRSHOES-FOR BETTER SHOES

4 LOCATIONS TO SERVE YOU

**32 years of experience in Quality
Equipment. Professional
Service,
and Friendly Advice**



- Topo Maps •
- Boots •
- Packs •
- Parkas •
- Bags •
- Tents •
- Dried Foods •
- Ski Touring •

**COMPLETE
RENTALS**

Holubar

3925 E. Indian School Rd. 232 W. Southern Ave.
Phoenix, Az. 85018 Tempe, Az. 85282
955-3391 867-1000

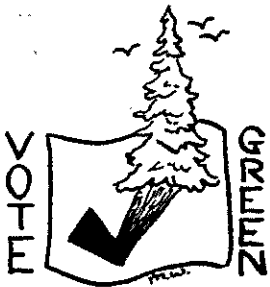
GET OUT THE GREEN VOTE!

to describe the Sierra Club as an arm of the Democratic Party. (All three of the candidates endorsed this time in Arizona are Democrats.) Shakel notes, however, that "the criteria for endorsement are strictly bipartisan, and in those meetings where I have observed deliberations, committee members seem to go out of their way to seek Republicans suitable for endorsement. Regretably, all too many of our western Republican politicians seem to have foresaken their heritage of Teddy Roosevelt, without whose turn-of-the-century conservation ethic most of those Republicans would not have states, cities or counties in which to run for office.

Moreover, there are a number of examples where Republicans have won comfortably with the help of environmentalists: the most recent example was in Vermont, where incumbent Sen.

Stafford, Republican Chair of the Senate Committee and Senate leader for the renewal of the Clean Air Act beat back a strong Democrat challenge with green vote help and a Sierra Club endorsement.

Organized efforts on behalf of the three Sierra Club endorsees will probably be left to the individual campaigns of the candidates. Beth Medrano and Sherm Cawley are carrying the brunt of the load as Phoenix area coordinators. Doug Shakel is coordinating Tucson area efforts. Flagstaff, Kingman and Yuma Club members are encouraged to organize whatever efforts they can on behalf of these three candidates in their areas.



Contact local campaign offices or those in Phoenix or Tucson, (or SCOPE Chair Doug Shakel in Tucson -623-7132) for ideas or more information.

Both Governor Babbitt and his wife Hattie have long been known for their avid participation in hiking and other outdoor activities, and his tenure as Governor has been the first in Arizona in decades to show concern for the land and environmental issues. Reorganization of the State Land Department is one of Governor Babbitt's proudest achievements. Phoenix area residents are aware of the Governor's sensitive handling of the Orme Dam issue, and his skillful stewardship of a broad consensus of community officials and leaders to arrive at a consensus that the confluence dam was not the best solution for that particular problem. In Pima County, voters continue to laud Governor Babbitt for his steadfast support for Catalina State Park, the newest and largest in the state and the first in Pima County, now expected to open in December.

Governor Babbitt has also been an outspoken leader of opposition to the precepts of the "Sagebrush Rebellion", having vetoed the Arizona bill to join that movement. That veto was the only one the legislature has managed to override in the more than four years he has been Governor, but continued failure of that effort in the Federal courts has more than vindicated his position.

Governor Babbitt has also achieved considerable national recognition for his well thought out positions on matters of energy and national resources, and his scientific training (he received two degrees in geology prior to entering law school) have given him an expertise that stood him well in his service as the chairman of the national commission that investigated the Three Mile Island nuclear incident. His willingness to deal with environmentalists and conservation issues in an intelligent and even-handed way merit our strongest support for his efforts at re-election.

Congressman Mo Udall currently has campaign ads touting Mo as a national resource. Few environmentalists would argue the point to the contrary. His reputation as a respected leader of the House of Representatives is nearing legendary proportions, and to have a man of such integrity and stature be on the side of environmentalists is all the more incredible.

As a senior member of the House, and Chairman of the House Interior Committee, Mo Udall has clout that even James Watt and Ronald Reagan have learned to respect. While still divergent from environmental principles on many issues of water and related projects, his congressional accountability is nearly flawless, and Arizonans must see to it that he is returned to Congress.

Mo's Republican opponent, Tucson City Councilman Roy Laos has come out of district backing, but the hoped for ethnic movement into his camp does not seem to have materialized and there seems little other reason to throw away the benefits of Mo's seniority for mere partisan political reasons.

Nonetheless, the Udall campaign is running at high gear, especially concentrating on the Maricopa County area where Mo has never run before. The newly reconfigured District 2 is a wondrous creation, including all of southwestern Arizona, as well as the downtown and adjoining portions of four of the state's largest cities. In fact Mo has more residents of his new district living in Phoenix than he does in his hometown of Tucson!

Pat Bosch is a 52-year old native of Mesa, Arizona, is a former bank marketing officer and gubernatorial aide, and is married to Dries Bosch, a Phoenix area advertising consultant.

Ms. Bosch is strongly committed to environmental ideals, and specifically makes support for the Clean Air Act, clean water, and energy issues an up-front part of her campaign. She actively sought the endorsement and support of the Sierra Club in her race, and hopes our membership will give her lots of help in her campaign efforts.

Ms. Bosch is an intelligent, forceful and dynamic woman with an infectious pleasant personality. She came from out of nowhere in 1974 to get within a few thousand votes (less than 1%) of unseating then Congressman Sam Steiger, one of the top targets of the LCV "Dirty Dozen" hit list.

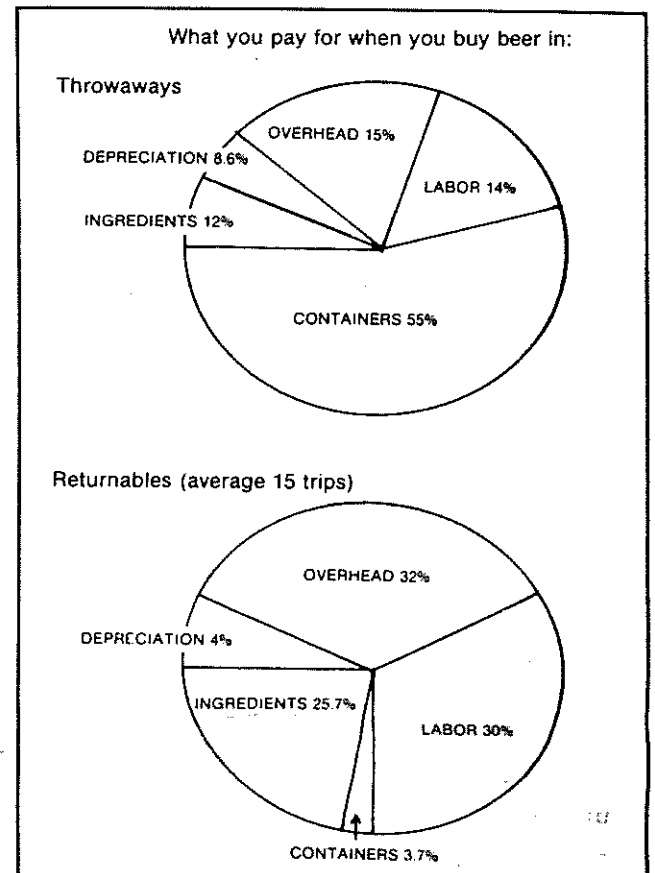
A most important factor in the Chapter decision to support and endorse Ms. Bosch is that the incumbent she is (continued on page 6)

BOTTLE BILL=GOOD ECONOMICS

Returnables conserve raw materials and resources.

In 1975, seven million tons of glass, two million tons of steel and half a million tons of aluminum were used to make beer and soft drink containers. and 90% of our aluminum ore must be imported.

Because of this waste, the National Commission on Supplies and Shortages set up by President Ford recommended that Congress pass national container deposit law. The Environmental Protection Agency, the Department of the Interior, the Council on Environmental Quality and the Department of Energy all agreed. And the Office of Management and Budget recommended that states enact can and bottle bills.



To work for the Bottle Bill, contact one of these people. Donations are needed, send to P.O.Box 1528, Tucson, 85702.

Carefree-Geoffrey Platts, Box 2568, Carefree, 85377.
 Flagstaff-Betsy McKellar, Route 1 Box 9, phone 526-4864
 Elson Miles, 113 S. San Francisco St. phone 779-3121
 Green Valley-Fred Cuneo, 221 W. Calle Montana Jack, phone 625-1357.
 Prescott-Yetta Becker, 440 S. Alarcon, Prescott, 86301
 Roy Houser, 440 Circle 8th Lane, phone 445-9799.
 Joyce Rowse, 1915 Rocky Dells Drive Prescott, 86301
 Portal-Vince Roth, Box 6, Portan, 85632 phone 558-2396
 Phoenix-Rollie James, 2037 W. Medlock phone 242-8152.
 Scottsdale-Brenda Hoskins, 7047 E. Jenan Drive, phone 991-7909
 Sedona-Sill Osborn, Route 5, phone 282-4775.
 Tucson-Arizona Bottle Bill Headquarters phone 795-2900.
 Yuma-Nancy Meister, 1992 S. Maple Ave, Apt. C phone 782-3552.

Please call us for your airline tickets and other travel needs.

TUCSON 745-1622
5315 E. Broadway # 107

browne's travel

GET OUT THE GREEN VOTE!

challenging is none other than Representative Bob Stump, former far right-wing Democrat, Congressional "Boll-Weevil", and recent cross-over to the Republican party. In addition to being a total opponent to virtually every reasonable environmental position, and having recently lowered his LCV score to a perfect "0", Mr. Stump has offended, abused, and/or ignored virtually every organized constituency in his district. This has caused many non-environmental national organizations, such as Hispanic groups, labor unions, etc., to also target him for defeat.

Environmental issues have played little or no role in Arizona's 1st Congressional District race. In a Republican primary generally regarded as tantamount to actual election, John McCain easily beat senator Donna Carlson-West. Ironically, Ms. Carlson-West was the only primary candidate to make serious attempts to address environmental issues, but she came in last in the field of four primary contestants. This may have been in no small part due to her previous vitriolic attacks on conservationists and her stewardship of the Arizona "Sagebrush Rebellion".

Sierra Club members who reside in the 1st district (including southeast Phoenix, eastern Maricopa County, Tempe, Mesa, and the south part of Scottsdale), may hop to eventually be able to enlist Mr. McCain's assistance in environmental matters. Several attempts by Club members to make contact with Mr. McCain to explore the possibility of whether the Club could be of assistance during his primary campaign were answered with stalling tactics or rude rebuffs. His campaign staff explained to Club member Drew Crook that their candidate "didn't have time" to answer a Club questionnaire sent to all candidates in that race. One senior campaign official for McCain told state SCOPE Chair Doug Shakel that he doubted the "Sahara Club" (sic) could have any impact in the District 1 primary race.

Mr. McCain is opposed by Democrat Hegarty. Little of environmental interest is known about Mr. Hegarty.

In the District 4 race, incumbent Congressman Eldon Rudd has an environmental record in Arizona so poor as to be exceeded only by Bob Stump's (Rudd LCV score is =X, Stump's is =0). However, Mr. Rudd's Democrat opponent, Mr. Earley is little known in environmental circles, and he has made no known overtures to conservation activists or environmental organizations. Consequently, while virtually any thinking environmentalist would probably vote against Mr. Rudd on the basis of his efforts to help gut the Clean Air Act alone, it is not clear what we would be getting should Mr. Early win.

In the newly established 5th District (consisting of northern and eastern Tucson, as well as all of the rest of southeastern Arizona) environmental prospects are much more optimistic. No clear environmental choice has developed between Republican primary winner, state senator Jim Kolbe, and well-known and respected Bisbee attorney, Democrat Jim McNulty. AWWW - Arizonans for Quality Environment - rated both candidates as "acceptable" but with reservations.

**TOM BAHTI
INDIAN ART SHOP**



**1708 E. SPEEDWAY
TUCSON**

Both men seem capable and sincere, and both seem inclined to protect clean air, clean water, and to be sensitive to land use and other environmental issues. However, in several meetings with environmentalists, Mr. McNulty seemed very defensive on many environmental matters, and also seemed very ill-informed on numerous conservation issues as they affect the Federal government. McNulty also seemed set in a number of approaches which environmentalists have found to be non-productive in their recent dealings with Congress. Mr. McNulty is often described as a close associate of Mo Udall, but Mr. Udall's environmental acumen seems not to have rubbed off on Mr. McNulty, at least not thus far.

Mr. Kolbe has been very helpful in recent years in the state legislature, and has developed a reputation as a man who will listen with interest, even if he is in disagreement with you. In his AWWW interview, however, Kolbe came across as taking the position that there are no problems in the EPA or the Interior Department due to the leadership of those agencies by Ms. Gorsuch and Mr. Watt. In a private conversation, Mr. Kolbe explained that as a junior congressman from a new district, he could expect little initial success if he were to promise to go to Washington to slay those particular environmental dragons, but that he was certainly sensitive to the problems environmental interests were having with those two agencies.

Environmental positions probably will be an issue in this race, since the outcome will depend largely on how Mo Udall's former constituents will vote. Moreover, Pima county is the only part of the state where earlier polls indicate environment is a major issue among voters. Although Kolbe's superior campaign organization and precinct worker system gets much of the credit for his astounding 2 to 1 victory over well-known Pima County Supervisor Conrad Joyner, the latter's recent and very unpopular pro-development rezoning votes certainly cost him heavily in the affluent foothills sections of District 5. However, both candidates seem to avoid environmental issues in their rhetoric.

This race will probably see environmental activists working hard for their choice, and while environment votes will probably not be the deciding factor in the outcome of this election, liasons will probably be made which will bear good relations with whomever of these two men goes to Congress.

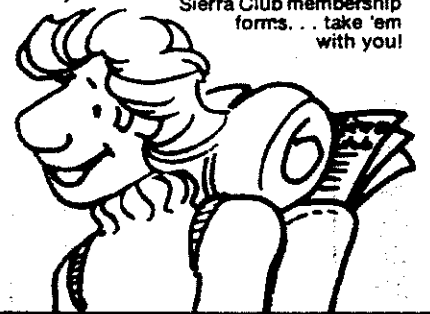
In Arizona's U.S. Senate race, incumbent Senator Dennis DeConcini was a factor in senate passage of the Alaska Lands bill, and has been helpful on a few other occasions as well. He is currently a co-sponsor for S.2801, the Wilderness Protection Act.

But various Club members have expressed great frustration in dealing with various members of his staff, and his main reputation is one of "waffling" on many environmental issues where his leadership would have been more desirable course of action. DeConcini's Republican challenger, state senator Pete Dunn has no particular environmental track record on which to base an opinion. Dunn is inextricably associated with the conservative Maricopa County legislative establishment, which is as a whole very unsympathetic to conservation and environmental concerns.

The "green vote" will probably not play much of a role in deciding between Dunn and DeConcini, notwithstanding Senator DeConcini's behind-the-scenes efforts to court environmentalists such as the Sierra Club, and relations continue to be cordial. His reluctance to make commitments has led activists to put their election activity energies into other campaigns. Senator Dunn, however, seems unaware that there even is a "green vote" phenomenon.

**Put One In
Your Pack
Jack!**

Sierra Club membership forms... next time you're on an outing, be sure you have them with you. So many times, friends express interest in the Sierra Club, but for lack of a membership form, a potential membership is put off until a later day... or forgotten entirely. Sierra Club membership forms... take 'em with you!



Your help, and the help of others like you across the country can have a significant effect on the way Sierra Club is perceived. Tell a friend or hiking partner, talk to car pool people bosses, relatives, your dentist! You get credit for each new member and the Palo Verde group is offering tickets to the annual Chapter Dinner to be held in Tucson in the Spring.

MEMBERSHIP FORM

| MEMBERSHIP CATEGORIES | | |
|-----------------------|--------------------------------|--------------------------------|
| | Individual | Joint |
| Regular..... | <input type="checkbox"/> \$ 25 | <input type="checkbox"/> \$ 29 |
| Supporting..... | <input type="checkbox"/> 40 | <input type="checkbox"/> 44 |
| Contributing..... | <input type="checkbox"/> 100 | <input type="checkbox"/> 104 |
| Life..... | <input type="checkbox"/> 750 | <input type="checkbox"/> - |
| Senior..... | <input type="checkbox"/> 12 | <input type="checkbox"/> 16 |
| Student..... | <input type="checkbox"/> 12 | <input type="checkbox"/> 16 |
| Junior..... | <input type="checkbox"/> 12 | <input type="checkbox"/> - |

All dues include subscription to Sierra (3.00) and chapter publications (1.00).

New Member Name: _____
Address _____ Phone _____
Zip _____

Gift Memberships: If you are giving this membership as a gift, please enter your name below (we will send a special gift card in your name):

Donor Name _____
Address _____ Phone _____
Zip _____

Check here if you would like to be billed for renewal of this gift membership next year. Recommended for membership in the Sierra Club by:

Name: _____ Membership No. _____
Chapter/Group _____

SIERRA CLUB
Department H808 P.O. Box 7959
San Francisco, CA 94120

Outings (cont. from page 8)

the Chapter. There will be a Chapter Executive meeting and a Chapter conservation meeting. We will also have a number of outings being led, varying from easy to strenuous. One of the nicer and easier trips will be going to Bull Pasture. For those so inclined the trip will continue on to the summit of Mt. Ajo, highest point in the Park. Other possible trips will be Alamo Canyon, Arch Canyon and Kino Peak. For those not wishing to hike the Park offer many scenic loop drives with accommodations for picnics and sightseeing. Trip limit for group campsite is 30. Stores are required for cooking. No wood gathering allowed in the Park. For reservations and more information call Chapter Outings Chairman, Jim Vaaler. Most people will likely arrive Friday night however for those who may be coming from the northern part of the state we have also reserved Thursday in case you want to make a long weekend of it.

Nov 21 (SUN) "B" Granite Mountain Summit Dayhike. Beginning near Granite Basin Lake we will climb among Manzanita and Ponderosa Pine to the rocky summit. Route begins on-trail but is off-trail through thick but passable Chapparal for the last mile or so. May involve some minor non-technical rock climbing depending on route taken. Elevation gain 2,000 feet, summit elevation 7,626 feet. Hike six miles round trip. Drive 100 miles OW from Phoenix. Trip limit 20. For information and reservations call Jerry Nelson 274-4367 days or 279-4668 evenings.

Nov. 24-28 "B" Thanksgiving Hike. Our Thanksgiving hike will take us to explore the Havasu Canyon area with its remarkable falls, pools, and access to less frequently visited parts of the Colorado River. We will camp at Hualapai Hilltop (no fee) on the 24th, then hike the 7-8 miles in to the campground near Supai on the 25th. Trip participants will share in the food planning, portage, and preparation for the Thanksgiving feast planned for later that day. Friday and Saturday will be spent in day hikes in the area with the hike out on the morning of the 28th. Temperatures on the Hilltop will be approximately 27°F low to 52°F high; at the Supai Village area 46 F low to 68 F high. Distance OW from Yuma 322 miles, ride sharing is planned. COST: \$8 per night per person in the campground run by Havasupai Tourist Enterprises. Trip limit is 10 no children under 16. Reservation deadline is Nov 3rd. Trip leader Pat Kenyon, 726-1347, call before 9:00pm.

Nov. 26-28 (FRI-SUN) "B" Aravaipa Backpack. Enjoy Thanksgiving in beautiful Aravaipa Canyon. Fall colors should still be plentiful at this time of year, especially the Cottonwood trees. Aravaipa Canyon was the first piece of Bureau of Land Management land to receive wilderness designation. Stoves are required for cooking. Water purification should also be taken. For reservations, meeting time and place call your leader Ken McGinty at 265-4894 or write Ken at 2221 W. Turney, #D Phoenix, Az. 85015. Drive 100 miles from Phoenix, OW.

DEC. 4-5 (SAT-SUN) "C+" Coon Creek Chalk Canyon Backpack. Boulder hop down Coon Creek to the Salt River. We will camp in a part of the river being considered for Wild & Scenic Rivers designation. We will explore

Chalk Canyon before hiking back to the vehicles on Sunday. The leader has not covered the route so consider the trip to be exploratory in nature. Hike 6-8 miles, drive 120 miles OW from Phoenix. Minimum age is sixteen. Trip limit is fifteen. Stores required for cooking. Carry 2 qts. water and water purification. For reservations meeting time and place call your leader Dave Mowry at 249-2625.

Dec. 4-5 (SAT-SUN) "A" Burro Creek Backpack. This rich riparian Canyon is one of the Bureau of Land Management's finest wilderness study areas. It is in this area that elements of the Mohave and Sonoran deserts intermingle to produce some truly unique floral surroundings. For more information, reservations, meeting time and place call your Leader Ken McGinty at 265-4894 or write Ken at 2221 W. Turney, #D. Phoenix, Az. 85015. Drive 175 miles OW from Phoenix. Trip limit and age limit at leader's discretion. Carry 2 qts. water per person and water purification. This will be a strenuous trip.



MOVING?

Attach present mailing label here and write in new address below.
(Please allow 4-6 weeks processing time.)

Name _____
Address _____
City _____
State _____ Zip _____

MAIL TO:
The Sierra Club
530 Bush Street
San Francisco, CA 94108

Health Warning

for Hikers

BACKPACKERS DIARRHEA ON THE INCREASE IN COLORADO

by Rae Pimley Haynes
former editor, Canyon Echo

"Backpackers' diarrhea" -- scientifically it's known as giardiasis -- has become more prevalent in Colorado, according to a recent Associated Press report.

One of the most significant facts about the giardia organism -- it's a parasite, not a bacterium -- is that water purification tablets and solutions commonly used by backpackers won't touch it.

Diana Matthews, intestinal disease specialists with the Maricopa County (Arizona) Health Department, said that when using surface (stream) water, it should be boiled for 20 minutes. Then add the iodine. "That should be effective," she said.

The high incidence of giardiasis is thought to be due to hikers contaminating mountain streams and a growing beaver population. The Associated Press reported beavers were responsible for a giardiasis epidemic in Washington state in 1976.

There were 400 cases of giardiasis reported in Colorado last year, according to Barry Gaspard of the Colorado Department of Health, and that was "just the tip of the iceberg." Some asymptomatic persons may carry and transmit the organism.

Mrs. Matthews said the illness is found in Maricopa County, but in the urban areas it is usually spread by unsanitary food preparation practices. The parasite's cysts (eggs) may be transferred by the unwashed hands of the person handling food, she explained. Antibiotics are ineffective against the organism. A very special prescription medication is required.

Hikers planning to head for Colorado may want to get an update on the incidence of giardiasis in the area they plan to visit before setting out.



DIANA'S TOURS
offering a unique experience in
SEASHORE BIOLOGY

An enjoyable 3 days and 2 nights of exploring the living things of the scenic shores of the northern Gulf of California (Puerto Peñasco, Mexico) with a marine biologist guide. Season, Oct. and Nov. Groups limited to 9. Call after 5pm for more information, or write P.O. Box 37092, Tucson, AZ 85740

(602) 831-0853 or 625-6619


JOHN HALL
ASSOCIATES, INC.
COMPLETE REAL ESTATE SERVICE

1250 E. BASELINE RD., SUITE 101
TEMPE, ARIZONA 85283


CARL GOLDBERG
REALTOR ASSOCIATE

Member of Sierra Club

BUS. 839-5827
RES. 897-1899



backpacking—x-c skiing—mountaineering
technical mountaineering instruction
R.M.S.I.A. certified nordic ski instruction



the alpineer

bruce grubbs and larry coats 774-7809
406 south beaver st. flagstaff, arizona 86001

OUTINGS

OUTINGS POLICIES AND RULES

1. Trip leader has absolute authority to question trip participants as to the equipment, conditioning and experience before the trip and also during the trip.
2. All Sierra Club trips will have a **maximum** number of 20 persons and a **minimum** of 4 persons.
3. On easy outings where deep water swimming will be done, one person will be appointed to watch trip participants. The buddy system will be used and one throwable device will be taken along in event of an emergency.
4. On more difficult outings where swimming will be done, 2 means of floatation per person will be required when swimming.
5. Red Cross course in first aid is required for all trip leaders. Equivalent courses are also accepted. Cards should be current.
6. Equipment checks may be made on any outing, either at the meeting place or any time on the trip. Those not having proper gear may be turned back.
7. No guns, radios or pets on Sierra Club outings.
8. Sierra Club liability insurance covers leaders only.
9. Each person is responsible for their own first aid equipment. If you are injured, however slightly, notify the leader immediately.
10. Persons leaving the trip, with or without the leader's permission, are considered to be on their own until they rejoin the group.

OUTINGS RATINGS

Outings are rated for degree of difficulty and risk by the leader. As a guideline, outings are classified as follows:

- "A" - More than 16 miles or more than 3,000 ft. elevation change.
 "B" - 8 to 16 miles and between 1,500 to 3,000 ft. elevation change.
 "C" - Less than 8 miles and less than 1,500 ft. elevation change.
 "D" - Less than 3 miles and less than 500 ft. elevation change.

ABOUT RESERVATIONS AND CARPOOLS

"Most outings sponsored by the Chapter are on a reservation basis. This policy guarantees your participation in an outing you are interested in, and enables the leader to select a group size that he can manage and will not be detrimental to the area visited.

In order to help your leader plan the trip, please 1) make your reservation as early as possible, and 2) don't make a reservation unless you intend to keep it.

Donations are accepted from all participants. The usual donations are: 50¢ per day per member, and 75¢ per day per non-member. The money is collected by the leader and deposited with the sponsoring group treasurer for allocation as determined by the group executive committee.

In order to conserve resources, trip participants are strongly urged to form carpools on a shared expense basis. A minimum of 3¢ per mile for day hikes is recommended, car camps and backpack trips may be somewhat more. These donations for fuel for the driver's car will be at the driver's discretion. Reasonable wear and tear on driver's vehicle may also be included. Mileage round-trip should be figured beforehand.

Oct. 2 (SAT) "B". San Francisco Peaks Bomber Bike Tour. Come join us on a bike tour on the back roads and jeep trails north of Flagstaff. This tour will begin in Hart Prairie and end in downtown Flagstaff. The trip length is approximately 20 miles; there will be some short steep climbs, but will be generally down hill. A "mountain bike" (balloon tires and low gear ratios) is recommended, however any sturdy bike will work! We will meet on Saturday at 9:30 a.m. at the Flagstaff Adult Center (located at the end of West Birch Street.) For more information and reservations, call Dawson Henderson at 774-1571.

Oct. 2-3 (SAT,SUN) "B" San Francisco Peaks Carcamp. We will be hiking into the Inner Basin and around the north side of the peaks to Aubineau Canyon. Autumn color should be tremendous, this is a great area for aspens. Elevations will be 8,500-10,500, feet. Be prepared for a cold night. Drive 160 miles OW from Phoenix. For reservation call George Horn at 273-6947.

Oct. 9-10 (FRI,SAT,SUN) "A" Grand Canyon Outing. The hike will start on the South Rim at Apache Point and proceed to Royal Arch and possibly Elves Chasm. The return hike will be by the same route. For meeting place, time, reservations, or for further information call Tony Merten at 779-1870. (before 7:00 a.m. is best).

Oct. 10 (SUN) "C" Horton Creek Cleanup and Dayhike. We will do a very thorough cleanup of this popular area. Families and children are welcome. Bring a lunch and 2 liters of water for each person. We will

leave at 7:30 a.m. from the SE corner of Scottsdale Road and Shea Blvd. behind Mags Hambun. Non-drivers please bring at least \$6 for gas. For further information, contact your leader Peter Curia at 254-5736.

Oct. 16, 17 (SAT-SUN) "B" Cuyamaca Rancho State Park-Granite Springs Trail CampBackpack in on Sat. and spend the night at the trail camp. Optional Sun. trip into Julian, hike out on Sun. Group limited to 16, no fires-bring stoves, carry water for the trip in only. 140 miles OW from Yuma. Call Hal Hallett 726-8135 or Kathryn Michel 627-2410 for reservations and information.

Oct. 16 - 24(8 days) "B" Escalante Utah Exploratory Trip. Will drive the length of the Hole-In-The-Rock Road and backpack 3 to 4 days in Hurricane and Coyote Gulch. Leader has not been there before. This is a water trip, wading may be required. Call Brigitte Mueller after 7:00 p.m. at 931-2122 for information.

Oct 16-17. "B" Hell's Gate Backpack We will be hiking in the Hell's Gate Wilderness Hiking Area which is the canyon complex going from Bear Flat to Gisela along Tonto Creek. We will hike in on the confluence of Haigler and Tonto Creeks. The next morning we will hike out via the Hell's Gate ridge trail. Spectacular views will be available on the whole trip as both trails are high ridges. A short car shuttle will be necessary. For reservations, meeting time and place call your leader Jim Vaaler at 840-3547.

Oct 23-24 (SAT-SUN) "A" Grandview Hance Creek Backpack. Enjoy the Grand Canyon on this highly scenic secondary trail. We will drop down to Horseshoe Mesa and then down the eastern descent off Horseshoe Mesa to our camp in Hance Creek. Drive 250 miles

THE GREAT BOTTLE BILL OUTING! WEEKENDS, OCT. 23, 24, 30, 31

On November 2, Arizonans will go to the polls to vote on Proposition 200, the Arizona Bottle Bill. In an effort to educate voters on this issue, the ABB Campaign will be delivering an informational tabloid door-to-door to as many homes as we can the last two weekends in October, and we invite you to participate in this Great Bottle Bill Outing. Come out and walk the streets of your city for a few hours Oct. 23, 24, 30 and 31. Admittedly, it may not be as scenic as hiking in the Rincons or the Grand Canyon, but think of it -- no car pools to worry about, no campground fees, etc! So put on your hiking boots, strap on your backpack and join us. To sign up, call 795-2900 in the Tucson area, 242-8152 in the Phoenix area. Thanks for your help

OW from Phoenix, hike 20+ miles round trip. Age limit 15, trip limit 10. Leader is Slim Woodruff. For reservations and information call Brad Houston at 943-5689.

Oct 23,24 (SAT-SUN) "A" Mogollon Rim-Highline Trail. This high country trail parallels the Rim a few hundred feet below the ledge. Trail meanders through Ponderosa Pine and has several springs and streams along the way. Good views of Tonto Basin and fall colors. Drive 100 miles OW from Phoenix. For reservations call Bob Flores, 839-3403.

Oct.31 (SUN) "C" Salt River Mountains, South Mountain Dayhike. This will be a good hike for map reading experience and an off trail hike for beginners. The Lone Buttes Quadrangle map may be obtained in any hiking or map shop. Hike is 6 miles- return. Drive 5 miles from Ahwahtukee. Trip limit is 20 No trail - we will ascend about 1000 feet and then descent 1000 feet. For reservations, meeting time and place call your leader, Joe Mackey at 254-1821.

Oct. 30-31 "B+" Sierra Ancha Wilderness Backpack. We will be taking a grand tour of the Sierra Ancha Wilderness. Part of the group will start up the north fork of Parker Canyon while the rest of the group will start on trail number 135 just off Cold Water Canyon on the Cherry Creek Road. The two groups will meet near Center Mountain, possibly at Knool's Hole Spring or the Switch back Spring. Fall colors should be visible at this time of the year. For reservations, meeting time, and place call your leader Jim Vaaler at 840-3547. Tom Wright will be the assistant leader on this trip. A portion of the area we will be hiking in was investigated by a uranium company from Colorado two years ago.

Nov.5-7 (SAT-SUN) "A" Safford-Morenci Trail Backpack. The Safford Morenci Trail is an old wagon road, built in 1874. This 15 mile long trail crosses rugged terrain and ranges in elevation from 3,700 to 6,000 feet. Drive to Safford early Sat. park our cars at the west trailhead and be shuttled to the east trailhead. Trip limit 10, age limit 16 or at leader's discretion. Drive 175 miles OW from Phoenix. For reservations and information call Ken McGinty at 265-4894 or write 2221 D W. Turney Ave. Phoenix, Az. 85015.

Nov. 6-7 (SAT,SUN) "A+" Waterholes Canyon. Descend into one of the narrowest canyons in the west. Experience the slot, the corkscrew, and the dreaded green slime pool. Prior rappel experience is a prerequisite. Bring your rappel gear, two Prussicks and a hard hat. The Leader may exercise the right to inspect climbing gear prior to leaving Phoenix. There will be a minimal charge for expendible equipment. Drive 300 miles OW from Phoenix. Minimum age is eighteen. Trip limit is eight. Stores required for cooking. Carry 4 quarts water and water purification. For reservations, meeting time and place call your leader Dave Mowry at 249-2625.

Nov. 6.7 (SAT-SUN) "B" Solome Creek Backpack. This will be an exploratory trip into one of the "RARE II" areas proposed by the Forest Service for wilderness designation. They dropped this recommendation so the Sierra Club will include it in our own proposal; especially since it contains great opportunity for primitive recreation and solitude. Hike starts from the dirt road to Young, 20 mi. N of Roosevelt Lake. Campsite has water, and cooking stoves are required. Trip limit is 20, age limit 15. Drive 150 miles OW from Phoenix, hike is 15 miles. for further information contact John Sarna, 981-0169, evenings.

Nov. 11-14 (THURS SUN) "C-A" Organ Pipe Cactus National Monument Chapter Wide Outing. The elections are over and Thanksgiving is still two weeks away. All Chapter members are welcomed to attend this outing and have a chance to meet and talk to the people who run