



Trajectory
Energy
Partners

Utility Scale Project Summaries



Blackberry Solar - Overview

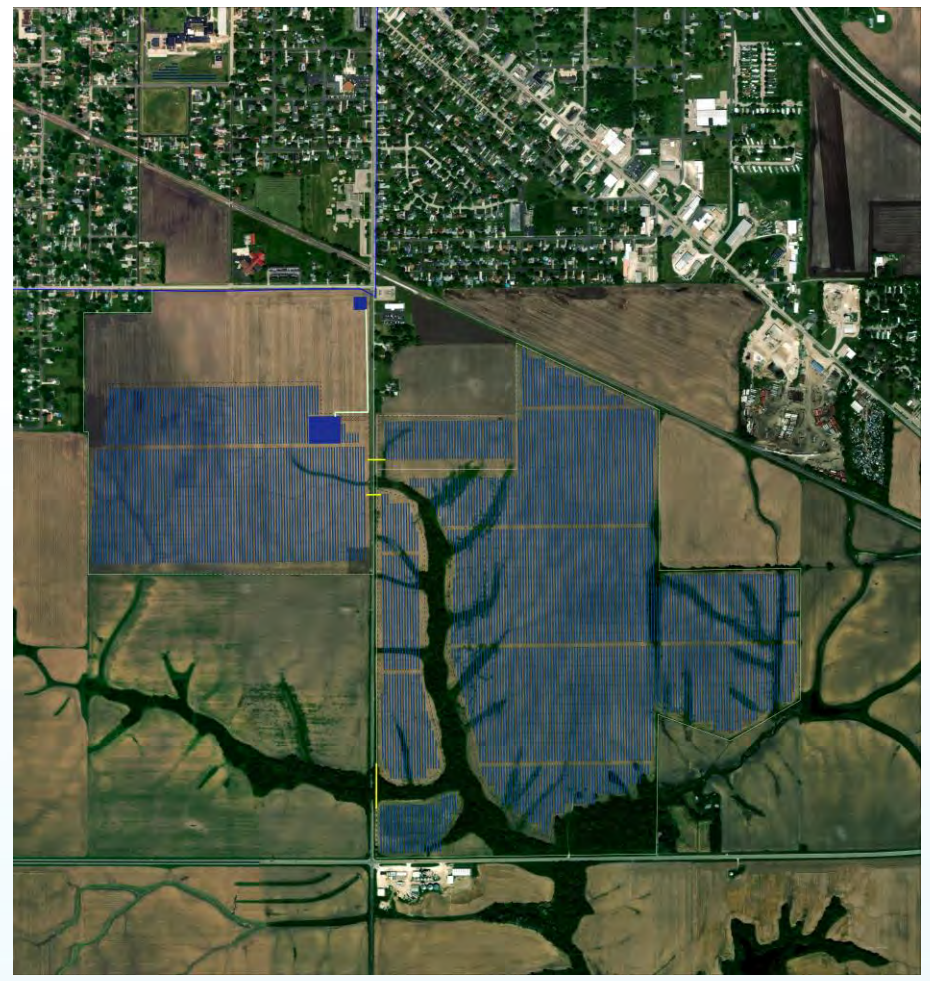
Blackberry Solar is a 50MWac utility scale solar project that will be interconnected to an Ameren 69kv utility line in Knox County. The project will utilize a single-axis tracker racking system with panels that follow the arc of the sun during the day. The project sits on approximately 380 acres and is located primarily in unincorporated Knox County, southeast of Galesburg. The northwest side of the project will utilize native vegetation and privacy fencing for screening.

System Size: 50MWac

Total Site Area: 380 acres

1st Year Property Taxes: \$300,000

Total Property Taxes over 35 years: \$5 Million



Blackberry Solar - Details



| | |
|---|---------------------|
|  | |
| Project Name: Blackberry Solar | |
| Facility Location: 40.9282°N, 90.3391°W | |
| Project County: Knox, IL | |
| | |
| Revision: A-1 | Date: 12-01-2021 |
|  | |

Cornwell Solar - Overview

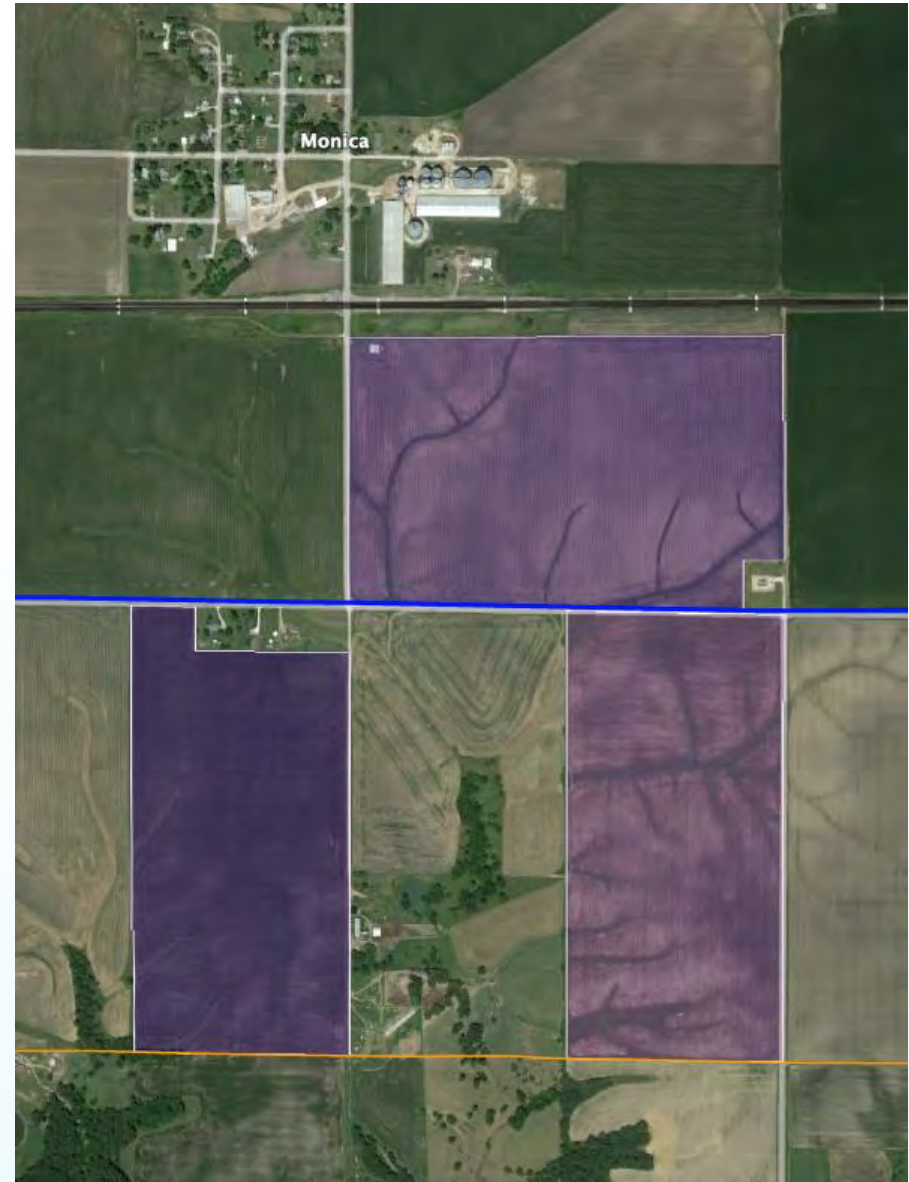
Cornwell Solar is a 40MWac utility scale solar project that will be interconnected to an Ameren 69kv substation in Peoria County. The project will utilize a single-axis tracker racking system with panels that follow the arc of the sun during the day. The project is located in unincorporated Peoria County, near Monica.

System Size: 40MWac

Total Site Area: 250 acres

1st Year Property Taxes: \$270,000

Total Property Taxes over 35 years: \$4.6 Million

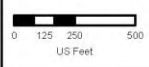


Cornwell Solar – Details



P
Cornwell Solar
Facility Location:
40.9179°N, 89.8169°W
Project County:
Peoria, IL

Drawing Designation:
SUP Layout
Revision: A-1 Date: 12-01-2021



Bunker Solar - Overview

Bunker Solar is a 40MWac utility scale solar project that will be interconnected to an Ameren 69kv utility line in Tazewell County. The project will utilize a single-axis tracker racking system with panels that follow the arc of the sun during the day. The project is located in Tazewell County, near Marquette Heights.

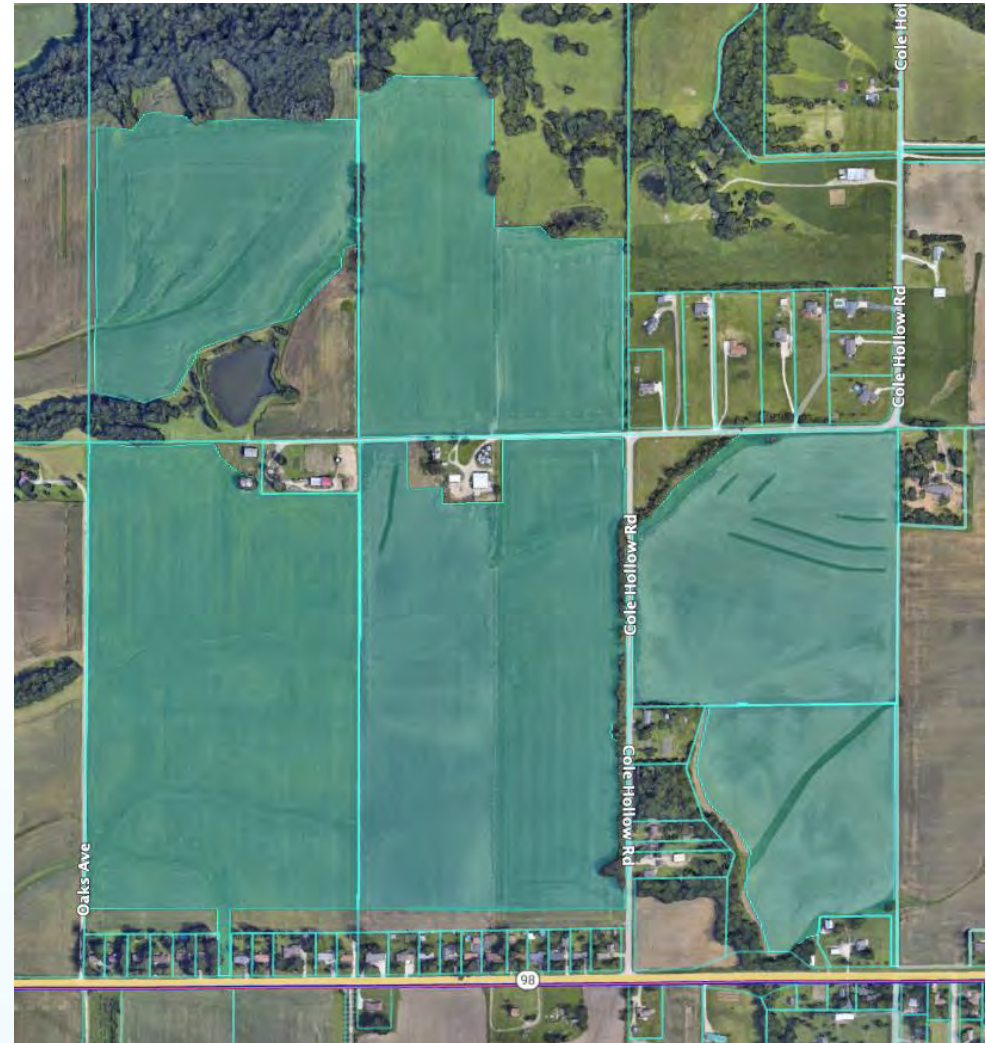
System Size: 40MWac

Total Site Area: 260 acres

1st Year Property Taxes: \$228,000

Total Property Taxes over 35 years: \$3.8 Million

| DISTRICT | RATE | PAYMENT |
|-----------------------|----------|-----------|
| GRADE SCHOOL 108 | 3.453400 | \$106,200 |
| HIGH SCHOOL 303 | 2.305180 | \$70,900 |
| TAZEWELL COUNTY | 0.538390 | \$16,600 |
| COMMUNITY COLLEGE 514 | 0.486650 | \$15,000 |
| CENT GRVLND FIRE | 0.319170 | \$9,800 |
| GROVELAND RD & BR | 0.233740 | \$7,200 |
| GROVELAND TOWNSHIP | 0.075110 | \$2,300 |
| TOTAL | 7.411640 | \$228,000 |





Important Dates

| | ZBA Hearing | ZBA Hearing Location | County Board Meeting | County Board Meeting Location |
|------------------|---|--|-----------------------------|--|
| Blackberry Solar | February 2, 2022 City Parcel Planning and Zoning Commission: January 11, 2022 | Knox County Assessment Office 121 S Prairie St., Suite 1 Galesburg, IL 61401 | February 23, 2022 | Galesburg City Hall – Council Chambers 55 W Tompkins St Galesburg, IL 61401 |
| Cornwell Solar | February 10, 2022 | County Courthouse 324 Main St County Board Room 403 Peoria, Illinois 61602 | March 10, 2022 | County Courthouse 324 Main St County Board Room 403 Peoria, Illinois 61602 |
| Bunker Solar | March 1, 2022 | Tazewell County Justice Center 101 South Capitol St. Pekin, IL | March 30, 2022 | Tazewell County Justice Center 101 South Capitol St. Pekin, IL |

Ground Mounted Solar System

These projects will utilize a single axis tracker system where the solar panels are placed on a controller that follows the arc the sun takes throughout the day, producing more energy than stationary panels.



Single axis tracker system in winter.



Example of single axis tracker system in summer.



Fencing Details

These projects will be surrounded by a 7' chain link fence. In areas near residential homes, fencing with privacy screening will be installed.

Example of chain link fence and interior road around solar project.



Example of chain link fence with privacy screening.



Screening Area Options

Where applicable, a vegetative buffer with native tall grass prairie species and low-growing trees will create a natural screening area in the northwest corner of the projects.

Big Bluestem Grass



Indian Grass



BOBCAT WILLOW

Salix discolor

Small tree/ large shrub, native, open areas, full sun, prefers moist soils



SILKY DOGWOOD

Cornus amomum

Medium Shrub, deciduous, native, open areas, some shade, prefers moist conditions



SMOOTH SUMAC

Rhus glabra

Medium shrub, deciduous, native, open areas, full sun, prefers well drained soil





Kiersten Sheets

Project Development Manager
Trajectory Energy Partners

Cell: 309-573-7307

ksheets@trajectoryenergy.com

www.trajectoryenergy.com

