



North Richmond Shoreline Multi-Benefit Project Planning

Sierra Club Webinar – May 27, 2021

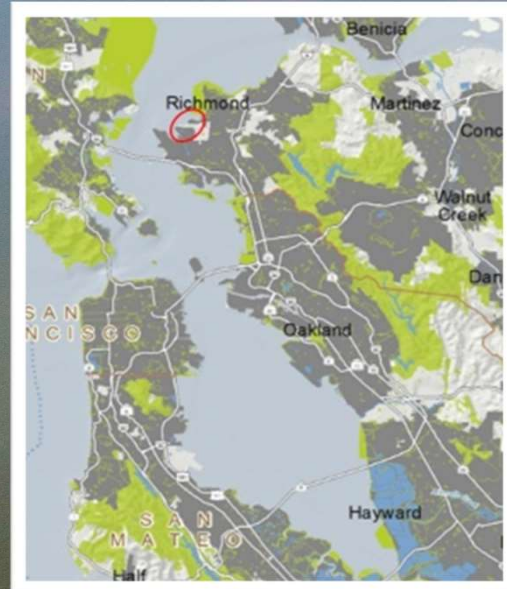


San Francisco
ESTUARY PARTNERSHIP

Presentation Overview

- Review Project Setting & Goals
- Provide Project Status Update
- Discuss Collaborative Approach
- Review Recent History of Community Participation

Partnership in Action







China Camp (5.5 miles)
Point San Pedro (3.05 miles)

Burdell Mountain (16.14 miles)

Point Pinole (2.6 miles)

WILDCAT MARSH & LANDFILL LOOP TRAIL



The story of this portion of the Bay Trail is one based on the very essence of today's meaning of "green." Non-existent until now, the trail incorporates fantastic views of San Pablo Bay, Wildcat and San Pablo Creeks with remarkable examples of industrial water conservation and reuse, resource recovery, electrical generation, recycling and recreation.

Make sure to visit the many interpretive exhibits along the trail which tell the story of this formerly little-known part of Contra Costa County's shoreline.

Map Legend

	Bay Trail suitable for walking, biking, roller skating & wheelchair access
	Bay Trail of compacted aggregate
	Distance markers and mileage between two markers
	Future Bay Trail
	Connector Trail
	Parking
	Drinking Water
	Picnic area
	Restrooms

What to bring on the trail:

- ▶ Water
- ▶ Snack or picnic lunch
- ▶ Binoculars
- ▶ Birding book
- ▶ Camera

For school tour information call recycleroute 510-215-3125.



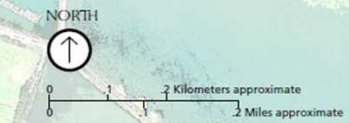
Who Lives Here?

This new land form has attracted flora and fauna characteristic of the Bay Area shorelines. Salt tolerant plants as well as marshbirds, shorebirds and raptors co-exist with mammals along the shoreline.



Mount Tamalpais West Ridge (11.45 miles)
Point San Pablo (1.82 miles)

San Pablo Ridge (1.5 miles)



Design: © 2011 Spokewise

Sea Level Now

0' SLR @ MHHW
(Adapting to Rising Tides data)

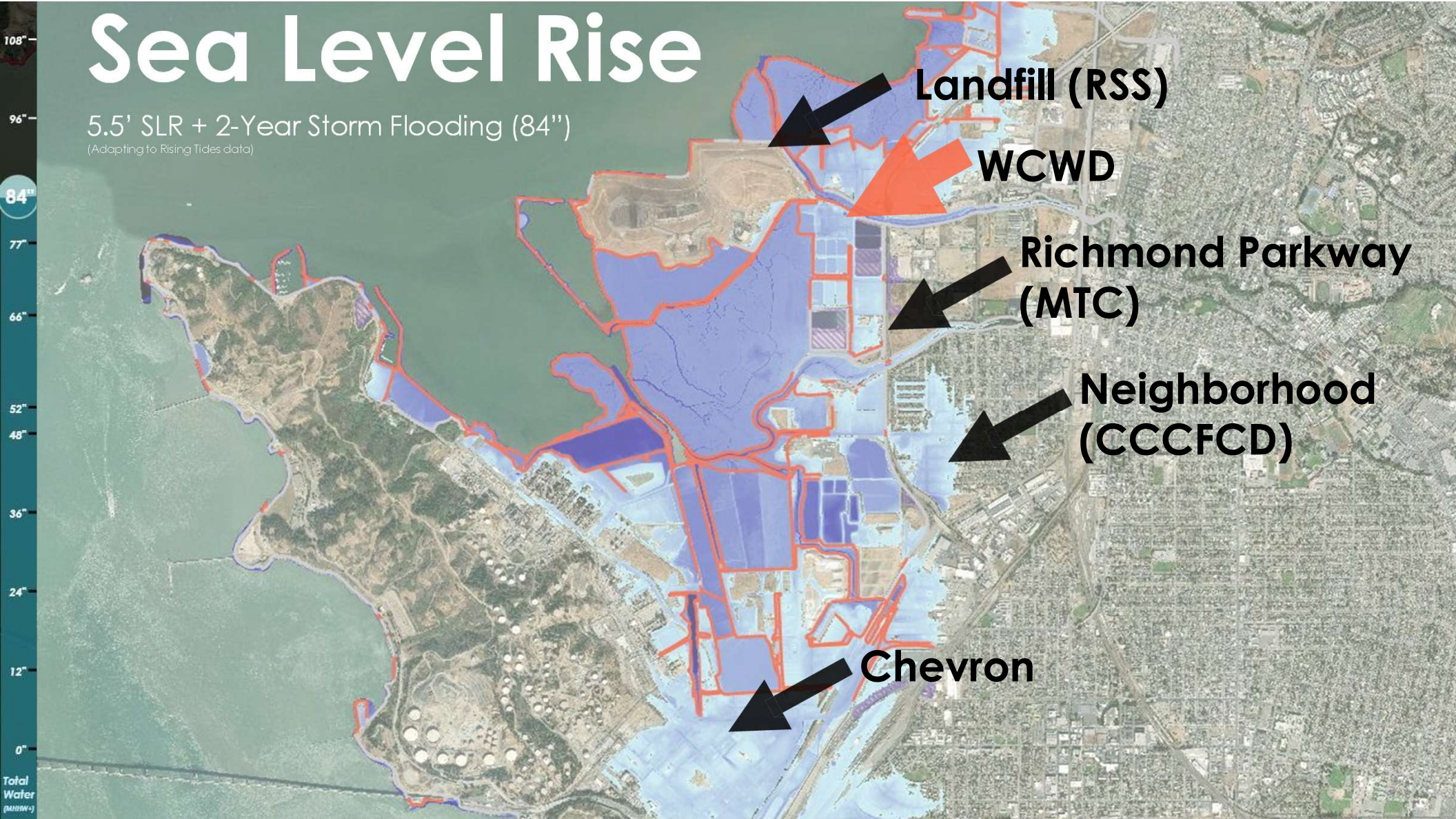


0'
Total Water
(MHHW+)

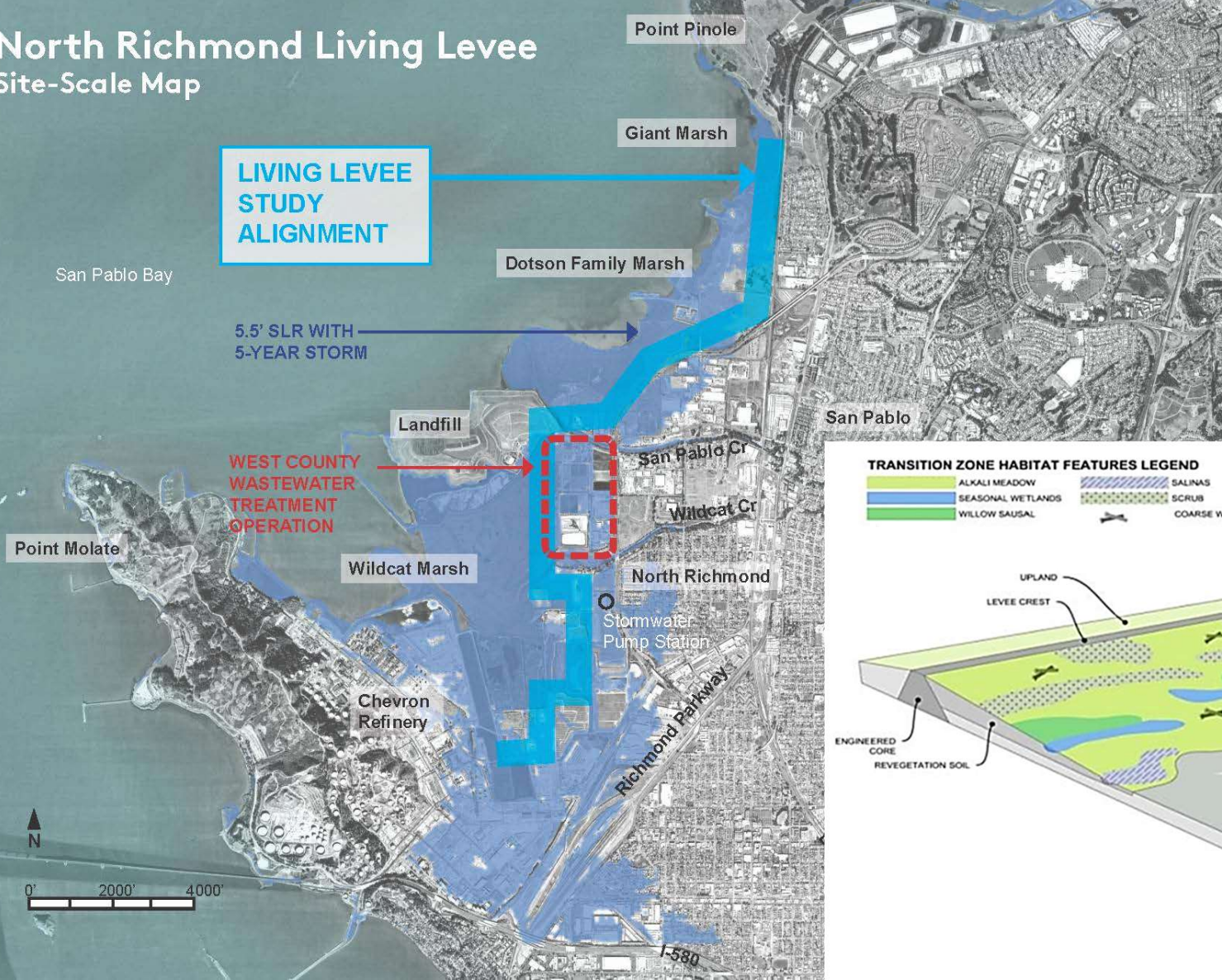
Sea Level Rise

5.5' SLR + 2-Year Storm Flooding (84")

(Adapting to Rising Tides data)

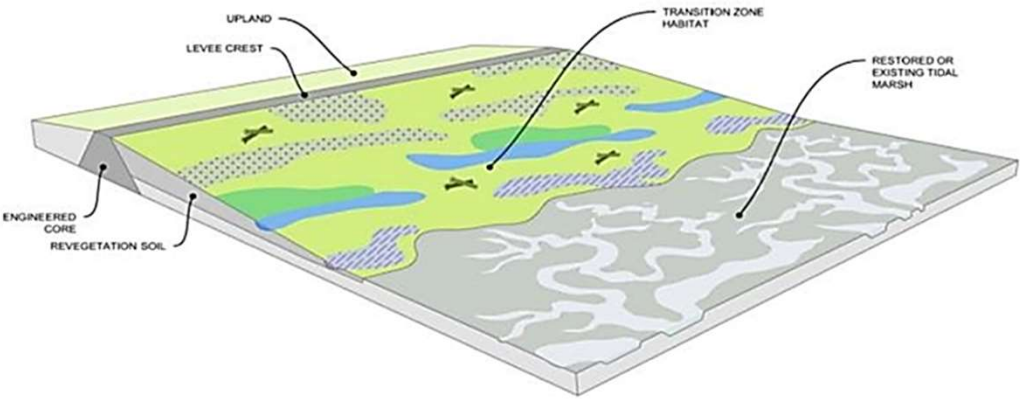


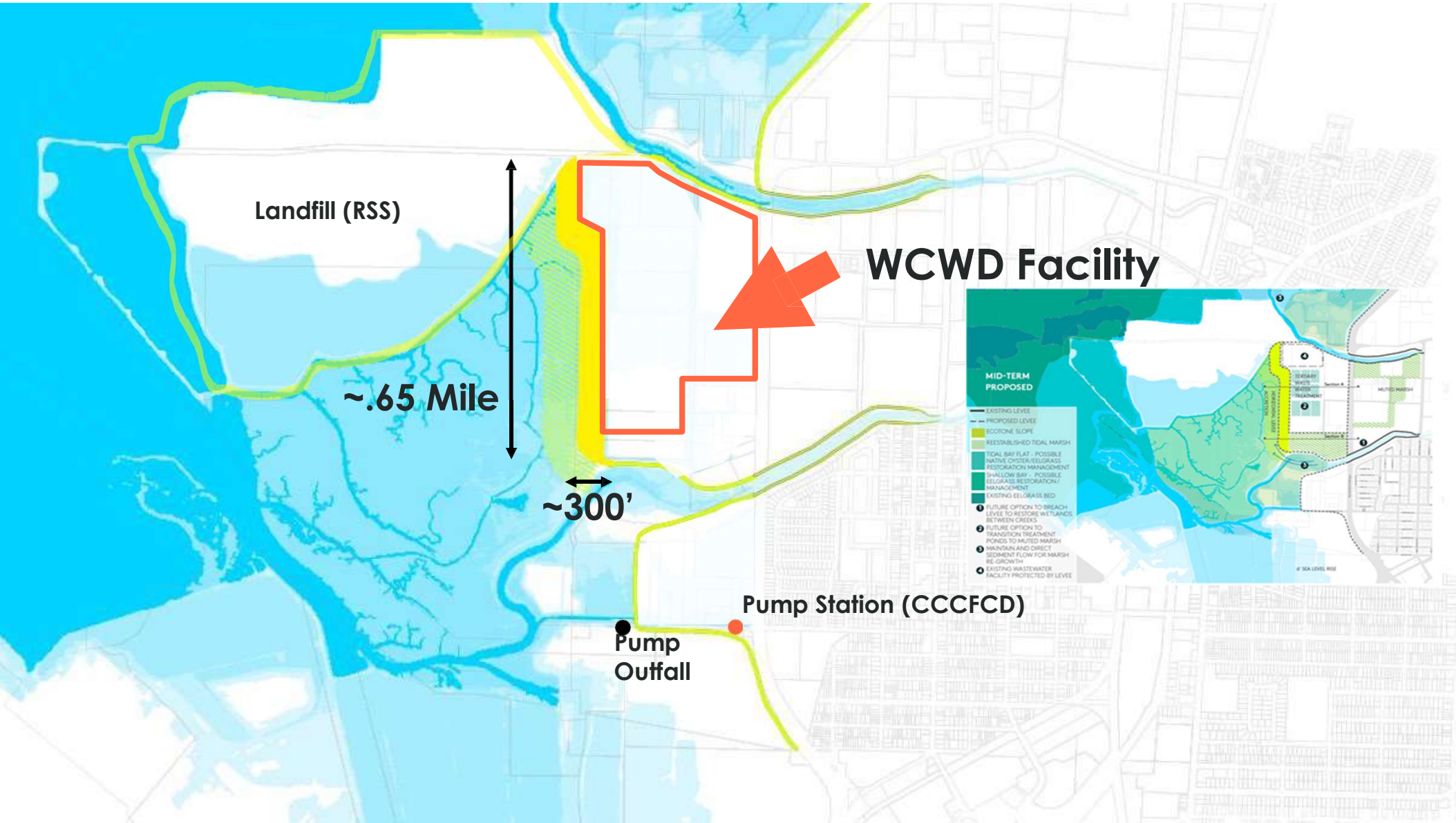
North Richmond Living Levee Site-Scale Map



TRANSITION ZONE HABITAT FEATURES LEGEND

	ALKALI MEADOW		SEASONAL WETLANDS		SALINAS
	WILLOW SAUSAL		SCRUB		COARSE WOODY DEBRIS





SF Bay Restoration Authority Project Status

- Grant Executed
- Work Plan Submitted
- Request for Proposals
- Stakeholder Meetings
- Stakeholder Charter



An aerial photograph of a large body of water, possibly a bay or estuary, with a green overlay at the bottom. The water is dark blue, and the surrounding land is a mix of green fields and brownish areas. In the distance, a long line of wind turbines is visible against a blue sky with light clouds. The green overlay at the bottom contains the title text in white.

Community Leadership & Participation in Shoreline & Watershed Planning



San Francisco
ESTUARY PARTNERSHIP



WILDCAT-SAN PABLO CREEKS WATERSHED COUNCIL

EXPRESS
THE EAST BAY'S FREE WEEKLY

Friday, February 7, 1996 Volume 8 Number 18

After the Flood: The Salvation of Wildcat Creek

By Martha Dow
In June of 1984, writer David Hartigan filed a three-page, 4,000-word report on the fate of one of the East Bay's last relatively natural creeks: Wildcat Creek. *Express*, June 1, 1984. From a report filed on the Berkeley hills, Wildcat Creek winds its way through a variety of environments, ranging from riparian habitat to an urban square where swarming the bay shore the same Chevreton sisters save the community of North Richmond. That the creek had largely eroded artificial channels and massive concrete flood control projects in use. Hartigan reported, 85 to 90 percent of the cultural had interested many environmentally conscious citizens, including Alan La Pointe and Alan Rife of the then-existing Urban Creeks Council, as well as biologists from the East Bay Regional Parks, who

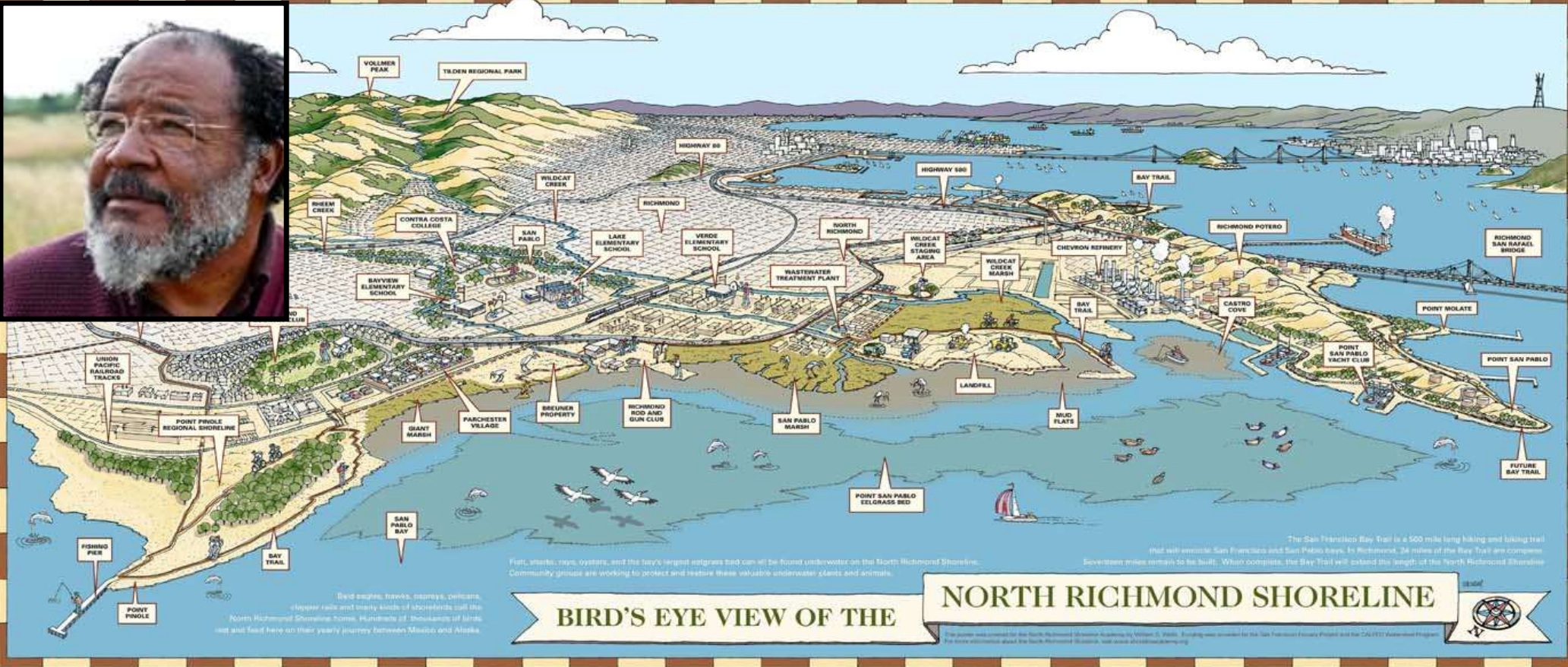
CITYSIDE



is. "This is all you're going to get. Take it or leave it," I told him. "Forget this, man," you don't know who you're talking to. People here have been waiting for some kind of flood control for more than twenty years. If this weren't a hot income area, we'd never have had so much rain. He thought he could just push us around. We want a project that's environmentally sound, and one that is an aesthetic improvement for the neighborhood. Alan Rife and Alan La Pointe of the Urban Creeks Council came to us."



North Richmond Shoreline Open Space Alliance





Regional Transition Zone Mapping & Community Adaptation Strategy Pilot Project, 2016-17

- **Phase 1:** Develop upland transition zone mapping methodology
- **Phase 2:** Apply methodology locally & partner with a vulnerable community to create a vision for sea level rise resiliency focusing on opportunities

San Francisco Estuary Partnership: Climate Ready Estuaries

North Richmond Community Shoreline Vision Project



- Community stakeholder meetings
- Informational interviews with public agencies, community-based organizations, and service providers
- 284 Resident Surveys



San Francisco Estuary Partnership: Climate Ready Estuaries

North Richmond Shoreline Vision Strategies and Actions

Strategy #1: Protect and Conserve Open Space

Strategy #2: Improve & increase shoreline public access and understanding

Strategy #3: Dynamic shoreline uses with compatible community needs

Strategy #4: Restore & enhance a diversity of habitats and living resources

Strategy #5: Build capacity for equity, environment, and economic development among stakeholders



San Francisco Estuary Partnership: Climate Ready Estuaries

Near Term Opportunities

As we adapt to sea level rise in the Transition Zone, there are a number of near-term implementable actions and specific projects outlined in the Vision that are already in various planning stages but have further project development needs (such as community input, funding, final design documents, permits) to advance to implementation.



1 Horizontal levee and Interpretive Center at West County Wastewater District

Explore planning, design, and construction of nature-based shoreline infrastructure, and an associated Environmental education and public outreach programs. The effort is looking at placing a horizontal levee at Wildcat Marsh, adjacent to the Bay Trail, in partnership with the District and SFEPP.

2 Interpretive Center at Point Pinole Regional Shoreline

Engage the public through a new 9,000 sf visitor center that will serve as the primary point of contact for park visitors, with interpretive and educational functions, community facilities, and a regional recreational resource center for the Park District. Site developments include multiple interpretative gathering areas, an amphitheater, trail links, bus drop off, and parking.

3 Bay Trail Gap closures and Richmond Parkway Overpass on Wildcat Creek Trail

Improve access through closing 2.1 miles of Bay Trail gaps on the northern shoreline including: Parkway/Wildcat Marsh Trail on south side of San Pablo Creek; Parkway/Goodrick Avenue; Goodrick Avenue; and Atlas Road/Richmond border.

4 Giant Marsh Living Shorelines

Enhance living resources, including the multi-habitat San Francisco Bay Living Shorelines Project (LSP). The project integrates subtidal habitat restoration of native oyster and native eelgrass beds with designs that test the use of natural structures to buffer and protect adjacent tidal wetland sites, as well as areas of the San Francisco Bay shoreline that are vulnerable to sea level rise and shoreline erosion.

5 Develop and construct renewable energy pilot projects

Generate renewable energy, through a special district that is exploring producing renewable energy in the area. Goals of the project are for the special district to become more carbon neutral and test out a new method of green energy production. The pilot project would use green waste from the area to produce renewable energy at the Green Waste Recycle Yard.

6 Wildcat Creek Fish Ladder Improvements

Realign portions of the environmental low-flow channel of Wildcat Creek (downstream of Verde Elementary School), improve function of the sediment basin, and replace dysfunctional fish ladder immediately upstream of sediment basin.

7 Fred Jackson First Mile, Last Mile Green Street / Watershed Connections Project

Provide urban greening through the North Richmond Watershed Connection, which will serve to create a healthy, walkable, green connection between the San Pablo and Wildcat Creeks in North Richmond. The project will implement coordinated urban greening elements on streets, parks, creek trails, and an urban farm to enhance the health of the creeks and watershed while improving the community's access to their environment.

8 Rheem Creek Realignment through Dotson Family Marsh

Realign and restore about 1/2 mile of Rheem Creek, and connect it with restored Dotson Family marsh to create improved aquatic habitat through the marsh.

PROJECT SITES

RESILIENT
BAY AREA CHALLENGE
BY
DESIGN



Resilient by Design

Goal: connect international expertise with local communities to inspire innovative designs and collaboration

Process **(2017-2018)**:

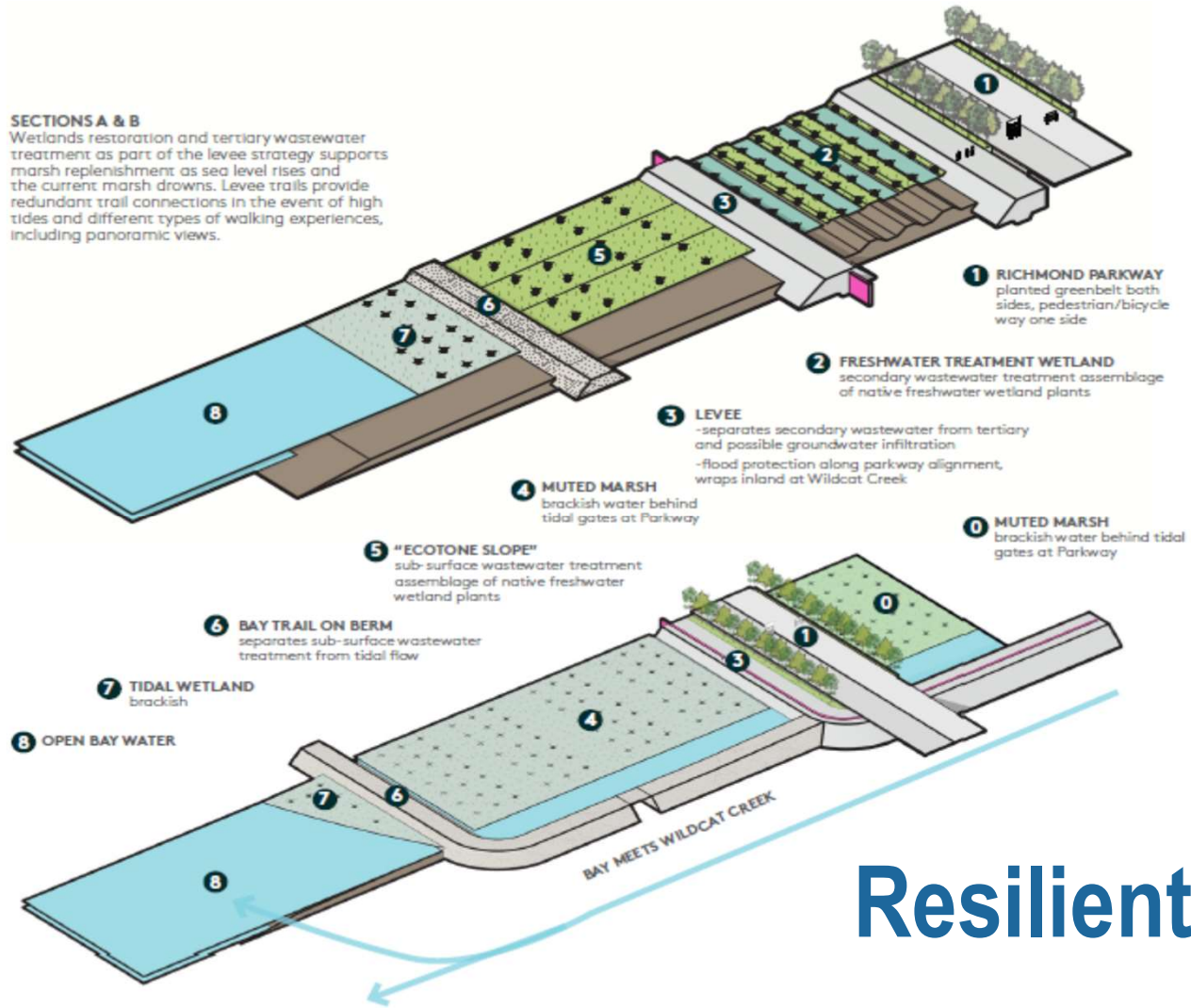
- Public call for vulnerable sites
- Design Team selection
- Collaborative Research Phase
- Assign Teams to sites
- Collaborative Design Phase
- Final Designs

The Home Team (Mithun) with Community Advisory Board



SECTIONS A & B

Wetlands restoration and tertiary wastewater treatment as part of the levee strategy supports marsh replenishment as sea level rises and the current marsh drowns. Levee trails provide redundant trail connections in the event of high tides and different types of walking experiences, including panoramic views.



Resilient by Design





North Richmond Horizontal Levee Stakeholder Group



- Meets regularly since September 2019.
- Reach shared understanding of desired benefits, alignment, and extent of potential horizontal levee system.
- Position Horizontal Levee Conceptual Design for external funding opportunities.
- Provide information, support, and guidance to WCW Project Management Team throughout conceptual design process

Thank You



San Francisco
ESTUARY
PARTNERSHIP

Have Questions?

Josh Bradt | Project Manager

o 415.778.6671 | c 510.292.7240

Josh.bradt@sfestuary.org

sfestuary.org