



# From Vision to Policy

Framework for policy  
for  
Green Sustainable Streets



# Guidelines for MASTER PLAN for a GREEN STREET NETWORK

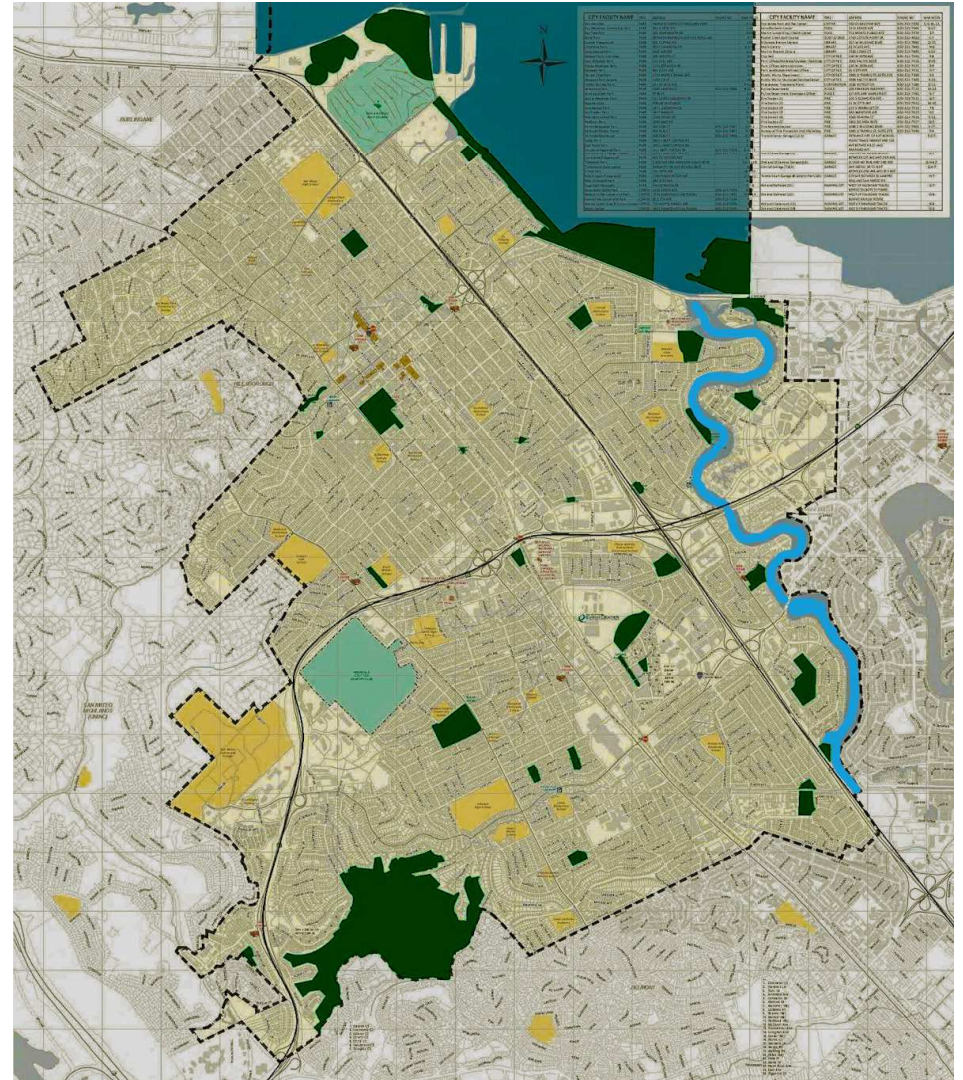
Sierra Club Loma Prieta Chapter  
Sustainable Land Use Committee



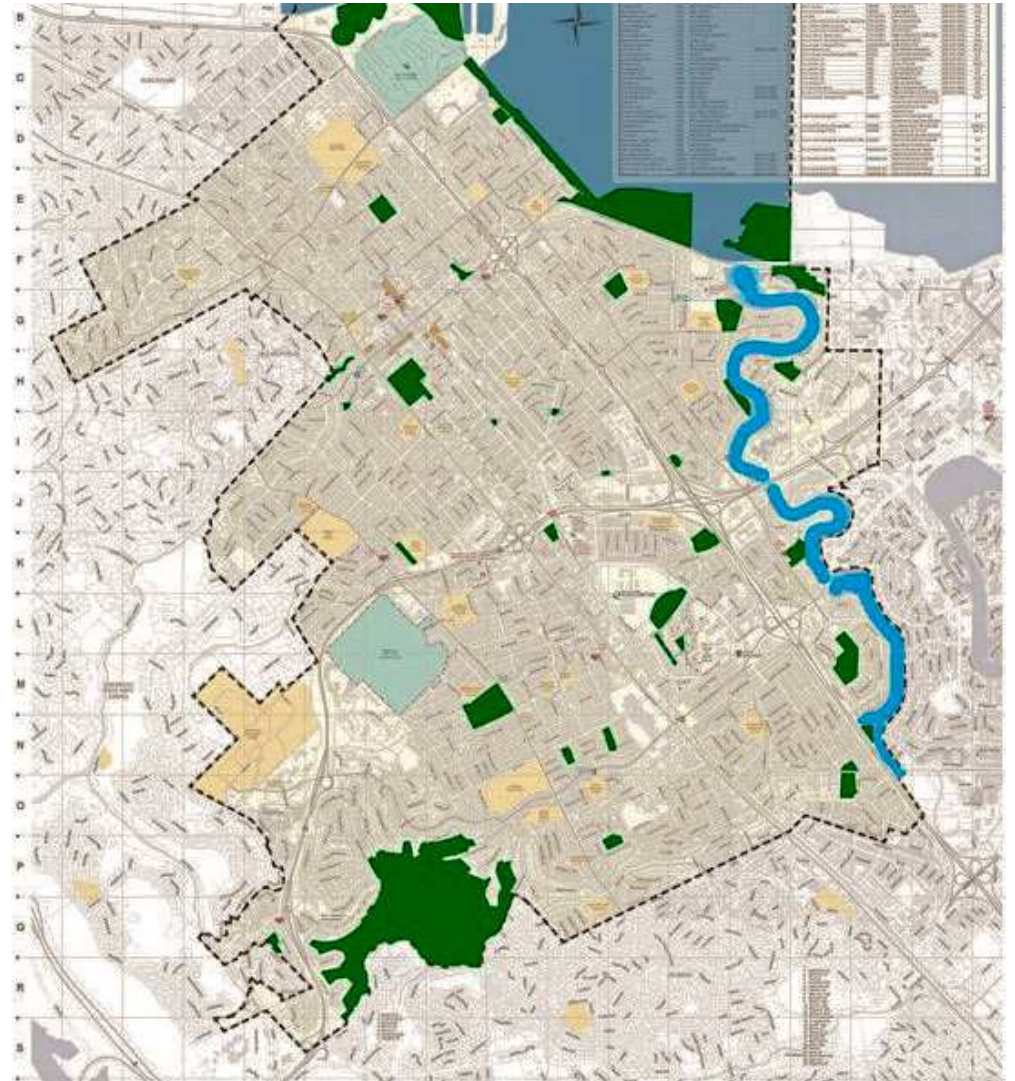
MARCH 12, 2020

# City of San Mateo

## Green Streets Network for General Plan Amendment

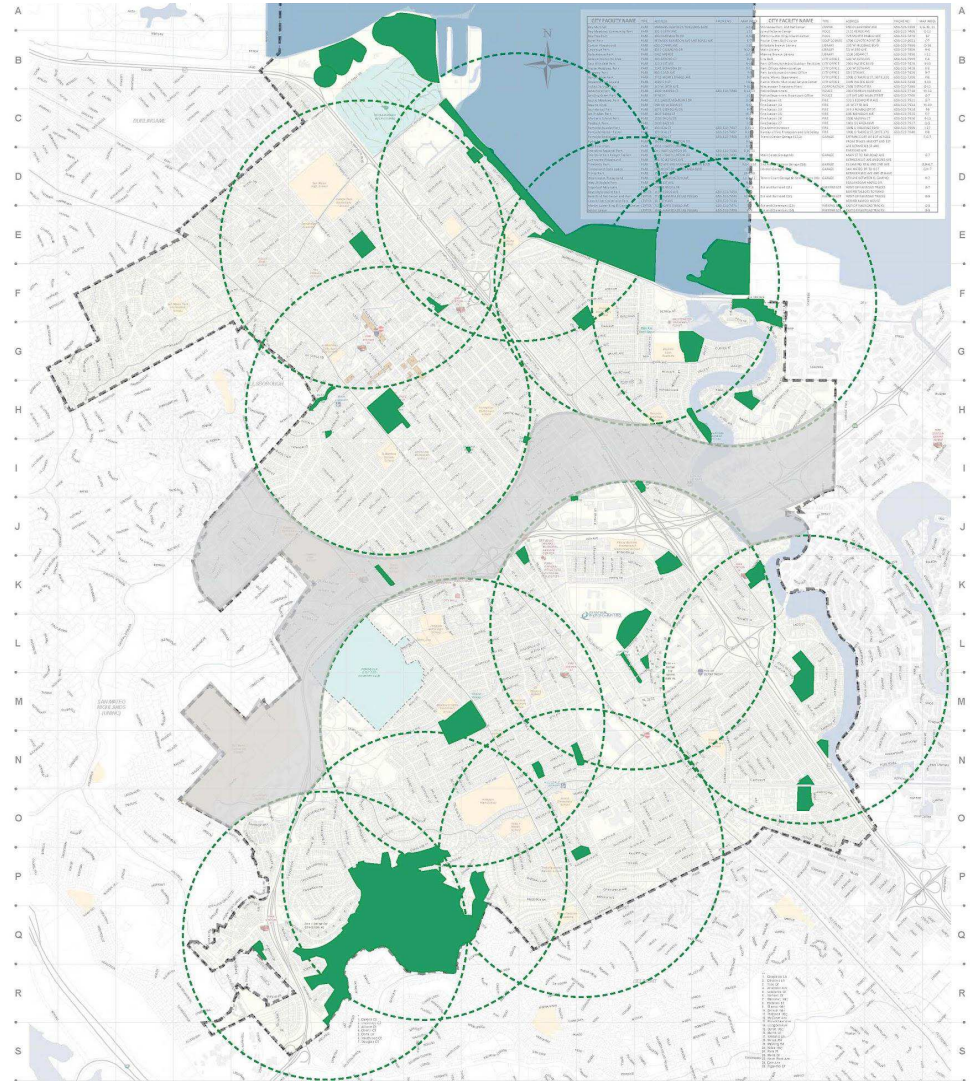


**1. Identify all parks,  
creeks and open  
spaces**

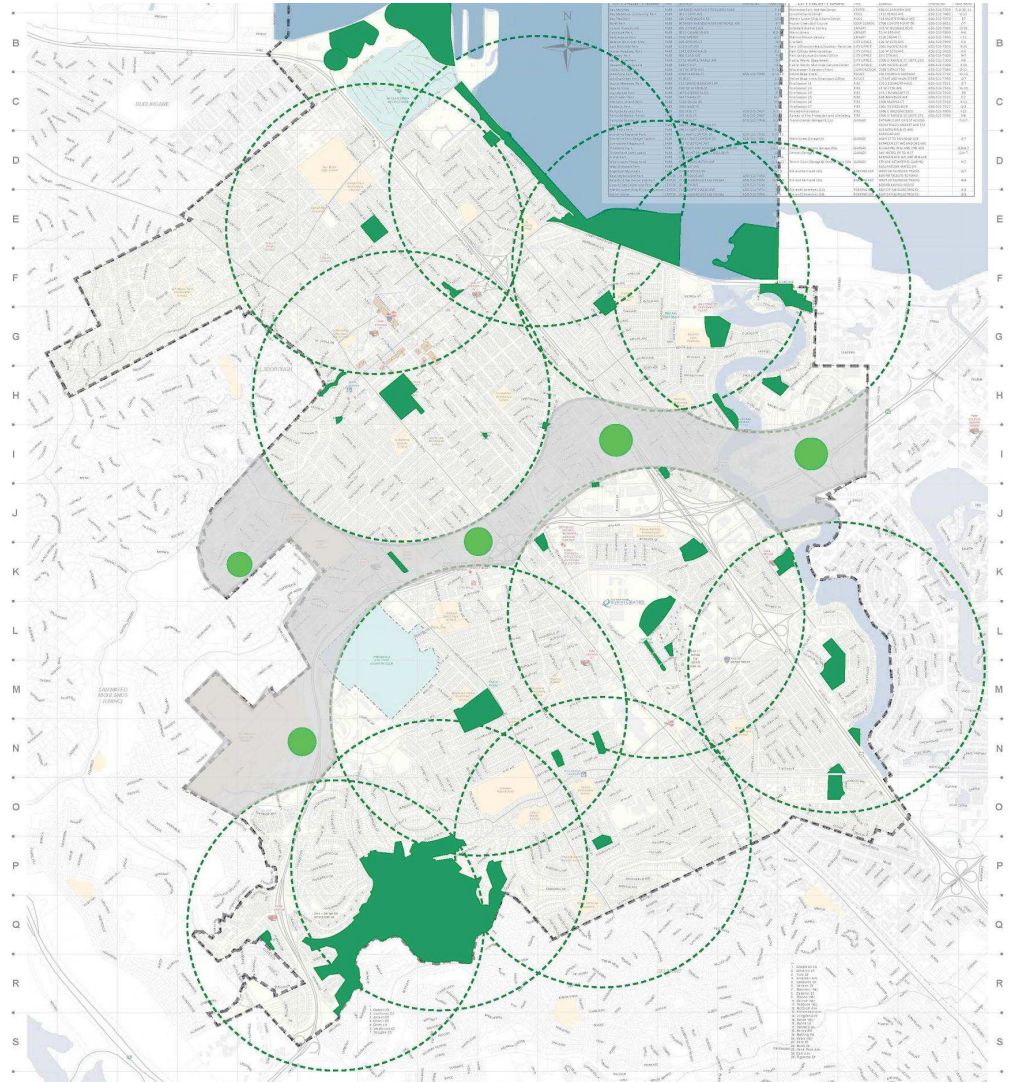


**2. Add a 10-minute walkshed around existing parks**

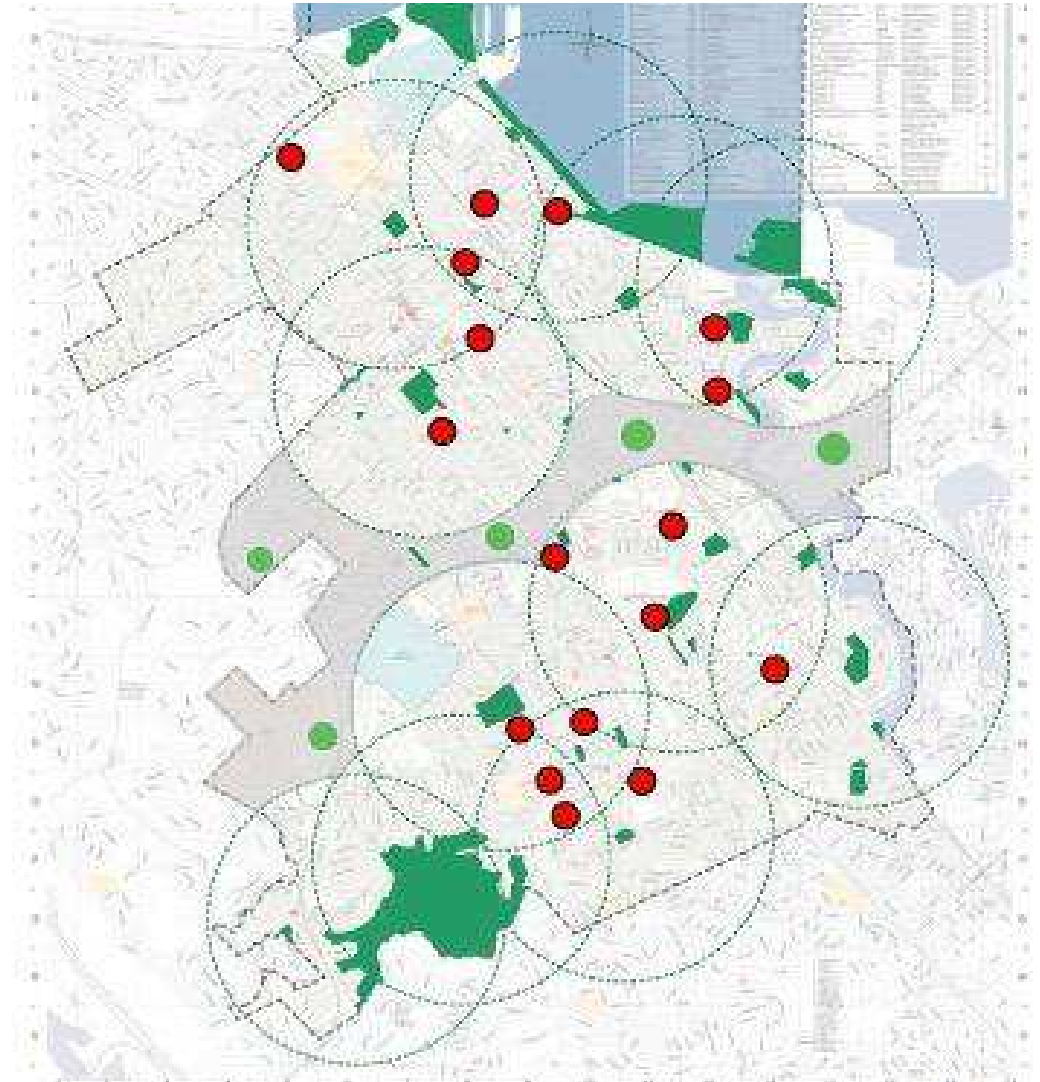
**This shows areas that lack easy access to parks**



1. Identify existing parks & creeks
2. 10 minute walk shed around existing parks
3. Plan new parks in these areas

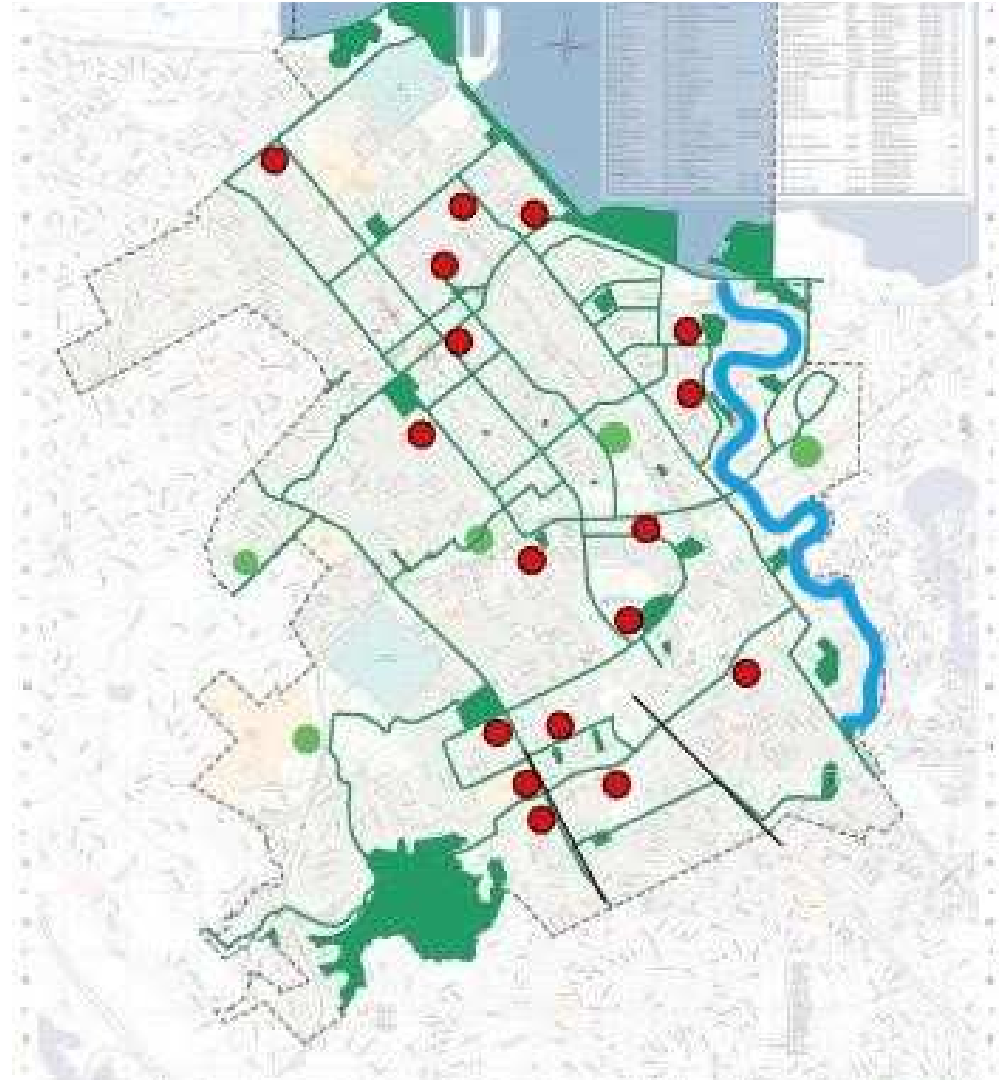


#### 4. Add existing schools



## **Connect the schools, parks, creeks, and the Bay**

If there is an existing bicycle master plan, check how closely it matches and adjust as needed





## 6. Plant trees along streets to provide shade

**Make walking and biking pleasant**

Urban forests:

- . reduce heat island effect
- . sequester carbon
- . improve air quality
- . add beauty



## **7. Include green storm-water infrastructure**

- . capture rainwater for trees and plants**
- . clean pollutants**
- . prevent flooding**
- . recharge ground water**

**prioritize pedestrian-bicycle arterials for green infrastructure**



## **8. Create Ecology /Habitat Corridors**

**Use native and high  
habitat-value  
planting**

- . Trees, Shrubs &**
- . Groundcovers**

**Enriched ecology  
attracts birds  
insects & pollinators**



**9. Really slow down auto traffic to 15-20mph maximum on green streets**

**This network is mainly for pedestrians, bicyclists, kids, seniors – not cars**



## **Active transportation is evolving**

### **Reduces VMT**

- Healthy outcomes
- Safety - top priority
- Vision Zero streets
- Safe Routes to school

### **Plan for growth**



## **10. Underground utility lines along green corridors:**

### **Aerial utility lines**

- . harm tree canopy**
- . pose a fire hazard**



**Provide incentives for property owners along the corridor to replant with native landscaping for habitat**





**Invest Once**

**An integrated design policy**

**yields dividends  
in many dimensions**





**Ideally ALL streets would be  
green and complete streets**

**However, Cities have  
to prioritize funding & timing**

**A connected master plan of green streets  
will provide benefits on  
many more levels**



**Green Streets  
create  
Sustainable & Resilient Communities**