



SIERRA CLUB
FOUNDED 1892

Missouri Sierran

One Earth



One Chance

VOLUME 43 • NUMBER 1

June - November 2012

For the latest updates, visit us on the web: <http://missouri.sierraclub.org>

Missouri Sierra Club Launches Beyond Coal Campaign

By Sara Edgar

This summer will be an exciting time for the Missouri Sierra Club as we prepare to officially launch the Beyond Coal campaign within the state. Beyond Coal is one of the club's most successful national campaigns, making significant progress in moving our country away from coal fired electricity. To date, the campaign has stopped the development of 168 new coal-fired power plants and worked to close 109 of the oldest dirtiest plants in the country, while promoting renewable energy as a safe alternative.

Although less than 40% of the nation's electricity is currently being produced by coal, here in Missouri we still depend on coal for over 85% of our electricity production. This reliance on coal results in drastic pollution to our air, land, and water and significant public health costs. In fact, the 4 coal fired power plants operated by Ameren, the largest utility in the state, are responsible for nearly 6,000 asthma attacks and

300 premature deaths annually.

Another risk associated with coal, is the disposal and management of coal ash, the waste product left from burning coal, which contains deadly toxins such as arsenic, mercury, and lead. Utilities such as KCP&L have taken on the dangerous practice of injecting it into open mines. Even more alarming, Ameren recently admitted that their plant in Labadie, Missouri has for the last 20 years been leaking 50,000 gallons of coal ash waste a day into the Missouri floodplains.

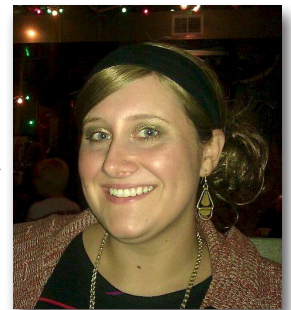
To raise awareness of these issues, Sierra Club Members (including Patricia Schuba, Leslie Lihou, and Henry Robertson) attended Ameren's annual Shareholders Meeting on April 24th to pass out bottles of potentially contaminated water from Labadie and educate shareholders. It was a great start to what will be a very exciting campaign. For more information or to get involved, please email me at sara.edgar@sierraclub.org.



Water bottles distributed to Ameren shareholders to highlight groundwater contamination

Meet our new Beyond Coal Organizer!

Sara Edgar has begun work as the Sierra Club Beyond Coal campaign organizer for Missouri. She is collecting personal stories of how asthma and air pollution has impacted people here - so email your stories to her at Sara. edgar@sierraclub.org, or call 1-800-628-5333!



She is also looking for volunteers to launch the campaign - there are many ways to plug in, from holding house parties, attending public hearings, and writing letters to the editor.

Sara is a St. Louis native who did a stint with the Peace Corps in Bolivia working on solid waste management and potable water. Since then, she earned a Masters Degree in Social Work at Washington University, focusing on Environmental Justice and Sustainable Development.



Coal ash being dumped in underground mines near Briar Cliff in Kansas City, MO
Photo: Claus Wawrzinek

Chair's Column

By James Turner, Missouri Chapter Chair



Recent years have shown emphatically that more than rational arguments in Washington D.C. are needed to obtain sound environmental policy. Thus, the

need to strengthen all of the Club's Chapters and Groups. In 2011, a Chapter-National Relationship Task Force began investigating how our chapters relate to all national entities within the Club. Recently the Task Force published its recommendations on how we could work together to better accomplish our common mission at the local, state, national, and international levels. Over the coming months and years, Missouri Chapter leaders will study the ways and means to work better with national Club leaders and activists.

Missouri Chapter is well positioned for these service opportunities. Past Treasurer Cheryl Hammond and Financial Clerk Sue King promptly installed a Quikbooks accounting system, providing better information. Frugal operations had strengthened our funds while our strategies evolved, enabling our Chapter Director hire in November 2010. So far, increasing grant support has sustained that step. John Hickey's and Michael Berg's effective work put us among the twenty chapters most intensively engaged in the Club's Beyond Coal Campaign. In February, Energy Chair Henry Robertson, John, Michael, and I attended two days of planning with Beyond Coal staff who coordinate work in the middle third of the USA. Good relationships underway already! Meanwhile, Conservation Chair Caroline Pufalt heads up our continuing work on water and habitat.

To move Missouri, we need you!

The Missouri Sierran is published four times a year by the Missouri Chapter of the Sierra Club. Annual dues of Sierra Club members pay for subscription to this publication. Non-members may subscribe for \$15 per year.

Items for publication: Contact our Chapter Office via E-mail at Missouri.Chapter@sierraclub.org or phone (314) 644-1011 or (800) 628-5333, prior to sending, for information on how to submit articles.

The editors reserve the right to edit articles! Material may be edited for length, content, or clarity. It is our job to help you communicate. If you have strong creative ownership of your writing, and wish to review your edited article before



publication, consider your deadline 10 days prior to the published deadline. With notice, we will be happy to work with you.

Reproduction quality photographs (prints) or artwork are dearly welcome. Please send us photos...

Submissions received after the deadline are subject to the possibility they won't appear in the issue: you will feel bad and we will feel bad.

All submissions must include name, E-mail or street address, and phone number of the author. Only your name will be printed in the newsletter. If you want your submission returned (including your CD), please include a Self Addressed Stamped Envelope.

Chapter Executive Committee AT LARGE

Jim Turner, 2012-2013, Chair

jlasturner@socket.net, (660) 341-1428

Henry Robertson 2012-2013, Vice Chair

hrbtsn@aol.com, (314) 647-5603

Michael Diel 2011-2012

mikediel@gmail.com, (660) 415-6265

Jim Rhodes, 2011-2012, Treasurer

jarhodes@sbcglobal.net, (314) 821-7758

John Feldmann, 2011-2012

johnfeldmann@msn.com

Deb Geno, 2012-2013

dgeno4444@yahoo.com

David Mitchell, 2011-2012

david5483@sbcglobal.net

James Harmon, 2012-2013

fa44@truman.edu

Group Representatives



Eastern Missouri Group:

Ken Schechtman, ken@wubios.wustl.edu

Jim Nyberg (alternate), nybergjim@earthlink.net

Osage Group: Open

Thomas Hart Benton Group:

Claus Wawrzinek,

claus@missouri.sierraclub.org, (816) 517-5244

White River Group:

Cynthia Andre,

bullcreek65721@gmail.com, (417) 581-8318

Committee Chair

Conservation Chair: Caroline Pufalt

Secretary: Claus Wawrzinek

Legal Chair: Henry Robertson

Membership Chair: Deb Geno

Newsletter Editor: Open

Transportation Chair: Ginger Harris

Deferred Gifts Officer: Open

Legal Co-Chair: Jim Turner

Fundraising Chair: Deb Geno

Sierra Club Council Delegate: Jim Turner

Website Chair: Vacant

Staff

Sierra Club / Missouri Chapter

7164 Manchester Avenue

Maplewood, MO 63143

(314) 644-1011, (800) 628-5333

Missouri.Chapter@sierraclub.org

Staff: John Hickey, Chapter Director

Michael Berg, Electronic Organizer

Sue King, Finance

Ozark National Scenic Riverways Update

By John Hickey

The National Park Service (NPS) is in the process of updated the General Management Plan (GMP) that will guide management at the Current and Jacks Fork Rivers for the next twenty years. The Sierra Club wants a GMP that addresses e.coli pollution from excess horse traffic, illegal roads, and ATVs on the gravel bars. And our members across the state are organizing to show the NPS that the majority supports these commonsense measures.

Sierra Club members helped collect over 5,000 signatures on a petition to

the National Park Service that lays out our proposals for reform. Club leaders participated in press conferences across the state at which we submitted the petitions to the Park Service (see photo). Member Angel Kruzen spoke in Springfield, Ken Midkiff spoke in Columbia, and Lisa Hollenbeck in St. Louis.

Our volunteers are continuing to collect signatures – Jim Rhodes, Caroline Pufalt, Sharon Hall, Toni Armstrong, and Gloria Broderick staffed a table at the Alpine Shop's Canoe and Kayak event in St. Louis in *ONSR continued on page 3*

ONSR *continued from page 2*
March.

The petitions are making a difference! Congresswoman Joann Emerson cited the influence of our petition drive in a February front page article in the Reynolds County Courier.

Sierra Club members are also volunteering time to enable low-impact recreation opportunities in the Ozark National Scenic Riverways (ONSR) area. In March and April, Bob Gestel and Becky Denney led trail maintenance crews to clear the Blair Creek section of the Ozark Trail near the Current River (see photo on page 4). Another trail

building trip will be held this fall from October 13 to 21 – please contact the office if you can volunteer for some or all of that week.

We are also using TV to get the word

out – members Greg Iffrig and John Hickey appear on “Green Time” to discuss ONSR on St. Louis’ KNLC Channel 24-1 on Sat. June 16 @ 12 noon. The episode will also run Monday June 18 at 8pm in St. Louis on Channel 24-2, Springfield on Channel 39, Joplin on Channel 36 and Marshfield on Channel 17.

The latest rumor is that the NPS will release a draft GMP in January 2013 - an entire year later than previously announced. That gives us more time to reach out to other concerned citizens who care about preserving the Current and Jacks Fork Rivers, so please contact the Sierra Club office to get involved!



Jim Rhodes collecting signatures on our ONSR petition in March at the Alpine Shop in St. Louis

Endangered Missouri River and Focus on Restoration

By Caroline Pufalt

It’s usually good to make a top ten list, but not when that list is the ten most endangered rivers in the country. The list, compiled each year by American Rivers, named the Missouri river as 4th in 2012. Outdated flood control management was highlighted as the key factor putting the river at risk.

Traditional flood control management along the river today includes heavy reliance on levees, often placed close to the river, and on in-stream river structures designed to restrict the river within a narrow channel. This approach enables unwise floodplain management under the false impression that floods are controlled. A more realistic term is flood risk reduction.

The Sierra Club helped host a press conference on May 15 regarding the Endangered Rivers list. At that event three Missourians spoke about the river, including Sierra Club members Patricia Schuba and Melissa Moulton.

Pat Schuba, of Labadie Environmental Organization, described the struggle of local citizens



Sierra Club members Pat Schuba, Caroline Pufalt & Melissa Moulton, with Brad Walker to oppose a new coal ash landfill proposed by Ameren which would cover 400 acres in the Missouri River floodplain at Labadie. Melissa Moulton described efforts of Maryland Heights Residents for Responsible Growth to stop the development of a new mall in the Howard Bend floodplain. Brad Walker, Missouri Coalition for the Environment spoke of the importance of a functioning floodplain in enabling us to live in harmony and security with the river.

Congressional funding for vital res-

toration projects along the river is at risk. One program at risk is the Missouri River Recovery Program (MRRP). Sierrans are encouraged to write their US Senators and Representatives and ask for full funding.

An example of restoration is the Jameson Island Shallow Water Habitat Restoration Project. Jameson Island is west of Columbia MO. Army Corp of Engineers is planning to create side channels for improved fish habitat. Comments of support can be sent to David.r.hoover@usace.army.mil by June 30, 2012. The project involves clearing sediment for creation of chutes for water flow. Several years ago the Missouri Clean Water Commission opposed the project due to displacement of sediment into the river. Attention to water quality is essential, but the Missouri got the moniker of “Big Muddy” because carrying sediment is part of its natural function.

MISSOURI CHAPTER SIERRA CLUB OUTINGS

Eastern Missouri Group

<http://missouri.sierraclub.org/emg>

Eastern Missouri Group outings are open to the public and a donation of one dollar is requested. Leaders are unpaid volunteers who need your cooperation to make the trip safe and rewarding. Please call the leader well in advance for details, approval, or if you plan to cancel. Outings start officially at the trailhead or river access. No guns, pets, or electronic media are permitted on trips.

For general information about outings contact Bob Gestel, (636) 296-8975, or rgestel@sbcglobal.net. For additional outings submitted after our publication deadline and for changes, please check the Eastern Missouri Group website at

<http://missouri.sierraclub.org/emg>.

June 17 (Sun) Father's Day float.

One day canoe/kayak trip in the Meramec basin. Choice of stream depends on water level. Toni Armstrong & Richard Spener, (314) 434-2072.

June 20 (Wed) Day hike.

We'll hike 5-6 miles at Hilda Young Conservation. Contact Tina Mathes, treasurehunt22@sbcglobal.net



Front Row: Becky Denney

Middle Row: Dan Mosby, Gene Walker, Jamie Jepsen, Doug Grove

Back row: Ernie Mueller

To participate in one of the Sierra Club's outings, you will need to sign a liability waiver. If you would like to read a copy of the waiver before the outing, please see:

<http://sierraclub.org/outings/chapter/forms> or call (415) 977-5528.

In the interest of facilitating the logistics of some outings, it is customary that participants make carpooling arrangements. The Sierra Club does not have insurance for carpooling arrangements and assumes no liability for them. Carpooling ride sharing or anything similar is strictly a private arrangement among the participants. Participants assume the risks associated with this travel. CST 2087766-40

June 20 (Wed) Day Hike at Onondaga Cave State Park near Leasburg, MO.

Two loop trails, forested and with open glades will offer scenic overlooks and an abundance of wildflowers. 5-6 miles, difficulty moderate. Contact Margot Kindley, margot107@charter.net

June 27(Wed) Louis H. Bangert Memorial Wildlife Area - North, West and East Loop Trails.

This series of three looping trails totaling just over 4 miles makes this an easy hike on a sometimes island on the Missouri River. Just South of Hwy. 70 and East of downtown St. Charles offers a good bird watching and varied tree species on this 160 acre track of bottom land. Doug Melville (636) 288-1055 or douglas.k.melville@gmail.com for further information.

June 29 (Fri) Could be hike or bike.

Call for more info. thisissuzanne@yahoo.com or (618) 281-4762.

July 4 (Wed) Day hike at Al Foster Trail.

Let's celebrate Independence Day with a shady 5-6 mile hike along the Meramec River. Contact Tina Mathes, treasurehunt22@sbcglobal.net

July 11 (Wed) Little Grand Canyon, Illinois.

For this shaded hike we will be climbing down into a 300' limestone canyon, traveling through the moist bottom land and then hiking out of the canyon to a spectacular panoramic view the Mississippi River valley. A fun hike for something that you do not normally see in our hikes. Doug Melville, (636) 288-1055, or

douglas.k.melville@gmail.com.

July 18 (Wed) Day hike.

We'll hike a moderate 4.5 mile trail at Matson Hill near Defiance in St. Charles County. Contact Margot Kindley at margot107@charter.net

July 21-22 (Sat-Sun) Experience true wilderness on the Eleven Point National Wild and Scenic River.

We will canoe about 14 miles and camp overnight along the river. Contact Jim Rhodes (314) 821-7758) for more information.

July 25 (Wed) Johnson's Shut-ins State Park.

This will be a three trail hike to take in most of this Missouri countryside. We will begin on the Black River Trail System and journey to the main parking lot where will pick up the Horseshoe Glade trail. This trail passes through a dense forest and then opens up to a rocky glade with views of the ancient St. Francis mountains. Finally we will take the Shut-ins trail for a hike to the shut-ins and the surrounding countryside. We will then end up by continuing the Black River Trail System to the end. Contact Doug Melville, (636) 288-1055, or douglas.k.melville@gmail.com.

July 28 (Sat) Afternoon/evening canoe trip.

Enjoy the river during a quieter time of day, as we paddle late in the afternoon. We will have dinner on a gravel bar and listen to frogs while we finish our trip before dark. Toni Armstrong and Richard Spener, (314) 434-2072.

Aug 1 (Wed) Day hike. We will hike 5-6 miles at Castlewood State Park.

Contact Tina Mathes, treasurehunt22@sbcglobal.net

Aug 8 (Wed) McCully Heritage Project, Illinois.

This is a five mile hike on land just East of the Illinois River. This land, which was donated to the State of Illinois, contains forests, glades, spring and wetlands. Trekking through this mostly forested land should keep you shaded and a little cooler for an August hike. Contact Doug Melville, (636) 288-1055, or douglas.k.melville@gmail.com.

Aug 15 (Wed) Day hike at Broemmelsiek Park in St. Charles County. Moderate 4 mile ramble through a variety of landscapes, partially shaded. Contact Margot Kindley at margot107@charter.net

Aug 22 (Wed) St. Joe State Park, Pine Ridge Loop.

With an easy roadbed to follow for the first half of this trail, the second half will become a bit more rugged with a creek ford. The views open up as you travel this loop through the countryside. Contact Doug Melville, (636) 288-1055, or douglas.k.melville@gmail.com.

Aug 25, Sat: Operation Clean Stream. Help clean a section of the Meramec River from Pacific Palisades to Allenton. Enjoy the fun as we search for treasures along the river, join the contest for most tires found or most unusual object. We will have a limited number of outfitter canoes to use for the day, so if you don't have a canoe, you can still help. There is a picnic following the clean up. George Behrens, (314) 821-0247.

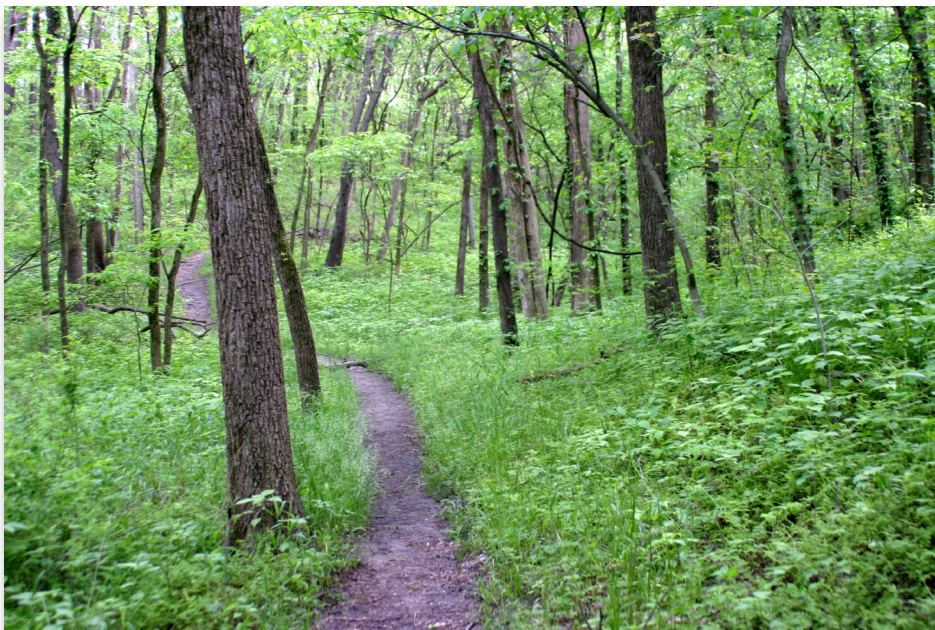
Aug 29, Wed: Day Hike. TBA. Hike dependent on weather conditions. Contact Margot Kindley at margot107@charter.net

Sep 1-3, Sat-Mon: Canoe/kayak trip on the Mississippi.

This trip is dependent on the status of the leaders' National Sierra Club trip. George Behrens, (314) 821-0247.

Osage Group

<http://missouri.sierraclub.org/osage>



Hiking trail at Weston Bend State Park

Photo: Claus Wawrzinek

White River Group

<http://missouri.sierraclub.org/wrg>

Thomas Hart Benton Group

<http://missouri.sierraclub.org/thb/outings>

At time of this printing, most THB Group outings were still tentative. Please check website for latest information.

You can find last minute information on THB Group outings at our website or on Meetup at <http://www.meetup.com/KC-Sierra-Club-Outings/>

Sept 15th (Sat), Day trip to a Missouri State Park.

Sept 15th (Sat), Backpacking 101 Class, Part 1.

Sept 21st-23rd (Fri-Sun), Backpack Hercules Glades Wilderness.

Oct 6th (Sat), Backpacking 101 Class, Part 2.

Oct 20th (Sat), Day trip to a Missouri State Park.

Oct 19th-21st (Fri-Sun), Backpack Richland Creek Wilderness.

Oct 26th-28th (Fri-Sun), Car camping in the Flint Hills.

Nov 2nd-4th (Fri-Sun), Backpacking 101 Class, backpacking trip.

Nov 10th (Sat), Perry Lake trail maintenance.

Nov 17th (Sat), Day trip to a Missouri State Park.

Nov 23rd (Fri), Hike George Latham Trail.



It's time for America to get smart about energy and be less dependent on dwindling oil reserves. We need to increase our use of clean, renewable energy sources like wind and solar power. Let your voice be heard.

Add your voice to protect the planet.
Join Sierra Club

Name _____
Address _____
City _____ State _____
Zip _____ Phone (____) _____
Email _____

Join today and receive a FREE Sierra Club Weekender Bag!



Check enclosed. Please make payable to Sierra Club.
Please charge my: Visa Mastercard AMEX
Cardholder Name _____
Card Number _____
Exp. Date ____/____/____
Signature _____

Membership Categories	Individual	Joint
Special Offer	<input type="checkbox"/> \$25	
Standard	<input type="checkbox"/> \$39	<input type="checkbox"/> \$49
Supporting	<input type="checkbox"/> \$75	<input type="checkbox"/> \$100
Contributing	<input type="checkbox"/> \$150	<input type="checkbox"/> \$175
Life	<input type="checkbox"/> \$1000	<input type="checkbox"/> \$1250
Senior	<input type="checkbox"/> \$25	<input type="checkbox"/> \$35
Student/Limited Income	<input type="checkbox"/> \$25	<input type="checkbox"/> \$35

Contributions, gifts and dues to Sierra Club are not tax deductible; they support our effective, citizen-based advocacy and lobbying efforts. Your dues include \$7.50 for a subscription to *Sierra* magazine and \$1 for your Chapter newsletters.

Enclose a check and mail to Sierra Club, P.O. Box 421041, Palm Coast, FL 32142-1041

or visit our website www.sierraclub.org

F94Q W 3200 1

Good Jobs, Green Jobs

By Holly Mills

Missouri Sierra Club sent a delegation representing different regions of the state to the May 9-10th Blue Green Alliance Good Jobs Green Jobs conference in Detroit. Participants included Mike Diel from Macon, Ray Anderson from Auxvasse, Patricia Schuba from Labadie, Tom Kutscher from KC, John Hickey from St. Louis, and myself, from Springfield.

The conference brought together many different stakeholders from all over the Midwest including union

workers, Sierra Club members, attorneys, citizens and students getting

ready to enter the workforce. This gave us the unique opportunity to get one on one time with people who have successfully created a system where good jobs ARE green jobs.

During plenary sessions we heard from United Autoworkers President Bob King, Senator Stabenow, Congressman Dingell and many more. United Steelworkers International President Leo Gerard said, "When I think about the way I grew up, I came to realize that the same people telling us



Missouri Sierra Club delegation at the Good Jobs, Green Jobs Conference in Detroit: Patricia Schuba, Ray Anderson, Tom Kutscher, Holly Mills, John Hickey, Mike Diel

Green Jobs continued on page 7

Legislative Report

By Mike Diel

It's been a busy year in Jefferson City. We started the year off fighting HB 1487, the house version of combining the rolling back of Prop C's renewable energy, and CWIP (paying for a nuclear power plant before it's built). And we're finishing off the year fighting SB 759 the Senate version of the same thing. In between we fought off CAFO's "Right to Raise Animals", assaults on the Missouri Department of Conservation, and a whole slew of nonbinding resolutions. There's a resolution calling for the building of the Keystone pipeline heading for the governor's desk HCR 37, and one telling the EPA not to regulate mercury (HCR49).

House Concurrent Resolution 52 is one of the dumber. It addresses the

National Parks Service in relation to their General Management Plan which is due out very soon. This resolution recommends that a "No Action Plan"

HCR 35 introduced and assigned to a committee. This historic resolution calls for the DNR to monitor the ground water around coal ash sites.

We also through the hard work of many got an Energy Efficiency Resource Standard bill (HB 1850) a committee hearing. These small triumphs raise the legislators awareness and makes future sessions more receptive to these issues.

This year's Lobby Day was on Leap Day Feb. 29th 2012. And thanks to the work of many people through Missouri Conservation and Environmental



Sierra Club members in Jeff City for Lobby Day Photo: Claus Wawrzinek

is what is best for the Ozark National Scenic Waterways. This attack on one of Missouri's prized possessions was voted out of the House along party lines. Can you guess which party voted which way?

On the other hand, thanks to the hard work of many people we got

Alliance we set an all time record with 160 face to face meetings with legislators or their staff. Thanks to all involved.

On the other hand, we need to increase our efforts to hold in-district meetings with our state senators. John

Legislative continued on page 7

Victory on energy efficiency in KC!

By John Hickey

Energy Efficiency is the cheapest and cleanest source of energy for Missouri, and currently our state is doing a poor job on it. The American Council for an Energy Efficient Economy recently rated Missouri as 44th out of 50 states on energy efficiency.

One policy that would make a big difference is upgrading residential energy efficiency building codes. Many cities and counties have outdated energy codes – which mean higher utility bills, more pollution, and uncomfortable homes. The 2009 IECC (International Energy Conservation Code) provides a 15%

savings over the 2006 code, and the 2012 IECC provides a savings of 30% or more over the 2006 code.

Sierra Club members across the state are persuading building codes officials to support updated energy codes. Here are a few highlights:

Kansas City: Claus Wawrzinek and David Mitchell served on the stakeholders group that developed agreement on a modified version of 2012 IECC. The KC City Council adopted this code on May 24th, making it the first jurisdiction in the state to adopt the 2012 IECC!

Webster Groves: Charlie Nester, Margo Gordon, Beth Mattingly, Bob Klepper and Gary Steps met with

codes director Mike Harney, who indicates that Webster will adopt the 2009 IECC by September.

University City: Judy Zwicker, Neville Rapp and Bob Elgin met with codes director Jared Agree, who anticipates that U City will adopt the 2009 IECC this summer.

Creve Coeur: Kathleen Engel and Karen and Kirk Helfrich met with codes director Steve Unser, who expects that city to consider the 2009 IECC beginning this summer.

If you would like to support improved energy codes in your city or county, please email john.hickey@sierraclub.org, and I will help you get started!

Green Jobs *continued from page 6*

you couldn't have jobs with good wages were the ones who said we couldn't have good jobs and a clean environment," said Gerard. "We can and must have both or neither."

Several of the workshops addressed the strategy and success of wind technology across the Midwest. There are several organizations including, P.E.A.R. (Pollin Energy and Retrofits), that provide funding, education and guarantees for multifaceted clean energy projects. Other workshops included women in the green workforce and social justice in the digital technology as applied to the green movement. These are only a few of the initiatives seen throughout the Midwest. I am excited to be a part of the movement in Missouri.

Legislative *continued from page 6*

T. Lamping met with 18 Sierra Club members in St. Louis on May 4th. But the Thomas Hart Benton Group hasn't been able to meet with Jolie Justus nor Osage with Kurt Schaefer or White River with Bob Dixon. Now that the Legislature has adjourned, it will be easier to schedule these important meetings.

A Japanese perspective on NUCLEAR POWER

By Rosin Yoshida



The most urgently needed problem to solve is stopping "nuclear winter" – which could be caused by nuclear bombs, power accidents, man-made wars, mis- haps, terrorism, or natural disasters like the nuclear meltdowns at Fukushima, Japan. Its No. 4 reactor fuel pool was about to melt and irradiate and make Tokyo uninhabitable; luckily, an accidental work schedule delay caused a water leak to the spent fuel pool, preventing its drying up. The plant is still vulnerable to more and stronger earthquakes – which may cause uncontrollable damage which spreads meltdowns to other reactors, and which could cause even more devastating impacts.

There are no safe nuclear power plants or bombs anywhere. The "Atoms for Peace" propaganda was to hide continued bomb material production of uranium and plutonium in the States. Other governments want to keep or restart nuclear reactors for the

same reason.

The nuclear plants spew radiation into the air, water, and earth, irradiating workers, nearby residents, living beings, and life systems- even with normal operation. The nuclear industry still has not yet found any safe storage method for spent fuel, which is radioactive for thousands or millions of years.

Natural disasters, human mishaps from design, operation, decommissioning and terrorism, could all destroy people's life, ecology, and food. It is threatening, unethical, and the capital crime against all living beings and life system; it is uncontrollable by men. That is why, after Fukushima, 80% of the Japanese people are against nuclear power and want to shut down all 54 reactors. None want money for death.

Author Rev. Rosan Osamu Yoshida, Ph.D. is a Sierra Club member and Abbot of the Missouri Zen Center.



Missouri Chapter
7164 Manchester Ave.
Maplewood, MO 63143

**NEWSPAPER
DATED MATERIAL**

Non-Profit Org.
U.S. Postage

PAID
St. Louis, MO
Permit No. 3274



MO Chapter Director John Hickey delivering 5,000 petitions for stronger management at the Ozark Scenic Riverways, at the National Park Service office in St. Louis

INSIDE

- Missouri Sierra Club Launches Beyond Coal .. Campaign 1
- Meet our new Beyond Coal Organizer! 1
- Chair’s Column 2
- Ozark National Scenic Riverways Update 2
- Endangered Missouri River and Focus on Restoration 3
- Sierra Club outings 4, 5
- Good Jobs, Green Jobs 6
- Legislative Report 6
- Victory on energy efficiency in KC! 7
- A Japanese perspective on NUCLEAR POWER 7