



## Progress on Energy Efficiency in KC and Joplin

By John Hickey, Chapter Director

The Environmental Protection Agency recently announced that greenhouse gas (GHG) emissions from US power plants dropped by 10% between 2010 and 2012. During that same time frame, Missouri's GHG emissions went down as well, but only by 6%.

According to analysts, about 75% of that national reduction in GHG emissions is due to increased energy efficiency. Missouri Sierra Club members are demanding that our utilities invest in ambitious energy efficiency programs to match the national progress.

In our last newsletter, you read

about how Sierrans, led by **Jim Evans, Harry Alper, William Frye, Catherine Hart, Gaye and William Pate and Hugh and Ramona Shield**, put a resolution to support energy efficiency in front of Empire shareholders at their April annual meeting in Joplin. The strong vote of support for this resolution gave a signal to Empire executives that it was time to get serious about energy efficiency. In October, Empire filed a plan with the Public Service Commission (PSC) to do just what we were asking for – a plan to aggressively pursue energy efficiency in southwest Missouri!

Similarly, in Kansas City, the orga-

nizing work of Sierra Club members is paying off. In May, activists including **Anne McGregor, David Mitchell and Carol Habig** delivered over one thousand petition signatures to the PSC office in downtown Kansas City, asking the PSC to convince Kansas City Power and Light (KCPL) to initiate a substantial energy efficiency plan. Then, just a few weeks ago, KCPL filed paperwork with the PSC announcing that it will submit an expanded energy efficiency proposal in December!

A final bit of good news here – Ameren's \$150 million energy efficiency program is in full swing. Visit [www.actonenergy.com](http://www.actonenergy.com) if you are an Ameren customer interested in rebates for energy efficiency projects at your home or business.

## Two Big Building Codes Victories

By Michael Berg, Chapter Organizer

This fall Columbia and University City became the second and third municipalities in Missouri (after Richmond Heights) to adopt up to date residential energy efficiency codes.

The 5-2 vote on Sept. 16 by the Columbia City Council requires new homes to be built to the standard of the 2012 International Residential Code on Energy Efficiency. According to the Midwest Energy Efficiency Alliance, this should save Columbia residents \$233,000 per a year in decreased energy costs. This is energy never used, coal never burned, and pollutants that never enter our air and water.

The Sierra Club was heavily involved in bringing this code change to reality. Club members talked and wrote to council members in support of the change. Over a dozen Sierra Club members came to the city council meeting, several speaking passionately about the issue to the council, including

**Jan Dye, Carolyn Amparan, Terry Ganey and Linda Green**. The Sierra Club Osage Group endorsed and worked hard to elect **Karl Skala and Ian Thomas** to the city council last April. Both **Skala and Thomas** voted for the up to date energy codes.

In University City, on October 28, the Council voted unanimously to adopt the new code, after a year and a half Sierra Club effort. Over 35 Sierra Club members came to the Oct. 14 and Oct. 28 council meetings to show their support. **Caroline Pufalt, Michael Berg, Rory Ellinger, Brian Ettling, Meg Puterbaugh, Neville Rapp, Maddy Salzman and Caroline Burney** all spoke in favor of the bill.



Sierra Club members were joined by members of the Ethical Society Earth Ethics Committee as well as members of Missouri Interfaith Power & Light at the St. Louis County Council meeting on October 15th. This was the 4th visit to the County Council where Sierra Club members have delivered over 2,000 petitions and letters calling for action to address coal pollution. During this visit attendees spoke out about the injustices posed by coal pollution and our moral obligation to act.

Photo: Sara Edgar

## Draft Plan released for the Ozark National Scenic Riverways

Preserving the Current and Jacks Fork Rivers has long been a top priority for the Missouri Sierra Club. For the last several years, Club activists have been working with the National Park Service (NPS) to update the General Management Plan (GMP) that will govern the Ozark National Scenic Riverways (ONSR) for the next twenty years. That GMP was finally released on November 8th, and can be viewed at <http://parkplanning.nps.gov/OZAR>.

Please review the draft plan, and send in your comments to the NPS (click on the "Open for Comment" link on the GMP webpage) about what elements you support, and where you see a need for changes. Please send a copy of your comments to the Sierra Club office – [missouri.chapter@sierraclub.org](mailto:missouri.chapter@sierraclub.org). The comment deadline is Jan. 8, 2014, so don't delay!

You can also comment at one of three public meetings being held by the NPS. In addition to a two hour open house, two of these meetings include a hearing on wilderness status for the Big Spring area on the Current River.

### **Tuesday, December 10th**

6 – 8 p.m. Draft GMP Open House  
8 – 9 p.m. Wilderness Hearing  
Van Buren Youth & Community Center, intersection of Business 60 & Highway D  
Van Buren, MO 63965

### **Wednesday, December 11th**

6 – 8 p.m. Draft GMP Open House  
8 – 9 p.m. Wilderness Hearing  
Powder Valley Conservation Nature Center  
11715 Cragwold Road  
Kirkwood, MO 63122

### **Wednesday, December 11th**

10 a.m. – 12 p.m. Open House  
Salem City Hall Auditorium  
202 North Washington  
Salem, MO 65560

Other activities Sierra Club activities supporting ONSR include:

- **Trail Maintenance** – Forty-six volunteers conducted trail maintenance on hiking trails along the Current

The Missouri Sierran is published two times a year by the Missouri Chapter of the Sierra Club. Annual dues of Sierra Club members pay for subscription to this publication. Non-members may subscribe for \$15 per year.

**Items for publication:** Contact our Chapter Office via E-mail at [Missouri.Chapter@sierraclub.org](mailto:Missouri.Chapter@sierraclub.org) or phone (314) 644-1011 or (800) 628-5333, prior to sending, for information on how to submit articles.

The editors reserve the right to edit articles! Material may be edited for length, content, or clarity. It is our job to help you communicate. If you have strong creative ownership of your writing, and wish to review your edited article before



publication, consider your deadline 10 days prior to the published deadline. With notice, we will be happy to work with you.

Reproduction quality photographs (prints) or artwork are dearly welcome. Please send us photos...

Submissions received after the deadline are subject to the possibility they won't appear in the issue: you will feel bad and we will feel bad.

All submissions must include name, E-mail or street address, and phone number of the author. Only your name will be printed in the newsletter. If you want your submission returned (including your CD), please include a Self Addressed Stamped Envelope.

## Chapter Executive Committee AT LARGE

### **Jim Turner, 2012-2013, Chair**

[jlturner@socket.net](mailto:jlturner@socket.net), (660) 341-1428

### **Henry Robertson 2012-2013, Vice Chair**

[hrrbtsn@aol.com](mailto:hrrbtsn@aol.com), (314) 647-5603

### **Michael Diel 2013-2014**

[mikediel@gmail.com](mailto:mikediel@gmail.com), (660) 415-6265

### **Jim Rhodes, 2013-2014, Treasurer**

[jarhodes@sbcglobal.net](mailto:jarhodes@sbcglobal.net), (314) 821-7758

### **John Feldmann, 2013-2014**

[johnfeldmann@msn.com](mailto:johnfeldmann@msn.com)

### **Deb Geno, 2012-2013**

[dgeno4444@yahoo.com](mailto:dgeno4444@yahoo.com)

### **David Mitchell, 2013-2014**

[atrial1047@att.net](mailto:atrial1047@att.net)

### **James Harmon, 2012-2013**

[fa44@truman.edu](mailto:fa44@truman.edu)

## Group Representatives



### **Eastern Missouri Group:**

Rob Polzin, [Polzin.Rob@gmail.com](mailto:Polzin.Rob@gmail.com)

Ken Schechtman (alt), [ken@wubios.wustl.edu](mailto:ken@wubios.wustl.edu)

**Osage Group:** Mike Diel, [mikediel@gmail.com](mailto:mikediel@gmail.com)

**Thomas Hart Benton Group:**

Claus Wawrzinek,

[claus@missouri.sierraclub.org](mailto:claus@missouri.sierraclub.org), (816) 517-5244

**White River Group:**

Open seat

## Committee Chair

**Conservation Chair:** Caroline Pufalt

**Secretary:** Claus Wawrzinek

**Legal Chair:** Henry Robertson

**Legal Co-Chair:** Jim Turner

**Membership Chair:** David Mitchell

**Newsletter Editor:** Open

**Transportation Chair:** Ginger Harris

**Political Chair:** John Feldmann

**Legislative Chair:** Mike Diel

**Fundraising Chair:** Deb Geno

**Sierra Club Council Delegate:** Jim Turner

**Website Chair:** Vacant

## Staff

### **Sierra Club / Missouri Chapter**

7164 Manchester Avenue  
Maplewood, MO 63143  
(314) 644-1011, (800) 628-5333  
[Missouri.Chapter@sierraclub.org](mailto:Missouri.Chapter@sierraclub.org)

**Staff:** John Hickey, Chapter Director  
Michael Berg, Electronic Organizer  
Brian Ettling, Energy Efficiency Organizer  
Brian DeSmet, Finance

- River this past October, including **Bob Gestel, Suzanne Smith, Becky Denney, Mike Bollinger, George Behrens, and Paul Stupperich.**
- **Opposing the Government Shutdown** – During the recent federal shutdown, the Scenic Riverways were closed. The Sierra Club spoke out for a re-opening of the federal government and our park system.
- **Wilderness Education – Toni Armstrong and Richard Spener** have assembled their photos from wilderness areas across Missouri, to highlight the importance of these critical areas. The exhibition will

travel from St. Louis to Kansas City, Columbia, Springfield, Kirksville, and other locations.

- **Educating our elected officials** – **June Stevens** led a meeting of local Club activists with Sen. McCaskill's district director in Cape Girardeau in August to support an effective GMP.
- **Outings** – KC member **Bill Nichols** is leading a national Sierra Club outing on the Current River from December 29 to January 1st – this is a great opportunity to see this area with your own eyes – go to <http://content.sierraclub.org/outings/> and look for outings #14400A!

## Our Energy Efficient Home

By Buddy Waxman, Sierra Club member

Our interest in energy efficiency has inspired us to make several improvements to our home. In 1980, we added a solar greenhouse on the back of our 1950s era Olivette house and insulated its outside walls. Up until 2009, when we added onto our home, the greenhouse had provided between 30% and 50% of our winter heating depending on the number of sunny days. The greenhouse uses double pane acrylic panels set at an angle of approximately 15 degrees from vertical so that the winter sun is perpendicular to them. In the summer, we cover the glazing with a sun screen cloth to reduce that buildup of heat.

In 2009 we added a master bedroom and a family room to our home. In order to avoid the need for additional heating and cooling, we put Sunmate solar heating panels on the south side of our addition and used double wall construction for the exterior walls. We also added insulated shades to all windows

in the addition. We are very pleased that we are able to heat our home using even less gas during the winter.

In 2010 we had photo voltaic panels put on the roof. These panels, aided by our efforts to be energy efficient, meet all of our electric needs and more even in the summer when our air conditioner is running. In fact, our



Photo: Buddy Waxman

panels generate about 1500 kWh more per year than we use.

Our latest project includes two large rain barrels that hold about 110 gallons each. We use this water for the plants in a solar greenhouse and for our outside gardens. If you would like more details, please write us at [bwaxman2005@gmail.com](mailto:bwaxman2005@gmail.com).

## Sierra Club Opposes Proposed Coal Ash Landfill in Springfield

By John Hickey, Chapter Director

City Utilities (CU) is trying to build a coal ash landfill next to its John Twitty plant, on the west-side of Springfield. Department of Natural Resources (DNR) geologists had ruled out that site for a landfill, because the underlying karst topography is very porous, and heavy metals such as mercury and arsenic would leach from the landfill into the groundwater. Dye trace tests have shown that sinkholes on the proposed site drain into Wilson Creek and Rader Spring.

However, CU pulled some strings in the state legislature, and local state representative Lincoln Hough snuck an amendment onto a bill that allowed CU to sidestep scrutiny from the DNR.

Sierra Club members brought this sordid legislative maneuvering to light. **Myra Scroggs, Jim Evans, Sue Skidmore, William Frye, and Tina Ballhorn** went to Jefferson City and met with a reporter from the Springfield News Leader, which then ran an expose of what happened.

Sierra Club members turned out in force for a public awareness session held by the DNR on the Missouri State University campus on November 7th. Members involved included **Dr. Judy Dasovich, Lauren Bansbach, Cathy Primm, Jennifer Conner, Dan Chiles, Jim Arneson, Donna Bergen, Kent Brown, Larry Lambeth, Sarah Robertson, Myra Scroggs, Sue Skidmore, Mindy Spitz and Louise Wienckowski.**

In the middle of this controversy, CU showed once again that it is sloppy with its coal ash management. CU's Twitty plant spewed clouds of coal ash over residential areas of Springfield in October, coating cars and houses with the ash. Let's not let CU fool us again – let's organize to stop this wrong-headed plan, and preserve our water resources!



Lenexa, KS, November 4: Missouri Rep. Brandon Ellington speaks to Sierra Club members and supporters about the need for stricter controls on carbon emissions from coal burning power plants. Hundreds came from Missouri, Kansas, Nebraska and Iowa to testify before the Environmental Protection Agency about the need for stricter carbon emissions controls.

Photo: Claus Wawrzinek

# MISSOURI CHAPTER SIERRA CLUB OUTINGS

## Eastern Missouri Group

<http://missouri.sierraclub.org/emg>

Eastern Missouri Group outings are open to the public and a donation of one dollar is requested. Leaders are unpaid volunteers who need your cooperation to make the trip safe and rewarding. Please call the leader well in advance for details, approval, or if you plan to cancel. Outings start officially at the trailhead or river access. No guns, pets, or electronic media are permitted on trips.

For general information about outings contact Bob Gestel, (636) 296-8975, or [rgestel@sbcglobal.net](mailto:rgestel@sbcglobal.net). For additional outings submitted after our publication deadline and for changes, please check the Eastern Missouri Group website at <http://missouri.sierraclub.org/emg>.

**Dec 11 (Wed) McCully Heritage Project, Illinois.** This is a five-mile hike on land just East of the Illinois River. This land, which was donated to the State of Illinois, contains forests, glades, a spring and wetlands. Trekking through this mostly forested land should make for an interesting hike. Contact Doug Melville, (636) 288-1055 or [douglas.k.melville@gmail.com](mailto:douglas.k.melville@gmail.com) for further information.

**Dec 14 (Sat) Holiday party and potluck dinner.** Bring your beverage and a dish to share. Call for time and directions. Barb Wall, (636) 529-0477, Marilyn Harlan, (314) 966-8797, or Ann Eggebrecht, (314) 725-1560.

**Dec 14 (Sat) Help us test the water in Fox Creek to see how clean it is.** We will need a few volunteers to help us measure stream flow and do some simple chemical tests. No experience is necessary. Contact either Leslie Lihou at (314) 426-2140 or Jim Rhodes at (314) 821-7758. We normally meet in the morning and are done with the testing around noon.

To participate in one of the Sierra Club's outings, you will need to sign a liability waiver. If you would like to read a copy of the waiver before the outing, please see:

<http://sierraclub.org/outings/chapter/forms> or call (415) 977-5528.

In the interest of facilitating the logistics of some outings, it is customary that participants make carpooling arrangements. The Sierra Club does not have insurance for carpooling arrangements and assumes no liability for them. Carpooling ride sharing or anything similar is strictly a private arrangement among the participants. Participants assume the risks associated with this travel. CST 2087766-40

**Dec 18 (Wed) Deadline for EMG outings from February 15 to April 30.** Mark Schuermann, (636) 394-6265, [mark\\_schuermann@sbcglobal.net](mailto:mark_schuermann@sbcglobal.net)

**Dec 18 (Wed) Indian Camp Creek.** This is a five mile hike with prairie, woodland



*Photo: Marsha Amentrout*

and river bottom features. Meet time 9:30. Tina Mathes: [treasurehunt22@sbcglobal.net](mailto:treasurehunt22@sbcglobal.net) or Katie Wodell [katiekathy@netxero.net](mailto:katiekathy@netxero.net) or (314) 628-9084.

**Dec 20 (Fri) Day hike: To be announced.** Contact [thisissuzanne@yahoo.com](mailto:thisissuzanne@yahoo.com)

**Jan 1 (Wed) News Years Day Hike.** It is a new year but it is another hike across the landscape at Meramec State Park. For the last 15 years we have hiked through the open woodlands, across glades, past free flowing springs and to the Meramec River. We will do it again this year and we hope you can join us. So join me with a good pair of hiking boots, good winter gear,

water, lunch and a sense of Adventure. Paul Stupperich, (314) 429-4352, or [lonebuffalo@earthlink.net](mailto:lonebuffalo@earthlink.net)

**Jan 5 (Sun) Hike off the winter blues, roads permitting. We'll hike the Lone Spring Trail at Cuivre River State Park.** Meet at the trail head (hwy. KK) at 10:00 am. This hike is 4.75 miles, has some steep grades (as defined by the park) and rocky sections. If everyone is up to it, we'll add the 1 mile round trip to Shady 80 Lake. Bring water, snack, lunch, sticks, waterproof rock cover to sit on, and wear layers. Plan to be off the trail by 3 pm. If interested, or need directions, contact Mary Schubert: [choclt3376@gmail.com](mailto:choclt3376@gmail.com).

**Jan 8 (Wed) Silver Lake Park, Illinois - Silver Lake Trail.** This trail covers the East side of Highland Silver Lake in 4.5 miles, out and back on the same trail. A good area for bird watching and fish jumping as you walk through the trees that line the shore. This is an easy and laid back trail on packed earth. Contact Doug Melville, (636) 288-1055 or [douglas.k.melville@gmail.com](mailto:douglas.k.melville@gmail.com) for further information.

**Jan 11-12 (Sat-Sun) Winter backpack.** In Missouri you never know how much winter you might have. Place to be determined closer to the time of the trip. George Behrens, (314) 821-0247.

**Jan 15 (Wed) Join us as we start a New Year of work at Hawn State Park.** Last year we removed over 2 miles of old farm fence from the back country along with removing old tires, 1 back country camp site and many bags of trash. With your help we can do better to help this very special Wild Area. There will be a lot of walking along with some bending. The work is easy to moderate. As always you will need a lunch, water and leather gloves. We will be meeting at the Park Office at 8:30 and will be done at 2:30. For more information: Paul Stupperich, (314) 429-4352, or [lonebuffalo@earthlink.net](mailto:lonebuffalo@earthlink.net), or Bob Gestel, (636) 296-8975, or [rgestel@sbcglobal.net](mailto:rgestel@sbcglobal.net)

**Jan 15 (Wed) Day hike at Klondike Park in St. Charles County.** This is a beautiful park. One of the newer ones in St. Charles. It has a great river overlook and a good climb

to get there. Also, a beautiful quarry lake with sand shores and a bit of prairie. We will meet at 9:30. Tina Mathes: [treasurehunt22@sbcglobal.net](mailto:treasurehunt22@sbcglobal.net) or Katie Wodell at [katiekathy](mailto:katiekathy) or (314) 628-9084.

**Jan 22 (Wed) Graham Cave State Park.** This time we will journey West on Hwy. 70 to the Montgomery City exit (Exit 170). The park is just off the Hwy., 2 miles West. The area was first owned by Daniel Morgan Boone, son of the famous frontiersman who then sold the land to the park's namesake, Robert Graham in 1816. There are three trails totaling 4 miles plus the cave itself. An easy trek for a January outing. Contact Doug Melville, (636) 288-1055 or [douglas.k.melville@gmail.com](mailto:douglas.k.melville@gmail.com) for further information.



Trail Maintenance on Blair Creek, in October Photo: Becky Denney

**Jan 29 (Wed) Day hike at Cedarbluff Trail in Castlewood Park.** This is a hilly five mile hike with river and bluff views. Start time 9:30. Tina Mathes: [treasurehunt22@sbcglobal.net](mailto:treasurehunt22@sbcglobal.net) or [katiekathy@netzero.net](mailto:katiekathy@netzero.net) or (314) 628-9084.

**Feb 1 (Sat) Twelfth Annual Winter Sing-Along Extravaganza.** A group of semi-musical Sierrans of extremely varying skill levels fulfills their musical destiny. Songs range from Stephen Foster to the early Bob Dylan. Betsey has agreed to play harmonica again and Linda has committed to bringing her guitar. Attendees are welcome to bring refreshments. 7 pm at the Sierra Club Office, 7164 Manchester Ave. Call George Behrens at (314) 821-0247. In case of inclement weather: (snow or ice) call George to see if event is cancelled.

**Feb 5 (Wed) Onondaga Cave State Park, Oak Ridge Trail and Deer Run Trail.** This is a five mile hike on two trails with some

spectacular views of the Ozark countryside. The trail ends with a 100 foot overlook of the Meramec River. Contact Doug Melville, (636) 288-1055 or [douglas.k.melville@gmail.com](mailto:douglas.k.melville@gmail.com) for further information.

**Feb 12 (Wed) Join us at Hawn State Park** Last year we removed over 2 miles of old farm fence from the back country along with removing old tires, 1 back country camp site and many bags of trash. With your help we can do better to help this very special Wild Area. There will be a lot of walking along with some bending. The work is easy to moderate. As always you will need a lunch, water and leather gloves. We will be meeting at the Park Office at 8:30 and will be done at 2:30.

For more information: Paul Stupperich, (314) 429-4352, or [lonebuffalo@earthlink.net](mailto:lonebuffalo@earthlink.net), or Bob Gestel, (636) 296-8975, or [rgestel@sbcglobal.net](mailto:rgestel@sbcglobal.net)

**Feb 12 (Wed) Day hike at Eco Park/Katy Trail in St. Charles.** The Eco Park is an area salvaged from the '93 flood and converted to a nature study park. It borders on the Katy Trail. The Eco Park part is about three miles and we can go up the Katy Trail for a longer hike if we want. Start time 9:30. Tina

Mathes: [treasurehunt22@sbcglobal.net](mailto:treasurehunt22@sbcglobal.net) or Katie Wodell at [katiekathy@netzero.net](mailto:katiekathy@netzero.net) or (314) 628-9084.

**Feb 19 (Wed) The Nature Institute, Illinois.** For this hike we will be just across the Mississippi River in Godfrey, Illinois to hike a variety of trails (4 miles total) in The Nature Institute, Olin Nature Preserve. The Preserve overlooks the Mississippi River and contains steep limestone bluffs and other features of karst topography including sinkholes, ravines and bedrock outcrops. We will also find small streams, a waterfall, upland forest and hill prairies. Contact Doug Melville, (636) 288-1055 or [douglas.k.melville@gmail.com](mailto:douglas.k.melville@gmail.com) for further information.

### Thomas Hart Benton Group

<http://missouri.sierraclub.org/thb/outings>

The latest THB outings are now also on Meetup. Please visit <http://www.meetup.com/KC-Sierra-Club-Outings/>

**Dec 7-8 (Sat-Sun) Hobbs State Park, NW Arkansas.** This will be one night out on the easy 9.7 mile Pigeon Roost Loop about 4 hours from KC. This will be a good trip for those with limited winter camping experience. \$5 donation requested. Terry DeFratis, (913) 385-7374, [theerustbucket@aol.com](mailto:theerustbucket@aol.com).

**Dec 14-15 (Sat-Sun) Smith Creek Backpack, Boone County, MO.** Join us as we explore this proposed wilderness areas near Columbia, MO. Only a 2-1/2 hr drive from the KC metro area. This moderate to easy backpack will be on and off trail. Well-behaved dogs and their masters are welcome. Approval and screening by the leader is required for both humans and canines. Appropriate camping gear is required. Leave No Trace principles strictly followed. \$10 donation requested. Paul Gross (816) 228-6563 [wildwoodp@hotmail.com](mailto:wildwoodp@hotmail.com).

**Dec 14 (Sat) Jerry Smith Park, Kansas City, MO.** Take a break from holiday shopping and explore the park's trails through 360 acres of remnant prairie and wooded forest with us. Steve Hassler, (913) 707-3296, [hassler@planetkc.com](mailto:hassler@planetkc.com)

**Jan 1 (Wed) New Year's Day Hike at Lake Jacomo, Blue Springs, MO.** Hike some ravines & woodlands trails. Hopefully there will be snow on the ground. We'll plan on hiking 3-5 miles depending on the weather. Bring lunch, and we'll provide the hot cocoa. \$5 donation requested. Paul Gross, (816) 228-6563, [wildwoodp@hotmail.com](mailto:wildwoodp@hotmail.com)

**Jan 11 (Sat) Winter Hike at Perry Lake, Ozawkie, KS.** Round trip hike of 7.0 miles with nice views of the lake and the occasional eagle sighting. Moderate difficulty due to some steep spots. \$3 donation requested. Tim Cross, (785) 330-3655, [tecross3@gmail.com](mailto:tecross3@gmail.com).

### White River Group

<http://missouri.sierraclub.org/wrg>

The White River Group periodically offers outings, primarily hiking, to White River Group members. If you have ideas for an outing, contact Jennifer Ailor at (417) 581-4018 or [jailor65721@yahoo.com](mailto:jailor65721@yahoo.com).

### Osage Group

<http://missouri.sierraclub.org/osage>

The Osage Group currently has no outings listed. Please check the website for the latest updates.

# Annual Missouri Chapter Sierra Club Ballot Executive Committee Ballot Profiles

**Samuel  
Cummings III**



I am a 26 year old St. Louis, MO progressive with a passion for political involvement and problem solving. A graduate of St. Louis University High School '06 and St. Louis University '11; I started my own software development business. There are three reasons I desire to be on ExCom. First, I have developed professional relationships with both local and state politicians having run for State Representative myself in the city of Saint Louis last August. As an ExCom member I can further the goals of the Sierra Club in a unique way by adding to the diversity of our voice and ensuring our message is heard. Second, I have always cared deeply about the environmental issues of our time, but I feel called to action by local issues such as Coal Ash and national issues like the Keystone Pipeline. My passion for political involvement has really matured during multiple trips to Jefferson City and a trip to Washington DC on Sierra Club's behalf. I would aid the Sierra Club with my talents to ensure we can be proactive watchdogs on energy and environmental issues we hold dear. The third reason is to add to the narrative of the Sierra Club Eastern Missouri Chapter by strengthening relationships with between business, labor and minority groups. Building bridges with nontraditional partners will aid us in our core fights that lay ahead. Coalition building will change the landscape of key strategic issues and allow us to make strides on our core agenda.

**Jim  
Turner**



My wife and I moved to Kansas City last year; we both retired after nearly thirty years of service on the School of Business faculty at Truman State University in Kirksville, MO. I'm active with the local THB Group. I have been chairing Missouri Chapter's Executive Committee for five years, and I hope to continue that work. Our Chapter's staff has grown to three full-time employees. This is enabling Missouri Sierrans for vigorous work to protect democracy, to move Missouri's utilities beyond coal, and to protect our rivers and wilderness areas. As Delegate to the Club's Council of Club Leaders, I have attended annual conferences at Club headquarters and made acquaintance with Club leaders and staff. I co-captained a bus to Washington DC for 350.org's Forward on Climate rally, and I'm supporting local initiatives for divestment of stocks in coal and oil corporations.

**James  
Harmon**



My first term (2011-2013) on the Executive Committee of the Missouri Chapter of Sierra Club approaches its end; and I would welcome an additional opportunity—in this capacity—for service to environmental causes in our state. First term highlights, in addition to ExCom work, included a 2012 St. Louis University solar tour and two demonstrations in Washington, D.C. organized by Bill McKibben—the November 2011 Stop Keystone XL Pipeline and the February 2013 Forward on Climate rallies.

Conservation and Environmentalism are integral to my life since my youth in scouting and graduate school years as member of a Committee to Publicize Crisis Biology (1968-70) and my Heidelberg years as doctoral candidate (1970's) in the Organization for Environment & Nature Protection of Germany (BUND).

A professor at Truman State University (1985-2010), I hosted a weekly Environmental Forum (1988-1990) and promoted recycling. Incorporation of ecological concerns into my art history courses were reported at a 2006 Summer Institute "Integrating Environmental Stewardship Across the Curriculum" at the University of North Carolina, Asheville.

In Kirksville, I chaired a petition drive (2005-06) for Hazel Creek Concerned Citizens Committee whose activism protected our watershed, elected environment friendly city councilors, and established a city watershed management committee. I also worked for Renew Missouri getting Proposition C – "Renewable Energy Standard" on the 2008 ballot.

On a personal level, retrofitting our early 20th century home for energy efficiency is ongoing and culminated with installation of solar panels (2006-7) and solar tube lighting (2013).

**Henry  
Robertson**



I serve as Chapter Energy Chair and Vice-Chair. In my spare time I represent the Sierra Club and other environmental groups as an attorney with Great Rivers Environmental Law Center in St. Louis, fighting new coal and nuclear power plants and advocating for energy efficiency and renewable energy.

Thanks to our Chapter director and a growing staff provided by the Chapter and the national Beyond Coal Campaign, the Chapter has become more visible around the state and more challenging to manage. This is a great opportunity to accomplish things on an unprecedented scale.

We always have lots of issues on our plate—pushing for clean energy, preserving wilderness areas and protecting the Current and Jacks Fork (and lobbying the legislature and endorsing political candidates as we always do). And we still need active volunteers to get the word out about a sustainable future. Communicating, above all, is what we need to do.

I welcome the opportunity to continue representing you on the Chapter Executive Committee.

**Sara  
Merida**



I have been a member of the Sierra Club since I was in high school. I became very active during my undergraduate studies at Truman State University, where I completed a BA in Interdisciplinary Studies emphasizing Environmental Studies. While there, I was secretary and then president of the school's Sierra Student Coalition group, Sierra @ Truman.

I moved back to my native St. Louis for work and school- I am pursuing a master's degree in Nonprofit Management through Washington University. As soon as I moved back to town jumped into activism with the EMG. I have participated in Conservation Lobby Day, assisted with trail maintenance, worked as a judge at the whitewater races, attended mailing parties, and worked the lemonade booth. Currently I'm organizing the second annual Trivia Night and Silent Auction EMG fundraiser, a tradition I helped start last year. For the past year, I have had the honor of serving as the Chair of the EMG ExCom.

I would like an opportunity to serve on the Missouri Chapter Chapter ExCom so that I might continue to play an active role in protecting our resources for future generations, and further my skills as a leader in the nonprofit field.

### Ballot instructions:

Carefully read ALL instructions before completing or mailing your ballot. **Ballots must be received by 5 p.m. on Saturday, January 3, 2014** in order to be counted.

- 1) You must use this ballot with your address label attached to the back. The ballot portion will be detached from the label portion before counting. Ballots without address labels will not be counted.
- 2) Vote for up to five (5) candidates. Indicate your choices by marking an X through the box to the left of the candidate's name. If yours is a joint membership, two (2) members may vote, each in their own column.
- 3) Put the ballot into an envelope, write **BALLOT** on the outside, and mail it to:

**Elections Committee  
Sierra Club  
7164 Manchester  
St. Louis, MO 63143**

- 4) For questions, including the date, time, and place of ballot counting, please call the Sierra Club office at 314-644-1011 or 800-628-5333.

<b>BALLOT</b>	
<b>Missouri Chapter ExCom Ballot</b>	
<b>Household voter 1</b>	<b>Household voter 2</b>
<input type="checkbox"/> Samuel Cummings III	<input type="checkbox"/> Samuel Cummings III
<input type="checkbox"/> James Harmon	<input type="checkbox"/> James Harmon
<input type="checkbox"/> Sara Merida	<input type="checkbox"/> Sara Merida
<input type="checkbox"/> Henry Robertson	<input type="checkbox"/> Henry Robertson
<input type="checkbox"/> Jim Turner	<input type="checkbox"/> Jim Turner
<input type="checkbox"/> ..... <small>(write-in candidate above)</small>	<input type="checkbox"/> ..... <small>(write-in candidate above)</small>

## Missouri Chapter Executive Committee elections

By Caroline Pufalt, Nominating Committee Chair

The Sierra Club in Missouri is organized in a state-wide chapter, and in four “groups” which cover the state but are centered around Columbia (Osage Group), Kansas City (Thomas Hart Benton Group), Springfield (White River Group) and St. Louis (E.Mo.Group). The chapter is managed by a volunteer Executive Committee (or “ExCom”), nine of whose members are elected at large - meaning cho-

sen in an election in which members across the state can participate. The ExCom makes important decisions for the Missouri chapter about financial and conservation issues.

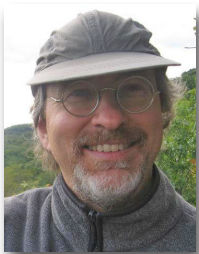
Please read the statements of the candidates who are running for the ExCom, and then use the ballot in this newsletter to cast your vote. Please mail it so that it arrives at our St. Louis office by the January 3rd deadline.

Cut out ballot and mail



### New Staff and Interns

**Andy Knott** – Andy Knott is the new Sierra Club Beyond Coal Campaign Representative for Missouri, charged with coordinating statewide strategy for moving Missouri from coal to clean energy. Before moving to Missouri in September, his 28 year career in Indiana and Michigan has focused on air and water quality and energy policy for environmental organizations and state and tribal governments including the Hoosier Environmental Council and the Watershed Center Grand Traverse Bay.



**Brian Ettling** - Brian Ettling is a new Chapter Organizer. For the past 21 years, Brian Ettling was a park ranger in Crater Lake National Park, Oregon. October 2011, Brian co-founded the Climate Reality Meetup Group in his hometown, St. Louis, Missouri. January 2013, Brian volunteered



in Missouri Sierra Club’s Beyond Coal campaign, which he moderated a Clean Air Discussion at Cliff Cave Library last March. In July, he wrote an opinion editorial in the St. Louis Post Dispatch criticizing Meramec Coal Plant’s pollution.

**Lev Guter** - Lev started work in Missouri in August as an Organizing Representative for the Sierra Club Beyond Coal Campaign. Before that, he had been working as staff with the Beyond Coal campaign in Arkansas since October 2009. Originally from upstate New York, he now lives in St. Louis with his wife, who is a St. Louis native. Lev has studied environmental law, politics and economics, and is eager to help move Missouri beyond coal.

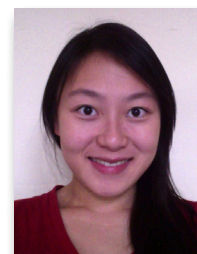


**Maddy Salzman** - Maddy Salzman is an apprentice with the Beyond Coal Campaign. Hailing from Wellesley, Massachusetts, Maddy Salzman originally moved to St. Louis to study environmental studies and architecture at Washington University. Her favorite pastimes include



hiking and rock climbing, so she spent the past two summers working as an adventure trip leader in Anchorage, Alaska and Seattle, Washington. In March 2013 she gave a TEDx talk about socially responsive environmentalism, which she is excited to put into action while working for the St. Louis Sierra Club.

**Menglei Zhang** - Menglei Zhang is an intern with the Missouri Chapter. and an international law student who was born in Shenzhen (China), a coastal city close to Hong Kong. She recently graduated from Washington



University School of Law with LL.M degree of U.S Law. Her interest in environmental legislation with her experience in both Chinese and American law school further her understanding of environmental advocacy.



Missouri Chapter  
7164 Manchester Ave.  
Maplewood, MO 63143

**NEWSPAPER  
DATED MATERIAL**

Non-Profit Org.  
U.S. Postage

**PAID**  
St. Louis, MO  
Permit No. 3274



*Yellow-crowned night heron in the Irish Wilderness  
A Photo Exhibition on Missouri Wilderness by Toni Arm-  
strong and Richard Spener is currently displayed at the  
Missouri History Museum in St. Louis.*

### **White River Group Executive Committee Election**

If you are a member of the White River Group you are eligible to vote in the Executive Committee election. All White River Group members have the code WRG on their mailing address label. This election will be held online – you can learn about the candidates at this link: <http://tinyurl.com/wrg-election> and you can vote at this link: <http://tinyurl.com/wrg-vote>. Instructions appear before the ballot. You must vote before 11:59 pm on December 31, 2013. If you have questions, please contact Elections Committee chair Jim Turner at [jlturner@socket.net](mailto:jlturner@socket.net).

### **INSIDE**

- Progress on Energy Efficiency in KC & Joplin 1
- Two Big Building Codes Victories ..... 1
- Draft Plan released for the Ozark National  
Scenic Riverways ..... 2
- Our Energy Efficient Home ..... 3
- Sierra Club Opposes Proposed Coal Ash  
Landfill in Springfield ..... 3
- Sierra Club outings ..... 4, 5
- 2014 Sierra Club Missouri Chapter Ballot ..... 6
- New Staff and Interns ..... 7
- 2014 Sierra Club White River Group Ballot ..... 8