



# Palm and Pine

A publication of the San Gorgonio Chapter of the Sierra Club  
Serving Riverside and San Bernardino Counties



Volume 39 Number 5

Protect America's Environment For our Families... For our Future

SEPTEMBER—OCTOBER 2009

## In This Issue

|  |    |
|--|----|
| <b>Contacts for Chapter office</b> .....                               | 2  |
| <i>Plus website &amp; membership</i>                                   |    |
| <b>"Free Vacation"</b> .....   | 2  |
| <i>You do the work/the PCTA does the rest</i>                          |    |
| <b>Group News</b> .....  | 3  |
| <i>Moreno Valley, Mountains, Mojave, Santa Margarita, Los Serranos</i> |    |
| <b>Calendar</b> .....  | 5  |
| <i>Something for everyone: Outings, Activities and meetings</i>        |    |
| <b>Chapter Positions</b> .....   | 8  |
| <i>Contact information</i>   |    |
| <b>Island Hopping</b> .....  | 9  |
| <i>Last chance this year</i>   |    |
| <b>Huts, lodges available</b> .....                                    | 10 |
| <i>Local Club mountain facilities</i>                                  |    |
| <b>Sierra Student Coalition</b> .....                                  | 11 |
| <i>Get involved/get trained</i>  |    |
| <b>Membership Application</b> .....                                    | 11 |
| <i>Not a member yet?</i>   |    |
| <b>Sierra Club Calendars</b> .....                                     | 12 |
| <i>Purchase now at a discount</i>                                      |    |



## International Day of Climate Action October 24

By Ann Olander

The Los Serranos Group invites you to participate in Bill McKibbin's latest global movement to fight climate change on October 24, 2009. The event is registered on the movement's website so check it out at [www.350.org](http://www.350.org) however the information you need is in the boxed area below.

A global climate movement to help mobilize equitable solutions to the cri-

sis, the current focus is on October 24<sup>th</sup>, International Day of Climate Action when people around the globe are participating in various activities. The Los Serranos Group is sponsoring a bike ride/walk in Rancho Cucamonga along the Rails-to-Trails pathway - known as the Pacific Electric Trail, which has a paved path for bikers alongside a dirt path for walkers. The trail is mostly flat with great views of the mountains, making for a fun outing. Also, one Los

Serranos member worked hard through the years to establish that trail.

The October 24<sup>th</sup> date was set to deliver a strong message to the world's decision makers before December's UN climate negotiations in Copenhagen. Like other folks around the world, we'll submit a group photo taken next to the number 350. Why 350? That's the number (in parts per million) which leading scientists say is the safe upper limit for carbon dioxide in the atmosphere. Above that amount, they say we can't have a planet "similar to the one on which civilization developed and to which life on earth adapted."

### About the Pacific Electric Trail

The Pacific Electric Railway was once the world's largest interurban and street railway system, extending from Los Angeles to its outlying regions. The building of the railway through the Inland Empire was crucial to the devel-

(Continued on page 12)

### PACIFIC ELECTRIC TRAIL—RANCHO CUCAMONGA

Meet at 8:00 a.m., October 24 at Rancho Cucamonga Central Park, Milliken Avenue and Baseline Road. The roundtrip bike or walking route is 10 miles, but participants can set shorter distances. Come along and join the fun! Bring a friend and be a part of this world-wide movement for a just and safe climate (See your photo on the internet after the event).

**Bike leaders are David Thorne 909-981-5813 and Joe Whyte 909-949-0899. For information contact [annolander2000@yahoo.com](mailto:annolander2000@yahoo.com)**

## Membership Meetings

**Tuesday, September 1**

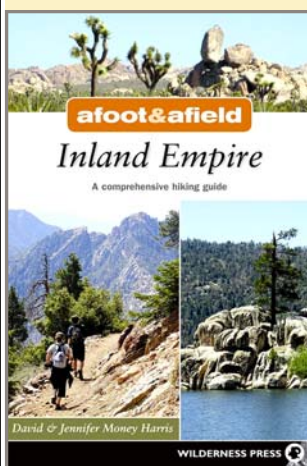
**Afoot & Afield Inland Empire**  
New book features noteworthy hikes in the Inland Empire.

**Tuesday, October 6**

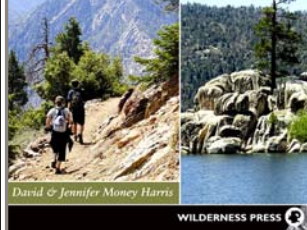
**Hetch Hetchy**  
Discover Hetch Hetchy narrated by Harrison Ford.

**Programs begin at 7:30 p.m. at the San Bernardino County Museum in Redlands**  
(California St exit 10 Fwy)

## Afoot & Afield Inland Empire



The September 1 Chapter Program will feature David Money Harris who along with his wife Jennifer has published this new comprehensive guide to local trails.



The Inland Empire—the area east of Los Angeles and located primarily in San Bernardino and Riverside counties—is known as Southern California's big backyard. And with its

mountain, foothill, valley, and desert recreational opportunities, it's a hiker's paradise. *Afoot & Afield Inland Empire* describes nearly 200 noteworthy hikes ranging from easy to very strenuous in this first comprehensive hiking guide to the length and breadth of Inland Empire. These hikes explore Southern California's three tallest mountains, the stark beauty of the high desert, including Joshua Tree National Park and Mojave National Preserve, as well as trails that wind through urban and regional parks. Each hike is shown on custom-created maps that also include GPS waypoints: the maps alone are worth the price of the book.

Besides exploring the mountains and deserts of Southern California for the past decade, David teaches Engineering at Harvey Mudd College and Jennifer teaches English composition and studies Early Modern English Literature.

## Hetch Hetchy...A National Treasure, Submerged

Despite intense opposition from John Muir and the Sierra Club, including most of the nation's leading newspapers, Congress passed the Raker Act in 1913 allowing the city of San Francisco to destroy Hetch Hetchy. The City built a dam and reservoir, drowning this beautiful valley, even though other less-damaging sites existed.



Sierra Club

But now the city is making plans to mend and upgrade its water-supply infrastructure, which is in serious disrepair. San Francisco's \$3.2 billion water system overhaul provides a once-in-a-lifetime opportunity to reassess the need for the dam.

This Environmental Defense's report narrated by Harrison Ford details how, with the removal of the dam, Hetch Hetchy Valley could be restored to its former glory. This most in-depth study conducted to date, finds there are cost-effective engineering solutions that would continue to supply the Bay Area with the same high-quality drinking water from the Tuolumne River while returning Hetch Hetchy to Yosemite National Park.

Hetch Hetchy Valley lies along the western slope of the Sierra Nevada mountains, 160 miles east of San Francisco and 3,700 feet above sea level. The same

Study Shows Hetch Hetchy Can Be Restored

glacial forces that sculpted Yosemite Valley created Hetch Hetchy. Glaciers gouged through the Tuolumne River canyon, leaving towering granite domes and cliffs bejeweled with waterfalls that plunge hundreds of feet to the valley floor.

Considering the great height of the snowy mountains about the valley, the climate of Yosemite is remarkably mild. Native Americans named the valley Hetch Hetchy for the grasses that flourished in its park-like meadows. The vegetation was rich and luxuriant. The tallest pines were over 200 feet high; the trunks of some of the oaks measured from 6 to 8 feet in diameter; violets, lilies, golden-rods, ceanothus, manzanita, wild rose, and azalea made broad beds and banks of bloom in the spring.

## The Challenge of Human Population Growth...Presented by John Seager September 27

John Seager, President and Executive Director of Population Connection (formerly Zero Population Growth) will speak at the San Gorgonio Chapter office at 7:00 p.m., Sunday, September 27.

The office is located at 4079 Mission Inn Avenue between Market and Brockton in downtown Riverside. Refreshments will be served. No reservation is required however for additional information please contact Ladd Seekins at [ladd.g.seekins@gmail.com](mailto:ladd.g.seekins@gmail.com).

Since 1968, Population Connection (formerly Zero

Population Growth) has been educating young people with its award-winning Population Education program and advocating for progressive action to stabilize world population at a level that can be sustained by Earth's resources.

Overpopulation threatens the quality of life for people everywhere. Population Connection is the national grass-



(Continued on page 2)

## Population

(Continued from page 1)

roots population organization that educates young people and advocates progressive action to stabilize world population at a level that can be sustained by Earth's resources.

As America's largest grassroots population organization, we work on three main issue areas: 1) Protecting the Planet. 2) Defending Women's Rights. 3) Ensuring Social Justice.

Mr. Seager was formerly with the U.S. Environmental Protection Agency and also served as Chief of Staff, Communications Director and District Director for U.S. Representative Peter H. Kostmayer. He holds a BA in Political Science from Trinity College in Hartford, CT. Mr. Seager was appointed President and Chief Executive Officer effective January 2005.

## Palm and Pine Advertising

### Display Advertising Rates (Black and White)\*

Palm and Pine pages are 9 1/2 inches wide by 14 1/2 inches deep. There are four columns per page. Each column is 2 1/4 inches wide. Display Advertising is charged at a rate of \$12.50 per column inch.

### Classified Advertising Rates

Personal: \$0.25 per word. \$5.00 minimum.  
Commercial: \$0.50 per word. \$10.00 minimum.  
Classified advertising is accepted to a maximum of 8 lines (about 45 characters to the line).

### Circulation and Distribution

Rates are based on an average circulation of 5,500 per issue. The Chapter member subscription is included in membership dues. Subscriptions rates for non-members is \$9.00 for six issues. Single copies are \$1.50. The newsletter is published and distributed on or before the 1st of the month, six times each year beginning January 1.

### Deadlines

Deadline: 1st of the month preceding the issue date. (Feb 1, Apr 1, Jun 1, Aug 1, Oct 1, Dec 1)

### Submission

E-mail copy directly to ralphsalisbury@att.net  
Send payment to: Sierra Club, San Gorgonio Chapter, 4079 Mission Inn Ave., Riverside, CA 92501. Please note that payment is for Palm and Pine advertising and make Attn: Ladd Seekins. Payment must be received by treasurer prior to deadline. Allow at least 2 weeks.

## The Pacific Crest Trail Association Offers Free Vacations...*You do the work/they do the rest*



### Trail Projects - What to bring?

For all trail projects, unless otherwise indicated, bring car/tent camping gear, heavy gloves, eye protection, sun protection (hat and sunscreen), brush protection (long sleeves & long pants), sturdy boots, daypack, flashlight, and water bottles. Warm clothes and rain gear are in order especially for spring and fall projects. Please let us know if you are coming so we can arrange food, equipment, and supervision, and to receive any last minute instructions. By all means come out even if you can't stay the entire time, and if you are available at times other than those listed let John know. We have lots of ongoing projects or new ones coming up all the time. **Adventure Pass** – don't forget to bring one if project is in a So. Cal Nat. Forest. If you don't have one, let me know beforehand and leader will arrange for an admin pass.

### What is involved?

Moderate to strenuous physical activity cutting brush with saws and loppers, pulling and disposing of cut brush out of sight, grubbing out root balls with a Pulaski, shaping tread with a McLeod, re-building rock walls, or repairing water bars to re-establish drainage control. Certified volunteers will be using chain and brush saws and other equipment. A hike in and out of several miles carrying tools or personal camping gear may be required. Some projects involve working with packhorses and mules. We assume you are experienced in mountain travel, camping out, safety, working on a crew under

direction, and wilderness hygiene. If you have questions about these subjects or if you have health concerns be sure to bring them up with the leader prior to the trip. We ask all volunteers to fill out a form answering what we call 'Twenty Questions'. This gives us an idea of your experience, special aptitude, physical limitations or concerns, and emergency contact person. *Every volunteer must sign up each day with the Crew Leader to be covered for Workman's Compensation*, and to make sure that no one gets left behind at the end of the day.

### What does PCTA provide?

Don't worry if you have not been out with us before. We provide food (unless indicated otherwise), water, tools, hard hats, orientation/instruction, supervision and a GREAT time.

### 1) September 18-24 (Fri.-Thur.)

Section "D". North Fork. Angeles National Forest. Join the NWSA Americorp crew at the Northfork Station to build three rock retaining walls which will stabilize the tread, trail south. The crew will also put in several drainage features and do some minor tread repair. More information TBD. Please contact Suzanne Wilson (951-492-9836) or Jennifer Tripp (916-349-2109 x17) for more information

### 2) September 29—October 7

Section "C". Mission Creek. BLM Palm Springs Field Office. The NWSA Americorp crew will head into Mission Springs from the Stone House with packer support, about 5 miles into the backcountry. The crew will hike about 1 mile to work each day. They will be constructing rock retaining walls and drainages to repair flood damage from Oct 2008. Meeting at the Stone House on 9/18, meeting time TBD. Please contact Suzanne Wilson (951-492-9836) or Jennifer Tripp (916-349-2109 x17) for more information.

## Palm and Pine

USPS 341-430

ISSN 1090-9974

A bi-monthly newspaper serving Riverside and San Bernardino counties.

Published by the

### Sierra Club

San Gorgonio Chapter  
4079 Mission Inn Avenue  
Riverside, CA 92501-3204  
(951) 684-6203

Fax (951) 684-6172

<http://sangorgonio.sierraclub.org>

The Palm and Pine is published six times per year January/February, March/April, May/June, July/August, September/October and November/December. Submit all articles to the Editor by the 5th of the month prior to issue. Preferred format is electronic mail. The Editor reserves the right to edit all work for reasons of space, clarity or libel. If you wish to have your photos or disks returned, please include a stamped, self-addressed envelope. Outings must be submitted to the appropriate Outings Chair.

### Editor

Ralph Salisbury  
2995 Floral Ave, Riverside, CA 92507  
(951) 686-4141  
Fax (951) 276-0312  
e-mail: ralphsalisbury@att.net

### Outings Calendar Submissions

Ralph Salisbury  
2995 Floral Ave, Riverside, CA 92507  
(951) 686-4141  
e-mail: ralphsalisbury@att.net

### Webmasters

Linda Jones  
lindareej@infowest.com  
Ralph Salisbury  
ralphsalisbury@att.net  
<http://sangorgonio.sierraclub.org>

### Meetings Calendar Submissions

Ladd Seekins  
22418 De Soto St, Grand Terrace, CA 92313—5474  
(909) 888-0161 Weekdays  
(909) 825-4427 Weekends & evenings  
e-mail: lgseekins@sbcglobal.net

### Non-Member Subscriptions (\$9.00)

Sierra Club, San Gorgonio Chapter  
4079 Mission Inn Ave  
Riverside, CA 92501-3204  
(Sierra Club members not members of the San Gorgonio Chapter: Supply Club membership number.)

### Member Change of Address

Sierra Club, Change of Address  
PO Box 52968  
Boulder, CO 80322-2968  
(Be sure to supply Membership number)

The Palm and Pine is published bimonthly. Periodicals postage paid at Riverside, CA

### Membership Information

There is a membership coupon in this issue. You can also contact the Membership Chair (see Chapter Executive Committee Directory this issue) or the Sierra Club office in San Francisco (415) 977-5663.

### POSTMASTER:

Send address changes to:  
Palm and Pine  
Sierra Club San Gorgonio Chapter  
PO Box 53968  
Boulder, CO 80322-2968

# Preserve The Future

**N**ot everyone can make a large gift to protect the environment during their lifetime, but you can preserve the environment for generations to come by remembering the Sierra Club in your will.

There are many gift options available. We can even help you plan a gift for your local Chapter.

For more information and confidential assistance, contact:

John Calaway  
Director, Gift Planning  
85 Second Street, 2nd Floor  
San Francisco, CA 94105  
(800) 932-4270  
[planned.giving@sierraclub.org](mailto:planned.giving@sierraclub.org)



# Group and Section News

## Moreno Valley Group

By Ann McKibben

The election for the Moreno Valley Group Executive Committee is coming up this fall. If there are issues that you are concerned about and you would like to run for the executive committee, please contact Theresa Carson at (951) 242-4752 by the end of September.

Lake Perris State Recreation Area is on the southern boundary of the city of Moreno Valley and provides wide variety of recreational opportunities for local residents and visitors. One recent recreational opportunity for children was the Junior Ranger Day Camp which was held in early summer. Fifteen youngsters, ages 8 to 14, participated in the inaugural camp and it provided opportunities for nature study, archaeological "digging", hiking and an island adventure. District Archaeologist Larynn Carver demonstrated what an archaeological site might look like using peanut butter sandwiches studded with M & Ms, raisins, and sugar crystals. After the "archaeo lunch" the Junior Rangers got to try their hand at a mock dig site looking for "treasures" that might reveal clues to the area's past. Another exciting event during the week was watching the Riverside County Search & Rescue dogs training at Lake Perris. The handlers demonstrated searching for lost people, and each junior ranger experienced being lost and found by the search and rescue dogs. The campers also got to experience touching and holding a gopher snake.

The week was filled with many experiences and all were within natural settings and done without gadgets. The program was funded with donations from the California Parks Foundation, the Lake Perris Interpretive Association and Wal-Mart. The experienced staff at Lake Perris did a phenomenal job of making the event happen. Lake Perris State Recreation Area is open seven days a week from 6:00 a.m. to 10:00 p.m. Call (951) 940-5600 for more information. The Ya'i Heki' Regional Indian Museum located at the recreation area is open Saturday & Sunday, 10:00 a.m. to 4:00 p.m. and Wednesday, 10:00 a.m. to 2:00 p.m. Call (951) 940-5656 for information about the museum. The LPSRA web page is: [http://www.parks.ca.gov/?page\\_id=651](http://www.parks.ca.gov/?page_id=651)

Theresa Carson has organized three hikes for the month of October. The first hike will be held at Hidden Springs on October 8, 5:00 p.m. Please check the group's web page for more information on the fall hikes and to verify the start time and meeting place: <http://sangorgonio.sierraclub.org/moreno-valley/index.html>

An important meeting will be held September 16. The Riverside County Planning Commission will hold a 'discuss and continue' meeting regarding the Villages of Lakeview (VOL) Specific Plan 342. The meeting will be held at the Riverside County Administrative Center, 4080 Lemon Street, Riverside. The agenda for the meeting will be posted on the county web page at: [http://www.rctlma.org/planning/content/hearings/pc/current\\_pc.html](http://www.rctlma.org/planning/content/hearings/pc/current_pc.html) Click on September 16 for the agenda and to verify the meeting topic. As we have mentioned previously, comments on the Draft Environmental Impact Report were due April 22, 2009. The Planning Department is reviewing all comment letters and working on responses to comments. The Villages of Lakeview project proposes to build approximately 10,000 residential units in the communities of Lakeview and Nuevo. Approximately 2,800 units are planned next to the southern boundary of the San Jacinto Wildlife Area (SJWA), a 19,000 acre Department of Fish & Game facility. The SJWA is also a cornerstone reserve in the Riverside County Multi-Species Habitat Conservation Plan which is, in theory, supposed to preserve and protect the county's threatened and endangered species in perpetuity. Please plan on attending the meeting and voice your concerns (or donate your 3 minutes to another speaker) about the project and the devastating effects it will have on the San Jacinto Wildlife Area. Light pollution, air pollution, feral animals, and illegal entry by residents onto wildlife area lands which would harm rare and endangered plant and animal species, building adjacent to the flood plain of the San Jacinto River, collapsible soils, and loss of prime agricultural lands are some of the issues. Also the jobs to housing ratio (where are the jobs for future residents?), leapfrog development, how will the California drought affect availability of water for the project, and more importantly reclaimed water (which the SJWA wetlands depend on) could be diverted. Important questions need to be asked regarding this project and in particular the Planning Commission needs to focus on compatible, transitional land uses that are more appropriate and logical on the border of the wildlife area. For more information on the project, contact project planner Matt Straite, Riverside County Planning Department at (951) 955-8631. The Friends of the Northern San Jacinto Valley have information posted at their web site: [www.northfriends.org](http://www.northfriends.org) You can e-mail the Moreno Valley Group at: [movalleygroup@yahoo.com](mailto:movalleygroup@yahoo.com) or the

Friends at: [northfriends@northfriends.org](mailto:northfriends@northfriends.org) if you would like more information.

The court date for the Sierra Club lawsuit against the city of Moreno Valley challenging their approval of the Highland Fairview Corporate Park project was scheduled for August 10. The Highland Fairview Corporate Park project would locate a 1.8 million square foot warehouse in eastern Moreno Valley along Highway 60. Part of the project would house a Skechers distribution center, one that would distribute

their products for the western United States and bring thousands of trucks to Highway 60 and increase the city's air pollution. As we reported last time, the Sierra Club sued the city of Moreno Valley over their approval of the Highland Fairview Corporate Park because of the project's health, safety and welfare effects on the city's residents. Call George Hague, Group Conservation Chair at (951) 924-0816, or e-mail the Moreno Valley Group at: [movalleygroup@yahoo.com](mailto:movalleygroup@yahoo.com) for more information

(Continued on page 10)

## Mountains Group

By Bob Sherman

The Mountains Group has started its **election process**. September 21<sup>st</sup> is the deadline to accept candidates for the Excom. For those not chosen, but interested in running there is a petition request process that must be complete by Oct. 5th. Ballots will be mailed on Oct. 26<sup>th</sup>, if needed. Results will be announced in early December. The new Excom members two year terms will start January 1<sup>st</sup>. For further information on the election rules contact Sue Walker, chair of the Nominating Committee at (909) 337-1279.

**It's back...**the Royal Rangers Adventure Camp Project in Twin Peaks is again posing environmental threats to our mountain community. The proposal to establish a year-round campground and conference center poses significant threats to our water supply, wildlife habitat, traffic, air quality and evacuation plans. Three years after initial consideration by the County Board of Supervisors, a new (voluminous) Draft EIR has been released by the project proponents, the Assemblies of God. As the process stands as of the writing of this article, there is only a mere 45 days for the public to give informed comment. Further, there has been a markedly disparate level of notification, both factors severely curtailing the public's ability to carefully evaluate project impacts. Original plans for the camp, on a 50-acre site adjacent to Highway 189, called for a maximum of 1,000 people onsite. Revised plans reduce that to 350, but still call for a 57,599-square foot conference center, (fashioned after a western fort, with four 38-foot towers). Plans also call for an enclosed amphitheater, an enclosed gun range, a 25-yard archery range, a swimming pool with a capacity of 300 people, 42 tent sites, an outdoor chapel, recreational areas (including two apparatus courses, two basketball courts and nature trails), staff cabins, an

office cabin, infirmary, bathrooms and a maintenance shed. The Mountains Group, along with other local citizen's organizations, will request that the comment period be extended for at least six months and that full documentation of the projects details be provided to all interested parties. We further believe that another series of full public hearings should be held, and that the project should return to the County Planning Com-



(From left) Board members Sherry Noone, Marta Hethmon and Dave Barrie staff our exhibit at the June 20 Forest Festival in Lake Arrowhead Village.

mission for its review and a re-issued recommendation to the Board of Supervisors.

On July 13, the Mountains Group had a **presentation by bee expert Don Stephens**. His informative and interesting talk to our group, at St Richards Episcopal Church, covered a myriad of fascinating topics, including why bees are vitally important ecologically, why their populations are decreasing (pesticides and losses of varied, natural habitats being two chief reasons), bee-keeping, the importance of bees to sustainable agriculture and community supported agriculture. His talk was a cogent reminder of how our ecological system is a fabric that depends upon all of its strands, with bees being one of the more important of those "strands".

**350 is the red line for human beings, the most important number on the planet.** The most recent science tells us that unless we can reduce the amount of carbon dioxide in the atmosphere to 350 parts per million, we will cause huge and irre-

(Continued on page 9)

# Group and Section News

## Mojave Group...*The Mountain is Disappearing*

By Jenny Wilder

Every one of our residents has the right to breathe clean air and drink clean water. Without these two items, humans get sick and suffer a miserable demise. In our daily rush to improve the quality of our life, let us not forget these two vital items. It seems that in our daily confusion to seek and keep employment which provides food and shelter, we forget the basics of clean air and water in a pattern of greed disguised as a better way of life. The bigger your house, the larger your estate, the more fancy your cars are symbols of affluence that indicate you are successful and "living well". People all around the world are shown via television, movies and the internet that this is so and they are rushing to join the carnival. We are blinded by advertising and corruption and forget to take care of our basic needs.

In the last issue I wrote about water, and now it is time to focus attention on clean air.

The Mojave Desert Air Quality Management District (MDAQMD) has a system of monitoring our air quality. Our desert air was for years considered clean and many people moved here to enjoy this resource. This summer I subscribed to the email alerts from MDAQMD, which anyone can do by going to their website (<http://www.mdaqmd.ca.gov/index.aspx?page=6>). The web site includes an interesting map which shows via a color code, the locations and levels of unhealthy air throughout any given day.

Over the years I have noticed that our surrounding mountains are disappearing just as they do when seen from the Inland Empire. They are obscured in a haze and it is getting worse. According to the MDAQMD much of the dirty smog is blown in through the Cajon Pass and the worst air settles around Phelan, Hesperia, Lake Arrowhead and Big Bear. That lovely area just off the freeway has a dark shadow of ozone imported from a valley below. I have heard that this dirty air from Los Angeles, Orange County and the Inland Empire (South Coast Air Quality Management District) also infiltrates the otherwise clean air in Santa Clarita, indicating that we are all in this together. In fact, the AQMD website (<http://www.aqmd.gov/>) states that all of Orange County and the urban portions of Los Angeles, Riverside and San Bernardino counties constitute the **smoggiest region of the U.S.** That also means that our region contributes significantly to Global Warming.

What are they doing in the Inland Empire to clean up the air so it doesn't blow our way, and what are we doing here in the Victor Valley to ensure that our air doesn't get any worse? Has the quality of their air improved over the last decade? When the Inland Empire refuses to allow a truck stop location in their area because of its unhealthy effects, or any other polluting industry, should we then allow it in our neighborhood? At what point will our valley no longer sustain air polluting types of industry?

Unfortunately, most projects that are proposed by developers do not ade-

quately take into consideration our right for clean air and clean water. The CEQA (California Environmental Quality Act) documents analyzing the effect of any development project on the environment and current residents in Southern California should be detailed enough to take all into consideration. All too often, this is not the case. Mostly, the documents seem to merely indicate that "the public has been informed" and we continuously hear that a project will fill a vital need for local jobs or provide much needed housing. No project should ever compromise our right to clean air and clean water and no project should be allowed to significantly impact our quality of life by producing excessive noise, light or other pollution. Please see how the AQMD describes the California Environmental Quality Act (CEQA 1970) in a separate text box.

I recently reviewed an Environmental Impact Statement for a large development in another area, and affluent area, which was far more detailed and specific than the few that I have seen here. Environmental Impact Statements are usually long and studying such documents and making comments is not a favorite past time for most people even if they had the education and time to do so. I haven't seen any local classes specifically for this important community responsibility and no mention of those documents even becoming available, let alone discussed in the local newspaper. Education is the key.

The layer of smog already follows the I-15 freeway, and yet the San Bernardino Associated Governments (SANBAG which is the council of governments and transportation planning agency for San Bernardino County <http://www.sanbag.ca.gov/>) is busy contemplating that commerce through the ports in and near Los Angeles will increase considerable over the next decade or two, and the products will be transported via truck using the I-15 and I-5 corridors. They are busy trying to figure out how to cope with the increased traffic and seem to forget about the quality of our air. This increase in commerce seems to be non-negotiable even though most of the unhealthy air comes from "mobile" sources such as diesel trucks and cars.

Please remember, that you too have the right to clean air and clean water. As a member of the Sierra Club you can be assured that someone is looking out for these basic needs, but on a local level I am seeing it is no easy task. We need all the help we can get.

In the May/June 2009 issue of the Palm and Pine (page 11), George Hague of the Moreno Valley Group described a warehouse development project (along Hwy 60) and the impact of the trucking industry on the quality of our air. Please re read that article. It applies to the Victor Valley in every respect! Other projects in the Moreno Valley area (Ann McKibben's article on Page 3 of the same issue) could also be in the Victor Valley. The Mojave Desert Air Quality Management District is another non attainment area –

(Continued on page 11)

## Santa Margarita Group

By Jim Mitchell

Theoretically, the Santa Margarita Group took July and August off for the summer... no scheduled General Meetings and no scheduled Outings. But in fact, it was no vacation for many of us. On July 17 Granite Construction released their long awaited Draft Environmental Impact Report that they hope will convince the Riverside County Board of Supervisors to approve a mining permit for the mile long, 1200 feet deep Liberty Quarry proposed for the pristine foothills just south of Temecula.

The DEIR is 7,000 pages long and it is now up to quarry opponents to analyze it and prepare comments that will hopefully convince the Supervisors to deny a mining permit.

One of the first things that catches your eye in the DEIR is in the Executive Summary that lists reasons where the quarry would have a significant impact on the surrounding area. These include air quality, biological resources, transportation and traffic. The Summary says the impact in these specific areas "would remain considerable and unavoidable" regardless of what is done to mitigate the harm.

Well over a year ago, the Santa Margarita Group as well as the San Gorgonio Chapter took a position in opposition to Liberty Quarry. There is concern that Liberty Quarry would violate the County's Multiple Species Habitat Conservation Plan (MSHCP). An active and very important wild life corridor passes through the proposed quarry area. There is also fear the quarry would disrupt San Diego State University's 4400 acre research and educational Ecological Reserve. Also at issue is possible damage to the nearby Santa Margarita River, one of the last free flowing rivers in California and a source of water for Camp Pendleton.

There is also strong opposition to the quarry from local residence, businesses and organizations in the surrounding communities of Temecula, Murrieta, Fallbrook and Rainbow. Among the worries is the potential health risk a large quarry operation

that straddles the prevailing wind s that feed the Temecula Valley. Among those demonstrating this concern are more than 90 local physicians that have declared their opposition to the quarry because of their fear deteriorating air quality would hurt their patients.

There is also wide spread concern Liberty Quarry would financially damage many local businesses particularly those that depend upon tourism, an important source of local revenue. Area farmers and growers are also concerned the quarry would divert already scarce water supplies needed to irrigate avocado and other crops.

The primary focus of the Santa Margarita Group at this point is to convince the Riverside County Board of Supervisor to vote against a mining permit when it reaches them for a decision. And many agree it is going to be an uphill battle all the way despite all of the clear indications that the Temecula Foothills is the wrong place for a quarry mine.

Other important things the Santa Margarita Group is doing, Conservation Chair Pam Nelson and Program Chair Lynn Davis report they have a lot planned for the Fall in key areas of wilderness, land stewardship and wildlife. Wendy Sparks of the North San Diego Wild Heritage Campaign will discuss Darryl Issa's proposed wilderness bill at the September 24th General Meeting. The bill, which would add over 20,000 acres to the Beauty Mountain and Agua Tibia wilderness areas is currently out for public comment through August 17. Jennifer Taylor, Bureau of Land Management, will explore volunteer opportunities for the Group as stewards of wilderness areas and watershed territory, to join in October cleanup events. Wildlife, habitat and environmental pressures will highlight our November meeting. Several social mixers are being planned for our Fall season, with details to be announced within a few weeks.

So, the Santa Margarita Group has a lot going on in the months ahead.

## Los Serranos Group

By Mary Ann Ruiz

**LOS SERRANOS NEEDS LEADERS!**

Our Group Nominating Committee is looking for those interested in making a difference! We will be filling 3 open positions on our Executive Committee during our elections later this year. Once elected to Ex-Comm, the elected members will meet and work together to fill the important positions of Outings Chair, Membership Chair, Conservation Chair and Programs Chair. In addition to our 6 elected, voting members, we welcome any interested members to serve on Ex-Comm to help our group grow. If you are interested, please contact our Nominat-

ing Committee, David Thorne and Joe Whyte. Email them at [dcthorne1@aol.com](mailto:dcthorne1@aol.com), and "Joe Whyte" [whytejoe@msn.com](mailto:whytejoe@msn.com). Or, you can contact our Group Chair, Mary Ann Ruiz at [ruizmaryann@gmail.com](mailto:ruizmaryann@gmail.com) , or call 909-815-9379. Be sure to come to our meeting on September 15<sup>th</sup> for further information about positions open, job descriptions and how to turn your interest into helping make a difference!

Los Serranos Group has an active Outings Program including our traditional Moonlight Hike in the photo, , encouraging hiking and

(Continued on page 12)

# Calendar of Outings, Meetings, and Other Events

## SEPTEMBER/OCTOBER 2009

The outings calendar is available on the Internet at <http://sangorgonio.sierraclub.org>

### CALENDAR SUBMISSIONS

DEADLINE: Items for the November/December 2009 Calendar are due by October 1. FORMAT items similar to those below. Send items electronically if possible. SUBMISSIONS: Except for below, send to [ralphsalisbury@att.net](mailto:ralphsalisbury@att.net) OUTINGS: Send outings write-ups to your group Outings Chair. MEETINGS and other events: Send to [iwfladd@eee.org](mailto:iwfladd@eee.org)

### GENERAL INFORMATION, RULES AND DISCLAIMERS

All Outings Leaders are Chapter Certified Leaders having appropriate Outings Training Courses, First Aid Courses, and experience for the Outings they lead. LEADERS may exclude individuals from participation if they believe they may not be qualified. Non-Sierra Club members may join outings unless otherwise stated in the write-up. All participants agree to abide by the Leader's rules. Participants should CALL THE LEADER AHEAD TO SIGN-UP.

### WHAT TO BRING

Many Outings specify items to be carried by EACH participant. Do not attend Outings without the specified items unless you have first discussed it with the leader. Often the TEN ESSENTIALS are required. They are: 1) map, 2) compass, 3) flashlight, 4) knife, 5) windproof/waterproof matches in waterproof case, 6) fire starter, 7) first aid kit, 8) extra food and water for emergency use only, 9) extra clothing including rainwear, and 10) sun protection including sunscreen/sunglasses/hat.

### ADVENTURE PASS SPECIAL NOTICE

Outings occurring in the San Bernardino, Angeles, Cleveland, or Los Padres National Forests require a Forest Service "Adventure Pass" for each vehicle. These Outings will be preceded by \*\* in the listings that follow. Be sure to contact the leader regarding permits. The permits cost \$30 per year or \$5 per day, however they may not be obtainable the day of your outing. If you arrive at the meeting place without making arrangements with the leader and you don't have a pass or find a ride in a vehicle with a pass, you will not be able to attend the outing. You are expected to share the cost of the daily passes equally with the others in the vehicle. A \$.50 contribution from everyone in the vehicle is reasonable for annual passes (above normal mileage contribution). America The Beautiful Interagency Passes may be used in lieu of the Adventure Pass.

### CARPOOLING POLICY

In the interests of facilitating the logistics of some outings, it is customary that participants make carpooling arrangements. The Sierra Club does not have insurance for carpooling arrangements and assumes no liability for them. Carpooling, ride sharing, or anything similar is strictly a private arrangement among the participants. Participants assume the risks associated with this travel. Drivers should have adequate insurance coverage and their vehicles should have no safety defects. Drivers of carpools agree to not consume any alcoholic beverages. It is customary for riders to share expenses with the driver. Ten cents per mile per person for short trips is suggested while six cents per mile per person over 100 miles is usually reasonable.

### LIABILITY WAIVER

In order to participate on one of the Sierra Club's outings, you will need to sign the following liability waiver.

#### Sign-In Sheet & Acknowledgment of Outing Member Responsibility, Express Assumption of Risk, and Release of Liability

I understand that during my participation in this Sierra Club Outing, I may be exposed to a variety of hazards and risks, foreseen or unforeseen, which are inherent in each Outing and cannot be eliminated without destroying the unique character of the Outing. These inherent risks include, but are not limited to, the dangers of serious personal injury, property damage, and death ("Injuries and Damages") from exposure to the hazards of travel and the Sierra Club has not tried to contradict or minimize my understanding of these risks. I know that Injuries and Damages can occur by natural causes or activities of other persons, animals, trip members, trip leaders and assistants or third parties, either as a result of negligence or because of other reasons. I understand that risks of such Injuries and Damages are involved in adventure travel such as Sierra Club Outings and I appreciate that I may have to exercise extra care for my own person and for others around me in the face of such hazards. I further understand that on this Outing there may not be rescue or medical facilities or expertise necessary to deal with the Injuries and Damages to which I may be exposed.

In consideration for my acceptance as a participant on this Outing, and the services and amenities to be provided by the Sierra Club in connection with the Outing, I confirm my understanding that:

- I have read any rules and conditions applicable to the Outing made available to me; I will pay any costs and fees for the Outing; and I acknowledge my participation is at the discretion of the leader.
- The Outing begins and ends at the location where the Outing officially commences with leader and participants in attendance, as designated by the Sierra Club ("Trailhead"). The Outing does not include carpooling, transportation, or transit to and from the Trailhead, and I am personally responsible for all risks associated with this travel. This does not apply to transportation provided by the Sierra Club after the commencement and before the end of the Outing.
- If I decide to leave early and not to complete the Outing as planned, I assume all risks inherent in my decision to leave and waive all liability against the Sierra Club arising from that decision. Likewise, if the leader has concluded the Outing, and I decide to go forward without the leader, I assume all risks inherent in my decision to go forward and waive all liability against the Sierra Club arising from that decision.
- This Agreement is intended to be as broad and inclusive as is permitted by law. If any provision or any part of any provision of this Agreement is held to be invalid or legally unenforceable for any reason, the remainder of this Agreement shall not be affected thereby and shall remain valid and fully enforceable.
- To the fullest extent allowed by law, I agree to WAIVE, DISCHARGE CLAIMS, AND RELEASE FROM LIABILITY, and to INDEMNIFY AND HOLD HARMLESS the Sierra Club, its officers, directors, employees, agents, and leaders from any and all liability on account of, or in any way resulting from Injuries and Damages, even if caused by negligence of the Sierra Club its officers, directors, employees, agents, and leaders, in any way connected with this Outing. I understand and intend that this assumption of risk and release is binding upon my heirs, executors, administrators and assigns, and includes any minors accompanying me on the Outing.

I have read this document in its entirety and I freely and voluntarily assume all risks of such Injuries and Damages and notwithstanding such risks, I agree to participate in the Outing. Note: If the participant is a minor, the minor's guardian must sign on the minor's behalf.

## RECURRING MONTHLY MEETINGS (LOOK IN CALENDAR FOR DATES)

- (1ST MON) 6:00 PM SB MOUNTAINS GROUP EXCOM MEETING**  
Alpine Conference Room 27236 Blue Jay Mall on Feb 2, Apr 6, Jun 1, Oct 5, Nov 2. Also at Shady Cove Campground on Aug 8, 3 PM and at Keller Hut Dec 5, 3 PM. INFO: DAVE BARRIE, (909) 337-0313. SB MOUNTAINS GROUP
- (1ST TUE) LOS SERRANOS GROUP EXCOM MEETING**  
Odd-numbered months only (Jan, Mar, May, Jul, Sep, & Nov). PLACE: For meeting time and place, call MARY ANN RUIZ 909-815-9379, [ruizmaryann@gmail.com](mailto:ruizmaryann@gmail.com) LOS SERRANOS GROUP
- (1ST TUE) 6:30 PM BIG BEAR GROUP EXCOM MEETING**  
The meeting place rotates. INFO: CHRISTIE WALKER, (909) 866-5006. BIG BEAR GROUP
- (1ST TUE) 7:30 PM SAN GORGONIO CHAPTER MEETING**  
PROGRAM: See front-page notice. COST: \$1 donation requested. PLACE: San Bernardino County Museum, 2024 Orange Tree Lane, Redlands. DIRECTIONS: Exit I-10 at California St. INFO: LADD SEEKINS 909-888-0161 <[iwfladd@eee.org](mailto:iwfladd@eee.org)>. CHAPTER
- (2ND MON) 7:00 PM SB MOUNTAINS GROUP MEETING**  
Monthly program meeting. No meeting in August or December. PLACE: St. Richard's Episcopal Church, 28708 Highway 18, Sky Forest. INFO: DAVE BARRIE, (909) 337-0313. SB MOUNTAINS GRP

**(2ND TUE) 7:00 PM CHAPTER CONSERVATION COMMITTEE MEETING**  
(In July only the meeting will be the 3<sup>rd</sup> Tuesday, July 18.) Monthly meeting. Take part in working on important conservation issues. Please come: we need your help! PLACE: San Gorgonio CHAPTER Office, 4079 Mission Inn Ave., Riverside. INFO: KIM FLOYD, Conservation Chair, [kimfloyd@fastmail.fm](mailto:kimfloyd@fastmail.fm), (760) 249-5385. CHAPTER

**(2ND WED) 7:00 PM MOJAVE GROUP MEETING**  
Monthly meeting except for July and August. PLACE: Sterling Inn, Regency Room, 17738 Francesca, Victorville. (One block north of Bear Valley Rd. on Ridgecrest.) Enter on Ridgecrest side of the building. INFO: CAROL WILEY, (760) 245-8734, [desertlily@verizon.net](mailto:desertlily@verizon.net) MOJAVE GROUP

**(3RD TUE) 6:00 PM SAN JACINTO VALLEY (HEMET) CONS COMMITTEE MEETING**  
Monthly conservation meeting. The public is welcome. LOCATION: Call or email for location and directions. CONTACT: SHAULI ROSEN-RAGER, (951) 767-2203, [gardens@netzon.net](mailto:gardens@netzon.net). SAN JACINTO VALLEY (HEMET) CONSERVATION COMMITTEE

**(3RD TUE) 6:30 PM BIG BEAR GROUP MEETING**  
Monthly meeting. INFO: For current program information, please visit the Group web site [www.sierraclubbigbeargroup.org](http://www.sierraclubbigbeargroup.org). PLACE: Big Bear Discovery Center, 40971 North Shore Dr. (Hwy. 38), Fawnskin. CONTACT: CHRISTIE WALKER, (909) 866-5006. BIG BEAR GROUP

**(3RD TUE) 7:00 PM LOS SERRANOS GROUP MEETING**  
Monthly meeting except August. The public is welcome. Refreshments will be served. PLACE: Educational Building, Upland Presbyterian Church, Euclid Ave. at 11th. INFO: MARY ANN RUIZ, (909) 628-1285. LOS SERRANOS GROUP

**(4TH TUE) 7:00 PM SAN GORGONIO CHAPTER EXCOM MEETING**  
Chapter governance meeting. PLACE: The San Gorgonio Chapter office, 4079 Mission Inn Ave., Riverside. INFO: RICK ESTES 951-314-3328 <[rickestes\\_92595@yahoo.com](mailto:rickestes_92595@yahoo.com)> CHAPTER

**(4TH THU) 7:00 PM SANTA MARGARITA GROUP MEETING**  
Monthly meeting/public is welcome. PLACE: Rancho California Water District Headquarters, 42135 Winchester Rd., Temecula 92589 SANTA MARGARITA GROUP

### WEEKLY REOCCURRING FITNESS ACTIVITIES Please read "LIABILITY WAIVER" preceding these listings

- MON 6:00 PM RIVERSIDE MT. RUBIDOUX ONE HOUR FITNESS WALK**  
MEET: Ninth Street entrance to Mt. Rubidoux. INFO: JUDY SMITH (951) 369-5117. CHAPTER
- MON 7:00 PM APPLE VALLEY CONDITIONING HIKE HIKE**  
Please join me for a 6-mile *fast paced* conditioning walk along the Mojave River. MEET at the Victor Valley Museum on Apple Valley Road. The path along the river bed is graded and hard packed, which makes for nice walking conditions. BRING flashlight, jacket and comfortable walking shoes. This is a repeat hike but sometimes cancels; PLEASE CALL BEFORE HIKE. LEADER: MELODY NICHOLS (760) 963-4430 <[Labelady@msn.com](mailto:Labelady@msn.com)> MOJAVE GROUP
- WED 7:00 PM MOJAVE GROUP CONDITIONING WALK**  
MEET: Victor Valley Museum every Wednesday except second Wednesday of each month. Walks are paced for participants. Enjoy the evening air, river breeze, sunsets, stars & moon on a 3-mile walk around Jess Ranch & along the Mojave River. LEADERS: BILL SPRENG <[bspreng@gte.net](mailto:bspreng@gte.net)> (760) (951) 4520 & JENNY WILDER (760) 220-0730 <[jensoasis@aol.com](mailto:jensoasis@aol.com)>. MOJAVE GROUP

## AUGUST 11 – AUGUST 23

Please read "LIABILITY WAIVER" preceding these listings  
(Also refer to Weekly reoccurring Outings and Activities)

**AUG 11-16 (TUE-SUN) SOUTHERN SIERRA-OLANCHO PEAK BACKPACK**  
Backpack begins at Kennedy Meadows above Owens Valley (not to be confused with Kennedy Meadow near Sonora). Hike in 2 miles from the trailhead to a camp by the Kern River. Continue up the Kern for the next two days to our highest camp at 9300 ft. Day 4 is the hike with day packs through the wildflowers and an optional hike to the top of Olancho Peak at 12,123 ft., then back the 4 miles to the previous night's camp. Next day hike 8 miles to the first night's camp, then 2 miles out the last day. Much of the trip is on the Pacific Crest Trail. LDR: DAVID HARDY (702-875-4549, [hardyhikers@embarqmail.com](mailto:hardyhikers@embarqmail.com)-email preferred). SOUTHERN NEVADA GROUP

**AUG 18 (TUE) 8:30 AM SANTA ANA RIVER TRAIL LOOP HIKE**  
This is a moderate 10-mile loop hike on the Santa Ana River Trail heading west from the parking lot on the north side of Highway 38 where the Santa Ana and North Fork Rivers meet. It is a gradual trail and return by road with only 500 feet or so of elevation gain in lush forest with many sightings of the Santa Ana River. Bring plenty of water, lunch, weather appropriate clothing, sun protection and sturdy boots. Hikers from the Big Bear area will meet at Von's parking lot at 8:30 AM for carpool to the trailhead. Those from the Redlands area should meet us at the trailhead between 9:00 and 9:15 AM. Call Dick banks at 909-866-9232 for more information and to register. BIG BEAR GROUP

**AUG 18 (TUE) 6:00 PM SAN JACINTO VALLEY (HEMET) CONS COMMITTEE MEETING**  
Monthly conservation meeting. The public is welcome. LOCATION: Call or email for location & directions. CONTACT: SHAULI ROSEN-RAGER, (951) 767-2203, <[gardens@netzon.net](mailto:gardens@netzon.net)> SAN JACINTO VALLEY (HEMET) CONSERVATION COMMITTEE

**AUG 18 (TUE) 6:30 PM BIG BEAR GROUP MEETING**  
Monthly meeting. INFO: For current program information, please visit the Group web site [www.sierraclubbigbeargroup.org](http://www.sierraclubbigbeargroup.org). PLACE: Big Bear Discovery Center, 40971 North Shore Dr. (Hwy. 38), Fawnskin. CONTACT: CHRISTIE WALKER, (909) 866-5006. BIG BEAR GROUP

**AUG 22-23 (SAT-SUN) ANCIENT BRISTLECONE PINE FOREST CARCAMP**  
Come with us to the beautiful White Mtns to camp, hike and just relax. On Saturday, we'll hike the Ancient Bristlecone Pine Forest on a moderate 5 mile loop interpretive trail, followed by a picnic lunch and a short optional hike to a nearby old mining cabin. Back at camp we'll enjoy Happy Hour, a potluck feast and a campfire. Sunday pack up and head home. Group size strictly limited. Send \$8 per person, 2 large SASE, H&W phones, email, rideshare info to Reserv/Ldr: Lygeia Gerard, P.O. Box 294726, Phelan, CA 92329, (760) 868-2179. CNRCC DESERT COMMITTEE

**\*\*AUG 23 (SUN) 9:30 AM "BRING THE KIDS" WOODLAND ADVENTURE TRL HIKE**  
This family trail is perfect for children and has information markers to learn about the botany, wildlife, and geology of this area. The is an easy1-1/2 mile round trip, climbing roughly 200 feet in elevation. This hike will be geared toward the kids and family. Bring a camera, good hiking boots for all, plenty of water, snacks, and layered clothing for cool to very warm temperatures. After the hike we can have lunch at McDonalds for a hearty fast food meal. MEET at 9:30 am in the Von's Parking Lot in Big Bear Lake for possible carpooling. DRIVERS will need a Forest Adventure Pass, as we will drive less than a mile to the Woodland Trailhead. For INFO and details contact HIKE LEADER: ROBBIE BOS (909) 866-5006. BIG BEAR GROUP

## AUGUST 24 – AUGUST 30

Please read "LIABILITY WAIVER" preceding these listings  
(Also refer to Weekly reoccurring Outings and Activities)

**\*\*AUG 24 (MON 8:30 AM PCT HOLCOLM RD TOWARD VAN DUSEN HIKE**  
An easy/moderate 4 mile hike with a 200' gain. The view is fabulous this time of the evening. Holcomb Valley lies below as we hike this ridge route. We will also have a beautiful view of Big Bear and Baldwin Lakes surrounded by the San Bernardino Mountains. Adventure Pass required. LEADER: Chris Cook (909) 878-4524. BIG BEAR GROUP

(Continued on page 6)

*(Continued from page 5)*

**AUG 25 (TUE) 7:00 PM SAN GORGONIO CHAPTER EXCOM MEETING**  
Chapter governance meeting. (No December meeting.) PLACE: The San Gorgonio Chapter office, 4079 Mission Inn Ave., Riverside. INFO: RICK ESTES (951) 314-3328 <rickestes\_92595@yahoo.com>.

**AUG 27 (THU) 7:00 PM SANTA MARGARITA GROUP MEETING**  
Monthly meeting/public is welcome. PLACE: Rancho California Water District Headquarters, 42135 Winchester Rd., Temecula 92589.

**\*\*AUG 29 (SAT) 8:00 AM JENKS LAKE ROAD HIKE HIKE**  
Come join other hikers for a 10 to 12 mile hike from Jenks Lake Rd. to Dry Lake in the beautiful San Gorgonio Wilderness area. Bring 3 to 4 qts of water, sturdy boots, and lunch/snacks. Meet at the Von's Supermarket in big Bear at 7:30 Am or at the trailhead on Jenks Lake Rd at 8-8:15 AM. For more info call LEADER: TERRANCE McCORKLE at (760)252-2194 or (760)412-1683 or email at oldhiker-dude@verizon.net

**AUG 29 (SAT) 4:00 PM END OF SUMMER POOL PARTY EVENT**  
Cool off on a hot summer evening with a dip in the pool, and fill up on BBQ featuring Chino corn and whatever you want to bring. 4:00 pm till ? Come and tell us of your summer adventures, bring your pictures, BYOB, BYOB, let's celebrate surviving another summer, and plan our Los Serranos Group focus for the fall. LEADER/HOST- : Mary Ann Ruiz 909-815-9379 or [ruizmaryann@gmail.com](mailto:ruizmaryann@gmail.com) LOS SERRANOS GROUP

### AUGUST 31 – SEPTEMBER 6

Please read "LIABILITY WAIVER" preceding these listings  
(Also refer to Weekly reoccurring Outings and Activities)

**SEP 1 (TUE) LOS SERRANOS GROUP EXCOM MEETING**  
Odd-numbered months only (Jan, Mar, May, Jul, Sep, & Nov). PLACE: For meeting time & place, call Mary Ann Ruiz 909-815-9379, [ruizmaryann@gmail.com](mailto:ruizmaryann@gmail.com) LOS SERRANOS GROUP

**SEP 1 (TUE) 6:30 PM BIG BEAR GROUP EXCOM MEETING**  
The meeting place rotates. INFO: CHRISTIE WALKER, (909) 866-5006. BIG BEAR GROUP

**SEP 1 (TUE) 7:30 PM SAN GORGONIO CHAPTER MEETING**  
PROGRAM: See front-page notice. COST: \$1 donation requested. PLACE: San Bernardino County Museum, 2024 Orange Tree Lane, Redlands. DIRECTIONS: Exit I-10 at California St. INFO: LADD SEEKINS (909) 888-0161 <iwfladd@eee.org>.

**SEP 4 (FRI) 6:00 PM MOONLIGHT HIKE HIKE**  
Come for a 2 to 3 hour evening hike in the foothills to enjoy the "full" moon. (Actual full moon is September 4.) Hikes are moderately paced. Between 4 and 5 miles rt, 400 to 1200 ft elev.. Hike locations will vary. MEET: North parking lot of U.S. Bank, Claremont, at NE corner of Indian Hill & Foothill Blvds. BRING: Jacket, flashlight, water, and wear sturdy shoes/boots. RAIN CANCELS. INFO: Leaders PATTY and DAVID THORNE (909) 981-5813. LOS SERRANOS GROUP

### SEPTEMBER 7 – SEPTEMBER 13

Please read "LIABILITY WAIVER" preceding these listings  
(Also refer to Weekly reoccurring Outings and Activities)

**SEP 8 (TUE) 7:00 PM CHAPTER CONSERVATION COMMITTEE MEETING**  
Monthly meeting or conference call. Take part in working on important conservation issues. Please participate: we need your help! INFO: KIM FLOYD, Conservation Chair, <kimfloyd@fastmail.fm> (760) 249-5385. CHAPTER

**\*\*SEP 9 (WED) 8:30 AM GRAYS PEAK HIKE**  
This is a Peaks of Big Bear hike. Those reaching all five peaks overlooking the Big Bear Valley will be given a patch commemorating the effort Hike is moderate/difficult, 7 miles, 1120 ft. elevation gain. The trailhead is located on the west side of Hwy. 38, 6/10 of a mile west of Fawnskin, across from the Grout Bay picnic area. Adventure pass required. Join us at 8:30 am at the trailhead for fantastic views of big Bear Valley and beyond. BRING: 2-3 quarts of water, snacks, hat, sunscreen, insect repellent, layered clothing and good hiking boots. LEADER: Call Ed Wallace (909) 584-9407. BIG BEAR GROUP

**SEP 9 (WED) 7:00 PM MOJAVE GROUP MEETING**  
Monthly meeting except for July & August. PLACE: Sterling Inn, Regency Room, 17738 Francesca, Victorville. (One block north of Bear Valley Rd. on Ridgecrest.) Enter on Ridgecrest side of the building. INFO: CAROL WILEY, (760) 245-8734, <desertlily1@verizon.net> MOJAVE GROUP

**SEP 12 (SAT) 8:00 AM SAN BERNARDINO PEAK HIKE**  
Come join other hikers for a 7.5 mile ascent of San Bernardino Peak from Angeles Oaks. 15 miles round trip. Bring sturdy hiking boots, 3 to 4 qts of water, Lunch & Snacks. Register early! Limited to 12. Call Terrence McCorkle to register or for more information at (760)252-2194 or (760)412-1683 (cell) or email [oldhikerdude@verizon.net](mailto:oldhikerdude@verizon.net). Meet at the Vons' supermarket in big Bear at 8 a.m. or Angeles Oaks Restaurant. On Hwy 38 at 8:45/9 a.m. MOJAVE GROUP

**\*\*SEP 13 (SUN) 8:30 AM SUGARLOAF MOUNTAIN HIKE**  
A slow paced hike to the Sugarloaf Peak. From Wildhorse Spring we travel up 3 miles to the almost 10,000 foot peak. Gaining some 1200 feet in elevation, we pass the famous "Wallace" grove of juniper trees, and many more spectacular sights. We will enjoy the views from the peak, and then cruise back down the 3 mile trail. This is a Peaks of Big Bear hike. Those reaching all five peaks overlooking the Big Bear Valley will be given a patch commemorating the effort BRING: camera, binoculars, good hiking boots, plenty of water, lunch/snacks, and layered clothing for the morning cool to very warm temperatures. MEET at 8:30 am in the Von's Parking Lot in Big Bear Lake for carpooling. DRIVERS will need a Forest Adventure Pass, as we will carpool up highway 38, up dirt road 2N93, to Wildhorse Spring. For INFO and details, contact HIKE LEADER ROBBIE BOS (909) 866-5006. BIG BEAR GROUP

**\*\*SEP 13 (SUN) 8:00 AM MIDDLE FORK LYTLE CREEK HIKE**  
This hike will be part of the San Gabriel Mountains Forever East Campaign to add wilderness acreage to Cucamonga Wilderness and will traverse the wilderness from the Middle Fork of Lytle Creek to the third stream crossing. We will write postcards to Congressman David Dreier on a break. Cards and mailing will be provided. This will be an uphill hike on the Middle Fork of Lytle Creek Trail to the Third Stream Crossing and to the 30 foot unnamed waterfall off of Lytle Creek. Starts in arid chaparral and progresses upward through belts of big-cone spruce and Jeffrey pine. Wonderful scenery. Moderate. 5.1 miles Round Trip, 1400 ft elev. gain. MEET: Lytle Creek Ranger Station (from Interstate 15 between the 210 and 215 freeways, exit north on Sierra Avenue which immediately becomes Lytle Creek Road – follow Lytle Creek Road 5.5 miles to the ranger station). We will carpool to Middle Fork of Lytle Creek trailhead. Adventure Pass required. BRING: lunch, water, and extra snacks; wear sturdy shoes/boots. RAIN cancels. INFO: LEADER: DEAN SHIMEK, [dtsierra@msn.com](mailto:dtsierra@msn.com), 909-899-2795. LOS SERRANOS GROUP

**\*\*SEP 13 (SUN) 7:00 AM PCT HWY 18 TO COUGAR CREST HIKE**  
This is a moderate hike near Big Bear of about 12 miles on the Pacific Crest Trail. The elevation gain should be about 1200 to 1500 feet Will meet for carpooling at 7AM behind Denny's Rest. I-10 at Alabama St. in Redlands or at the trailhead at 8 AM. Call leader for info. and Reserv. Joe Whyte 909-949-0899. LOS SERRANOS GROUP

### SEPTEMBER 14 – SEPTEMBER 20

Please read "LIABILITY WAIVER" preceding these listings  
(Also refer to Weekly reoccurring Outings and Activities)

**SEP 14 (MON) 7:00 PM SB MOUNTAINS GROUP MEETING**  
Monthly program meeting. No meeting in August or December. PLACE: St. Richard's Episcopal Church, 28708 Highway 18, Sky Forest. INFO: DAVE BARRIE, (909) 337-0313. SB MOUNTAINS GROUP

**SEP 15 (TUE) 6:00 PM SAN JACINTO VALLEY (HEMET) CONS COMMITTEE MEETING**  
Monthly conservation meeting. The public is welcome. LOCATION: Call or email for location & directions. CONTACT: SHAULI ROSEN-RAGER, (951) 767-2203, <gardens@netzon.net> SAN JACINTO VALLEY (HEMET) CONSERVATION COMMITTEE

**SEP 15 (TUE) 6:30 PM BIG BEAR GROUP MEETING**  
Monthly meeting. INFO: For current program information, please visit the Group web site [www.sierraclubbigbeargroup.org](http://www.sierraclubbigbeargroup.org). PLACE: Big Bear Discovery Center, 40971 North Shore Dr. (Hwy. 38), Fawnskin. CONTACT: CHRISTIE WALKER, (909) 866-5006. BIG BEAR GROUP

**SEP 15 (TUE) 7:00 PM LOS SERRANOS GROUP MEETING**  
Join us for a new twist on our September meeting - instead of a pot-luck dinner - a green wine tasting! Earlier this year Sierra Magazine featured wines produced using sustainable practices - many were tasted and winners chosen. We will have information available about sustainably produced wines, appetizers, and for those interested, taste selected wines for a small tasting fee. Meet as usual at 7:00 PM but at the Pacific Wine Merchants in Upland. Near our normal meeting site, at 210 E. A St, just east of Euclid by the Metrolink station north of 7<sup>th</sup> st. Information [ruizmaryann@gmail.com](mailto:ruizmaryann@gmail.com) or 909-815-9379. LOS SERRANOS GROUP

**SEP 19 (SAT) YOUTH IN THE DESERT – VASQUES ROCKS HIKE**  
Please join us for another Youth in the Desert adventure to Vasquez Rocks in Aqua Dulce. This is a 745 acre park full of history and unique geological rock formations. We will hike approx 5 miles or less while we explore a history trail-tour of the Tatavian Indians and Spanish Settlers as well as keep a look out for wildlife and local vegetation. Please dress for weather changes (layers), wear good hiking boots, bring 2 qts of water, lunch & Snacks, sunscreen & hat. For starting time and meeting location please call Melody Nichols (760) 963-4430 or email at [Labelady@msn.com](mailto:Labelady@msn.com). MOJAVE GROUP

**\*\*SEP 19 (SAT) 9 AM S G MTS, MT BADEN POWELL HIKE**  
Join us on this moderate 8 mile (RT), 2800' elevation gain hike up Mt. Baden-Powell, near Wrightwood. On the way we will pass through a forest filled with Oak, Jeffery, Sugar, Cedar, and Limber Pines. This trail is known for its 41 switchbacks. There is a sign-in box at the summit and a Boy Scout monument. BRING lunch, good boots, layered clothing. Adventure Pass REQUIRED. CALL for meeting time and place. LEADER: HEATHER SARGEANT, 909-336-2836. MOUNTAINS GROUP

### SEPTEMBER 21 – SEPTEMBER 27

Please read "LIABILITY WAIVER" preceding these listings  
(Also refer to Weekly reoccurring Outings and Activities)

**SEP 21 (MON) 9:00AM COUGAR CREST TRAIL TO BERTHA PEAK HIKE**  
This is a 6-mile hike, moderate up Cougar Crest Trail and the PCT, followed by a short, but more difficult, ascent to Bertha Peak summit at 8500 ft above sea level. There you will have a 360-degree view of the Bear Valley, Holcomb Valley and Mojave Desert, making the extra effort well worth it. This is a Peaks of Big Bear hike. Those reaching all five peaks overlooking the Big Bear Valley will be given a patch commemorating the effort. BRING: Plenty of water and snacks. We will meet at Vons parking lot in BBL at 9 am. LEADER: Call Ed Wallace (909) 584-9407. BIG BEAR GROUP

**SEP 22 (TUE) 7:00 PM SAN GORGONIO CHAPTER EXCOM MEETING**  
Chapter governance meeting. (No December meeting.) PLACE: The San Gorgonio Chapter office, 4079 Mission Inn Ave., Riverside. INFO: RICK ESTES (951) 314-3328 <rickestes\_92595@yahoo.com>.

**SEP 23 (WED) 8:30 AM WILDHORSE SPRINGS TO SUGARLOAF MTN HIKE**  
Strenuous, 8 miles, 2,000 ft. elevation gain. Great views of San Gorgonio and the Santa Ana River drainage. This is a Peaks of Big Bear hike. Those reaching all five peaks overlooking the Big Bear Valley will be given a patch commemorating the effort Bring water, snacks, layered clothing, and hiking boots. We will meet at the Von's parking lot in Big Bear Lake. LEADER: Call Ed Wallace (909) 584-9407. BIG BEAR GROUP

**SEP 24 (THU) 7:00 PM SANTA MARGARITA GROUP MEETING**  
Monthly meeting/public is welcome. PLACE: Rancho California Water District Headquarters, 42135 Winchester Rd., Temecula 92589. SANTA MARGARITA GROUP

**SEP 25-27 (FRI-SUN) CARRIZO PLAINS SERVICE AND HIKING**  
This is an opportunity to visit and to assist an outstanding and relatively unknown national monument. There will be an optional and scenic hike high in the Caliente Mountains on Friday. Others may join us for National Public Lands Day on Saturday when we will participate with other volunteers working on improvements for the Soda Lake Overlook. On Sunday we will tour a number of the historic, prehistoric, and geologic sites in the Monument. Leader Craig Deutsche, [craig.deutsche@gmail.com](mailto:craig.deutsche@gmail.com), (310-477-6670) CNRCC DESERT COM

**SEP 27 (SUN) 7:00 PM THE CHALLENGE OF HUMAN POPULATION GROWTH MEETING**  
This is a special engagement featuring John Seager, President and Executive Director of Population Connection (formerly Zero Population Growth). See front page for more information. Refreshments served. No reservations required however contact Ladd Seekins at [ladd.g.seekins@gmail.com](mailto:ladd.g.seekins@gmail.com) for more information. PLACE: San Gorgonio Chapter office, 4079 Mission Inn Ave., Riverside (Between Market and Brockton in downtown Riverside). CHAPTER

### SEPTEMBER 28 – OCTOBER 4

Please read "LIABILITY WAIVER" preceding these listings  
(Also refer to Weekly reoccurring Outings and Activities)

**OCT 3 (SAT) 9:00 AM S B MTS, SUGARLOAF MOUNTAIN HIKE**  
This 10 mile roundtrip moderate hike has it all, starting up a forested Green Canyon to a saddle, and then following a ridge trail to the summit at 9,952' , with impressive views of Big Bear valley and the San Gorgonio Wilderness. WEAR: sturdy boots, as the path is rocky in places. BRING lunch and 2 qt water. CALL LEADER, HEATHER SARGEANT, 909-336-2836, for meeting place and information. MOUNTAINS GROUP

**OCT 4 (SUN) 6:00 PM MOONLIGHT HIKE HIKE**  
Come for a 2 to 3 hour evening hike in the foothills to enjoy the "full" moon. (Actual full moon is October 4.) Hikes are moderately paced. Between 4 and 5 miles rt, 400 to 1200 ft elev.. Hike locations will vary. MEET: North parking lot of U.S. Bank, Claremont, at NE corner of Indian Hill & Foothill Blvds. BRING: Jacket, flashlight, water, and wear sturdy shoes/boots. RAIN CANCELS. INFO: Leaders PATTY and DAVID THORNE (909) 981-5813. LOS SERRANOS GROUP

### OCTOBER 5 – OCTOBER 11

Please read "LIABILITY WAIVER" preceding these listings  
(Also refer to Weekly reoccurring Outings and Activities)

**OCT 5 (MON) 6:00 PM SB MOUNTAINS GROUP EXCOM MEETING**  
Alpine Conference Room 27236 Blue Jay Mall on Feb 2, Apr 6, Jun 1, Oct 5, Nov 2, 2009. Also at Shady Cove Campground on Aug 8, 3 PM and at Keller Hut Dec 5, 3 PM. INFO: DAVE BARRIE, (909) 337-0313. SB MOUNTAINS GROUP

**OCT 6 (TUE) 6:30 PM BIG BEAR GROUP EXCOM MEETING**  
The meeting place rotates. INFO: CHRISTIE WALKER, (909) 866-5006. BIG BEAR GROUP

**OCT 6 (TUE) 7:30 PM SAN GORGONIO CHAPTER MEETING**  
PROGRAM: See front-page notice. COST: \$1 donation requested. PLACE: San Bernardino County Museum, 2024 Orange Tree Lane, Redlands. DIRECTIONS: Exit I-10 at California St. INFO: LADD SEEKINS (909) 888-0161 <iwfladd@eee.org>.

**OCT 8 (THU) 5:00 PM HIDDEN SPRINGS HIKE**  
Approximate 3.5 mile loop hike on the Hidden Springs trail and arroyo. Trail has some ups and downs but basically follows the base of the hills and then returns through the arroyo of the housing tract. BRING: water, sturdy shoes MEET: from 60fwy in Moreno Valley go north on Pigeon Pass to left at the light on Hidden Springs Drive. Driveway into Box Springs Park is on the left off Hidden Springs Drive. We will meet in the parking area up the gravel road near the picnic tables. INFO and LEADER: THERESA CARSON (951) 660-7246. MORENO VALLEY GROUP

**OCT 10 (SAT) 8:00 AM PCT FROM 2N01 TO HWY 18 HIKE**  
Come join other hikers for an easy 10 – 12 mile hike along the PCT from 2N01 to Hwy 18. Meet at the Cushingberry Pass near Lake Baldwin on Hwy 18 at 8am. Bring sturdy boots, 3 to 4 qts of water, Lunch & Snacks. For more info contact Terry McCorkle at (760)252-2194 or (760)412-1683 (cell) or email [oldhiker-dude@verizon.net](mailto:oldhiker-dude@verizon.net). MOJAVE GROUP

*(Continued on page 7)*

(Continued from page 6)

**OCT 11 (SUN) 9:00 AM BONITA FALLS HIKE** This hike will be part of the San Gabriel Mountains Forever East Campaign to add wilderness acreage to Cucamonga Wilderness. We will write postcards to Congressman David Dreier on a break. Cards and mailing will be provided. This will be an easy hike to the 90 foot Bonita (Beautiful) Falls. Easy. About 4.5 miles Round Trip, slight elev. gain. MEET: Lytle Creek Ranger Station (from Interstate 15 between the 210 and 215 freeways, exit north on Sierra Avenue which immediately becomes Lytle Creek Road – follow Lytle Creek Road 5.5 miles to the ranger station). We will carpool just around the bend to park across from the green bridge over Lytle Creek. Adventure Pass required. BRING: water and extra snacks; wear sturdy shoes/boots. Rain cancels. INFO: LEADER: DEAN SHIMEK, dtsierra@msn.com, 909-899-2795. LOS SERRANOS GROUP

**OCTOBER 12 – OCTOBER 18**

Please read "LIABILITY WAIVER" preceding these listings (Also refer to Weekly reoccurring Outings and Activities)

**OCT 12 (MON) 7:00 PM SB MOUNTAINS GROUP MEETING** Monthly program meeting. No meeting in August or December. PLACE: St. Richard's Episcopal Church, 28708 Highway 18, Sky Forest. INFO: DAVE BARRIE, (909) 337-0313. SB MOUNTAINS GROUP

**OCT 13 (TUE) 7:00 PM CHAPTER CONSERVATION COMMITTEE MEETING** Monthly meeting or conference call. Take part in working on important conservation issues. Please participate: we need your help! INFO: KIM FLOYD, Conservation Chair, <kimfloyd@fastmail.fm> (760) 249-5385. CHAPTER

**OCT 14 (WED) 7:00 PM MOJAVE GROUP MEETING** Monthly meeting except for July & August. PLACE: Sterling Inn, Regency Room, 17738 Francesca, Victorville. (One block north of Bear Valley Rd. on Ridgecrest.) Enter on Ridgecrest side of the building. INFO: CAROL WILEY, (760) 245-8734, <desertilly1@verizon.net> MOJAVE GROUP

**OCT 18 (SUN) 8:30 AM OLIVE MOUNTAIN HIKE** Enjoy the view from beautiful Olive Mountain with a 3 mile round trip hike. Elevation gain about 1,000 ft. BRING: water, sturdy shoes. MEET: from 60fwy in Moreno Valley go north on Perras to right on Kalmia, left on Kitching. Park at the end of the road on Kitching. INFO and LEADER: THERESA CARSON (951) 660-7246. MORENO VALLEY GROUP

**\*\*OCT 10 (SAT) 8 AM SB MTS, SPLINTERS TO HOLCOMB CREEK HIKE** Hike on the Pacific Crest Trail from Splinters, on Deep Creek, up to Holcomb Camp. We'll have lunch on the creek. This section of the trail is maintained by Mountains Group. Distance: 8 miles RT, elevation gain: 700 feet. BRING: 2 quarts water and lunch. CALL LEADER: BILL ENGS, 909-338-1910. Adventure Pass REQUIRED. MOUNTAINS GROUP

**\*\*OCT 17 (SAT) 8:30 AM SB MTS, SPLINTERS TO DEVIL'S HOLE HIKE** You will hike a scenic section of the Pacific Crest Trail along the Deep Creek Canyon. Distance: 6 miles RT with 600 foot elevation loss and gain. BRING: 10 essentials, 2- qts. water, and snack. WEAR: hiking boots. CALL: LEADER, BILLIE WOLFF, 909-338-2534 for meeting place. Adventure Pass REQUIRED. MOUNTAINS GROUP

**OCTOBER 19 – OCTOBER 25**

Please read "LIABILITY WAIVER" preceding these listings (Also refer to Weekly reoccurring Outings and Activities)

**\*\*OCT 20 (TUE) 8:30 AM DELAMAR MOUNTAIN HIKE** **This is a Peaks of Big Bear hike.** Those reaching all five peaks overlooking the Big Bear Valley will be given a patch commemorating the effort. Moderate 6 to 7-mile round-trip hike on the PCT from Polique Canyon Road to the access trail to Delamar Peak, followed by a moderate to difficult, but short climb to the peak from there. BRING: Water, snacks, boots and clothing appropriate to conditions at the time of the hike. We will meet in Von's parking lot at 8:30 AM. Drivers must display adventure passes. LEADER: Call Ed Wallace (909) 584-9407. BIG BEAR GROUP

**OCT 20 (TUE) 7:00 PM LOS SERRANOS GROUP MEETING** Expedition to the Alaska Range - join us for some amazing photos and video hiking and climbing in Little Switzerland in the Alaska Range. "Flying in on May 18th we were greeted by an amazing scene and were happy to be there. The change from Talkeetna to the Pika Glacier was abrupt: spring conditions and dry ground to the middle of a glacier with snow clad peaks all around. We spent the rest of the day setting up camp." Follow this group on a spectacular spring trip thanks to our speaker, James Pinter-Lucke. Jim is a semi-retired professor of mathematics at Claremont McKenna College who started climbing on Mt Hood in 1961. He has climbed in the American West, Peru, and twice in Alaska. He now prefers to be airlifted into basecamp! PLACE: Educational Building, Upland Presbyterian Church, Euclid Ave at 11th. INFO MARY ANN RUIZ, ruizmaryann@gmail.com 909-815-9379. LOS SERRANOS GROUP

**OCT 20 (TUE) 6:00 PM SAN JACINTO VALLEY (HEMET) CONS COMMITTEE MEETING** Monthly conservation meeting. The public is welcome. LOCATION: Call or email for location & directions. CONTACT: SHAULI ROSEN-RAGER, (951) 767-2203, <gardens@netzon.net> SAN JACINTO VALLEY (HEMET) CONSERVATION COMMITTEE

**OCT 20 (TUE) 6:30 PM BIG BEAR GROUP MEETING** Monthly meeting. INFO: For current program information, please visit the Group web site www.sierraclubbigbeargroup.org. PLACE: Big Bear Discovery Center, 40971 North Shore Dr. (Hwy. 38), Fawnskin. CONTACT: CHRISTIE WALKER, (909) 866-5006. BIG BEAR GROUP

**OCT 22 (THU) 8:30 AM CACTUS FLATS TO SILVER PEAK HIKE** A strenuous 4 to 6 mile hike some of which will be cross country. Good views of the Mojave Desert. BRING: Water layered clothing and hiking boots. We will meet at the Von's parking lot in Big Bear Lake at 8:30 AM. Please call to confirm. LEADER: Ed Wallace 909 584 9407. BIG BEAR GROUP

**OCT 22 (THU) 4:30 PM BOX SPRINGS "M" HIKE** 4 mile round trip hike to the "M" on Box Springs. Trail has some very steep areas. BRING: water, sturdy shoes. MEET: from 60fwy in Moreno Valley go north on Pigeon Pass to left at the light on Hidden Springs Drive. Driveway into Box Springs Park in on the left off Hidden Springs Drive. Drive up the gravel road and park near the picnic tables. INFO and LEADER: THERESA CARSON (951) 660-7246. MORENO VALLEY GROUP

**OCT 22 (THU) 7:00 PM SANTA MARGARITA GROUP MEETING** Monthly meeting/public is welcome. PLACE: Rancho California Water District Headquarters, 42135 Winchester Rd., Temecula 92589. SANTA MARGARITA GROUP

**OCT 24 (SAT) YOUTH IN THE DESERT – PISGAH LAVE TUBES HIKE** Parents/Grandparents are invited to join the fun of an underground adventure exploring the Pisgah Lava Tubes –the longest being 1100' long. Approximately 3 miles round trip hike over extremely rough terrain with about 100' elevation. Bring day pack, lunch, water, 10 essentials, long sleeved shirt, long pants, hat, sturdy boots, gloves and flash light. For meeting time and place contact Co-leader Melody Nichols (760) 963-4430 email [Labelady@msn.com](mailto:Labelady@msn.com), or Leader Bill Spreng (760)951-4520 email: [bspreng@verizon.net](mailto:bspreng@verizon.net). MOJAVE GROUP

**OCT 24 (SAT) EAGLE CLIFF MINE – JOSHUA TREE NP HIKE** The last couple of years our October hikes have been just too hot for people who are not acclimated to the desert. We're still going to try an October hike but much shorter and more user friendly for whatever kind of weather this date turns out to offer. Eagle Cliff Mine is an interesting loop hike in a very pretty area of the park that offers some shade from both trees and canyon walls. The mine is complete with a cabin of sorts and other various points of interest, some historic and some a part of nature, as well as an excellent overview. Bring a couple of quarts of water, decent boots, a snack and a lunch. A variety of clothes options in your car to choose from has proven to be worthwhile. Call Ann and Al Murdy (760-366-2932 we don't return calls) or email ([al.murdy@gmail.com](mailto:al.murdy@gmail.com)) TAHQUITZ GROUP

**OCT 25 (SUN) 7:30 AM WHITEWATER PRESERVE TO MISSION CREEK HIKE** Come check out what the Wildlands Conservancy has done with this former trout farm, and see some of the "sand to snow" lands they have preserved. We will meet in Ontario, at 7:30am or later for those that would like to meet at the Preserve. We will hike up the wash, join the PCT for a few miles, then head up to the conservancy's Mission Creek preserve. This is a 13.2 mile round trip, elevation gain about 1000 feet. Some cross country, rocky wash hiking so wear hiking boots, 3 litres water, lunch and snacks. Layered clothing depending on the weather. Meet: Contact- leader for meeting place RAIN CANCELS ruizmaryann@gmail.com 909-815-9379. LOS SERRANOS GROUP

**OCTOBER 26 – OCTOBER 31**

Please read "LIABILITY WAIVER" preceding these listings (Also refer to Weekly reoccurring Outings and Activities)

**\*\*OCT 27 (TUE) 8:30 AM GOLD MOUNTAIN HIKE** This is a Peaks of Big Bear hike. Those reaching all five peaks overlooking the Big Bear Valley will be given a patch commemorating the effort. Moderate 8-mile hike to the peak of Gold Mountain and return, with a 1000 – 1200-foot altitude gain. We will utilize the Pacific Crest Trail and 4 wheel jeep trails to access the peak. We will loop back to the starting point using the Holcomb Valley Road passing the Lucky Baldwin mine on our return. BRING: 2 quarts of water, snacks, and sturdy hiking boots, layered clothing and protection from the sun. LEADER: Ed Wallace 909-584-9407. MEET: Von's Parking lot at 8:30 AM. Adventure passes may be required for drivers. BIG BEAR GROUP

**OCT 27 (TUE) 7:00 PM SAN GORGONIO CHAPTER EXCOM MEETING** Chapter governance meeting. (No December meeting.) PLACE: The San Gorgonio Chapter office, 4079 Mission Inn Ave., Riverside. INFO: RICK ESTES (951) 314-3328 <rickestes\_92595@yahoo.com>. CHAPTER

**OCT 29 (THU) 8:00 AM SANTA ANA RIVER TO MORTON PEAK HIKE** This 12-mile round trip hike has a 2800 ft elevation gain. Great views of the Santa Ana River drainage. BRING: Water layered clothing and hiking boots. MEET: Von's parking lot in Big Bear Lake at 8:00 AM and Mill Creek Ranger Station at 9:00. Please call to confirm. LEADER: Ed Wallace 909 584 9407. BIG BEAR GROUP

**\*\*OCT 31 (SAT) 9:30 AM RED ANT CANYON HALLOWEEN WALKABOUT HIKE** A great day for a local walkabout type hike. Roughly a 4 mile round trip, 600 foot elevation gain, easy to moderate cruise to move your leg muscles and get ready for the Halloween candy dash later this evening. Could be a cold day, so be prepared for cold to mild temperatures. Layered clothing is always best. BRING: Good hiking boots, plenty of water, snacks/lunch, and layered clothing for cold to possibly warm temperatures. MEET at 9:30 am at the Aspen Glen Picnic Area Parking Lot, off Mill Creek Road, in Big Bear Lake. You will need a Forest Adventure Pass to park here. For INFO and details, contact LEADER: ROBBIE BOS (909) 866-5006. BIG BEAR GROUP

**FUTURE SIERRA CLUB ACTIVITIES**

Please read "LIABILITY WAIVER" preceding these listings

**OCT 3-4 (SAT-SUN) CARRIZO PLAIN ANTELOPE PROTECTION WORK PARTY** Come help remove fences to allow the beautiful and endangered pronghorn antelope unobstructed access to all areas of the Plain. We have already succeeded in cleaning up the American Ranch area! Join us as we now work on the Panorama Ranch. Car Camp at Selby campground; Bring food, water, heavy leather work gloves, and camping gear for the weekend. Potluck Sat night. Meet at the Goodwin Visitors' Center at 9:00 am Sat. Rain cancels. Resource specialist: Alice Koch. For more information, contact Leaders: Cal and Letty French, 14140 Chimney Rock Road, Paso Robles, CA 93446, (805-239-7338). Prefer e-mail [lettyfrench@gmail.com](mailto:lettyfrench@gmail.com) Santa Lucia Chap/CNRCC DESERT COMMITTEE

**OCT 5-6 (MON-TUE) WILDERNESS RESTORATION DEATH VALLEY NP WORK PARTY** The currently planned project is to finish the conversion to a trail of the northern end of the old Mesquite Flats/Death Valley crossover road which used to join the Scotty's Castle road in the vicinity of Red Wall Canyon. Meet Sunday evening or early Monday morning, work Monday and Tuesday. Potluck Monday night. On Wednesday there will be a ranger lead hike for those who can stay over. (Project may change). For more information, or to sign up, contact leader: Kate Allen 661-494-4056 [ki.allen@wildblue.net](mailto:ki.allen@wildblue.net) (email preferred). CNRCC DESERT COMMITTEE

**OCT 17-18 (SAT – SUN) EXPLORING THE SODA MOUNTAINS CAR CAMP/HIKE** We will explore the ridges and deep washes of this relatively unknown and rugged Wilderness Study Area (WSA), located east of Barstow and north of I-15 in the Mojave Desert. Arrive late Saturday afternoon at the camping area in the open flats near the Cronese Lakes. Potluck Saturday night. The full day hike on Sunday will help us appreciate a unique place and to comment upon the future of this WSA which is currently uncertain. Hike is moderately difficult. For details contact leader: Craig Deutsche, (310-477-6670), [craig.deutsche@gmail.com](mailto:craig.deutsche@gmail.com). CNRCC DESERT COMMITTEE

**NOV 1 (SUN) 6:00 PM MOONLIGHT HIKE HIKE** Come for a 2 to 3 hour evening hike in the foothills to enjoy the "full" moon. (Actual full moon is November 2.) Hikes are moderately paced. Between 4 and 5 miles rt, 400 to 1200 ft elev.. Hike locations will vary. MEET: North parking lot of U.S. Bank, Claremont, at NE corner of Indian Hill & Foothill Blvds. BRING: Jacket, flashlight, water, and wear sturdy shoes/boots. RAIN CANCELS. INFO: Leaders PATTY and DAVID THORNE (909) 981-5813. LOS SERRANOS GROUP

**NOV 6-8 (FRI-SUN) MOJAVE NATIONAL PRESERVE SERVICE TRIP** Help the Mojave National Preserve clean up a large illegal dump that has built up over the years. Work all day Saturday and until noon on Sunday. A barbecue will be provided by Preserve staff Saturday evening. A hike is planned for those arriving in the morning on Friday. There will be a Ranger talk about the Preserve on Friday. Camping will be rustic, but a portable restroom will be provided. High clearance vehicle is recommended to access the site, but we can shuttle people and gear if needed. Email or call leader for reservation information. Leader: Rich Jurcich, [rich.sac@pacbell.net](mailto:rich.sac@pacbell.net), 916-492-2181. CNRCC DESERT COMMITTEE

**NOV 7-8 (SAT & SUN) DEATH VALLEY "BOWLING ALLEY" CAR CAMP/HIKE** This narrow strip of land between Death Valley National Park and Fort Irwin is lovingly referred to as the "Bowling Alley" and is an ideal wilderness candidate. With unique and beautiful geology, several perennial springs, and habitat for desert tortoise and bighorn sheep, we'll have lots to explore! We'll drive in on some rough routes and then day hike from our car/tent camp site. Potluck dinner Saturday night. Leader: Carol Wiley (760)245-8734, [desertilly1@verizon.net](mailto:desertilly1@verizon.net). Reservationist: Kate Allen [ki.allen@wildblue.net](mailto:ki.allen@wildblue.net) (661)944-4056. CNRCC DESERT COMMITTEE

**Thank you for Remembering**  
Your financial contribution means a lot to us. By supporting this chapter, you support the Sierra Club's work in your back yard. This makes you an important part of our work to protect wilderness and wildlife, to improve the quality of life in our cities, and to promote the enjoyment of nature.

**Other Outings & Outdoor Classes**  
In addition to the Natural History Classes and Outdoor Field Study Classes listed elsewhere in the Palm and Pine under The Desert Institute, UCR Extension and Rancho Santa Ana, you can find additional outings and classes at [www.desertreport.org](http://www.desertreport.org)

(Continued from page 7)

### NON-SIERRA CLUB ACTIVITIES

The following activities, meetings and events are not sponsored nor administered by the Sierra Club. The Sierra Club has no information about the planning of these activities and makes no representations or warranties about the quality, safety, supervision or management of such activities. They are published only as a reader service because they may be of interest to the readers of this publication.

### NON-SIERRA CLUB RECURRING WEEKLY & MONTHLY MEETINGS

(LOOK IN CALENDAR FOR DATES)

**(1ST FRI) 8:00 PM INTERNATIONAL FOLK DANCE FOLK DANCE**  
**NON-SIERRA CLUB EVENT UC RIVERSIDE FOLK DANCE CLUB**  
 Join us for international folk dancing. This is the same group that used to meet at UCR. Meetings are twice monthly: on the 1st & 3rd Fridays. COST: \$2 donation to help pay for the room. PLACE: Highgrove United Methodist Church, 938 W. Center St., Highgrove. DIRECTIONS: Take the Center St. exit from Interstate 215. The church is one half mile east of the freeway on the right. INFO: GAIL SEEKINS (909) 825-4427 <lgseekins@sbcglobal.net>

**(1ST SUN) 3:30 PM RIVERSIDE CONTRA DANCE DANCE**  
**NON-SIERRA CLUB EVENT RIVERSIDE CONTRA DANCE**  
 (Note: There is no September meeting because of the Labor Day holiday.) Join us in for an afternoon of contra dance to live music. Dance Instruction at 3:30. Dance from 4:00 to 7:00. Refreshment will be served at the break. Potluck at 7:00, so bring a dish to share. COST: \$9 general admission, \$7.00 students with ID. PLACE: Please call to verify the location. At this writing, the dance is still being held at All Saints Episcopal Church, which may be closed for renovation at any time. We don't know from month to month when the church hall remodeling will start. All Saints Episcopal Church, 3847 Terracina Dr., Riverside. DIRECTIONS: The church is on the corner of Terracina & Magnolia between 14th St. & Central Ave. From the 91 freeway, exit on 14th St., go north to Magnolia & turn left. The church will be on your right. Alternatively, exit at Central Ave., go north to Magnolia & turn right. The church will be on your left. ALTERNATE DANCE VENUE: While the church is being remodeled, we will meet at the Ballet Arts Studio in downtown Riverside. CALLER/BAND COORDINATOR: PATTY MCCOLLOM (714) 267-4567 or <mccollom@sbcglobal.net> INFO: SANDY GOSSELIN <SGOSSELIN@riversideca.gov> Riverside Contra Dance Website: <http://bees.ucr.edu/riversidedance/cdclink.html>

**(3RD TUE) 6:30 PM SAVE OUR SKYLINE: BOX SPRINGS THRU THE BADLANDS OPEN SPACE MEETING**  
**NON-SIERRA CLUB EVENT SAVE OUR SKYLINE: BOX SPRINGS THRU THE BADLANDS**  
 Help us preserve Moreno Valley's northern skyline & secure a natural open-space corridor between the Box Springs Mountains & the Badlands, including the upper basin of Reche Canyon. We meet at the Coffee Grinder, 23580 Sunnymead Blvd., Moreno Valley. INFO: DAN CLARK, (951) 924-2454 <saveourskyline@roadrunner.com>

**(3RD WED) 7:30 PM AUDUBON SOCIETY MEETING**  
**NON-SIERRA CLUB EVENT SAN BERNARDINO VALLEY AUDUBON SOCIETY**  
 PROGRAM: A guest speaker presents an illustrated program on wildlife or natural science. Note that the December meeting will be a potluck holiday dinner starting at 6:30 PM. Come early to browse the gift tables & socialize. LOCATION: San Bernardino County Museum, 2024 Orange Tree Lane, Redlands. DIRECTIONS: Exit I 10 at California St. INFO: DORI MEYERS, (714) 779-2201.

**(3RD FRI) 8:00 PM INTERNATIONAL FOLK DANCE FOLK DANCE**  
**NON-SIERRA CLUB EVENT UC RIVERSIDE FOLK DANCE CLUB**  
 (No dance on July 17. See the write below up for an alternate activity.) Join us for international folk dancing. This is the same group that used to meet at UCR. Meetings are twice monthly: on the 1st & 3rd Fridays. COST: \$2 donation to help pay for the room. PLACE: Highgrove United Methodist Church, 938 W. Center St., Highgrove. DIRECTIONS: Take the Center St. exit from Interstate 215. The church is one half mile east of the freeway on the right. INFO: GAIL SEEKINS (909) 825-4427 <lgseekins@sbcglobal.net>

### NON-SIERRA CLUB ACTIVITIES CALENDAR

**AUG 17 (TUE) 6:30 PM SAVE OUR SKYLINE: BOX SPRINGS THRU THE BADLANDS OPEN SPACE MEETING**  
**NON-SIERRA CLUB EVENT SAVE OUR SKYLINE: BOX SPRINGS THRU THE BADLANDS**  
 Help us preserve Moreno Valley's northern skyline & secure a natural open-space corridor between the Box Springs Mountains & the Badlands, including the upper basin of Reche Canyon. We meet at the Coffee Grinder, 23580 Sunnymead Blvd., Moreno Valley. INFO: DAN CLARK, (951) 924-2454 <saveourskyline@roadrunner.com>

**AUG 19 (WED) 7:30 PM AUDUBON SOCIETY MEETING**  
**NON-SIERRA CLUB EVENT SAN BERNARDINO VALLEY AUDUBON SOCIETY**  
 PROGRAM: A guest speaker presents an illustrated program on wildlife or natural science. Note that the December meeting will be a potluck holiday dinner starting at 6:30 PM. Come early to browse the gift tables & socialize. LOCATION: San Bernardino County Museum, 2024 Orange Tree Lane, Redlands. DIRECTIONS: Exit I 10 at California St. INFO: DORI MEYERS, (714) 779-2201.

**AUG 21 (FRI) 8:00 PM INTERNATIONAL FOLK DANCE FOLK DANCE**  
**NON-SIERRA CLUB EVENT UC RIVERSIDE FOLK DANCE CLUB**  
 No dance this Friday. We will all be at the Redlands Bowl watching the Brazilian folk dancers. Please join us there. INFO: GAIL SEEKINS (909) 825-4427 <lgseekins@sbcglobal.net>

**SEP 4 (FRI) 8:00 PM INTERNATIONAL FOLK DANCE FOLK DANCE**  
**NON-SIERRA CLUB EVENT UC RIVERSIDE FOLK DANCE CLUB**  
 Join us for international folk dancing. This is the same group that used to meet at UCR. Meetings are twice monthly: on the 1st & 3rd Fridays. COST: \$2 donation to help pay for the room. PLACE: Highgrove United Methodist Church, 938 W. Center St., Highgrove. DIRECTIONS: Take the Center St. exit from Interstate 215. The church is one half mile east of the freeway on the right. INFO: GAIL SEEKINS (909) 825-4427 <lgseekins@sbcglobal.net>

**SEP 5 (SAT) EVENING WALK – JUNIPER FLATS AREA WALK**  
**NON-SIERRA CLUB EVENT FRIENDS OF JUNIPER FLATS**  
 Come and join us for an exciting 3 mile walk to the Boulder Garden in the Juniper Flats Area. This is a 3 mile walk along quiet dirt trails with only a slight elevation gain. There are exceptional views along the way and the hike will end in a beautiful Boulder Garden in the Juniper Flats Area of Critical Environmental Concern (ACEC). Learn more about why this area is so special. Trail head is about 5 miles along a county maintained dirt road (Bowen Ranch Road). We will meet at the Victor Valley Museum on Apple Valley Road at 6pm. The sun sets at about 7 pm and the moon rises at about 7:30 pm (99% visible). We will be hiking by moon light. Summer brings the snakes out in the desert so please wear long pants and bring a hiking stick as well as layered clothing, water and snacks. For more information contact Ann at 760 713 1298 or Jenny at [JensOasis@aol.com](mailto:JensOasis@aol.com) or 760 220 0730.

**SEP 12 (SAT) DEEP CREEK DAY HIKE**  
**NON-SIERRA CLUB EVENT CALIFORNIA WILDERNESS COALITION**  
 Deep Creek flows out of the San Bernardino National Forest and into the great Mojave River, providing important habitat for a variety of wildlife like bobcats, bears, bighorn sheep and the endangered Southwestern Arroyo Toad. Join us for a moderate 7.5 mile round trip hike along the proposed wild and scenic section of the river. We'll be following the famous Pacific Crest Trail and will likely get our feet wet and cool off in the river! For details, contact Marisa [mlcalderon@msn.com](mailto:mlcalderon@msn.com).

**SEP 15 (TUE) 6:30 PM SAVE OUR SKYLINE: BOX SPRINGS THRU THE BADLANDS OPEN SPACE MEETING**  
**NON-SIERRA CLUB EVENT SAVE OUR SKYLINE: BOX SPRINGS THRU THE BADLANDS**  
 Help us preserve Moreno Valley's northern skyline & secure a natural open-space corridor between the Box Springs Mountains & the Badlands, including the upper basin of Reche Canyon. We meet at the Coffee Grinder, 23580 Sunnymead Blvd., Moreno Valley. INFO: DAN CLARK, (951) 924-2454 <saveourskyline@roadrunner.com>

**SEP 16 (WED) 7:30 PM AUDUBON SOCIETY MEETING**  
**NON-SIERRA CLUB EVENT SAN BERNARDINO VALLEY AUDUBON SOCIETY**  
 PROGRAM: A guest speaker presents an illustrated program on wildlife or natural science. Note that the December meeting will be a potluck holiday dinner starting at 6:30 PM. Come early to browse the gift tables & socialize. LOCATION: San Bernardino County Museum, 2024 Orange Tree Lane, Redlands. DIRECTIONS: Exit I 10 at California St. INFO: DORI MEYERS, (714) 779-2201.

**SEP 18 (FRI) 8:00 PM INTERNATIONAL FOLK DANCE FOLK DANCE**  
**NON-SIERRA CLUB EVENT UC RIVERSIDE FOLK DANCE CLUB**  
 No dance this Friday. We will all be at the Redlands Bowl watching the Brazilian folk dancers. Please join us there. INFO: GAIL SEEKINS (909) 825-4427 <lgseekins@sbcglobal.net>

**SEP 18-24 (FRI-THU) NORTH FORK ANGELES NF WORK PARTY**  
**NON-SIERRA CLUB EVENT PACIFIC CREST TRAIL ASSOCIATION**  
 Join the NWSA Americorp crew at the Northfork Station to build three rock retaining walls which will stabilize the tread, trail south. The crew will also put in several drainage features and do some minor tread repair. The NWSA Americorp crew will be camped at Little Jimmy CG and working trail south on the PCT. They will be repairing the tread and brushing. Bring car/tent camping gear, heavy gloves, eye protection, sun protection (hats and sunscreen), brush protection (long sleeves and long pants), sturdy boots, warm clothes, rain gear, daypack, flashlight and water bottles. There is moderate to strenuous physical activity cutting brush with saws and loppers, pulling and disposing of cut brush out of sight, grubbing out root balls with a Pulaski, shaping tread with a McLeod, re-building rock walls, ore repairing water bars. The PCT Association will provide full orientation, instruction, supervision and, water, tools, hard hats, and food. Contact Suzanne Wilson (951-492-9836) or Jennifer Tripp (916-349-2109 x17) for more information.

**SEP 19 (SAT) INDIAN PASS DAY HIKE**  
**NON-SIERRA CLUB EVENT CALIFORNIA WILDERNESS COALITION**  
 This area of the Sonoran desert has long been important to the Quechan tribe and is a truly magnificent area of rugged peaks and desert washes along the Colorado River. We'll hike about 4 miles round trip and cross country through the largest Sonoran woodland in North America. Our hike will allow us to get views of the Palo Verde Mountains, the Trigo Mountains, and the river. For details, contact Laurel 909-260-8833 [williams@calwild.org](mailto:williams@calwild.org).

(Continued on page 9)

# Chapter Executive Committee

|  |   |   |  |
|--|---|---|--|
| <b>San Gorgonio Chapter Website</b><br><a href="http://sangorgonio.sierraclub.org">http://sangorgonio.sierraclub.org</a> | <b>CNRCC Delegates</b><br>*George Hague 909-924-0816<br>Sid Silliman 909-946-5027<br>gssilliman@csupomona.edu | <b>Chapter Conservation Issue Chairs</b>  | <b>Los Serranos Group</b><br>Chair—Mary Ann Ruiz 909-815-9379<br>ruizmaryann@gmail.com<br>Meets 3rd Tuesday Upland Presbyterian Church, Ed Building 7 p.m.   |
| <b>San Gorgonio Chapter Excom</b>  | <b>Group Representatives To Excom</b>   | <b>Desert Issues — High Desert</b><br>Kim Floyd 760-680-9479<br>Kimfloyd@fastmail.fm  | <b>Mojave Group</b><br>Chair—Jenny Wilder 760-220-0730<br>jensoasis@aol.com<br>Meets 2nd Wednesday except Jul. & Aug. Sterling Inn, Regency Room, 17738 Francesca, Victorville 7 p.m. (just north of Bear Valley and Ridgecrest) (also contact earthlingwiley@aol.com) |
| <b>Chair</b><br>*Rick Estes 951-314-3328<br>rickestes_92595@yahoo.com  | <b>Big Bear Group</b><br>*Christie Walker 909-866-5006<br>Christie.mountaincreative@verizon.net               | <b>Desert Issues — Low Desert</b><br>Joan Taylor  | <b>Moreno Valley Group</b><br>Chair—Michael Millsbaugh 951-653-2068  |
| <b>Vice-Chair</b><br>Open  | <b>Los Serranos Group</b><br>*Mary Ann Ruiz 909-815-9379<br>ruizmaryann@gmail.com                             | <b>Desert — Eagle Mountain</b><br>Donna Charpied 760-392-4722<br>laronna@earthlink.net  | <b>Mountains Group</b><br>Chair—Dave Barrie 909-337-0313<br>barriemail@mac.com<br>Meets 2nd Monday 7:00 p.m. Except Aug & Dec. St Richard's Episcopal Church, 28708 Hwy 18, Sky Forest   |
| <b>Secretary</b><br>Kim Floyd<br>760-680-9479  | <b>Mojave Group</b><br>*Estelle Delgado 760-241-7327<br>estelledelgado@verizon.net                            | <b>Forestry Issues — Mountaintop RD</b><br>East—Ed Wallace 909-584-9407<br>West—Steve Farrell 661-449-2867<br>mr_sqf@yahoo.com                              | <b>Tahquitz Group</b><br>Chair—Jeff Morgan 760-324-8696  |
| <b>Treasurer</b><br>*Ladd Seekins 909-825-4427<br>lgseekins@sbcglobal.net  | <b>Moreno Valley</b><br>*George Hague 951-924-0816  | <b>Forestry Issues San Jacinto RD</b><br>Holly Owen 951-303-7922<br>Joyce Burk 760-252-3820   | <b>Santa Margarita Group</b><br>Chair—Jim Mitchell 951-506-9607<br>sierraclubsmg@gmail.com<br>Meets 4th Thu, 7 PM at Rancho California Water District Headquarters, 42135 Winchester Rd, Temecula 92589  |
| <b>Conservation Chair</b><br>*Kim Floyd 760-680-9479<br>kimfloyd@fastmail.fm   | <b>San Bernardino Mtns. Group</b><br>*Dave Barrie 909-337-0313<br>barriemail@mac.com                          | <b>Forestry Issues Cleveland NF</b><br>Gene Frick 951-689-2283<br>gfrick@cosmoaccess.net  | <b>Water Issues</b><br>Steve Farrell 661-449-2867  |
| <b>Litigation Chair</b><br>*Joan Taylor  | <b>Tahquitz Group</b><br>*Jeff Morgan 760-324-8696  | <b>California Wild Heritage Campaign</b><br>Joyce Burk 760-252-3820   | <b>Group Directory</b>   |
| <b>Membership Chair</b><br>*Bill Cunningham  | <b>Santa Margarita Group</b><br>*Jim Mitchell 951-506-9607<br>sierraclubsmg@gmail.com                         | <b>Big Bear Group</b><br>Chair—Christie Walker 909-866-5006<br>Meets 3rd Tuesday, Discovery Center North Shore, 6:30 p.m.<br>www.sierraclubbigbeargroup.org |  |
| <b>Outings Chair</b><br>*Ralph Salisbury 951-686-4141<br>ralphsalisbury@att.net  | <b>Wilderness Skills/Leadership Training</b><br>ralphsalisbury@att.net  |   |  |
| <b>SC Council Delegate</b><br>*Steve Farrell 661-449-2867<br>mr_sqf@yahoo.com  |   |   |  |



(Continued from page 8)

**SEP 29-OCT 7 (TUE-WED)**

**NON-SIERRA CLUB EVENT**

The NWSA Americorp crew will head into Mission Springs from the Stone House with packer support, about 5 miles into the backcountry. The crew will hike about 1 mile to work each day. They will be constructing rock retaining walls and drainages to repair flood damage from Oct 2008. Bring car/tent camping gear, heavy gloves, eye protection, sun protection (hats and sunscreen), brush protection (long sleeves and long pants), sturdy boots, warm clothes, rain gear, daypack, flashlight and water bottles. There is moderate to strenuous physical activity cutting brush with saws and loppers, pulling and disposing of cut brush out of sight, grubbing out root balls with a Pulaski, shaping tread with a McLeod, re-building rock walls, ore repairing water bars. The PCT Association will provide full orientation, instruction, supervision and, water, tools, hard hats, and food. Contact Suzanne Wilson (951-492-9836) or Jennifer Tripp (916-349-2109 x17) for more information.

**MISSION CREEK WORK PARTY**

**PACIFIC CREST TRAIL ASSOCIATION**

The NWSA Americorp crew will head into Mission Springs from the Stone House with packer support, about 5 miles into the backcountry. The crew will hike about 1 mile to work each day. They will be constructing rock retaining walls and drainages to repair flood damage from Oct 2008. Bring car/tent camping gear, heavy gloves, eye protection, sun protection (hats and sunscreen), brush protection (long sleeves and long pants), sturdy boots, warm clothes, rain gear, daypack, flashlight and water bottles. There is moderate to strenuous physical activity cutting brush with saws and loppers, pulling and disposing of cut brush out of sight, grubbing out root balls with a Pulaski, shaping tread with a McLeod, re-building rock walls, ore repairing water bars. The PCT Association will provide full orientation, instruction, supervision and, water, tools, hard hats, and food. Contact Suzanne Wilson (951-492-9836) or Jennifer Tripp (916-349-2109 x17) for more information.

**OCT 2 (FRI) 8:00 PM**

**NON-SIERRA CLUB EVENT**

Join us for international folk dancing. This is the same group that used to meet at UCR. Meetings are twice monthly: on the 1st & 3rd Fridays. COST: \$2 donation to help pay for the room. PLACE: Highgrove United Methodist Church, 938 W. Center St., Highgrove. DIRECTIONS: Take the Center St. exit from Interstate 215. The church is one half mile east of the freeway on the right. INFO: GAIL SEEKINS (909) 825-4427 <lgseekins@sbcglobal.net>

**INTERNATIONAL FOLK DANCE**

**FOLK DANCE**

**UC RIVERSIDE FOLK DANCE CLUB**

Join us for international folk dancing. This is the same group that used to meet at UCR. Meetings are twice monthly: on the 1st & 3rd Fridays. COST: \$2 donation to help pay for the room. PLACE: Highgrove United Methodist Church, 938 W. Center St., Highgrove. DIRECTIONS: Take the Center St. exit from Interstate 215. The church is one half mile east of the freeway on the right. INFO: GAIL SEEKINS (909) 825-4427 <lgseekins@sbcglobal.net>

**OCT 4 (SUN) 3:30 PM**

**NON-SIERRA CLUB EVENT**

Caller: Chris Page from San Diego. Band: Dogwood (Michele Nosco, Marie Bruno, Emil Olguin, Ned Boyer). Join us in for an afternoon of contra dance to live music. Dance Instruction at 3:30. Dance from 4:00 to 7:00. Refreshment will be served at the break. Potluck at 7:00, so bring a dish to share. COST: \$9 general admission, \$7.00 students with ID. PLACE: Please call to verify the location. At this writing, the dance is still being held at All Saints Episcopal Church, which may be closed for renovation at any time. We don't know from month to month when the church hall remodeling will start. All Saints Episcopal Church, 3847 Terracina Dr., Riverside. DIRECTIONS: The church is on the corner of Terracina & Magnolia between 14th St. & Central Ave. From the 91 freeway, exit on 14th St., go north to Magnolia & turn left. The church will be on your right. Alternatively, exit at Central Ave., go north to Magnolia & turn right. The church will be on your left. ALTERNATE DANCE VENUE: While the church is being remodeled, we will meet at the Ballet Arts Studio in downtown Riverside. CALLER/BAND COORDINATOR: PATTY MCCOLLOM (714) 267-4567 or <mccollom@sbcglobal.net> INFO: SANDY GOSSELIN <SGOSSELIN@riversideca.gov> Riverside Contra Dance Website: <http://bees.ucr.edu/riversidedance/cdclink.html>

**RIVERSIDE CONTRA DANCE**

**DANCE**

**RIVERSIDE CONTRA DANCE**

Caller: Chris Page from San Diego. Band: Dogwood (Michele Nosco, Marie Bruno, Emil Olguin, Ned Boyer). Join us in for an afternoon of contra dance to live music. Dance Instruction at 3:30. Dance from 4:00 to 7:00. Refreshment will be served at the break. Potluck at 7:00, so bring a dish to share. COST: \$9 general admission, \$7.00 students with ID. PLACE: Please call to verify the location. At this writing, the dance is still being held at All Saints Episcopal Church, which may be closed for renovation at any time. We don't know from month to month when the church hall remodeling will start. All Saints Episcopal Church, 3847 Terracina Dr., Riverside. DIRECTIONS: The church is on the corner of Terracina & Magnolia between 14th St. & Central Ave. From the 91 freeway, exit on 14th St., go north to Magnolia & turn left. The church will be on your right. Alternatively, exit at Central Ave., go north to Magnolia & turn right. The church will be on your left. ALTERNATE DANCE VENUE: While the church is being remodeled, we will meet at the Ballet Arts Studio in downtown Riverside. CALLER/BAND COORDINATOR: PATTY MCCOLLOM (714) 267-4567 or <mccollom@sbcglobal.net> INFO: SANDY GOSSELIN <SGOSSELIN@riversideca.gov> Riverside Contra Dance Website: <http://bees.ucr.edu/riversidedance/cdclink.html>

**OCT 10 (SAT)**

**NON-SIERRA CLUB EVENT**

The Castle Mountains are located along the California-Nevada border and are surrounded on three sides by the Mojave National Preserve. We'll drive past the densest Joshua tree forest in the world and take a few short hikes to get a glimpse of some of the interesting desert species, expansive views, and history of Hart mine area. We'll also enjoy lunch at the unique Hotel Nipton. For details, contact Laurel 909-260-8833 [williams@calwild.org](mailto:williams@calwild.org).

**CASTLE MOUNTAINS AUTO TOUR & DAY HIKE**

**CALIFORNIA WILDERNESS COALITION**

The Castle Mountains are located along the California-Nevada border and are surrounded on three sides by the Mojave National Preserve. We'll drive past the densest Joshua tree forest in the world and take a few short hikes to get a glimpse of some of the interesting desert species, expansive views, and history of Hart mine area. We'll also enjoy lunch at the unique Hotel Nipton. For details, contact Laurel 909-260-8833 [williams@calwild.org](mailto:williams@calwild.org).

**OCT 16 (FRI) 8:00 PM**

**NON-SIERRA CLUB EVENT**

No dance this Friday. We will all be at the Redlands Bowl watching the Brazilian folk dancers. Please join us there. INFO: GAIL SEEKINS (909) 825-4427 <lgseekins@sbcglobal.net>

**INTERNATIONAL FOLK DANCE**

**FOLK DANCE**

**UC RIVERSIDE FOLK DANCE CLUB**

No dance this Friday. We will all be at the Redlands Bowl watching the Brazilian folk dancers. Please join us there. INFO: GAIL SEEKINS (909) 825-4427 <lgseekins@sbcglobal.net>

**OCT 20 (TUE) 6:30 PM SAVE OUR SKYLINE: BOX SPRINGS THRU THE BADLANDS**

**OPEN SPACE MEETING**

**NON-SIERRA CLUB EVENT**

Help us preserve Moreno Valley's northern skyline & secure a natural open-space corridor between the Box Springs Mountains & the Badlands, including the upper basin of Reche Canyon. We meet at the Coffee Grinder, 23580 Sunnymead Blvd., Moreno Valley. INFO: DAN CLARK, (951) 924-2454 <saveourskyline@roadrunner.com>

**SAVE OUR SKYLINE: BOX SPRINGS THRU THE BADLANDS**

Help us preserve Moreno Valley's northern skyline & secure a natural open-space corridor between the Box Springs Mountains & the Badlands, including the upper basin of Reche Canyon. We meet at the Coffee Grinder, 23580 Sunnymead Blvd., Moreno Valley. INFO: DAN CLARK, (951) 924-2454 <saveourskyline@roadrunner.com>

**OCT 21 (WED) 7:30 PM**

**NON-SIERRA CLUB EVENT**

PROGRAM: A guest speaker presents an illustrated program on wildlife or natural science. Note that the December meeting will be a potluck holiday dinner starting at 6:30 PM. Come early to browse the gift tables & socialize. LOCATION: San Bernardino County Museum, 2024 Orange Tree Lane, Redlands. DIRECTIONS: Exit 10 at California St. INFO: DORI MEYERS, (714) 779-2201.

**AUDUBON SOCIETY**

**MEETING**

**SAN BERNARDINO VALLEY AUDUBON SOCIETY**

PROGRAM: A guest speaker presents an illustrated program on wildlife or natural science. Note that the December meeting will be a potluck holiday dinner starting at 6:30 PM. Come early to browse the gift tables & socialize. LOCATION: San Bernardino County Museum, 2024 Orange Tree Lane, Redlands. DIRECTIONS: Exit 10 at California St. INFO: DORI MEYERS, (714) 779-2201.

# Mountains

(Continued from page 3)

versible damage to the earth. According to NASA climatologist Jim Hansen, "if humanity wishes to preserve a planet similar to that on which civilization developed and to which life on earth is adapted, paleoclimate evidence and ongoing climate change suggest that CO2 will need to be reduced from its current 385 ppm to at most 350 ppm". **October 24<sup>th</sup>** comes six weeks before crucial UN meetings in Copenhagen. Therefore Bill Mc Kibbon and other international authorities have called for worldwide actions to show our resolve for climate change. The Mountains Group of the Sierra Club will have a **rally and walk** starting at 10 am at the south parking lot off San Moritz Drive at Lake Gregory in Crestline. After the rally the group will walk around the lake and stop twice to hear how global warming will affect the lake and the mountains. Our action will be one of over 1,000 internationally to call for U.N. action now!

**June Outings-** On June 6, five hikers enjoyed spring like weather on the moderate hike to Gray's Peak. Part of this trail burned in the 2007 fire, and it was interesting to see

which flowers and trees survived. We particularly noticed large groups of yellow, Western Wallflowers, which normally are single plants. Oaks too are sprouting again. The fire has opened up the section near the peak, which used to be very bushy, and gives one clearer views of Big Bear Lake and surroundings. After signing the book at the peak, and enjoying a snack, we returned to the trail head around 1 pm - An enjoyable outing by

Heather Sargeant. And on June 20, Bill Eng's facilitated the second "Here and Now" hike, along the Little Bear Creek section the North Shore Trail. The objective, which participants agreed to, was to talk only about what they were seeing or hearing. With no chit chat--for example about past vacations or about planned vacations--people would experience their surroundings. Some results: Among the over 20 different wildflowers in bloom, the group noticed the purple blossoms of the Poodle Dog Bush. This plant sprang up after the 2003 fire burned the area, and has persisted in several places along the trail. On the slopes they saw a brilliant red patch of Indian Paintbrush, and the yellow blossoms of Bush Poppy shrubs. Along the creek they found Crimson Columbine in bloom. In a shallow channel of water about 8 inches wide, a fish, about 5 inches long, darted through. That was a surprise.

## Annual Lobby Day Sunday & Monday August 23-24

Come join us in Sacramento for our annual Lobby Day on Sunday and Monday August 23rd and 24th. You will be part of a team that will help Sierra Club California pass our priority bills during the most exciting and challenging time of the year at the State Capitol. You will have opportunities for interaction with other activists and our professional lobbying staff, as well as with legislators and their staff.

This is a two-day event. On Sunday

afternoon our advocacy team will train you on how to lobby and brief you on our priority bills so that you can effectively advocate for them. On Monday, you will work the halls of the Capitol as teams, with meetings scheduled from morning through the afternoon.

For more information, please contact Annie Pham, Legislative Aide at [lobbyday@sierraclubcalifornia.org](mailto:lobbyday@sierraclubcalifornia.org) or (916) 557-1100 ext. 107

## Island Hopping in Channel Islands National Parks Final 2009 Fundraising Cruise Sep 11-14

Come and explore the wild, windswept islands of Channel Island National Park. In spring, the islands are ablaze with wildflowers. The pristine waters of the Marine Sanctuary will entice both snorkelers and kayakers in all seasons. Watch for the highly endangered Island Fox. Marvel at the

guel for white sandy beaches and a huge congregation of elephant seals; **Santa Rosa** for a rare stand of Torrey Pines; **Santa Cruz** for high mountains, deep valleys and the famous Painted Cave, **Anacapa** for the brown pelican rookery, a picturesque lighthouse, excellent snorkeling waters and a colony of friendly sea lions who will swim with snorkelers and follow kayaks.

The Cruise departs from Santa Barbara aboard the 68' twin diesel **Truth**. The fee, \$950, includes an assigned bunk, all meals, snacks, beverages, plus the services of a **ranger/naturalist** who will travel with us to lead hikes on each island and present evening programs. The proceeds from these fundraising cruises will benefit Sierra Club's political programs in California To make a reservation mail a \$100 check, payable to Sierra Club to leader: Joan Jones Holtz, 11826 The Wye St., El Monte, CA 91732. Contact leader for more information (626-443-0706; [jholtzhl@aol.com](mailto:jholtzhl@aol.com))



San Miguel Island Hike

Joan Jones Holtz

sight of whales, dolphins, sea and land birds, endemic plants, and reminders of the Chumash people who lived on these islands for thousands of years. All islands are ringed with rugged shorelines and dotted with sea caves. Each island offers special charm: **San Mi-**

## Rancho Santa Ana Botanic Garden Natural History Classes & Field Trips

The Rancho Santa Ana Botanic Garden in Claremont has an extensive list of classes and field trips including Horticulture and Botany classes, Natural History classes and field trips and Art classes. For a complete description and fees go to [www.rsabg.org](http://www.rsabg.org) and click on "View Full Calendar" or contact Cotton Coslett at [ccoslett@rsabg.org](mailto:ccoslett@rsabg.org) or 909-625-8767, ext. 224.



**Earth Share**  
OF CALIFORNIA

*One Environment...  
One Simple Way to Care for it*

Join us in protecting the future by doing your share today.

How can you choose between the eagle and the buffalo? Between the elephants and the whales?

Between drinking clean water and breathing clean air? Between parks and beaches? How can you choose? Would there be a right choice?

Now there's a way to help not just one, but all these things. It's called Earth Share of California — the world's leading environmental and conservation charities working together.

Through Earth Share of California you can make a one-time gift, or a payroll deduction donation that helps every day to preserve and protect the environment — locally, regionally, nationally, and globally.

Earth Share is not part of your employer's workplace giving campaign? We'd like to do something about that. Call Ladd Seekins at 909-888-0161 weekdays or 909-825-4427 evenings and weekends. Address e-mail to [iw-fladd@eee.org](mailto:iw-fladd@eee.org).

## MORENO VALLEY

(Continued from page 3)

mation. Updated information can be found at the Group's web site: <http://sangorgonio.sierraclub.org/moreno-valley/index.html> Project planner for the Highland Fairview project is Mark Gross, Moreno Valley Planning Department, (951) 413-3222. Thank you to all of you who have given donations to support the lawsuit!

There is no new information on the ProLogis Project, a 2 million square foot warehouse project on planned for eastern Moreno Valley. Also going through the city's planning process is the Ridge Property Trust Project, almost 1 million square foot warehouse project. The city planning department is reviewing the initial study and the Notice of Preparation for the Draft Environmental Impact Report for the project may be released sometime soon. Planner for both of the projects is Jeff Bradshaw, (951) 413-3224. The land for both projects is adjacent to the south edge of Highway 60 between Moreno Beach Drive and

Redlands Boulevard.

Although the city has numerous warehouses in various stages of planning (most are located adjacent to March Air Reserve Base and southern Moreno Valley), it is possible that the old Moreno Highlands Specific Plan (MHSP) (1,800 acre residential project approved in 1991) might be slated for development as warehouses if the city puts into place a Logistics Modified General Plan for the specific plan area. The MHSP project area is located south of Highway 60 and on the northern boundary of the 19,000 acre San Jacinto Wildlife Area in eastern Moreno Valley. More information on the industrial development in the city can be found at: [http://www.moreno-valley.ca.us/do\\_biz/index.shtml](http://www.moreno-valley.ca.us/do_biz/index.shtml)

According to information from the California Air Resources Board, the Inland Empire has the worst air pollution in California. The largest source of diesel emissions in the South Coast Air Basin, which includes Riverside and San Bernardino counties, is the goods-movement industry and its associated warehouse distribution centers. Riverside

County is the first in the nation for asthma, heart disease and respiratory ailments.

Riverside County is currently updating its General Plan. The General Plan Advisory Committee (GPAC) has been meeting since the fall of 2008 to discuss updating Policy Areas within the General Plan. The GPAC is composed of interested parties (landowners, developers, water interests) with one representative from the environmental community, George Hague. One of the areas slated for change is called the Northeast Agricultural Conversion Policy Area. The area includes lands which include two proposed but not yet approved specific plans (Villages of Lakeview Specific Plan 342 and the Motte Ranch Specific Plan 366) which are located on lands north of the Ramona Expressway. It continues east along the north portion of the Ramona Expressway and ends at Bridge Street in San Jacinto. Although the two specific plans have not been approved by the Riverside County Board of Supervisors, the zoning reflects the land uses proposed by each specific plan. It zones land adjacent to the flood plain for residential, it zones land adjacent to the Alquist-Priolo Zone of the San Jacinto Fault (the most active fault in California) as residential, and it zones land on collapsible unstable soils as residential. The GPAC committee will meet on September 9 to discuss the Northeast Agricultural Conversion Policy Area. Agendas and information on the general plan update can be found at: <http://www.rctlma.org/planning/content/hearings/gpac/gpac.html> Please call George Hague at (951) 924-0816 if you have questions or concerns about the update. Planner for the update is Mitra Mehta-Cooper, Riverside County Planning Department, (951) 955-8514.

The Riverside County Transportation Commission approved building only half of its planned Mid County Parkway at their July 8 meeting. Due to environmental issues and a \$3 billion price tag, the commission voted to build only the eastern segment of the project between the city of San Jacinto and Interstate 215 (currently known as the Ramona Expressway). Although residents along the I-215 to Corona segment are relieved that the Cajalco Road will be improved instead of building a separate parallel freeway, many questions remain regarding building the eastern segment. The shortened project will certainly have an effect on sensitive and endangered plants and animals at both the San Jacinto Wildlife Area and Lake Perris State Recreation Area. Light pollution, noise pollution, air quality issues are some of the major issues. A portion of the proposed (unapproved) Villages of Lakeview Specific Plan 342 is slated to be wedged between the southern

boundary of the San Jacinto Wildlife Area and the northern edge of the Ramona Expressway. This part of the specific plan contains the densest number of units. Freeway ingress and egress will compress the density of the number of units adjacent to the wildlife area. Also no alternative forms of transportation have been proposed such as light rail, buses, car and van pooling. The environmental report will have to be reissued to address the changes in the project. As mentioned previously, many individuals have suggested that the money would be better spent by making modest improvements to the Ramona Expressway, Winchester Road, Highway 74 and Gilman Springs Road instead building a freeway. Information on the project can be found at: [www.midcountyparkway.org](http://www.midcountyparkway.org)

The city of Moreno Valley Recreational Trails Board is sponsoring a "Hike to Box Springs M Trail" on Saturday, October 24, 2009. Meet at 8:30 a.m. at Canyon Springs High School, 23100 Cougar Canyon Drive, Moreno Valley. Call (951) 413-3702 for more information and to confirm start time for the walk. The Recreational Trails Board sponsors approximately five hikes throughout the year in Moreno Valley.

As fall approaches, the San Jacinto Wildlife Area wetlands areas will fill with migrating and overwintering waterfowl and shorebirds. By December wintering birds of prey will also have migrated to the valley. The Friends of the Northern San Jacinto Valley are in the process of organizing their fall walks at the SJWA and will have them posted on their web site at [www.northfriends.org](http://www.northfriends.org) In the meantime, if you plan to visit the wildlife area this fall, please remember that waterfowl (late October to February) and pheasant hunting (all Mondays, November 16-21, plus a youth day on November 15<sup>th</sup>) takes place at the wildlife area. Hunting is allowed at all state-run wildlife areas and hunting fees help support the acquisition of wildlife habitat throughout the state of California. Please call the wildlife area office during normal business hours at (951) 928-1196 to find out when wetlands and upland game areas will be closed for hunting. The wildlife area is north of the Ramona Expressway in Lakeview. Take Davis Road 2.2 miles to the area headquarters. The wildlife area is open from dawn to dusk seven days a week.

The Moreno Valley Group has many issues to follow, and we are looking for more volunteers. Any amount of time you could contribute would be appreciated. For more information on group meetings and volunteering with the Moreno Valley Group, contact Ann McKibben at (951) 924-8150, Theresa Carson, (951) 242-4752 or George Hague at (951) 924-0816 or e-mail us at: [movalleygroup@yahoo.com](mailto:movalleygroup@yahoo.com).



## Huts and Lodges

Want to escape to the mountains? Try visiting one of the Sierra Club Huts or Lodges. Stay overnight at the best rates in town.

Keller Ski Hut, built in 1938 is at an elevation of 6800 feet on Highway 18 between Running Springs and Big Bear in the San Bernardino Mountains, across from Snow Valley Ski Area. An adventure pass is required. There are two rustic living/dining rooms; fully equipped kitchen with cookware, dishes, utensils, stove, refrigerator; two dormitory sleeping lofts with 30 sleeping pads on floors; and bathroom. On open weekends or work parties/overseer training, call Jacqueline Meese (714-427-0457). Keller rates (SC): \$3.00 Day; \$8.00 overnight.

Harwood Lodge, built in 1930 to honor Aurelia Harwood, the first woman president of the Sierra Club is located in the San Gabriel Mountains on Mt. Baldy at 6000 feet elevation. It is about 2 miles after Icehouse Canyon and across from Snow Crest Park on the way up Mt. Baldy Road. The driveway on the right is shared with the Zen Center. There is a fully equipped kitchen, dormitory sleeping facilities and restrooms with showers. On Open Weekends, no reservation is required. Check in with the Overseer between 10:00 a.m. Saturday until 3:00 p.m. Sunday. SC Rates: \$5.00 Day; \$12.00 overnight.

San Antonio Ski Hut, built by the Ski Mountaineers in 1937. At 8200 feet, it is reached by a steep 3 mile hike with 2200 feet of gain. Rates: \$1.00 Day; \$10.00 overnight.

Open weekends/Work Parties/Overseer Training for these huts and lodges can be found by visiting the Angeles Chapter Website (access through [sierraclub.org](http://sierraclub.org)) or in the Angeles Schedule of Activities .

# Mojave

(Continued from page 4)

but I am told (by MDAQMD) that the non-attainment is because of air pollution FROM DOWN BELOW, and mostly from mobile sources! In other words, every diesel truck added to the Moreno Valley area will increase the pollution coming up through the Cajon Pass. Now I ask you, do you think a new freeway (the High Desert Corridor) from Palmdale to Apple Valley will help to clean up the smog as suggested in all of the resolutions on the SANBAG website? This could be true, if that "corridor" is a metro link for commuters and train facility for goods, and/or if all the cars and trucks on a roadway are required to use "clean" fuel. The information about the High Desert Corridor includes this statement: "This missing trade link along the perimeter of the Southern California region will

provide the time and economic incentives necessary for freight trucks and motorists to by-pass the most congested areas of the region and thus directly improve the air quality and mobility of the rest of Southern California".

How will it do that? The first step is to educate ourselves, pool our resources, and learn how to speak out. Join our group effort to become aware of large projects that may contribute to poor air quality in the Victor Valley by letting our Excom Members know about the project. Don't assume that we already know and have the time and energy to pursue your concerns about every proposed project. We need your help with this. The Mojave Group has no paid staff members. We are all volunteers. Once our area has attracted the maximum number of polluting industries and those industries are then made to clean up their act, the business will move away, leaving a poverty stricken, crime ridden ghost town (such as San Bernardino) in their wake.

## California Environmental Quality Act (CEQA)

(from the Air Quality Management District web site <http://www.aqmd.gov/ceqa/>)

CEQA was adopted in 1970 and intended to:

- inform governmental decision-makers and the public about potential environmental effects of a project;
- identify ways to reduce adverse impacts;
- offer alternatives to the project; and
- disclose to the public why a project was approved.

CEQA applies to projects undertaken, funded or requiring an issuance of a permit by a public agency. The AQMD has two basic roles under CEQA:

1. Lead Agency; responsible for preparing environmental analysis in the form of an Environmental Impact Report (EIR), Environmental Impact Statement (EIS), Negative Declaration (ND), or Environmental Assessment (EA). For information regarding these document types, please refer to the [Frequently Asked Questions \(FAQs\)](#).
2. Commenting Agency Responsibilities; review and comment on air quality analysis prepared by other public agencies.  
Send suggestions or comments on this website to [ceqa\\_admin@aqmd.gov](mailto:ceqa_admin@aqmd.gov)

## Mojave Group Table at the High Desert Farmer's Market

Members of the Mojave Group, along with other conservation groups enjoy lively discussions with each other and the wider community at the Farmers Market on Thursday mornings. The Farmers market is held at Victor Valley College on Bear Valley Road. Look for the Sierra Club banner.

We invite you to join us between 8am and noon to find out more about our group and to discuss any issue that is of concern to you! We sometimes have petitions to sign, and you can get information about current hikes, meetings and other activities. If you plan on staying awhile, you may want to bring your own chair! Don't forget bags for fresh fruits and veggies from the other vendors. Don't be shy, ask the vendors where the produce is grown and if it is "organic". The Farmer's Market is also a great place to browse for locally made items. You might find anything from soaps and candles to patio furniture. Thank you, Estelle, for keeping this outreach project alive!



## Membership

**YES, I want to help safeguard our nation's Precious natural heritage. My check is enclosed.**

Name \_\_\_\_\_

Address \_\_\_\_\_

City \_\_\_\_\_

State \_\_\_\_\_ ZIP \_\_\_\_\_

E-mail \_\_\_\_\_

Check enclosed, made payable to Sierra Club  
MasterCard Visa Exp Date \_\_\_\_/\_\_\_\_/\_\_\_\_

Cardholder Name \_\_\_\_\_

Card # \_\_\_\_\_

Contributions, gifts and dues to the Sierra Club are not tax deductible; they support our effective, citizen-based advocacy and lobbying efforts. Your dues include \$7.50 for a subscription to Sierra magazine and \$1.00 for your Chapter newsletter.

### MEMBERSHIP CATEGORIES

|              | INDIVIDUAL | JOINT  |
|--------------|------------|--------|
| INTRODUCTORY | \$25       |        |
| REGULAR      | \$39       | \$47   |
| SUPPORTING   | \$75       | \$100  |
| CONTRIBUTING | \$150      | \$175  |
| LIFE         | \$1000     | \$1250 |
| SENIOR       | \$24       | \$32   |
| STUDENT      | \$24       | \$32   |

F94

W-1200



Sierra Club

P.O. Box 52968, Boulder, CO  
80322-2968

## Sierra Student Coalition

**We Can Do It!**



**Students: Check out <http://www.ssc.org>**

**Get Involved**—Whether you're brand-new to activism or you've been organizing for years, the Sierra Student Coalition offers many ways to plug into the youth clean energy movement.

**Stay Connected**—Sign up for the SSC Update, our monthly newsletter, to stay up to date on the SSC's campaigns and highlights. Join the SSC Energy Forum to receive e-mails about energy campaigns and new opportunities and events.

**Get Trained**—Learn more about the SSC's phone trainings or summer trainings, where you can get the skills you need to win victories for clean and just energy solutions.

**Questions? - E-mail [sierra.student@sierraclub.org](mailto:sierra.student@sierraclub.org)**

# 350 Climate Action

(Continued from page 1)

opment of the area, particularly to support the agricultural industry that fueled the local economy.



Rail trails are multi-purpose public paths created from abandoned railroad corridors. The rail trail follows the Southern Pacific railroad corridor which travels east-west through this valley. The 21-mile long rail trail will eventually begin in downtown Claremont and end in downtown Rialto.

The Pacific Electric Trail corridor is an opportunity that comes rarely to a region or city. Imagine being able to ride a bicycle from Claremont to Rialto along a bike path separated from automobiles. Within the next few years, this dream



The Pacific Electric Trail Today

will become a reality. The City of Rancho Cucamonga, acting as the lead agency, has joined together with the San Bernardino Associated Governments (SANBAG) and surrounding cities, to develop a multi-purpose trail that would link the cities of Claremont, Montclair, Upland, Rancho Cucamonga, Fontana and Rialto. The rail trail would also connect to a 6.9-mile rail trail project being planned from Claremont to San Dimas.

This is our vision, and you can help make it a reality.

The purpose of the trail is to provide recreational opportunities for cyclists, pedestrians, runners and equestrians. Trail users would enjoy exercise,



Original Pacific Electric train car

convenient access to jobs, public facilities and shopping, while exploring the history and culture of the area. The San Bernardino Associated Governments, the City of Rancho Cucamonga and the participating cities have exercised great vision to designate this corridor for trail use. This will allow the cities to create a beautiful common area that can be shared by commuters, pedestrians, cyclists, equestrians, and other non-motorized transportation. A beautiful link across the Pomona Valley. You can help change our region.

### About 350 Org

We are a group of people from around the planet—young and old, scientists and writers and activists—who have one thing in common. We know the most important number on earth: 350. And we know how to use that number to finally get global action on the worst crisis humans have ever faced. But we can only do it if you help.

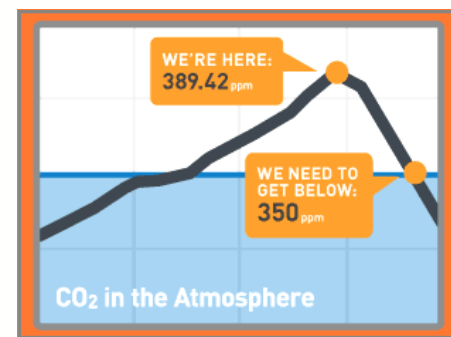
A year ago, our greatest climatologist—NASA's James Hansen—and his team produced a landmark series of studies. They showed that if we let the amount of carbon in the atmosphere top 350 parts per million, we can't have a planet "similar to the one on which civilization developed and to which life on earth is adapted."

The bad news is we're already past that number—we're at 390 parts per million, which is why the Arctic is melting, why drought is spreading across the planet, why people are already dying from diseases like dengue fever and malaria occurring in places where they've never been seen before.

The good news: that number gives us a target to aim for. When the world's leaders meet in Copenhagen in December to reach agreement on a new climate treaty, we need them to go farther than they've planned to go: we need to make sure they'll pay attention to the latest science and put forward a plan that gets us back to safety.

The Arctic is sending us perhaps the clearest message that climate change is occurring much more rapidly than scientists previously thought. In the summer of 2007, sea ice was roughly 39% below the summer average for 1979-2000, a loss of area equal to nearly five United Kingdoms. Many scientists now believe the Arctic will be completely ice free in the summertime between 2011 and 2015, some 80 years ahead of what scientists had predicted just a few years ago.

Propelled by the news of these accelerating impacts, some of the world's leading climate scientists have now



revised the highest safe level of CO2 to 350 parts per million. That's the last number you need to know, and the most important. It's the safety zone for planet earth. As James Hansen of America's National Aeronautics and Space Administration, the first scientist to warn about global warming more than two decades ago, wrote recently, "If humanity wishes to preserve a planet similar to that on which civilization developed and to which life on Earth is adapted, paleoclimate evidence and ongoing climate change suggest that CO2 will need to be reduced from its current 385 ppm to at most 350 ppm."



## Los Serranos

(Continued from page 4)

stewardship of our local mountains and wilderness areas. We also are involved in local conservation issues. Currently we have a committee following the potential Carrari Ranch development in Rancho Cucamonga. We have commented on the Chino Hills State Park plan for power transmission lines. Many of our members are actively involved in the San Gabriel Mountains Forever Campaign, working to convince our local Congressman David Dreier to introduce legislation adding wilderness in our mountains. Join our active, involved members by becoming involved in our Executive Committee!

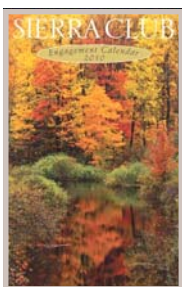


Moonlight Hike

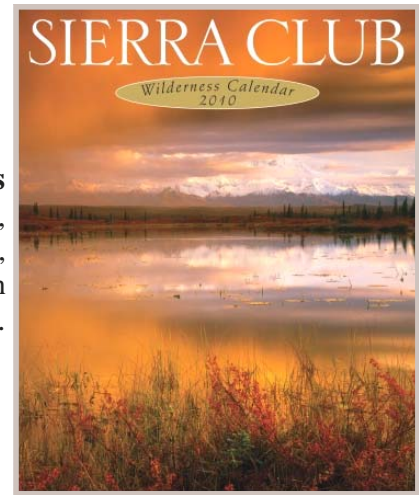
Carle Riley/Los Serranos

## SIERRA CLUB 2010 CALENDARS

**Sierra Club 2010 Wilderness Wall Calendar**—Spiral bound, Month-by-month format, Featuring 12 majestic North American landscapes.



**Sierra Club 2010 Engagement Calendar**  
Week-by-week format, featuring 57 spectacular photographs and "wire-o" binding.



### Order Form

**Prices Reduced! Save up to 30% off the list price. Support local conservation efforts.**  
*Titles may be combined for quantity pricing.*

| Title                           | 1-4 price | 5-9 price | 10+ price | Quantity | Price | Total |
|---------------------------------|-----------|-----------|-----------|----------|-------|-------|
| <b>Wilderness Wall Calendar</b> | \$12.50   | \$11.50   | \$10.50   | _____    | _____ | _____ |
| <b>Engagement Calendar</b>      | \$13.50   | \$12.50   | \$11.50   | _____    | _____ | _____ |

Subtotal \_\_\_\_\_  
Shipping\* \_\_\_\_\_

\*Shipping to one address: \$3.75 for the first calendar and 25 cents for each additional calendar. Make checks payable to Sierra Club and mail this coupon to:

**Sierra Club Calendars, 4079 Mission Inn Ave., Riverside, CA 92501**

(Cost includes all applicable sales taxes computer to the nearest mil)

**Total** \_\_\_\_\_

Name \_\_\_\_\_ Phone \_\_\_\_\_

Address \_\_\_\_\_

City, State, Zip code \_\_\_\_\_