



# Palm and Pine



SIERRA CLUB  
FOUNDED 1892

A publication of the San Gorgonio Chapter of the Sierra Club  
Serving Riverside and San Bernardino Counties

Volume 43 Number 5

Protect America's Environment For our Families . . . For our Future

September/October 2013

## In This Issue

Contacts for Chapter Office and Groups; September's Chapter Program .....	2
Group News Big Bear, Los Serranos & Mojave .....	3
Group News Moreno Valley & Mountains.....	4
Calendar of Outings, Meetings, Events; EarthShare; Palm & Pine Advertising .....	5-11
Sierra Club 2014 Calendars Order Form.....	6
Group News Santa Margarita; Island Hopping in Channel Islands National Park .....	10
Calico Solar Project is Dead!.....	11
October's Chapter Program; Sierra Club Membership Application; Political Update . . .	12

## Membership Meetings

### Tuesday, September 3 "The Riverside Land Conservancy"

Speaker: Gail Egenes  
(see write up on Page 2)

### Tuesday, October 1 "Adventure in Lake Clark National Park, Alaska"

Speaker: Brian Elliott  
(see write up Page 12)

Programs begin at 7:30 p.m.  
at the San Bernardino  
County Museum, 2024 Orange  
Tree Lane, Redlands  
(California St. exit off 10 Fwy)

## Now is the Time for Solar Action at Home!!

By Kim Floyd, San Gorgonio Chapter Conservation Chair

**D**id you know that our community and other communities across California are investing millions in rooftop solar? That's right, dozens of cities, schools, businesses, and thousands of homes are now generating their own power through rooftop solar saving local families, businesses and your community lots of money. It also adds up to a whole lot of clean, reliable, local power that's improving air quality and creating jobs right in your own backyard.

This progress is amazing and proof that when we work together to change our energy economy we can accomplish incredible things. It is no accident California leads the nation in rooftop solar installations and solar jobs. It is because of strong support and advocacy from people like you.

Californians understand that our greatest energy resource — abundant California sunshine — is the key to our future prosperity and sustainability on our planet.

That is why the Sierra Club has a goal of increasing rooftop solar by ten-fold across the state. In California, we already have installed 1.5 gigawatts (GW) of rooftop solar and are on our way to 15 GW — enough power for 11,250,000 homes. Think of how incredible that will be!

Now is the time for you and your neighbors to join the crowd and get on board with your own rooftop solar. Your Sierra Club is working hard for the second year with its solar partner Sungevity, one of the country's leading residential solar providers, to help families go solar easily and affordably. This partnership is helping consumers save money on electricity bills, reduce pollution and support the Sierra Club's overall mission to explore, enjoy and protect the planet. Through the partnership, each time someone goes solar with Sungevity and the Sierra Club, that person will receive a \$750 cash gift card and Sungevity will contribute \$750 to the Sierra Club.

With many Americans still struggling in today's tough economy, it has become more difficult for consumers to prioritize efforts like reducing pollution and supporting their favorite non-profits, while simultaneously saving money. Through the Solar

Homes partnership, Sierra Club and Sungevity allow Sierra Club supporters to accomplish all three by adding residential solar panels to their homes. Going solar can help consumers save money on their electricity bills. For example, Sungevity found that on average, customers can save up to 15% on electricity costs from day one when they go solar. Under the solar leasing plan, homeowners can "rent their rooftop," allowing them to save money on their electric bills by paying Sungevity directly, without any upfront costs, financing, installation, and maintenance.

Rooftop solar also helps people protect the planet by reducing pollution: every kilowatt hour of solar generated replaces electricity that might come from dirty fossil fuels like coal.

"We are proud to be working with Sungevity to help families across the country save money and support the Sierra Club by going solar," said Michael

Continued on Page 12 >>>

## Palm and Pine Fund Appeal

It's time to consider your contribution to the San Gorgonio Chapter's Fall Fund Appeal. A return envelope has been inserted in this issue of the *Palm and Pine* for your check.

Did you know that the chapter receives only \$1 each year from your Sierra Club membership dues for publication of your Chapter Newsletter? The Fall Fund Appeal is specifically designated to help make up the difference between our actual costs and the dollars received. Your contribution allows continued publication of the Inland Empire's most comprehensive environmental newspaper. The *Palm and Pine* is the main source of information for those participating in our Outings program. In fact, on the average, about 30% of the total newspaper is devoted to Outings.

If your insert is missing, please make your check payable to the Sierra Club and mail it to Rick Estes, 4079 Mission Inn Avenue, Riverside, CA 92501.

Gifts to the Sierra Club support our effective, citizen-based advocacy and lobbying programs and therefore are not tax deductible.

## SIERRA CLUB SOLAR HOMES PROGRAM

Request a Free iQuote and see how rooftop solar will save you money  
Just go to the San Gorgonio Chapter website and click on Solar Homes <<http://sangorgonio.sierraclub.org>>

### Why Now?

- If you care about the environment, rooftop-solar is as green as it gets.
- Solar has never been more affordable—materials and installation costs have fallen dramatically. If you purchase there are significant Federal Tax Credits and most Chapter locations have additional incentives available to bring the cost down.
- Rooftop solar helps the economy. The Sierra Club Solar Partner is Sungevity but the installers will be local reputable companies. You will be creating Green Jobs!

## THIS IS HOW IT WORKS



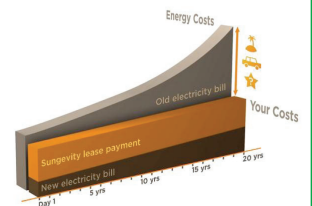
- ← Go to the San Gorgonio Chapter Website and click on the Solar Evaluation photo
- You will be asked for your address and a "Google" image of your house will pop up
- Confirm it is your house and enter your electric usage for last month from your bill
- Add your e-mail and phone and within 24 hours, you'll receive your iQuote
- The quote will show your immediate savings going solar, savings over time, the environmental impact and your proposed system's specifications

### THAT'S IT! THERE IS NO OBLIGATION

If you like what you see then you'll need to decide what's best for you—should you lease or buy?  
If you want to proceed, Sungevity will link you up with a local Solar Installer

### SOLAR LEASE

- Upfront costs range from zero to a small down payment (Usually \$1,000)
- An average Sungevity customer saves 15% on electricity from day one
- You'll lock in your energy costs for 20 years regardless of rising energy costs
- All maintenance and repairs, even insurance, are covered by the lease
- You have an option to prepay your solar lease. If you prepay, you keep the advantages of leasing without the monthly payments and save on carrying costs



### OUTRIGHT PURCHASE

- Larger upfront investment but no payment for life of system (25+ years)
- You are eligible for the Federal Investment Tax Credit and other available rebates
- If RECs are available, you are eligible to benefit from associated revenue
- You are responsible for repair/maintenance but most panels carry a 25 year warranty
- It puts idle dollars to work immediately with a much better rate of return

**More information about the Solar Homes Program**—After a thorough vetting by the Club's Business Partnership Committee, legal staff and financial staff, and a competitive bidding process the Club has selected Sungevity to be the Club's Solar Partner. In today's market most residential solar customers lease their solar system so there is little or no upfront money required and very little paperwork or other concerns. As a major supplier of solar systems to the residential market, Sungevity through its competitive pricing can provide ongoing energy cost savings while making a \$750 contribution to the Club's Clean Energy Programs and providing a \$750 cash gift card back to you. As always, you are encouraged to do adequate comparison shopping for your solar solution.

# Contact Us . . .

## San Gorgonio Chapter Website http://sangorgonio.sierraclub.org

**San Gorgonio Chapter Excom**  
**Chair**.....Rick Estes 951-314-3328  
 .....scsangor@gmail.com

**CCL Delegate**. Steve Farrell 661-449-2867  
 .....mr\_sqf@yahoo.com

**Secretary** ..... Kim Floyd 760-680-9479

**Treasurer** ..... Ladd Seekins 909-825-4427  
 .....ladd.g.seekins@gmail.com

**Conservation Chair** ..... Kim Floyd  
 .....760-680-9479  
 .....kimffloyd@fastmail.fm

**Litigation Chair** .....Joan Taylor

**Membership Chair** .....Mike Millspaugh  
 .....951-653-2068  
 .....mmillspaugh@verizon.net

**Outings Chair** .....Ralph Salisbury  
 .....951-686-4141  
 .....ralphsalisbury@att.net

**Political Chair** .....Jono Hildner  
 .....760-861-5365  
 .....jono@hildner.com

**SC Council Delegate** .....Ralph Salisbury

### CNRCC Delegates

George Hague .....909-924-0816

Kim Floyd .....760-680-9479

**Wilderness Skills/Leadership Training:**  
 ..... ralphsalisbury@att.net

### Group Representatives To Excom

**Big Bear Group:**  
 .....Ed Wallace 909-584-9407  
 .....ednjeanne@charter.net

**Los Serranos Group:**  
 .....Mary Ann Ruiz 909-815-9379  
 .....ruizmaryann@gmail.com

**Mojave Group:**  
 .....Jenny Wilder 760-220-0730  
 .....jensois@aol.com

**Moreno Valley:**  
 .....George Hague 951-924-0816

**San Bernardino Mtns. Group:**  
 ..... Dave Barrie 909-337-0313  
 .....barriemail@mac.com

**Tahquitz Group:**  
 ..... Jeff Morgan 760-324-8696

**Santa Margarita Group:**  
 .....Jim Mitchell 951-506-9607  
 .....sierraclubsmg@gmail.com

### Chapter Conservation Issue Chairs

**Desert Issues – High Desert**  
 ..... Kim Floyd 760-680-9479  
 .....Kimffloyd@fastmail.fm

**Desert Issues – Low Desert**  
 .....Joan Taylor  
 .....palmcanyon@mac.com

**Desert – Eagle Mountain**  
 .....Donna Charpied 760-392-4722  
 .....laronna@earthlink.net

**Forestry Issues – Mountaintop RD**  
 .....East—Ed Wallace 909-584-9407  
 ..... West—Steve Farrell 661-449-2867  
 .....mr\_sqf@yahoo.com

**Forestry Issues – San Jacinto RD**  
 .....Joyce Burk 760-252-3820

**Forestry Issues – Cleveland NF**  
 .....Gene Frick 951-689-2283  
 .....gfrick@cosmoaccess.net

**Water Issues**.. Steve Farrell 661-449-2867

**California Wild Heritage Campaign**  
 .....Joyce Burk 760-252-3820

### Group Directory

**Big Bear Group:**  
 Chair – Ed Wallace 909-584-9407  
 Meets 3rd Thursday, Discovery Center  
 North Shore, 6:30 p.m.  
 www.sierraclubbigbeargroup.org

**Los Serranos Group:**  
 Chair – Mary Ann Ruiz 909-815-9379  
 ruizmaryann@gmail.com  
 Meets 3rd Tuesday Upland Presbyterian  
 Church, Ed Building 7 p.m.

**Mojave Group:**  
 Chair – Jenny Wilder 760-220-0730  
 jensois@aol.com  
 Meets 2nd Wednesday except Jul. & Aug.  
 Sterling Inn, Regency Room,  
 17738 Francesca, Victorville 7 p.m.  
 (just north of Bear Valley and Ridgecrest)  
 (also contact earthlingwiley2000@yahoo.com)

**Moreno Valley Group:**  
 Chair – Michael Millspaugh 951-653-2068

**Mountains Group:**  
 Chair – Dave Barrie 909-337-0313  
 barriemail@mac.com  
 Meets 2nd Monday 7:00 p.m.  
 Except Aug. & Dec. St Richard’s  
 Episcopal Church, 28708 Hwy 18, Sky  
 Forest

**Santa Margarita Group:**  
 Chair – Jim Mitchell 951-506-9607  
 sierraclubsmg@gmail.com  
 Meets 2<sup>nd</sup> Thur., 6:30 p.m. except July &  
 August at Rancho California Water District  
 Hqrts., 42135 Winchester Rd., Temecula

**Tahquitz Group:**  
 Chair – Jeff Morgan 760-324-8696

## Palm and Pine

USPS 341-430  
 ISSN 1090-9974

A bi-monthly newspaper serving  
 Riverside and San Bernardino counties.

Published by the  
**Sierra Club**

San Gorgonio Chapter  
 4079 Mission Inn Avenue, Riverside, CA 92501-3204  
 (951) 684-6203

http://sangorgonio.sierraclub.org

The *Palm and Pine* is published six times per year January/February, March/April/ May/ June, July/August/ September/October and November/ December. Submit all articles to the Editor by the 5th of the Month prior to issue. Preferred format is electronic mail. The Editor reserves the right to edit all work for reasons of space, clarity or libel. If you wish to have your photos or disks returned, please include a stamped, self-addressed envelope. Outings must be submitted to the appropriate Outings Chair.

### Editor

Jo Ann Fischer  
 PO Box 3164, Running Springs, CA 92382  
 (909) 939-0332  
 e-mail: Mywwuni@charter.net

### Outings Calendar Submissions

Ralph Salisbury  
 2995 Floral Ave, Riverside, CA 92507  
 (951) 686-4141  
 e-mail: ralphsalisbury@att.net

### Webmaster

Steve Farrell  
 e-mail: mr\_sqf@yahoo.com  
 http://sangorgonio.sierraclub.org

### Meetings Calendar Submissions

Ladd Seekins  
 22418 De Soto St, Grand Terrace, CA 92313-5474  
 (909) 888-0161  
 (909) 825-4427 Weekends & evenings  
 e-mail: ladd.g.seekins@gmail.com

### Non-Member Subscriptions (\$12.00)

Sierra Club, San Gorgonio Chapter  
 4079 Mission Inn Ave  
 Riverside, CA 92501-3204  
 (Sierra Club members not members of the San Gorgonio Chapter:  
 Supply Club membership number.)

### Member Change of Address

Sierra Club, Change of Address  
 PO Box 421041  
 Palm Coast, FL 32142-1041  
 (Be sure to supply Membership number)

The *Palm and Pine* is published bimonthly.  
 Periodicals postage paid at Riverside, CA

### Membership Information

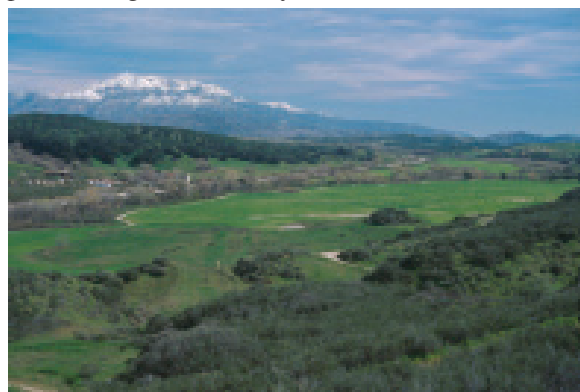
There is a membership coupon in this issue and address change information above. For other questions, contact the Sierra Club at (415) 977-5663 or ralphsalisbury@att.net

### POSTMASTER:

Send address changes to:  
 Palm and Pine  
 Sierra Club San Gorgonio Chapter  
 PO Box 421041, Palm Coast, FL 32142-1041

## Chapter Program on September 3<sup>rd</sup> to Feature Riverside Land Conservancy

**G**ail Egenes, Executive Director of the Riverside Land Conservancy, will speak at the September 3<sup>rd</sup> chapter meeting. Ms. Egenes is a member of the California Council of Land Trusts Board of Directors, Southern California Open Space Council Steering Committee and the Western Riverside County-Regional Conservation Authority Stakeholder Committee. She holds a B.A. in German, English and International Business and has been involved in non-profit management for 30 years.



San Tim Valley

In 2004 Ms. Egenes was responsible for the development of the Conservancy’s Mitigation Program and was instrumental in Riverside Land Conservancy receiving the 2006 Governor’s Environmental and Economic Leadership Award for Partnerships for RLC’s involvement in the Colton Dunes Conservation Bank.

Southern California is home to rich and diverse habitats, and areas of spectacular scenic beauty. Riverside Land Conservancy is a nonprofit land trust that works to protect land and habitat for future generations. In preserving our natural resources, it seeks to build community, preserve beauty and instill hope.

Founded in 1988 to create a local organization dedicated to protecting our open space and

### Riverside Land Conservancy



natural areas, Riverside Land Conservancy has become involved in conservation throughout inland Southern California.

As population continues to increase locally and globally, places

of protected natural lands that allow people to engage with the environment are critical for understanding and appreciating our influence on the environment. Simply put, we don’t know everything worth knowing about the world in which we live. A society with an environmentally aware and engaged population is better off because they have knowledge of complex systems, preserved history for social context, working examples of non-wasting resource cycles, and laboratories for future discovery.

RLC accomplishes its work by developing partnerships and

striking a balance between economic development and the protection of valuable ecological and cultural resources. RLC partners include willing landowners, real estate developers, natural resources businesses, governmental resource agencies and the community at large.

Since 1988 RLC has conserved over 12,000 acres through land purchases, donations and land use restrictions on fragile natural landscapes.



Empire Homes & San Bernardino Mountains



# Group News

## Big Bear Group

By Ed Wallace, Group Chair

### Monthly Meeting Subjects

Peter Jorris, the executive director of San Bernardino Mountains Land Trust, will be our speaker at the September 20<sup>th</sup> meeting. The San Bernardino National Forest has pockets of private land holdings interspersed throughout the forest that can be the subject of potential incompatible development. It has the highest percentage of such private inholdings than any other national forest. The San Bernardino Mountains Land Trust was formed to purchase and reclaim these critical missing parts of the SBNF. These missing pieces are integral to the overall scenic and ecological integrity of this heroic and inspirational mountain range. Saving these threatened private lands inside the forest is the best thing that can be done at this time to safeguard this priceless National Forest, which serves such a huge segment of our country's population. Peter will talk about the group's successes in achieving these goals and what remains to be done. He will also talk about the Trust's latest acquisition, Eagle Ridge, the last large parcel of undeveloped land in Lake Arrowhead.

Our October 18<sup>th</sup> meeting will be our annual Environmental Film Festival. Selected short films will be shown that address local, national and international environmental problems. Bring a comfortable folding chair and enjoy this informative meeting. Popcorn and drinks will be provided.

### Outings

The July schedule included a successful beginners' backpack lead by Ed Caliando and a 5-day trip into the beautiful Humphreys Basin lead by Ed Wallace and Terrance McCorkle. For those interested in these types of outings, you are urged to look at the future outings and contact the leader immediately if you are interested. Because of group permit restrictions, the group size is limited and the quota fills up fast.



Group backpack to Humphreys Basin.

### Conservation

Once again Marina Pont in Fawnskin has come to the forefront as a major issue that will need to be addressed by all the environmental organizations in the valley. The land, frankly, looks like a war zone with most of the large pine having been cut. What trees that are left will most likely die because of large amount of grading going on. Recently the developer announced in the local news paper that condos and lake front homes will soon be available. Sandy Steers of the Friends of Fawnskin and member of the Big Bear Group conservation committee confirmed with the county that the developer did not have approval for what is being proposed. Stay tuned ,another battle is right around the corner.

## Los Serranos Group

By Mary Ann Ruiz, Group Chair

Sierra Club members Brian and Janice Elliott will present a program at our September 17<sup>th</sup> meeting about their recent 14 day mobile tent camping safari in northern Botswana and an additional three days in the Victoria Falls area of Zambia. Northern Botswana has some of Africa's best wildlife viewing and is home to Africa's highest population of elephants. Brian and Janice experienced the magnificent scenery and wildlife through the unique perspective of a tent camping safari. They visited the great salt pan areas of Naix National Park and Nata Bird Sanctuary, took a boat ride in the Okavango Delta area and spent four days each in the Moremi Game Reserve and Chobe National Park. The trip focused on birding and observing wildlife in each area. The wildlife



experienced and enjoyed by them included hundreds of elephants, 21 lions, and three leopards, some of each no more than 5 feet from them. Of course there were many giraffe, wildebeasts, warthogs,

springboks and more seen as well. They also enjoyed seeing and identifying more than 160 species of birds. They will show and discuss their impressions of Africa through their digital images of the regions they visited including images of the birds and wildlife.

## Mojave Group

By Jenny Wilder, Group Chair

### Explore! Enjoy! Protect!

After two "dark" months the Mojave Group will resume monthly meetings in September. The ExCom (Executive Committee) meeting will be at 6 pm followed by the General Meeting, refreshments and program at 7pm on the 2nd Wednesday of the month. All meetings are held at the Sterling Inn on the corner of Francesca and Ridgecrest Roads in Victorville.

The Mojave Group territory stretches across the Mojave Desert from Wrightwood to Needles. It is a large area and every bit of it needs help! Issues affecting your quality of life are as varied as the flora and fauna in the magnificent Mojave Desert. We are seeking nominations to the Excom for the coming year (contact Jenny for information at JensOasis@aol.com or call 760 220 0730). Why not find out more and help to protect



Mudding in Deep Creek Canyon; Ken touches up an old patch with new mud.

Photo by Jenny Wilder

the place you call your home? Join us at the meetings! See you there Sept 11, 2013.

Many members live too far away to attend the meeting or even go on a hike, but many of you still do your part for the desert environment. By the time you read this we will be 9 months into 2013, and our local politicians and/or newspaper should have received at least a few of your letters. Did you make that commitment to write at least one letter this year, and have you followed through with it? Some people write several letters a month! By doing so, we can expand the appreciation of nature and elect those who sincerely care about the environment. We all benefit from and appreciate those members who are doing their part for the environment in which we live. Thank you!

Thanks to Melody (our Outings Chair) and a group of regulars, the popular weekly evening conditioning walks continued through the summer months and we anticipate some lively conversation and brisk exercise in the fall too.

### But wait! There's more!

We have three new Outings Leaders who are offering their first hikes this year. Wendy Walker, Bob Mourino and Norman Bossom successfully completed the leader training in June. Norman will be leading a hike to Arrastre Waterfall in October and another one in November in the Deep Creek Canyon. In October Wendy will lead a hike in Puma Canyon in Pinion Hills and will help you with identification of the varied flora in this amazing place. In late October, Bob will take you to see some quaking Aspens in the San Gorgonio Wilderness - hurry and get your reservation as this hike is limited in size!

Other Outings include: Lygeia has an "easy" backpack and a couple of carcamp as well as an easy-paced hike in the Phelan backcountry (Mormon Trail Hike). Jenny will take you to the top of Arrastre Canyon for a lovely view of the Juniper Flats Area etc.

On each hike, we celebrate the great outdoors and renew our connection with

Continued on Page 4 >>>



# Group News

## Mojave Group . . . from Page 3

nature. We invite you to join us. Check the Outings Calendar for the walk details and upcoming hikes. Don't forget to check the General Information, Rules and Disclaimers link on the Outings Calendar page.

Our Program Chair, Carol Wiley, has some interesting programs on hand for the upcoming meetings, including Mark Kitchell's film *A FIERCE GREEN FIRE - The Battle for a Living Planet*. The film is a passionate and ambitious documentation of the environmental movement from halting the building of dams in the Grand Canyon to the world wide challenge to combat climate change. It includes some powerful individual stories of people fighting to save their homes, their lives, their future and succeeding against all odds. It is a documentary of how much has been gained in protecting our environment and a reminder of how much we have to lose. We will be showing it in two parts at the Sept and October meetings. This riveting movie is not to be missed!



Deep Creek with early 1900s flume. — Photo by Jenny Wilder

The Pacific Crest National Scenic Trail is under a great deal of pressure to remain a National Treasure. In our area we are continually dealing with graffiti, mountain biking and motorcycle use. You can help protect this great hiking trail, just by hiking it and reporting any problems or by participating in work projects. Our Section "C" is over 300 miles from Hwy 10 near Whitewater to Hwy 15 near the Cajun Pass. For trail work dates and information contact the Pacific Crest Trail Association coordinator for Section C: John Hachey (909) 605-3219 or e-mail @goaliejhachey@msn.com. The Mojave Group continues to help with graffiti abatement in the Deep Creek Canyon using a method called "mudding." This proven method provides a graffiti deterrent and eventually the rock resumes its former beauty. If you would like to help please contact Jenny at JensOasis@aol.com or call 760 220 0730.

See our facebook page for details and updates on some of our activities (<http://www.facebook.com/pages/Mojave-Group-Sierra-Club/128853927174168>).

## Moreno Valley Group

By Ann Turner McKibben, Secretary

The Moreno Valley Group is planning to mail out their newsletter this fall. It will include the ballot for the Group Executive Committee fall election. Please look for our ballot, vote, mail in your ballot and check out our group news.

The group is also selling 2014 Sierra Club calendars. Please contact Ann McKibben at (951) 924-8150 (leave a message) or e-mail us at [movalleygroup@yahoo.com](mailto:movalleygroup@yahoo.com) if you would like to buy one of the beautiful calendars and support our efforts.

Community meetings regarding the World Logistics Center continue to be sponsored by the Center for Community Action and Environmental Justice, Sierra Club, Residents for a Livable Moreno Valley and many concerned citizens. The speakers at the meetings have covered topics related to air pollution/health issues, increased traffic congestions, and the project's effect on the San Jacinto Wildlife Area. The next meetings will be held on Saturday, September 14 and October 12, 10:00 am-noon. For more information contact Tom Thornsley at (909) 797-1397, [savemorenovalley@hotmail.com](mailto:savemorenovalley@hotmail.com) and view their Facebook page for more information: <https://www.facebook.com/SaveMoVal>

The comment letters on the draft environmental impact report for the World Logistics Center warehouse project were due in April. As a public service The Press-Enterprise has posted the comment letters on their web page: <http://blog.pe.com/2013/07/11/moreno-valley-city-still-review-comments-on-mega-warehouse-proposal/> The proposed project will significantly impact air quality, traffic, and cause long-term health issues. These issues will affect all of the Inland Empire,

beyond the geographic borders of the city. The proposed project will cover 2,710 acres (approximately the size of 700 full-sized football fields). The project site is located between Highway 60 and the northern boundary of the state-owned 11,000 acre San Jacinto Wildlife Area. The draft document can be found on the city's web page: <http://www.moreno-valley.ca.us/misc/wcl-deir.shtml> Please contact: Mark Gross ([markg@moval.org](mailto:markg@moval.org)), Planning Division, City of Moreno Valley, 14177 Frederick Street, P.O. Box 88055, Moreno Valley, CA 92552) and request that you be notified of all meetings as well as future documents for this project.

Again we ask that our members think of making a donation to the Moreno Valley Group. The proposed project will be one of largest facilities in the country (not county, but country). If you have not already sent us a check, please take time to donate what you can to help the Moreno Valley Group submit additional comments on the WLC's massive documents. If we decide to litigate, these comments could make the difference between losing and winning. Thank you to those who have already donated! Please send your donations to: Sierra Club, Moreno Valley Group, P.O. Box 1325, Moreno Valley, CA 92556-1325. We appreciate

your help!

Outings leader Theresa Carson will start the group's fall outings schedule with a hike at Sycamore Canyon Wilderness Park on Wednesday, September 18, 6 p.m. Meet



San Jacinto Wildlife Area - Home to wintering birds of prey. — Photo by George Hague

at the parking lot on the south side of Central Avenue between Canyon Crest Drive and Interstate 215. For more information on our group hikes check out our web page: <http://www.sangorgonio.sierraclub.org/moreno-valley/index.html> and Facebook

page: [www.facebook.com/MorenoValleySierraClub](http://www.facebook.com/MorenoValleySierraClub) (you do not have to sign up to view our FB page.) Please contact our outings chair Theresa Carson at [tlcarson01@gmail.com](mailto:tlcarson01@gmail.com) or (951) 660-7246 if you have questions regarding our group outings and schedule.

The Riverside County Planning Department held an advisory committee meeting on August 1 on the county's General Plan Update (GPU). The Lakeview Mountains Policy Area, which would designate the land uses for the lands next to the San Jacinto Wildlife Area, was approved. The county's goal is to have the draft environmental impact report (DEIR) for the GPU out for public review by early 2014. The GPU will impact all of us who live in Riverside County as the plan will lay out land use designations for years to come, address sprawl, global climate change, noise and open space issues. Land use designations will significantly impact the San Jacinto Wildlife Area and also open up valuable agricultural lands for development. Please

contact Frank Coyle ([FCOYLE@rctlma.org](mailto:FCOYLE@rctlma.org)) and Kristi Lovelady ([klovelad@rctlma.org](mailto:klovelad@rctlma.org)), Riverside County Planning, 4080 Lemon Street, 12<sup>th</sup> Floor, Riverside, CA 92501-3634 at (951) 955-0781, and request a copy of the draft EIR for the GPU and all other documents and notices of all meetings pertaining to it.

The Moreno Valley Recreational Trails Board has scheduled a "Hike to Lake Perris" (Moderate—7.2 miles roundtrip) on Saturday, September 28, 2013. Meet at 7:30 a.m., Ridgecrest Elementary School, 28500 John F. Kennedy Drive, Moreno Valley (parking lot in front of the school. "Hike to Box Springs M Trail" (Difficult) is on October 26 (updated date); for more information: [http://www.moreno-valley.ca.us/resident\\_services/park\\_rec/trails.shtml](http://www.moreno-valley.ca.us/resident_services/park_rec/trails.shtml) Call (951) 413-3702 to verify all information for both walks.

Lake Perris State Recreation (LPSRA) Area is open seven days a week from 6:00 a.m. to 10:00 p.m. Please check their web page ([http://www.parks.ca.gov/?page\\_id=651](http://www.parks.ca.gov/?page_id=651)) for entrance fee information and hours of operation. Information on the \$20 Limited Use Golden Bear passes (for those age 62 and older) can be found at: [http://www.parks.ca.gov/?page\\_id=23887](http://www.parks.ca.gov/?page_id=23887) The pass expires on December 31.

Bequests are a good way of helping the local Sierra Club efforts. It is important to specify the Moreno Valley Group and/or our San Gorgonio Chapter to make sure the money is used locally. If you only put Sierra Club or Sierra Club Foundation, your bequest will be shared all over the United States instead of specifically in our Group or Chapter. Please consider making a bequest because any amount will help the environment. For more information please look at: <http://www.sierraclub.org/giftplanning/bequests/>

The group has volunteer opportunities for those who may want to donate their time. Please contact us at [movalleygroup@yahoo.com](mailto:movalleygroup@yahoo.com) or call Ann McKibben at (951) 924-8150 or George Hague at (951) 924-0816.

## Mountains Group

By Dave Barrie, Chair

Dear Mountains Group Sierra Club members,

Hopefully all of you know that we are one of nine non-profit groups who volunteer at the Mountain Thrift Shoppe in Blue Jay to earn money for our Group. Over the past few years several of our volunteers have moved away, and we have not been able to replace them, to the point that we are now really short of help.

If you have a few free hours a week and would like to help at the Shoppe, please contact Heather Sargeant at 909-336-2836 or [heathercsao@aol.com](mailto:heathercsao@aol.com)

The Thrift Shoppe schedule is every day of the week from 10 am to 4 pm except Sunday which is noon to 4 pm. There are

morning and afternoon shifts: 10am - 1 pm or 1 - 4 pm, except Sunday which is just one shift.

Heather works all day on Mondays and on Wednesday afternoons, and the Sierra Club is in charge of sorting and pricing children's clothes. Help is also needed in other areas of the Shoppe, or you could be trained on the cash register. If you can spare three hours a week, but are only available on days other than



Monday or Wednesday, we could find out if there are openings available. You need to belong either to the Sierra Club or one of the other eight organizations to work there. If you can't be available every week, you could be a substitute, to come in when needed.

Everyone who works at the Thrift Shoppe is a volunteer, and the Mountains Group gets paid every six months according to the number of hours each group has worked.

The money earned must be spent in our local Rim of the World school district. So in fact we are working to support all nine groups. Some of the money the Sierra Club receives goes to a Rim High School scholarship, some to the Children's Forest, and it has been invaluable to use for litigation purposes.

Contact Heather for more information or to volunteer to help. Please consider helping in this way and we hope to hear from you soon.

If you are unable to volunteer, please support the Thrift Shoppe with your donations, and also come in and shop. It is amazing what treasures you may find!



# Calendar of Outings, Meetings, and Other Events

## SEPTEMBER/OCTOBER 2013

The outings calendar is on the Internet at <http://sangorgonio.sierraclub.org>

### CALENDAR SUBMISSIONS

**DEADLINE:** Items for the November/December 2013 Calendar are due by October 1, 2013.

**FORMAT** items similar to those below. Send items electronically if possible.

**OUTINGS:** Send outings write-ups to your group or section Outings Chair.

**MEETINGS** & other events: Send electronically to Ladd Seekins at <ladd.g.seekins@gmail.com>

### GENERAL INFORMATION/RULES/DISCLAIMERS

All Outings Leaders are Chapter Certified Leaders having appropriate Outings Training Courses, First Aid Courses, and experience for the Outings they lead. Leaders may exclude individuals from participation if they believe they may not be qualified. Non-Sierra Club members may join outings unless otherwise stated in the write-up. All participants agree to abide by the Leader's rules. Participants should **CALL THE LEADER AHEAD TO SIGN-UP**. Many Outings specify items to be carried by **EACH** participant. Do not attend Outings without the specified items unless you have first discussed it with the leader. Often the **TEN ESSENTIALS** are required. They are: 1) Map 2) Compass 3) Flashlight 4) Knife 5) Windproof/waterproof matches in waterproof case 6) Fire starter 7) First aid kit 8) Extra food and water for emergency use only 9) Extra clothing including rainwear 10) Sun protection including sunscreen/sunglasses/hat. Carpooling is encouraged, but solely the responsibility of individual participants. The Sierra Club and its leaders may facilitate carpooling, however they will not assign. Drivers should have adequate insurance coverage and their vehicle should have no safety defects. For Sierra Club facilitated carpooling, drivers agree to not consume any alcoholic beverages. It is customary for riders to share expenses with the driver. Five cents per mile per person might be a reasonable suggested amount. The above information applies to Sierra Club Outings only. Non-Sierra Club activities may be listed in a separate location as a courtesy. Please be sure to read the disclaimer that accompanies these activities.

**\*\*SPECIAL NOTICE** – Most outings occurring in the San Bernardino, Angeles, Cleveland, or Los Padres National Forests require a Forest Service permit for each vehicle (Adventure Pass). These Outings will be preceded by \*\* in the listings that follow. Be sure to contact the leader regarding permits. The permits cost \$30 per year or \$5 per day; however they may not be obtainable the day of your Outing. If you arrive at the meeting place without making arrangements with the leader and you don't have a permit or find a ride in a vehicle with a permit, you will not be able to attend the outing. You are expected to share the cost of the daily permits equally among everyone in the vehicle or a suggested \$.50 contribution from everyone for annual permits (above normal mileage contribution). America The Beautiful Interagency Passes may be used in lieu of Adventure Pass.

**CARPOOLING POLICY** – In the interests of facilitating the logistics of some outings, it is customary that participants make carpooling arrangements. The Sierra Club does not have insurance for carpooling arrangements and assumes no liability for them. Carpooling, ride sharing, or anything similar is strictly a private arrangement among the participants. Participants assume the risks associated with this travel.

**LIABILITY WAIVER** – In order to participate on one of the Sierra Club's outings, you will need to sign a liability waiver. If you would like to read a copy of the waiver prior to the outing, please see <http://www.sierraclub.org/outings/chapter/forms/> or call 415-977-5630. You will also find the entire waiver printed in the Outings Section of the *Palm and Pine*.

### Sign-In Sheet & Acknowledgment of Outing Member Responsibility, Express Assumption of Risk, & Release of Liability

I understand that during my participation in this Sierra Club Outing, I may be exposed to a variety of hazards & risks, foreseen or unforeseen, which are inherent in each Outing & cannot be eliminated without destroying the unique character of the Outing. These inherent risks include, but are not limited to, the dangers of serious personal injury, property damage, & death ("Injuries & Damages") from exposure to the hazards of travel & the Sierra Club has not tried to contradict or minimize my understanding of these risks. I know that Injuries & Damages can occur by natural causes or activities of other persons, animals, trip members, trip leaders & assistants or third parties, either as a result of negligence or because of other reasons. I understand that risks of such Injuries & Damages are involved in adventure travel such as Sierra Club Outings & I appreciate that I may have to exercise extra care for my own person & for others around me in the face of such hazards. I further understand that on this Outing there may not be rescue or medical facilities or expertise necessary to deal with the Injuries & Damages to which I may be exposed.

In consideration for my acceptance as a participant on this Outing, & the services & amenities to be provided by the Sierra Club in connection with the Outing, I confirm my understanding that:

I have read any rules & conditions applicable to the Outing made available to me;  
I will pay any costs & fees for the Outing; & I acknowledge my participation is at the discretion of the leader.

The Outing begins & ends at the location where the Outing officially commences with leader & participants in attendance, as designated by the Sierra Club ("Trailhead"). The Outing does not include carpooling, transportation, or transit to & from the Trailhead, & I am personally responsible for all risks associated with this travel. This does not apply to transportation provided by the Sierra Club after the commencement & before the end of the Outing.

If I decide to leave early & not to complete the Outing as planned, I assume all risks inherent in my decision to leave & waive all liability against the Sierra Club arising from that decision. Likewise, if the leader has concluded the Outing, & I decide to go forward without the leader, I assume all risks inherent in my decision to go forward & waive all liability against the Sierra Club arising from that decision.

This Agreement is intended to be as broad & inclusive as is permitted by law. If any provision or any part of any provision of this Agreement is held to be invalid or legally unenforceable for any reason, the remainder of this Agreement shall not be affected thereby & shall remain valid & fully enforceable.

To the fullest extent allowed by law, I agree to WAIVE, DISCHARGE CLAIMS, & RELEASE FROM LIABILITY, & TO INDEMNIFY & HOLD HARMLESS the Sierra Club, its officers, directors, employees, agents, & leaders from any & all liability on account of, or in any way resulting from Injuries & Damages, even if caused by negligence of the Sierra Club its officers, directors, employees, agents, & leaders, in any way connected with this Outing. I understand & intend that this assumption of risk & release is binding upon my heirs, executors, administrators & assigns, & includes any minors accompanying me on the Outing.

I have read this document in its entirety & I freely & voluntarily assume all risks of such Injuries & Damages & notwithstanding such risks, I agree to participate in the Outing.

Note: If the participant is a minor, the minor's guardian must sign on the minor's behalf.

### RECURRING MONTHLY MEETINGS

(LOOK IN CALENDAR FOR DATES)

**(1ST MON) 6:00 PM SB MOUNTAINS GROUP EXCOM MEETING**  
Alpine Conference Room 27236 Blue Jay Mall on Feb 4, Apr 1, May 6, Oct 7, Nov 4. INFO: DAVE BARRIE, (909) 337-0313. SB MOUNTAINS GROUP

**(1ST TUE) 7:30 PM SAN GORGONIO CHAPTER MEETING**  
PROGRAM: See front-page notice. PLACE: San Bernardino County Museum, 2024 Orange Tree Lane, Redlands. DIRECTIONS: Exit I-10 at California St. INFO: LADD SEEKINS <ladd.g.seekins@gmail.com>. (909) 800-3911 CHAPTER

**(1ST WED) 6:30 PM BIG BEAR GROUP EXCOM MEETING**  
The meeting place rotates. INFO: ED WALLCE 909-584-9407. BIG BEAR GROUP

**(1ST THU) LOS SERRANOS GROUP EXCOM MEETING**  
Odd-numbered months only (Jan, Mar, May, Jul, Sep, & Nov). There is no meeting in July 2013 because of conflict with the Independence Day holiday. PLACE: For meeting time & place, call MARY ANN RUIZ (909) 815-9379, <ruizmaryann@gmail.com> LOS SERRANOS GROUP

**(2ND MON) 7:00 PM SB MOUNTAINS GROUP MEETING**  
Monthly program meeting. No meeting in August or December. PLACE: St. Richard's Episcopal Church, 28708 Highway 18, Sky Forest. INFO: DAVE BARRIE, (909) 337-0313. SB MOUNTAINS GROUP

**(2ND TUE) 7:00 PM CHAPTER CONSERVATION COMMITTEE MEETING**  
Monthly meeting or conference call. Take part in working on important conservation issues. Please participate: we need your help! INFO: KIM FLOYD, Conservation Chair, <kimffloyd@fastmail.fm> (760) 249-5385. CHAPTER

**(2ND WED) 7:00 PM MOJAVE GROUP MEETING**  
Monthly meeting except for July & August. PLACE: Sterling Inn, Regency Room, 17738 Francesca, Victorville. (One block north of Bear Valley Rd. on Ridgecrest.) Enter on Ridgecrest side of the building. INFO: JENNY WILDER 760-220-0730 jensoasis@aol.com MOJAVE GROUP

**(2ND THU) 6:30 PM SANTA MARGARITA GROUP MEETING**  
Monthly meeting. The public is welcome. PLACE: Rancho California Water District Headquarters, 42135 Winchester Rd., Temecula 92589. INFO: JIM MITCHELL (951) 506-9607 <sierraclubsmg@gmail.com> SANTA MARGARITA GROUP

**(3RD TUE) 6:00 PM SAN JACINTO VALLEY (HEMET) CONS COMMITTEE MEETING**  
Monthly conservation meeting. The public is welcome. LOCATION: Call or email for location & directions. CONTACT: SHAULI ROSEN-RAGER, (951) 767-2203, <gardens@netzon.net> SAN JACINTO VALLEY (HEMET) CONSERVATION COMMITTEE

**(3RD TUE) 7:00 PM LOS SERRANOS GROUP MEETING**  
Monthly meeting except August, The public is welcome. Refreshments will be served. PLACE: Educational Building, Upland Presbyterian Church, Euclid Ave. at 11th. The September 2013 meeting will be held at Rancho Santa Ana Botanic Gardens in Claremont and not at the church. INFO: MARY ANN RUIZ, (909) 815-9379, <ruizmaryann@gmail.com> LOS SERRANOS GROUP

**(3RD THU) 6:30 PM BIG BEAR GROUP MEETING**  
Monthly meeting except December. INFO: For current program information, please visit the Group web site [www.sierraclubbigbeargroup.org](http://www.sierraclubbigbeargroup.org). PLACE: Big Bear Discovery Center, 40971 North Shore Dr. (Hwy. 38), Fawnskin. CONTACT: 909-584-9407. BIG BEAR GROUP

**(4TH TUE) 7:00 PM SAN GORGONIO CHAPTER EXCOM MEETING**  
Chapter governance meeting. PLACE: The San Gorgonio Chapter office, 4079 Mission Inn Ave., Riverside. INFO: RICK ESTES (951) 314-3328 <scsangor@gmail.com>. CHAPTER

### WEEKLY RECURRING FITNESS ACTIVITIES

Please read "LIABILITY WAIVER" preceding these listings

**MON 6:00 PM RIVERSIDE MT. RUBIDOUX ONE HOUR FITNESS WALK**  
MEET: Ninth Street entrance to Mt. Rubidoux. INFO: Judy Smith 951-369-5117. SAN GORGONIO CHAPTER

**MON 7:00 PM MOJAVE GROUP CONDITIONING HIKE HIKE**  
Please join me for a 3 to 6 mile Conditioning hike around Jess Ranch. Meet at the Victor Valley Museum in Apple Valley on Apple Valley Road at 7 PM. Bring flash lights & water. Wear layered clothing and good hiking shoes. For questionable weather please call LEADER: MELODY NICHOLS (760) 963-4430. MOJAVE GROUP

**WED 7:00 PM MOVAVE GROUP CONDITIONING WALK WALK**  
Meet: Victor Valley Museum every Wednesday except second Wednesday of each month. Walks are paced for participants. Enjoy the evening air, river breeze, sunsets, stars & moon on a 3-mile walk around Jess Ranch & along the Mojave River. LEADERS: BILL SPRENG bspreng@verizon.net 760-951-4520 & JENNY WILDER jensoasis@aol.com 760-220-0730 MOJAVE GROUP

**FRI 7:00 PM MOJAVE GROUP CONDITIONING HIKE HIKE**  
Please join me for a 3 to 6 mile Conditioning hike around Jess Ranch. Meet at the Victor Valley Museum in Apple Valley on Apple Valley Road at 7PM. Bring flashlights & water. Wear layered clothing and good hiking shoes. For questionable weather please call LEADER: MELODY NICHOLS (760) 963-4430. MOJAVE GROUP

Continued on Page 6 >>>



Calendar . . . Continued from Page 5

**AUGUST 19 – AUGUST 25**

Please read **"LIABILITY WAIVER"** preceding these listings  
(Also refer to Weekly reoccurring Outings and Activities)

**AUG 19 (MON) 7:00 AM LAKE PEAK AND THE 10,000 FT RIDGE HIKE**  
This hike will take us from the Fish Creek Trail Head in the San Gorgonio Wilderness 6 miles to the summit of Lake Peak from there we will explore the remote 10,000 Ft. ridge. This is a moderate to strenuous hike which will cover approximately 15 miles from start to finish. BRING: Ten-essentials, layered clothing, 4 liters of water, lunch, sunscreen, sunglasses, and hat. Space is limited. For more information call hike leader Ed Wallace at 909 584 9407 or ednjeanne@charter.net  
BIG BEAR GROUP

**\*\*AUG 19 (Mon) 7:00 PM SB MTS MOUNTAIN MOONLIGHT MEANDER**  
Join us for our 3<sup>rd</sup> annual moonlit stroll (and night-time picnic) in the forest. An easy route, we'll not be setting any speed records here; just a leisurely and safe adventure in the "dark" (who knows what we might see?). Afterwards, we'll share a small informal potluck to celebrate all making it back together. (Rain, fog or fire will cancel.) BRING: weather appropriate clothes and a flashlight (preferably red lights to preserve our night vision). MEET: Current plan for location is the Heap's Peak Arboretum, but that may change, so please do check in to confirm. CONTACT LEADER: STEVEN FARRELL Call for important details and to verify where we'll meet: 661-449-2867 or <mr\_sqf@yahoo.com>. Adventure Pass required.  
MOUNTAINS GROUP

**\*\*AUG 21 (WED) 9:00 AM GRAYS PEAK TH TO HANNAH FLAT CG HIKE**  
This is a moderate to difficult 9-mile round-trip hike with an 800-foot elevation gain. The trailhead is located on the west side of Highway 38, about 1/2 mile west of Fawnskin, across from the Groat Bay picnic area. A National Forest Adventure Pass is required for parking. Bring 2 quarts of water, snacks, hat, sunscreen layered clothing and sturdy hiking boots. We will meet at the trailhead where adventure passes are required. For more information call Dick Banks at 909-866-9232.  
BIG BEAR GROUP

**\*\*AUG 25 (SUN) 3:00 PM EXPLORATION TRAIL HIKE AND POTLUCK**  
This is a 3-hour, 6 to 7 mile hike with about 1000' of elevation gain in the Running Springs area. We'll hike about 1.5 hours downhill and then retrace our steps uphill to develop an appetite and return to our cars where we'll enjoy a potluck dinner at the picnic tables in the Children's Forest. (The entire trail is 9 miles but we won't be hiking to the bottom this time.) Restrooms are available at the Children's Forest. RATING: Moderate. MEET: Upper terminus of the Exploration Trail, located 4 miles up Keller Peak Road in Running Springs just below the Children's Forest. BRING: Ten essentials, sturdy hiking boots, 2 liters of water, hat, sunglasses, and layered clothing as we'll be picnicking into the early evening. Adventure Passes are required to park at the trailhead. Please let me know what food or drink you will bring to share at the potluck. CALL: ROBERTA DARROW, Hiking Leader at (909) 362-2531 or kitchenchic@mac.com  
BIG BEAR GROUP

**AUGUST 26 – SEPTEMBER 1**

Please read **"LIABILITY WAIVER"** preceding these listings  
(Also refer to Weekly reoccurring Outings and Activities)

**AUG 27 (TUE) 7:00 PM SAN GORGONIO CHAPTER EXCOM MEETING**  
Chapter governance meeting. PLACE: The San Gorgonio Chapter office, 4079 Mission Inn Ave., Riverside. INFO: RICK ESTES (951) 314-3328 <scsangor@gmail.com>. CHAPTER

**\*\*AUG 28 (WED) 8:00 AM NO # ROAD FROM 2N09 TO 3N12 HIKE**  
The trail head starts in the Holcomb Valley Forest at the junction of 2N09 and No # Road. It meanders west to 3N12 for approximately 3.0 miles. We will then turn-around and return to 2N09 to complete the hike, a total of 6.0 miles. This hike has very little elevation change. Rated: This will be a slow to moderate paced hike, and is rated easy in difficult. Hikers are to meet at the Cougar Crest Trail parking lot at 8:00 A.M. An Adventure Pass is required for parking. Bring two-liters of water, snack/lunch, sunscreen, sunglasses, hat, and good hiking shoes. To register please call Ed Caliendo, Hiking Leader at (909) 878-3813 or email at dogs111@msn.com  
BIG BEAR GROUP

**\*\*AUG 31 (SAT) 8:00 AM SOUTHFORK TO DOLLAR LAKE HIKE**  
We will be hiking through the San Gorgonio Wilderness starting at the Southfork Trail head (6,880') and climbing 2,340' over a 6.9 mile distance before reach Dollar Lake ( 9,220') where we will eat lunch, take in the beautiful views before returning to our vehicles. The total distance of this hike is estimated at 13.8 miles. RATING: Strenuous MEET: We will meet at the Southfork trailhead parking area located off of Hwy 38 on Jenks Lake Road. BRING: Ten-essentials, layered clothing, 4 liters of water, lunch, sunscreen, sunglasses, hat and trekking poles. CONFIRMATION: There is a limit of 12 participants so please call Hiking Leader, Ed Caliendo (909) 878-3813 or email at dogs111@msn.com.  
BIG BEAR GROUP

**SEPTEMBER 2 – SEPTEMBER 8**

Please read **"LIABILITY WAIVER"** preceding these listings  
(Also refer to Weekly reoccurring Outings and Activities)

**SEP 3 (TUE) 7:30 PM SAN GORGONIO CHAPTER MEETING**  
PROGRAM: See front-page notice. PLACE: San Bernardino County Museum, 2024 Orange Tree Lane, Redlands. DIRECTIONS: Exit I-10 at California St. INFO: LADD SEEKINS <ladd.g.seekins@gmail.com>. (909) 800-3911  
CHAPTER

**SEP 4 (WED) 6:30 PM BIG BEAR GROUP EXCOM MEETING**  
The meeting place rotates. INFO: ED WALLCE 909-584-9407.  
BIG BEAR GROUP

**SEP7 (SAT) 9:00 AM SB MTS, CHILDREN'S FOREST AREA ECOLOGY WALK**  
The Sierra Club will lead one of 3 alternative hikes planned for the Mountaintop Hiking Club's annual Picnic. Our hike will be an exploratory ecology walk and discussion led by Dave Ficke. We will travel by car from the Children's Forest parking area, high up on Keller Peak Road, about a mile to the start of the hike. Distance: 3 miles RT with moderate elevation gain. We will enjoy frequent stops. Join us, and then be sure to attend the Mountaintop Hiking Club's picnic party afterward. For details about the picnic that follows (a non-Sierra Club event) go to: http://www.mountaintophiking.com/hikes.html INTERPRETER AND GUIDE, DAVE FICKE, 909-336-4706. BRING: snack, water, extra clothing WEAR: boots, sun hats. CONTACT LEADER: STEVE FARRELL, 661-449-2867 <mr\_sqf@yahoo.com> for additional trail information and TO CONFIRM meeting place.  
MOUNTAINS GROUP

**\*\*SEP7 (SAT) 8:15 AM ONYX SUMMIT TO CUSHENBURY PASS HIKE**

This is Hike #7 of the Pacific Crest Trail, Section C Recognition Program. This hike is Onyx Summit to Highway 18 and Baldwin Lake Pass and Cushenbury Pass) Those hikers completing all nine segments will receive a special recognition patch. This hike is a 14 mile through-hike. RATING: Strenuous. Contact Hike Leader for meeting place and additional information. Adventure Pass will be required for parking at the trailhead. CALL: Jim Seifert at (760) 694-5370 or email ironmany2k@hotmail.com  
BIG BEAR GROUP

**SEPTEMBER 9 – SEPTEMBER 15**

Please read **"LIABILITY WAIVER"** preceding these listings  
(Also refer to Weekly reoccurring Outings and Activities)

**\*\*SEP9 (MON) 8:00 AM CACTUS FLATS TO HORSE THIEF FLAT HIKE**

Moderate to strenuous 8 mile hike on old mining roads. Good views of the Bighorn Mountain Wilderness. We will meet at the Von's parking lot in Big Bear Lake at 8:00 AM and at Cactus Flats at 8:30 AM. Adventure pass required. Please call hike leader Ed Wallace (909 584 9407) or email at ednjeanne@charter.net to confirm.  
BIG BEAR GROUP

**SEP 9 (MON) 7:00 PM SB MOUNTAINS GROUP MEETING**

Monthly program meeting. No meeting in August or December. PLACE: St. Richard's Episcopal Church, 28708 Highway 18, Sky Forest. INFO: DAVE BARRIE, (909) 337-0313.  
SB MOUNTAINS GROUP

**SEP 10 (TUE) 7:00 PM CHAPTER CONSERVATION COMMITTEE MEETING**

Monthly meeting or conference call. Take part in working on important conservation issues. Please participate: we need your help! INFO: KIM FLOYD, Conservation Chair, <kimffloyd@fastmail.fm> (760) 249-5385.  
CHAPTER

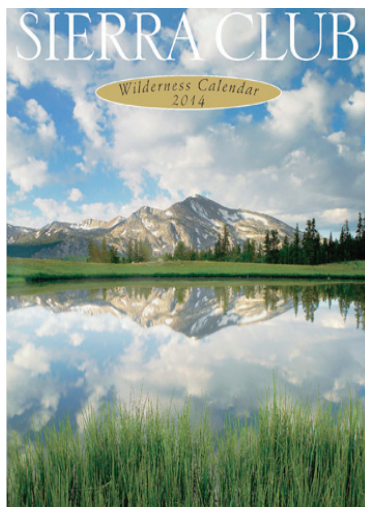
**SEP 11 (WED) 7:00 PM MOJAVE GROUP MEETING**

Monthly meeting except for July & August. PLACE: Sterling Inn, Regency Room, 17738 Francesca, Victorville. (One block north of Bear Valley Rd. on Ridgecrest.) Enter on Ridgecrest side of the building. Showing of Part 1 of A FIERCE GREEN FIRE: The Battle for a Living Planet is the first big-picture exploration of the environmental movement – grassroots and global activism spanning fifty years from conservation to climate change. Directed and written by Mark Kitchell, Academy Award-nominated director of Berkeley in the Sixties, and narrated by Robert Redford, Ashley Judd, Van Jones, Isabel Allende and Meryl Streep, the film premiered at Sundance

Continued on Page 7 >>>

**SIERRA CLUB  
2014 CALENDARS**

**Sierra Club 2014 Wilderness  
Wall Calendar**  
Spiral bound, month-by-month  
format, featuring 12 majestic North  
American landscapes.



**Sierra Club 2014  
Engagement Calendar**  
Week-by-week format, featuring  
57 spectacular photographs and  
"wire-o" binding.

**Order Form**

Save up to 30% off the list price. Support local conservation efforts.  
Titles may be combined for quantity pricing.

Title	1- 4 price	5- 9 price	10+ price	Quantity	Price	Total
Wilderness Wall Calendar	\$12.50	\$11.50	\$10.50	_____	_____	_____
Engagement Calendar	\$13.50	\$12.50	\$11.50	_____	_____	_____
					Subtotal	_____
					Shipping*	_____

Make checks payable to **Sierra Club** and mail this coupon to:  
**Sierra Club Calendars, 4079 Mission Inn Ave., Riverside, CA 92501**  
(Cost includes all applicable sales taxes computed to the nearest mil)

Name \_\_\_\_\_  
Phone \_\_\_\_\_  
Address \_\_\_\_\_  
City, State, Zip code \_\_\_\_\_

**Total** \_\_\_\_\_



*Calendar . . . Continued from Page 6*

Film Festival 2012, has won acclaim at festivals around the world, and in 2013 begins theatrical release as well as educational distribution and use by environmental groups and grassroots activists. INFO: JENNY WILDER 760-220-0730 jensoasis@aol.com MOJAVE GROUP

**\*\*SEP 11 (WED) 9:00 AM CITY CREEK PEAK – HIGHLAND AREA HIKE**  
9:00 AM, moderate to difficult 10-mile hike along City Creek with a 1400' elevation gain. We will meet at the City Creek Ranger Station parking lot on Hwy 330, between Running Springs and Highland. For those coming from the Big Bear area, we will meet at the Performing Arts Center at 8:00 AM and carpool to the ranger station. Bring sturdy boots, water, lunch and clothing appropriate for the weather. For details call Dick Banks at 909-866-923 BIG BEAR GROUP

**SEP 11 (WED) 9:00 AM JOHNSON PASTURE HIKE**  
This "Walk in the Pasture" is a pleasant 4 mile R/T loop stroll. It has a moderate rating with only a 800' elevation gain. Very enjoyable vistas will greet you along the of this 180 acre plot that the city of Claremont wisely purchased in 2006, thus saving it from development. BRING: water, hiking sticks, sturdy boots and layered clothing. MEET: Please call/e-mail LEADER: JEFF WARHOL (909) 985-7686 jmwandjjw@hotmail.com prior to scheduled date for details. Rain cancels. LOS SERRANOS GROUP

**SEP 12 (THU) 6:30 PM SANTA MARGARITA GROUP MEETING**  
Monthly meeting. The public is welcome. PLACE: Rancho California Water District Headquarters, 42135 Winchester Rd., Temecula 92589. INFO: JIM MITCHELL(951) 506-9607 <sierraclubsmg@gmail.com> SANTA MARGARITA GROUP

**\*\*SEP 14 (SAT) 8:00 AM BERTHA PEAK VIA COUGAR CREST TRAIL HIKE**  
This is a "Peaks" of Big Bear hike. Those achieving all five peaks overlooking the Big Bear Valley will be given a commemorative patch. This is a 7 mile hike, 1,400 elevation gain. RATING: moderate/ strenuous MEET: Hikers are to meet at Cougar Crest Trail Head located 100 yards west of the Big Bear Discovery Center. An Adventure Pass is required for parking. BRING: 2.5 liters of water, snack/lunch, sunscreen, sunglasses, hat, and good hiking shoes. CALL: To register please contact Jim Seifert, Hiking Leader at (760)694-5370 or email ironmany2k@hotmail.com BIG BEAR GROUP

**SEP 14-15 (SAT-SUN) INDIAN WELLS CANYON SERVICE AND HIKE**  
Indian Wells Canyon, north of Ridgecrest and adjacent to the Owens Peak Wilderness, has been impacted by erosion and by illegal ORV trespass. On Saturday, our group will assist BLM Wilderness Resource Specialist Marty Dickes putting up barriers, concealing illegal routes, and placing signs. If the work has been completed adequately then Sunday will be used for a hike up into the Wilderness and perhaps to Owens Peak itself. The ponderosa forest and chaparral should provide a delightful diversion in the early fall. Leader: Craig Deutsche, craig.deutsche@gmail.com, 310-477-6670, Contact: Tom Budlong, TomBudlong@roadrunner.com, 310-476-1731. CNRCC DESERT COMMITTEE

**SEP 14-15 (SAT-SUN) BRISTLECONE PINES CARCAMP**  
Come with us to the beautiful White Mtns to camp, hike and just relax. On Sat, we'll hike the Ancient Bristlecone Pine Forest on a moderate 5 mi rt interpretive trail, followed by a picnic lunch and a short optional hike to a nearby old mining cabin. Back at camp, we'll enjoy Happy Hour, a potluck feast and a campfire. Sunday pack up and head home. Group size strictly limited. Send \$8 per person (check payable to Lygeia Gerard), 2 large SASE, H&W phones, email address, rideshare info to Ldr: Lygeia Gerard, P.O. Box 721039, Pinon Hills, CA 92372, 760-868-2179. CNRCC DESERT COMMITTEE

**SEPTEMBER 16 – SEPTEMBER 22**

*Please read "LIABILITY WAIVER" preceding these listings  
(Also refer to Weekly reoccurring Outings and Activities)*

**SEP 17 (TUE) 6:00 PM SAN JACINTO VALLEY (HEMET) CONS COM MEETING**  
Monthly conservation meeting. The public is welcome. LOCATION: Call or email for location & directions. CONTACT: SHAULI ROSEN-RAGER, (951) 767-2203, <gardens@netzon.net> SAN JACINTO VALLEY (HEMET) CONSER. COMMITTEE

**SEP 17 (TUE) 7:00 PM LOS SERRANOS GROUP MEETING**  
Enjoy Rancho Santa Ana Botanic Garden(Claremont) in the evening, at our September group meeting. Bring an appetizer and we will sample some sustainably produced wines. Sierra Club members Brian and Janice Elliott will present a program about their recent 14 day mobile tent camping safari in northern Botswana and an additional three days in the Victoria Falls area of Zambia. The public is welcome, with no entrance fee but donations are encouraged to offset the cost of RSABG facilities. Entry to Garden beginning at 5:30 pm INFO: MARY ANN RUIZ, (909) 815-9379, <ruizmaryann@gmail.com> LOS SERRANOS GROUP

**SEP 18 (WED) 6:00 PM SYCAMORE CANYON HIKE**  
Approximate 2-hour easy hike in Sycamore Canyon. This will be a leisurely paced hike/walk, although there are some steep sections. Full moon is September 19. We start promptly at 6:00. BRING: water and sturdy shoes. MEET: in the Sycamore Canyon parking lot on the south side of Central Ave. between Canyon Crest Drive and the 215/60 Freeway. Rain cancels. INFO and LEADER: THERESA CARSON (951) 660-7246 or tcarson01@gmail.com. MORENO VALLEY GROUP

**\*\*SEP 18 (WED) JACOBY CANYON TO LUCKY BALDWIN GOLD MINE HIKE**  
9:00 AM, moderate to difficult 7-mile round-trip hike with a 1200' elevation gain. We will meet at Vons in Big Bear Lake and carpool to the trailhead. Those coming from the Lucerne Valley area may want to meet us at the trailhead (6000' elevation marker on Hwy 18) at 9:20 or so. Bring weather appropriate clothing, sturdy boots, water and lunch. For details call Dick Banks at 909-866-9232. BIG BEAR GROUP

**SEP 19 (THU) 6:30 PM BIG BEAR GROUP MEETING**  
Monthly meeting except December. INFO: For current program information, please visit the Group web site www.sierraclubbigbeargroup.org. PLACE: Big Bear Discovery Center, 40971 North Shore Dr. (Hwy. 38), Fawnskin. CONTACT: 909-584-9407. BIG BEAR GROUP

**\*\*SEP 21 (SAT) 8:00 AM ONYX SUMMIT TO MISSION SPRING CAMP HIKE**  
This is Hike #8 of the Pacific Crest Trail, Section C Recognition Program. Those hikers completing all nine segments will receive a special recognition patch. This hike is a 12.5 mile downhill through-hike. RATING: Strenuous due to the distance MEET: Those hikers from Apple Valley/ Yucca Valley should meet at Onyx Summit 8:00 A.M. For those hikers traveling from San Bernardino/ Highland should meet at Heart Bar exit off of Hwy 38 at 6:00 a.m. Those individuals living in the Big Bear area should meet at Onyx Summit at 8:00 a.m.



**One Environment . . .  
One Simple Way to Care for it.**

Join us in protecting the future by doing your share today.

How can you choose between the eagle and the buffalo? Between the elephants and the whales?

Between drinking clean water and breathing clean air? Between parks and beaches? How can you choose? Would there be a right choice?

Now there's a way to help not just one, but all these things. It's called Earth Share of California – the world's leading environmental and conservation charities working together.

Through Earth Share of California you can make a one-time gift, or a payroll deduction donation that helps every day to preserve and protect the environment – locally, regionally, nationally, and globally.

Earth Share is not part of your employer's workplace giving campaign? We'd like to do something about that. Call Ladd Seekins at 909-888-0161 weekdays or 909-825-4427 evenings and weekends. Address e-mail to iwfladd@eee.org.

BRING: ten essentials, layered clothing, and sun protection, a minimum of three liters of water, lunch, sunglasses, hat and good hiking shoes. CALL: For reservations, contact Hiking Leader Roberta Darrow, at (909) 362-2531 or Co-Leader, Ed Caliendo, at (909) 878-3813 or dogs111@msn.com. BIG BEAR GROUP

**SEP 21 (SAT) 7:30 AM OAK GLEN HIKE – JUNIPER FLATS AREA HIKE**  
The lovely hike to a small Oak Glen in Arrastre Canyon is about 5-6 miles round trip. The hike includes visiting unique plant assemblages, clusters of huge boulders and lovely views of the Victor Valley. Wear sturdy hiking boots, layered clothing, sunscreen and hat. Bring 2-3 quarts of water, lunch/snacks and a hiking stick. Don't forget the camera and binoculars! Meet at the Victor Valley Museum on Apple Valley Road at 7:30am. High clearance vehicle is recommended to get to the trailhead. For more information and to sign up, contact JennyWilder JensOasis@aol.com 760 220 0730. MOJAVE GROUP

**SEP 21 (SAT) 7:30 AM OAK GLEN HIKE – JUNIPER FLATS AREA HIKE**  
The lovely hike to a small Oak Glen in Arrastre Canyon is about 5-6 miles round trip. The hike includes visiting unique plant assemblages, clusters of huge boulders and lovely views of the Victor Valley. Wear sturdy hiking boots, layered clothing, sunscreen and hat. Bring 2-3 quarts of water, lunch/snacks and a hiking stick. Don't forget the camera and binoculars! Meet at the Victor Valley Museum on Apple Valley Road at 7:30am. High clearance vehicle is recommended to get to the trailhead. For more information and to sign up, contact JennyWilder JensOasis@aol.com 760 220 0730. MOJAVE GROUP

**SEP 21 (SAT) 6:30 AM CUCAMONGA PEAK HIKE**  
This will be a strenuous hike up Ice House Canyon into the Cucamonga Wilderness to the top of Cucamonga Peak (elevation 8859 ft), 12.5 miles round trip with 3900 ft. elevation gain. The trail follows the creek for the first 1 1/2 miles under a canopy of oak, alder, cedar, and pine. Scenic view in all directions from the top of Cucamonga Peak. Rain cancels. Adventure Pass required at trailhead. BRING: sturdy boots, 3 liters water, lunch, sunscreen, layer clothing appropriate for the weather. Contact John St. Clair prior to scheduled date for carpooling and meeting place. LEADER: John St. Clair, <john@stclairs.us>, 909-983-8501 LOS SERRANOS GROUP

**SEP 22 (SUN) 12:00-3:00 PM SANTA ROSA PLATEAU/MONUMENT HILL HIKE**  
Let's meet at the Visitor's Center at the Santa Rosa Plateau where the day use fee is \$3. From there, we travel through lovely meadows with large oaks and then uphill to the highest spot at the plateau, Monument Hill. We will be rewarded with some spectacular views of the plateau. On a clear day, we can see the ocean! This 3 hour moderate hike will cover 5.2 miles. Families are welcome that have some hiking experience at this distance. Bring the ten essentials with plenty of water, snacks, and sun protection. Contact John Meyncke at john.meyncke@gmail.com for more information. Rain cancels. SANTA MARGARITA GROUP

**SEPTEMBER 23 – SEPTEMBER 29**

*Please read "LIABILITY WAIVER" preceding these listings  
(Also refer to Weekly reoccurring Outings and Activities)*

**SEP 24 (TUE) 7:00 PM SAN GORGONIO CHAPTER EXCOM MEETING**  
Chapter governance meeting. PLACE: The San Gorgonio Chapter office, 4079 Mission Inn Ave., Riverside. INFO: RICK ESTES (951) 314-3328 <scsangor@gmail.com>. CHAPTER

**SEP 25 (WED) 5:00 PM HIDDEN SPRINGS HIKE**  
Moderate 3.5-mile loop hike on the Hidden Springs trail and arroyo. Trail has some ups and downs but basically follows the base of the hills and then returns through the arroyo. We start promptly at 5:00. BRING: water and sturdy shoes. MEET: from 60fwy in Moreno Valley go north on Pigeon Pass to left at the light on Hidden Springs Drive. Driveway into Box Springs Park is on the left off Hidden Springs Drive. Drive up the gravel road and park near the picnic tables. Rain cancels. INFO and LEADER: THERESA CARSON (951) 660-7246 or tcarson01@gmail.com. MORENO VALLEY GROUP

*Continued on Page 8 > > >*



*Calendar . . . Continued from Page 7*

**\*\*SEP 25 (WED) 8:00 AM SKYLINE TRAIL HIKE**  
 This is the newest trail opened in the Big Bear area for decades. This recently constructed trail provides great views of the local mountains and valleys. We will hike only a portion of the available trail, approximately 5.0 miles. The elevation changes are minimal. RATED: Easy to difficulty. MEET: At 8:00 A.M. at the Vons Shopping Center near the Starbucks Coffee shop. From there we will caravan to the trailhead. An Adventure Pass will be required for parking at the trailhead. BRING: 2 liters of water, trail snacks, sunscreen, sunglasses, hat, and good hiking shoes. CALL: To register contact Ed Caliendo, Hiking Leader at (909) 878-3813 or dogs111@msn.com.  
 BIG BEAR GROUP

**SEP 27-29 (FRI-SUN) CARRIZO PLAINS SERVICE AND HIKING**  
 This is an opportunity to visit and to assist an outstanding and relatively unknown national monument. There will be an optional and scenic hike high in the Caliente Mountains on Friday. On Saturday, we will join other volunteers in doing trail maintenance for National Public Lands Day. On Sunday, we will tour a number of the historic, prehistoric, and geologic sites in the Monument. Leader Craig Deutsche, craig.deutsche@gmail.com, 310-477-6670.  
 CNRCC DESERT COMMITTEE

**\*\* SEP 28 (SAT) 8:15 AM SUGARLOAF MOUNTAIN HIKE**  
 This is a "Peaks" of Big Bear hike. Those achieving all five peaks overlooking the Big Bear Valley will be given a commemorative patch. This will be a 10 mile hike with a 2,500-foot elevation gain. RATING: Strenuous MEET: at the Vons Shopping Center and we will car pool to the trail head. An Adventure Pass is required for parking at the trailhead. BRING: 3 liters of water, snack/lunch, sunscreen, sunglasses, hat, and good hiking shoes. CALL: To register please contact Jim Seifert, Hiking Leader at (760)694-5370 or email ironmany2k@hotmail.com  
 BIG BEAR GROUP

**SEP 28-29 (SAT-SUN) ANGELES NAT'L FOREST BACKPACK**  
 Join us for another easy backpack in the Angeles National Forest. This time we're going to a remote, streamside trail camp that has picnic tables, fire rings and a pit toilet. Hike in will be slow paced, about 3 miles one-way, with a 1,200' loss. Beginners with appropriate gear and plenty of hiking experience welcome. Friendly dogs in good shape also welcome. Contact Lygeia Gerard at Goody2shz@yahoo.com or (760) 868-2179 for equipment list and further details.  
 MOJAVE GROUP

**SEPTEMBER 30 – OCTOBER 6**

*Please read "LIABILITY WAIVER" preceding these listings  
 (Also refer to Weekly reoccurring Outings and Activities)*

**\*\*SEP 30 (MON) 8:00 AM BUTLER PEAK HIKE**  
 Moderate to Strenuous 10 mile round trip hike to the 8579 ft peak with grand views of the Bear Creek drainage and beyond. We will meet at the Von's parking lot in Big Bear Lake at 8:00 AM and at Grays Peak TH at 8:30 AM. Adventure pass required. Please call hike leader Ed Wallace (909 584 9407) or email at ednjeanne@charter.net to confirm.  
 BIG BEAR GROUP

**OCT 1 (TUE) 7:30 PM SAN GORGONIO CHAPTER MEETING**  
 PROGRAM: See front-page notice. PLACE: San Bernardino County Museum, 2024 Orange Tree Lane, Redlands. DIRECTIONS: Exit I-10 at California St. INFO: LADD SEEKINS <ladd.g.seekins@gmail.com>. (909) 800-3911  
 CHAPTER

**OCT 2 (WED) 6:30 PM BIG BEAR GROUP EXCOM MEETING**  
 The meeting place rotates. INFO: ED WALLCE 909-584-9407.  
 BIG BEAR GROUP

**\*\*OCT 2 (WED) 9:00 AM S.A. RIVER TR FROM SOUTH FORK PARKING LOT HIKE**  
 9:00 AM, moderate to difficult, 10-mile round trip loop hike along the Santa Ana River Trail with a 1000' elevation gain. We will meet at Vons in Big Bear Lake and carpool to the trailhead. Those coming from the Redlands area can meet us at the parking lot where Hwy 38 crosses the Santa Ana River at 9:40. Bring sturdy boots, plenty of water, seasonal clothing and lunch. For details call Dick Banks at 909-866-9232  
 BIG BEAR GROUP

**OCT 2 (WED) 4:30 PM OLIVE MTN HIKE**  
 Enjoy the view from Olive Mountain with a moderate to difficult 3-mile round trip hike. Elevation gain of about 1,000 ft. We start promptly at 4:30. BRING: water, flashlight, and sturdy shoes. MEET: from 60fwy in Moreno Valley exit Perris, go north 1 mile, turn right on Kalmia, go 1/2 mile and turn left on Kitching. Park at the end of the road on Kitching. Rain cancels. INFO and LEADER: THERESA CARSON (951) 660-7246 or tcarson01@gmail.com.  
 MORENO VALLEY GROUP

**OCT 5 (SAT) 8:30 AM TOUR DALEY RANCH IN ESCONDIDO HIKE**  
 Join me on a 7 mile tour of the Daley Ranch in Escondido. This is a 3,058 acre conservation area acquired by the city of Escondido in 1996. It consists of 20 miles of multipurpose use trails. The hike will travel to the two distinct areas of the ranch. This is a moderately difficult hike with about 700' of elevation gain/loss. Bring plenty of water (3 liters), a lunch or snacks, good hiking shoes, dress in layers and sunscreen is a must. There are no fees or passes needed. Leader: Bob Audibert. Please email me for information or reservations at bob.takeahike1@gmail.com or (951)302-1059. We will meet at the La Honda trailhead. DIRECTIONS: From Interstate 15, take the El Norte Parkway exit in Escondido. Go east four miles to La Honda Drive, turn left, drive one mile to Daley Ranch entrance and park in dirt lot on left at trailhead. "Rain Cancels"  
 SANTA MARGARITA GROUP

**\*\*OCT 5 (SAT) 7:00 AM SEC B /PCT- FOBES TRAIL TO DEVILS SLIDE HIKE**  
 This is a continuation of our goal to complete Section B of the Pacific Crest Trail in 2013. This segment will consist of a 16.3 mile day-hike. Starting at Fobes Trailhead the trail climbs from (5,990') 2.6 miles to the Apache Spring trail (7,430'). We continue NW 6.3 miles past Apache Peak and Southwell Peak. Here, we reach the top of the ascent (8,380') above Andreas Canyon; deep gorge. The trail turns west and in 2.1 miles intersects with Tahquitz Peak Trail (8570'). The PCT hike ends 1.3 miles further at Saddle Junction (8,100'). From here we hike 2.5 miles down Devils Slide Trail to end the trail. RATED: Moderate in difficulty. MEET: At 7:00 A.M. at the Devils Slide trailhead. From there we will caravan to the Fobes trailhead where the hike will begin. An Adventure Pass will be required for parking at the trailheads. BRING: at minimum of 3 liters of water, layered clothing, energy snacks, lunch, sunscreen, sunglasses, hat, and good hiking shoes. CALL: To register, contact Ed Caliendo, Hiking Leader at (909) 878-3813 or dogs111@msn.com.  
 BIG BEAR GROUP

**OCT 5-6 (SAT-SUN) HOT SPRINGS IN THE BLACK ROCK DESERT CARCAMP**  
 We will be visiting hot springs in the Black Rock Desert, about 100 miles N. of Reno. No set itinerary at this writing but we normally camp at a spring pretty close to Gerlach (pop. 150) Friday night and then relocate to a prettier spring on the Emigrant Trail on Saturday. Very remote country but a great time to visit the Black Rock as it's starting to cool off and most of the crowds are gone.

2WD high clearance. Primitive camping, sorry, no RV's or Trailers. Leader is very familiar with the area. For more info, call after 9/15, David Book 775/843-6443  
 CNRCC DESERT COM

**OCTOBER 7 – OCTOBER 13**

*Please read "LIABILITY WAIVER" preceding these listings  
 (Also refer to Weekly reoccurring Outings and Activities)*

**OCT 8 (TUE) 7:00 PM CHAPTER CONSERVATION COMMITTEE MEETING**  
 Monthly meeting or conference call. Take part in working on important conservation issues. Please participate: we need your help! INFO: KIM FLOYD, Conservation Chair, <kimfloyd@fastmail.fm> (760) 249-5385.  
 CHAPTER

**OCT 9 (WED) 4:30 PM HIKE TO THE "M" HIKE**  
 Difficult 4 mile round trip hike to the "M" on Box Springs. Trail has some very steep areas. We start promptly at 4:30. BRING: water, flashlight, and sturdy shoes. MEET: from 60fwy in Moreno Valley go north on Pigeon Pass to left at the light on Hidden Springs Drive. Driveway into Box Springs Park is on the left off Hidden Springs Drive. Drive up the gravel road and park near the picnic tables. Rain cancels. INFO and LEADER: THERESA CARSON (951) 660-7246 or tcarson01@gmail.com.  
 MORENO VALLEY GROUP

**OCT 9 (WED) 7:00 PM MOJAVE GROUP MEETING**  
 Monthly meeting except for July & August. PLACE: Sterling Inn, Regency Room, 17738 Francesca, Victorville. (One block north of Bear Valley Rd. on Ridgecrest.) Enter on Ridgecrest side of the building. Showing of Part 2 of A FIERCE GREEN FIRE: The Battle for a Living Planet is the first big-picture exploration of the environmental movement – grassroots and global activism spanning fifty years from conservation to climate change. Directed and written by Mark Kitchell, Academy Award-nominated director of Berkeley in the Sixties, and narrated by Robert Redford, Ashley Judd, Van Jones, Isabel Allende and Meryl Streep, the film premiered at Sundance Film Festival 2012, has won acclaim at festivals around the world, and in 2013 begins theatrical release as well as educational distribution and use by environmental groups and grassroots activists. .INFO: JENNY WILDER 760-220-0730 jensoasis@aol.com  
 MOJAVE GROUP

**OCT 10 (THU) 6:30 PM SANTA MARGARITA GROUP MEETING**  
 Monthly meeting. The public is welcome. PLACE: Rancho California Water District Headquarters, 42135 Winchester Rd., Temecula 92589. INFO: JIM MITCHELL (951) 506-9607 <sierraclubsmg@gmail.com>  
 SANTA MARGARITA GROUP

**OCT 11 (FRI) 8:00 AM MORMON TRAIL HIKE – PHELAN HIKE**  
 Join us for an easy-paced hike to explore that part of the historic Mormon Trail that meanders through the beautiful backcountry of Phelan. Meet at 8:00 a.m. at Desert Community Bank in Phelan (4895 Phelan Rd). Bring/wear hiking boots, layered clothing, daypack, water, snacks. Friendly dogs welcome. For more info contact Lygeia Gerard at Goody2shz@yahoo.com or (760) 868-2179.  
 MOJAVE GROUP

**OCT 11 (FRI) 9:00 AM UPPER MARSHALL CANYON HIKE**  
 After "getting up" you can join us in "UPPER" MARSHALL CANYON. This is a moderate rated convoluted 4.5 mile trek that winds its way via a 750' elevation gain to the loops top. There's plenty of foliage and views on this one, thanks to the city of La Verne for making this a Regional Park for all to enjoy! BRING: water, hiking sticks, sturdy boots and layered clothing. MEET: Please call/e-mail LEADER: JEFF WARHOL (909) 985-7686 jmwandjjw@hotmail.com prior to scheduled date for details. Rain cancels.  
 LOS SERRANOS GROUP

**OCT 12 (SAT) 7:00 AM ARRASTRE WATERFALL HIKE**  
 This hike is 5 miles round trip easy/moderate. This lovely riparian area is part of Juniper Flats and is sure to please all, children included. Bring 2/3 quarts of water, snacks, hiking stick, sturdy boots/shoes, layered clothing, hat and sunscreen. As well as enjoying the area we will be cleaning up any trash. We always encourage children to attend as this area is sure to please them. Children must be accompanied by a responsible adult family member. MEET at Victor Valley Museum in Apple Valley at 7am. For more information contact LEADER NORMAN BOSSOM at coachnorm@yahoo.com or 760-912-3725.  
 MOJAVE GROUP

**\*\*OCT 12 (SAT) 7:00 AM SEC B: PCT/FULLER RIDGE TO DEVIL'S SLIDE HIKE**  
 Near to top of San Jacinto Peak, the Pacific Crest Trail (PCT) winds down the south face of San Jacinto Mountain passing through Strawberry Junction, arriving at Devil's Slide trailhead. This is a through-hike that continues our quest to complete the Pacific Crest Trail, Section B. This is a 16.2 mile through-hike with an overall 1,300' elevation loss. RATING: Strenuous MEET: We will meet at the Devil's Slide parking lot located west of Idyllwild and carpool to Fuller Ridge where the hike will begin. BRING: Ten-essentials, layered clothing, 4 liters of water, lunch, sunscreen, sunglasses, and hat. RESERVATIONS: Call LEADER Ed Caliendo (760) 328-1090 or email at dogs111@msn.com.  
 BIG BEAR GROUP

**\*\*OCT 12 (SAT) 8:00 AM SB MTS, SPLINTERS-HOLCOMB CREEK HIKE**  
 Hike on the Pacific Crest Trail from Splinters, on Deep Creek, up to Holcomb Camp. We'll have lunch on the creek. Distance: 8 miles RT with 800 feet elevation gain and loss. BRING: 2 quarts water, snacks and lunch. CALL LEADER: BILL ENGS, 909-338-1910 <billengs@yahoo.com>. Adventure Pass required.  
 MOUNTAINS GROUP

**OCT 12-13 (SAT-SUN) CARRIZO PLAINS EXPLORE AND SERVE**  
 This weekend is part of a continuing project to aid the mobility of pronghorn antelope in the Carrizo Plain National Monument. Our service on Saturday will either remove or modify several sections of fence for the benefit of these ungulates. Sunday will be, at the choice of the group, either a hike in the Caliente Range or else a tour of popular viewing areas in the plains. This is an opportunity to combine carcamping, day-hiking, exploring, and service in a relatively unknown wilderness. Leader: Craig Deutsche, craig.deutsche@gmail.com, 310-477-6670.  
 CNRCC DESERT COMMITTEE

**OCT 13 (SUN) 7:00 AM ONTARIO PEAK HIKE**  
 This will be a strenuous hike up Ice House Canyon into the Cucamonga Wilderness to the top of Ontario Peak (elevation 8693 ft), 12.8 miles round trip with 3700 ft. elevation gain. The trail follows the creek for the first 1 1/2 miles under a canopy of oak, alder, cedar, and pine. Scenic view from the top of Ontario Peak. Rain cancels. Adventure Pass required at trailhead. BRING: sturdy boots, 3 liters water, lunch, sunscreen, layer clothing appropriate for the weather. Contact John St. Clair prior to scheduled date for carpooling and meeting place. LEADER: John St. Clair, <john@stclairs.us>, 909-983-8501  
 LOS SERRANOS GROUP

*Continued on Page 9 > > >*



Calendar . . . Continued from Page 8

**OCTOBER 14 – OCTOBER 20**

*Please read "LIABILITY WAIVER" preceding these listings  
(Also refer to Weekly reoccurring Outings and Activities)*

**OCT 15 (TUE) 7:00 PM LOS SERRANOS GROUP MEETING**  
Monthly meeting , program to be announced. Meeting begins at 7:00 pm The public is welcome, refreshments will be served. PLACE: Upland Presbyterian Church, Euclid and 11th , Upland INFO: MARY ANN RUIZ, (909) 815-9379, <ruizmaryann@gmail.com> LOS SERRANOS GROUP

**OCT 15 (TUE) 6:00 PM SAN JACINTO VALLEY (HEMET) CONS COM MEETING**  
Monthly conservation meeting. The public is welcome. LOCATION: Call or email for location & directions. CONTACT: SHAULI ROSEN-RAGER, (951) 767-2203, <gardens@netzon.net>  
SAN JACINTO VALLEY (HEMET) CONSERVATION COMMITTEE

**\*\*OCT 16 (WED) 8:30 AM BEAR CREEK FROM SNOW VALLEY AREA HIKE**  
8:30 AM, difficult, 8-mile round trip hike to Bear Creek with 1200' of elevation loss and gain. We will meet at the Performing Arts Center in Big Bear Lake and carpool to the trailhead from there. Those coming from the west can meet us at about 9:00 AM along Hwy 18 at the east end of Snow Valley. Bring sturdy boots, plenty of water, weather appropriate clothing and lunch. For details, call Dick Banks at 909-866-9232  
BIG BEAR GROUP

**OCT 17 (THU) 6:30 PM BIG BEAR GROUP MEETING**  
Monthly meeting except December. INFO: For current program information, please visit the Group web site www.sierraclubbigbeargroup.org. PLACE: Big Bear Discovery Center, 40971 North Shore Dr. (Hwy. 38), Fawnskin. CONTACT: 909-584-9407.  
BIG BEAR GROUP

**OCT 19 (SAT) 9:00 AM SB MTS, SPLINTERS TO DEVIL'S HOLE HIKE**  
You will hike a scenic section of the Pacific Crest Trail along the Deep Creek Canyon. Distance: 6 miles RT with 600 foot elevation loss and gain. BRING: 10 essentials, 2- quarts of water, and snack. WEAR: hiking boots. CALL: LEADER, HEATHER SARGEANT, 909-336-2836 for meeting place. Adventure Pass required.  
MOUNTAINS GROUP

**OCT 19 (SAT) 8:00 AM PUMA CANYON HIKE – PINON HILLS HIKE**  
Come take a walk up a sandy wash in the newly acquired Transition Habitat Conservancy land. If you have not visited this area, come see what the Conservancy is all about! We will learn about plants along the way in this beautiful Pinyon/Juniper area. This walk is about 3 miles round trip and is fairly easy with little elevation gain, however wear sturdy shoes as it's sandy and rocky. Bring at least 2-3 quarts of water, snacks, hat and sunscreen. Children and dogs are welcome when accompanied by a responsible adult (parent). Please email/call for meeting place and to arrange caravan/carpool to trail head. Hope to see you there! For more information, contact Wendy Walker at: wenlynwalker@gmail.com or call me at 760-220-6141.  
MOJAVE GROUP

**\*\*OCT 19 (SAT) 6:30 AM PCT SECTION B, THE FINAL SEGMENT HIKE**  
This is the final segment of our Winter Recognition Program whereby those individuals completing all 101.4 miles over 2013 and/or 2014 will receive a special recognition patch and participate in the annual awards party. This final segment of 19.8 miles takes us from Fuller Ridge (7,670') trailhead down the north side of San Jacinto Wilderness to Snow Creek Road (3,200') before completing the final 2.4 miles to the I-10 Freeway (1,230') and arriving at Tamarack Road and the end of our journey. RATED: Strenuous MEET: We will meet at the I-10 underpass on Tamarack Road at 6:30 A.M. We will gather into as few vehicles as possible and drive to the Fuller Ridge trailhead where the downhill hike will begin. BRING: Ten-essentials, layered clothing, 3 liters of water, trail snacks /lunch, sunscreen, sunglasses, headlamp, and hat. RESERVATIONS: Contact LEADER Ed Caliendo (909) 878-3813 or email at dogs111@msn.com.  
BIG BEAR GROUP

**OCT 20 (SUN) 12:00 – 3:00 PM PCT WARNER SPRINGS TO EAGLE ROCK HIKE**  
Join us on the famous Pacific Crest Trail as we seek out the fabulous "Eagle Rock". This moderate hike is a 5.5 miles out-and-back trail with 448 feet of elevation gain. It meanders through shady oaks, following a creek, and ends at a spectacular rock formation in the shape of an eagle. This hike should take about 3 hours. Families are welcome that have some hiking experience at this distance. As always, bring the ten essentials, including, plenty of water, sun protection, and sturdy shoes. We will meet at the Warner Springs Community Center located on Highway 79 SOUTH across from the fire station. Contact John Meyncke at john.meyncke@gmail.com for more information. Rain cancels.  
SANTA MARGARITA GROUP

**OCT 20 (SUN) 8:30 AM JOSHUA TREE ADVENTURE HIKE**  
Back to Joshua Tree, to begin the cool weather hiking season in the Park, destination to be determined. We will hike from 8 to 10 miles, with no more than 1000 ft of gain. Possible hikes are Willow Hole, Fan Canyon Overlook, or Pinto Basin to Crown Prince Overlook. Weather should be just right to begin exploring the park in the cool season. Wear hiking boots, layers, bring sunscreen, hat, 3 liters of water, lunch and snacks. Contact leader for meeting place. 8:30 is in Ontario area, or 10:00 am at the entrance off Hwy 62 from town of Joshua Tree. LEADER: Mary Ann Ruiz 909-815-9379 or ruizmaryann@gmail.com  
LOS SERRANOS GROUP

**OCTOBER 21 – OCTOBER 31**

*Please read "LIABILITY WAIVER" preceding these listings  
(Also refer to Weekly reoccurring Outings and Activities)*

**\*\*OCT 21 (MON) 8:00 AM CASTLE ROCK AND GUN SIGHT HIKE**  
This is a moderate to difficult 6-to-7-mile round-trip hike with a 1200-foot elevation gain. In route we will see Castle Rock, Champion Lodgepole Pine, Bluff Lake and Siberia Creek. The fall colors at Bluff Lake can be stunning at this time of year. Bring 2-quarts of water, snacks, clothing appropriate to the weather and sturdy hiking boots. We will meet at the east parking lot of the Performing Arts Center in Big Bear Lake at 8:00 AM and carpool to the trailhead. Call hike leader Ed Wallace to confirm at 909- 584 9407 or email at ednjeanne@charter.net  
BIG BEAR GROUP

**OCT 22 (TUE) 7:00 PM SAN GORGONIO CHAPTER EXCOM MEETING**  
Chapter governance meeting. PLACE: The San Gorgonio Chapter office, 4079 Mission Inn Ave., Riverside. INFO: RICK ESTES (951) 314-3328 <scsangor@gmail.com>.  
CHAPTER

**OCT 23 (WED) 4:30 PM TERRI PEAK HIKE**  
Difficult 4-mile round trip hike to Terri Peak, overlooking Lake Perris. Trail starts on a path behind homes and has some steep sections as it follows an old road to the top. We start promptly at 4:30. BRING: water, flashlight, and sturdy shoes. MEET: from 60fwy in Moreno Valley, exit south on Moreno Beach road. Follow Moreno Beach road for 3.4 miles, then turn left on Via Del Lago. Park on the right side of the road past the housing tract, do not enter Lake Perris Park. Rain cancels. INFO and LEADER: THERESA CARSON (951) 660-7246 or tlcarsen01@gmail.com.  
MORENOVALLEY GROUP

**Palm and Pine Advertising**

**Display Advertising Rates (Black and White)**

*Palm and Pine* pages are 9-1/2 inches wide by 14-1/2 inches deep. There are four columns per page. Each column is 2-1/4 inches wide. Display Advertising is charged at a rate of \$12.50 per column inch

**Classified Advertising Rates**

Personal: \$0.25 per word. \$5.00 minimum.  
Commercial: \$0.50 per word. \$10.00 minimum.  
Classified advertising is accepted to a maximum of 8 lines (about 45 characters to the line).

**Circulation and Distribution**

Rates are based on an average circulation of 5,500 per issue. The Chapter member subscription is included in membership dues.

Subscription rates for non-members is \$9.00 for six issues. Single copies are \$1.50. The newsletter is published and distributed on or before the 1<sup>st</sup> of the month, six times each year beginning January 1<sup>st</sup>.

**Deadlines**

Deadlines are the 1<sup>st</sup> of the month preceding the issue date. (Feb 1, Apr 1, Jun 1, Aug 1, Oct 1, and Dec 1)

**Submission**

E-mail copy directly to Mywwuni@charter.net Send payment to: Sierra Club, San Gorgonio Chapter, 4079 Mission Inn Ave, Riverside, CA 92501. Please note that payment is for *Palm and Pine* advertising and make Attn: Ladd Seekins. Payment must be received by treasurer prior to deadline. Allow at least two (2) weeks.

**OCT 24 (THU) ASPEN GROVE HIKE**  
Fall color (hopefully) day hike in the San Gorgonio Wilderness, along the Aspen Grove trail. Moderate 5 mile round trip with 700 feet elevation gain and stream crossings, through lush forest. Wilderness permit limits participants. Contact Bob Mourino for more information or to reserve. rlmourino@yahoo.com (760)953-3854.  
MOJAVE GROUP

**OCT 24-26 (THU-SAT) DEATH VALLEY WILDERNESS RESTORATION**  
Come join us as we restore wilderness values in this beautiful and remote national park. We will meet early Thursday afternoon. That afternoon we will work on the Darwin Falls trail, then drive to our primitive camping area and set up camp. Work Friday picking up debris from an airplane crash. If needed, we will continue work on Saturday; otherwise, participants will be free to enjoy the park. Leader: Kate Allen, kj.allen96@gmail.com, 661-944-4056  
CNRCC DESERT COM

**\*\*OCT 25-27 (FRI-SUN) 6:30 AM PCT-SEC C, MISSION SPRING TO I-10 BACKPACK**  
This is the last 29.9 mile segment of the Big Bear Recognition Program, promoting the completion of Section C of the Pacific Crest Trail (132.9 miles). This is a backpacking trip starting at Mission Spring Trail Camp, located 8 miles inside the San Gorgonio Wilderness off of Hwy 38 and the Heartbar exit. Starting at the trailhead we hike south on the Pacific Crest Trail to I-10 Freeway approximately 29.9 miles. We will spend two-nights camping along the PCT on our way to the I-10 Freeway near Whitewater. You will be required to financially contribute for your portion of the Airport van service that will pick us up at the I-10 freeway and return us to the Heartbar exit near Big Bear. RATING: Strenuous MEET: We will meet at the Heartbar exit along Hwy 38 above Angelus Oaks at 6:30 A.M. BRING: Ten-essentials, layered clothing, 3-liters of water, lunch, sunscreen, sunglasses, hat, backpacking equipment, and water-purification capabilities. RESERVATIONS: Call early so that Airport Van transportation arrangements can be made. Contact LEADER, Ed Caliendo (909) 878-3813 or email at dogs111@msn.com or Co-Leader, Jim Seifert at (760) 694-5370.  
BIG BEAR GROUP

**OCT 26-27 (SAT-SUN) GHOST TOWN EXTRAVAGANZA CARCAMP**  
Spend Halloween weekend with the ghosts of California's colorful past. Primitive camp at the historic ghost town of Ballarat in the eerie desert landscape near Death Valley. On Sat, do a challenging hike to ghost town Lookout City with historian Hal Fowler who will regale us with tales of this wild west town. We'll return to camp for Happy Hour and a potluck feast, followed by a midnight visit to Ballarat's graveyard. On Sun, a quick visit to the infamous Riley townsite before heading home. Group size strictly limited. Send \$8 per person (check payable to Lygeia Gerard), 2 large SASE, H&W phones, email, rideshare info to Ldr: Lygeia Gerard, P.O. Box 721039, Pinon Hills, CA 92372, 760-868-2179.  
CNRCC DESERT COMMITTEE

**\*\*OCT 26 (SAT) 9:00 AM SB MTS, DEEP CRK, FISHERMAN'S CAMP HIKE**  
Moderate six-mile hike with about a 500 ft. elevation loss and gain. This trip drops from rolling high country north of Green Valley into the upper reaches of Deep Creek. Beautiful views of Lake Arrowhead and a rich forest of Jeffrey and Coulter pines, along with several varieties of Oak. BRING: two quarts of water, lunch, snacks. WEAR: hiking boots, hat and sunscreen. Contact LEADER, DON FISCHER for information. 909-939-0332. Adventure Pass required.  
MOUNTAINS GROUP

**OCT 30 (WED) 4:30 PM TWO TREES-BOX SPRINGS HIKE**  
Moderate 3-mile hike up Two Trees Trail from Riverside with 1,000-foot elevation gain. BRING: water, flashlight, and sturdy shoes. MEET: from 215/60fwy in Riverside exit Blaine St/3rd St. and drive east 2 miles to where the road turns to dirt. Rain cancels. INFO and LEADER: THERESA CARSON (951) 660-7246 or tlcarsen01@gmail.com.  
MORENO VALLEY GROUP

**COMING UP**

**NOV 2 (SAT) 7:00 AM DEEP CREEK CANYON HIKE**  
This hike is 7 miles round trip on the Pacific Crest National Scenic Trail and is rated moderate. This historic area is quite spectacular and sure to delight all. Bring at least 3 quarts of water, snacks, and hiking stick. Wear sturdy boots/shoes, layered clothing, hat and sunscreen. A camera is a must! Children are welcome when accompanied by a responsible adult family member. We will take our time in this area so that maximum enjoyment can be achieved. We will also be collecting trash left by others. For meeting place and more information contact leader NORMAN BOSSOM at coachnorm@yahoo.com or 760-912-3725.  
MOJAVE GROUP

**NON-SIERRA CLUB ACTIVITIES**

The following activities, meeting & events are neither sponsored nor administered by the Sierra Club. The Sierra Club has no information about the planning of these activities & makes no representations or warranties about the quality, safety, supervision or management of such activities. They are published only as a reader service because they may be of interest to the readers of this publication.

**NON-SIERRA CLUB RECURRING WEEKLY & MONTHLY MEETINGS (LOOK IN CALENDAR FOR DATES)**

**(1ST FRI) 8:00 PM INTERNATIONAL FOLK DANCE FOLK DANCE**  
**NON-SIERRA CLUB EVENT UC RIVERSIDE FOLK DANCE CLUB**  
Join us for international folk dancing. This is the same group that used to meet at UCR. Meetings are twice monthly: on the 1st & 3rd Fridays. COST: \$3 donation to help pay for the room. PLACE:

*Continued on Page 11 >>>*



## Santa Margarita Group

By Jim Mitchell, Chair

In the last issue of the *Palm & Pine* I spoke of the need to keep a close watch on the trouble-plagued San Onofre Nuclear Power Plant located on the San Diego County coast just 25 miles west of Temecula. At the time I wrote about San Onofre there was a strong possibility the defective plant would be restarted despite evidence of serious design problems. Then in a surprise move, Southern California Edison, the nuclear plant's main operator, announced on June 7<sup>th</sup> that it will permanently retire the San Onofre plant. The reason given was the probable cost to make the necessary repairs as well as future regulatory uncertainties.

For those of us opposed to nuclear power as a source of electrical energy this was very good news. But the closure of San Onofre may say something even more. Are we seeing the nuclear power as an industry in decline? Are alternative sources of energy like wind and solar gaining stronger footholds? How about greater public awareness and support for energy conservation. But we must continue to keep a close eye on what happens with San Onofre. There is still the de-commissioning process to be completed and that could take decades. What happens to all that unspent nuclear waste and how is that going to be handled? And where will Edison find new sources of electrical energy? These are important questions yet to be answered. The Santa Margarita Group has officially been on summer vacation during July and August but that has not kept many of our members from staying as active as always. Here is a few examples:

### One of the Best Hikes I have ever led by Bob Audibert

On July 13<sup>th</sup> I led a 8.5 -9 mile out and back hike from Humber Park in Idyllwild to the fire lookout station on Tahquitz Peak. This was a strenuous hike that took about five hours of hiking time with a 2400' elevation gain. It turned

turned out to be one of the best group of hikers I have ever had the honor to lead. These hikers truly appreciated what they were experiencing. This made all the work organizing and scouting well worth the effort. These hikers were not going to



Tahquitz hikers gather.

was to connect with the next generation of environmentalists, represent the Sierra Club, and have a viable presence in a community event of this size. Some of the key points were the trash management with separate bins for recycling; free

developments leading up to the decision by Edison to close the Plant and what it is going to take to get rid of the nuclear waste that surrounds it. Then our General Meeting Program on Thursday October 10 will feature the well known Temecula activist Jane Laskin who is one of the leaders of Temecula Valley Recycling. Jane will tell us all about the importance of recycling our waste and share with us her innovative methods of promoting the recycling philosophy.

### A September Hike by John Meyncke

On Sunday, September 22<sup>nd</sup> from 12:00 - 3:00 pm we are heading to the Santa Rosa Plateau/ Monument Hill. Let's meet at the Visitor's Center at the Santa Rosa Plateau where the day use fee is \$3. From there, we travel through lovely meadows with large oaks and then uphill to the highest spot at the plateau, Monument Hill. We will be rewarded with some spectacular views of the plateau. On a clear day, we can see the ocean! This three-hour moderate hike will cover 5.2 miles. Families are welcome that have some hiking experience at this distance. Bring the ten essentials with plenty of water, snacks, and sun protection. Contact John Meyncke at john.meyncke@gmail.com for more information. Rain cancels.

### An October Hike by Bob Audibert

On Saturday, October 5<sup>th</sup> starting at 8:30 AM we are going on "A tour of Daley Ranch in Escondido." Join me on a seven-mile tour of the Daley Ranch in Escondido. This is a 3,058 acre conservation area acquired by the city of Escondido in 1996. It consists of 20 miles of multipurpose use trails. The hike will travel to the two distinct areas of the ranch. This is a moderately difficult hike with about 700' of elevation gain/loss. Bring plenty of water (3 liters), a lunch or snacks, good hiking shoes, dress in layers and sunscreen is a must. There are no fees or passes needed. Please email me for information or reservations at <bob.takeahike1@gmail.com> or (951)302-1059. We will meet at the La Honda trailhead. To reach the La Honda Trailhead—From Interstate 15, take the El Norte Parkway exit in Escondido. Go east four miles to La Honda Drive, turn left, drive one mile to Daley Ranch entrance and park in dirt lot on left; rain cancels.

### Another October Hike by John Meyncke

On Sunday, October 20<sup>th</sup>, starting at 12 noon we are going to hike the Pacific Crest Trail from Warner Springs to Eagle Rock. Join us on the famous Pacific Crest Trail as we seek out the fabulous "Eagle Rock." This moderate hike is a 5.5 miles out-and-back trail with 448 feet of elevation gain. It meanders through shady oaks, following a creek, and ends at a spectacular rock formation in the shape of an eagle. This hike should take about three hours. Families are welcome that have some hiking experience at this distance. As always, bring the ten essentials, including, plenty of water, sun protection, and sturdy shoes. We will meet at the Warner Springs Community Center located on Highway 79 SOUTH across from the fire station. Contact John Meyncke at john.meyncke@gmail.com for more information. Rain cancels.

OUR SANTA MARGARITA GROUP GENERAL MEETINGS ARE HELD ON THE 2<sup>nd</sup> THURSDAY OF EVERY MONTH EXCEPT IN JULY AND AUGUST AT THE RANCHO CALIFORNIA WATER DISTRICT HEADQUARTERS, 42135 WINCHESTER ROAD, TEMECULA 92589 STARTING AT 6:30 PM.

For more information, please email us at sierraclubsmg@gmail.com and visit our web site: www.sierraclubsmg.org and www.facebook.com/SierraClubSantaMargaritaGroup and for Outdoor Families information visit www.meetup.com/outdoorfamilies

be happy just rushing to the peak and back down. They savored every view, sound and smell of the mountains. Days like this are the reason I enjoy leading hikes.

### Five Days at Lightning in a Bottle By Margaret Meyncke

This summer, Temecula was chosen to host a special event called "Lightning in a Bottle," a festival that combines music, art, merchandising, and activities at Lake Skinner Regional Park. It has a special emphasis on environmental and sustainability issues and has been designated as the "greenest festival in America" for three years in a row. I agreed to participate as a table host and provide an on-site presence for five days. My goal

filtered water with no single use water bottles available; and an emphasis on car-pooling with a charge of \$35 dollars per solo vehicles. This event sold out and accommodated over 15,000 people. It was an outstanding experience and I look forward to returning next year with some really creative ideas to promote the Sierra Club! Check out their pictures at www.lightninginabottle.org

### Outdoor Families, Conservation Activities and Upcoming Programs by Pam Nelson

Outdoor families: Our June outing was picking blueberries at the Temecula Valley Blueberry Farm. We had a good sized group and really enjoyed the fresh berries. The small children were a real asset for this outing since the berries were at eye-level for them. We will have the end-of-summer annual quick-off for the group at the Lake Skinner Regional Park's Splash Pad on Sept. 13<sup>th</sup>. All are welcome. The children keep busy in the water while the adults can discuss the upcoming year's outings.

**Conservation:** I organized and attended a tour of the Bureau of Land Management parcels and County conservation parcels east of Temecula Wine Country to investigate complaints by Glen Oak Hills' residents about off-road vehicle use. Residents have seen commercial Jeep tour companies using the area for wine country visitors and equestrians have encountered off-road vehicles on the dirt roads and trails. The rangers and residents discussed various ways to gate, sign and fence access roads to stop these incursions. The HOA will work with adjacent HOAs to address the problems, as well.

And finally, the National Park Service grant for our Murrieta Creek trail has been very successful. We have asked for an extension so that we can continue into 2014.

### Upcoming General Meeting Programs:

Our program for our General meeting on Thursday, September 12 will feature Gary Headricks, one of the out spoken leaders of San Clemente Green that successfully opposed the San Onofre Nuclear Power Generating Plant. He will tell the interesting



## Island Hopping in Channel Islands National Park

August 25-27 • September 15-17, 2013

Join us for a 3-day, 3-island, live-aboard cruise to Channel Island National Park. Hike wild, windswept trails bordered with blazing wildflowers. Kayak rugged coastlines. Marvel at pristine waters teeming with frolicking seals and sea lions. Train your binoculars on unusual sea and land birds. Watch for the highly endangered island fox. Look for reminders of the Chumash people who lived on these islands for thousands of years. Or, just relax at sea. All cruises depart from Santa Barbara aboard the 68' twin diesel Truth.

The cost, \$590, includes an assigned bunk, all meals, snacks,

and beverages plus the services of a ranger/naturalist who will travel with us to help lead hikes, point out items of interest, and present evening programs. To make a reservation send a \$100 check, written to Sierra Club to leader Joan Jones Holtz, 11826 The Wye St., El Monte, CA 91732. For more information call or e-mail leader (626-443-0706; jholtzhln@aol.com).





Calendar . . . Continued from Page 9

Highgrove United Methodist Church, 938 W. Center St., Highgrove. DIRECTIONS: Take the Center St. exit from Interstate 215. The church is one half mile east of the freeway on the right. INFO: GAIL SEEKINS (909) 825-4427 lgseekins@sbcglobal.net or LARRY POWELL (909) 864-2309

**(3RD WED) 7:30 PM**                      **AUDUBON SOCIETY**                      **MEETING**  
**NON-SIERRA CLUB EVENT**                      **SAN BERNARDINO VALLEY AUDUBON SOCIETY**  
 PROGRAM: A guest speaker presents an illustrated program on wildlife or natural science. Come early to browse the gift tables & socialize. Note: The June and December general meetings begin at 6:30 pm and are potluck dinners. LOCATION: San Bernardino County Museum, 2024 Orange Tree Lane, Redlands. DIRECTIONS: Exit I10 at California St. INFO: DORI MEYERS, (714) 779-2201.

**(3RD FRI) 8:00 PM**                      **INTERNATIONAL FOLK DANCE**                      **FOLK DANCE**  
**NON-SIERRA CLUB EVENT**                      **UC RIVERSIDE FOLK DANCE CLUB**  
 Join us for international folk dancing. This is the same group that used to meet at UCR. Meetings are twice monthly: on the 1st & 3rd Fridays. COST: \$3 donation to help pay for the room. PLACE: Highgrove United Methodist Church, 938 W. Center St., Highgrove. DIRECTIONS: Take the Center St. exit from Interstate 215. The church is one half mile east of the freeway on the right. INFO: GAIL SEEKINS (909) 825-4427 <lgseekins@sbcglobal.net> or LARRY POWELL (909) 864-2309

**NON-SIERRA CLUB ACTIVITIES CALENDAR**

**SEP 6 (FRI) 8:00 PM**                      **INTERNATIONAL FOLK DANCE**                      **FOLK DANCE**  
**NON-SIERRA CLUB EVENT**                      **UC RIVERSIDE FOLK DANCE CLUB**  
 Join us for international folk dancing. This is the same group that used to meet at UCR. Meetings are twice monthly: on the 1st & 3rd Fridays. COST: \$3 donation to help pay for the room. PLACE: Highgrove United Methodist Church, 938 W. Center St., Highgrove. DIRECTIONS: Take the Center St. exit from Interstate 215. The church is one half mile east of the freeway on the right. INFO: GAIL SEEKINS (909) 825-4427 <lgseekins@sbcglobal.net> or LARRY POWELL (909) 864-2309

**SEP 18 (WED) 7:30 PM**                      **AUDUBON SOCIETY**                      **MEETING**  
**NON-SIERRA CLUB EVENT**                      **SAN BERNARDINO VALLEY AUDUBON SOCIETY**  
 PROGRAM: A guest speaker presents an illustrated program on wildlife or natural science. Come early to browse the gift tables & socialize. LOCATION: San Bernardino County Museum, 2024 Orange Tree Lane, Redlands. DIRECTIONS: Exit I10 at California St. INFO: DORI MEYERS, (714) 779-2201.

**SEP 20 (FRI) 8:00 PM**                      **INTERNATIONAL FOLK DANCE**                      **FOLK DANCE**  
**NON-SIERRA CLUB EVENT**                      **UC RIVERSIDE FOLK DANCE CLUB**  
 Join us for international folk dancing. This is the same group that used to meet at UCR. Meetings are twice monthly: on the 1st & 3rd Fridays. COST: \$3 donation to help pay for the room. PLACE: Highgrove United Methodist Church, 938 W. Center St., Highgrove. DIRECTIONS: Take the Center St. exit from Interstate 215. The church is one half mile east of the freeway on the right. INFO: GAIL SEEKINS (909) 825-4427 <lgseekins@sbcglobal.net> or LARRY POWELL (909) 864-2309

**OCT 4 (FRI) 8:00 PM**                      **INTERNATIONAL FOLK DANCE**                      **FOLK DANCE**  
**NON-SIERRA CLUB EVENT**                      **UC RIVERSIDE FOLK DANCE CLUB**  
 Join us for international folk dancing. This is the same group that used to meet at UCR. Meetings are twice monthly: on the 1st & 3rd Fridays. COST: \$3 donation to help pay for the room. PLACE: Highgrove United Methodist Church, 938 W. Center St., Highgrove. DIRECTIONS: Take the Center St. exit from Interstate 215. The church is one half mile east of the freeway on the right. INFO: GAIL SEEKINS (909) 825-4427 lgseekins@sbcglobal.net or LARRY POWELL (909) 864-2309

**OCT 18 (FRI) 8:00 PM**                      **INTERNATIONAL FOLK DANCE**                      **FOLK DANCE**  
**NON-SIERRA CLUB EVENT**                      **UC RIVERSIDE FOLK DANCE CLUB**  
 Join us for international folk dancing. This is the same group that used to meet at UCR. Meetings are twice monthly: on the 1st & 3rd Fridays. COST: \$3 donation to help pay for the room. PLACE: Highgrove United Methodist Church, 938 W. Center St., Highgrove. DIRECTIONS: Take the Center St. exit from Interstate 215. The church is one half mile east of the freeway on the right. INFO: GAIL SEEKINS (909) 825-4427 <lgseekins@sbcglobal.net> or LARRY POWELL (909) 864-2309

**OCT 16 (WED) 7:30 PM**                      **AUDUBON SOCIETY**                      **MEETING**  
**NON-SIERRA CLUB EVENT**                      **SAN BERNARDINO VALLEY AUDUBON SOCIETY**  
 PROGRAM: A guest speaker presents an illustrated program on wildlife or natural science. Come early to browse the gift tables & socialize. LOCATION: San Bernardino County Museum, 2024 Orange Tree Lane, Redlands. DIRECTIONS: Exit I10 at California St. INFO: DORI MEYERS, (714) 779-2201.

**OCT 26 (SAT) 9:00 AM**                      **MOJAVE NATIONAL PRESERVE SERVICE & STAR PARTY**  
**NON-SIERRA CLUB EVENT**                      **MOJAVE NATIONAL PRESERVE CONSERVANCY**  
 Join the Mojave National Preserve Conservancy and the National Park Service in a continuing effort to remove abandoned, barbed-wire fence from the Mojave National Preserve. Starting at 9 am, we will work thru the afternoon and then have the option of joining the MNPC/NPS star-gazing event at Hole-In-The-Wall on Sat evening (6 pm). Bring leather work gloves, water, sun screen, a hat, and lunch. Layers of clothing are best as temperatures can be unpredictable. Tools will be provided. The Black Canyon Group is reserved for free camping on Friday and Saturday. The Hole-In-The-Wall and Mid-Hills campgrounds will be available on a first-come/first-serve basis. Water and vault toilets are available at each campground. Bring a dish to share at the Star Party. Please RSVP to Sid Silliman (gssilliman@verizon.net).  
 MOJAVE NATIONAL PRESERVE CONSERVANCY



# Calico Solar Project is Dead!

By Joan Taylor, Energy Chair, Desert Committee

**A**fter three years of activism, legal challenges, technology changes, project owner changes, and overcoming sweetheart legislation, the erstwhile 6,000 acre Calico Solar project is finally dead.

We talk about the “6,000 acre Calico Project.” Did you ever wonder, what 6,000 acres of development really means? Here is what six thousand acres is: more than nine square miles. Imagine: nine square miles, completely covered with solar arrays! This is actually hard to conceive. The biggest solar project prior to Ivanpah was at the junction of Hwy 395 and Hwy 58. At barely over one square mile (less than 800 acres), it looks immense.

To get a notion of the size of what the Calico project would have been, imagine an area spanning from Apple Valley to the western edge of Victorville covered with solar arrays. That is 6,000 acres. And Calico was just one project of many! There are many, many others planned, all thousands of acres each. We are talking mass destruction of native California desert on a scale never encountered before.



This wild piece of the Mojave desert is no longer threatened by the giant Calico project. — Photo by Jeff Ardahl

### An Area Teeming with Desert Wildlife

We’ve talked about size, now let’s talk about location. Calico like the notorious Bright Source Ivanpah project, was located in an unusually sensitive area: plopped directly between the Rod-Ordman Area of Critical Environmental Concern and the Cady Mountains Wilderness Study Area. An area teeming with desert wildlife.

Referring to Calico, Sierra Club attorney, Gloria Smith, stated: “It would result in the deaths of scores [probably hundreds] of threatened desert tortoises, result in the local extinction of the Mojave fringe-toed lizard, destroy an exceedingly rare desert plant, obstruct bighorn sheep movement, risk the survival of local golden eagles and impact burrowing owls, desert kit fox, and American badger.”

But Calico was not unique. The sad fact is that nearly every one of these huge solar projects placed in our desert will impact scores if not hundreds of tortoise. As for kit foxes, the big Blythe Solar project was home to scores of dens of these shy, diminutive creatures.

Kit fox are particularly vulnerable. The nearby “Genesis” project was implicated in a rare outbreak of distemper among wild kit foxes in the area. To make matters worse, the CEC even relaxed the rules for Genesis, allowing it to bulldoze dens without proper procedures to protect kit fox. And it’s clear that someone tried to hide the evidence of the resulting deaths: a collar of one fox was found hidden in the truck of a Genesis construction worker.

This disregard for sensitive desert wildlife is unconscionable. But this is big business, and the motto seems to be, “the desert be damned.” Under the guise of green energy and jobs, the state and federal governments grease the skids for these huge projects — when in fact, putting solar in and near communities where power is used would probably provide more jobs at greater long-term benefit to the local economies involved. Riverside County aptly described these big solar projects as “boom and bust.”

### BLM’s New “Solar Program” Doesn’t Really Help

So, yes, Calico is dead. But, there are many

others like it—some better, some perhaps worse, waiting in the wings to be built on our pristine desert. And unfortunately, the BLM 2012 “Solar Program” did not fulfill its promise to limit solar to designated zones with lower impact. Instead, BLM designated approximately 285,000 acres of our public land as solar zones in six southwestern states. But it didn’t stop there. It then opened up another 19 million acres (an incredible 30,000 square miles) to solar applications in addition to these zones, creating a farce out of the whole process.

And to add insult to injury, a large number of mega-projects then pending were “grandfathered in,”—that is, exempted

from the siting criteria and any protective restrictions of the new Solar program.

The fact of the matter is that if solar is allowed to industrialize our natural public lands — instead of putting it on rooftops, parking lots and degraded ag land — there will be unprecedented destruction of the California desert and its wonderfully unique and sensitive resources we have all fought so hard to protect. It will take millennia to recover from this onslaught, if a recovery is even possible.

### Needless Desert Destruction

And for what? Frankly, most of this destruction is completely needless. If Germany can successfully build thousands of megawatts a year on rooftops, why can’t sunny California do the same or better? The answer? Because big utilities have the ear of government, and these big, transmission-dependent mega projects are more profitable for utilities.

Calico is dead: sounds good. As Chapter members we should be proud our Chapter initiated this litigation that helped kill Calico. Rejoice! But we must prepare to meet next onslaught of mega-solar industrialization of our natural public desert lands. It is time to speak truth to power: this is needless destruction.

National Sierra Club heeded Chapter’s call to oppose Calico. The Club has now taken the next step by advocating for an infinitely better alternative to destroying the desert for renewable energy. It has embarked on a campaign demanding increased energy efficiency and advocating for local “distributed generation” (“DG”). The concept of DG is to site renewable energy generation close to load, by placing solar on rooftops and brownfields, etc.

If we care about our other desert areas, we must all join the activist network dedicated to promoting the better alternative. This is my plea to you to do so.

To help, all you need to do is send an email to lead Club staff for the program (evan.gillespie@sierraclub.org), identify yourself as a Chapter member and request to be put on the listserv. This way you can do your bit to save our desert, by responding to focused action alerts to promote truly green ways to ramp up solar. There is a better way than the Calico’s of this world! The desert needs your help.

Thank you.



## Chapter's October 1<sup>st</sup> Meeting Features an Adventure in Lake Clark National Park, Alaska

**Note: Possibility of meeting location change. Recommend checking chapter website before leaving at <http://sangorgonio.sierraclub.org>**

Local Sierra Club member Brian Elliott will present a program on visiting Lake Clark National Park in Alaska. Lake Clark is located in southwest Alaska, across Cook Inlet from Anchorage. The park is noted for its two big volcanoes, Iliamna and Redoubt, as well as coastal brown bears. It has much more than that to offer the adventurous traveler.



Brian and three of his friends spent 21 days canoeing two of the park's National Wild and Scenic Rivers, the Tlikakila and Chilikadrotna Rivers. They also visited Twin Lakes, which are perhaps best known for being the wilderness home of Dick Proenneke, who homesteaded there in the late '60s and continued to live in his self-made cabin until the 1990s. Brian and his friends visited



the cabin and hiked in the area around the lakes before canoeing the length of the two lakes to begin their trip down the Chilidrotna River.

The group saw brown and black bears, lynx, coyote, moose, nesting bald and golden eagles and many other species of birds along the way.



### Political Update

by Jono Hildner, Political Chair

As I mentioned in my last column, Norma Torres, our endorsed candidate is now Senator Norma Torres. We started the endorsement process early enough to make an endorsement of a candidate to replace her in the Assembly, but couldn't get the subcommittee together to do the interviews in time to make a difference in the Primary election.



The Primary in the 52nd AD had Mayor (of Ontario) Paul Leon-NPP finish in the top spot and Councilmember (of Pomona) Freddie Rodriguez-D finish in second. As of the deadline for this column, a subcommittee has made an endorsement recommendation, but until it is finally approved up the ladder, all proceedings are confidential. We are hoping that, once the decision is final, we will get an email out to all of you who are voters in the 52nd and that some of you will join in an effort of the Sierra Club to mount a volunteer campaign to help our endorsed candidate win on September 24.

I can't emphasize enough, the importance of Sierra Club volunteers taking an active part in the campaigns of our endorsed candidates. Our involvement makes a difference, not only on the candidate for whom we are working, but when we do it as

an identifiable group, it has a huge impact on other electeds and those who are considering running. We'd all like to think that the only motivation of those in office is to do what is right, but I can tell you that when we can show that doing what is right will also get our active support in getting them elected, it's HUGE! Again, due to deadline issues, I can't report on the exact outcomes of our Chapter efforts on the August Sierra Club Lobby Day on August 19, but I can tell you that our three volunteers, Mary Ann Ruiz, Ron Roy, and Bill Joyce, did have a positive impact on our legislative delegation in promoting the Sierra Club's legislative agenda. I'm also confident that all three of them felt that it was well worth their time and that they got a lot out of it, as well. I would encourage you to volunteer next year to take two days out of your busy schedules and visit Sacramento as a part of this very impactful effort.

The endorsement process for state-wide offices is well underway and we may soon see endorsements of incumbents who have served our interests well. We will also be looking Chapter early endorsements of incumbents in Congressional and State legislative races. I encourage any of you who are interested in getting involved to call or email me. This isn't some kind of exclusive club.

**Let's turn the Inland Empire from Red to Green!**



## Membership

YES, I want to help safeguard our nation's precious natural heritage. My check is enclosed.

Name \_\_\_\_\_

Address \_\_\_\_\_

City \_\_\_\_\_

State \_\_\_\_\_ ZIP \_\_\_\_\_

E-mail \_\_\_\_\_

Check enclosed, made payable to Sierra Club

MasterCard Visa Exp Date \_\_\_\_/\_\_\_\_/\_\_\_\_

Cardholder Name \_\_\_\_\_

Card # \_\_\_\_\_

Contributions, gifts and dues to the Sierra Club are not tax deductible; they support our effective, citizen-based advocacy and lobbying efforts. Your dues include \$7.50 for a subscription to *Sierra* magazine and \$1.00 for your Chapter newsletter.

### MEMBERSHIP CATEGORIES

	INDIVIDUAL	JOINT
Introductory .....	\$15	
Regular .....	\$39	\$47
Supporting .....	\$75	\$100
Contributing .....	\$150	\$175
Life .....	\$1,000	\$1,250
Senior .....	\$24	\$32
Student .....	\$24	\$32

F94 W-1200<sup>1</sup>

**Sierra Club**  
P. O. Box 421041  
Palm Coast, FL 32142-1041

Solar... from Page 1

Brune, Executive Director of the Sierra Club. "With today's partnership, we are helping Sierra Club's 1.4 million members walk the walk in helping to address climate change by making it easier and more affordable to add solar panels to their homes. A recent poll found that 76% of Americans believe the country should move to a sustainable energy future by 2050 through renewable energy, showing that there is widespread support for residential solar across the country."

Any new residential solar customer can take advantage of this opportunity by visiting [www.sierraclub.org/gosolar](http://www.sierraclub.org/gosolar) or the Chapter home page <http://sangorgonio.sierraclub.org> and clicking on the "i-Quote" icon.

This program has been very successful over the past 12 months both for consumers and for the Club. Your Chapter Executive Committee highly recommends that all homeowners get a free "i-quote." The planet needs us to take action.



Another Sierra Club solar installation is just beginning at Chapter Excom member Mike Millsbaugh's family home in Riverside. The next Palm and Pine will show the finished installation and Mike will discuss the process and savings.

