



# SIERRA TAMPA BAY GROUP CLUB

Explore Enjoy and Protect the Planet

December 2016



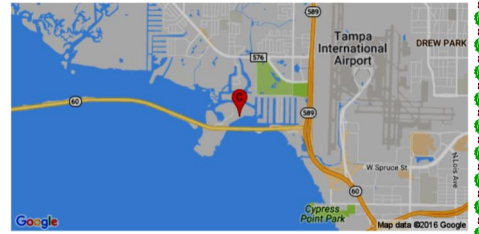
## Sierra Club Annual Holiday Party December 8

**When:** Thursday December 8 2016

**6:30 – 9:00 pm Social Hour (cash bar)**

**Dinner and Awards**

**Where:** Bahama Breeze 3045 North Rocky Point Drive, Tampa 33607



We are very happy to move our annual Holiday Party to the waterfront venue at Bahama Breeze.

Join your Sierra Club friends for a fun evening of celebration and festivities. Gary Gibbons will present a slide show and we will have a short awards ceremony to recognize Sierra Club volunteers. Buffet dinner with 3 entries, 3 sides and salad. Dinner includes coffee, tea or soda. Cash bar available

**COST:** Cost is \$12.00 plus a small service fee per guest. Reservations and prepayment required.

**For Registration go to:** <http://www.eventbrite.com/e/tampa-bay-sierra-holiday-party-tickets-29269595147>.

*Space is strictly limited. This event is sure to sell out so please RSVP on our Meetup page from [Florida.Sierraclub.org/TampaBay](http://Florida.Sierraclub.org/TampaBay). Tickets will not be available at the door.*

**Event Organizer:** Rocky Milburn at [tbico@live.com](mailto:tbico@live.com) (813) 966-9785



**IMPORTANT NOTICE:** This newsletter is delivered bi-monthly in print to your mailbox. For updated news and information go to [www.florida.sierraclub.org/tampabay](http://www.florida.sierraclub.org/tampabay) or go on Facebook by searching for Tampa Bay Sierra Club

## **SAVE THE DATE! Don't miss the January 2017 Planning Meeting**

The Tampa Bay Sierra Club is hosting its Annual Planning Meeting on January 14<sup>th</sup>, 2017 from 9 AM to 2PM.

**Location:** Academy Prep Center of Tampa,  
1407 E. Columbus Dr. Tampa, FL 33605



**All members are invited to attend Tampa Bay Group's Annual Planning Meeting.**

Please reserve this date to come help us set out a plan for the Tampa Bay Sierra Club Group on conservation issues, outings, and events. Debbie Mathews of the Suncoast Sierra Club Group will be serving as our moderator. The Executive Committee election ballots will be counted and the new board will be seated. New committees are forming and re-grouping in a wide areas of interests, and will be looking for volunteers to come forward for support. This is a great opportunity to take an active role in helping us set our goals and priorities for the year ahead. Lunch will be served.

Please RSVP so that we can get an accurate count for lunch. For more information contact Kent Bailey at [kent.bailey@florida.sierraclub.org](mailto:kent.bailey@florida.sierraclub.org) or call 813-727-1202.

## 2016 Executive Committee

### Chair: Kent Bailey

(813)-986-7819

[kent.bailey@florida.sierraclub.org](mailto:kent.bailey@florida.sierraclub.org)

### Vice-Chair / ICO Chair / Outings

#### Chair: Rocky Milburn

(813) 966-9785

[rocky.milburn@florida.sierraclub.org](mailto:rocky.milburn@florida.sierraclub.org)

### Conservation / Membership

#### Chair: Paul Thibault

[paul.thibault@florida.sierraclub.org](mailto:paul.thibault@florida.sierraclub.org)

### Treasurer: Don Kruse

#### Energy Chair: Bob Howell

[bob.howell@florida.sierraclub.org](mailto:bob.howell@florida.sierraclub.org)

#### Michael Newett (813) 381-2620

[michael.newett@florida.sierraclub.org](mailto:michael.newett@florida.sierraclub.org)

### Ex-Com Member:

#### Tamara Pearson [tamara.pearson@florida.sierraclub.org](mailto:tamara.pearson@florida.sierraclub.org)

[tamara.pearson@florida.sierraclub.org](mailto:tamara.pearson@florida.sierraclub.org)

#### Ex-Com Member: Gary Gibbons

#### Ex-Com Member: Pat Kemp

[pat.kemp@florida.sierraclub.org](mailto:pat.kemp@florida.sierraclub.org)

### Other Officers & Assignments

#### Secretary: Linda Hugues

#### Webmaster: Steve Tryon

(813) 980-2079

[steve.tryon@florida.sierraclub.org](mailto:steve.tryon@florida.sierraclub.org)

#### Newsletter: Corky Crowley

(813) 968-4110

[corky.crowley@florida.sierraclub.org](mailto:corky.crowley@florida.sierraclub.org)

#### Political Chair: Beverly Griffiths

(813) 210-4850

[bev.griffiths@florida.sierraclub.org](mailto:bev.griffiths@florida.sierraclub.org)

#### Stadium Recycling Initiative:

##### Dave Varrieur (813) 503-6970

[appraiserfl@outlook.com](mailto:appraiserfl@outlook.com)

#### Student Liaison Chair / Publicity

#### / Outreach Chair: Lauren Jones

[laurenjones1209@gmail.com](mailto:laurenjones1209@gmail.com)

#### Sierra Florida Office:

727 824-8813

#### Tampa Bay Group web site:

<http://florida.sierraclub.org/tampabay>

#### National Office: 415-977-5500

#### Washington D.C. 202-547-1141

## TAMPA BAY



### OUTINGS

SIERRA CLUB

Join our **MEETUP PAGE** online where all outings are posted. Go to [www.meetup.com/Sierra-Club-Groups-of-the-Greater-Tampa-Bay-Florida-Area/](http://www.meetup.com/Sierra-Club-Groups-of-the-Greater-Tampa-Bay-Florida-Area/) and click on Join Us! Anyone can join the Meetup page to get regular notices when new outings are added. Or for outings throughout the state go to [florida.sierraclub.org/outings\\_browse.asp](http://florida.sierraclub.org/outings_browse.asp)

### Florida Seller of Travel Reference No. ST37115

*To participate in the Sierra Club's Outings, you need to sign a liability waiver, call: (415) 977-5630 or [www.sierraclub.org/outings/chapter/forms/](http://www.sierraclub.org/outings/chapter/forms/)*

## TAMPA BAY



### Inspiring Connection Outdoors (ICO)

If you would like to help or learn about this growing program, please contact Rocky Milburn, [tbico@live.com](mailto:tbico@live.com) or Emilie Joyce, [emiliejoyce17@gmail.com](mailto:emiliejoyce17@gmail.com).

**Membership Report** The Tampa Bay Group now has 2,215 members (Oct.). There are 18 Groups in the Florida Chapter with a total of 31,284 members in July. Join us in protecting the environment. Contact Paul at [paul.thibault@florida.sierraclub.org](mailto:paul.thibault@florida.sierraclub.org)

### Sierra Successes at the Polls

On November 8 the voters of Hillsborough County elected Sierra Club activist Pat Kemp to the County Commission. And they firmly rejected the proposed Amendment One, which would have stifled the development of solar energy in Florida. The strong election effort by Sierra Club activists was supported by record high contributions to our Political Action Committee (PAC) fund. In the days ahead we must be prepared to vigorously defend the environment. One way you can help is thru a contribution to our PAC fund. Please contact our Political Chair Bev Griffiths for instructions on how to contribute by mail. Note: Contributions to the Tampa Bay PAC fund are not tax deductible.

### Biographies of the Candidates for the Executive Committee 2017

All four candidates are currently serving on the Executive Committee and are running for re-election.

#### Gary Gibbons

In my professional life, I am a practicing attorney but in my spare time, you'll likely find me on my Stand Up Paddle Board deep in the mangroves photographing something beautiful, or hiking or fishing. I am a certified Outings Leader for Sierra Club and love leading outings to explore the beautiful area that we live in and to inspire others to get active in advocating for protection of our fragile ecosystem.

I am presently serving on the Ex-Com of the Tampa Bay Sierra Club and want to continue the good work that we are doing. I am a member of the Political Committee and have been active in electing candidates to public office who will be mindful of the need to protect the environment in every decision which they make.

*Continued on page 3*

# The Nominating Committee of the Tampa Bay Sierra Club Group presents the 2017-2018 Executive Committee (Ex-Com) Candidates for election.

## MAIL IN BALLOT VOTE - BY JANUARY 2, 2017

I am a member of the Tampa Bay Sierra Club. I vote for the following Four candidates for the 2017 / 2018 term on the Executive Committee.

	INDIVIDUAL	JOINT
1. Gary Gibbons:	<input type="checkbox"/>	<input type="checkbox"/>
2. Pat Kemp:	<input type="checkbox"/>	<input type="checkbox"/>
3. Don Kruse:	<input type="checkbox"/>	<input type="checkbox"/>
4. Paul Thibault:	<input type="checkbox"/>	<input type="checkbox"/>

**Membership Number:**

**Individual:** \_\_\_\_\_

**Joint:** \_\_\_\_\_

### PLEASE VOTE:

One ballot for individual members, two for family members. Deadline for all voting is January 2<sup>nd</sup>. Please include your 8 digit membership number located to the left of the printed address on the newsletter back page when voting. Vote for only four of the above candidates.

### Mail vote to:

**Mariella Smith, Nominating Committee Chair**  
**108 Janie St.**  
**Ruskin, Florida 33570**

### Pat Kemp

I am a lawyer and I will be on the Hillsborough County Commission. I have been on the Sierra Club Executive Committee for two terms. I have been an environmental and community advocate for decades. I worked as an aide for Kathy Castor at the County Commission, and for Rep. Sara Romeo in the State House. I've been an advocate for transit and smart growth for decades and have worked to bring the Cross-Bay Ferry Project to Tampa Bay. I've been a strong advocate for renewable energy and recycling.

### Don Kruse

A third generation Floridian and a lifelong Tampa resident, active in the Tampa Bay community, I am proud to have served as the 2012 event chair for the American Cancer Society's Relay for Life in Town 'N' Country. I am a past president of the board of directors for Wheels of Success, a non-profit which provides help for needy individuals and families. I also served on the board of

directors of the Veterans Day Parade Group of Tampa. I have always tried to lead by example. I joined the Sierra Club Growth Management team in 2012 to stay abreast on growth in our community, and do what I can to help guide it in the right direction.

### Paul Thibault

Sierra Club member since 2010, and active serving as a member of the Tampa Bay Executive Committee, Membership Chair and Conservation Chair. As Chair of the Conservation Committee I have spoke to Board of County Commissioners on transportation issues and MPO sub-committees on opposition to TBX; and comment to FL Fish & Wildlife Conservation Commissioners on Critical Wildlife Area buffer zones. I'm active with Solar Projects with local school programs and at a solar event we sponsor with the University of South Florida. I have attended numerous tabling events. Developing a series of bookmarks for tabling handouts. Working on planning for the 150th anniversary of John Muir's trek across Florida in 1867. Serving actively with the Tampa Bay Group is rewarding and more remains to be accomplished, and I hope to continue the outreach.

**Nominating Committee Thanks All Nominated Candidates for Tampa Bay Sierra Club Executive Committee.**

### Don't Trash The Holidays!

Reduce Holiday waste give eco friendly gifts like gift cards, event tickets or your time.

Let your LED lights shine and use 75% less energy than conventional holiday lights.





**SIERRA CLUB**  
FOUNDED 1892

# Sierra Club Tampa Bay Group

## December 2016



Nonprofit Org.  
U.S. POSTAGE  
**PAID**  
TAMPA, FL  
Permit No. **2834**

**Address Changes:**

Please call (415) 977-5653 or email [address.changes@sierraclub.org](mailto:address.changes@sierraclub.org)  
Include your membership number located on the mailing label.

**Tampa Bay Group**  
P.O. Box 1596  
Thonotosassa, Florida 33592

**Web:**  
[florida.sierraclub.org/tampabay](http://florida.sierraclub.org/tampabay)



**Membership:** Join today for just \$15.00 and receive a FREE Sierra Club 1892 style Rucksack at [www.sierraclub.org](http://www.sierraclub.org)



My Name \_\_\_\_\_  
Address \_\_\_\_\_  
City \_\_\_\_\_  
State \_\_\_\_\_ Zip \_\_\_\_\_  
E-mail \_\_\_\_\_  
 Check enclosed, made payable to *Sierra Club*  
Please charge my: MasterCard  Visa   
Exp. Date \_\_\_\_\_ / \_\_\_\_\_  
Cardholder Name \_\_\_\_\_  
Card Number \_\_\_\_\_

**MEMBERSHIP CATEGORIES**  
INDIVIDUAL JOINT

INTRODUCTORY	\$15	
REGULAR	\$39	\$49
SUPPORTING	\$75	\$100
CONTRIBUTING	\$150	\$175
LIFE	\$1000	\$1250
SENIOR	\$25	\$35
STUDENT	\$25	\$35
LIMITED INCOME	\$25	\$35

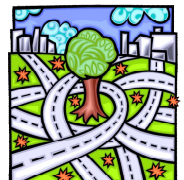
**SIERRA CLUB**  
P.O. BOX 421041  
Palm Coast, FL 32142-6417

F94Q W3313 1

### The Conservation Committee Report:

The December meeting will take place on Monday, 12 December, at 6:30pm at St. Paul Lutheran Church at 5103 North Central Ave., Tampa, FL. We meet in the Snyder Building directly behind the church. Follow the Tampa Bay Sierra Club signs.

- Jaclyn Lopez, Florida Director, Staff Attorney, for the Center for Biological Diversity, will speak on phosphate at the December meeting. Ms. Lopez wrote an insightful article in the Tampa Bay Times on 19 September entitled: "It's time to rein in Florida's phosphate strip mining."
- The FL Fish & Wildlife Conservation Commission finalized planning for critical wildlife areas in Florida on 16 November at USF St. Petersburg. We gave public comment that the buffer zones as established should be considered "experimental" as the distances set are significantly less that research shows is needed to prevent human disturbance.
- The Temple Terrace Fertilizer Ordinance remains an active issue, with the City Council to meet on 6 December to decide on the measure. Please attend.
- We are working with four organizations presently on students participating in Solar Projects to be exhibited at the USF/Sierra Club sponsored Solar Fair/Solar Tour on 25 March 2017 at USF Tampa. The students will build solar devices, explain their project to the public at the USF Solar event, and have a tour of the USF campus and instructional/research facilities.



Paul Thibault: Chair Conservation Committee