



# Loo Wit Rumblings

Environment, Education, Conservation & Events for Southwest Washington

## September program to focus on monuments

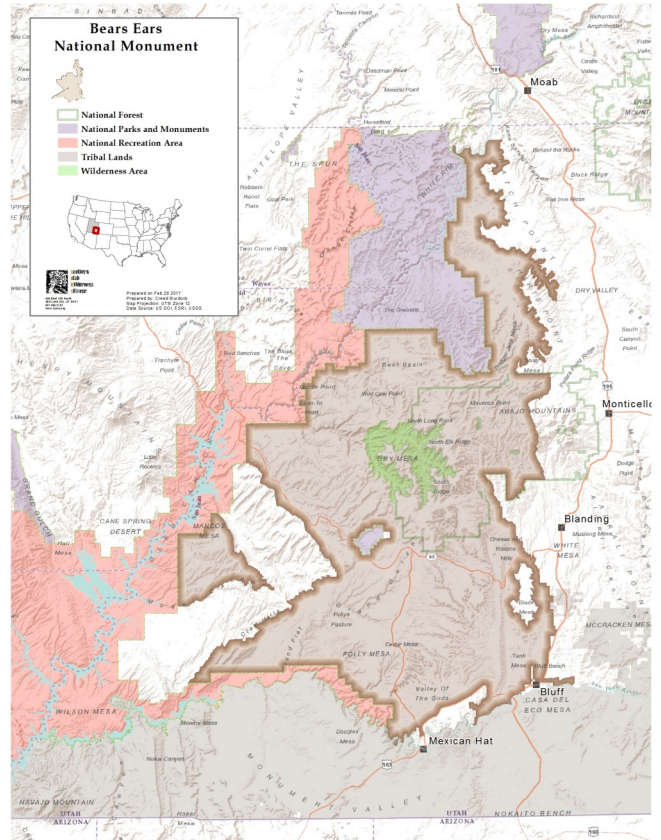
*Lehman Holder, Executive Committee*

Presidents have long used the Antiquities Act, signed by President Theodore Roosevelt in 1906, to designate and protect America's special places as national monuments.

Currently, however, the Trump administration is trying to weaken the Act, and roll back protections for 27 monuments established since 1996 by Presidents Clinton, Bush and Obama.

Monuments at risk include Bears Ears and Grand Staircase-Escalante in southern Utah.

Jenny Holmes, new Washington-Oregon field organizer for the Southern Utah Wilderness Alliance (SUWA), will present a new slide show and talk on the status of efforts to save Bears Ears and Grand Staircase. Look for an in-depth article in the September issue of Rumblings.



Map of Bears Ears National Monument and surrounding areas, courtesy of Southern Utah Wilderness Alliance

**Learn more about the Southern Utah  
Wilderness Alliance at [suwa.org](http://suwa.org)**

**Mark your calendars for Loo Wit's annual holiday party!**

Saturday, December 2nd

5:00-8:00 pm

Unitarian Universalist Church of Vancouver

4505 E18th St, Vancouver WA

*Program details will be announced in September's newsletter*

# LOO WIT CALENDAR OF EVENTS

**Saturday, July 29th:** Lookout Mountain via Gumjuwac  
Saddle hike

**Sunday, July 30th:** Sea kayaking

**Saturday, August 5th:** Bike outing

**Tuesday, August 8th:** Beyond Fossil Fuels Task Force  
meeting. 5:30pm social hour, 6:00pm meeting start. St. Luke's  
Episcopal Church off 4th Plain.

**Saturday, August 12:** Sea kayaking

**Sunday, August 20th:** Sea kayaking.

**Saturday, August 26th:** Bike outing

**Tuesday, September 5th:** Loo Wit Executive Committee  
Meeting 6:30-8p, Felida Fire Station

**Saturday, December 2nd:** Loo Wit Holiday Party, Unitarian  
Universalist Church Vancouver, 5:00-8pm

## We're on Facebook!

If you haven't already, please give us a "like" on Facebook!  
We share information about upcoming events, photos from  
outings and the latest Loo Wit news. You can even share  
our posts with your own Facebook friends, helping to  
spread the word about Loo Wit! We'd love to interact with  
more of you online!

You can also find all of our upcoming outings on MeetUp,  
and archives of our monthly newsletters on our website.

[www.facebook.com/loowit.group](http://www.facebook.com/loowit.group)

[www.meetup.com/Portland-Vancouver-Sierra-Club-  
Outings-Events](http://www.meetup.com/Portland-Vancouver-Sierra-Club-Outings-Events)

[www.sierraclub.org/washington/loo-wit](http://www.sierraclub.org/washington/loo-wit)



## Loo- Wit Executive Committee Members

**Mark Leed**—Chair  
**Don Steinke**—Vice Chair/Oil & Coal  
**Steve Foster**—Treasurer/Sales  
**Mike Newsham**— Outings Liaison  
**Alona Steinke**—Oil & Coal/at large  
**Lehman Holder**—At large  
**Fred Suter** — Legislative Liaison

*Meetings are normally held on the  
first Tuesday of the month and  
open to the public*

## Loo Wit Welcomes New Rumblings Editor

*Emily Waters, Advisory Committee*

When Loo Wit's longtime newsletter editor Lynn Stiglich stepped down last summer, Emily Waters joined the group to take over the role. Since then, she's been working closely with Loo Wit's executive committee, collecting article and photo submissions for the group's newsletter and Facebook page.

Emily works in Vancouver and spends her free time hiking, practicing photography, reading, and getting outdoors in any way she can.



Emily hiking part of the John Muir Trail in August 2015

## Listserves Connect Loo Wit beyond Newsletter

*Don Steinke, Executive Committee*

Our quarterly newsletter covers only a fraction of our work. Please sign up for one or more of our Listservs for action alerts and relevant news

### **The Cascade-Loowit-Conservation Forum Listserv:**

This listserv generally distributes 3-4 news item or action alerts per month.

To subscribe to this list, send an email to John McConnaughey LLM at [loowit-listmaster@cascade.sierraclub.org](mailto:loowit-listmaster@cascade.sierraclub.org) and write the word Subscribe in the subject line.

### **The Coal-WA-SW Leaders Listserv:**

This listserv is focused on new fossil fuel infrastructure and climate change. This list generates approximately 3-4 announcements per week. To get on this list, attend one of the monthly meetings of the Beyond Fossil Fuels task force. We meet on the second Wednesday of every month at 5:45 in St. Lukes Episcopal Church on Fourth Plain and F Street. The parking lot is reached from F street.

### **The Kalama Methanol Listserv:**

To get on this list, contact Cecile Gernez. [Cecile.Gernez@sierraclub.org](mailto:Cecile.Gernez@sierraclub.org)

### **The Coal-Export-Longview-Volunteers Listserv (mainly for people in Cowlitz County):**

To get on this list, contact Jasmine Zimmer-Stuckey [Jasmine.Zimmer-Stucky@columbiariverkeeper.org](mailto:Jasmine.Zimmer-Stucky@columbiariverkeeper.org)

### **Longview Coal**

<http://cqrcengage.com/wec/app/sign-petition?>

[1&ctr=0&engagementId=374213&ite=1556&lea=2197460&lvl=100&org=800&par=1&trk](http://cqrcengage.com/wec/app/sign-petition?1&ctr=0&engagementId=374213&ite=1556&lea=2197460&lvl=100&org=800&par=1&trk)



# SIERRA CLUB

Explore—Enjoy—Protect

## National Board of Directors Approves Use of Civil Disobedience

*Mark Leed, Chair*

Recognizing that non-violent direct action has been a useful tool in building many social movements, the Sierra Club Board of Directors recently approved the limited use of civil disobedience. Any member or group of members wishing to participate in an act of civil disobedience in the name of the Sierra Club needs to submit an application to the Board at least 45 days in advance. The Board will only accept applications from Chapters, the Sierra Student Coalition, the staff Executive Team or National Campaign Committees. A local group such as Loo Wit would need to first make a request to the Washington Chapter.

Some of the questions the Board of Directors will seek to answer when evaluating a proposed act of non-violent civil disobedience include:

Does the action contribute to Sierra Club's mission and priorities? Does it align with Sierra Club's particular values and strengths, or might it be a better fit for another organization? Does it present a real opportunity to change the debate or impact change? Will it help broaden people's perspectives of why our issues are so critical?

To learn more about the new policies, please visit <http://clubhouse.sierraclub.org/administration/policies/civil-disobedience/>.



Sierra Club Executive Director Micheal Brune and others in the club's first sanctioned act of civil disobedience in 2013.

Photo: <http://angeles.sierraclub.org>

## Legislative Committee Report

*Fred Suter, Legislative Liaison*

At the beginning of this year's State Legislative Session, the top priorities of the Chapter's legislative committee were to defend the Supreme Court's Hirst rural water rights decision, restore the Model Toxic Control Act's (MTCA) funding for Public Participation Grants (PPG), and advance chapter priorities with regard to climate and energy legislation (renewable energy, oil transportation safety, and carbon tax). This year's legislative session began Jan 9 and the third special session is just now behind us so it's time to evaluate what happened. First off, the legislature averted a government shut down by passing an Operating Budget. Conversely, the Capital Budget has not passed nor has any favorable Hirst decision legislation.

**Hirst Decision:** Throughout most of the session, Senate Republican members promoted a simple repeal of the Hirst decision, in which the Washington Supreme Court ordered that new rural development must not harm critical instream flows of salmon. The good news is that House Democrats defeated the worst of the Republican bills supporting the repeal (SB 5239). Unfortunately, efforts to develop a compromise that would allow development but still protect fish habitat proved unsuccessful. Debate played out in the third special session to weaken the Hirst decision within the context of the Capital Budget. Senate Republicans threatened to block funding for all "brick and mortar" construction if the Hirst decision wasn't repealed. When debate turned to tribal treaty rights (the state's obligation to protect salmon runs under the treaties), negotiations broke down. Senate Republicans made good on their threat and refused to fund state school construction projects for the next two years.

At the local level, Clark County is now in the position of needing to determine how to implement the Hirst ruling without clarification from the state. Ideally, the Board of County Councilors will follow the path taken by Clallam and Kittitas Counties, promoting a "mitigation fee" that pays for full impacts from the wells on critical salmon habitat.

*Article continued on following page*



# Legislative Committee Report

*Fred Suter, Legislative Liaison*

**MTCA Funding:** At the beginning of the session there was a projected \$72 million shortfall in MTCA funding. The Chapter legislative committee's priority was to address these shortfalls as the money supports Public Participation Grants which are used to fund Environmental Justice work in communities around the state impacting toxic cleanup at the local level.

Fully funding K-12 education due to the Supreme Court's McCleary decision was a top priority for legislators. There was discussion to strip MTCA funding, but after numerous proposals and much debate, the final Operating Budget included full funding for PPG and for Governor Inslee's Clean Air Rule. Further, the loss of the Capital Budget had other impacts beside school construction projects. These included delaying new funding for the Office of the Columbia River, funding for dams on the Chehalis River and other damaging water infrastructure projects. These are all projects the Sierra Club opposed.

## **Climate and Energy Legislation:**

Numerous bills affecting renewable energy, oil transportation safety, and carbon tax were proposed. Multiple bills were introduced to undermine Initiative 937 (which requires utilities to reinvest in renewable energy). These included HB 1249, HB 1360, SB 5128, and SB 5232. None of them gained enough support to pass. SB 5977 was introduced to provide incentives to convert the Trans Alta Coal Plant to natural gas in the Operating Budget. The Sierra Club opposed this proposal which was ultimately vetoed by Governor Inslee. A good bill that the Sierra Club supported, (HB 1334) to phase out coal, natural gas, and nuclear power as sources of energy for new demand after 2020 failed to advance.

HB 1611 and SB 5462 were proposed to strengthen oil transportation safety and address a shortfall in funding the state oil spill response. Other bills that offered alternatives were HB 1210 and SB 5425. None of these bills gained enough support to pass. Funding for the state's oil spill response is a priority that will be addressed again in next year's legislative session.

Carbon tax proposals received lots of attention. HB 1646 and companion bill SB 5509 was supported by the Alliance for Jobs and the Environment and the Sierra Club. HB 1555 and companion bill SB 5127 was supported by the Governor. SB 5385, a bill the Sierra Club opposed, substituted a carbon tax for fees under the Clean Air Rule, but in the end, none of these alternatives advanced.

In summary, the Chapter legislative committee saw success in defending the Hirst decision (this is good news - so far, so good) and securing MTCA funding for PPG. The committee also successfully opposed numerous bad renewable energy bills. Unfortunately, none of the oil transportation bills or carbon tax bills passed. On the bright side, ground work has been laid to take up the fight again next year.



# SIERRA CLUB

## Explore—Enjoy—Protect

### Growing for Change—Workshop Opportunities

*Lehman Holder, Executive Committee*

Equity, inclusion and justice are critical factors in strengthening Sierra Club’s work to “explore, enjoy and protect” our environment. With that in mind, Washington State Chapter chair Julia Reitan is encouraging Chapter and Group leaders and members to participate in “Growing for Change” workshops.



Photo: [sierraclub.org/planet/2017/05](http://sierraclub.org/planet/2017/05)

The workshops will focus on:

- How to support a culture of equity, inclusion and justice
- How one’s words and actions might contribute to an inequitable culture
- How interpersonal sexism and racism show up and concrete steps to address it
- How systems of oppression (sexism, racism, ageism, etc) show up and how to address them
- How Sierra Club’s work impacts, both positively and negatively, partners and frontline communities
- The history of equity work within Sierra Club and plans for the future

To participate, click on and complete the below application. At least 4 participants from the same local area are required. The Club has found that workshop participants are most successful in applying the learning at the local level if they attend alongside other leaders from their area – including, but not limited to, outings, campaigns, executive committees (ExComs) and activities leaders. Those who attend will also be connected with change makers from surrounding chapters and local entities, learning not only from the course content but from each other as well.

The application can be found at: [www.docs.google.com/sierraclub.org/forms/d/e/1FalpQLScWmWgkzr6fX4rDsHHOUc31uKH4tvK-Rj-VNacgZgFt9ljapQ/viewform](http://www.docs.google.com/sierraclub.org/forms/d/e/1FalpQLScWmWgkzr6fX4rDsHHOUc31uKH4tvK-Rj-VNacgZgFt9ljapQ/viewform) .



# LOO WIT OUTINGS

## Bike, Sea Kayak Outings see Increased Participation

by Lehman Holder, Executive Committee

Loo Wit's ongoing summer cycling and sea kayak outings are experiencing a surge in participation this year.

Bike outings began in mid-April and sea kayak outings in early May. The beginner/novice instructional kayak outings, offered monthly from May through October, have been extremely popular. Bike outings in the local Vancouver area and further afield have also had very good responses.

Upcoming bike outings are on July 23 (Sun), Aug 5 (Sat) and Aug. 26 (Sat). Sea kayak outings are coming on July 30 (Sun), Aug 12 (Sat; instructional) and Aug 20 (Sun). Find outing details and rsvp on



Kayakers paddle towards a lunch break on a recent outing on the East Fork Lewis River. The East Fork has been proposed as a National Wild & Scenic River. Photo: Lehman Holder



Participants on a recent bike outing on the Columbia River Highway State Trail are poised to start pedaling!

Photo: Lehman Holder

Meetup.

**To RSVP for an outing, visit our [meetup page](#). Outings are posted 7-8 days in advance of the scheduled outing date. If you have specific questions email outings leader Lehman Holder at [tripsguy@aol.com](mailto:tripsguy@aol.com). Membership is not required to participate. You're invited to join us, connect to the outdoors, meet some terrific people and get some great exercise!**





## **Candidates Sought for Loo Wit Executive Committee**

*by Lehman Holder, Executive Committee*

Although it's mid-summer, Loo Wit's annual ExCom election is looming this fall. Members who are interested in serving on ExCom are urged to contact Mark Leed, Group chair ([markleed02@gmail.com](mailto:markleed02@gmail.com)), or Lehman Holder, member at large ([tripsguy@aol.com](mailto:tripsguy@aol.com)).

ExCom is the administrative and governing body for Loo Wit. Meetings are held monthly January through July and September through November. Loo Wit's annual holiday party closes the year in December.

Loo Wit's ExCom currently consists of seven members, who focus on conservation/oil and coal, outings, legislative, political and finance (group treasury). Vacancies are expected as some ExCom terms expire at the end of 2017, so now is a perfect time to express interest. To serve on ExCom, a candidate must be a current member of Sierra Club.

## **Don Orange Endorsed for Port Commission**

*by Lehman Holder, Executive Committee*

Loo Wit Group has endorsed local businessman Don Orange for Port of Vancouver commissioner, district 1. Orange opposes the proposed Tesoro-Savage oil terminal at the port, and is also seen as being extremely qualified for the position.

Orange is a local businessman who has spoken many times against the proposed terminal to current port commissioners as well as to the Energy Facility Site Evaluation Council (EFSEC), which is considering whether to recommend approval to Gov. Jay Inslee. He advocates for transparent port policies that will live up to the port's own sustainability plan.

Loo Wit ExCom is also currently working on possible additional endorsements in city council and mayoral races, including Washougal.



# SIERRA CLUB

## Explore—Enjoy—Protect

### Vancouver Oil Terminal and Candidate Don Orange

*Don & Alona Steinke Loo Wit Executive Committee*

Loo Wit has officially endorsed Don Orange for Port Commissioner in Vancouver. This race is not just about one environmentally friendly candidate in a down-ballot race. This is about stopping the largest crude-by-rail project on the continent. This is about blocking the most powerful industry in history.

We cannot avert catastrophic climate change by allowing new fossil fuel infrastructure to be built. Once built, the investment firms will demand a return on investment for the rest of the century. It is probable that Governor Inslee will reject the Tesoro-Vancouver oil terminal and then Tesoro will appeal. In that case, Don Orange and Eric LaBrant could terminate the lease for the project and make the appeals moot. After Tesoro's lease is voided, the Port can talk with better businesses.

We know other fossil companies are seeking to build in the Port of Vancouver and we need two good environmentalists on the Port Commission to promote healthy economic development.

Last year, Tesoro was fined \$425 million for air pollution violations. Of that amount, \$403 million was for pollution abatement equipment. We wonder why that equipment wasn't installed when the project was built. According to the EPA, the chemicals in Tesoro's releases can cause birth defects and cancer.

We are volunteering for door knocking for Don Orange every Saturday at 11:30 am at the Democratic headquarters. **Please join us!**

**Where:** Clark County Dems HQ, 10621 NE Coxley Dr. Ste. 101. This is on the lower level of the building, behind Dairy Queen in Orchards. Take Fourth Plain to the Dairy Queen and turn south. In ½ block, the destination will be on your right.

**When:** Every Saturday until the election.

We'd like 1000 endorsements for Don Orange by August 1.  
Endorse at: [www.DonOrange.com](http://www.DonOrange.com)

Campaigns cost money. Please donate to the Orange campaign via his website.

Whereas there are only 2 candidates for this position, both candidates will automatically advance to the general election in November. Therefore, their names will not appear on the ballot in the primary election coming soon.

**Questions:** Contact Don Steinke: [crVanWash@gmail.com](mailto:crVanWash@gmail.com)



## **Green River Valley Threatened by Exploratory Drilling**

*Mark Leed, chair, Loo Wit*

The pristine Green River Valley, just northeast of Mt. St. Helens Volcanic National Monument, is still threatened by Ascot Resources' proposal to conduct exploratory drilling for industrial minerals. The Green River watershed is popular with anglers, hiker, campers, and equestrians, and the Green has been listed by American Rivers as one the nation's most threatened rivers.

Ascot's current proposal involves exploratory drilling for copper, gold and molybdenum on 900 acres that the US Forest Service acquired using Land and Water Conservation Fund (LWCF) funds. The road building, erosion and constant noise that drilling would bring are incompatible with the intent of the LWCF. The Green River has been designated as a Wild Steelhead Gene Bank, meaning that hatchery fish are excluded to help preserve the system's critical role in the recovery of wild steelhead. Mining in this sensitive area would ruin its recreational and scenic value.

The drilling proposal is being evaluated by two federal agencies: the Forest Service and Bureau of Land Management. What can be done? Please write to Senators Patty Murray and Maria Cantwell and tell them that the Green River Watershed needs to be withdrawn from consideration for development. Letters to The Columbian and other regional newspapers would be helpful as well.

Contact Maria Cantwell here: <https://www.cantwell.senate.gov/contact/>

Contact Patty Murray here: <https://www.murray.senate.gov/public/index.cfm/contactme>

Submit your letter to the Columbian: <http://www.columbian.com/lettertotheeditor/>

Reach out to Jamie Herrera-Beutler here: <https://herrerabeutler.house.gov/contact/>

Write to Jim Peña, Regional Forester for the Pacific Northwest here:

Jim Peña, Regional Forester Pacific Northwest Region

USDA Forest Service

1220 SW Third Avenue

Portland, OR 97204



# Don't Get Left Out in the Cold... Join Us!



Sierra Club Outings are a terrific way to meet new people and enjoy the great outdoors. Whatever your interests - hiking, canoeing or birdwatching - there is an outing for everyone. If you are new to the area, let your local Chapter or Group give you the lay of the land. Join today and become part of America's largest environmental organization offering the most enjoyable outings.

Name \_\_\_\_\_

Address \_\_\_\_\_

City \_\_\_\_\_ State \_\_\_\_\_ Zip \_\_\_\_\_

Phone \_\_\_\_\_

Email \_\_\_\_\_

**YES! I would like to give a gift membership to:**

Gift Recipient \_\_\_\_\_

Address \_\_\_\_\_

City \_\_\_\_\_ State \_\_\_\_\_ Zip \_\_\_\_\_

**Check enclosed. Please make payable to Sierra Club**

Please charge my:  Visa  Mastercard  AMEX

Cardholder Name \_\_\_\_\_

Card Number \_\_\_\_\_ Exp. Date \_\_\_\_ / \_\_\_\_

Signature \_\_\_\_\_

**Join today and receive  
a FREE Sierra Club  
Weekender Bag!**



Membership Categories	Individual	Joint
Special Offer	<input type="checkbox"/> \$ 15	N/A
Standard	<input type="checkbox"/> \$ 39	<input type="checkbox"/> \$ 49
Supporting	<input type="checkbox"/> \$ 75	<input type="checkbox"/> \$ 100
Contributing	<input type="checkbox"/> \$ 150	<input type="checkbox"/> \$ 175
Life	<input type="checkbox"/> \$ 1000	<input type="checkbox"/> \$ 1250
Senior	<input type="checkbox"/> \$ 25	<input type="checkbox"/> \$ 35
Student	<input type="checkbox"/> \$ 25	<input type="checkbox"/> \$ 35
Limited Income	<input type="checkbox"/> \$ 25	<input type="checkbox"/> \$ 35

Contributions, gifts & dues to Sierra Club are tax deductible; they support our effective, citizen based advocacy and lobbying efforts. Your dues include \$ 7.50 for a subscription to SIERRA magazine and \$ 1.00 for your Chapter newsletter.

**Enclose a check and mail to:** Sierra Club,  
PO Box 421041, Palm Coast, FL 32142-1041

**F94Q** 1107



SIERRA  
CLUB  
FOUNDED 1892

Southwest Washington

Sierra Club

Loo Wit Group

PO Box 13

Vancouver, WA 98666-0013