

ARIZONA WILDERNESS

CHECKLIST



WHITE CANYON WILDERNESS © ELIAS BUTLER

WITH PASSAGE OF THE WILDERNESS ACT

IN 1964 the United States charted a course for conservation that was new to the rest of the world. The Wilderness Act defines “Wilderness” as areas where the Earth and its communities of life are left unchanged by people, where the primary forces of nature are in control, and where people themselves are visitors who do not remain. The Act established the National Wilderness Preservation System on federal public lands across America—a system in which individual wilderness units are proposed by citizens who want to protect the natural values that enhance their nearby communities, improve their quality of life, and teach their children about the unaltered natural world. Wilderness designations protect the wildest pieces of our public lands that still exist: special places that look, feel, and function as they may have 200 or more years ago. The Wilderness Act was the first of its kind, anywhere in the world, and today, other nations look to our system to build one of their own.



PUSCH RIDGE WILDERNESS © VANESSA DAVIS

THROUGHOUT 2014 THE NATION WILL CELEBRATE THE 50TH ANNIVERSARY OF THE WILDERNESS ACT, A LANDMARK LAW THAT HAS HELPED PROTECT SOME OF AMERICA’S LAST GREAT WILD COUNTRY. IN ARIZONA THE ACT HAS CREATED A SPLENDID ARRAY OF 90 DIFFERENT WILDERNESS AREAS, FROM CRAGGY MOUNTAIN GEMS IN THE SONORAN DESERT, TO PLUNGING RED ROCK CANYONS, FORESTED PLATEAUS, AND LUSH RIPARIAN WATERWAYS OF THE COLORADO PLATEAU.

RECOGNIZING THE IMPORTANT ROLE THAT ARIZONA PLAYS IN THE TAPESTRY OF OUR WILDERNESS SYSTEM, WE ARE EXCITED TO BUILD ON THE PLETHORA OF ACTIVITIES FOR THE NATIONAL CELEBRATION AND FOCUS ON OUR OWN BACKYARD. GO OUT & EXPLORE WHAT ARIZONA HAS TO OFFER!



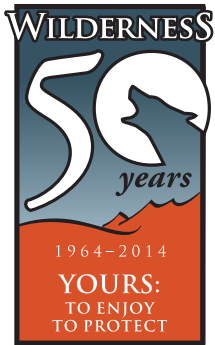
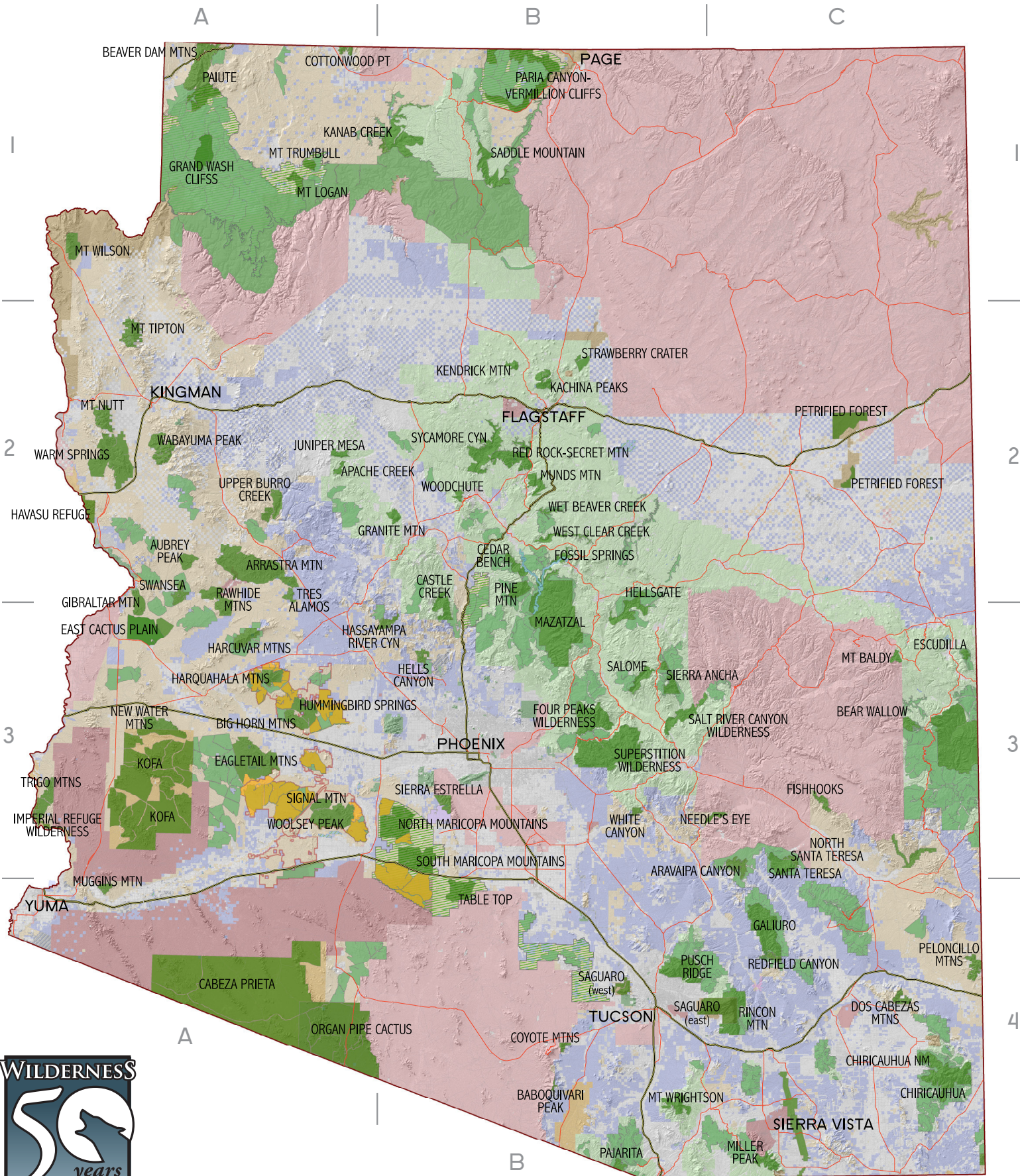
AZWILD50TH.ORG

- ❑ **APACHE CREEK WILDERNESS (A2)**
5,666 Acres • Established 1984 • Managed by the USFS
- ❑ **ARAVAIPA CANYON WILDERNESS (B3)**
19,700 Acres • Established 1984 • Managed by the BLM
- ❑ **ARRASTRA MOUNTAIN WILDERNESS (A2)**
129,800 Acres • Established 1990 • Managed by the BLM
- ❑ **AUBREY PEAK WILDERNESS (A2)**
15,400 Acres • Established 1990 • Managed by the BLM
- ❑ **BABOQUIVARI PEAK WILDERNESS (B4)**
2,040 Acres • Established 1990 • Managed by the BLM
- ❑ **BEAR WALLOW WILDERNESS (C3)**
11,080 Acres • Established 1984 • Managed by the USFS
- ❑ **BEAVER DAM MOUNTAINS WILDERNESS (A1)**
18,667 Acres • Established 1984 • Managed by the BLM
- ❑ **BIG HORN MOUNTAINS WILDERNESS (A3)**
21,000 Acres • Established 1990 • Managed by the BLM
- ❑ **CABEZA PRIETA WILDERNESS (A4)**
803,418 Acres • Established 1990 • Managed by the FWS
- ❑ **CASTLE CREEK WILDERNESS (B2)**
25,215 Acres • Established 1984 • Managed by the USFS
- ❑ **CEDAR BENCH WILDERNESS (B2)**
14,950 Acres • Established 1984 • Managed by the USFS
- ❑ **CHIRICAHUA NAT'L MONUMENT WILDERNESS (C4)**
25,215 Acres • Established 1976 • Managed by the NPS
- ❑ **CHIRICAHUA WILDERNESS (C4)**
87,700 Acres • Established 1964 • Managed by the USFS
- ❑ **COTTONWOOD POINT WILDERNESS (A1)**
6,860 Acres • Established 1984 • Managed by the BLM
- ❑ **COYOTE MOUNTAINS WILDERNESS (B4)**
5,100 Acres • Established 1990 • Managed by the USFS
- ❑ **DOS CABEZAS MOUNTAINS WILDERNESS (C4)**
11,700 Acres • Established 1990 • Managed by the BLM
- ❑ **EAGLETAIL MOUNTAINS WILDERNESS (A3)**
97,880 Acres • Established 1990 • Managed by the BLM
- ❑ **EAST CACTUS PLAIN WILDERNESS (A3)**
14,630 Acres • Established 1990 • Managed by the BLM
- ❑ **ESCUDELLA WILDERNESS (C3)**
5,200 Acres • Established 1984 • Managed by the USFS
- ❑ **FISHHOOKS WILDERNESS (C3)**
10,500 Acres • Established 1990 • Managed by the BLM
- ❑ **FOSSIL SPRINGS WILDERNESS (B2)**
10,434 Acres • Established 1984 • Managed by the USFS
- ❑ **FOUR PEAKS WILDERNESS (B3)**
61,704 Acres • Established 1984 • Managed by the USFS
- ❑ **GALIURO WILDERNESS (C4)**
76,317 Acres • Established 1964 • Managed by the USFS
- ❑ **GIBRALTAR MOUNTAIN WILDERNESS (A3)**
18,790 Acres • Established 1990 • Managed by the BLM
- ❑ **GRAND WASH CLIFFS WILDERNESS (A1)**
37,030 Acres • Established 1984 • Managed by the BLM
- ❑ **GRANITE MOUNTAIN WILDERNESS (B2)**
9,762 Acres • Established 1984 • Managed by the USFS
- ❑ **HARCUVAR MOUNTAINS WILDERNESS (A3)**
25,050 Acres • Established 1990 • Managed by the BLM
- ❑ **HARQUAHALA MOUNTAINS WILDERNESS (A3)**
22,880 Acres • Established 1990 • Managed by the BLM
- ❑ **HASSAYAMPA RIVER CANYON WILDERNESS (B3)**
12,300 Acres • Established 1990 • Managed by the BLM
- ❑ **HAVASU WILDERNESS (A2)**
17,801 Acres • Established 1990 • Managed by the FWS
- ❑ **HELLS CANYON WILDERNESS (B3)**
9,951 Acres • Established 1990 • Managed by the BLM
- ❑ **HELLSGATE WILDERNESS (B3)**
37,440 Acres • Established 1984 • Managed by the USFS
- ❑ **HUMMINGBIRD SPRINGS WILDERNESS (A3)**
31,200 Acres • Established 1990 • Managed by the BLM
- ❑ **IMPERIAL REFUGE WILDERNESS (A3)**
15,056 Acres • Established 1990 • Managed by the FWS
- ❑ **JUNIPER MESA WILDERNESS (A2)**
7,406 Acres • Established 1984 • Managed by the USFS
- ❑ **KACHINA PEAKS WILDERNESS (B2)**
18,616 Acres • Established 1984 • Managed by the USFS
- ❑ **KANAB CREEK WILDERNESS (B1)**
70,460 Acres • Established 1984 • Managed by the BLM & USFS
- ❑ **KENDRICK MOUNTAIN WILDERNESS (B2)**
6,510 Acres • Established 1984 • Managed by the USFS
- ❑ **KOFA WILDERNESS (A3)**
516,200 Acres • Established 1990 • Managed by the FWS
- ❑ **MAZATZAL WILDERNESS (B3)**
252,390 Acres • Established 1964 • Managed by the USFS
- ❑ **MILLER PEAK WILDERNESS (C4)**
20,228 Acres • Established 1984 • Managed by the USFS
- ❑ **MOUNT BALDY WILDERNESS (C3)**
7,079 Acres • Established 1970 • Managed by the USFS
- ❑ **MOUNT LOGAN WILDERNESS (A1)**
14,650 Acres • Established 1984 • Managed by the BLM
- ❑ **MOUNT NUTT WILDERNESS (A2)**
28,080 Acres • Established 1990 • Managed by the BLM
- ❑ **MOUNT TIPTON WILDERNESS (A2)**
31,380 Acres • Established 1990 • Managed by the BLM
- ❑ **MOUNT TRUMBULL WILDERNESS (A1)**
7,880 Acres • Established 1984 • Managed by the BLM

- ❑ **MOUNT WILSON WILDERNESS (A1)**
23,900 Acres • Established 1990 • Managed by the BLM
- ❑ **MT. WRIGHTSON WILDERNESS (B4)**
25,260 Acres • Established 1984 • Managed by the USFS
- ❑ **MUGGINS MOUNTAIN WILDERNESS (A4)**
7,711 Acres • Established 1990 • Managed by the BLM
- ❑ **MUNDS MOUNTAIN WILDERNESS (B2)**
24,411 Acres • Established 1984 • Managed by the USFS
- ❑ **NEEDLE'S EYE WILDERNESS (C3)**
8,760 Acres • Established 1990 • Managed by the BLM
- ❑ **NEW WATER MOUNTAINS WILDERNESS (A3)**
24,600 Acres • Established 1990 • Managed by the BLM
- ❑ **NORTH MARICOPA MOUNTAINS WILDERNESS (B3)**
63,200 Acres • Established 1990 • Managed by the BLM
- ❑ **NORTH SANTA TERESA WILDERNESS (C3)**
5,800 Acres • Established 1990 • Managed by the BLM
- ❑ **ORGAN PIPE CACTUS WILDERNESS (A4)**
312,600 Acres • Established 1978 • Managed by the NPS
- ❑ **PAIUTE WILDERNESS (A1)**
87,900 Acres • Established 1984 • Managed by the BLM
- ❑ **PAJARITA WILDERNESS (B4)**
7,553 Acres • Established 1984 • Managed by the USFS
- ❑ **PARIA CANYON-VERMILLION CLIFFS WILDERNESS (B1)**
110,816 Acres • Established 1984 • Managed by the BLM
- ❑ **PELONCILLO MOUNTAINS WILDERNESS (C4)**
19,440 Acres • Established 1990 • Managed by the BLM
- ❑ **PETRIFIED FOREST NATIONAL WILDERNESS (C2)**
50,260 Acres • Established 1970 • Managed by the NPS
- ❑ **PINE MOUNTAIN WILDERNESS (B2)**
2,061 Acres • Established 1972 • Managed by the USFS
- ❑ **PUSCH RIDGE WILDERNESS (B4)**
56,933 Acres • Established 1978 • Managed by the USFS
- ❑ **RAWHIDE MOUNTAINS WILDERNESS (A3)**
38,470 Acres • Established 1990 • Managed by the BLM
- ❑ **RED ROCK-SECRET MOUNTAIN WILDERNESS (B2)**
47,194 Acres • Established 1984 • Managed by the USFS
- ❑ **REDFIELD CANYON WILDERNESS (C4)**
6,600 Acres • Established 1990 • Managed by the BLM
- ❑ **RINCON MOUNTAIN WILDERNESS (C4)**
38,590 Acres • Established 1984 • Managed by the USFS
- ❑ **SADDLE MOUNTAIN WILDERNESS (B1)**
40,539 Acres • Established 1984 • Managed by the USFS
- ❑ **SAGUARO WILDERNESS (B4)**
70,905 Acres • Established 1976 • Managed by the NPS
- ❑ **SALOME WILDERNESS (B3)**
18,531 Acres • Established 1984 • Managed by the USFS
- ❑ **SALT RIVER CANYON WILDERNESS (B3)**
32,101 Acres • Established 1984 • Managed by the USFS
- ❑ **SANTA TERESA WILDERNESS (C3)**
26,780 Acres • Established 1984 • Managed by the USFS
- ❑ **SIERRA ANCHA WILDERNESS (B3)**
20,850 Acres • Established 1964 • Managed by the USFS
- ❑ **SIERRA ESTRELLA WILDERNESS (B3)**
14,400 Acres • Established 1990 • Managed by the BLM
- ❑ **SIGNAL MOUNTAIN WILDERNESS (A3)**
13,350 Acres • Established 1990 • Managed by the BLM
- ❑ **SOUTH MARICOPA MOUNTAINS WILDERNESS (B3)**
60,100 Acres • Established 1990 • Managed by the BLM
- ❑ **STRAWBERRY CRATER WILDERNESS (B2)**
10,743 Acres • Established 1984 • Managed by the USFS
- ❑ **SUPERSTITION WILDERNESS (B3)**
159,757 Acres • Established 1964 • Managed by the USFS
- ❑ **SWANSEA WILDERNESS (A2)**
16,400 Acres • Established 1990 • Managed by the BLM
- ❑ **SYCAMORE CANYON WILDERNESS (B2)**
55,937 Acres • Established 1972 • Managed by the USFS
- ❑ **TABLE TOP WILDERNESS (B4)**
34,400 Acres • Established 1990 • Managed by the BLM
- ❑ **TRES ALAMOS WILDERNESS (A3)**
8,300 Acres • Established 1990 • Managed by the BLM
- ❑ **TRIGO MOUNTAIN WILDERNESS (A3)**
30,300 Acres • Established 1990 • Managed by the BLM
- ❑ **UPPER BURRO CREEK WILDERNESS (A2)**
27,440 Acres • Established 1990 • Managed by the BLM
- ❑ **WABAYUMA PEAK WILDERNESS (A2)**
38,944 Acres • Established 1990 • Managed by the BLM
- ❑ **WARM SPRINGS WILDERNESS (A2)**
112,400 Acres • Established 1990 • Managed by the BLM
- ❑ **WEST CLEAR CREEK WILDERNESS (B2)**
15,238 Acres • Established 1984 • Managed by the USFS
- ❑ **WET BEAVER WILDERNESS (B2)**
6,155 Acres • Established 1984 • Managed by the USFS
- ❑ **WHITE CANYON WILDERNESS (B3)**
5,790 Acres • Established 1990 • Managed by the BLM
- ❑ **WOODCHUTE WILDERNESS (B2)**
5,833 Acres • Established 1984 • Managed by the USFS
- ❑ **WOOLSEY PEAK WILDERNESS (A3)**
64,000 Acres • Established 1990 • Managed by the BLM

For additional information and interactive maps, visit

WILDERNESS.NET



AZ WILDERNESS AREAS	90
AZ WILDERNESS ACRES	4,528,913 ACRES
LARGEST WILDERNESS AREA	CABEZA PRIETA WILDERNESS
SMALLEST WILDERNESS AREA	BABOQUIVARI WILDERNESS