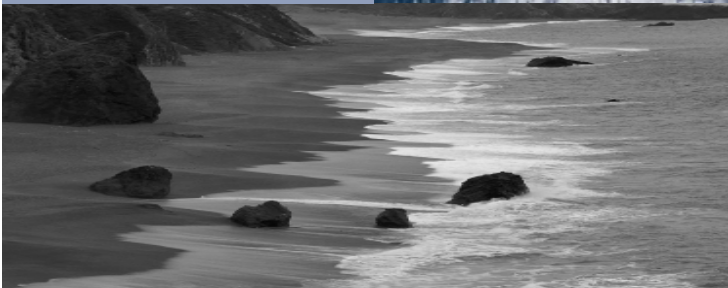
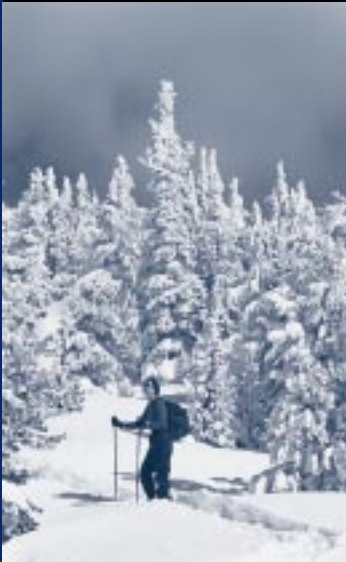
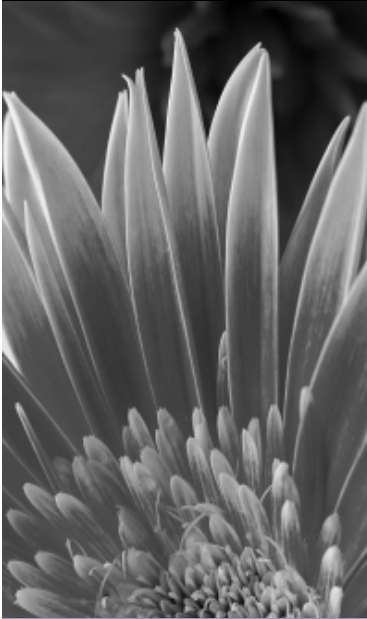


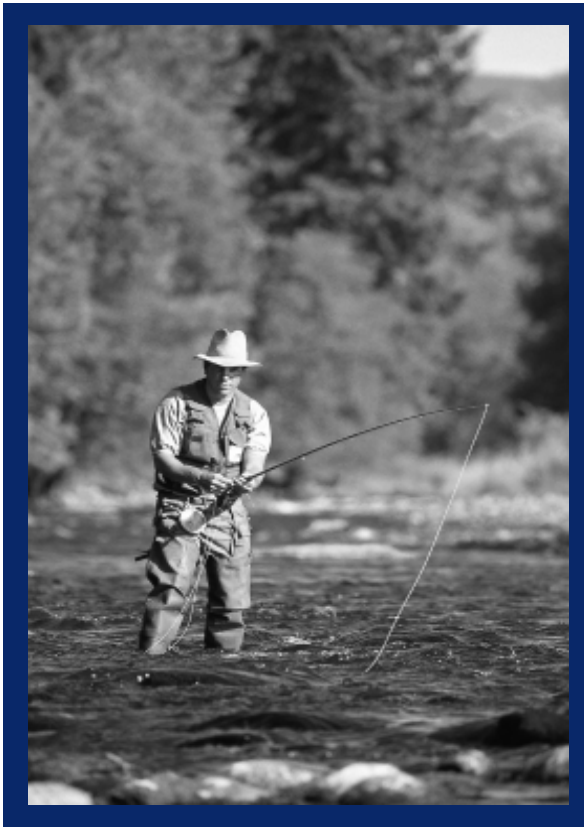


SIERRA
CLUB
FOUNDED 1892

The Mackinac Election 2000

Hansen Clarke Steve Bieda Paul Gielegem
 Mike Switalski David Bonior *John Hieftje*
 Gretchen Whitmer *Aldo Vagnozzi* *Susan Kay Smith*
 Irvin Droste *Janis Bobrin* Lynn Rivers
 Dale Kildee *Cheryl Hadsall* *Julia Dennis*
David Oppliger Samuel Buzz
 Mike Delling Amanda Howe Gloria Schermesser
 Chris Kolb Raymond Basham
 Gilda Jacobs William Callahan
 Al Gore Ruth Anne Janmick
 Dianne Byrum
 Vera Rison
 Mark Schauer Joe Lieberman
 Derrick Hale Dave Woodward Patricia Lockwood
 John Conyers Sander Levin
 Matthew Frumin Belda Garza Rose Bogardus
 Matthew Hogan John Hansen
 Debbie Stabenow Jack Minore
 Nancy Quarles
 John Stewart Patrick Lindemann John Veenstra





The Mackinac Quarterly
The Mackinac (USPS 396610) (ISBN 0744-5288) is published quarterly (February, May, August, November) by the Sierra Club's Mackinac Chapter, 109 East Grand River Avenue, Lansing, Michigan 48906. Periodical postage is paid at Lansing, Michigan.

Postmaster: Send address changes to The Mackinac, Sierra Club, 109 East Grand River Avenue, Lansing, Michigan 48906.

Annual dues for the Sierra Club are \$35 of which \$1 is for a subscription to The Mackinac. Non-member subscriptions are available for \$10 per year from the Mackinac Chapter Office.

The Mackinac reaches more than 17,000 members and friends of the Sierra Club in Michigan. Both display and classified advertising is accepted. For a current ad rate card, write or call: Gary Semer, Business Manager, 449 Pacific, Plymouth, MI 48170; 734-453-4443.

We reserve the right to refuse advertising which we feel conflicts with the goals and purposes of the Club.

Bylined articles represent the research and opinions of the author and not necessarily those of the Sierra Club or the Mackinac Chapter.

Mackinac Chapter Office:

Phone: 517-484-2372
Fax: 517-484-3108
Email: mackinac.chapter@sierraclub.org
Internet: www.sierraclub.org/chapters/mi

Mackinac Editor: Davina Pallone

Contributing Editors: Alison Horton
Anne M. Woiwode

Business Manager: Gary Semer

Calendar Editor: Bob Volz

Editorial Board: Lydia Fischer Helen LeBlanc

Mike Johnson Fred Townsend

Sue Kelly

Election Issue Editor Stephanie Fowler

The Mackinac Election 2000

Michigan Sierra Club

Features

Welcome to Mackinac Election Edition	4
What's At Stake, the Supreme Court	5
Grass Roots Campaign Finance Reform	6
Debbie Stabenow Up Close	7
World of Difference, Al Gore and George W. Bush	8
Find Your Candidate	10
Candidates in Detail	12
On the Record	19

features



8



7



6

Welcome...

To the special Election 2000 edition of the Mackinac Newsletter.

This is a special issue of The Mackinac with information for **YOU**. In this issue are candidates the Sierra Club has endorsed who will be on the ballots in Michigan.

Sierra volunteers have been very busy for months. Group and Chapter political committees have reviewed the records of the candidates, have conducted interviews, have sent and reviewed questionnaires, and have looked at public records for leadership and votes on the issues we have had before us in the last few years.

Sierra Club leaders have asked a number of important questions about candidates running for office such as, "Has this candidate *voted in support of the environment* on issues of clean air and water, protection of forests and lakes and streams, funding for enforcement of environmental laws, and right-to-know legislation?" "Does the candidate support public hearings and public access to decision makers?" "Is the candidate **ACCESSIBLE** to the people?" "Will this person *protect our environment, our families, and our future?*" If the answer to these questions is **yes** then, the political committees asked the elected executive committees of their groups and the Mackinac Chapter to approve an endorsement of each. All of the candidates have also been approved for endorsement by the National Sierra Club Political Committee.

protection of forests and lakes and streams

Be Sure To VOTE

we can make a difference

Now it's up to you to do two things. The first is to be sure to VOTE in this important election. The second is to help to get out the message about the candidates that are good to the environment. If each of us influence just one additional person, we will double our voting power! Can we make a difference? You bet we can and have. We have helped some of our finest environmental leaders in Michigan and the country get elected and reelected. Volunteers have gone door-to-door for endorsed candidates, have helped with mailings, have made contributions to campaigns, have worked as volunteers at headquarters and all to help **Get Out the Vote**.

When we vote, we can make a difference. Many elections are won or lost by less than 1% of the vote. In every election there are a few seats lost by less than one or two hundred votes. Every vote does count! We can be the margin of difference that sends candidates to the legislature who are knowledgeable about environmental issues and will work to pass and implement good environmental law.

See you at the polls.

Let's have a GREAT Election Day!

Gwen Nystuen
Political Chair

FOR OUR FUTURE

enforcement of environmental laws

right to know legislation

What's At Stake

the supreme court

MICHIGAN SUPREME COURT ELECTIONS: WHAT'S AT STAKE FOR THE ENVIRONMENT

ALISON HORTON, DIRECTOR

State courts play a powerful role in shaping our environmental future. They are influential in interpreting and enforcing federal laws such as the Clean Air Act and the Clean Water Act because states have assumed authority for implementing those laws. In Michigan we also have a significant body of environmental law – in particular the Michigan Environmental Protection Act (MEPA) and our Wetlands Protection Act which it falls to the state courts to interpret. Additionally, zoning, land use, tort and nuisance statutes are largely implemented by the state courts.

Environmental advocates in Michigan see the makeup of the state Supreme Court as vital to shaping the state's behavior on environmental protection. Business and industry special interests also have not missed the importance of the Supreme Court and they and Governor Engler have exerted enormous influence in the last few years over the way the court is constituted.

Governor Engler has appointed three of the seven justices since 1997 – Clifford Taylor in 1997, who was then elected for the remainder of a term in 1998, and Robert Young and Stephen Markman in 1999. All are now incumbents up for election this November. Observers note that Engler brings the same philosophy to his Supreme Court appointments that has guided the state's Department of Environmental Quality down the road of rollbacks in implementation and enforcement of environmental laws.

The Governor has not been alone in shaping the court. Across the nation, conservative special interests that lobby against environmental protection have mounted increasingly sophisticated campaigns to reshape state judiciaries to their liking. Ana-

lysts have tracked the U.S. Chamber of Commerce – which consistently lobbies against environmental protection at the federal level – in its campaign which has so far targeted a handful of states including Michigan and spent millions of dollars to influence judicial elections. An Oklahoma-based group formed in the mid-1990's with close financial ties to oil and gas, chemical and agribusiness interests is working across the country and helping to fund activity in Michigan judicial elections.

The campaigns to change the makeup of state benches to assure a "business friendly" climate have been succeeding state by state. Business interests, including major polluting industries and development interests, have been working hand in hand with and heavily funded by these out-of-state operations. Today their success in Michigan is evident, where five of the seven members of the Michigan court are now closely aligned politically with Governor Engler.

Challenging incumbents Taylor, Young and Markman, who were all nominated to run by the Republican state convention, are Judge Thomas Fitzgerald (currently serving on the Court of Appeals), Marietta Robinson (a Detroit attorney) and Judge Edward Thomas (a Wayne County Circuit Court judge). All were nominated by the Democrats at their state convention. Since Supreme Court races are nonpartisan, party affiliations will not appear on the ballot.

Since the makeup of the court shifted so dramatically with Engler's latest appointment at the end of 1999, the top court has not ruled on major environmental cases. However, two important state court cases in recent years, in which the Sierra Club was involved and both in the arena of "takings" law, raise questions troubling to environmentalists.

In the case of K&K Construction, challenging denial of a permit for wetlands development in Oakland County, the state Court of Appeals ruled in favor of the developer and the lower court ruling awarding him \$5 million for the denial of a permit for development of wetlands on about one-third of his property. Significantly, Justice Taylor sat on the appeals court at that time and was party to the ruling. When the Supreme Court overturned the appeals court decision in the K&K case in 1998, the makeup of the court was different and Taylor, newly appointed, did not participate, having participated in the lower court ruling. The question remains, how would the incumbent court rule on the K&K case, today?

In the Nordhouse Dunes lawsuit, involving oil company efforts to drill for oil in that Lake Michigan coastal wilderness area, Governor Engler personally negotiated a \$90 million settlement with the oil companies – major contributors to the Republican Party — before the case could

SUPREME COURT CONTINUED

be appealed to the Supreme Court in 1995. Had the takings issues involved in the Nordhouse Dunes case gone to the Supreme Court then, how would the court have ruled – and if the case went to them today, how would the court rule? We cannot know for sure, but with the Governor's involvement in changing the makeup of the court the outcomes would likely be very different.

The 2000 Supreme Court elections are expected to be the most expensive ever in Michigan. Corporate money which flowed heavily into races in 1998, will flow even more heavily this year. Large PAC contributions from members of the Michigan Chamber of Commerce will be influential. An organization known as M-LAW (Michigan Lawsuit Abuse Watch) formed several years ago by Michigan trade associations such as the Chamber of Commerce and Washington, D.C. based operations such as the American Tort Reform Association, heavily funded by tobacco and insurance companies, put hundreds of thousands

of dollars of corporate money into media and “pro-business” ratings, including environmental issues, of judges in the 1998 election. They can be expected to do more of the same this year in support of Taylor, Young and Markman in their races against Fitzgerald, Robinson and Thomas.

The Sierra Club in Michigan has not undertaken to make endorsements in the 2000 Supreme Court races, where documenting candidates' positions on environmental issues is more complex than in the legislative arena. However, the Mackinac Chapter urges Sierra Club members in Michigan to pay close attention to the Supreme Court races. The makeup of the state's top court can have enormous impact on our environmental future in the Great Lakes state for decades to come.



GRASS ROOTS CAMPAIGN FINANCE REFORM ROLLING IN MICHIGAN THOMAS NELSON, CMG POLITICAL CHAIR

By now, everyone has heard the big reasons why so many environmentalists are in support of meaningful campaign finance reform: *big oil, big pig, big mining, other big polluters = big campaign contributions*. Despite numerous polls showing that the vast majority of Americans support environmental protection including a 1998 Gallup Poll that stated that nearly 70% of Americans rate environmental protection even higher than economic growth, Congress has frequently allowed the debate on the environment to be convoluted by special interest dollars. According to the nonpartisan Center for Responsive Politics, these special interests outspent environmental organizations by a 27 to 1 margin in the last decade. Additionally, in the 1998 elections, the ratio jumped to 50 to 1. **Big reasons indeed.**

In supporting reform as a crucial element in leveling the playing field on environmental issues, the National Sierra Club issued a policy statement last year supporting four fundamental means of campaign finance reform for congressional elections. These include public financing for campaigns, limits on campaign spending, limits on “soft money” contributions to political parties, and **NO LIMITS ON THE ABILITY OF NONPROFIT ORGANIZATIONS TO COMMUNICATE WITH THE PUBLIC ABOUT POLICY ISSUES**. The Sierra Club has signed letters in partnership with a coalition of groups including Public Campaign, US PIRG, Public Citizen and several church organizations.

In Michigan, the lead organizing body for this effort has been the Michigan Campaign Finance Network (MCFN). Following the lead of other states like Arizona, Maine, Massachusetts and Vermont which have already enacted CFR legislation, the MCFN has been working to broaden a core coalition of reform-minded grass-roots organizations to *support a ballot initiative for 2002*. Although it seems a long way off, there is much hard work to be done prior to election day in 2002, including the collection of thousands of petition signatures. Although the Sierra Club has not yet formally endorsed the Michigan initiative, Mackinac Chapter members have been and are continuing to work with the MCFN.

DEBBIE STABENOW ENDORSED BY SIERRA CLUB FOR U.S. SENATE

As a leader in state government and now as a Congresswoman, she has always had an 80% or better voting record on environmental legislation advocating pollution prevention, and government access for citizens.

Her office has been responsive to our local environmental concerns as well, offering us greater access to federal agencies that control local environmental decisions. She supported us in the fight to regulate emissions from a local asphalt company and assisted us in maneuvering through the Federal Energy Regulatory Commission on pipeline issues. In contrast, her opponent Spencer Abraham has never received higher than a 13% voting record on environmental issues often voting against such things as prohibiting mountaintop mining and funding renewable energy programs. Spencer Abraham is the #1 recipient of campaign contributions from polluters of any member of the U. S. Senate or House (Environmental Working Group). Debbie Stabenow has earned our endorsement and our votes in November.



Protecting families from environmental threats has always been a priority for Debbie Stabenow



THE RECORD

- Voted to regulate the dumping of mining waste on our public lands.
- Voted to protect public involvement in decisions on wetlands destruction
- Voted to protect fish and wildlife.
- Voted against linking rural school funding to timber sales off of local public lands.
- Voted against taxpayer subsidies for logging of public lands.
- Voted against allowing the oil industry to avoid paying royalties for drilling on public lands.
- Voted against increased taxpayer subsidies for logging in Alaska's Tongass National Forest.

CAMPAIGN FINANCE CONTINUED

In late July, the Michigan effort received a significant financial boost from the Chicago based Joyce Foundation. In awarding the large 16 month, grant, a Foundation spokesperson cited ongoing efforts of the MCFN and John McCain's primary victory in Michigan as evidence of growing support for CFR here. MCFN intends to utilize these funds to build a staff, establish a more formal organizational infrastructure and expand its research and educational effort.

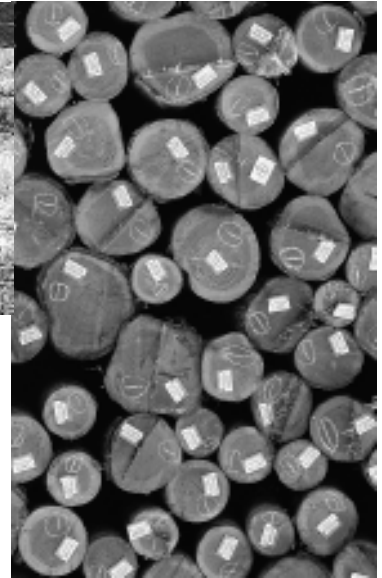
The MCFN has spent a great deal of energy in the last several months working with the media for **public education**, **COALITION BUILDING**, and **community organizing**. Currently there are burgeoning public outreach teams working with the MCFN in over a dozen Michigan counties including Allegan, Barry, Calhoun, Genesee, Grand Traverse, Isabella, Kalamazoo, Kent, Macomb, Midland, Oakland, Ottawa, St. Clair, Washtenaw and Wayne Counties.

Those interested in *joining the effort* in one of these counties, **INITIATING** a new one in their own, or simply getting the MCFN publication, Campaign Finance Talk, should contact Dave Hogg at (248)475-8921 or dwhogg@concentric.net, or Johnston Mitchell at (517) 482-7198 or by e-mail at cfn00jmm@pilot.msu.edu. The MCFN is also launching a listserve this fall. Interested persons can sign on by forwarding their e-mail address.

special
interest

THERE IS A WORLD OF DIFFERENCE, AL GORE OR GEORGE W. BUSH?

GWEN NYSTUEN, MACKINAC CHAPTER POLITICAL CHAIR



In August, at a press conference on the banks of the Grand River in Grand Rapids, Al Gore accepted the Sierra Club's endorsement from Club President Robbie Cox. The decision to announce the Sierra Club's endorsement here in Michigan acknowledges how important Michigan is in the race for President. We have an opportunity to make an enormous difference.

The uncertainties of winter and spring are past. We now know that either Al Gore or George W. Bush will be the next President of the United States. Even the most ardent third party activists concede that there is no way a third party candidate can be elected. As Robert Kennedy, Jr., wrote in a New York Times editorial, "Ralph Nader is my friend and hero, but his Green Party candidacy for the Presidency could torpedo efforts to address the nation's most important environmental challenges. The threat, of course, is that Mr. Nader's candidacy could siphon votes from Al . . ." On September third, Jack Nelson, Chief Washington Correspondent for the Los Angeles Times, wrote in an editorial entitled "Gore's Environmental Roots Finally Take Hold of Mainstream. . .Ralph Nader still attracts the most ardent activists, but the Democratic nominee has solidified support as *voter concern for the planet increases.*"

Nelson reported that, "In the past, environmental issues have ranked relatively low on the list of voter concerns in such states as Pennsylvania, Ohio, Michigan, Indiana and Illinois. But a recent poll of voters in this region for Freedomchannel.com, a nonpartisan Web site, showed that, while pocketbook areas such as health care still lead the list, the environment now ranks among the top five issues of greatest concern.

You want Differences?

CHOICE OF VICE PRESIDENT: Joe Lieberman has a League of Conservation Voter average vote record of 95% pro-environment; Dick Cheney, a former U.S. House member, received a 13% score.

SUPREME COURT: The next President will determine the future direction of the Court. Who will be appointed to make final decisions on the environment?

CLIMATE CHANGE: Al Gore negotiated the Kyoto agreement to reduce global warming; supports reduction in greenhouse-gas emissions. Bush believes global warming is real, but opposes Kyoto Protocol.

CAMPAIGN FINANCE REFORM: Gore supports McCain-Feingold bill to ban soft-money donations to parties. Proposes quasi-public financing of campaigns. Bush opposes McCain-Feingold. Opposes public financing of campaigns.

ARCTIC NATIONAL WILDLIFE REFUGE: Gore supports full wilderness protection for the

FOLLOW THE MONEY

A chart in the Sept./Oct. issue of *Sierra* shows campaign contributions as of June 1, 2000.

Agribusiness:

Bush \$2,148,624
Gore \$240,350

Oil & Gas:

Bush \$1,463,799
Gore \$95,460

Construction:

Bush \$3,472,821
Gore \$920,938

Real Estate:

Bush \$3,661,372
Gore \$1,213,310

Automotive:

Bush \$1,019,581
Gore \$79,085

Labor:

Bush \$17,750
Gore \$78,800

WORLD OF DIFFERENCE CONTINUED

refuge. Bush advocates oil drilling in the refuge.

FORESTS: Gore supports Clinton's proposal to protect 40 million acres of roadless forest and would extend it to include Alaska's Tongass National Forest. Bush vows to reverse Clinton's proposals and supports increased timber sales in national forests.

CLEAN AIR: Gore supports stricter clean-air health standards. Bush appointees in Texas lobby to weaken federal enforcement of the Clean Air Act. Houston leads the nation in smog.

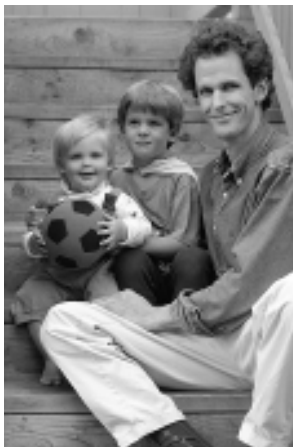
This list can go ON and ON and ON! It is reported that Brent Blackwelder, President of Friends of the Earth, which endorsed Senator Bill Bradley in the Democratic primary said, "There's a Grand Canyon of difference between Gore and Bush on the environment."

Executive Director of the Sierra Club, Carl Pope, wrote in the Sierra, "If voting is viewed strictly as a mirror of personal preference, then third parties — and fourth, fifth, and twenty-seventh parties — are well and good. But voting is also about selecting a government that will make a practical difference in the world, and the reality of third-party candidates in national winner-take-all systems like those in the United States or Britain is that they strengthen their enemies at the expense of their friends."

Let's remind all our friends that there is a world of difference between the two real choices we have to lead our nation. This year we have the opportunity to vote for an environmentalist for President! Let's do it. We can make a difference.

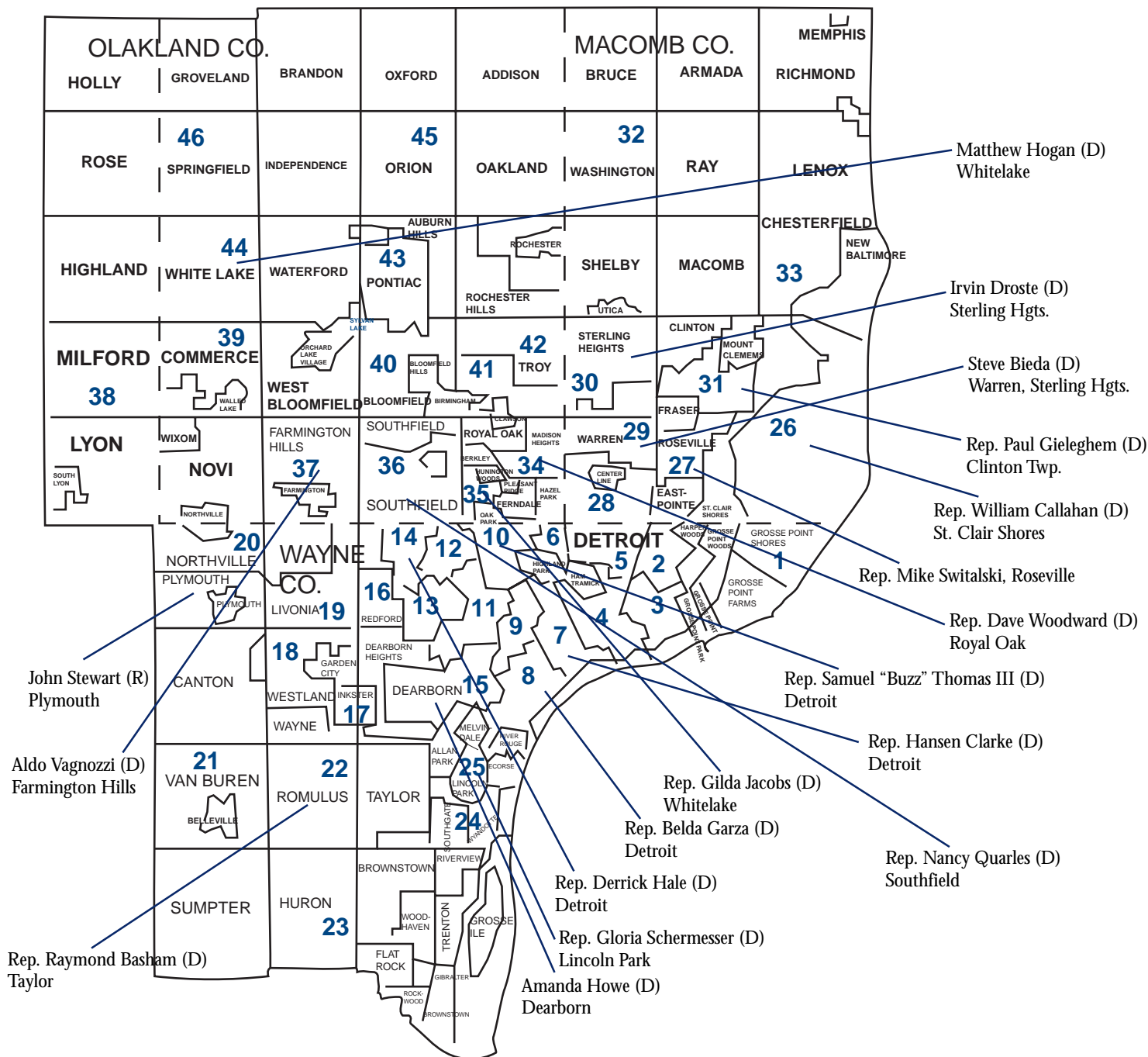
the
difference

Executive Director of the Sierra Club, Carl Pope, wrote in the Sierra, "If voting is viewed strictly as a mirror of personal preference, then third parties — and fourth, fifth, and twenty-seventh parties — are well and good. But voting is also about selecting a government that will make a practical difference in the world, and the reality of third-party candidates in national winner-take-all systems like those in the United States or Britain is that they strengthen their enemies at the expense of their friends."



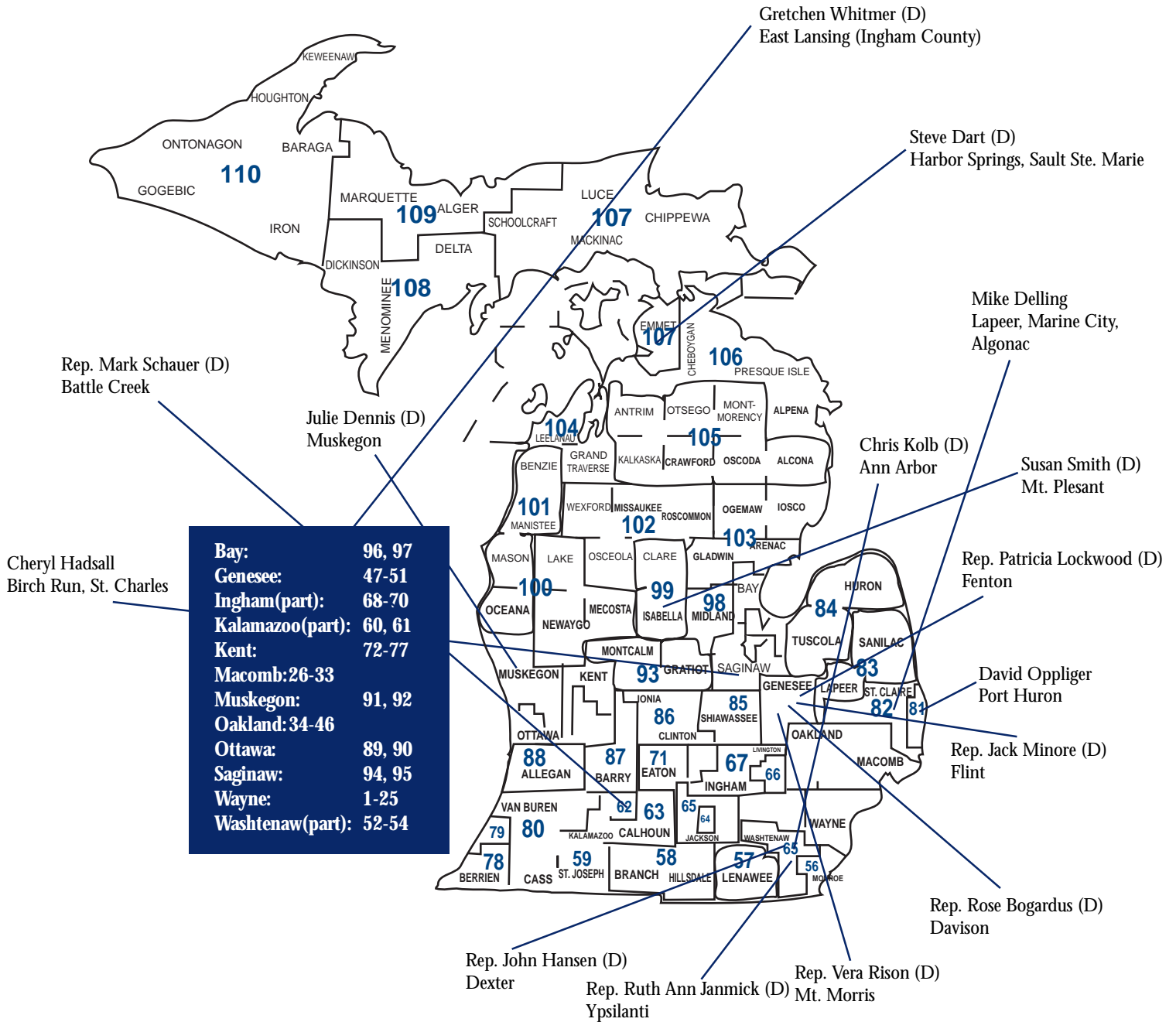
for your family

find *your candidate*
Sierra Club Endorsed



*Michigan House Districts
Metro Detroit Area*

find *your candidate*
Sierra Club Endorsed



Greater Michigan House Districts

in detail **The** *Sierra Club Endorsed* **candidates**

“My Vote Doesn’t Make a Difference.”

False! A high percentage of elections are won or lost by less than one or two percentage points - many by only a few hundred votes. It happens every year right here in Michigan. The Mackinac Chapter has over 17,000 members, and thousands of us are registered to vote. When we vote, we make a difference.

What is a Sierra Club Endorsement?

A Sierra Club endorsement is a way of recognizing a candidate for good environmental work. We have studied their records and found that they support our issues.

“My Candidate Didn’t Vote Right on Air Quality?”

Neither the League of Conservation Voters nor the Sierra Club considers any single issue or vote to be a litmus test. What is important is the overall record.

“I know a candidate that is really good on the environment and the Club hasn’t made an endorsement”

You’re right. Often we do not have sufficient information to recommend an endorsement of one candidate out of several. Most of our endorsements are for candidates who have built up a record of public service and votes. We always welcome more information on candidates with strong environmental backgrounds.

To volunteer in the political program, call our chapter office at 517-484-2372 or Gwen Nystuen, Political Committee Chair, at 734-665-7632.

United States Senate

Rep. Debbie Stabenow (D)



Protecting families from environmental threats has always been a priority for Debbie Stabenow. As a leader in state government and now as a Congresswoman, she has always had an 80% or better voting record on environmental legislation advocating pollution prevention, and government access for citizens. Her office has been responsive to our local environmental concerns as well, offering us greater access to federal agencies that control local environmental decisions. She supported us in the fight to regulate emissions from a local asphalt company and assisted us in maneuvering through the Federal Energy Regulatory Commission on pipeline issues.

United States House of Representatives

State Senator Dianne Byrum (D)
Lansing, Eighth District



State Senator Byrum is running for the Congressional seat being vacated by Debbie Stabenow, candidate for the U.S. Senate. Byrum has served two terms in the Michigan House and is completing a second term in the Senate. She has a very good voting record on the environment as a state senator. She believes the top environmental issues in her district are water quality and urban sprawl. In sharp contrast Byrum’s opponent, also a state senator, has a 0% environmental vote record. Byrum believes that CAFO’s (factory farms) must be regulated to control the sewage pollution they create.

make a splash



vote

in detail
The candidates

She supports legislation to protect wetlands and watersheds and improve water quality. The contest for the 8th Congressional District is considered one of the closest in the entire country in this election.

Rep. Dale Kildee (D)
 Flint, Ninth District
 Incumbent



Congressman Kildee is a longtime environmental friend and advocate who is currently working with the Nipissing Group in their efforts to clean-up the Flint River and protect the watershed. He is known for his efforts in the U.S. House of Representatives for protecting parks, forests, wilderness and wild rivers. He is always accessible and has worked on such issues as resolving inholding disputes in our Sylvania Wilderness Area and acquisition of a valuable privately held island for the Forest Service in Michigan. In this session he has voted to block the environmental riders that have been used to pass anti-environmental provisions that could never pass on their own. He has an outstanding voting record on the environment for this session.

Rep. David E. Bonior (D)
 Mt. Clemens, Tenth District
 Incumbent



Twelve term Congressman David Bonior has continued to work closely with the Sierra Club on environmental issues. Once again Bonior, the Minority whip in the House, has led efforts to block anti-environmental riders and amendments to bills going through the House. He has worked to prevent cuts in the Land and Water Conservation Fund, to limit dumping of mining waste on public lands, and to protect wetlands. He votes for campaign finance reform and against efforts to weaken national and international environmental laws. In this session he has an outstanding record once again.

Matt Frumin (D)
 Eleventh District

Mr. Frumin is challenging one of the worst members of Congress on the environment in Rep. Joe Knollenberg. Mr. Frumin had been working for the Under Secretary of State for Global Affairs before returning home to enter this race. In his capacity in the State Department, Mr. Frumin was part of the U.S. delegation to Kyoto negotiations on global warming. He has considerable background on the climate change issue and is an advocate of using U.S. foreign policy to promote worldwide environmentally responsible policies. Mr. Frumin is making the environment one of his main issues in his effort to dethrone Rep. Knollenberg.

Rep. Sander Levin (D)
 Southfield, Twelfth District
 Incumbent



Sander Levin has had an excellent pro-environment vote record throughout his career in Congress. He is noted for

efforts on environmental issues affecting women and children. This past term he supported campaign finance reform, protection of wetlands, and opposed cuts in the Land and Water Conservation Fund. He has a near perfect record on our score sheet on the environment. In this past session he could be counted on to block efforts to weaken environmental standards when attempts to pass anti-environmental riders and amendments were brought to the House. He voted to restore cuts in environmental programs in the FY 2000 Budget.

Rep. Lynn Rivers (D)
 Ann Arbor, Thirteenth District
 Incumbent



Completing her third term, Lynn Rivers has distinguished herself as an outspoken defender of the environment, the public's right-to-know, and our right to clean water and air and a clean environment for our families and our future. She has voted to protect our parks, national forests and wildernesses and cosponsored numerous pro-environment bills. She was recognized by the Mackinac Chapter with the 1997 Environmental Legislator of the Year Award. She continues to be one of the most accessible representatives meeting frequently with her constituents. She voted in this session to limit dumping of mining waste on public land, to protect wetlands, and for campaign finance reform, and she opposed anti-environmental amendments and riders. She has an excellent voting record once again.



in detail
**The
candidates**

Rep. John Conyers, Jr. (D)
Detroit, Fourteenth District
Incumbent



One of the longest serving members of the Michigan congressional delegation, Congressman John Conyers has one of the finest vote records in Congress on protecting the environment. He supports legislation to clean-up pollution, to set and to keep high standards for air and water. He works for right-to-know legislation to provide information to citizens on products that are sources of toxic pollution. With his seniority on important committees he is a strong voice of leadership on our issues, and leads in efforts to block anti-environmental riders and amendments.

Michigan House of Representatives

Rep. Hansen Clarke (D)
Detroit, Seventh District
Incumbent

Rep. Clarke is seeking his 3rd term in the House. He has been endorsed the basis of his 100% voting record in the House for 1999-2000. Rep. Clarke has met with Group leaders to discuss our issues locally. Mr. Clarke is expected to win reelection in this near-westside Detroit district.

Rep. Belda Garza (D)
Detroit, Eighth District
Incumbent



Rep. Garza is completing her first term representing this southwest Detroit district. During her first term she compiled an 87% voting record on Sierra Club issues. After surviving a tough primary challenge, Rep. Garza should win handily in November.

Rep. Samuel Thomas III (D)
Detroit, Tenth District
Incumbent

Rep. Thomas has the Sierra Club endorsement for the first time as he seeks his third term in the House. His voting record improved from 57% to 73% from his first to second term. The SEMG Political Committee interviewed Rep. Thomas and found him receptive on many issues. SEMG feels confident that the record can improve even more this term with regular communications regarding our positions.

Rep. Derrick Hale (D)
Detroit, Fourteenth District
Incumbent

Rep. Hale has earned our endorsement this year for the third time. Rep. Hale sponsored a provision for the DEQ to convene an environmental justice task force. This amendment to the DEQ budget was voted down in the House. With the Sierra Club opening an Environmental Justice office in Detroit, Rep. Hale is an important ally on this issue. This district covers the extreme northwest corner of Detroit.

Amanda Howe (D)
Dearborn, Fifteenth District



Ms. Howe is a legal aid attorney challenging Rep. Woronchak in this Dearborn district. Ms. Howe showed broad support for Club issues in our questionnaire. "I do agree that the state

should take a strong role in creating & enforcing standards to protect the public from toxic emissions." Her opponent compiled a 0% voting record in his first term. This is going to be one of the most closely watched contests in the state this year.

John Stewart (R)
Plymouth, Twentieth District

The surprise winner in a 4-way Republican primary to replace term-limited Rep. Law. Mr. Stewart's questionnaire reflected a good working knowledge of, and support for, a range of issues facing Michigan. Mr. Stewart is a former member of the Plymouth Board of Trustees and the President-elect of the Kiwanis Club. He actively sought our support and has made environmental stewardship a part of his campaign. Mr. Stewart should win comfortably in this Plymouth/Northville district.

Rep. Ray Basham (D)
Taylor, Twenty Second District
Incumbent



A first-time endorsement for this Romulus/Taylor representative. In his second full term in the House, Rep. Basham compiled a 100% voting record as well as leading the charge to stop a toxic waste injection well in Romulus.

Rep. Gloria Schermesser (D)
Lincoln Park, Twenty Fifth District
For the third time we are endorsing Rep. Schermesser. She has voted with our positions over 80% of the time while representing this downriver district.

in detail The candidates

Rep. William Callahan (D)
 St. Clair Shores, Twenty Sixth
 District
 Incumbent

Another 3-time endorsee, as well as a Sierra Club member, Rep. Callahan spent the last legislative session working to get the funds to address Lake St. Clair's problems. He has served a key role as a member of the Conservation and Outdoor Recreation Committee as a voice for environmental protection. Rep. Callahan is expected to have a strong challenge in this St. Clair Shores district.

Rep. Michael Switalski (D)
 Roseville, Twenty Seventh District
 Incumbent



A first-time endorsement for Rep. Switalski in this Roseville/Eastpointe district. In his first term in the House Rep. Switalski voted our positions 93% of the time and sought our endorsement for his second term.

Steve Bieda (D)
 Warren, Sterling Heights, Twenty
 Ninth District

The challenger in this district, Mr. Bieda seeks to demand accountability from state agencies concerned with the environment and to "vote with a strong environmental stance". He has been a volunteer for the last 6 years on the Clinton River Clean-up and points to clean water and farmland loss as issues of importance to him. He is challenging Rep. Faunce in this north Warren/south Sterling Heights district. Rep. Faunce has a 20% voting record, and this is expected to be an extremely tight contest.

Irvin Droste (D)
 Sterling Heights, Thirtieth District



Mr. Droste is seeking election to this open seat in Sterling Heights. His number one issue is the clean up of Lake St. Clair. He would like to enact stricter guidelines that have more punitive consequences for the dumping of raw sewage into the watershed. He is also concerned with the proliferation of urban sprawl in Macomb Co. and would like more local control of development.

Rep. Paul Gielegem (D)
 Clinton Township, Thirty First
 District
 Incumbent

The Club endorsed Rep. Gielegem in his first bid for public office 2 years ago and he proceeded to achieve a 93% voting record with us. We are pleased to be able to recommend him again. This Fraser/Roseville/Clinton Twp. district is very balanced and Rep. Gielegem is expected to have a close race.

Rep. Dave Woodward (D)
 Royal Oak, Thirty Fourth District
 Incumbent

This is the second endorsement for Rep. Woodward in this Madison Heights/Royal Oak/Hazel Park district. He voted in support of the environment 93% of the time as a freshman legislator to earn the repeat honor. Rep. Woodward is a good voice on the environment as a member of both the Energy and Technology Committee as well as the Great Lakes and Tourism Committee.

Rep. Gilda Jacobs (D)
 Whitelake, Thirty Fifth District
 Incumbent

This Sierra Club member with a 100% voting record last term has easily earned her 3rd consecutive endorsement. Rep. Jacobs has publicly announced her interest in becoming the Democratic Floor leader, an influential post in setting the legislative agenda.

Rep. Nancy Quarles (D)
 Southfield, Thirty Sixth District
 Incumbent



A first endorsement for this 2 term Southfield representative. Rep. Quarles has voted our issues 90% of time in her tenure. She is seeking her final term before she is term limited.

Aldo Vagnozzi (D)
 Farmington Hills,
 Thirty Seventh District



Mr. Vagnozzi has been a member of the city council and school board as well as mayor in Farmington Hills. He considers himself an environmentalist and has a record of supporting mass transportation, fighting development and supporting public participation in decisions. His legislative priority is to protect small wetlands that currently escape the regulations. He is challenging one of the environmentally worst legislators in Rep. Raczkowski.

in detail
The candidates

Matt Hogan (D)

Whitelake, Forty Fourth District



We endorsed Mr. Hogan 2 years ago and he lost a fairly close race to Mike Kowall. Rep Kowall has gone on to an unimpressive 20% environmental voting record. Mr. Hogan is a retired state trooper who is concerned with the rapid development overtaking this central Oakland Co. (Waterford/White Lake) district. "We have little else to give our descendents – protect the environment vigorously." We couldn't agree more.

Rep. Rose Bogardus (D)

Davison, Forty Seventh District
Incumbent



Rep. Bogardus, in her second term, has been an important player on the Forestry and Minerals and the Agriculture committees. She led a successful move in the House to block mandates for timber harvest quotas on state forests. She has advocated for use of the Clean Michigan bond for important environmental clean-up purposes and for additional funds for the environment.

Rep. Vera Rison (D)

Flint, Forty Eighth District
Incumbent

Rep. Rison brought her experience as a Genesee County Commissioner to the House. She is very knowledgeable about environmental cleanup and the

issues raised by the private use of public lands. She is strong supporter of the public's right-to-know legislation and works to assure effective implementation of environmental and health laws.

Rep. Jack Minore (D)
Flint, Forty Ninth District
Incumbent



Rep. Jack Minore has a 100% vote record in this 2-year term. He is accessible to his constituents and has worked with Nepeessing Group leaders on local issues. Minore has voted for a task force on environmental justice, toxic waste cleanup funding, and right-to-know legislation. He has been a consistent voice in support of environmental protection in the State House.

Rep. Patricia Lockwood (D)
Fenton, Fifty First District
Incumbent

Rep. Lockwood has an excellent record of voting in support of environmental legislation in this past session. She supports funding for cleaning of toxic sites, control of hazardous waste, and the public's right-to-know legislation. She has been active in committees on Great Lakes and urban policy issues.

Rep. John Hansen (D)
Dexter, Ann Arbor,
Fifty Second District
Incumbent



John Hansen, a former superintendent

of schools in Dexter, is completing his first term in the House with a fine record of supporting all of the pro-environment legislation in the House. Although a first term representative, he is already a key leader on environmental issues. He has worked on problems of urban sprawl, the Drain Code and watershed protection, medical waste incineration, factory farm pollution, and utility deregulation. Rep. Hansen meets frequently with his constituents and local groups, and is an articulate advocate. He is particularly concerned with the problems of rapid growth and sprawling development, and with a healthy environment for children.

Chris Kolb (D)

Ann Arbor, Fifty Third District



Chris Kolb is currently a fourth term Councilman and Mayor pro-tem of the city of Ann Arbor. He consistently supports initiatives for parks and natural areas, for improved public recycling, energy conservation, transportation infrastructure, stormwater management, and environmental planning to control sprawl. He has opposed permit modifications weakening Pall-Gelman Sciences discharge of 1,4 dioxane as part off cleanup of one of the state's major pollution sites. Until filing to run for the House he was most recently employed as a legislative aide to Rep. John Hansen, a position providing invaluable knowledge about current statewide environmental issues.



in detail
The candidates

Rep. Ruth Ann Jamnick (D)
 Ypsilanti, Fifty Fourth District
 Incumbent



Rep Jamnick has a 100% record of supporting good environmental legislation and opposing amendments to weaken our standards. She strongly supports efforts to protect wetlands and reduce pollution of streams and rivers. She had voted to fully fund enforcement of environmental laws. Jamnick also supports stronger control over the disposal of hazardous waste and right-to-know legislation.

Rep. Mark Schauer (D)
 Battle Creek, Sixty Second District
 Incumbent

Completing his second term, Rep. Schauer has worked from his position as Vice Chair of the Health Policy Committee and the Urban Policy and Economic Development Committee to further legislation to protect the public and children from toxins in the environment. He is a pro-environment legislator with an excellent record, and has become one of the leaders in the House.

Gretchen Whitmer (D)
 East Lansing, Seventieth District



Ms. Whitmer is a Lansing area attorney running for the seat being

vacated by Rep. Laura Baird. She currently chairs the East Lansing Transportation Commission and is involved with Project Pride Recycling. Whitmer is an advocate for green space protection, supports strong health standards for air quality, pollution reduction from coal-fired power plants, and strong clean-up standards for brownfields.

Dave Oppliger (D)
 Fort Gratiot, Port Huron,
 Eighty First District



One of the strongest questionnaire responses we saw this year was from Mr. Oppliger. He is a member of Clean Water Action and showed an impressive knowledge and support for environmental issues. "We all share the environment and we all share an obligation to protect the environment". Two years ago the Sierra endorsed candidate in this Port Huron/Marysville district lost to now Rep. Hager by less than 200 votes. In his first term Rep. Hager has turned out to be a 0% disaster. Mr. Oppliger promises to be a strong candidate with a good shot to knock off the incumbent.

Mike Delling (D)
 Lapeer, Marine City, Algonac,
 Eighty Second District



Mr. Delling has a long public service resume. Currently a member of the Lapeer Co. Planning Commission, and its Vice Chair, Mr. Delling has volunteered for everything from 4H to

Lapeer Area Hospice to Lapeer Area Citizens Against Domestic Assault. As legislator he would advocate for polluter pay laws as well as the restoration of citizen oversight boards for the DNR/DEQ. He would like to move to alternatives to the coal power plants with cleaner alternatives. He is challenging Rep. Gilbert in this St. Clair and Lapeer Co.'s district. Mr. Gilbert has a 13% environmental voting record.

Rep. Julie Dennis (D)
 Muskegon, Ninety Second District
 Incumbent

Julie Dennis has been a consistent supporter of environmental protection since she came to the state legislature. Her voting record reflects her commitment to protection of air and water quality, clean up of toxic contamination and sensible land use. She has supported examination of environmental justice concerns in Michigan, the addition of environmental considerations to the state Drain Code, and local authority to control factory farm pollution. Dennis can be counted on to support the environment.

Cheryl Hadsall (D)
 Birch Run, St. Charles,
 Ninety Fourth District

She has served on the Burch Run Township Board, the Planning Commission and the Parks and Recreation Board. She has the support of local environmental activists. Hadsall supports reversing the 1999 law barring communities from regulating factory farms. She also support finding alternatives to medical waste incineration and strengthening pollution controls on coal-fired power plants. She is an advocate for open space planning and supports better planning for protection of habitat, diversity and recreational uses on our public lands.

Susan Smith (D)
 Mt. Pleasant, Ninety Ninth District
 Susan Smith, is a former mayor of Mt.

in detail
**The
candidates**

Pleasant, and former president of the Mt. Pleasant Board of Education. She worked in 1990-91 to obtain a grant for a MRF (material recovery facility) for the city. She is a strong advocate for environmental protection to improve the quality of water by protecting watersheds and controlling pollution. She supports efforts to control sprawl. "Today's land use decisions will determine the quality of life for future generations."

Steve Dart (D)

Harbor Springs, Sault Ste. Marie,
District One Hundred Seven

Steve Dart is challenging an incumbent with a poor record on the environment in this northern lower peninsula - eastern upper peninsula district. Dart has served as the chair of the Emmet County zoning board and on the Harbor Springs City Council. He has been a frequent activist on the environment and is particularly interested in Great Lakes protection. He supports cleaning up power plants, reversing last year's law prohibiting local control over factory farm pollution, and restoring citizen involvement in environmental decisions.

Local Offices

Ingham County Commissioner

John Veenstra (D)

Meridian Township,
Eleventh District

Veenstra has worked to develop the County Park system. He is a strong advocate for protection of wetlands and watersheds to improve water quality and prevent flooding and pollution. He is supporting efforts to control urban sprawl with effective zoning and regional planning.

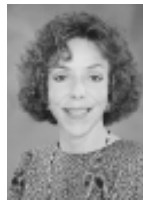
Ingham County Drain
Commissioner

Patrick Lindemann (D)

In the last decade it has become clear

that measures to control water under the charge of each county drain commissioner are an essential part of protecting watersheds and preventing pollution of our streams and lakes. Lindemann is one of the very few drain commissioners to devote effort to improving water quality. He has used innovative wetland construction methods to detain and clean waters and improve watersheds.

Washtenaw County Drain
Commissioner
Janis Bobrin (D)



Janis Bobrin is recognized statewide for her work in restoring creeksheds and working to control both point-source and non-point source pollution of streams and rivers. She is also responsible for developing a quick response effort to clean-up spills of toxic wastes. She has received a major grant for Mallet Creek restoration and the work is in progress.

Ann Arbor City Mayor
John Hieftje (D)



John Hieftje is a Councilman for the 1st Ward of the City of Ann Arbor. He has a long record of working in support of the recycling program which is now recognized nationally. He worked for the passage of a millage which will provide additional parkland for natural areas and connecting greenways. He strongly supports environmental education and the Natural Areas Preservation Program of the

city parks. He will work to restore the creeksheds and reduce the flooding within the city and coordinate with the Drain Commissioner and Huron River Watershed Council to improve the water quality and function of the Huron River.

Meridian Township Board
Susan McGillicuddy(R),
Supervisor
Pat Hagen(D), Clerk
Bruce Hunting(D), Treasurer
Steve Stier(R), Trustee
Anne Woiwode(D), Trustee
Julie Brixie(D), Trustee



The Meridian BiPartisan Leadership is a coalition of Republicans and Democrats running together for Meridian Township Board on a platform of smartgrowth and open and accountable local government. The Sierra Club's Central Michigan Group is particularly impressed with the coalition's willingness to set aside partisan differences in order to break the grip of developers on the township board and restore the voice of residents and local businesses who have demanded smarter planning practices. This unique group offers Meridian Township the opportunity to be at the forefront of communities working to preserve their quality of life by stopping the destructive impacts of sprawl.

"With the Presidency, Congress, and Supreme Court at stake, environmentalists could win this one."

Sierra Club, September/October

ON
The Record

Key environmental votes in the Michigan House of Representatives, 1999-2000 Session

The Environmental Vote Chart is a record of selected key votes by the Michigan House on environmental legislation in 1999 through June 2000. Votes are not weighted for importance, and it is the overall pattern rather than a single vote that is informative. Many of the important votes are made in committees and do not show up in the Journal of the House record. Frequently the final bill passes nearly unanimously. For this reason amendments which strengthen or weaken a bill are better indicators of either support for, or opposition, to environmental legislation. The votes chosen are for those issues of greatest concern to the Sierra Club, and those which are discriminating rather than near unanimous or party-line votes. A vote record is one indicator of a legislator's work, but does not reflect his or her committee work, leadership, or development of legislation and responsiveness to constituents on environmental issues.

ENVIRONMENTAL JUSTICE (EJ)

Assuring that pollution is not permitted to disproportionately affect low income or minority communities is the fundamental goal of environmental justice. Rep. Hale's amendment to S.B. 364, the DEQ budget, would have established a task force to review state policies and permit activity and to develop recommendations on how to further environmental fairness for all communities.

Yes is Pro-environment vote – Defeated, 43-62 – 5/27/99

FISH ADVISORIES (FISH)

Contamination of Michigan's lakes with toxics such as mercury has made it necessary for the state to issue health advisories regarding consumption of fish – and important way to educate the public regarding the hazards of fish contamination. Rep. Baird's amendment to S.B. 370, the DNR budget, would have required the agency to work to assure that fishing license vendors provide the advisories to all purchasers of licenses and to post advisories at some public access sites on lakes.

Yes is Pro-environment vote – Defeated, 52-55 – 5/27/99

LAND USE (SPRL)

One step was taken by the legislature to address the impacts of sprawl on communities when the House Budget Committee added a requirement to S.B. 364, the DEQ budget, that the agency assure that state grants and assistance programs promote redevelopment in cities instead of sprawl. Rep. Stamas' amendment would have eliminated that requirement.

No is Pro-environment vote – Defeated, 46-59 – 5/27/99

WETLANDS (WETL)

Wetlands continue to disappear in Michigan at an alarming rate while the state's permit program is under constant criticism for its failures to live up to our wetland protection law or its ability to evaluate wetlands loss. Rep. Cherry's amendment to S.B. 364, the DNR budget, would have required a report on DEQ permit activity and on the acreage of wetlands developed, destroyed and created.

Yes is Pro-environment vote – Defeated, 50-56 – 5/27/99

BEACH POLLUTION (BEACH)

When the Clean Michigan Initiative was authorized by the legislature (H.B. 4065), there were a number of efforts to assure commitment of the bond funding to improving the quality of Michigan's environment. An amendment, by Rep. Callahan, would have earmarked \$250,000 for prevention of water pollution and monitoring of water quality and would have set up a public database on beach closings caused by contamination.

Yes is Pro-environment vote – Defeated, 46-59 – 6/17/99

TOXIC CLEAN-UP (TOX)

In another move to put the Clean Michigan Initiative (H.B. 4065) to work on critical environmental concerns, an amendment by Rep. Brater would have set aside earmarked funds for the clean up of Michigan's most acutely contaminated sites of toxic pollution.

Yes is Pro-environment vote – Defeated, 46-60 – 6/17/99

GLOBAL WARMING (AIR)

The 1997 Kyoto agreement among nations to take steps to reduce the emissions of global warming pollutants has yet to be ratified by the U.S. Congress. H.B. 4651, authored by Rep. Kukuk, prohibits the Michigan DEQ from taking steps to enforce any emission limits set in the Kyoto Protocol until Congress has enacted legislation to implement the agreement.

No is Pro-environment vote – Passed, 66-42 – 12/1/99

DRAIN CODE REFORM (DRAIN)

Efforts to reform Michigan's antiquated drain code which has resulted in extensive damage to wetlands, rivers and streams in this state over the course of decades have fallen far short of changes needed to protect the environment and provide for public involvement in decisions. An amendment by Rep. Bogardus to H.B. 4803, the bill to revise the drain code, would have allowed, for the first time, the review of drain decisions on the basis of environmental factors.

Yes is Pro-environment vote – Defeated, 39-64 – 12/7/99

ON The Record

Key environmental votes in the Michigan House of Representatives, 1999-2000 Session.

LIVESTOCK FACTORIES (FARM)

The proliferation of massive livestock operations, known as factory farms, has increasingly been a cause of water pollution, odor and pest problems for neighboring residents, small farmers and communities. S.B. 205, sponsored by Sen. Gougeon, bars local governments from acting to regulate factory farm operations to control these harmful impacts.

No is Pro-environment vote – Passed, 61-48 – 12/9/99

POWER PLANTS (MERC)

Rep. Callahan's amendment to S.B. 937 would have required regulation of mercury emissions from power plants and a reduction of emissions to protect public health. Coal-fired power plants are the largest source of mercury pollution in the air, resulting in deposition in lakes and fish contamination and harm to wildlife.

Yes is Pro-environment vote – Passed, 56-53, then defeated by voice vote on reconsideration – 5/31/00

FARMLAND (TAX)

In a move to address farmland loss and urban sprawl, legislators took on reduction of farmland property taxes. However, in adopting S.B. 1246 sponsored by Sen. McManus, accompanying conversion fees were put in place which burden farmers rather than developers and may actually spur the loss of farmland and open space.

No is Pro-environment vote – Passed, 66-39 – 6/7/00

ROAD DEVELOPMENT (ROAD)

Use of the state's Rainy Day Fund for building and expanding new major highways will exacerbate urban sprawl problems. Rather than use road building money to maintain existing roads, S.B. 1275, authored by Sen. Young, authorizes a raid of up to \$660 million of the fund for new road projects.

No is Pro-environment vote – Passed, 79-26 – 6/8/00

SPOTLIGHT ON SOUTHEASTERN MICHIGAN

TIM KILLEEN, SOUTHEAST MICHIGAN GROUP POLITICAL COMMITTEE CHAIR

Since last spring, the fifteen members of the Southeast Michigan Group's Political Committee have been sifting through the candidates in order to bring you the candidate endorsements for Southeast Michigan which are made in these pages. The Southeast Michigan Group serves a region responsible for electing 46 of the 110 Michigan House members and five (partial responsibility for three others) of the 16 Michigan Congressional representatives. This is always an exciting process as we reaffirm our support for incumbents who have been fighting our fight and discover the new candidates who want to make the environment an issue in their campaign.

This process has already paid dividends with the win of John Stewart in the Republican primary in the 20th State House district. A surprise winner in a 4-way primary to replace Rep. Gerald Law, Mr. Stewart is the favorite in November in this mostly Republican district in the Plymouth/Northville area. His election will give the Sierra Club and the environment an unfortunately all too rare ally on the Republican side of the aisle.

We are also excited about two candidates in Oakland County. Both Aldo Vagnozzi (MI House 37th) and Matt Frumin (U.S. House 11th) are challenging two of Michigan's worst envi-

ronmental legislators — State Rep. Andrew Raczkowski and U.S. Rep. Joe Knollenberg. Both of these incumbents actively work and vote against environmental protection bills. Please take the time to review the candidate endorsement and find pro-environment candidates in your area.

How Can You Help?

Every environmental issue is also a political issue. The Sierra Club has chosen as part of its mission to encourage the participation of its membership in the political process. The most direct way to have a positive impact on the environment is to elect a majority of legislators who put a priority on our issues. In every election there are many opportunities for the Club to have an impact on various races, this year is no different. The Political Committee in Southeast Michigan is identifying the most crucial races where we can make a difference and is organizing activities for Club members to plug into. I would encourage every member to consider giving a few hours of volunteer time and/or a check in support of these events. We will be doing some mailings to the membership in selected districts, please respond positively to these requests when you receive them. Here are a few activities we have planned:

Continued Page 23

Uppercase denotes pro-environment • Lowercase denotes anti-environment • NV denotes "not voting" • Tallies indicate times voted pro-environment out of 12 votes

MICHIGAN HOUSE VOTES, 1999-2000

	EJ	FISH	SPRL	WETL	BEAC	TOX	AIR	DRAIN	FARM	MERC	TAX	ROAD	
Allen, Jason (104)	n	n	N	n	n	n	y	n	y	n	y	y	1
Baird, Laura (70)	Y	Y	N	Y	Y	Y	N	nv	N	Y	N	N	11
Basham, Raymond (22)	Y	Y	N	Y	Y	Y	N	n	N	Y	N	y	10
Birkholz, Patricia (88)	n	n	nv	n	n	n	y	n	y	n	y	y	0
Bisbee, Clark (64)	n	n	y	n	n	n	y	n	y	n	y	y	0
Bishop, Michael (45)	n	n	y	n	n	n	y	n	y	n	y	y	0
Bogardus, Rose (47)	Y	Y	N	Y	Y	Y	N	Y	N	Y	y	y	10
Bovin, Douglas (108)	n	Y	y	Y	n	n	y	Y	y	Y	y	y	4
Bradstreet, Ken (105)	n	n	y	n	n	n	y	n	y	n	y	y	0
Brater, Liz (53)	Y	Y	N	Y	Y	Y	N	Y	N	Y	N	N	12
Brewer, Lingg (68)	Y	Y	nv	Y	Y	nv	N	n	N	Y	nv	N	8
Brown, Bob (16)	n	Y	N	Y	nv	Y	N	Y	N	Y	y	y	8
Brown, Cameron (59)	n	n	y	n	n	n	y	n	y	n	y	y	0
Byl, William (75)	n	n	N	n	n	n	y	Y	N	n	N	y	4
Callahan, William (26)	Y	Y	N	Y	Y	Y	N	Y	N	Y	N	N	12
Cassis, Nancy (38)	n	n	y	n	nv	nv	y	n	y	n	y	y	0
Caul, Sandra (99)	n	n	y	n	n	Y	y	n	y	n	y	y	1
Cherry, Deborah (50)	n	Y	N	Y	Y	Y	N	Y	N	Y	y	y	9
Clark, Irma (11)	Y	Y	N	Y	Y	nv	N	Y	N	Y	N	N	11
Clarke, Hansen (7)	Y	Y	N	Y	Y	Y	N	n	N	Y	N	y	10
Daniels, Ken (5)	Y	Y	N	Y	Y	Y	N	Y	N	Y	N	N	12
DeHart, Eileen (18)	Y	Y	N	Y	Y	Y	N	nv	N	Y	N	N	11
Dennis, Julie (92)	Y	Y	N	nv	Y	Y	N	Y	N	Y	N	N	11
DeRossett, Gene (55)	n	n	y	n	n	n	y	n	y	n	nv	y	0
DeVuyst, Larry (93)	n	n	y	n	n	n	y	n	y	n	y	y	0
DeWeese, Paul (67)	n	n	N	n	n	n	y	n	y	n	y	y	1
Ehardt, Stephen (83)	n	n	N	n	n	n	y	n	y	n	y	nv	1
Faunce, Jennifer (29)	n	Y	y	n	Y	n	y	n	y	Y	y	y	3
Frank, A.T. (96)	nv	Y	y	Y	Y	Y	N	Y	N	Y	y	y	8
Garcia, Valde (86)	n	n	y	n	n	n	y	n	y	n	y	y	0
Garza, Belda (8)	Y	Y	N	Y	Y	Y	N	Y	N	Y	nv	N	11
Geiger, Terry (87)	n	nv	y	n	nv	n	y	nv	y	nv	y	y	0
Gielegem, Paul (31)	Y	Y	N	Y	Y	Y	N	Y	N	Y	N	N	12
Gilbert, Jud (82)	n	n	y	n	Y	n	y	n	y	n	y	y	1
Godchaux, Pan (40)	n	n	N	nv	n	n	y	n	y	n	N	y	2
Gosselin, Robert (42)	n	n	y	n	n	n	y	n	y	n	nv	y	0
Green, Michael (84)	n	nv	nv	nv	n	n	y	n	y	n	y	y	0
Hager, Lauren (81)	n	n	y	n	n	n	y	n	y	Y	y	y	1
Hale, Derrick (14)	Y	Y	N	Y	Y	Y	N	Y	N	Y	N	N	12
Hanley, Michael (95)	Y	Y	N	Y	n	n	N	Y	N	Y	N	N	10
Hansen, John (52)	Y	Y	N	Y	Y	Y	N	Y	N	Y	N	y	11
Hardman, Artina Tinsley (3)	Y	Y	N	Y	Y	Y	N	Y	N	Y	N	N	12
Hart, Doug (73)	n	n	N	n	n	n	y	n	y	n	y	y	1
Howell, Jim (94)	n	n	N	n	n	n	y	n	y	n	y	y	1
Jacobs, Gilda (35)	Y	Y	N	Y	Y	Y	N	Y	N	Y	N	N	12
Jamnick, Ruth Ann (54)	Y	Y	N	Y	Y	Y	N	Y	N	Y	N	N	12
Jansen, Mark (72)	n	n	N	n	n	n	y	n	y	n	y	y	1
Jelinek, Ron (78)	n	n	y	n	n	n	y	n	y	n	y	y	0
Jellema, Jon (89)	n	n	N	n	n	n	y	Y	y	n	y	y	2
Johnson, Rick (102)	n	n	N	n	n	n	y	n	y	n	y	y	1
Johnson, Ruth (46)	n	Y	y	n	nv	nv	y	n	N	n	nv	nv	2
Julian, Larry (85)	n	n	N	n	n	n	y	n	y	n	y	y	1
Kelly, Thomas (17)	Y	Y	N	Y	Y	Y	N	Y	N	Y	N	y	11
Kilpatrick, Kwame (9)	Y	Y	nv	Y	n	n	y	nv	y	Y	N	y	5
Koetje, James (74)	n	n	y	n	n	n	y	n	y	n	y	y	0

Uppercase denotes pro-environment • Lowercase denotes anti-environment • NV denotes "not voting" • Tallies indicate times voted pro-environment out of 12 votes

MICHIGAN HOUSE VOTES, 1999-2000

	EJ	FISH	SPRL	WETL	BEAC	TOX	AIR	DRAIN	FARM	MERC	TAX	ROAD	
Kowall, Michael (44)	n	n	y	Y	n	n	y	n	N	n	y	y	2
Kuipers, Wayne (90)	n	n	y	n	n	n	y	n	y	n	nv	y	0
Kukuk, Janet (33)	n	n	y	n	n	n	y	n	y	n	y	y	0
LaForge, Edward (60)	Y	Y	N	nv	Y	Y	N	Y	N	Y	N	N	11
LaSata, Charles (79)	n	n	N	n	n	n	y	n	y	n	y	y	1
Law, Gerald (20)	n	n	y	n	n	n	y	n	y	n	y	nv	0
Lemmons, LaMar (2)	Y	Y	N	Y	Y	Y	N	Y	y	Y	nv	y	9
Lockwood, Patricia (51)	Y	Y	N	Y	Y	Y	N	n	N	Y	N	y	10
Mans, George (23)	nv	Y	N	Y	n	n	y	n	nv	Y	N	y	5
Martinez, Lynne (69)	Y	Y	N	Y	Y	Y	N	n	N	Y	N	y	10
Mead, David (101)	n	n	y	n	n	n	y	n	y	n	y	y	0
Middaugh, Mary Ann (80)	n	n	y	n	n	n	y	n	y	n	y	y	0
Minore, Jack (49)	Y	Y	N	Y	Y	Y	N	Y	N	Y	N	N	12
Mortimer, Mickey (65)	n	n	N	n	n	n	y	n	y	n	y	y	1
Neumann, Andy (106)	Y	Y	y	Y	Y	Y	N	Y	N	Y	y	y	9
O'Neil, William (24)	Y	Y	Y	Y	Y	n	y	n	y	Y	N	y	6
Pappageorge, John (41)	n	n	y	n	n	n	y	n	y	n	y	y	0
Patterson, Bruce (21)	n	n	y	n	n	n	y	n	y	n	y	y	0
Perricone, Charles (61)	n	nv	y	n	n	n	y	nv	y	n	nv	y	0
Pestka, Steven (76)	n	Y	y	Y	Y	Y	N	Y	N	Y	y	y	8
Price, Jr., Hubert (43)	Y	Y	N	Y	n	n	N	Y	N	Y	N	y	9
Prusi, Michael (109)	Y	Y	N	Y	Y	Y	N	Y	N	Y	N	y	11
Pumford, Mike (100)	n	n	N	n	n	n	y	n	N	n	y	y	2
Quarles, Nancy (36)	Y	Y	N	Y	Y	Y	N	Y	N	Y	N	nv	11
Rackowski, Andrew (37)	n	n	y	n	n	n	y	n	y	n	y	y	0
Reeves, Triette (13)	Y	Y	N	Y	Y	Y	y	nv	N	Y	N	N	10
Richardville, Randy (56)	n	n	y	n	n	n	y	n	y	n	y	y	0
Richner, Andrew (1)	n	n	y	n	n	n	y	n	y	n	y	y	0
Rison, Vera (48)	nv	Y	nv	Y	Y	Y	N	Y	N	Y	N	N	10
Rivet, Joseph (97)	Y	Y	N	Y	nv	Y	y	n	y	Y	y	N	7
Rocca, Sue (30)	n	Y	y	n	Y	Y	y	n	y	n	y	y	3
Sanborn, Alan (32)	n	n	y	n	Y	n	y	n	y	n	y	y	1
Schauer, Mark (62)	Y	Y	N	Y	Y	Y	N	Y	N	Y	N	y	11
Schermesser, Gloria (25)	Y	Y	N	Y	Y	Y	N	nv	N	Y	N	N	11
Scott, Martha (6)	Y	Y	N	Y	Y	Y	N	Y	N	Y	nv	nv	10
Scranton, Judith (66)	nv	n	N	n	n	n	y	n	y	n	y	y	1
Shackleton, Scott (107)	n	n	y	n	Y	Y	y	n	y	Y	y	y	3
Sheltrown, Dale (103)	n	Y	y	n	Y	n	y	n	y	Y	y	y	3
Shulman, Marc (39)	n	n	y	n	n	n	y	n	y	n	y	y	0
Spade, Doug (57)	Y	Y	N	Y	n	n	y	n	y	Y	y	y	5
Stallworth, Keith (12)	Y	Y	N	Y	n	Y	nv	Y	N	Y	N	N	10
Stamas, Tony (98)	n	n	y	n	n	n	y	n	y	n	y	y	0
Switalski, Michael (27)	Y	Y	N	Y	Y	Y	N	Y	N	Y	N	N	12
Tabor, Susan (71)	n	n	y	n	n	n	y	n	y	n	nv	y	0
Tesanovich, Paul (110)	Y	Y	N	Y	n	Y	N	Y	y	Y	y	N	9
Thomas III, Samuel (10)	nv	Y	N	Y	n	Y	nv	Y	N	Y	N	N	9
Toy, Laura (19)	n	n	y	n	n	n	y	n	y	n	y	y	0
Van Woerkom, Gerald (91)	n	n	N	n	n	Y	y	n	y	Y	y	y	3
Vander Roest, Jerry (63)	n	n	y	n	n	n	y	n	N	n	y	y	1
Vaughn, Ed (4)	Y	Y	N	Y	Y	Y	N	Y	N	Y	N	N	12
Vear, Steven (58)	n	n	y	n	n	n	y	n	y	n	y	y	0
Voorhees, Joanne (77)	n	n	y	n	n	n	y	n	y	n	y	y	0
Wojno, Paul (28)	Y	Y	N	Y	Y	Y	N	Y	N	Y	N	y	11
Woodward, David (34)	Y	Y	N	Y	Y	Y	N	Y	N	Y	N	y	11
Woronchak, Gary (15)	n	n	y	n	n	n	y	n	y	n	y	y	0

Sierra Club Mackinac Chapter Directory

Mackinac Chapter Office

109 East Grand River Avenue
 Lansing, MI 48906
 517-484-2372 • 517-484-3108(f)
 www.sierraclub.org/chapters/mi
 mackinac.chapters@sierraclub.org
 Alison Horton, Director
 Anne M. Woiwode, Project Director
 Dan Farough, Member Involvement
 Joyce McIntosh, Office Manager

Sierra Club Midwest Office

214 North Henry Street, Suite 203
 Madison, WI 53703
 608-257-4994
 Carl Zichella, Midwest Regional Staff Director
 Emily Green, Great Lakes Program Director

Sierra Club National Headquarters

85 Second Street
 San Francisco, CA 94105
 415-977-5500

Address Changes

Please include old mailing label
 Sierra Club - Membership
 P.O. Box 52968
 Boulder, CO 80321-2968

Chapter Executive Committee Officers

Lydia Fischer Chair	313-863-8392
Sue Kelly Vice Chair	810-227-9563
Helen LeBlanc Treasurer	517-655-6454
Mike Johnson, 4th Officer	616-948-8840
Fred Townsend, 5th Officer	248-627-3587

At Large Representatives

Term Expires January 2001

Lydia Fischer	313-863-8392
Mike Keeler	810-767-9904
Helen LeBlanc	517-655-6454
Gary Semer	734-453-4443
Mike Johnson	616-948-8840

Terms Expire January 2002

Sue Kelly	810-227-9563
Judy Thompson	734-487-5548
Fred Townsend	248-627-3587
Barbara Yarrow	248-932-9164

Group Representatives

Central Michigan

Tom Nelson	517-336-9707
------------	--------------

Central Upper Michigan

John Reebbers	906-228-3617
---------------	--------------

Crossroads

David Wright	810-229-1685
--------------	--------------

Huron Valley

Nancy Schiffler	734-971-1157
-----------------	--------------

Kalamazoo Valley

Paul Haas	616-664-5417
-----------	--------------

Nepessing

Holly Lubowicki	810-750-6838
-----------------	--------------

Southeast Michigan

Anna Holden	313-331-0932
-------------	--------------

Three Lakes

Floyd Byerly	906-632-0218
--------------	--------------

Thumb Valley

Craig Kendziorski	517-631-5170
-------------------	--------------

West Michigan

Martha Lore	616-682-1316
-------------	--------------

Regional Group Chairs

Central Michigan

Pete Pasterz	517-676-3339
--------------	--------------

Central Upper Michigan

John Reebbers	906-228-3617
---------------	--------------

Crossroads

Rick Pearsall	810-227-6298
---------------	--------------

Huron Valley

Doug Cowherd	734-662-5205
--------------	--------------

Kalamazoo Valley

Rus Hollister	616-685-2301
---------------	--------------

Nepessing

Linda Berker	810-653-8242
--------------	--------------

Southeast Michigan

Anna Holden	313-331-0932
-------------	--------------

Three Lakes

Floyd Byerly	906-632-0218
--------------	--------------

Thumb Valley

Janis and Craig Kendziorski	517-631-5170
-----------------------------	--------------

West Michigan

Sarah Houwerzyl	616-361-5943
-----------------	--------------

Chapter Committees

Awards

Mike Keeler	810-767-9904
-------------	--------------

Conservation

Judy Thompson	734-677-2517
---------------	--------------

Environmental Education: Open

Fall Retreat

Dave and Nancy Christiansen	616-842-6019
-----------------------------	--------------

Martie Hoadley	517-336-0335
----------------	--------------

Mark and Julie Janeczko	517-539-1676
-------------------------	--------------

Finance

Gary Semer	734-453-4443
------------	--------------

Information Systems

Alex Sagady	517-332-6971
-------------	--------------

Inner City Outings

West Michigan

John Pulver	616-453-2480
-------------	--------------

Washtenaw

Megan Beardsley	734-996-5615
-----------------	--------------

Legal: Open

The Mackinac Newsletter and Website

Davina Pallone	801-961-9939
----------------	--------------

Mackinac Chapter History

Gwen Nystuen	734-665-7632
--------------	--------------

Member Programs

Bob Duda	734-464-0076
----------	--------------

Nominations

Sue Kelly	810-227-9563
-----------	--------------

Outings

Ralph Powell	734-971-9013
--------------	--------------

Personnel

Lydia Fischer	313-863-8392
---------------	--------------

Political

Gwen Nystuen	734-665-7632
--------------	--------------

Raffle

Mike Keeler	810-767-9904
-------------	--------------

Sexual Harassment Investigation

Lydia Fischer	313-863-8392
---------------	--------------

Sierra Club Council Delegate

Mike Keeler	810-767-9904
-------------	--------------

Delegate to MRCC

Sarah Houwerzyl	616-361-5943
-----------------	--------------

Continued From Page 20

Thursday, Oct. 5th, 7:30 p.m. - Candidate Night at the SEMG Membership Meeting in Southfield. We will have three of our endorsed candidates present to discuss their candidacy. Please attend to help educate the candidates on the issues of most importance to us.

Saturday, Oct. 7th - Steve Bieda Blitz. We will be working for our candidate in this key State House race in Warren. Plan on 3-4 hours in the early afternoon. If you want to volunteer, call Patti Smith at 810.939.3720 or attorneypatti@home.com.

Saturday, Oct. 28th - Vagnozzi/Frumin Blitz. We will be working in Oakland County to support these candidates. Again it will be 3-4 hours in the early afternoon. Call Joyce Olmstead to volunteer at 248.374.6403 or joyofom@aol.com.

There is volunteer work for everyone, from stuffing envelopes to phone calling to door-to-door leafleting. All of these activities are vital to campaigns that usually struggle to get the necessary volunteers. If you would like to volunteer directly for Gore and/or Stabenow please call the following numbers.

Wayne County: 313-824-9830

Oakland County: 248-626-9461

Macomb County: 810-573-9800

These offices can also arrange volunteer opportunities for many of our Michigan House candidates. When you call, mention that you are a Sierra Club member. They have to know that we are out there supporting our candidates.

For further information, comments, interest in participating on the Political Committee please feel free to contact me. Grassroots work can pay off in a more environmentally friendly government.

Tim Killeen Chair,

Political Committee

SEMG 313.526.4052 timk@bikerider.com

Postmaster: Please send address changes to Sierra Club, 109 East Grand River • Lansing, Michigan 48906