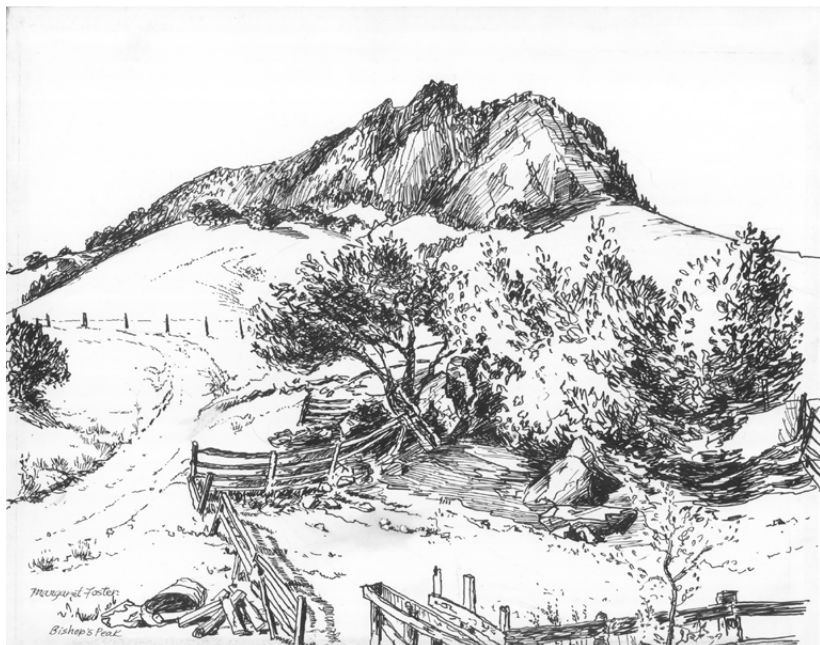
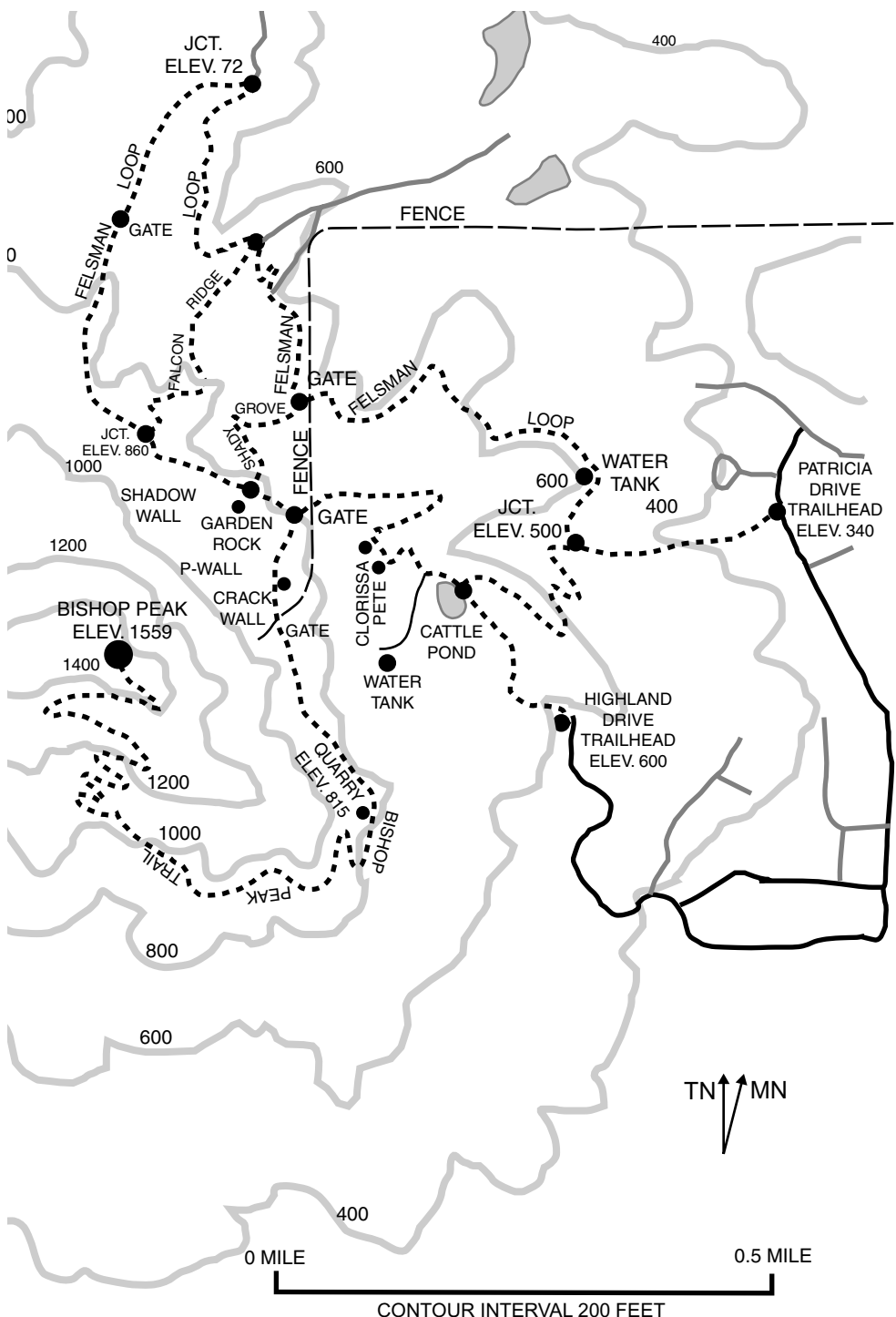


# San Luis Obispo

Bishop Peak  
Felsman Loop  
Eagle Rock  
Maino Open Space  
Poly Canyon  
Poly "P"  
Other Areas





# Map# Bishop Peak/Felsman Loop

# Bishop Peak

**Usage:** Hikers, Climbers and Dogs on Leash

**Fee:** None

**Distance:** 2.2 Miles (One Way)

**Elevation Gain/Loss:** +1200 Feet

**Approx. Hiking Time:** 3 - 4 Hours

**Hike Rating:** Moderate

**USGS Maps:** San Luis Obispo

**Best Time to Hike:** All Year, Mornings and Evenings in Summer

<u>Point On Route:</u>	<b>Distance from</b>	
	<u>Miles(Km)</u>	<u>Elevation</u>
Patricia Drive Trailhead	0.0 (0.0)	340
Bishop Peak Trail Sign	0.2 (0.3)	500
Cattle Pond	0.5 (0.8)	660
Bishop Peak/Felsman Loop Junction	0.8 (1.3)	840
Quarry	1.1 (1.7)	820
Old Foothill Trail	1.4 (2.3)	960
Saddle of Bishop Peak Summit	2.2 (3.5)	1500

**Directions to Trailhead:** From San Luis Obispo take Santa Rosa Street, Highway 1, to Foothill Blvd. Turn left on Foothill toward Los Osos Valley Road. Turn right onto Patricia Drive and follow it past the Highland Drive stop sign, to the 800 block of Patricia Drive, ¼ mile. There is a large open area on your left. Look for a “TRAIL” sign on the left, and four black posts. This is the Bishop Peak Trailhead. If you reach Twinridge Drive, you have gone too far. Park on the Bishop Peak side of Patricia Drive if possible.

**Trail Overview:** Bishop Peak, at 1559 feet, is tallest of the Nine Sisters, a volcanic range that extends from Morro Bay to San Luis Obispo. It was named by the Mission padres, who thought that the three spires on top resembled a bishop’s miter cap.

The Sierra Club and California Conservation Corps (CCC) constructed the Bishop Trail in 1998/9. The trail is a culmination of many years of effort by the Sierra Club and other organizations and agencies. The Bunnell, Gnesa,

Ferrini, and Madonna families donated or sold land to make the Bishop Peak Natural Reserve a reality. This is a wonderful trail with unparalleled views along the Morros Range, encompassing diverse habitats of grasslands, oak woodlands and dense chaparral. Its proximity to San Luis Obispo makes it one of the most popular trails in the county.

If you wish to do a longer version of this hike, you might want to take the Felsman Loop first, then climb Bishop Peak itself from where the Felsman Loop rejoins the Bishop Peak Trail.

As part of the negotiations to create the Bishop Peak Natural Reserve, and due to the high usage of the area, only hikers and climbers are allowed access to the area. Please respect this wish by not bringing your bicycle into the Bishop Peak Natural Reserve.

## **Trail Description:**

**Patricia Drive Trailhead:** The trail starts along a dirt utility access road with a pedestrian gate. Bishop Peak is already visible from here. Open hills and oaks beckon the hiker to the top. The trail then climbs 150 feet to the

**Bishop Peak Trail Sign.** The Bishop Peak Trail goes left up the hill. For a longer hike, continue up the road along the Felsman Loop to the water tank. The trail eventually rejoins the Bishop Peak Trail. Our route continues its steady climb up four switchbacks. A few large rocks make a good rest stop to enjoy the views. Along this stretch of the trail, you may see shooting stars, yellow violets and a mariposa lily or two. Passing under several oaks, the trail reaches the

**Cattle Pond.** Turn right and continue along another utility road for 100 feet. Take the trail directly ahead as we continue up the hill toward the fence line. The trail passes by the Clorissa and Pete Boulders, then takes a gentle climb to a low ridge. Here we get our first views of Chorro Valley and West Cuesta Ridge. Cerro Alto can be seen in the distance. Following the ridge, we pass through a pedestrian gate and reach the

**Bishop Peak/Felsman Loop Junction.** Rejoining the Bishop Peak Trail, take the left fork across an open field, then into an oak-covered forest. The trail is rocky from this point on. In a short distance the trail comes to a fork by Crack-Wall, heavily used by climbers. The left fork, our trail, passes through a pedestrian gate, then traverses a shady oak woodland before reaching the

**Quarry** high above Bishop Peak Elementary School and the City of San Luis Obispo. We now drop off the quarry for a quick 30-foot descent,

then start a climb up three switchbacks. With some stretch of imagination, you may see a grumpy face on “Sour Puss Rock.” Once past the switchbacks, the trail climbs a bit more before leveling out and offering views of Foothill Blvd., Cerro San Luis and Laguna Lake. Continuing, we come to the

**Old Foothill Boulevard Trail.** The Madonna family owns the lower portions of the land, and technically you are trespassing if you access Bishop Peak up this trail.

We continue around the peak. From here the trail again starts its ascent of Bishop Peak. Finally, we reach a series of eight switchbacks that complete our climb of this magnificent peak. In clear weather, our climb offers an ever-expanding view south along the coastline to Mussel Rock and Oceano Dunes. Take your time up this steep trail. We now reach the

**Saddle of the Summit of Bishop Peak,** between two of the three corners of the bishop’s miter. From here on, the trails are not maintained. The rock to the right is the easiest to climb. Please be careful! The north-facing slopes are steep, unstable and full of poison oak .



# Felsman Loop

**Usage:** Hikers, Climbers, Horses, and Dogs on Leash  
**Fee:** None  
**Distance:** 2.7 Miles (Round Trip)  
**Elevation Gain/Loss:** +700/-700 Feet  
**Approx. Hiking Time:** 1 -3 Hours  
**Hike Rating:** Easy to Moderate  
**USGS Maps:** San Luis Obispo

**Best Time to Hike: All Year**

<u>Point On Route:</u>	<b>Distance from</b>	
	<u>Miles(Km)</u>	<u>Elevation</u>
Patricia Drive Trailhead	0.0 (0.0)	340
Bishop Peak Trail Sign	0.2 (0.3)	500
Water Tank	0.3 (0.5)	600
Pedestrian Gate/Shady Grove Junction	0.7 (1.1)	680
Falcon Ridge Junction	0.9 (1.4)	680
Ranch Road Junction	1.2 (1.9)	720
Falcon Ridge Junction	1.7 (2.7)	860
Garden Rock/Shady Grove Junction	1.8 (2.9)	840
Bishop Peak/Felsman Loop Junction	1.9 (3.0)	840
Cattle Pond	2.2 (3.5)	660
Bishop/Felsman Loop Junction	2.4 (3.8)	500
Patricia Drive Trailhead	2.7 (4.3)	340

**Directions to Trailhead:** From San Luis Obispo take Santa Rosa Street north to Foothill Blvd. Turn left on Foothill toward Los Osos Valley Road. Turn right onto Patricia Drive and follow it past the Highland Drive stop sign, to the 800 block of Patricia Drive, ¼ mile. There is a large open area on your left. Look for a “TRAIL” sign and four black posts on the left. This is the Bishop Peak Trailhead. If you reach Twinridge Drive, you have gone too far. Park on the Bishop Peak side of Patricia Drive if possible.

**Trail Overview:** Bishop Peak, at 1559 feet, is the tallest of the Nine Sisters, a volcanic range that extends from Morro Bay to San Luis Obispo. Bishop

Peak was named by the padres of Mission San Luis Obispo, who felt that the three spires on top resembled a bishop's miter cap.

The Sierra Club constructed the Felsman Loop, named after Gary Felsman who made this acquisition a success and coordinated the construction of the Felsman Loop and Bishop Trail in 1998/9. The trail is a culmination of many years of effort by the Sierra Club and other organizations and agencies. A special word of thanks is due the Bunnell, Gnesa, Ferrini and Madonna families, who sold or donated land to make the Bishop Peak Natural Reserve a reality. The Felsman Loop allows us to explore grassland, oak woodlands, and chaparral ecosystems. This trail also rewards the hiker with views of Chumash Peak and Chorro Valley.

As part of the negotiations to create the Bishop Peak Natural Reserve, and due to the high usage of the area, wheeled transportation is not allowed access to the area. Please respect this wish by exploring Bishop Peak Natural Reserve on foot, no matter how tempting it might be to ride a mountain bike. The trail is well marked and maintained.

## **Trail Description:**

**Patricia Drive Trailhead:** The trail starts along a dirt utility access road with a pedestrian gate. Bishop Peak towers above the trailhead, and open hills and oaks beckon the hiker. The trail then climbs 150 feet to the

**Bishop Peak Trail Sign.** The Bishop Peak Trail goes left up the hill. Our trail continues straight up the paved road to the

**water tank.** Skirt the fence on the right side of the water tank, where the Felsman Loop begins. The trail now swings left into an oak woodland, crosses a seasonal creek, and climbs to a knoll for a view of Bunnell Ranch. From the knoll, the trail descends across an open meadow, possibly boggy in winter. It then enters the forest again, crossing a small stream before reaching the

**pedestrian gate.** This is the junction with the Shady Grove Trail, which goes left. The Felsman Loop turns right to follow an old ranch road a short distance downhill. When the road makes a sharp right turn, follow our trail straight up the hill. After two short switchbacks, the trail crosses another old road before reaching the

**Falcon Ridge Trail Junction** The Felsman Loop continues across the road, entering another oak forest as it descends to a bridge over a small stream. Here the terrain changes into chaparral. West Cuesta Ridge spreads out to the east. Watch for the many spring flowers and the occasional pack rat nest along the trail. The trail reaches the farthest of the three

**ranch roads** on the Bishop Peak Reserve. Turn left and follow the ridge line. Be sure to take your time and enjoy the views of the valley, as well as the different perspective of Chumash and Bishop Peaks. The trail passes through a gate, then makes a short climb to reach the

**Falcon Ridge Trail.** Taking the right fork, continue along the road. Ignore the old cow path and continue left along the road. Watch for the

**Garden Rock** on the right, shaded by a huge oak tree. Ignore the junction with the Shady Grove Trail and continue straight along the road, then take the left fork to reach the

**Bishop Peak/Felsman Loop Junction** For a longer hike, turn right to ascend the summit of Bishop Peak itself at 1559 feet. The Felsman Loop passes through the pedestrian gate, follows the ridge, and switches back as we descend to the Clorissa and Pete boulders before reaching the maintenance road. Follow this road and turn left when you reach the

**Patricia Avenue Trail** sign. The trail continues down four switchbacks and rejoins the maintenance road. This is marked by the

**Bishop Peak Trail Sign.** Turn right and follow the road back to the  
**Patricia Drive Trailhead.**